

Doc. Tr.
Pr 32. 4824802
W22
W22
1942

WAR PRODUCTION BOARD

Washington, D. C.

No. 10

-00000-

DIRECTORY OF WAREHOUSE DISTRIBUTORS

of

"SCHEDULE A" STEEL PRODUCTS,

as defined in

Supplementary Order M-21-b

-00000-

UTAH STATE AGRICULTURAL COLLEGE LIBRARY

November, 1942

1917

1917

1917

1917

1917

1917

1917

1917

1917

1917

1917

WAR PRODUCTION BOARD

Washington, D. C.

DIRECTORY OF WAREHOUSE DISTRIBUTORS OF "SCHEDULE A" STEEL PRODUCTS

AS DEFINED IN SUPPLEMENTARY ORDER M-21-b

To facilitate the speedy procurement of miscellaneous small steel items by Government Agencies and companies working on important War contracts, the War Production Board has prepared a directory of Warehouse Steel Distributors who purchase directly from steel producers. The list includes only those companies which distribute steel products of carbon, stainless, or alloy grade from stock which are referred to in Supplementary Order M-21-b as "Schedule A" products. Generally speaking, such products include those which are most widely in demand for War work, the distribution of which is handled by a relatively small number of warehouses.

Distributors of "Schedule B" steel products are not included in this Directory. A number of the warehouses handling "Schedule A" products also distribute varying quantities of concrete reinforcing bars, pipe, wire products, tin and terne plate, and galvanized sheets and strip. However, since there are over 12,000 warehouses who purchase "Schedule B" products from steel producers, no attempt has been made here to include only a partial list.

Additional copies of this Directory of Warehouse Distributors may be obtained from the nearest field office of the War Production Board, or upon application to the Distribution Planning Unit, War Production Board, Room 1090 Railroad Retirement Building, Washington, D. C.

J. R. STUART

Head, Warehouse Unit

Iron and Steel Branch

CODES USED IN THE PREPARATION OF THIS DIRECTORY

I. APPROXIMATE INVENTORY OF "A" PRODUCTS

- 1 - Inventory 500 tons and over
- 2 - Inventory 100 tons and over but under 500 tons
- 3 - Inventory under 100 tons

II. PRODUCTS CARRIED IN STOCK (Code numbers refer to product classifications used in Supplementary Order M-21-b)

- 1 - Ingots, blooms, billets, slabs, tube rounds, sheet and tin bars
- 2 - Structural Shapes and piling
- 3 - Plates (Universal and Sheared)
- 4 - Rails - over 60 lbs.
- 5 - Rails - all other
- 6 - Tie plates and track accessories, including track spikes
- 7 - Hot rolled bars, carbon, including hoops and bands
- 9 - Hot rolled bars, alloy
- 10 - Cold finished bars, carbon and alloy
- 11b - Tubes (Mechanical and Pressure)
- 12 - Wire rods (For wire drawing only)
- 14 - Black plate
- 16 - Sheets and strip, hot rolled
- 17 - Sheets and strip, cold reduced
- 19 - Sheets and strip, all other (includes long ternes, but does not include galvanized sheets and strip)
- 20 - Tool steel bars, including drill rod
- 21 - Wheels and axles
- 22 - Forgings, armor plate, and ordnance
- 23 - Forgings, all other (rough forgings only)
- 24 - Steel castings (rough castings only)
- 25 - Skelp

III TYPES OF STEEL CARRIED IN STOCK

- C - Carbon grades only
- S - Stainless grades only
- A - Alloy grades only
- D - Carbon and alloy grades
- E - Carbon and stainless grades
- F - Stainless and alloy grades
- G - Carbon, stainless and alloy grades

INDEX TO DIRECTORY OF WAREHOUSE DISTRIBUTORS OF "SCHEDULE A" STEEL PRODUCTS

	<u>PAGE</u>
 <u>REGION I - ATLANTIC STATES</u>	
Connecticut.....	1
Delaware.....	1
District of Columbia.....	1
Maine.....	1
Maryland.....	2
Massachusetts.....	2
New Hampshire.....	3
New Jersey.....	4
New York (Eastern).....	5
Pennsylvania (Eastern).....	6
Rhode Island.....	8
Vermont.....	8
 <u>REGION II - GREAT LAKES STATES</u>	
Kentucky (Eastern).....	8
Michigan (Eastern).....	9
New York (Western).....	10
Ohio.....	11
Pennsylvania (Western).....	13
West Virginia.....	14
 <u>REGION III - CENTRAL STATES</u>	
Colorado.....	15
Illinois.....	16
Indiana.....	18
Iowa.....	19
Kansas.....	19
Kentucky (Western).....	20
Michigan (Western).....	20
Minnesota.....	20
Missouri.....	21
Montana.....	21
Nebraska.....	22
North Dakota.....	22
South Dakota.....	22
Wisconsin.....	22
Wyoming.....	23
 <u>REGION IV - SOUTHERN STATES</u>	
Alabama.....	23
Arkansas.....	24
Florida.....	24
Georgia.....	25
Louisiana.....	26
Mississippi.....	26
New Mexico.....	27
North Carolina.....	27
Oklahoma.....	27
South Carolina.....	28
Tennessee.....	28
Texas.....	29
Virginia.....	31
 <u>REGION V - PACIFIC STATES</u>	
Arizona.....	31
California.....	31
Idaho.....	33
Oregon.....	34
Utah.....	34
Washington.....	35

SECTION I - CHAPITRE PREMIER

Le premier chapitre de ce livre est consacré à l'étude de la situation géographique de la région étudiée. On y trouve une description détaillée des caractéristiques physiques et humaines de la zone, ainsi qu'une analyse des facteurs qui ont influencé son développement. Les données sont présentées sous forme de tableaux et de graphiques, permettant une visualisation claire des tendances et des variations.

SECTION II - CHAPITRE DEUXIEME

Le deuxième chapitre traite de l'évolution démographique de la région. Il examine les fluctuations de la population au fil du temps, les causes de ces variations et leur impact sur l'économie et la société. Des statistiques précises sont fournies pour appuyer les conclusions tirées de l'analyse.

SECTION III - CHAPITRE TROISIEME

Le troisième chapitre se concentre sur l'aspect économique de la région. Il explore les principales activités productives, les secteurs d'emploi et les indicateurs de développement économique. Une attention particulière est portée sur les défis rencontrés par la région et les stratégies proposées pour stimuler sa croissance.

SECTION IV - CHAPITRE QUATRIEME

Le quatrième chapitre aborde les aspects sociaux et culturels de la région. Il analyse les conditions de vie de la population, les traditions locales et les initiatives communautaires. Des recommandations sont formulées pour améliorer le bien-être social et préserver le patrimoine culturel.

SECTION V - CHAPITRE CINQUIEME

Le cinquième chapitre conclut l'étude en synthétisant les principales découvertes et en proposant des perspectives futures. Il souligne l'importance de la recherche continue pour mieux comprendre la région et répondre aux besoins de sa population.

[illegible]

WAREHOUSE DISTRIBUTORS OF "SCHEDULE A" STEEL PRODUCTS

NAME AND LOCATION OF WAREHOUSE	APPROXIMATE INVENTORY OF "A" PRODUCTS	PRODUCTS CARRIED IN STOCK																								
		1	2	3	4	5	6	7	8	9	10	11a	12	14	16	17	19	20	21	22	23	24	25			
<u>ATLANTIC STATES (CONT.)</u>																										
<u>MASSACHUSETTS (CONT.)</u>																										
<u>Fitchburg</u>																										
Columbia Trading Company.....	28 Highland Avenue.....	3									C															
Fitchburg Hardware Company.....	50 Laurel Street.....	3								C		C														
Union Foundry Company.....	162 Water Street.....	2											0													
<u>Holyoke</u>																										
J. Russell and Company, Inc.....	361 Dwight Street.....	3								C		C														
<u>Lawrence</u>																										
Treat Hardware Corporation.....	582 Essex Street.....	3								C		C														
<u>Lowell</u>																										
Lowell Iron and Steel Company....	50 Tanner Street.....	1			C	C				C		0	C		C			C								
<u>Lynn</u>																										
Bay State Steel Company.....	821 Boston Street.....	3													C		C	C								
<u>New Bedford</u>																										
Jonathan Handy Company, Inc.....	28 William Street.....	3			C					C		C														
New Bedford Steel & Supply Co.	18 Commercial Street..	3								C		C														
<u>Pittsfield</u>																										
Pittsfield Iron Works & Coal Supply	458 South Street.....	3			C	C				C							C									
<u>Readville</u>																										
Compressed Steel Shafting Co.....		2										C														
Heathcote & Wilson Steel Co.....	1589 Hyde Park Avenue...	3															C	C		0						
<u>Somerville</u>																										
L. E. Zurbach Steel Company.....	Middlesex Avenue.....	1														C		C	C	C						
<u>South Boston</u>																										
Edgar T. Ward's Sons Company.....	60 Old Colony Avenue....	2																	D							
<u>Springfield</u>																										
Allegheny-Ludlum Steel Corp.....		2										S								A			A			
Crucible Steel Company of America.....		2									A								D				A			
Charles C. Lewis Company.....	58 Liberty Street.....	1			C	C				C		C					C		C				C			
Steel Service Company.....	77 Page Boulevard.....	2			C					C		C														
Vanadium-Alloys Steel Company.....		3																	D							
<u>Worcester</u>																										
D. H. Adams and Company.....	75-79 Summer Street....	3													C											
Reliance Steel Corporation -																										
Bancroft Division.....	62 Lincoln Street.....	1				C											C		C	C	C					
George F. Blake, Inc.....	198 Mechanic Street.....	1			C	C				C	A	D					C	C			C			C		
Braeburn Alloy Steel Corporation.....		3																			A					
Merrill and Usher Company.....	5-7 Arctic Street.....	1			C	C				C	A	C					C				C			C		
Pratt and Inman.....	12 Cherry Street.....	1			C					C	A	C					C				D			C		
T. J. Rafferty and Company, Inc.....		1															C	C								
Universal-Cyclops Steel Corp.....	35 Harmon Street.....	3																		D						
<u>NEW HAMPSHIRE</u>																										
<u>Concord</u>																										
Thompson and Hoague Company.....	42 North Main Street....	3			C					C																
<u>Manchester</u>																										
John B. Varick Company.....		3			C					C		C														

NAME AND LOCATION OF WAREHOUSE	APPROXIMATE INVENTORY OF "A" PRODUCTS	PRODUCTS CARRIED IN STOCK																							
		1	2	3	4	5	6	7	8	9	10	11a	12	14	16	17	19	20	21	22	23	24	25		
ATLANTIC STATES (CONT.)																									
NEW JERSEY																									
Camden																									
New Jersey Steel Company..... Ferry & Lansdowne Ave...	1			C	C			C		C					C			C							
Elizabeth																									
Schnitzer Alloy Products Company. 164 Broadway.....	3									S	S					S									
Hillside																									
Edgcomb Steel Corporation..... 460 Hillside Avenue.....	1							C	F	G	S				C	E	C	C					C		
Jersey City																									
Court, Ernst and Wesson, Inc..... 131-141 Pacific Avenue..	1			C	C			C	A	C					C			C							
Joseph T. Ryerson & Son, Inc.....	1			C	C		C	C	C	A	G	E			D	E	D	D							
York Corrugating Company..... 66 Hudson Street.....	3							C							O										
Linden																									
Alloy Steel Products Co., Inc.... 1300 W. Elizabeth Ave...	3										S														
Lyndhurst																									
Reliance Steel Corporation..... Newark & Page Avenues...	1													C	C	C	C								
Newark																									
Allegheny Ludlum Steel Corp.....	3			S														A							
Benedict-Miller, Inc..... 216 Clifford Street.....	1			C	C			C	A	D								D							
James A. Goe and Company..... 401 Washington Street...	1			C	C			C	C	C					C			D							
Crucible Steel Company of America 620 Market Street.....	2							C	A	A								D							
Fairoute Iron & Steel Company... 182 Frelinghuysen Ave...	1			C	C			C	A	C	C	C			C	C		C							
General-Metal Mfg. Company..... 203 Johnson Avenue.....	3							C																	
Grammar, Dempsey & Hudson, Inc... 212 Rome Street.....	1			C	C			C	A	C					C										
Hoyleland Steel Company, Inc..... 212 Rome Street.....	2																								
International Corporation..... 184 Clifford Street.....	3			S						S								D							
Miller Steel Company, Inc..... 49 Empire Street.....	2									D								C							
S.K.F. Steels, Inc..... 110 Frelinghuysen Ave...	1			A						A	A	A													
Scully Steel Products Company... Bessemer Street.....	1			C	C	C	C	C	F	G	E				C	E		C							
Structural Iron & Steel Corp.... 65-81 Polk Street.....	2			C	C			C																	
Edgar T. Ward's Sons Company..... 400 Frelinghuysen Ave...	1									E	C				C	C		C							
Wheelock, Lovejoy & Co., Inc.... 332 Frelinghuysen Ave...	1			A				C	A	A															
New Brunswick																									
Morrison Steel Company..... Remsen Ave. & Sandford St	1			C	C			C		C					C			C							
North Bergen																									
John B. Astell and Co., Inc.....	1										E														
Denman and Davis.....	1			C	C	C		C		C					C	C		C							
Passaic																									
New Jersey Engineering and Supply Company..... 577 Main Avenue.....	2			C				C		C			C				O								
Perth Amboy																									
Abarry Iron and Steel Company.... 1000 State Street.....	1			C	C	C	C	C		C					C			C							
Phillipsburg																									
Mickel Brothers..... 175 Broad Street.....	2			C				C																	
Rockaway																									
Sandvik Steel of New Jersey.....	3																	C							
Trenton																									
Barbour Brothers Steel Co., Inc.. Marion St. & Reading R.R.	1			C	C	C		C		C					C	C		C					C		
Frank Millner Company..... 102 North Olden Avenue..	2			C	C			C							C										
Union																									
Mapes and Sprowl Steel Company.....	1			C	C			C		C					C	C	C								

WAREHOUSE DISTRIBUTORS OF "SCHEDULE A" STEEL PRODUCTS

NAME AND LOCATION OF WAREHOUSE	APPROXIMATE INVENTORY OF "A" PRODUCTS	PRODUCTS CARRIED IN STOCK																								
		1	2	3	4	5	6	7	9	10	11b	12	14	16	17	19	20	21	22	23	24	25				
ATLANTIC STATES (CONT.)																										
NEW YORK (EASTERN)																										
Albany																										
Albany Hi-Grade Steel Corporation 1032 Broadway.....	3							C		C										C						
Albany Steel & Iron Supply Co., Inc. Troy Road.....	2				C	C		C		C										C						
Clausen Iron Company, Inc..... 36 Tivoli Street.....	2				C	C		C		C										C						
The Woodward Company..... Tivoli Street.....	2				C	C		C		C										C						
Bronx																										
Central Structural Steel Co., Inc. 176 St. & Harlem River..	1				C	C		C																		
Brooklyn																										
Amboy Steel & Pipe Corporation... 1722-30 Linden Blvd....	2				C	C		C																		
Atlas Supply Company, Inc..... 1380 Metropolitan Ave....	2																			C	C	C				
Barney Brainum, Inc..... 342 Flushing Avenue.....	2							C												C	C					
Harry Brainum, Jr., Inc..... 360 Oakland Street.....	2							C												C						
Broadway Iron & Pipe Corporation. 211 Kent Avenue.....	3				C																					
Brooklyn Bridle Iron and Anchor Works, Inc..... 194 Hinsdale Street.....	3							C																		
Brooklyn Steel Company, Inc..... 115 Banker Street.....	2																			C	C					
Bushwick Iron & Steel Co., Inc.. 110-116 Green Street....	1				C	C		C												C						
Carroll-McCreary Company, Inc.... 46-81 Metropolitan Ave..	1				C	C		C												C	C	C				
Concord Steel Corporation..... 326 Butler Street.....	1				C	C		C												C						
Dodwell and Company..... 466 Carroll Street.....	1				C	C		C												C						
Eastern Bridle Iron & Steel Corp. 185 Hinsdale Street....	2				C	C		C																		
Gardiner Steel Company, Inc..... 310 Freeman Street.....	2							C												C						
General Tin Plate Company..... 3611 14th Avenue.....	1																			C	C	C	C			
E. D. Giberson and Company, Inc.. Bush Terminal.....	1										C															
Greenburg Bros. Iron and Steel Corporation..... 114 North 4th Street....	1																			C	C					
Hamsley Incorporated..... 228 40th Street.....	2					C		C		C										C	C	C				
Kasper & Koetzle, Inc..... 563-567 Bushwick Avenue.....	2				C	C		C	C	C										C	C	C				
K. and S. Metal Supply, Inc..... 1184 Flushing Avenue....	1																			C	E	C	C			
Thomas W. Kiley and Co., Inc..... 57 Grand Street.....	1				C	C		C		C										C						
Lott Iron and Steel Company..... 801 Stone Avenue.....	3							C		C																
Morgan Steel Corporation..... 430 Morgan Avenue.....	1				C	C		C																		
A. B. Murray Company, Inc..... 147 Wolcott Street.....	1				C	C		C			C									C						
Ross Galvanizing Works, Inc..... 395 Kent Avenue.....	2				C	C		C												C						
Rushmore Steel Corporation..... 113 13th Street.....	1				C	C		C												C						
Schwarz and Cohn, Inc..... 680 Flushing Avenue.....	2					C														C	C	C				
David Smith Steel Co., Inc..... 234 46th Street.....	1				C	C		C		C										C						
Swedish American Steel Corp..... 429 Kent Avenue.....	2							C	A																	
Thypin Steel Company..... 444 Graham Avenue.....	1				C	C		C												C						
C. H. Tiebout and Sons, Inc..... 31 Grand Street.....	3																			C						
Tubular Service Corporation..... 120 44th Street.....	1										C															
Barnet Weinstein and Sons, Inc.. 126-44 Stewart Avenue..	1				C	C		C												C						
Winter, Wolff and Company..... 20 Anthony Street.....	1				C	C		C												C						
Glendale, Long Island																										
Glendale Steel Corporation..... 19 Clara Place.....	1																			C	C	C				
Mohican Steel Company, Inc..... 74-12 88th Street.....	1									C										C	C	C				
Glen Falls																										
J. E. Sawyer and Company, Inc.... 44-50 Glen Street.....	2				C	C		C		C										C						
Long Island City																										
D. Alper Company, Inc..... 39-25 21st Street.....	2				C	C		C																		
American Commercial Steel Co.... 36-33 21st Street.....	1				C	C		C												C						
American Petrometal Corporation.. 1102 Broadway Street....	1				C	C		C		C										C						
Bayonne Steel Company..... 48-34 Van Dam Street.....	2							C	S											C	S					
Egleston Brothers & Co., Inc..... Borden Ave. at 31st St..	1				C	C		C		C										C	C					
Jade Heating Material Supplies, Inc. 4338 33rd Street....	3							C												C						
Jones & Laughlin Steel Service, Inc. 30-44 Reville Avenue..	1				C	C		C	A	C										C						
Milcor Steel Company..... 35-26 21st Street.....	3							C																		
Montauk Iron & Steel Corporation. 25-20 Borden Avenue....	1				C	C		C												C						
Selkowitz Company..... 35-26 21st Street.....	3				C	C		C																		
Tube Distributors, Inc..... 4315 11th Street.....	1										C															
Maspeth, Long Island																										
Standard Tube Sales Corporation.. 1 Admiral Avenue.....	2										C															
Mt. Vernon																										
G. A. Feld Company, Inc..... 2 Wilson Place.....	3																			C						

WAREHOUSE DISTRIBUTORS OF "SCHEDULE A" STEEL PRODUCTS

NAME AND LOCATION OF WAREHOUSE	APPROXIMATE INVENTORY OF "A" PRODUCTS	PRODUCTS CARRIED IN STOCK																								
		1	2	3	4	5	6	7	8	9	10	11a	12	13	14	15	16	17	18	19	20	21	22	23	24	25
ATLANTIC STATES (CONT.)																										
NEW YORK (EASTERN) (CONT.)																										
Newburgh																										
Smith-Stewart Company..... 223 Broadway.....	2		C	C			C										C									
New York																										
Abeel Brothers, Inc..... 190 South Street.....	2		C	C			C										C									
Ackerlind Steel Company, Inc.... 392 West Broadway.....	2																				D					
Amalgamated Iron & Steel Corp.... 1191 Randell Avenue.....	2		C	C			C																			
Anglo-Saxon Supply Company, Inc.. 290 Pearl Street.....	3																				C					
Atlantic Steel Company..... 16 Bethune Street.....	3							A													A					
H. H. Bell Steel Company, Inc.... 727 Washington Street...	2						C	A													A					
Julius Blum and Company, Inc.... 532 West 22nd Street....	2		C				C		C	C																
H. Boker and Company, Inc..... 101 Duane Street.....	3																				D					
Bright Steel Corporation..... 528-532 West 22nd Street	1									C	C							C	C	C						
Bruce and Cook, Inc..... 373 Pearl Street.....	2						C										C	C	C							
Cohen and Sons Steel Company.... 3482 Park Avenue.....	1		C	C			C										C									
Crucible Steel Company of America 537 Broome Street.....	2		A				C	A	S											A	D				A	
Elbert Steel Corporation..... 259 West Street.....	3																				D					
Equitable Steel Company..... 187 Mercer Street.....	3																	C	C		C					
Expanded Metal Engineering Co.... 525 West 33rd Street....	3						C																			
Famex Industries, Inc..... 381 4th Avenue.....	3																				C					
Famex Steel Company..... 381 4th Avenue.....	3																				D					
G. A. Feld Company, Inc..... 162-168 E. 129th Street.	3																C									
G. A. Feld Company, Inc..... 351 West 41st Street....	3																C	S								
Firth-Sterling Steel Company.....	3																				D					
Fisher Brothers Steel Corporation 297 Morris Avenue.....	1		C	C			C										C									
Peter A. Frasse and Company, Inc.. 17 Grand Street.....	1							F	G	G								G			D					
Hoyland Steel Company, Inc..... 405 Lexington Avenue....	1		C														C	C			D					
William Jessop & Sons, Inc..... 627 Sixth Street.....	2																A				D					
The Kennedy, Foster Co., Inc.... 395 Pearl Street.....	3						C																			
Krystie Tinsmith & Roofing Supply Company..... 12 East First Street....	3																C									
Lehigh Steel Company..... 16 Bethune Street.....	2							A													D					
William H. Leonori & Co., Inc.... 30 Howard Street.....	2									C											C					
Lewisohn Sales Company..... 536 West 23rd Street....	2						C												C	C						
Manhattan Brass & Copper Co., Inc. 150-156 Lafayette Street	2																		C							
Metal Purchasing Company..... 501-551 West 30th Street	1																									
A. Miller Iron & Steel Corp..... 57 Mangin Street.....	3						C																			
A. Milne and Company..... 745 Washington Street...	1		D							C											D					
Patriarche and Bell, Inc..... 57 Carmine Street.....	3						C										C	C		C						
A. R. Purdy Company, Inc..... 790 Greenwich Street....	1						C	A	C	C							C	C		C					C	
William M. Rebuth Co., Inc..... 145 Hudson Street.....	2		C	C			C	A	D								C	C	C	C						C
Benjamin Rosen..... 229 East 55th Street....	3																C									
Sandvik Steel, Inc..... 111 Eighth Street.....	2																			D		D				
Schrock and Squires Steel Corp... 326 West 11th Street....	2			C			C	A	C								C	C	C		D					
Service Steel Corporation..... 825 East 140th Street....	2		C				C																			
Shanker Steel Ceiling Company... 517 West 28th Street....	3																C									
Standard Tinsmith & Roofer Supply Company..... 183 Chrystie Street....	3						C										C									
Uddeholm Company of America, Inc. 392 Broadway.....	2																				D					
Vought and Williams, Inc..... 211-225 W. 61st Street..	1		C	C			C		C								C									
West Side Metal and Roofing Supply Company..... 316 West 60th Street....	1						C										C	C								
Troy																										
Hannibal Green's Son & Co., Inc.. 10-14 Monroe Street....	2		C	C			C		C												C					
Valley Stream																										
Railroad and Landscape Supply Co. Sunrise Highway & L.I.R.R.	2				C	C	C																			
Watervliet																										
Allegheny Ludlum Steel Corporation.....	2							F	S											A						
Woodside, Long Island																										
J. K. Larkin and Company, Inc.... 50-25 72nd Street.....	1		C	C			C		C								C									
PENNSYLVANIA (EASTERN)																										
Allentown																										
William H. Taylor & Company, Inc. 250-256 Hamilton St....	3						C	C	C																	
M. S. Young & Company.....	2						C										C				C					

WAREHOUSE DISTRIBUTORS OF "SCHEDULE A" STEEL PRODUCTS

NAME AND LOCATION OF WAREHOUSE	APPROXIMATE INVENTORY OF "A" PRODUCTS	PRODUCTS CARRIED IN STOCK																								
		1	2	3	4	5	6	7	9	10	11b	12	14	16	17	19	20	21	22	23	24	25				
ATLANTIC STATES (CONT.)																										
PENNSYLVANIA (EASTERN) (CONT.)																										
Chester																										
Henry Lewis and Company..... Second & Irving Sts.....	3					C	C																			
Easton																										
Losey and Company, Inc.....	3			C				C																		
Emigsville																										
Atlas Manufacturing Corporation.....	3			C	C			C																		
Harrisburg																										
Appleby Brothers & Whittaker Co.. 216 South Second St.....	2							C	A		C	C														
York Corrugating Company.....	3															C										
Hasleton																										
Jere Woodring and Company.....	2					C	C			C						C			C							
Honesdale																										
David Fisher and Sons.....	3			C		C		C		A			C			C										
Lancaster																										
Steinman Hardware Company..... 26 West King Street.....	3							C											C							
Lattimer Mines, Luzerne County																										
Lattimer Supply and Machinery Co.....	2							C	C							C			C							
Philadelphia																										
American Fabricated Steel Co..... 2442 West Bodine Street.	1			C	C			C																		
Athos Steel Service, Inc..... 23rd and Allegheny Ave..	2							C								C										
Charles Bond Company..... 617 Arch Street.....	3									C																
Calcos Steel and Iron Company.... 1330 N. 30th Street.....	1			C	C			C		C						C	C									
Chrome Iron and Steel Company.... 1710 North Delaware Ave.	2									C						C										
Concord Steel Corporation..... Casper & Ontario Sts....	1			C	C			C								C										
Consolidated Steel Warehouse Co.. 2245 E. Tioga Street....	1			C	C			C		C						C										
The Creamery Package Manufacturing Company..... 2923 Broad Street.....	3												S													
Crucible Steel Company of America 1224 Callowhill Street..	2							C	A	A									D							
Edgcomb Steel Company..... "D" Street & Erie Avenue	1								A	E	S					C	E	C	C					C		
Fable and Company, Inc..... 510-12 N. 3rd Street....	2															C										
Firth-Sterling Steel Company.....	3																		D							
Peter A. Fresse and Company, Inc. 3921 Wissahickon Avenue.	1								A	G	G					A	E		D							
R. B. Fritch and Company..... 3rd St. & Sedgley Ave...	1			C	C			C		C						C										
Hall and Carpenter..... 518-520 Race Street....	3															C										
L. Norris Hall, Inc..... 3520 Indian Queen Lane..	1			C	C			C		C						C	C		C							
Hill-Chase and Company..... Trenton Ave. & Ontario St	1								E	C						C	E	C	D							
Miller Steel Sales..... Front and Palmer Streets	1			C	C			C		C						C	C		C							
Morris Wheeler and Co., Inc..... Fox St. & Roberts Ave...	1			C	C	C	C	C		C						C	C		C							
Henry B. Pancoast Company..... 950 North Front Street..	2															C										
Horace T. Potts Company..... E. Erie Ave. & "D" St...	1			C	C	E		C	F	G	E					C	E		D					D		
W. F. Potts Son & Co., Inc..... 1224 Cherry Street.....	2							C								C										
C. J. Rainear and Company, Inc... 210 North 21st Street...	2															C										
Republic Steel Corporation -																										
Berger Manufacturing Division.. 16th St. & Washington Ave	3															C										
Joseph T. Ryerson & Son, Inc.... 5200 Grays Avenue.....	1			C	D			C	A	D	C					D	C	D	D							
Steel Distributors, Inc..... Salmon and Tioga Sts....	1								C		C					C	C	C	C							
Taylor Steel & Wire Company..... "D" St. above Erie Ave..	3															A										
Tubular Service Corporation..... 721 Sedgley Avenue.....	3															C										
Edgar T. Ward's Sons Company.... Cedar & Westmoreland Sts.	1								E	C						C	C		C							
Pottstown																										
Mayer Pollock Company..... South Keim Street.....	3			C																						
Pottsville																										
Pottsville Supply Company..... 12 Logan Street.....	3							C	C	C						C			C							

WAREHOUSE DISTRIBUTORS OF "SCHEDULE A" STEEL PRODUCTS

NAME AND LOCATION OF WAREHOUSE	APPROXIMATE INVENTORY OF "A" PRODUCTS	PRODUCTS CARRIED IN STOCK																								
		1	2	3	4	5	6	7	9	10	11b	12	14	16	17	19	20	21	22	23	24	25				
ATLANTIC STATES (CONT.)																										
PENNSYLVANIA (EASTERN) (CONT.)																										
Reading																										
Bard Hardware Company.....	800 Penn Street.....	3						C		C		C		C					C							
Scranton																										
The Bittenbender Company.....	126 Franklin Avenue....	3		C				C	C	C				C					C							
The Scranton Supply & Machinery Company, Inc.....		3						C		C				C					C							
The Supply & Engineering Company.	811 West Lackawanna Ave.	3						C	C					C					C							
Shamokin																										
Sheet Metal Products Company.....	314-320 S. Fifth St....	3												C	C											
Wilkes-Barre																										
Eastern Pennsylvania Supply Co...	56-62 S. Pennsylvania Ave.	3						C	C	C				C												
York																										
F. A. & S. Small Company, Inc....	George and North Streets.	2						C		C				C		C	C									
York Corrugating Company.....		3												C												
York Pipe and Steel, Inc.....	Warren Street.....	3		C	C			C																		
RHODE ISLAND																										
Providence																										
The Congdon and Carpenter Co....	405 Promenade Street....	1		C	C			C		C				C	C		C									
Crucible Steel Company of America	116 Clifford Street.....	2						C	A	C							A	A								
Nightingale, Baker & Salisbury...	180 West Exchange St....	1						C		C																
VERMONT																										
Barre																										
Reynolds and Son, Inc.....		3							A										C							
Trow and Holden Company.....	45-57 S. Main Street....	3						C											C							
Burlington																										
The Blodgett Supply Co., Inc.....		2						C						C		C										
Strong Hardware Company.....	205-207 Main Street....	3						C																		
GREAT LAKES STATES																										
KENTUCKY (EASTERN)																										
Ashland																										
Ben Williamson & Company, Inc....	1539 Greenup Avenue....	2						C	C	C									C				C	C		
Harlan																										
Kentucky Mine Supply Company, Inc.....		2						C	C					C												
McComb Supply Company, Inc.....		2						C	C	C	C			C												
Louisville																										
Century Steel Corporation.....	1300 S. 12th Street....	1												C	C	C										
Dehler Brothers Company, Inc.....	116 E. Market & 111 W. Main Street.....	3						C	C						C											
Louisville Bridge & Iron Co., Inc.	11th and Oak Streets....	2		C	C				C					C												
Neill La Vieille Supply Company..	505 West Main Street....	2		C	C				C		C			C			C									
William Stockhoff and Son.....	426 East Market St....	3							C																	
Todd-Donigan Iron Company.....	811 West Main Street....	1		C	C			C	C		C			C	C				C							
Middlesboro																										
J. R. Hoe and Sons, Inc.....		3		C	C				C						C											
Reams Hardware Company, Inc.....	2023 Cumberland Avenue..	2						C	C					C					C							

WAREHOUSE DISTRIBUTORS OF "SCHEDULE A" STEEL PRODUCTS

		APPROXIMATE INVENTORY OF "A" PRODUCTS	PRODUCTS CARRIED IN STOCK																								
NAME AND LOCATION OF WAREHOUSE			1	2	3	4	5	6	7	8	9	10	11b	12	14	16	17	19	20	21	22	23	24	25			
GREAT LAKES STATES (CONT.)																											
MICHIGAN (EASTERN)																											
Battle Creek																											
Adolph Johnson Company.....	Short Street.....	2			C	C			C								C										
Bay City																											
Jennison Hardware Company.....	901 Water Street.....	1			C	C			C	C		C					C			C							
Center Line																											
The Stanton Steel Company.....	24647 Sherwood Road.....	1															C	C									
Detroit																											
Allegheny Ludlum Steel Corp.....		2		A							A	A								A			A				
Braeburn Alloy Steel Corp.....	6560 E. McNichols Road..	2																		A							
Brown Steel Corporation.....	8835 Central.....	3															C										
Buhl Sons Company.....	Foot of Adair Street....	2									C		C				C										
The Carpenter Steel Company.....	6181 Warren Avenue, West	2									A	S								D							
Central Steel & Wire Company.....	5035 Bellevue Avenue....	1			C	C			C	A	D		C				C	E									
Columbia Tool Steel Company.....	718 Howard Street.....	3																		D							
Copco Steel & Engineering Co.....	14035 Grand River Avenue	1			C	C			C								C	C									
Craine-Schrage Steel Company.....	8701 Epworth Blvd.....	1		D		C			C	A	D						C			D							
Crucible Steel Company of America	3245 Hubbard Avenue.....	1									A	A							A	D			A				
Davis, Kraus and Miller, Inc.....	442 East Jefferson.....	2							C																		
Duncan Steel Company.....	6560 Mack Avenue.....	1							C		D									C							
Bernard Epps and Company.....	6450 E. McNichols Road..	1				C			C								C	C	C								
Federal Pipe and Tube Company...	6464 E. McNichols Road..	2			C	C			C				C														
Firth-Sterling Steel Company.....		2									A									D							
Fort Pitt Steel Corporation.....	729 W. Grand Blvd.....	1															C										
Greer Steel Company.....	17385 Ryan Road.....	1																C									
Guardian Steel Company.....		1			C	C											C										
Huron Steel Company, Inc.....	1113 West Philadelphia..	1										C								C							
Jessop Steel Company.....		2																		D							
Jones & Laughlin Steel Corp.....	3289 Beaufait Street....	1			C	C		C		C	A	C	C	C			D			D							
Kasle Steel Corporation.....	6782 Goldsmith.....	1			C	C	C	C	C			C					C	C		C		C					
Latrobe Electric Steel Company...	1839 E. Grand Blvd.....	2			C							A								D			D				
Lion Steel Company.....	7490 Intervale Avenue....	1															C	C									
National Sheet Steel Company.....	13000 Lyndon Avenue....	1															C	C									
The Newburgh Steel Company.....	2995 Hubbard St.....	1															C	C									
The J. M. & L. A. Osborn Co.....	690 Amsterdam Avenue...	2							C								C	C	D								
Pearless Steel Products Co.....	4201 Cabot Avenue.....	1																	C								
Peninsular Steel Company.....	1040 McDougall Avenue...	1				C					C	A	C							A							
Production Steel Company.....	4000 Beaufait Avenue...	1															C	C									
Reliance Steel Corporation.....	13770 Joy Road.....	1				C											C	C	C								
C. A. Roberts Company.....	2460 Bellevue Avenue....	1												C													
Joseph T. Ryerson & Son, Inc.....	1600 E. Euclid Avenue...	1			C	C	C	C	C		C	A	D	C			C	C	C	D							
Schroeder Steel Sales Company...	3938 Chene Street.....	1															C										
Service Iron Works.....	12271 Coyle.....	2				C																					
Service Steel Company.....	1435 Franklin Street....	1													D												
Standard Steel Products Company..	12285 Schaefer Highway..	1			C	C			C		C						C	C									
The Star Steel Supply Company...	7522 Oakland Avenue....	3												C			C										
Steel Plate & Shape Corporation..	15050 Woodward Avenue...	1			C	C			C								C										
The Steel Products Company.....	14001 Intervale Avenue...	1				C											C	C									
Steel Sales Corporation.....	5151 Wesson Avenue.....	2							C		C	C					C	C		C							
Union Drawn Steel Division -																											
Republic Steel Corporation.....	237 Joe Campau Avenue...	1									G									C							
United Steel Sales.....	2300 West Jefferson Ave.	1															C										
Universal-Cyclops Steel Corp.....	5187 Loraine Avenue.....	2																		D							
Vanadium-Alloys Steel Company...		2																		D							
Voisine Steel Company.....	2423 N. McKinstry.....	1															C	C									
Vulcan Crucible Steel Company...	4843 Bellevue Avenue....	3																									
Edgar T. Ward's Sons Company.....	1300 West Fort Street...	1							C	A	G	C					C	C		C							
Wheelock, Lovejoy & Co., Inc.....	3201 Bellevue Avenue....	2		A							A																
M. H. Wilkins Company.....	20501 Hoover.....	3				C																					
Wayne W. Wilson Company.....	2154 East Woodbridge...	2										C															
Woodmere Scrap Iron & Metal Co...	9101 West Fort Street...	2				C																					
Flint																											
Flint Structural Steel Company...	Davidson Road.....	1			C	C			C								C										
Gransden-Hall and Company.....	Walnut and Poplar.....	1									A	D					C		C	C							
Highland Park																											
Todd Steel Corporation.....	15843 Second Blvd.....	1															C	C									

NAME AND LOCATION OF WAREHOUSE	APPROXIMATE INVENTORY OF "A" PRODUCTS	PRODUCTS CARRIED IN STOCK																								
		1	2	3	4	5	6	7	8	9	10	11b	12	14	16	17	19	20	21	22	23	24	25			
GREAT LAKES STATES (CONT.)																										
MICHIGAN (EASTERN) (CONT.)																										
Jackson																										
Smith Winchester Company..... 140 S. Mechanic St.....	2			C	C			C		C		C			C				C							
Lansing																										
Jarvis Engineering Works.....	2			C	C			C							C											
Mill Supplies Corporation..... 316 E. Michigan Avenue..	3																		C							
Port Huron																										
F. Yeager Warehouse.....	3			C	C			C							C											
Saginaw																										
Morley Brothers..... 115 N. Washington Ave...	2							C		C					C				C							
Reichle Supply Company..... 1215 S. Jefferson Ave...	3																		C							
Saginaw Hardware Company..... 200 S. Hamilton Street..	2			C				C	C	C					C		C									
NEW YORK (WESTERN)																										
Binghamton																										
Babcock Hinds and Underwood, Inc. 125 State Street.....	2			C				C		C									C							
L. J. Kingsley Company..... 1 North Depot Street....	3							C																		
Buffalo																										
Allegheny Ludlum Steel Corp.....	3																									
Beals, McCarthy and Rogers, Inc.. 50 Terrace.....	1			C	D			C	C	C	A	C	C			C	E				A					
Crucible Steel Company of America 69 Carroll Street.....	2									C	A	A						C			D					
Enos and Sanderson..... 147 Bushnell Avenue.....	1			C	C					C		C				C										
Ernst Iron Works, Inc..... 75 Lathrop Street.....	1			C	C					C						C										
Peter A. Frasse & Co., Inc..... 50 Exchange Street.....	1									A	G	G						E			A					
The J. M. & L. A. Osborn Co..... 64 Rapin Street.....	3																	C	C							
Joseph T. Ryerson & Son, Inc..... 40 Stanley Street.....	1			C	E			C	C	C	A	G	C					C	E	C	A					
Seneca Steel Service, Inc..... 1050 Military Road.....	1				C													C	C	C						
Service Steel Company..... 19 Scott Street.....	2											C	C													
Edgar T. Ward's Sons Company.... 39 River Street.....	1							C		C		C						E			C					
Weed and Company..... 95 Swan Street.....	2							C		C								C								
Wheelock, Lovejoy and Company... 288 Court Street.....	2			A						C	A	D														
Corning																										
Standard Manufacturing Company of Corning New York, Inc.....	3			C	C													C								
Dunkirk																										
Allegheny Ludlum Steel Corp.....	2																				A					
Elmira																										
Irving D. Booth, Inc..... 620 William Street.....	2			C	C			C		C						C										
Jamestown																										
Clarke Hardware Company..... 13 East 3rd Street.....	3							C		C								C	C							
Niagara Falls																										
Dobbie Foundry & Machine Company.....	2			C	C			C		C						C	C									
Rochester																										
Allegheny Ludlum Steel Corp.....	3										S									A						
Brace-Mueller-Huntley, Inc..... 315 Hollenbeck St.....	1			C	C			C		E	C					C	E									
Burke Steel Company, Inc..... 30 Sherer Street.....	1			C				C		C										D						
Cook Iron Store Company.....	2							C																		
Follansbee Steel Corporation.....	2																	C	C	C						
Rochester Iron & Metal Company... 325 St. Paul Street....	3			C																						
The Sidney B. Roby Company..... 208-214 South Avenue....	2							C		C	C	C								C						

494076 O - 42 - 3

WAREHOUSE DISTRIBUTORS OF "SCHEDULE A" STEEL PRODUCTS

		APPROXIMATE INVENTORY OF "A" PRODUCTS	PRODUCTS CARRIED IN STOCK																							
NAME AND LOCATION OF WAREHOUSE			1	2	3	4	5	6	7	9	10	11b	12	14	16	17	19	20	21	22	23	24	25			
GREAT LAKES STATES (CONT.)																										
OHIO (CONT.)																										
Cleveland (Cont.)																										
The W. Bingham Company.....	1278 West 9th Street....	1						C	C		C				C			C								
The Bissett Steel Company.....	945 East 67th Street....	1	C						A	D								C								
Braeburn Alloy Steel Corporation.	1373 East 18th Street....	3																A								
Builders Structural Steel Co.....	2880-2914 E. 34th Street	1		C	C				C		C		C	C	C	C										
The Carpenter Steel Company.....	1515 Hamilton Avenue....	2							F	S								D								
The Cleveland Tool & Supply Co..	1427-1437 W. 6th Street..	2								C	E							C								
Columbia Tool Steel Company.....	1231 West 9th Street....	3																D								
Crucible Steel Company of America	1258 East 55th Street....	2							A	D							A	D			A					
Darwin and Milner, Inc.....	1260 West 4th Street....	2	A															D				A				
The Decker-Reichert Steel Co.....	4500 Train Avenue.....	2							C						C	C		D								
Firth-Sterling Steel Company.....		3																								
Franklin Steel Blanking Corp.....	896 East 70th Street....	2													C	C										
Franklin Steel Company.....	896 East 70th Street....	3											O													
Hamilton Steel Company.....	E. 131st St. & Taft Ave.	1									D	D					D	C								
Hoyland Steel Company.....	E. 131st St. & Taft Ave.	3																D								
Jessop Steel Company.....		3													D			D								
The Lake Erie Steel & Blanking Co.	221 East 131st Street....	1													C	C	C									
Latrobe Electric Steel Company...	5140 Superior Avenue....	3																A			C					
Mau-Sherwood Supply Company.....	800 Lime Road.....	3										C						C								
Nottingham Steel Company.....	935 East 63rd Street....	1													C	O	C									
Ohio Builders Specialty Company..	6702 Park Avenue.....	3		C																						
The Ohio Steel and Supply Company	5100-20 Sweeney Avenue..	1													C	O										
The J. M. & L. A. Osborn Company.	1541 East 38th Street....	2							C						C		C									
Paterson-Leitch Company.....	900 East 69th Street....	1		C	C		C		C						C											
Peninsular Steel Company.....	2222 Lakeside Avenue....	1									O							A								
The Regent Steel Company - Warehouse No. 1.....	3361 East 80th Street... 1	1													C	C	C									
The Regent Steel Company - Warehouse No. 2.....	1191 East 40th Street... 1	1			C										C	C	C									
Reliance Steel Corporation.....	1170 Ivanhoe Road..... 1	1			C										C	C										
Republic Steel Corporation.....	1970 Carter Road..... 2	2							C	A								D								
Republic Structural Iron Works...	1290 East 53rd Street.... 1	1		C	C	C	C		C	A	D	D			C											
Joseph T. Myerson & Son, Inc.....	5414 Lakeside Avenue.... 1	1		C	D	C	C	C	C	A	D	D			D	C	C	D								
S. A. E. Steels.....	1420 East 47th Street.... 1	1							C	A	D	C										D				
Sandvik Steel, Inc.....	1736 Columbus Road..... 3	3															D	D								
Scully Steel Products Company...	1394 East 39th Street.... 1	1		C	D				C	A	C				C	C		C								
Singer Steel Company.....	6316 Kinsman Road..... 1	1											C		C	C										
Strong Carlisle & Hammond Co....	1394 West 3rd Street.... 1	1							C		C	C						C								
Super Steels, Inc.....	7210 Stanton Avenue.... 1	1							C	A	C															
Tubular Service Corporation.....	9200 Blaine Avenue.... 3	3										C														
The Universal Steel Company.....	6600 Grant Avenue.... 1	1			O										C	C	C									
Vanadium-Alloys Steel Company...	2121 St. Clair Avenue.... 3	3																D								
Edgar T. Ward's Sons Company....	1210 East 55th Street... 1	1							C		G	C			A	E		C								
Wheelock, Lovejoy and Co., Inc...	1250 Marquette Street... 1	1	A							A	A		C													
Williams and Company, Inc.....	3700 Perkins Avenue.... 3	3										C														
Windau Steel Company.....	1565 East 17th Street... 3	3																D								
Columbus																										
The Brown Steel Company.....	Marion Road..... 1	1		C	C				C		C				C			C								
Columbus Steel Industries, Inc...	768 East 11th Avenue.... 3	3		C																						
Crane Company.....	67 North Front Street... 3	3										C														
The Ross-Willoughby Company....	269 West Spring Street.. 2	2							C		C	C						C								
F. O. Schoedinger.....	322 Mt. Vernon Avenue... 3	3													C	C										
The Smith Brothers Hardware	580 North 4th Street.... 2	2			C			C	C		C				C											
Vorys Brothers, Inc.....	79 East Goodale Street.. 2	2							C						C	C										
Dayton																										
Central Steel and Wire Company...	1095 East Monument Ave.. 1	1		C	C				C	A	D	C			C	E										
Dayton Hardware & Supply Co.....	28 North Irwin Street... 3	3							C																	
Firth-Sterling Steel Company.....		3																C								
Industrial Steel Service.....	1300 East Monument Ave.. 2	2							C		C															
The W. H. Kiefaber Company.....	40 Keowee Street..... 3	3																C								
Miami-Dickerson Steel Company...	821 Springfield Street... 1	1		C	C				C	A	C				C	C	A	D								
The Ohio Metal and Manufacturing Company.....	818 East Monument Avenue	2		C	C				C		C				C	C		C								
Quality Steels, Inc.....		2							C	A	D							C								
Western Iron and Steel Company...	P. O. Box 367..... 1	1												C	C	C	C									
Hamilton																										
Wolf and Company.....		2		C	C				C																	

WAREHOUSE DISTRIBUTORS OF "SCHEDULE A" STEEL PRODUCTS

[illegible]

NAME AND LOCATION OF WAREHOUSE	APPROXIMATE INVENTORY OF "A" PRODUCTS	PRODUCTS CARRIED IN STOCK																									
		1	2	3	4	5	6	7	8	9	10	11a	12	13	14	15	16	17	18	19	20	21	22	23	24	25	
GREAT LAKES STATES (CONT.)																											
WESTERN (CONT.)																											
... & Supply Company... 1301 Cranberry St.....	1		C	C		C		C		C			C			C											
...turing & Supply Co... 1215 Peach Street.....	3									C																	
...ware and Supply Co.....	3									C																	
... Company, Inc..... 1260 Maple Street.....	3																										
... and Steel Company.....	3		C	C						C																	
... and Sons..... 630 Elder Street.....	1		C	C						C																	
...y Company..... 1036-62 Broad Street...	3									C																	
... on and Steel Company.....	1		C	C						C																	
...ts Company..... 200 Bradley Street.....	1		C	C						C																	
... Company of America... 3125 Preble Avenue.....	1																										
... and Company..... 216 E. General Robinson St.	1		C	C						C																	
...d Company..... Terminal Way, S. S.....	2									C	S	S	S														
...ply Company..... 2635 Smallman Street.....	2									C																	
...el Company of America Ridge Ave. & Belmont St.	2									C	A																
... Steel Corporation... 3rd and Liberty Avenues.	2																										
...ndsay Company.....	3																										
...hlin Steel Corp... 26th and Jane Streets...	1		C	C						C																	
... Steel Company..... 20th and Wharton Streets	1		C	C						C																	
... Company..... 127-129 Water Street...	3																										
...ston Company..... 14th and Pike Street...	3																										
..., Inc..... 1326 W. Carson Street...	1		C	C						C																	
...ge and Supply Co... 3000 Liberty Avenue...	1		C							C	C	C															
... Products Company.....	1		C	C						C	C	A	C														
...er and Todd Company... 325 Water Street.....	2									C																	
...hinists Supply Co... S. 2nd and McKean Sts...	2		C							C																	
...neering, Inc..... 825 Behan Street, N. S.	1																										
...ducts Corporation... 3411 Smallman Street...	1																										
...ce Corporation..... 1400 Nixon Street, N.S.	1																										
..., Inc..... 117 3rd Avenue.....	1		C							C																	
... Company..... 32nd and Penn Avenue...	2		C							C	A	C															
... Company, Inc..... 901 Pennsylvania Avenue.	1																										
... Company.....	3									S																	
...le, Washington County																											
... Company, Inc.....	3									C	C																
...ware & Supply Co.....	3									C																	
...ser Hardware Co.....	3									C	C																
...rdware Company.....	3									C	C																
...ply Company.....	2									C	C																
...rling Company.....	2		C	C						C	C	A	C														

WAREHOUSE DISTRIBUTORS OF "SCHEDULE A" STEEL PRODUCTS

NAME AND LOCATION OF WAREHOUSE	APPROXIMATE INVENTORY OF "A" PRODUCTS	PRODUCTS CARRIED IN STOCK																								
		1	2	3	4	5	6	7	8	9	10	11b	12	14	16	17	19	20	21	22	23	24	25			
GREAT LAKES STATES (CONT.)																										
WEST VIRGINIA (CONT.)																										
Charleston																										
Capital City Supply Company..... 1324 Wilson Street.....	3		C			C				C									C							
Charleston Hardware Company..... 1124 Smith Street.....	2					C		C										C								
Loewenstein and Sons.....	2					C																				
Trojan Steel Company.....	1		C	C				C		3		C				C			C							
West Virginia Steel Corporation.. 900 Brooks Street.....	2		C	C				C								C										
Elkins																										
Valley Supply Company.....	3							C																		
Fairmont																										
Fairmont Supply Company..... 10th Street & Belt Line.	3							C	C																	
Jacobs & Hutchinson Hardware Co.....	3							C																		
Mont Levine.....	2			C	C											C										
Huntington																										
Banks-Miller Supply Company.....	3							C	C										C							
Huntington Boiler Works..... First St. & Third Ave...	2			C	C				C			C							C							
James J. Weiler and Sons, Inc.....	1			C	C				C			C							C							
Logan																										
Logan Hardware & Supply Company.....	3							C	C						C											
Mabscott																										
Raleigh Hardware Company.....	3							C	C										C							
Morgantown																										
General Woodworking Company..... P. O. Box 812.....	3			C																						
Pennsylvania and West Virginia Supply Corp. - Warehouse #2.....	2							C																		
Parkersburg																										
The W. H. Smith Hardware Company. 117-121 Third Street....	3							C	C							C			C							
Triadelphia																										
Pennsylvania and West Virginia Supply Corp. - Warehouse #1.....	2							C	C		C								C							
Williamson																										
Persinger Supply Company.....	2				C				C												C					
Williamson Supply Company..... Second Avenue.....	3			C	C				C	C						C										
CENTRAL STATES																										
COLORADO																										
Colorado Springs																										
Colorado Springs Supply Company.. 15 West Cucharrae St....	3			C	C		C		C																	
Western Iron Metal & Machinery Co.....	3			C	C				C		C															
Denver																										
Allegheny Ludlum Steel Corporation.....	3																									
The E. Burkhardt & Sons Steel and Iron Works Company.....	2			C	C				C							C										
Colorado Metal Products..... 424 Kalamath Street.....	3			C					C																	
C. A. Crosta, Inc..... 1830 Market Street.....	2								C																	
Crucible Steel Company of America 2635 Walnut Street.....	3																									
M. L. Foss, Inc..... 1901 Ardenhoe Street.....	2			C					C	A	C		C		C		C									
Goldberg Brothers..... 3500 Walnut Street.....	2			C					C					C		C		C								
The Grimes Pipe & Supply Co..... 1300 Larimer Street.....	3													C												
Hendrie & Bolthoff Manufacturing and Supply Company..... 1635 Seventeenth Street.	1			C	C		C	C	C		C		C			C	C	C		C						
The Mine & Smelter Supply Co..... 1422 Seventeenth Street.	2			C	C				C	C		C				C										
The Moore Hardware & Iron Co..... 1529 Fifteenth Street....	2								C																	
Silver Engineering Works, Inc.... 3309 Blake Street.....	1			C	C				C		C					C										

WAREHOUSE DISTRIBUTORS OF "SCHEDULE A" STEEL PRODUCTS

WAREHOUSE DISTRIBUTORS OF "SCHEDULE A" STEEL PRODUCTS

NAME AND LOCATION OF WAREHOUSE	APPROXIMATE INVENTORY OF "A" PRODUCTS	PRODUCTS CARRIED IN STOCK																								
		1	2	3	4	5	6	7	9	10	11a	12	14	16	17	19	20	21	22	23	24	25				
CENTRAL STATES (CONT.)																										
ILLINOIS (CONT.)																										
Peoria																										
Haggerty Brothers Company..... 923 South Washington....	2		C	C		C	C		C	C				C												
A. Lucas and Sons..... 1328 S. Washington St....	2		C	C			C																			
Pekin																										
Velde, Roelfs and Company..... 303-311 Margaret St....	3		C	C			C																			
Quincy																										
Tenk Hardware Company.....	3						C																			
INDIANA																										
East Chicago																										
Calumet Iron and Supply Company.....	2		C	C	C		C							C												
Evansville																										
Evansville Supply Company.....	3						C	C		C																
Lansing Brothers, Inc..... 211 E. Illinois Street..	3		C																							
Ohio Valley Hardware and Roofing Company..... 200 4th Avenue.....	3						C																			
Orr Iron Company..... 1100 Pennsylvania St....	1			C		C	C	C		C				C				C								
Fort Wayne																										
American Steel Supply Company.... 2511 Taylor Street.....	2		C	C			C		A					C												
The Mossman-Yarnelle Company.....	2		C				C		C									C								
The National Mill Supply Co..... 207-13 E. Columbia St...	2								C		C			C			C									
The P. and H. Supply Company.....	3										C															
Hammond																										
W. J. Holliday and Company.....	1		C	C		C	C	C	A	C	C			C		C	C			C						
Indianapolis																										
The Carpenter Steel Company..... 633 Fulton Street.....	2								A	S										D						
Crucible Steel Company of America 308 West Maryland St....	2								C	A	S									D						
O. H. Hershman..... 312 East Market St....	3																									
W. J. Holliday and Company..... 543 McCarty Street.....	1		C	C		C	C	C	A	C	C			C			C	C		C						
Indianapolis Machinery and Supply Company, Inc..... 1959 S. Meridian St....	1		C	C			C		C								C	C	C	C						
C. A. Roberts Company..... 1717 West 10th Street...	2													C												
Tanner and Company..... 409-413 South Pennsylvania Street...	1		C	C			C		C					C		D	C									
Van Camp Hardware and Iron Co.....	3		C				C		C					C												
Vonnegut Hardware Company..... 402 West Maryland St....	3					C				C																
Logansport																										
Ullery Hardware Company..... 323 East Market Street..	3							C																		
Michigan City																										
Northern Indiana Steel Supply Co. Dyson Street.....	2		C	C			C			C				C												
Muncie																										
Max Ziegler and Brothers..... 320 North Meridian St...	3		C				C																			
Richmond																										
The Queen City Supply Company.....	3						C		C										C							
San Jaffe Company..... 283 Fort Wayne Avenue...	2		C	C			C							C												
South Bend																										
Edwards Iron Works, Inc..... 2901 South Main Street..	1		C	C			C		C	C				C	C											
Hurwich Iron Company, Inc..... 151C Circle Avenue.....	3		C																							
The Tiffin Art Metal Company.....	3																									

WAREHOUSE DISTRIBUTORS OF "SCHEDULE A" STEEL PRODUCTS

NAME AND LOCATION OF WAREHOUSE	APPROXIMATE INVENTORY OF "A" PRODUCTS	PRODUCTS CARRIED IN STOCK																								
		1	2	3	4	5	6	7	9	10	11b	12	14	16	17	19	20	21	22	23	24	25				
<u>CENTRAL STATES (CONT.)</u>																										
<u>INDIANA (CONT.)</u>																										
<u>Terre Haute</u>																										
Braden Manufacturing Co., Inc.....	3														C											
Crane Company..... 209 North Ninth Street..	3										C															
Hardware Supply Company, Inc..... 940 Chestnut Street.....	2					C	C			C					C			C								
Terre Haute Heavy Hardware Co.... 545 North 13th Street...	2		C			C	C			C								C								
<u>Union City</u>																										
Union Iron and Metal Company.....	1							C		C					C	C										
<u>IOWA</u>																										
<u>Cedar Rapids</u>																										
Cedar Rapids Sheet Metal Co., Inc.....	3														C											
E. K. Larimer Hardware Co., Inc.. 120-122 First St., S. E.	3							C																		
<u>Davenport</u>																										
Nichols Wire and Steel Co.....	3															C	C									
Sieg Company.....	3							C		C								C								
<u>Des Moines</u>																										
Des Moines Iron Company..... Third & Market Streets..	2							C																		
Des Moines Steel Company..... 421 S. W. 4th Street....	2		C	C				C																		
Globe Machinery & Supply Company. 205 West Court Avenue...	3									C	C															
<u>Dubuque</u>																										
Jacobson Iron and Metal Company.. 1100 Elm Street.....	3		C	C																						
<u>Sioux City</u>																										
Pioneer Iron Works..... 408 Water.....	3		C	C				C							C											
The Sioux City Iron Company.....	2		C					C		C					C											
<u>Waterloo</u>																										
Waterloo Construction Company.... 524 Park Road.....	3		C	C				C							C											
<u>KANSAS</u>																										
<u>Baxter Springs</u>																										
Joplin Supply Company..... P. O. Box 231.....	3					C	C	C										C					C			
<u>Hutchinson</u>																										
The Hutchinson Foundry & Steel Co.....	3		C	C				C							C											
<u>Kansas City</u>																										
The Aircraft Steel & Supply Co.....	2									C	C					C										
Kansas City Structural Steel Co.. 21st & Metropolitan Ave.	2		C	C		C		C																		
Sonken-Galamba Corporation..... 64 North Second Street..	2		C	C		C		C																		
<u>Leavenworth</u>																										
The Missouri Valley Bridge and Iron Company..... 4th and Walnut Streets..	3		C	C				C																		
<u>Pittsburg</u>																										
S. A. Rose Iron and Metal Co.... 501 North Joplin.....	3					C																				
<u>Topeka</u>																										
Topeka Foundry & Iron Works Co... 300-322 Jackson St.....	2		C	C				C																		
<u>Treeco</u>																										
Consolidated Supply Company.....	1		C		C	C	C								C			C				C	C			

WAREHOUSE DISTRIBUTORS OF "SCHEDULE A" STEEL PRODUCTS

NAME AND LOCATION OF WAREHOUSE	APPROXIMATE INVENTORY OF "A" PRODUCTS	PRODUCTS CARRIED IN STOCK																								
		1	2	3	4	5	6	7	8	9	10	11b	12	14	16	17	19	20	21	22	23	24	25			
CENTRAL STATES (CONT.)																										
KANSAS (CONT.)																										
Wichita																										
The Aircraft Steel & Supply Co... 415-421 N. Water St....	3																C		D							
George C. Christopher and Son																	C									
Iron Works..... 1200 Blaine Street.....	1		C	C				C		C							C									
The Martin Metal Mfg. Company.... 900 East Second Street...	3																C	C								
Watkins, Inc..... 710 East First Street...	2			C	C			C		C							C									
Western Iron and Foundry Co..... 702 Second Street.....	3			C	C			C																		
KENTUCKY (WESTERN)																										
Greenville																										
Central Supply Company.....	3							C	C																	
Paducah																										
The Paducah Iron Company..... 229-233 S. First St....	2			C	C			C		C							C			C						
Henry A. Petter Supply Company.....	2				C			C	C		C	C					C				C					
MICHIGAN (WESTERN)																										
Escanaba																										
Delta Hardware Company..... 4th Street North.....	3			C				C							C	C	C			C						
Grand Rapids																										
Grand Rapids Steel & Supply Co... 21-35 Market Ave., S.W..	1			C	C			C		C							C									
Peninsular Steel Company..... 1590 Madison Ave., S.E..	3								A	C										A						
Iron Mountain																										
Lake Shore Engineering Company.....	3																			C						
Ironwood																										
Lesselyong Hardware Company..... 228-32 Ayer Street.....	3			C	C			C	C		C						C									
Kalamazoo																										
Bard Steel & Mill Supply Co..... 251 N. Edwards Street...	2			C				C		C		C					C			D						
Kalamazoo Mill Supply Company.... 614 Portage Street.....	3										C						C			C						
Menominee																										
Northern Hardware & Supply Co.....	3							C		C							C									
Muskegon																										
Fisher Iron and Metal Company.... 259 Ottawa.....	3			C																						
Towner Hardware Company.....	2			C				C	A	C			C				C	C		D						
Sault Ste. Marie																										
The Soo Hardware Company.....	3							C		C							C			C						
MINNESOTA																										
Duluth																										
Fox Supply Company..... 210 E. Superior St....	3																									
Kelley How Thomson Company..... 309 S. 5th Ave., W.....	3										C		C				C				C					
Marshall Wells Company..... Lake Avenue, South.....	2			C	C			C	C		C		C				C			C						
Zalk Josephs Company.....	1			C	C	C	C	C	A	C		C					C	C		C						
Minneapolis																										
Minneapolis Iron Store..... 528 Washington Ave., N..	1			C	C			C		C		C					C			D						
Minnesota Steel Supply Company... 207 Sixth St., N. E.....	2							C									C	C	C							
The Williams Hardware Company.... 100 Second Ave., N.....	1			C	C			C		C							C	C		C						

WAREHOUSE DISTRIBUTORS OF "SCHEDULE A" STEEL PRODUCTS

NAME AND LOCATION OF WAREHOUSE		APPROXIMATE INVENTORY OF "A" PRODUCTS	PRODUCTS CARRIED IN STOCK																									
			1	2	3	4	5	6	7	8	9	10	11	12	13	14	15	16	17	18	19	20	21	22	23	24	25	
CENTRAL STATES (CONT.)																												
MINNESOTA (CONT.)																												
St. Paul																												
Nicols, Dean and Gregg.....	8th and Sibley Sts.....	2							C		C						C											
Paper Calmenson and Company.....	975 East 7th Street.....	1		C	C		C	O	C	A	C	C					C		C	C	O	C						
Russell Newman Supply Company....	2229 Charles Street.....	2							C								C		C	C	C							
Scully Steel Products Company.....		1		C	C		C		C	A	E	C					C		C	E		C						
MISSOURI																												
Joplin																												
General Steel Products Company...	2002 West 7th Street....	3		C	C				C									C										
Ozark Engineering Company.....		3		C	C																							
Kansas City																												
Bonniwell Calvin Iron Company....	1033 Hickory.....	2							C		C							C				C						
Brown-Strauss Corporation.....	1446 Guinette.....	3		C	C																							
Ellfeldt Machinery & Supply Co....	1219 McGee Street.....	3																				D						
The Faeth Company.....	2029 Harrison.....	1		C	C				C		C							C				C						
Langdon Supply Company.....	1317-19 Union Avenue.....	3										C																
Metal Goods Corporation.....	1701 Baltimore Avenue...	3									C									S								
Milcor Steel Company.....		3																	C									
Missouri Aviation Corporation....	416 Admiral Blvd.....	3							A			A							C		A							
Richards & Conover Hardware Co...	5th and Wyandotte Sts...	1		C	C		C	C		C					O			C				C						
Steel Manufacturing and Warehouse Company.....	1449 Genesee Street.....	2			C				C		C							C		C	C							
Townley Metal & Hardware Co.....	200 Walnut Street.....	3							C						C			C								C		
North Kansas City																												
Builders Steel Company.....	12th and Gentry Streets.	2		C	C				C									C										
St. Francois																												
Bonne Terre Farming & Cattle Co.....		2		C	C				C	A	C														A	C		
St. Joseph																												
Ross-Frazier Iron Company.....	210-214 South 4th St....								C																			
St. Louis																												
Allegheny Ludlum Steel Corporation.....		3								A												A						
Beck and Corbett Company.....	Main and Ashley Sts.....	1		C	C		C	C	A	C		C					C	C	C			C						
The Carpenter Steel Company.....	4063 Forest Park Avenue.	3							S		S											C						
Crucible Steel Company of America	1021 Chouteau Avenue....	2							C	A									S									
Donovan Iron & Supply Company....	812 North First Street..	2		C	C		C	C				O						C										
Hammond Sheet Metal Company.....	119 Cass Avenue.....	2							C									C	C	C								
Handlan, Inc.....	First, Poplar & Plum St.	3					C																					
The Medart Company.....	3500 DeKalb Street.....	1										C																
Metal Goods Corporation.....	5239 Brown Avenue.....	3										S	S							S								
Republic Steel Corporation - Berger Manufacturing Division..	1425 North 2nd Street...	3																										
C. A. Roberts Company.....	907 Carr Street.....	2																C										
Joseph T. Ryerson and Son, Inc....	5 Clinton Street.....	1		C	D		C	C	C	A	D	C						D	C	C	D							
Schurk Iron Works, Inc.....	5425 Manchester Avenue..	1		C	C				C			C																
Scully Steel Products Company.....		1		C	C		C	C	C			C						C										
Sligo Iron Store Company.....	1301 North Sixth Street.	1		C	C				C		C							C				C						
E. W. Souther Iron Company.....	1952 Kienlen Avenue.....	3							C									C	C	C		C						
Steel Sales Corporation.....	4565 McRee Avenue.....	1							C		C	C						C	C			C						
Vanadium-Alloys Steel Company.....		3																										
MONTANA																												
Billings																												
Billings Hardware Company.....		3		C					C									C										
Great Northern Tool & Supply Co..	2224 Minnesota Avenue...	3		C	C				C	A	C											C						
Marshall-Wells Company.....		3		C	C		C		C		C							C				C						
Winter Hardware Company.....		3		C					C									C										
Butte																												
Montana Hardware Company.....	823 South Montana Ave...	3		C			C	C	C		C											C						

		APPROXIMATE INVENTORY OF "A" PRODUCTS	PRODUCTS CARRIED IN STOCK																								
NAME AND LOCATION OF WAREHOUSE			1	2	3	4	5	6	7	8	9	10	11	12	13	14	15	16	17	18	19	20	21	22	23	24	25
CENTRAL STATES (CONT.)																											
WISCONSIN (CONT.)																											
Madison																											
Wiedenbeck, Dobelin Company.....		2			C	C			C		C							C									
Manitowoc																											
The Huchthausen Company..... 8th & Washington Sts....		3																									
Frank J. Kerscher Company..... 7th and York Streets....		3							C									C									
J. J. Stangel Hardware Company... 8th and Quay.....		2							C			C															
Milwaukee																											
Columbia Tool Steel Company..... 441 North 6th Street....		3																									D
Crucible Steel Company of America 135 East Pittsburgh St..		3									A	A															A
Gibbs Steel Company..... 338 South 17th Street...		1			C	C			C			C						C									
Milcor Steel Company.....		2							C									C									
Moise Steel Company..... 4027 West Scott Street..		1			C	C			C			C						C		C							
John Pritzlaff Hardware Company.....		2							C			C						C									C
Joseph T. Ryerson and Son, Inc... 320 South 19th Street...		1			C	C			C		A	C						C		C	C						A
Shadbolt and Boyd Company..... 413 North 2nd Street....		1				C			C		C	C						C		C							C
Edgar T. Ward's Sons Company..... 6623 West Mitchell St..		1							C		A	G			C			E									C
Wisconsin Bridge & Iron Company.. 5023 North 35th Street..		1			C	C												C									
Werden-Allen Compaany..... 3rd St. & W. Capitol Dr.		1			C	C		C				C						C									
Recine																											
Mohr-Jones Hardware Company..... 315 Sixth Street.....		3							C			C						C									
Waukesha																											
Alloy Products Company..... 221-241 Madison Street..		3													S												
Wisconsin Rapids																											
Frank Gerber Company..... McKinley Street.....		3			C	C																					
WYOMING																											
Sheridan																											
Sheridan Iron Works, Inc.....		3			C				C									C		C							
SOUTHERN STATES																											
ALABAMA																											
Anniston																											
Anniston Hardware Company.....		3							C	C		C									C						
Birmingham																											
Allegheny Ludlum Steel Corporation.....		3																									
Arnold Supply Company..... 2923 South 5th Avenue...		3																C									A
Birmingham Rail & Locomotive Co.....		1						C	C	C																	
Crane Company..... 2 South 20th Street....		3																									
The Ingalls Iron Works Company.....		1			C	C			C									C									
Long Lewis Hardware Company.....		3							C			C															
Mine & Contractors Supply Co..... 930 2nd Avenue, North...		3																									
Moore-Handley Hardware Company.....		1			C	C			C			C	C					C									C
The Perry Supply Company, Inc.....		3							C			A									C						
Southern Car & Manufacturing Co.. 400 South 7th Street....		2			C	C			C									C									
Southern Steel Company.....		1			C	C			C			C						C									
Wimberly & Thomas Hardware Company, Inc..... Avenue "A" & 16th St....		3							C		C							C									
The Young and Vann Supply Co..... 1725-1731 First Avenue..		2			C	C			C	C		C	C					C									D
Gadsden																											
Gadsden Hardware Company.....		3			C	C			C			C						C									

		APPROXIMATE INVENTORY OF "A" PRODUCTS		PRODUCTS CARRIED IN STOCK																								
NAME AND LOCATION OF WAREHOUSE				1	2	3	4	5	6	7	8	9	10	11a	12	13	14	15	16	17	18	19	20	21	22	23	24	25
SOUTHERN STATES (CONT.)																												
ALABAMA (CONT.)																												
Mobile																												
McGowin-Lyons Hardware and Supply Company.....	113 North Water St.....	2																										
Mobile Steel Company, Inc.....		2																										
Standard Equipment Company.....		3																										
Turner Supply Company.....	St. Louis & Commerce....	2																										
Montgomery																												
Alabama Machinery & Supply Co.....		2																										
Selma																												
Selma Foundry & Machine Company.....		2																										
Tarrant																												
Vulcan Rivet and Bolt Corp., Inc.....		3																										
Tuscaloosa																												
Charles Temerson and Sons.....		2																										
ARKANSAS																												
Fort Smith																												
Bruce-Rogers Company.....	51 South Sixth St.....	3																										
Speer Hardware Company.....		3																										
Little Rock																												
Central Supply Company.....	105 Scott Street.....	2																										
Fones Brothers Hardware Co.....	2nd and Rock Streets....	3																										
Hollis and Company.....	305-307 E. Markham St....	2																										
J. W. Mast Hardware.....	218 East Markham Street..	3																										
Pine Bluff																												
Arkansas Mill Supply Company.....		3																										
FLORIDA																												
Gainesville																												
Baird Hardware Company, Inc.....	115 Main Street.....	3																										
Jacksonville																												
The Aetna Iron and Steel Company.	2144 Market Street.....	2																										
The Cameron and Barkley Company.....		3																										
J. G. Christopher Company.....		1																										
Farguhar Machinery Company.....	720-728 West Bay Street..	2																										
Florida Pipe & Supply Co., Inc...	825 North Myrtle Ave....	3																										
Georgia Supply Company.....	819 East Bay Street.....	3																										
Lakeland																												
Mine and Mill Supply Company.....		2																										
Miami																												
A & B Pipe & Metal Company, Inc..	500 N. W. 5th Street....	2																										
Frank T. Budge Company.....		3																										
The Cameron and Barkley Company.....		3																										
Railley-Milan, Inc.....	27 West Flagler Street..	2																										
Ocala																												
Marion Hardware Company, Inc.....		3																										
Orlando																												
Harry F. Lou, Inc.....		2																										

WAREHOUSE DISTRIBUTORS OF "SCHEDULE A" STEEL PRODUCTS

NAME AND LOCATION OF WAREHOUSE	APPROXIMATE INVENTORY OF "A" PRODUCTS	PRODUCTS CARRIED IN STOCK																								
		1	2	3	4	5	6	7	9	10	11b	12	14	16	17	19	20	21	22	23	24	25				
<u>SOUTHERN STATES (CONT.)</u>																										
<u>FLORIDA (CONT.)</u>																										
<u>Panama City</u>																										
Panama Machinery & Supply Co.....	2				C	C			C		C															
<u>Pensacola</u>																										
Pensacola Tool & Supply Corp..... P. O. Box 1509.....	2				C	C			C	A				C												
<u>Tampa</u>																										
Booker and Dickson, Inc..... Morgan and Bell Streets.	3				C				C																	
The Cameron and Barkley Company.. 107 South Franklin St....	2				C	C			C	C		C		C												
Eagle Roofing & Art Metal Works.. Madison & Brush Sts.....	3								C						C											
Knight and Wall Company..... Tampa & Lafayette Sts....	2								C																	
<u>GEORGIA</u>																										
<u>Albany</u>																										
Georgia Hardware & Supply Co..... 307-309 N. Washington St.	3				C				C		C			C												
<u>Athens</u>																										
The Athens Hardware Company.....	3				C				C										C							
The Farmers Seed & Hardware Co.....	3								C																	
<u>Atlanta</u>																										
Atlantic Steel Company.....	2				C				C																	
Beck and Gregg Hardware Co..... 217 Luckie Street.....	3				C				C																	
Boykin Tool & Supply Company..... 67 Courtland Street, N.E.	3								C					C					C							
Bremen Steel Company..... 329 Decatur Street.....	2				C	C			C						C											
Conklin Tin Plate & Metal Co..... P. O. Box 978.....	2								C						C	C										
Crucible Steel Company of America 361 Whitehall Street....	2								C	A	S				S				D							
Fulton Supply Company..... 342 Nelson Street, S. W.	2				C	C			C		C								C							
Pye-Barker Supply Company..... 244 Forsyth Street, S. W.	3								C		C															
Sharp-Horsey Hardware Company.... 276 Marietta St., N. W.	3								C						C											
Stein Steel & Supply Company..... 295 Decatur Street.....	2				C	C		C	C			C														
J. M. Tull Metal and Supply Company, Inc..... 285 Marietta Street.....	2				C				C	E	C		C	C	S											
<u>Augusta</u>																										
Augusta Mill Supply Company..... Washington & Fenwick St.	3				C				C		C															
S. Donald Fortson Company..... 901 Reynolds Street.....	2				C				C		C				C											
<u>Bainbridge</u>																										
Bower Company.....	3								C																	
Oak City Supply Company.....	3										C															
<u>Columbus</u>																										
Columbus Iron Works Company.....	2				C				C		C	C			C											
<u>LaGrange</u>																										
Industrial Supplies, Inc.....	3										C															
<u>Macon</u>																										
R. C. Cropper Company..... 7th and Mulberry Sts....	3								C																	
C. W. Farmer..... 521 Fifth Street.....	3				C	C			C		C			C												
Macon Supply Company, Inc.....	3				C				C					C												
Taylor Iron Works & Supply Co.... 1014 Broadway Street....	2				C	C		C	C		C	C		C				C								
<u>Rome</u>																										
Batley Machinery Company, Inc.....	2				C	C			C		C			C				C								
<u>Savannah</u>																										
Georgia Supply Company..... 26-32 Bay St., West....	3				C	C		C	C		C			C				C								
Morgan's Inc..... 111 West Broad Street...	3				C	C			C					C	C			C					C			

WAREHOUSE DISTRIBUTORS OF "SCHEDULE A" STEEL PRODUCTS

NAME AND LOCATION OF WAREHOUSE	APPROXIMATE INVENTORY OF "A" PRODUCTS	PRODUCTS CARRIED IN STOCK																								
		1	2	3	4	5	6	7	8	9	10	11a	12	13	14	15	16	17	18	19	20	21	22	23	24	25
SOUTHERN STATES (CONT.)																										
GEORGIA (CONT.)																										
West Point																										
Batson-Cook Company, Inc.....	3		C	C				C		C																
LOUISIANA																										
Alexandria																										
Brown-Roberts Hardware and Supply Company, Ltd..... 3rd and Xavier Street...	3							C		C																
Lake Charles																										
Norvell Wilder Supply Company.....	3							C																		
Monroe																										
Weeks Supply Company, Ltd.....	3		C	C			C	C		C		C					C									
New Orleans																										
Cahn Brothers and Ryder, Inc..... 900 South Peters Street.	2		C					C									C		C							
Dixie Mill Supply Company, Inc... Tchoupitoulas and St. Joseph Streets....	3											C														
Jones & Laughlin Steel Corp..... Industrial Canal.....	1		C	C			C	C	A	C		C					C				C			C		
Marine Specialty and Mill Supply Company, Inc..... 201 Julia Street.....	2		C					C		C		C					C									
Murray-Baker-Frederic, Inc.....	2		C	C			C	C		C		C					C							C		
C. T. Patterson Company, Inc..... 800 South Peters Street.	2							C		C		C					C									
Peter P. Rowan Company, Ltd.....	3							C																		
Standard Supply & Hardware Company, Inc..... P. O. Box 620.....	1		C	C			C	C		C		C					C				C					
R. J. Tricon Company..... 747 Tchoupitoulas Street	3									C																
Oliver H. Van Horn Co., Inc..... 524 Camp Street.....	3									C														D		
Woodward, Wight & Co., Ltd..... 451 Howard Avenue.....	1		C	C			C	C		C		C					C				C			C		
Shreveport																										
The J. B. Beard Corporation.....	2		C	C				C									C									
Dixie Mill Supply Company, Inc... 200 Edwards Street.....	3								A	C			C													
Hollis and Company.....	3							C		C		C														
Peerless Supply Company, Inc.....	2		C	C				C		C							C									
Pelican Well Tool & Supply Co.....	2		C	C			C			C		C					C									
MISSISSIPPI																										
Greenwood																										
Henderson and Baird Hardware Co.....	3							C																		
Hattiesburg																										
Komp Equipment Company.....	3		C					C		C							C		C							
Jackson																										
Ellis Supply Company..... 619 East South Street...	3		C	C				C																		
Mississippi Foundry & Machine Co. 306 West South Street...	3		C	C				C		C		C					C					C				
Laurel																										
Laurel Machine & Foundry Company.....	3		C	C				C	A	C							C									
Natchez																										
Feltus Brothers Hardware Company.....	3							C									C									
Tupelo																										
Tupelo Hardware Company.....	3							C																		

WAREHOUSE DISTRIBUTORS OF "SCHEDULE A" STEEL PRODUCTS

[illegible]

WAREHOUSE DISTRIBUTORS OF "SCHEDULE A" STEEL PRODUCTS

		APPROXIMATE INVENTORY OF "A" PRODUCTS	PRODUCTS CARRIED IN STOCK																								
NAME AND LOCATION OF WAREHOUSE			1	2	3	4	5	6	7	8	10	11b	12	14	16	17	19	20	21	22	23	24	25				
SOUTHERN STATES (CONT.)																											
TENNESSEE (CONT.)																											
Knoxville																											
C. M. McClung and Company.....		3						C	C		C	C			C												
Memphis																											
J. E. Dilworth Company.....		3							C		C				C												
Harris Iron and Supply Co..... 236 South Front Street..		3			C				C		C				C	C											
Hays Supply Company..... 269 South Front Street..		2			C	C			C		C				C				C								
Jones and Laughlin Steel Corp.... 1 Auction Avenue.....		1			C	C			C		C				C	C						C					
Lewis Supply Company..... Main at Butler Street...		2			C				C		C						C										
Orgill Brothers & Company..... West Calhoun Street....		3							C		C					C				C							
Pidgeon-Thomas Iron Company..... Foot Iowa and Main St...		1			C	C			C	C		C			C					C							
The Richman-Crosby Company..... 229 South Front Street..		2			C				C	C		C			C	C				C							
Morristown																											
Whittaker-Holtzinger Hardware Co.....		3			C					C		C				C											
Nashville																											
Buford Brothers, Inc.....		2			C	C				C		C				C				C							
T. L. Herbert and Sons, Roofing and Sheet Metal Department.... 601 Harrison Street....		3														C											
Keith, Simmons Company, Inc.....		2			C				C	C		C				C				C							
H. G. Lipscomb and Company..... 113-133 First Avenue....		3							C							C											
Nashville Machine & Supply Co.... 119-135 3rd Avenue, N...		3							C		C		C														
C. H. Reese and Sons..... 1309-11 Church Street...		3								C						C											
TEXAS																											
Amarillo																											
Clowe and Cowan, Inc..... 401 Harrison Street....		3								C		C		C		C											
Morrow-Thomas Hardware Company... 316 Polk Street.....		3			C					C		C				C			A								
Austin																											
The Walter Tips Company..... 200 Colorado Street....		3								C		C				C											
Beaumont																											
Norvell-Wilder Supply Company.....		2								C		C							C								
Brownsville																											
Alamo Iron Works.....		2			C	C				C		C		C		C											
Corpus Christi																											
Alamo Iron Works.....		2			C	C				C		C		C		C											
San Antonio Machine and Supply Company.....		2			C	C				C				C		C											
Dallas																											
Briggs-Weaver Machinery Company. 309 North Market Street...		2								C		C		C						C							
Continental Steel Sales Corp.....		2														C											
Higginbotham-Pearlstone Hardware Company..... Market and Ross Avenue....		3								C						C											
Moncrief-Lenoir Manufacturing Company, Inc.....		2								C						C	C										
The Murray Company.....		2			C	C				C		C				C											
New Process Roofing and Supply Company..... 1709 South Lamar Street...		2								C						C	C	C									
The Southern Supply Company.....		2			C					C		C		C													
El Paso																											
Darbyshire-Harvie Iron and Machine Company..... 1800 E. San Antonio St..		2			C	C				C		C				C				C			C				
Hoyland Steel Company, Inc..... 1214 Mills Building....		3																	C								

WAREHOUSE DISTRIBUTORS OF "SCHEDULE A" STEEL PRODUCTS

NAME AND LOCATION OF WAREHOUSE	APPROXIMATE INVENTORY OF "A" PRODUCTS	PRODUCTS CARRIED IN STOCK																								
		1	2	3	4	5	6	7	8	9	10	11a	12	13	14	15	16	17	18	19	20	21	22	23	24	25
SOUTHERN STATES (CONT.)																										
VIRGINIA																										
Andover																										
Central Supply Co. of Virginia, Inc.....	2		C	C			C	C		C							C					C	C			
Bristol																										
Bristol Steel & Iron Works, Inc.....	2			C	C				C								C									
Danville																										
Piedmont Hardware Company, Inc.....	3								C																	
Lynchburg																										
N. B. Handy Company.....	3								C								C									
Norfolk																										
Eagleston-Parke, Inc.....	1			C	C				C		C						C					C				
R. W. Hudgins and Son.....	3							C	C		C															
Taylor-Parker Company, Inc.....	2							C	C		C		C									C				
Tidewater Supply Company, Inc.....	2			C	C			C	C		C		C				C						D			
The Henry Walke Company.....	2				C				C		C						C									
Norton																										
Norton Hardware Company.....	3							C	C																	
Richmond																										
Gordon Metal Company.....	2			C	C				C								C	C								
Liphart Steel Company, Inc.....	2			C	C				C																	
James McGraw, Inc.....	2			C	C				C		C		C				C					C				
Smith-Courtney Company.....	3										C		C									C				
Southern Railway Supply Co., Inc.	2				C				C		C						C					C				
Roanoke																										
Roanoke Tractor & Equipment Corporation.....	3																									
Tidewater Supply Company, Inc.....	2			C	C			C	C		C						C					C				
PACIFIC STATES																										
ARIZONA																										
Kingman																										
Central Commercial Company.....	3			C	C		C	C	C								C			C						
Phoenix																										
Allison Steel Manufacturing Co.....	1			C	C	C	C	C	C	A	C						C					C				
Arizona Hardware Company.....	3			C		C			C								C									
Pratt-Gilbert Hardware Company.....	2			C	C	C		C	C	C		C					C					C				
Prescott																										
Arizona Mining Supply Corp.....	2			C	C		C	C	C		C						C				C				C	
Tucson																										
Albert Steinfeld and Company.....	2			C	C		C	C	C								C					C				
CALIFORNIA																										
Bakersfield																										
Hopper Machine Works, Inc.....	2			C	C	C			C								C									
McCarthy Tank and Steel Co.....	2			C	C				C								C									
Berkeley																										
American Rolling Mill Company of California.....	1				C												D	E	C							

WAREHOUSE DISTRIBUTORS OF "SCHEDULE A" STEEL PRODUCTS

NAME AND LOCATION OF WAREHOUSE	APPROXIMATE INVENTORY OF "A" PRODUCTS	PRODUCTS CARRIED IN STOCK																						
		1	2	3	4	5	6	7	9	10	11b	12	14	16	17	19	20	21	22	23	24	25		
PACIFIC STATES (CONT.)																								
CALIFORNIA (CONT.)																								
Eureka																								
Eureka Boiler Works.....	Foot of "S" St.....	2		C	C			C		C				C				C						
Fresno																								
Federal Pipe & Supply Company....	1220 Parallel Avenue....	2		C	C			C		C				C										
Kyle and Company.....	346 G Street.....	1		C	C			C		C				C	C			C						
Grass Valley																								
Alpha Stores, Ltd.....	204 West Main Street....	2					C	C										C						
Glinch Mercantile Company.....	East Bennett Street....	2			C		C	C	C															
Huntington Park																								
Mahl Steel and Supply Company....	3081 East Slauson Ave...	2		C	C			C		C				C	C									
Long Beach																								
American Wholesale Hardware Co...	1500 West Anaheim.....	1		C	C			C		C				C	C									
Los Angeles																								
Allegheny Ludlum Steel Corporation.....		3		S					A	S						S		A						
Almquist Bros. and Viets.....	2027 Santa Fe Avenue....	3																D						
Baker Steel and Tube Company.....	955 South Alameda St....	3									C													
Braeburn Alloy Steel Corporation.....	1855 Industrial Street...	3																A						
Emil Brown and Company.....	6309 South Central Ave..	1		C	C			C		C				C	C	C								
California Hardware Company.....	500 East First Street...	1		C	C		C	C		C				C	C									
California Metals and																								
Engineering Corporation.....	1010 N. McCadden Place..	1			C			C	A	C	A			C	C	A								
A. M. Castle and Company.....	2200 East 55th Street...	1			C	C			C	E	C			C	E	C								
Columbia Steel Company.....		1		D	C	D			C	A	D		C	C		D	G	C						
Commonwealth Steel and Supply																								
Corporation.....	2150 Sacramento Street..	2			C	C			C	C	C			C	C			C						
Coulter, Sibbett and Burke.....	6101 Wilmington Avenue..	2		A					C	A	C							A						
Crucible Steel Company of America	1207 Santa Fe Avenue....	2							C	A	A					C		D						
Drake Supply Company.....	1823 E. Washington Blvd.	1			C		C	C		C		C		C										
Ducommun Metals and Supply Co...	4890 South Alameda.....	1			C	C			C	A	G	C		D	E			D						
Dunning Iron Store Company.....	475 East 3rd Street....	3			C				C					C				C						
Electric Steel Foundry Company...	2700 S. Santa Fe Ave...	3							S	S	S					S								
Firth-Sterling Steel Company.....		3							S									D						
Garrett Supply Company.....	3844 Santa Fe Avenue....	2							A	D														
Great Western Steel Co., Inc.....	1011 East 61st Street...	3																						
Harper and Reynolds Corp.....	152 North Main Street...	3			C	C			C		C			C				A						
Hoyland Steel Company.....	1011 East 61st Street...	2		A							C							C						
Jamison Steel Corporation.....	2168 East Olympic Blvd..	2								C	A	A						D						
Earle M. Jorgensen Company.....	10510 South Alameda St..	1		G	C	D				C	F	G		D				D						
Junior Steel Company.....	1960 South Alameda St...	3			C																			
Keliher Hardware Company.....	1501 East Olympic Blvd.	2			C	C				C		C		C										
Los Angeles Iron & Steel Co.....	1522 Santa Fe Avenue....	2			C	C		C		C		C		C										
Maas Steel Company.....	2306 East 48th Street...	2												C	C									
Machinists' Tool & Supply Co....	3690 Santa Fe Avenue....	3																A						
Pacific Metals Company.....	1400 South Alameda St...	3																						
Pennsylvania Iron & Steel Co....	2451 East 23rd Street...	1			C	C			C		C			C										
Percival Steel & Supply Co.....	4600 Santa Fe Avenue....	1			C	C			C		C			C	C			C						
Rawlins Brothers, Inc.....	5959 South Alameda St...	1			C	C		C	C		C			C	C									
Reliance Steel Products Co.....	2053 East 37th Street...	1							C															
The R-J-M Warehouse.....	238 South Mission Road..	1			C	C			C		C													
Sandvik Steel, Inc.....	4415 South Main Street...	3																C						
Service Steel Company.....		2										G												
Southern Steel & Supply Company..	612 East 12th Street...	3			C				C															
Roy R. Sweet.....	1041 Venice Blvd.....	3																						
Triangle Steel Corporation.....	2415 Santa Fe Avenue....	2			C	C			C									A						
Union Hardware & Metal Company...	411 East First Street...	1			C	C		C	C	A	G	C		C	E			D						
Universal Buyers, Inc.....	3360 East Pico Blvd.....	2			C	C			C		C			C										
Oakland																								
Allegheny Ludlum Steel Corporation.....		3																A						
American Brass and Copper Co.....	363-383 7th Street.....	3								S	E			S										
Beattie Steel & Supply Co., Inc...	1650 32nd Street.....	1			C	C			C		C			C										
George R. Borrmann Steel Co.....	25 8th Street.....	1			C	C			C		E			C	C	C								
A. W. Castle and Company.....		1			C	C			C		C			C	E	C		C						

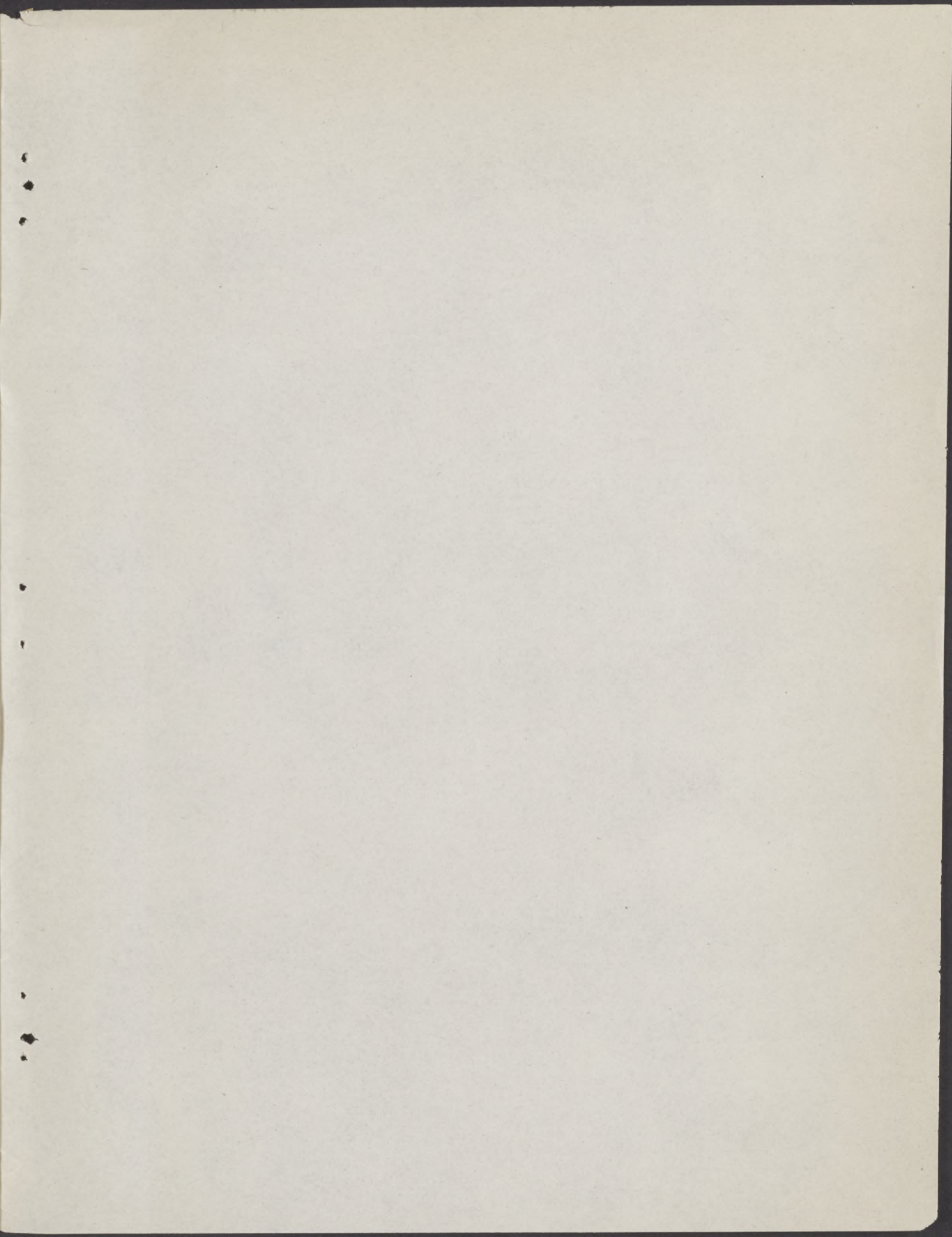
NAME AND LOCATION OF WAREHOUSE		APPROXIMATE INVENTORY OF "A" PRODUCTS	PRODUCTS CARRIED IN STOCK																									
			1	2	3	4	5	6	7	8	9	10	11a	12	13	14	15	16	17	18	19	20	21	22	23	24	25	
PACIFIC STATES (CONT.)																												
CALIFORNIA (CONT.)																												
Oakland (Cont.)																												
Coulter-Sibbett Steel Company....	240 Eighth Street.....	2		A					C	A	D										D							
Earle M. Jorgensen Company.....	1657 22nd Street.....	1		D	C	D			C	A	C							D			D					D		
Oakland Sheet Metal Supply Co....	2100 Poplar Street.....	3																C	C	C								
Sacramento																												
Slakey Brothers.....	15th and Spear Streets..	3							C									C										
The Thomaon-Diggs Company.....	3rd and "R" Streets....	2							C	C	C							C			C							
San Bernardino																												
Southern Machinery & Supply Co...	174 South G Street.....	2			C	C			C	A								C			C							
San Diego																												
Southern Equipment & Supply Co...	668 Third Avenue.....	3			C				C			C		C				C		C	C	C	C					
Western Metal Supply Company.....	215 7th Avenue.....	1			C	C			C		C							C	C	C	C	C						
San Francisco																												
Allegheny Ludlum Steel Corporation.....		3		S						A	S								S		A							
Baker Hamilton & Pacific Co.....	700 7th Street.....	1			C	C		C	C	C	C							C			C					C		
California Iron and Steel Co.....	34 Missouri Street.....	1			C	C			C	C	C							C										
Walter R. Carr Company.....	770 Folsom Street.....	3																			A							
Charles W. Carter Company.....	525 4th Street.....	3																										
A. M. Castle and Company.....		1			C	C						C																
Columbia Steel Company.....	Russ Building.....	1			C	C		C	C	C	C			C				C	E	C	C							
Continental Steel & Supply Co....	833 Harrison Street....	3							C		C							C		C								
Crane Company.....	301 Brannan Street....	3																										
Crucible Steel Company of America	129 Fremont Street.....	2								F	S																	
Dunham, Carrigan & Hayden Co....	2 Kansas Street.....	2			C	C		C	C	C	C																	
Foucar, Ray and Simon.....	512 Folsom Street.....	1		A	C	C				C	A	D	C					C	C	C								
Gilmore Steel & Supply Co., Inc.	825 Folsom Street.....	1			C	C				C	C	C						C	C	C								
Jamison Steel Corporation.....	508 4th Street.....	2		A						C	A	A						C										
C. W. Marwedel.....	1235 Mission Street....	2										C	C						C									
Northern California Hardware and Steel Company.....	209 Mississippi Street..	1			C	C		C	C	C	C							C			C							
Pacific Metals Company, Inc.....	3100 19th Street.....	2																										
Pacific Portland Cement Company..	275 Metoma Street.....	3																										
Scheid Heavy Hardware and Steel Company.....	329 Tehama Street.....	2			C	C				C	C							C										
Soule Steel Company.....	1750 Army Street.....	1			C	C				C	C							C										
Tay-Holbrook, Inc.....	165 Eighth Street.....	1								C								C	E	C								
Taylor and Spotswood Company.....	698 Minnesota Street....	1			C	C				C	A	C	C					C	C		C							
San Jose																												
San Jose Hardware Company.....	62 West San Fernando....	2			C	C				C	C							C	C									
San Jose Supply House.....	520 South First Street..	3			C					C	C							C										
Stockton																												
Austin Brothers, Inc.....	301 South Aurora Street.	2			C	C			C	C	C							C										
Hickinbotham Brothers, Ltd.....	536 South Aurora Street.	1			C	C				C	A	D						C	C		C							
Kyle and Company.....	348 Harrison Street.....	1			C	C				C	A	C						C			C							
IDAHO																												
Boise																												
Idaho Hardware & Plumbing Company, Ltd.....	408 South 8th Street....	3					C	C	C									C			C							
Salt Lake Hardware Steel Warehouse.....		3			C					C								C										
Sawtooth Company.....	P. O. Box 2088.....	2			C	C				C	C							C				C				C		
Lewiston																												
Erb Hardware Company.....		3								C										C								
Hahn Plumbing & Heating Supply Co.....		3																C										

WAREHOUSE DISTRIBUTORS OF "SCHEDULE A" STEEL PRODUCTS

NAME AND LOCATION OF WAREHOUSE	APPROXIMATE INVENTORY OF "A" PRODUCTS	PRODUCTS CARRIED IN STOCK																							
		1	2	3	4	5	6	7	8	9	10	11b	12	14	16	17	19	20	21	22	23	24	25		
PACIFIC STATES (CONT.)																									
IDAHO (CONT.)																									
Pocatello																									
Paul Roberts Machinery and Supplies.....	2			C	C					C						C									
Wallace																									
Coeur D'Alene Hardware and Foundry Company.....	2			C	C		C	C	C		C						C		C						
OREGON																									
Baker																									
Basche Sage Hardware Company.....	3			C	C		C	C	C		C					C			C						
Bend																									
Bend Hardware Company.....	2			C	C				C							C				C					
Eugene																									
R. A. Babb Hardware Company.....	1			C	C				C		C					C									
Klamath Falls																									
Klamath Machine & Locomotive Works.....	2			C	C				C	A	C					C									
Lorenz Company.....	2			C	C			C	C		C					C									
Marshfield																									
A. B. Daly and Company.....	3			C	C				C							C									
North Bend																									
Coos Bay Salvage and Steel Co....	3			C	C	C		C	C		C					C									
Portland																									
Barde Steel Company.....	1			C	C	C			C		C		C		C	C	C								
Columbia Steel Company.....	1			C	C				C	C					C		C	C	C						
A. W. Davis Supply Company.....	3			C	C			C	C				C			C				C					
J. E. Heseltine and Company.....	1			C	C				C	A	C					C				C					
Jacobs and Gile, Inc.....	2			C	C				C							C	C	C							
Mallory Logging Equipment Co....	3														C										
Marshall-Wells Company.....	1			C	C			C	C	A	C					C									
Northwest Steel Products.....	1			C	C				C	A	C					C									
Pacific Machinery & Tool Steel Co.	1								C	A	D														
Pacific Metal Company.....	2								C				S			D	E	C							
Pacific Steel Warehouse Company.....	1			C	C				C		C		C			C	C								
Robertson Heavy Hardware Co.....	2			C	C				C		C					C									
Special Steels, Inc.....	3																								
Woodbury and Company.....	1			C	C				C	A	C		C			C				D					
Salem																									
Salem Steel & Supply Company.....	2			C	C				C	A						C									
UTAH																									
Ogden																									
George A. Lowe Company.....	3								C						C				C						
Ogden Iron Works Company.....	3			C					C						C	C									
Salt Lake City																									
The Galigher Company.....	2			C	C			C	C		C					C									
The Mine and Smelter Supply Co...	2			C	C		C	C	C		C		C			C				C					
Minneapolis Steel and Machinery, Division of Minneapolis-Moline Power Implement Company.....	3			C	C				C							C									

WAREHOUSE DISTRIBUTORS OF "SCHEDULE A" STEEL PRODUCTS

NAME AND LOCATION OF WAREHOUSE	APPROXIMATE INVENTORY OF "A" PRODUCTS	PRODUCTS CARRIED IN STOCK																								
		1	2	3	4	5	6	7	8	9	10	11a	12	13	14	15	16	17	18	19	20	21	22	23	24	25
<u>PACIFIC STATES (CONT.)</u>																										
<u>UTAH (CONT.)</u>																										
<u>Salt Lake City (Cont.)</u>																										
Salt Lake Hardware Company.....	1		C	C		C	C	C		C							C	C			C					
Structural Steel and Forge Co.... 545 West 7th South.....	2		C	C				C									C									
Zion's Cooperative Mercantile Institution.....	2		C	C			C	C		C							C	C	C							
<u>WASHINGTON</u>																										
<u>Bellingham</u>																										
Korse Hardware Company, Inc.....	2		C				C	C		C			C				C	C			C					
<u>Everett</u>																										
Agnew Hardware Company.....	3		C	C				C		C					C											
<u>Hoquiam</u>																										
F. G. Foster Company.....	2		C	C			C	C	A	C		C					C		C						C	
<u>Seattle</u>																										
Alaskan Cooper Works..... 902 First Avenue, South.	3																	S								
Allegheny Ludlum Steel Corporation.....	3								A												A					
Parde Steel Company..... 2709 Utah Avenue.....	1		C	C				C		C		C					C									
A. M. Castle and Company.....	1		C	C				C	A	C		C					C	E	C							
Columbia Steel Company.....	1		C	C				C		C		C					C	C	C							
Crucible Steel Company of America..... 2755 First Avenue, South	2							C	A	C											D					
Thomas A. Gaynor Company..... 2900 11th Avenue, S. W.	2		C	C			C			C							C									
C. M. Lovsted Company, Inc..... 2212 1st Avenue, South..	2					C	C	C																	C	
Northern Commercial Co., Inc.....	3		C						C	A							C				C					
Pacific Railway Supply Company... 2 Hanford Street.....	2					C	C																			
Peterson Wholesale Hardware.....	2		C	C				C		C					C		C									
Puget Sound Machinery Depot.....	3											C														
Sandvik Steel, Inc..... 2406 First Avenue South.	3																	C			C					
Schwabacher Hardware Company.....	2		C				C	C		C							C				C			C		
Seattle Hardware Company..... 501 First Ave., South...	1		C	C				C	A	C							C				C			C		
Seattle Steel Company..... 1200 Fourth Street.....	1		C	C				C	C	C		C	C				C	C	C		C			C		
Stack Steel & Supply Company..... 57 Stacy Street.....	2		C	C				C											C							
<u>Spokane</u>																										
Flanders Supply Company..... 806 North Madelia.....	3																C									
Jensen-Byrd Company.....	2							C						C			C				C					
Marshall-Wells Company.....	2		C	C				C		C							C	C			A					
<u>Tacoma</u>																										
Hunt and Mottet Company.....	2		C	C			C	C		C							C				C					
St. Paul and Tacoma Lumber Co.....	2			C			C	C		C					C						C					
Tacoma Steel & Equipment Co..... 2134 Commerce Street....	2		C	C				C									C									
<u>Wenatchee</u>																										
Wells and Wade, Inc.....	2		C	C				C				C					C									
<u>Yakima</u>																										
Yakima Hardware Company.....	3							C		C							C									



UTAH STATE AGRICULTURAL COLLEGE
LIBRARY