

U.S. Fish & Wildlife Service

Wolf Creek

*National Fish
Hatchery*



Over a century ago, it was recognized that conservation measures were necessary to maintain good fishing in our public waters. Fishing has always been one of America's leading forms of outdoor recreation. The primary responsibility of the Wolf Creek National Fish Hatchery is to raise rainbow trout which will help preserve this tradition for present as well as future generations of Americans.

Construction of a dam, regardless of its type, alters the entire environment within a river. The first and most obvious change takes place when the reservoir fills, but many changes may also take place below the dam. Some of them might be subtle, and others, like those in the Cumberland tailwaters, might be quite drastic.

Wolf Creek Dam produces a large, deep reservoir in which the water stratifies into temperature layers during the summer and fall months. The water released into the Cumberland River comes from a deep, cool layer. It caused a loss of the original warm water fish habitat and replaced in with the present cold tailwater.

Wolf Creek National Fish Hatchery
Wolf Creek National Fish Hatchery was constructed in 1975. This is one of the most recently constructed hatcheries in the federal hatchery system.



This station currently produces approximately 1,000,000 trout weighing 230,000 pounds. In cooperation with the Kentucky Department of Fish and Wildlife Resources, fish are stocked into 90 different public fishing waters in the state. No private waters are stocked. The majority of the fish are stocked in waters controlled by the federal government.

The hatchery's water supply comes from Lake Cumberland at a depth ranging from 25 to 100 feet below the water surface. The water temperatures will range from 40° to 65° depending on the time of year. The water gravity flows through the hatchery at rates up to 15,000 gallons per minute.





Fishing and Camping

Fishing is allowed in the creek below the hatchery. This creek is Handicap Accessible with a ramp at creek level. The creek is randomly stocked 3 to 4 times a week.

The Cumberland river provides good fishing for trout, walleye, sauger, and others depending on the distance from the dam.

Lake Cumberland provides good fishing and is well known for the striper fishing which has produced fish in excess of fifty pounds. Lake Cumberland provides an excellent recreational area as the lake is approximately 55,000 acres with many fingers where a person can have their own little section to themselves.

Camping is available at the Corps of Engineers, Kendall Park, 877/444 6777. The Lake Cumberland State Resort Park, 800/325 1709, is nearby. Lodging is available at three resort lodges and numerous motels in the area. Houseboats can be rented from different docks if you choose to sleep on the water. Visit the Lake Cumberland Website at www.cumberlandlake.com.

What Can You Do?

Visitors are welcome to tour the hatchery and to fish in the creek below the hatchery.

Hatchery Hours 7:00 a.m. to 3:30 p.m. daily.

Restrooms, drinking water, and parking areas are provided for public use. During your visit, please feel free to ask questions you may have concerning the hatchery.

Group Tours

Special group tours can be arranged with the Hatchery Manager. You are invited to return often.

For Additional Information Contact

Hatchery Manager
 Wolf Creek National Fish Hatchery
 50 Kendall Road
 Jamestown, KY 42629-6502
 Telephone: 270/343 3797
 Email: James_Gray@fws.gov



This is an ideal vacation spot for anyone that likes water sports. Lexington, Bowling Green, and Louisville are about 100 miles from Jamestown, KY which offer horse racing and many forms of entertainment.

1. Visitor Parking

2. Sheltered Exhibit

At the kiosk, read information pertaining to the National Fish Hatchery System, Wolf Creek National Fish Hatchery and the U.S. Fish & Wildlife Service. Located throughout the grounds you will find informational signs to help you understand the hatchery and it's operation.



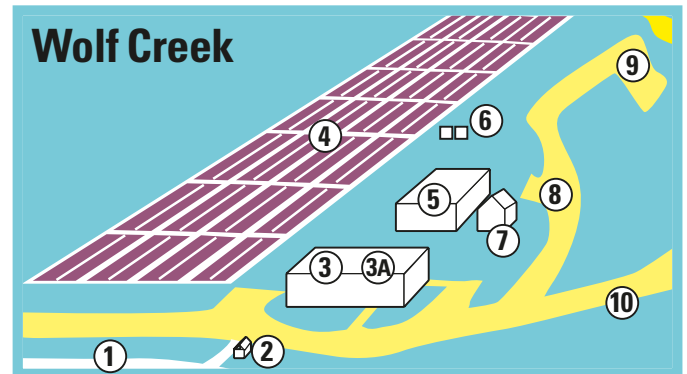
3. Incubator and Juvenile Fish Rearing Area

Spawning operations are not conducted at this station. However, Federal hatcheries in Tennessee, West Virginia, Wyoming, and Montana hold adult trout (broodstock) which are spawned artificially. After the eggs are taken and fertilized, they are held at the station until they develop to the eyed egg stage. Then the eggs are shipped via Federal Express to production hatcheries like Wolf Creek National Fish Hatchery to hatch.



This is the incubator and juvenile fish rearing area. When the station receives eggs, fall through winter months, they are disinfected to prevent spread of fish diseases. They are counted using volume metric displacement and then placed in the incubators to hatch.

Approximately 10 to 14 days after the eggs are placed in the incubators, they hatch. The fry are left in the incubator for another 14 days until their yolk sac is absorbed. The fry are then transferred to rearing tanks where they are fed specially formulated feed hourly. The young fry, when they reach approximately 2 inches, become teenage fish and are called fingerlings. When the fingerlings grow to 3 inches they are moved to the outside raceways where the larger fish are kept.



*Please
don't
harm
the fish.
Keep your
hands
out of the
water.*

The fish enjoy visitors and will swim to meet you but it is harmful to them if you catch them.

3A. Hatchery Office

4. Raceway Area

Fish are fed and cared for until they reach the desired stocking size. It takes approximately 18 months to develop from egg stage to a 9 inch fish.

Feeding activities range from twice a day for the larger fish to 5 to 6 times daily for the smaller sizes. As the fish grow, transferring of them from one raceway to another is a regular occurrence.

Throughout the year fish are harvested from the raceways and distributed by truck for stocking in over 90 different streams, lakes and tailwaters in Kentucky and North Carolina.

5. Garage and Maintenance Buildings

These are maintenance, garage and paint storage buildings where work activity involves the mechanical aspects of the hatchery's maintenance and operation. For safety reasons, this area is not open to the public.

6. Feed Bins

Fish food is stored here for easy transfer to the vehicles which are used for feeding fish in the raceways.

7. Restrooms

8. Road—Handicapped Only

9. Parking and Fishing Ramp Handicapped Only

10. Residences—Hatchery Personnel Only



U.S. Fish & Wildlife Service

The Wolf Creek National Fish Hatchery is one of more than 65 units in the National Fish Hatchery System administered by the U.S. Fish & Wildlife Service. The Service also manages over 514 national

wildlife refuges and major fish and wildlife research laboratories across the country. As the Nation's primary steward of fish and wildlife resources, the Service provides leadership in habitat and wetlands protection; fish and wildlife research and technical assistance; and in the conservation and protection of migratory

birds, anadromous fishes, certain marine mammals, and threatened and endangered species.

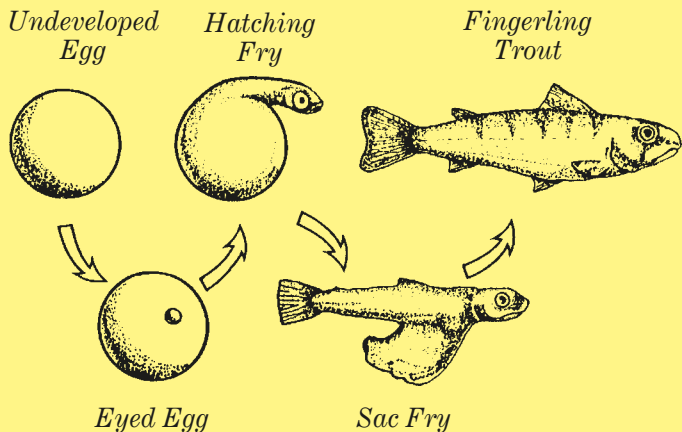
Wolf Creek National Fish Hatchery is one of 14 Federal hatcheries located in the southeast region. These hatcheries serve a vital role in the management of our fishery resources.

We have enjoyed having you visit the hatchery and invite you to return often. Your awareness of our resource and its needs is the basic foundation for support of healthy fish and wildlife populations.



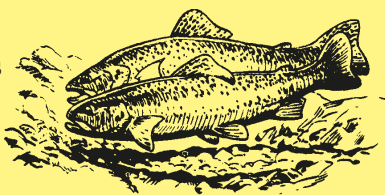
Life-Cycle of Rainbow Trout

Egg to Fingerling



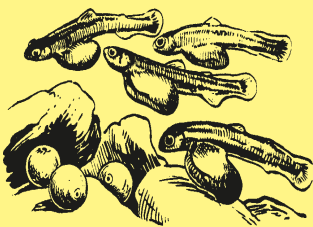
Natural Life

Trout eggs are deposited in prepared redds, or nests in the gravel of stream beds and hatch in 8 weeks or more. A young fish or fry lives for 3 to 4 weeks on food absorbed from the yolk sac.



About the time the yolk is completely absorbed, the fingerling emerges from the gravel and feeds on microscopic aquatic organisms.

From the many eggs deposited in the gravel, only a very few young fish are produced and survive to adulthood. Most of the eggs and young fish die from natural causes such as floods, silt, drought and predators. Under natural conditions, relatively few trout reach catchable size to be taken by fishermen.



Photos by USFWS

Threatened and Endangered Species

The Wolf Creek National Fish Hatchery is actively engaged in the recovery and restoration of many imperiled aquatic species. These activities are carried out through on station propagation of fish and mussel species, reintroductions, and field surveys. Today, almost every river and stream in the Southeast has been modified in some way. All of these and other forces have dramatically altered the Southeast's aquatic biodiversity and fishery resources. Although some changes affecting aquatic habitat, such as reservoirs, have contributed substantially to recreational fisheries, the Southeast's aquatic biodiversity is threatened,



and by some measures the Southeast's aquatic ecosystem health is poor and continues to decline.

Annual Catch A Rainbow Kids Fishing Derby

Held annually, the first Saturday in June. This event is free for children ages 1 to 15. Lots of prizes, trophies, food, and drinks for the participants. A great family event. For more information visit www.catcharainbow.org.



Future Visitor/Environmental Education Center

We are currently in the planning and design phase of a 8,700 sq. ft. office, visitor center, and environmental education complex. The new facility will greatly enhance our visitor and environmental education programs. Construction should be complete by mid-2005.



**Wolf Creek
National Fish Hatchery
50 Kendall Road
Jamestown, Kentucky 42629-6502
270/343 3797
Email: James_Gray@fws.gov
<http://wolfcreek.fws.gov>**

**U.S. Fish & Wildlife Service
1 800/344 WILD**

January 2004

