

Monthly Catalogue

United States

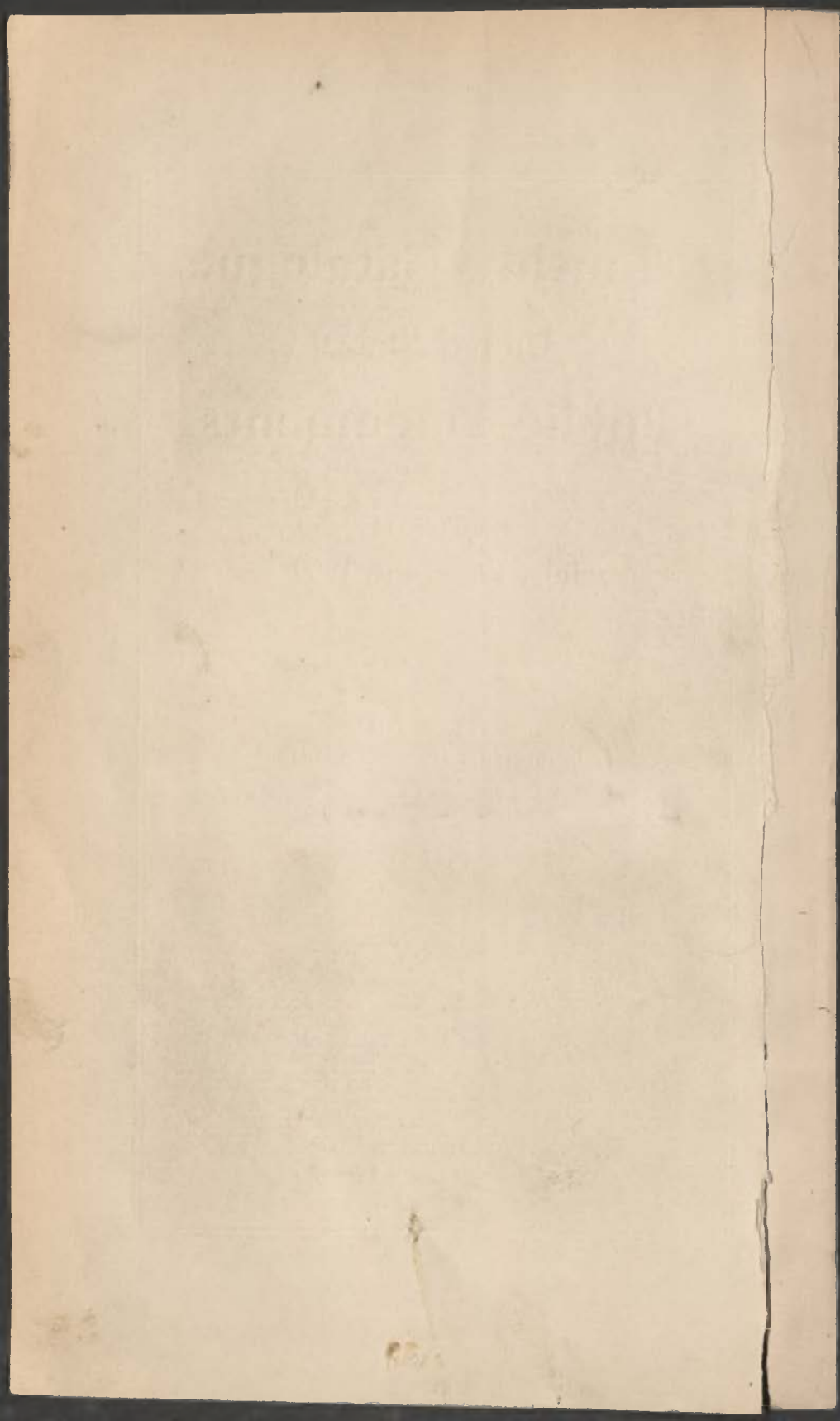
Public Documents

Nos. 163-174
July, 1908-June, 1909

ISSUED BY THE
SUPERINTENDENT OF DOCUMENTS



WASHINGTON
GOVERNMENT PRINTING OFFICE
1908-1909



Monthly Catalogue

United States

Public Documents

No. 163

July, 1908

ISSUED BY THE
SUPERINTENDENT OF DOCUMENTS



WASHINGTON
GOVERNMENT PRINTING OFFICE
1908

Abbreviations

Appendix	app.	No title-page	n. t. p.
Congress	Cong.	Number, numbers	no., nos.
Consular	cons.	Octavo	8°
Cover title only	c. t. o.	Page, pages	p.
Department	Dept.	Part, parts	pt., pts.
Diagram, diagrams	diagr.	Plate, plates	pl.
Document	doc.	Portrait, portraits	por.
Executive	ex.	Quarto	4°
Facsimile, facsimiles	facsim.	Report	rp.
Figure, figures	fig.	Saint	St.
Folio	fo.	Section, sections	sec.
House	H.	Senate	S.
House concurrent resolution	H. C. R.	Senate concurrent resolution	S. C. R.
House document	H. doc.	Senate document	S. doc.
House executive document	H. ex. doc.	Senate executive document	S. ex. doc.
House joint resolution	H. J. R.	Senate joint resolution	S. J. R.
House report	H. rp.	Senate report	S. rp.
House resolution (simple)	H. R.	Senate resolution (simple)	S. R.
Illustration, illustrations	il.	Session	sess.
Inch, inches	in.	Sixteenmo	16°
Including	incl.	Statutes at large	Stat. L.
Latitude	lat.	Table, tables	tab.
Leaf, leaves	l.	Thirtytwo-mo	32°
Longitude	long.	Treasury	Treas.
Mile, miles	m.	Twelvemo	12°
Miscellaneous	misc.	Twentyfour-mo	24°
Nautical	naut.	Versus	vs., v.
No date	n. d.	Volume, volumes	v., vol.
No place	n. p.	Year	yr.

Common abbreviations for names of States and months are also used.

H. or S. followed by a number stands for House bill or Senate bill, respectively.

* Document for sale by Superintendent of Documents.

† Distribution by office issuing document.

‡ Document not obtainable.

Explanation

Words and figures inclosed in brackets [] are given for information, but do not appear on the title-pages of the publications catalogued. When size is not given, octavo is to be understood. Size of maps is measured from outer edge of border, excluding margin. The dates, including day, month, and year, given with Senate and House documents and reports, are the dates on which they were ordered to be printed. Usually the printing promptly follows the ordering, but various causes sometimes make delays. When Congress and session are not given with the numbers of Senate and House documents and reports, 60th Congress, 1st session, is to be understood.

701213

PUBLIC LIBRARY,

NOV 21 1918

DETROIT, MICH.

R015.73 45mc

July 1908 - June
1909

NOTES OF GENERAL INTEREST

With this number of the Monthly catalogue we revert to the original form, that of entering the publications by their Governmental authors, and supplementing this classed arrangement by an index, which will be made cumulative as formerly.

The return to the old and preferred form has become necessary on account of the law of March 1, 1907, which authorizes the shipment of the unbound Congressional documents and reports to the designated depository libraries. Some list of these Congressional publications must necessarily be furnished, and the form of entry herein adopted provides the most satisfactory basis for listing these publications.

The imperative demand for a working list of these pamphlet issues has operated in lieu of specific legislation, and by a more liberal interpretation of the present provisions the issue in this form is again made possible.

Besides this, the Monthly catalogue will be made complete, and will include entries for all Government publications published during the month, except those of a confidential or strictly official nature, and an additional symbol (§) will be used to designate those publications which are not available, instead of omitting mention of them as has been the practice for the past year. It will be necessary for those using the catalogue to familiarize themselves with these signs in order to obtain the best results.

An additional improvement, suggested by numerous librarians, is the inclusion of the note "Not sent to designated depository libraries." This will provide a means by which the librarians of these institutions may know definitely which publications are not to be sent them free under the general provisions of law. It may be stated, however, that the publications in this class are not numerous, embracing only such as the publishing offices decide are not "made for distribution." When not confidential, these publications may be obtained by purchase from this Office, at the price stated in the Monthly catalogue.

The volume of work at present going through the Government Printing Office is very large. This issue of the Monthly catalogue shows that Departmental publications for the month of July have been unusually numerous, and their variety and interest are equally noticeable.

The Forest Service gives to a large and interested public a 5th edition and 3d revision of "The Use book," which contains in its 341

pages all the regulations and instructions for the use of the national forests. The title of this numerous-printed manual emphasizes the Government's forest policy, which, in the briefest terms, is: Preservation by rational use. The creation of national forests does not mean, though many have thought it did, that the forests have become dead property, no longer contributing to the nation's wealth. It means, on the contrary, that the woodlands are being farmed, as other lands are, and, while preserved from waste and destruction, are being put in a way to contribute more than ever before to the national wealth.

Horticulturists and pomologists will derive substantial benefit from Plant Industry Bureau Bulletin 126, a volume of 268 pages, all filled with the Nomenclature of the pear. It is a catalogue-index of the known varieties which have been mentioned in American publications during the 103 years, 1804-1907. The dates show of themselves that it is a work of great research, and it is quite as evident that only an expert, exceedingly familiar with the literature of his subject, could make such an extensive compilation on the nomenclature of a single fruit. In this case the expert is Mr. W. H. Ragan.

In Chemistry Bureau Circular 37, of which a reprint was issued July 6, Doctor Wiley gives the general results of his investigations upon the effects of sulphurous acid and sulphites upon digestion and health. He thinks the results of the inquiries as to the sulphurous preservatives are even more important than those relating to the boron compounds and salicylic acid and its salts. He is distinctly of the opinion that the administration of sulphurous acid in food produces serious injury to digestion and health. He also issues Part 4 of his Bulletin 84, in which he considers the influence of benzoic acid and benzoates and condemns their use as preservatives of food.

In Bulletin 344 the Geological Survey gives the results of extensive tests of concrete beams. As we have fairly entered upon the cement age, builders and contractors can not have too much sound information concerning the various forms in which concrete is used.

In an interesting circular, the Civil Service Commission gives full explanations concerning "veteran preference." Just what preference is given to former soldiers and sailors, the law upon which it is based, and the regulations under which the law is administered in examinations for the civil service and appointments thereto, are matters of more than passing moment, for the precedents now established may be followed for generations.

A Memorandum on hours of service law, by Luther M. Walter, attorney for the Interstate Commerce Commission, in which the objections that have been raised to the validity of the law are considered, is of importance to railroads and other common carriers.

Two very important treaties with Great Britain were proclaimed July 1, 1908. They relate to subjects which have been causes of dispute ever since the American eagle ceased to be a British subject and became an American citizen. They are the Canadian boundary

and the fisheries—this time, however, not the Newfoundland fisheries, but those of lakes, rivers, and certain specified limited parts of the Atlantic and Pacific coasts. While the treaties are important, they are not final. They provide for the appointment of a series of commissions, through whose efforts it is hoped final settlement may come.

In a 3-page fascicule the Smithsonian Institution gives an idea of the character and purpose of the International catalogue of scientific literature, its methods of publication, and its cost. Seventeen volumes a year are issued. The United States is a party to the international arrangement on the subject and the Smithsonian is the "Regional Bureau" through which its share of the work is done.

Instructions for the guidance of postmasters and carriers in the conduct of the rural delivery service, promulgated by authority of the Postmaster-General, is the title of a pamphlet which relates to one of the biggest things in the country and one of the most rapidly growing. Although the rural mail delivery is hardly ten years old, it already costs nearly 40 millions a year, and serves approximately 25 million people.

The Interstate Commerce Commission, under its increased legal powers, is active in gathering information concerning the great transportation interests and giving it to the public. Publications for the month include Bulletin 2, entitled Conference rulings; Accident bulletin 27, giving the record of accidents for the first quarter of the current year; the first issue of Classification of operating revenues as prescribed by the Commission and two other new classifications; also three supplements to similar issues; Regulations for the transportation of explosives; Digest of proceedings in 59th Congress, 1st session, relating to regulation of railroad rates, and several others.

Index-catalogue of medical and veterinary zoology is the title of Bulletin 37, Hygienic Laboratory. It is the beginning of a subject list, of which the author list is Bulletin 39, Animal Industry Bureau, in many parts. The card catalogues from which these printed index-catalogues are drawn are arranged in three sections: Authors, Subjects, and Hosts. Any library worker knows what author catalogues and subject catalogues are, but how many of them ever made a host catalogue?

The Copyright Office issues a new print of its Bulletin 1, showing the copyright law as in force July 15, 1908. There have been no copyright enactments since 1905, but there have been several treaties extending reciprocal copyright arrangements to other countries.

The July Monthly consular and trade reports contains the usual world-wide budget of commercial information, far too varied and voluminous to be summarized here.

All who are interested in colonial administration should read the Seventh annual report of the Philippine Bureau of Civil Service, now separately published in this country.

The new parcels post convention between this country and Italy is now published.

A new edition of the Circular relating to the enlistment of men for the Navy gives black-type emphasis to the fact that Congress has increased the pay of enlisted men and petty officers 10 per cent.

Geological Survey Bulletin 345, Mineral resources of Alaska, is being republished in sections for economy and convenience. Section C relates to Copper River region and Prince William Sound; D to Yukon Basin; E to Seward Peninsula, and so on.

Parts 2 and 3 of Report of the commissioner of corporations on cotton exchanges are issued together in a thick pamphlet. Part 2 is entitled Classification of cotton and part 3 is Range of grades deliverable on contract.

Bulletin 64, Statistics Bureau, Agriculture Department, has the title Number and farm value of farm animals in the United States, 1867-1907. This is one of the series of 40-year statistical reviews of farm products and values which the Statistics Bureau for some time has been publishing. The total value of farm stock in 1867 was less than 1,000 millions. In 1907 it was more than 4,000 millions. The detailed tables are presented by States and also by years.

Animal Industry Bureau issues parts 20 and 21 of its Bulletin 39, which is the extensive Index-catalogue of medical and veterinary zoology. It is an alphabetical author list of the literature of this subject, and the present issues carry it to Ozzard, A. T., or not much more than half way through the alphabet.

The Crop reporter for July reports crop conditions as of July 1. The outlook is generally favorable.

That it may receive statistical returns from the custom-houses in convenient form for use in its publications, the Commerce and Labor Department issues schedules of classification for the use of the customs officers. New editions issued in July are Schedule A and Schedule B, classification of commodities; Schedule C, classification of foreign countries and dependencies; Schedule E, classification of merchandise.

A time and work saver is a 318-page book of Geographic tables and formulas from the Geological Survey.

Occasional papers 29 of the Engineer School, U. S. A., is on Riparian rights [in the] navigable waters in the United States.

The Isthmian Canal Commission issues a Manual of information concerning employments for service on the Isthmus of Panama.

Treaties for arbitration with Mexico and Norway, for extradition with Uruguay, and for conveyance of prisoners, wrecking, and salvage with Great Britain, have been proclaimed and published.

These are but a few samples from the voluminous and varied list of Government publications for the month of July, every one of which has had its own large or small public waiting for it.

A NEW PERIODICAL

The Navy Department has begun a new monthly periodical, called Navy and Marine Corps list and directory, published by the Naviga-

tion Bureau. The first number bears date July 1, 1908, and shows the station at that date of every officer of Navy and Marines. Each ensuing monthly number will give the same information corrected up to the date of publication. Previously the Department has issued the Navy register Jan. 1st and the List and station July 1st, giving the corrected information twice a year. In these days of the Navy's activity, a twice-a-year directory was found to be inadequate. Hence the change to a monthly publication, equivalent to the Army directory, which has been published monthly since 1891. The Superintendent of Documents has a large list of yearly subscribers for the Army directory, and no doubt soon will have for the Navy and Marine Corps list and directory. Its price has been fixed at 10 cents for a single copy and \$1 for a yearly subscription, mailed free of postage. The annual Navy register will be continued as heretofore.

POSTAL GUIDES

That indispensable manual, the United States Official postal guide, has undergone a change. The July number will hereafter be the annual issue instead of the January number as heretofore. The issue for each month except July will be a small pamphlet of additions and corrections similar to those heretofore issued. The issue for the present month begins the Third series as vol. 1, no. 1. The First series began in 1874 and consists of 20 quarterly numbers. The Second series began in 1879 in the form which has grown so familiar by nearly 30 years of useful service. The new form has a broader page than the old, and a closer type, enabling the lists to be handled more conveniently. Of these broad pages it fills more than 700, all very closely packed. It is a businesslike publication, full of information but making no brags.

In this it differs somewhat from the Table of post offices in the United States, issued 1822 (the earliest postal guide in the Public Documents Library), which looks diminutive in comparison, but boasts quite freely of its mails, transported in stages 10,121 miles, and in sulkies and on horseback 10,616 miles more, making 20,737 miles a day. This was doing very well, but at present the rural free delivery alone discounts it many times over, while the railroad, steamboat, and trolley services add about 525,000,000 miles a year to the total. In 1822, as Postmaster-General Return Jonathan Meigs, jr., exultingly tells us, the mail was transported from Anson, Me., to Nashville, Tenn., 1,448 miles (spelled out in italics), by direct lines of stages. Also from St. Marys, Ga., to Highgate, Vt., 1,369 miles. He fails to tell us the time it took to make these long trips. Though the date of publication of his book is 1822, he adds: "These remarks apply to March, 1817."

The postal statistics of that day exceed ours in but one point: The rates of postage. In 1822 envelopes had not been invented and it cost to mail a "single letter, composed of one piece of paper," any distance not exceeding 30 miles, 6 cents; 80 miles, 10 cents; 150 miles, 12½ cents; 400 miles, 18½ cents; over 400 miles, 25 cents. For two pieces of paper, double rate; for three pieces, triple rate; for four pieces, quadruple rate.

PUBLICATION OF DIPLOMATIC CORRESPONDENCE

March 27, 1818, Congress ordered the publication, under direction of the President, of sundry historical documents, among them "the foreign correspondence of the Congress of the United States, from the first meeting thereof down to the date of the ratification of the definitive treaty of peace between Great Britain and the United States in the year 1783," except such parts as the President might choose to withhold. The work of editing was intrusted to Jared Sparks, and he brought out, from the press of N. Hale, Boston, 1829-30, "The Diplomatic correspondence of the American Revolution," in twelve volumes. The edition ordered by Congress was 1,000 sets. John C. Rives printed in Washington, 1857, an edition in six volumes, of which 500 sets were taken by the State Department. May 5, 1832, Congress appropriated \$12,000 "to enable the Secretary of State to cause to be printed, under his direction, a selection from the diplomatic correspondence of the United States, between the peace of 1783 and the 4th of Mar. 1789, remaining unpublished in the Department of State." Under this authority appeared, Washington, printed by Francis Preston Blair, 1833-34, in seven volumes, "The Diplomatic correspondence of the United States of America, from the signing of the definitive treaty of peace, 10th Sept. 1783, to the adoption of the Constitution, Mar. 4, 1789." This title can not be accepted as accurate, for though the Government created under the Constitution went into operation Mar. 4, 1789 (or would have done so if a Congressional quorum had assembled promptly), that is not the date of the adoption of the Constitution. A second edition of the Diplomatic correspondence, 1783-1789, was published in Washington, 1837, by Blair & Rives, and this was reprinted, 1855, in three volumes, by John C. Rives. Neither of these collections is found in the numbered series of Congressional documents. A new collection, edited by Francis Wharton, covering the same period that had been covered by Sparks, and entitled "The Revolutionary diplomatic correspondence of the United States," was issued by the Government Printing Office, 1889, in six volumes. Wharton restores the integrity of the text, with which Sparks had taken undue liberties, and adds much new matter. Wharton's collection is a numbered Congressional document of the 50th Congress, 1st session. Of this collection 7,000 sets were printed besides the "usual number" (1,900).

Prior to 1861 there was no annual publication of the general diplomatic correspondence which is carried on by and through the State Department. It was the custom of Congress from time to time to call for the correspondence on those subjects as to which it desired information. The material supplied in response to such calls was published in the Congressional document numbered series at irregular intervals. Among the documents accompanying the President's annual messages prior to 1861 are occasionally found diplomatic dispatches relating to special subjects which he desired to bring to the attention of Congress. In 1861 Secretary Seward submitted a volume of 439 pages made up of the general diplomatic

correspondence of the year and entitled "Papers relating to foreign affairs." A similar volume has been sent to Congress each year since, with the single exception of 1869, when Secretary Fish sent only 16 pages of correspondence, all relating to a concession by the French Government for a submarine cable. In 1870 the title was changed to "Papers relating to the foreign relations of the United States," which has since been retained.

The Secretary of State is the only Cabinet officer who does not make an annual report. There is one exception to this rule, Secretary Olney having made in 1896 the only annual report of the State Department.

Hon. John W. Foster, a former Secretary of State, gives warning, in his "A Century of American diplomacy," that investigators may not depend on published documents for a full knowledge of the country's foreign relations, as the State Department exercises a large discretion in withholding dispatches from publication.

The annual volumes of Foreign relations, 1861 to date, are all numbered Congressional documents.

BANCROFT VERSUS RUSSELL

George Bancroft, the American historian, by invitation of Congress delivered a memorial eulogy on Abraham Lincoln in the Capitol, Feb. 12, 1866.

In the course of his address, referring to the breaking out of the war between the States, he said this: "The British Secretary of State for Foreign Affairs made haste to send word through the palaces of Europe that the great Republic was in its agony; that the Republic was no more; that a headstone was all that remained due by the law of nations to 'the late Union'".

Earl Russell, better known to fame as Lord John Russell, was the British Secretary of State for Foreign Affairs at the time, and, resenting Mr. Bancroft's statement, he wrote to Charles Francis Adams, American Minister to Great Britain, a letter (Feb. 28, 1866) in which he said: "As words pronounced on such an occasion and by so eminent a man as Mr. Bancroft may have an effect far beyond the injury which my personal character might suffer, I must request you to convey to Mr. Bancroft my denial of the truth of his allegations."

This letter was duly conveyed to Mr. Bancroft, and with an effect which could hardly have been anticipated by the British statesman. So far from withdrawing or repudiating his "allegations", Mr. Bancroft proceeded to prove them, and did so with a vigor and conclusiveness of course entirely courteous but none the less convincing.

The interesting correspondence, with some supplementary matter, is published in full as House mis. doc. 110, 39th Cong. 1st sess.; serial 1271.

Mr. Bancroft was born in 1800 and lived till 1891. He was Minister to England and to Germany, Secretary of the Navy, and founder of the Naval Academy. His history of the United States, in 12

volumes, covers the period from the discovery of the country to the inauguration of Washington as the first President. During his last years, which were spent in Washington, he became noted as a grower of roses.

NOTABLE REPORTS AND ADDRESSES

A list, continued from the June Monthly catalogue, of a few of the notable reports and addresses that have been made to Congress, showing where they may be found in the "sheep set":

Faris, William.

Claim of invention of sidewheels for steamboats and use of wallower. 1818. 15th Cong. 1st sess., S. doc. 55.

Farragut, David Glasgow.

Official reports of battle of New Orleans. 1862. 37th Cong. 2d sess., S. ex. doc. 56.

Featherstonhaugh, George William.

Geological report on elevated country between Missouri and Red rivers. 1825. 23d Cong. 2d sess., H. doc. 151.

Fergusson, Arthur Walsh.

Handbook of Mexico. 1891. 52d Cong. 1st sess., S. ex. doc. 8.

Field, Cyrus West.

Memorial relative to telegraph between America and Asia. 1870. 41st Cong. 2d sess., H. mis. doc. 126.

Fillmore, Millard.

Remarks on powers and duty of Vice-President in preserving order in Senate. 1850. 31st Cong. 1st sess., S. mis. doc. 79.

Finley, John P.

Certain climatic features of the two Dakotas. 1893. 52d Cong. 1st sess., S. ex. doc. 157.

Fisk, James L.

Report of expedition from St. Cloud to Rocky Mountains. 1863. 38th Cong. 1st sess., H. ex. doc. 45.

Fletcher, Alice Cunningham.

Indian education and civilization. 1888. 48th Cong. 2d sess., S. ex. doc. 95.

Fletcher, Robert.

Prehistoric trephining and cranial amulets. 1882. 47th Cong. 1st sess., H. mis. doc. 66.

Fontaine, Edward.

Contributions to science of hydraulic engineering. 1879. 45th Cong. 3d sess., S. ex. docs. v. 2, an unnumbered publication following document 16.

Fontaine, William Morris.

Potomac or Younger Mesozoic flora. 1889. 50th Cong. 2d sess., H. mis. doc. 147.

Foote, Andrew Hull.

Message of President Lincoln recommending vote of thanks to Foote. 1862. 37th Cong. 2d sess., H. ex. doc. 141.

Foote, Henry Stuart.

Altercation with Thomas Hart Benton, in Senate chamber. Apr. 17, 1850. 31st Cong. 1st sess., S. rp. 170.

Forbes, Francis.

Report on trade-marks. 1890. 51st Cong. 1st sess., S. ex. doc. 57.

Ford, Worthington Chauncey.

Wool and manufactures of wool. 1894. 52d Cong. 2d sess., H. mis. doc. 94.

Forsyth, John.

Report on privileges and restrictions of foreign commerce. 1839.
26th Cong. 1st sess., S. doc. 80.

Foster, John M.

Light-house service and system for lighting harbors. 1882. 47th
Cong. 1st sess., S. ex. doc. 135.

Franklin, Benjamin.

Correspondence relative to sale of his manuscripts and books to
United States, with catalogue. 1881. 47th Cong. 1st sess.,
S. mis. doc. 21.

Proceedings in Congress on occasion of presentation of his staff
to United States. 1843. 27th Cong. 3d sess., H. doc. 144.

Frelinghuysen, Frederick Theodore.

Extraterritoriality defined. 1882. 47th Cong. 1st sess., S. mis.
doc. 89.

Fremont, John Charles.

Report of exploring expedition to Rocky Mountains. 1843. 27th
Cong. 3d sess., S. doc. 243.

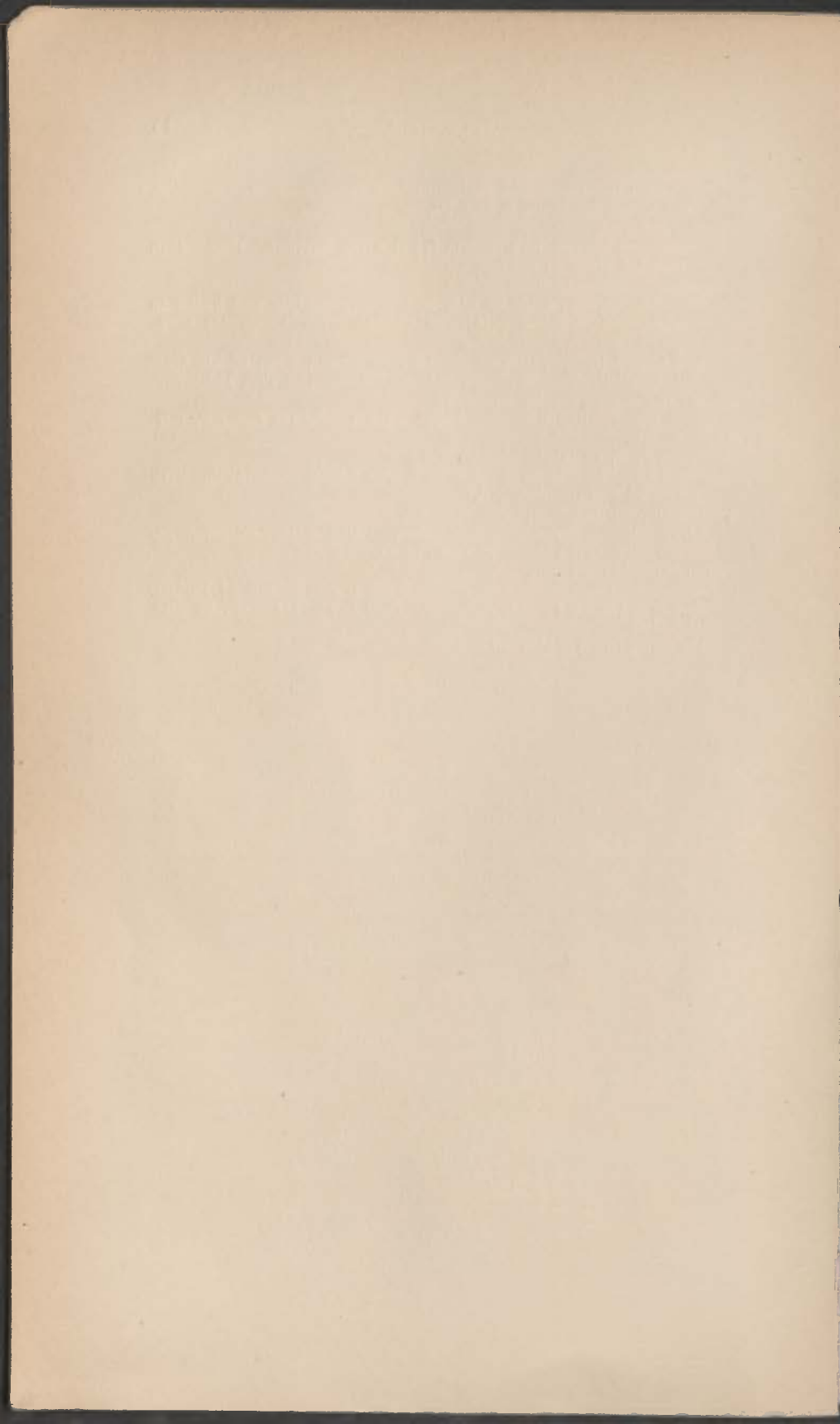
Fromentin, Elijius.

Correspondence concerning misunderstanding with Andrew Jack-
son. 1822. 17th Cong. 2d sess., H. doc. 42.

Fuller, Melville Weston.

Address in commemoration of the first inauguration of George
Washington as President. 1889. 51st Cong. 1st sess., H. mis.
doc. 168.

This list will be continued.



MONTHLY CATALOGUE

No. 163

JULY

1908

AGRICULTURE DEPARTMENT

NOTE.—Those publications of the Department of Agriculture which are for sale will be supplied by the Superintendent of Documents, Washington, D. C. The Department issues a monthly list of publications, which is mailed to all applicants, enabling them to select such reports and bulletins as interest them.

Twenty-eight hour law, June 29, 1906 [text of law]. July 13, 1908.
7 l. ‡

ANIMAL INDUSTRY BUREAU

Analysis of coal-tar creosote and cresylic acid sheep dips; by Robert M. Chapin. July 17, 1908. 35 p. 1 il. (Bulletin 107.)
* Paper, 10c. Agr 8—653/4

Index-catalogue of medical and veterinary zoology, pt. 20, authors, N- Nyström; by Ch. Wardell Stiles and Albert Hassall. June 30, 1908. ii+1493-1574 p. (Bulletin 39 [pt. 20].) * Paper, 15c.

Same, pt. 21, authors, O-Ozzard; by Ch. Wardell Stiles and Albert Hassall. July 8, 1908. ii+1575-1624 p. (Bulletin 39 [pt. 21].)
* Paper, 10c.

Report and recommendations [of Committee on Veterinary Education] regarding veterinary colleges in United States. July 6, 1908. n. t. p. 13 p. (Circular 133.) * Paper, 5c. Agr 8—672

Service announcements 15; July 15, 1908. 1908. n. t. p. p. 71-78.
[Monthly.] ‡

BIOLOGICAL SURVEY BUREAU

Deer farming in United States; by D. E. Lantz. July 29, 1908. 20 p. 2 il. (Agriculture Dept. Farmers' bulletin 330.) * Paper, 5c.
Agr 8—655/2

CHEMISTRY BUREAU

General results of investigation showing effect of benzoic acid and benzoates upon digestion and health; [by H. W. Wiley]. July 20, 1908. n. t. p. 15 p. 2 il. (Circular 39.) * Paper, 5c.
Agr 8—654/4

General results of investigations showing effect of sulphurous acid and sulphites upon digestion and health. Nov. 22, 1907 [reprint July 6, 1908]. n. t. p. 18 p. 1 il. (Circular 37.) * Paper, 5c.
Agr 8—654/4

Influence of food preservatives and artificial colors on digestion and health: 4, Benzoic acid and benzoates; by H. W. Wiley, with W. D. Bigelow, F. C. Weber, and others. July 20, 1908. vi + 1043-1294 p. 2 il. (Bulletin 84, pt. 4.) * Paper, 25c.

Agr 6—1828/10

Official and provisional methods of analysis, Association of Official Agricultural Chemists; edited by Harvey W. Wiley. 1908. xxi + 272 p. [13] il. (Bulletin 107 revised.) * Paper, 20c.

Agr 7—2096/3

ENTOMOLOGY BUREAU

Cabbage hair-worm; by F. H. Chittenden. July 28, 1908. n. t. p. 6 p. 1 il. (Circular 62, revised edition.) * Paper, 5c.

Agr 6—1169/2

Cockroaches, by C. L. Marlatt; revised reprint from Bulletin 4, new series, Division of Entomology. [June 23, 1908.] n. t. p. 14 p. 5 il. (Circular 51 revised.) * Paper, 5c.

Common squash bug (*Anasa tristis* DeG.); by F. H. Chittenden. July 28, 1908. n. t. p. 5 p. 3 il. (Circular 39, 2d revise.)

* Paper, 5c.

Miscellaneous papers on apiculture: Bee diseases in Massachusetts; by Burton N. Gates. June 30, 1908. ii + 23-32 p. 1 pl. (map). (Bulletin 75, pt. 3.) * Paper, 5c.

Agr 8—669/3

Preliminary information on management of storm-felled pine timber to prevent damage by wood-boring insects, in States south of North Carolina, Tennessee, Missouri, and Kansas; [by A. D. Hopkins]. [June 18, 1908.] [2] p. 4° †

Requirements to be complied with by nurserymen or others who make interstate shipments of nursery stock; by A. F. Burgess. July 24, 1908. n. t. p. 7 p. (Circular 75, revised edition.)

* Paper, 5c.

Agr 6—1409/2

EXPERIMENT STATIONS OFFICE

Course in cereal foods and their preparation, for movable schools of agriculture [with list of references]; by Margaret J. Mitchell. July 27, 1908. 78 p. (Bulletin 200.) * Paper, 10c.

Agr 8—656/3

Experiment station record, v. 19, no. 10; June, 1908. 1908. c. t. o. ix + 901-1000 p. * Paper, \$1.50 a vol. (12 nos. and index).

NOTE.—Mainly made up of abstracts of reports and publications on agricultural science which have recently appeared in all countries, especially the United States.

List of station publications received by Office during June, 1908. July 13, 1908. n. t. p. 6 p. ([Publication] 1102.) [Monthly.] †

ALASKA AGRICULTURAL EXPERIMENT STATIONS

Dairy practice at Kenai station; by P. H. Ross. 1908. [1] + 62-73 p. 3 il. ([Experiment Stations Office. Publication] 1099.) [From Annual report, 1907.] * Paper, 5c.

HAWAII AGRICULTURAL EXPERIMENT STATION

Ceara rubber tree in Hawaii; by Jared G. Smith and Q. Q. Bradford. July 3, 1908. 30 p. 4 pl. (Bulletin 16; Experiment Stations Office. [publication] 1055.) * Paper, 10c. Agr 8—871

FOOD AND DRUG INSPECTION BOARD

Notice of judgment 1-3, food and drugs act. May 2-July 1, 1908. †

FOREST SERVICE

Classified list of publications available for distribution July 15, 1908.
[1908.] n. t. p. 4 p. narrow 12° †

Field program [and Service notes], July, 1908. July 1, 1908. n. t. p.
23 p. 2 il. †

Location, date of latest proclamation, and area of national forests
in United States, Alaska, and Porto Rico. July 1, 1908. July 23,
1908. n. t. p. 4 p. †

Use book, regulations and instructions for use of national forests.
[3d revised] edition. 1908. 341 p. 1 il. 16° [Administrative
edition.] * Paper, 25c. Agr 6-1152/2

PLANT INDUSTRY BUREAU

Bulletins of Bureau. July 1, 1908. n. t. p. 4 p. †

Familiar talks on farming: Diversification: [by S. A. Knapp].
June 30, 1908. n. t. p. 4 p. ([Publication] 383.) †

Nectaries of cotton; by Frederick J. Tyler. July 6, 1908. iv + 45-54
p. 1 pl. (Bulletin 131, pt. 5.) *Paper, 5c.

Nomenclature of pear, catalogue-index of known varieties referred
to in American publications from 1804 to 1907 [with bibliog-
raphy]; by W. H. Ragan. June 30, 1908. 268 p. (Bulletin 126.)
*Paper, 30c. Agr 8-665

PUBLICATIONS DIVISION

Monthly list of publications [of Agriculture Department], June,
1908. June 30, 1908. n. t. p. 4 p. ([Publication] 608.) †

Same [for foreign distribution], May, 1908. May 31, 1908. n. t. p.
3 p. ([Publication] 607.) †

Publications [of Agriculture Department] for free distribution.
1908. n. t. p. 74 p. (Circular 2, revised to June 10, 1908.) †

SOILS BUREAU

Soil survey of Morton area, N. Dak.; by Thomas D. Rice, assisted
by Ray Babcock and John T. Weaver. July 23, 1908. 26 p. 1 il.
map. [From Field operations, 1907. Prepared in cooperation
with Agricultural and Economic Geological Survey of North
Dakota.] †

SOLICITOR OF DEPARTMENT OF AGRICULTURE

Twenty-eight hour law [opinion of Judge Dietrich of circuit court,
9th circuit, for district of Idaho, central division, sustaining
demurrer in case involving violations of act of June 29, 1906,
relating to confinement of live stock in cars]. July 6, 1908.
n. t. p. 7 p. (Circular 6.) *Paper, 5c.

STATISTICS BUREAU

Crop reporter, v. 10, no. 7; July, 1908. July 18, 1908. n. t. p.
p. 49-56, 4° [Monthly.] * Paper, 5c. single copy, 50c. a yr.

Number and farm value of farm animals in United States, 1867-
1907. July 6, 1908. 145 p. (Bulletin 64.) *Paper, 15c.

Agr 6-1259/3

WEATHER BUREAU

NOTE.—The sale of these publications, heretofore carried on by the Chief of the Weather Bureau, was turned over to the Superintendent of Documents May 1, 1907. In future all remittances for Weather Bureau publications should be sent direct to the Superintendent of Documents.

National weekly weather bulletin, July 6-27, 1908; nos. 16-19 [1908]. July 7-28, 1908. 24 × 19 in. [Weekly, Apr.-Sept., monthly remainder of year.] *Paper, 25c. a yr.

Weather map, July 1-31, 1908. [1908.] 19 × 24 in. [Daily.] *Edition issued at Washington, D. C., 25c. a month, \$2.50 a yr.; editions issued at 100 stations throughout United States, 20c. a month, \$2.00 a yr.

AMERICAN REPUBLICS BUREAU

NOTE.—This Bureau sells its own monthly bulletins, handbooks, etc., at prices usually ranging from 5c. to \$1.00. Address the Director of the Bureau.

Bulletin [v. 27, no. 1], English section; July, 1908. [1908.] v + 1-230 + [1] p. 20 [89] il. 1 por. [Monthly.] †Paper, 25c. single copy, \$2.00 a yr.; with foreign section, 40c. single copy, \$3.00 a yr.

Same, secciones española, portuguesa, francesa; Julio, 1908. [1908.] vii + 1-373 + [1] p. 20 [99] il. 1 por. [Monthly.] †Paper, 25c. single copy, \$2.00 a yr.; with English section, 40c. single copy, \$3.00 a yr.

NOTE.—Beginning with the July issue, v. 27, no. 1, the Bulletin will hereafter be published in two sections; one in English and one having Spanish, Portuguese, and French subdivisions. Heretofore the Bulletin has given nearly one-half of its space under the same covers to duplications in Spanish, Portuguese, and French of what appeared elsewhere in English. The foreign section carries a Spanish cover and title-page. This number of the Bulletin is the annual review number.

CIVIL SERVICE COMMISSION

NOTE.—The Commission furnishes its publications gratuitously to those who apply for them.

Appointments. Information concerning temporary appointments. 1908. n. t. p. 11 p. †

Chef, male [Government Hospital for Insane, announcement of examination] Aug. 12, 1908. July 7, 1908. 1 p. 4° †

Chemist, Ordnance Department [announcement of examination] Aug. 19, 20, 1908. July 7, 1908. [2] p. 4° †

Civil service. Civil service act, rules, and Executive orders. Edition of June, 1908. 1908. 94 p. † 8-35552

— Civil service examinations to be held in fall of 1908. July, 1908. 1 p. 4° †

— Instructions to applicants, 4th civil service district, headquarters, Washington, D. C. June, 1908. n. t. p. 14 p. †

— Instructions to applicants, 8th civil service district, headquarters, St. Paul, Minn. June, 1908. n. t. p. 15 p. †

— Manual of examinations; revised to July 1, 1908. 1908. 82 p. † 7-35308/2

— Miscellaneous information. Revised June, 1908. 1908. n. t. p. 7 p. †

Clinical director, Government Hospital for Insane [announcement of examination] Aug. 26, 1908. July 21, 1908. 1 p. 4° † 52694

- Engineers.** Chief engineer, class 3, Coast and Geodetic Survey [announcement of examination] Aug. 3, 1908. July 1, 1908. 1 p. 4° †
- Civil engineer and superintendent of construction [announcement of examination] Sept. 9, 10, 1908. July 21, 1908. [2] p. 4° †
- Engineer in wood preservation, male [Forest Service, announcement of examination] Sept 2, 1908. July 6, 1908. [2] p. 4° †
- Inspector of mechanical and electrical engineering [announcement of examination] Sept. 2, 3, 1908. July 17, 1908. [2] p. 4° †
- Second-class (or assistant) steam engineer, custodian service [announcement of examination] Aug. 26, 1908. July 17, 1908. [2] p. 4° †
- Interstate Commerce Commission.** Examiner of accounts, Interstate Commerce Commission [announcement of examination] Sept. 3, 4, 1908. July 30, 1908. [2] p. f° †
- Naval Observatory.** Assistant, Naval Observatory [announcement of examination] Aug. 12, 13, 1908. July 6, 1908. [2] p. 4° †
- Philippine Islands.** Assistant (male), teacher (male and female), Philippine service [announcement of examination] Aug. 26, 27, 1908. [July 16, 1908.] n. t. p. [4] p. 4° †
- Scientific assistant (male), Philippine service [agricultural inspector, announcement of examination] Sept. 2, 1908. July 20, 1908. [2] p. f° †
- Political assessments.** Information concerning political assessments and partisan activity of officeholders. June, 1908. n. t. p. 6 p. †
- Surgeons.** Assistant surgeon, Freedmen's Hospital [announcement of examination] Sept. 2, 3, 1908. July 22, 1908. [2] p. 4° †
- Surveyor of mineral deposits** [General Land Office, announcement of examination] Aug. 5, 1908. July 1, 1908. [2] p. 4° †
- Translator.** Bureau of Manufactures [announcement of examination] Aug. 26, 1908. July 14, 1908. [2] p. 4° †
- Type-writing.** Information for applicants for stenographer and typewriter examination; revised to July, 1908. 1908. n. t. p. 23 p. †
- Veteran preference** [in appointment to civil offices under United States Government]. June, 1908. n. t. p. 4 p. †

COMMERCE AND LABOR DEPARTMENT

NOTE.—The Department of Commerce and Labor distributes the Consular reports gratuitously.

- Accounts.** Certification of reimbursement vouchers, supplemental to Department circular 161, Feb. 17, 1908. June 11, 1908. 1 p. 4° (Dept. circular 172.) †
- Commerce.** Schedule A, classification of commodities and laws and regulations governing preparation of monthly statement of imports and exports of foreign commodities in commerce of United States. July 1, 1908. 24 p. † 8—35592
- Schedule B, classification of commodities and laws and regulations governing preparation of monthly statements of exports of domestic commodities, and shipments thereof between United States and its noncontiguous territory. July 1, 1908. 28 p. † 8—35615

Commerce. Schedule C, classification of foreign countries and dependencies for statements of imports, exports, and tonnage movement in foreign trade of United States. July 1, 1908. 10 p. †
8—35584

— Schedule E, classification of merchandise, with rates of duty, and laws and regulations governing preparation of quarterly statements of imports entered for consumption in United States. July 1, 1908. 72 p. †
8—35583

New York anchorage regulations. July 3, 1908. 1 p. 4° (Dept. circular 176; Bureau of Navigation.) †

Printing. Regulations regarding printing and binding. June 25, 1908. n. t. p. 8 p. 4° (Dept. circular 175.) [Supersedes Dept. circulars 69, Apr. 26, 1905, and 111, Mar. 14, 1906.] †

Quarantine. Consular bills of health [with list of consulates of United States]. June 11, 1908. [2] p. 4° (Dept. circular 173; Bureau of Navigation.) †

Supplies. Schedule showing contractors and prices for miscellaneous supplies during fiscal year 1909. 1908. 56 p. 4° †
8—35587

Travel of officers not required to travel constantly in discharge of their official duties. June 25, 1908. 1 p. 4° (Dept. circular 174.) †

CENSUS BUREAU

Instructions to clerks and special agents, official statistics of cities having population of over 30,000, 1908, general statistics. [1908.] 28 p. 16° †
8—35586

Same, municipal finance. [1908.] 133 p. 16° †
8—35579

Production of lumber, lath, and shingles, 1907. 1908. 11 p. [Prepared in cooperation with Forest Service.] * Paper, 5c.

COAST AND GEODETIC SURVEY

NOTE.—Beginning with Jan. 1, 1908, the monthly Notice to mariners, issued by the Coast and Geodetic Survey, was consolidated with and made a part of the Weekly notice to mariners, issued by the Light-House Board, thus making it a joint publication. The charts, coast pilots, and tide tables of the Coast and Geodetic Survey are sold at the office of the Survey in Washington, and also by one or more sales agents in each of the important American seaports.

Alaska, coast pilot notes from Yakutat Bay to Cook Inlet; [by Herbert C. Graves]. 1908. 36 p. large 8° †
8—35593

Philippine Islands, notice to mariners 5 [1908]; May 29, 1908. Manila [1908]. n. t. p. 1. 17-19. †

Tide tables for Atlantic Coast of United States, including Canada and West Indies, from Tide tables for [calendar year] 1909. 1908. [173] p. [13] il. large 8° † Paper, 15c. 7—35320/3

Charts

Norton Sound, west coast of Alaska, from British and Russian charts, surveys and reconnaissances by U. S. Army, Geological Survey, Revenue Cutter Service, etc., and Coast and Geodetic Survey to 1902; chart 9380. Scale 1:400,000. Washington, Coast and Geodetic Survey, June, 1908, first published 1900. 32.9 × 40.8 in. † 50c.

San Miguel and Lami bays, east coast of Luzon, surveyed in 1906-07; chart 4223. Scale 1:100,000. Washington, Coast and Geodetic Survey, June, 1908. 41 × 29.4 in. † 40c.

CORPORATIONS BUREAU

Report of commissioner of corporations on cotton exchanges: pt. 2, Classification of cotton: pt. 3, Range of grades deliverable on contract. May 29, 1908. xvi + 217 p. 1 pl. * Paper, 25c.

8-35428

FISHERIES BUREAU

Devils Lake, N. Dak., study of physical and biological conditions, with view to acclimatization of fish; [by Thomas E. B. Pope]. 1908. [1] + 22 p. 3 pl. map. (Bureau of Fisheries doc. 634.) * Paper, 10c.

8-35574

Fishes of Connecticut lakes and neighboring waters [by W. C. Kendall and E. L. Goldsborough]; with notes on plankton environment [by A. A. Doolittle]. 1908. [1] + 77 p. 5 il. 12 pl. map. (Bureau of Fisheries doc. 633.) * Paper, 15c.

8-35558

Statement of quantities and values of certain fishery products landed at Boston and Gloucester, Mass., by American fishing vessels, June, 1908. [1908.] 1 p. oblong 8° (Statistical bulletin 215.) †

IMMIGRATION AND NATURALIZATION BUREAU

Immigration and emigration statement [and] inward passenger movement, June, 1908. [1908.] 1 p. narrow f° [Monthly.] †

Immigration statement and inward passenger movement, May, 1908, and increase of population by immigration during 8 months ended Feb. 29, 1908. [1908.] 1 p. narrow f° [Monthly.] †

Poučenie pre prístahovalcov ohľadom Spojených Štátov o príležitostiach o vláde a o ústavoch v týchže; upravil Národný Spolok Synov Americkéj Revolúcie. Washington, Úrad Vládnej Tlačiarne, 1908. 7 p. 12° [Same, in Slovak, as Information for immigrants concerning United States, for which see Monthly catalogue for March, 1908, page 399.] †

Treaty, laws, and regulations governing admission of Chinese; regulations approved Feb. 26, 1907. Edition of June, 1908. 1908. 62 p. (Dept. of Commerce and Labor doc. 54.) * Paper, 10c.

7-35280/2

LABOR BUREAU

Bulletin 75; Mar. 1908. 1908. iii + 283-663 + [iii] p. [4] il. [Bi-monthly.] * Paper, 30c.

4-18114/5

Same. (H. doc. 857, pt. 2.)

LIGHT-HOUSE BOARD

NOTE.—Beginning with Jan. 1, 1908, the monthly Notice to mariners, issued by the Coast and Geodetic Survey, was consolidated with and made a part of the Weekly notice to mariners, issued by the Light-House Board, thus making it a joint publication. The List of lights and fog signals, the List of lights, buoys, and day marks, and the Weekly notice to mariners can be obtained, free of charge, on application to the office of the Board at Washington, the inspectors and engineers of the several lighthouse districts, the United States custom-houses, the principal agencies of the Coast and Geodetic Survey, the Hydrographic Office, the branch hydrographic offices, and United States consulates in foreign ports.

List of lights and fog signals of United States on Pacific Coast of North America and on Hawaiian, Midway, Guam, and American Samoan islands and of Canada on coast of British Columbia; corrected to Apr. 30, 1908. 1908. 105 p. 11 pl. on 11 p. map, large 8° †

7-24422/5

- Specifications and contract for metal work for tower at Makapuu Point light-station, Oahu, Hawaii. 1908. 38 p. 4° †
- Weekly notice to mariners, changes in aids to navigation and chart corrections affecting publications of Light-House Board and Coast and Geodetic Survey, nos. 27-30; July 3-31, 1908. 1908. †

MANUFACTURES BUREAU

NOTE.—The Bureau furnishes its publications gratuitously to those who apply for them.

- Canada, trade for [calendar] year 1907. June, 1908. 94 p. (Consular reports, annual series 4.) † 8—35594
- Customs tariff of New Zealand (law of Sept. 25, 1907); collated by N. I. Stone. 1908. 36 p. (Tariff series 8.) † 8—35571
- Daily consular and trade reports, nos. 3216-41; July 1-31, 1908. [1908.] [7] il. [Daily except Sundays and holidays.] †
- Monthly consular and trade reports, July, 1908; no. 334. 1908. 208 p. * Paper, 20c. 6—35356/4
- Panama, trade for 1907. June, 1908. 15 p. (Consular reports, annual series 3.) †

NAVIGATION BUREAU

- Rules and regulations governing movements and anchorage of vessels in St. Marys River. July 10, 1908. 7 p. †

STANDARDS BUREAU

- Standard specifications for purchase of carbon-filament incandescent lamps. July 1, 1908. n. t. p. 8 p. 4° (Bureau circular 13, 2d edition revised.)

STATISTICS BUREAU

NOTE.—The Bureau furnishes its publications gratuitously to those who apply for them.

- Advance sheets from Monthly summary of commerce and finance showing details of imports and exports by articles and countries for May, 1908. 1908. 55 p. 4° †
- Exports of domestic breadstuffs, meat and dairy products, food animals, cotton, and mineral oils, June, 1908. 1908. 12 p. 4° (Bulletin 12, series 1907-08.) [Monthly.] †
- Monthly summary of commerce and finance of United States, May, 1908; no. 11, series 1907-08. 1908. p. 1093-2183, 4° * Paper, 25c. 7—6084/5
- Same. (H. doc. 15, pt. 11.)
- Monthly summary of internal commerce of United States, May [1906-] 08. 1908. c. t. o. p. 189-238, 4° [From Monthly summary of commerce and finance, May, 1908.] † 7—6084/5
- Total values of imports and exports of United States, June, 1908. [1908.] [2] p. 4° [Monthly.] †

STEAMBOAT-INSPECTION SERVICE

- Laws governing Service, Revised statutes as modified by acts of Congress. Edition, June 8, 1908. 1908. 57 p. * Paper, 10c. 8—35570

COURT OF CLAIMS

- Betsey, brig. Brig Betsey, John Harris, master, Insurance Company of North America v. United States; evidence for claimant. 1908. n. t. p. French spoiliations, no. 544, p. 9-18. ‡
- Brown and Gritts v. United States; evidence for defendant. 1908. no. 29987, p. 82a. ‡
- Cherokee Indians. In matter of enrollment of persons claiming rights in Cherokee Nation by marriage v. United States, ex parte John J. Hemphill and Kenneth S. Murchison; findings of fact [and conclusion of law]. 1908. n. t. p. Departmental no. 76, p. 1-14. ‡
- Kitty and Maria, schooner. Schooner Kitty and Maria, John Logan, master, Insurance Company of State of Pennsylvania v. United States; evidence for claimant. 1908. n. t. p. French spoiliations, no. 826, p. 23-25. ‡
- Loring. Margaret G. Loring, executrix of Harrison Loring, v. United States; evidence for claimant. 1908. n. t. p. no. 22892, p. 879-912. ‡
- Macleod & Company v. United States; evidence for defendants. 1908. n. t. p. no. 27196, p. 39-76. ‡
- Minerva, brig. Brig Minerva, William Moodie, master, Insurance Company of North America v. United States; evidence for claimant. 1908. n. t. p. French spoiliations, no. 1273, p. 11-16. ‡
- Societe Anonyme des Anciens Etablissements Cail v. United States; evidence for claimant as to values. 1908. n. t. p. no. 18796, p. 1-39. ‡
- Southern Coast Transportation Company v. United States; evidence for defendants [and] claimant. 1908. n. t. p. no. 30060, p. 1-62. ‡

DISTRICT OF COLUMBIA

NOTE.—For annual report on sinking fund and funded debt see Treasurer of United States.

- Harbor Committee. Report on improvement of harbor front. May 25, 1908. 29 p. 9 [24] pl. (incl. maps). (S. doc. 519.) * Paper, 20c. 8—35610

GEOGRAPHIC BOARD

- Decisions, June 30, 1908. [1908.] [2] p. ‡

GOVERNMENT PRINTING OFFICE

DOCUMENTS OFFICE

- Advance sheets of 3d edition of Checklist of United States public documents, C, Commerce and Labor Department, [class] C2, Alaskan Fisheries Division, June 22, 1908. [1908.] 1 p. 4° ‡
8—7365/2
- Same, C4, Coast and Geodetic Survey, June 22, 1908. [1908.] n. t. p. 6 l. 4° ‡
8—7365/2
- Same, C5, Corporations Bureau, June 24, 1908. [1908.] 1 p. 4° ‡
8—7365/2

Monthly catalogue, United States public documents, no. 162; June, 1908. 1908. p. 519-563. [A volume title-page for nos. 151-162 accompanies this issue.] * Paper, \$1.10 a yr. 4-18088/2

INTERIOR DEPARTMENT

NOTE.—The decisions of the Department of the Interior in pension cases are issued in slips and in signatures, and the decisions in land cases are issued in signatures, both being published later in bound volumes at prices ranging from \$1.05 to \$2.00 per volume. Subscribers may deposit \$1.00 with the Superintendent of Documents and receive the contents of a volume of the decisions of either kind in separate parts as they are issued.

Reports, fiscal year 1907; v. 1, Secretary, Bureaus, except Office of Indian Affairs, eleemosynary institutions, national parks and reservations. 1907 [1908]. xiv+627 p. [4] pl. (incl. map) and [4] maps. (H. doc. 5.) ‡

EDUCATION BUREAU

16th annual report on introduction of domestic reindeer into Alaska, by Sheldon Jackson, 1906. May 20, 1908. 93 p. (S. doc. 501.)

* Paper, 15c.

List of publications of Bureau, 1867-1907. 1908. 69 p. (Bulletin 2, 1908; whole no. 385.) ‡

7-GS02/4

GEOLOGICAL SURVEY

NOTE.—The publications of the United States Geological Survey consist of annual reports (restricted to one volume each, beginning with report for 1902), bulletins, Mineral resources, Professional papers, and Water-supply papers, formerly Water-supply and Irrigation papers; and maps, Monographs, and folios of the Geologic atlas and the Topographic atlas of the United States, which are sold at prices ranging from 5c. to \$11.00 each. A wholesale rate has been established for topographic and geologic folios, whenever the sum transmitted solely for folios at the wholesale price amounts to at least \$5.10; that is, a discount of 40 per cent will be given whenever 34 or more folios that sell singly for 25c., or their equivalent in higher priced folios, are ordered at one time. Address the Director of the Geological Survey, Washington. For topographic sheets see page 24.

Alaska. Mineral resources of Alaska, report on progress of investigations in 1907; [articles] by Alfred H. Brooks and others. 1908. 294 + v p. 7 il. 5 pl. (maps, 1 in pocket). (Bulletin 345.)

* Paper, 45c.

GS 5-752/3

— Same. (H. doc. 977.)

— Same, A, General reports; [articles] by A. H. Brooks and J. P. Hutchins. 1908. [1] + 5-77 + v p. 1 pl. (map in pocket). [From Bulletin 345.] ‡

— Same, B, Southeastern Alaska; [articles] by C. W. Wright and Sidney Paige. 1908. [1] + 78-126 p. 1 il. 1 pl. (map). [From Bulletin 345.] ‡

— Same, C, Copper River region and Prince William Sound; by F. H. Moffit and A. G. Maddren. 1908. [1] + 127-178 p. 1 il. 1 pl. (map). [From Bulletin 345.] ‡

CONTENTS.—Mineral resources of Kotsina and Chittina valleys, Copper River region; by Fred H. Moffit and A. G. Maddren.—Notes on copper prospects of Prince William Sound; by Fred H. Moffit.

— Same, D, Yukon Basin; [articles] by L. M. Prindle and C. C. Covert. 1908. [1] + 179-205 p. 1 pl. (map). [From Bulletin 345.] ‡

— Same, E, Seward Peninsula; [articles] by P. S. Smith, Adolph Knopf, and F. F. Henshaw. 1908. [1] + 206-285 p. [5] il. 1 pl. (map). [From Bulletin 345.] ‡

- Asphalt. Production of asphalt and bituminous rock, [calendar year] 1907; by Joseph A. Taff. 1908. 10 p. [From Mineral resources, 1907.] †
- Barites. Production of barytes and strontium, [calendar year] 1907 [with bibliography]; by Ernest F. Burchard. 1908. 14 p. [From Mineral resources, 1907.] †
- Beams. Strength of concrete beams, results of tests of 108 beams made at structural-materials testing laboratories; by Richard L. Humphrey. 1908. 59 p. 13 il. 1 pl. (Bulletin 344.) * Paper, 10c. GS 8—248/2
- Same. (H. doc. 976.)
- Coal. Burning of coal without smoke in boiler plants, preliminary report [with bibliography]; by D. T. Randall. 1908. 26 + 1 p. (Bulletin 334; H. doc. 729.) * Paper, 5c. GS 8—7/3
- Production of anthracite coal, [calendar year] 1907; by William W. Ruley. 1908. 9 p. [From Mineral resources, 1907.] †
- Controller Bay. Geology and mineral resources of Controller Bay region, Alaska [with bibliography], by G. C. Martin; [and preface, by Alfred H. Brooks]. 1908. 141 + v p. 2 il. 10 pl. (incl. maps, 3 in pocket). (Bulletin 335; H. doc. 730.) * Paper, 70c. GS 8—247/3
- Fairbanks and Rampart quadrangles, Yukon-Tanana region, Alaska, by L. M. Prindle; with section on Rampart placers, by F. L. Hess; and paper on Water supply of Fairbanks region, by C. C. Covert; [with preface, by Alfred H. Brooks]. 1908. 102 + v p. 3 il. 5 pl. (incl. maps, 2 in pocket). (Bulletin 337.) * Paper, 25c. GS 8—246/6
- Same. (H. doc. 732.)
- Fluorspar. Production of fluorspar and cryolite, [calendar year] 1907 [with bibliography]; by Ernest F. Burchard. 1908. 7 p. [From Mineral resources, 1907.] †
- Fullers' earth. Production of fuller's earth, [calendar year] 1907 [with bibliography]; by F. B. Van Horn. 1908. 6 p. [From Mineral resources, 1907.] †
- Geographic tables and formulas; by Samuel S. Gannett. 1908. 318 p. 7 [S] il. † GS 8—314/3
- Gypsum and gypsum products, [calendar year] 1907 [with bibliography]; by Ernest F. Burchard. 1908. 10 p. [From Mineral resources, 1907.] †
- Lead. Investigations relating to lead and zinc by Survey in 1907 [with bibliography]; by C. E. Siebenthal. 1908. 46 p. 2 [1] pl. (map). [From Bulletin 340.] †
- Mica. Production of mica, [calendar year] 1907; by Douglas B. Sterrett. 1908. 12 p. [From Mineral resources, 1907.] †
- Passaic folio, N. J.—N. Y. [with bibliography]. Washington, Geological Survey, 1908. c. t. o. 27 p. 32 il. (incl. pl.) [4] maps, large 4° (Geologic atlas of United States 157.) * Paper, 25c. GS 8—315/6
- Seward Peninsula. Gold placers of parts of Seward Peninsula, Alaska, including Nome, Council, Kougarok, Port Clarence, and Goodhope precincts; [articles] by Arthur J. Collier, Frank L. Hess, Philip S. Smith, and Alfred H. Brooks. 1908. 343 + v p. 19 il. 11 pl. (incl. 4 maps in pocket). (Bulletin 328; H. doc. 723.) * Paper, 70c. GS 8—245/5
- Slate. Production of slate, [calendar year] 1907; by A. T. Coons. 1908. 8 p. [From Mineral resources, 1907.] †

- Stadia-arc. Instructions for using Beaman stadla arc attachment. [June] 1908. n. t. p. 4 p. 16° †
- Surveying. Primary traverse. [June] 1908. n. t. p. 4 p. 16° †
- Spirit leveling. [June] 1908. n. t. p. 15 p. 16° †
- Tin. Production of tin, [calendar year] 1907; by Frank L. Hess. 1908. 7 p. [From Mineral resources, 1907.] †
- Topographic maps. Nature and uses of topographic maps of Survey. 1908. n. t. p. 4 p. †
- Triangulation. Primary triangulation. [June] 1908. n. t. p. 4 p. 16° †

Topographic sheets

NOTE.—The Geological Survey is making a topographic map of the United States. The sheets of which it is composed are projected without reference to political divisions, and are designated by some prominent town or natural feature found on them. Three scales are used, 1:62,500, 1:125,000, and 1:250,000. These correspond, approximately, to 1 mile, 2 miles, and 4 miles to 1 linear inch on the map. The size, unless otherwise given, is about 17.5 inches in height by 11.5 to 16 inches in width, exclusive of the margin, the width varying with the latitude. A description of the topographic map is printed on the reverse of each sheet.

About one-third of the area of the country, excluding outlying possessions, has been mapped, nearly every State being represented. Massachusetts, Connecticut, Rhode Island, New Jersey, and the District of Columbia are completely mapped. Sheets of the regular size are sold by the Survey at 5c. each; but in lots of 100 or more copies, whether of the same sheet or of different sheets, the price is 3c. each. In no case can orders be filled at the wholesale rate unless the sum remitted solely for topographic maps amounts to at least \$3.00.

- Arizona, Tombstone mining map, lat. 31° 41'–31° 42' 52", long. 110° 03' 30"–110° 05'. Scale 1:6,000, contour interval 10 ft. [Washington, Geological Survey] edition of Jan. 1908. 23.9 × 15.9 in. † 10c.
- California, Courtland quadrangle, lat. 38° 15'–38° 30', long. 121° 30'–121° 45'. Scale 1:62,500, contour interval 10 ft. [Washington, Geological Survey] edition of Mar. 1908. 17.5 × 13.8 in. † 5c.
- Montana, Phillipsburg quadrangle, lat. 46°–46° 30', long. 113°–113° 30'. Scale 1:125,000, contour interval 100 ft. [Washington, Geological Survey] edition of May, 1908. 17.5 × 12.2 in. † 5c.
- New York, New Jersey, Pennsylvania, Port Jervis quadrangle, lat. 41° 15'–41° 30', long. 74° 30'–74° 45'. Scale 1:62,500, contour interval 20 ft. [Washington, Geological Survey] edition of Apr. 1908. 17.5 × 13.2 in. † 5c.
- Ohio, Ashland quadrangle, lat. 40° 45'–41°, long. 82° 15'–82° 30'. Scale 1:62,500, contour interval 20 ft. [Washington, Geological Survey] edition of Apr. 1908. 17.5 × 13.3 in. † 5c.
- Ohio, Chillicothe quadrangle, lat. 39° 15'–39° 30', long. 82° 45'–83°. Scale 1:62,500, contour interval 20 ft. [Washington, Geological Survey] edition of Mar. 1908. 17.5 × 13.6 in. † 5c.
- Ohio, Miamisburg quadrangle, lat. 39° 30'–39° 45', long. 84° 15'–84° 30'. Scale 1:62,500, contour interval 20 ft. [Washington, Geological Survey] edition of Feb. 1908. 17.5 × 13.6 in. † 5c.
- Ohio, New London quadrangle, lat. 41°–41° 15', long. 82° 15'–82° 30'. Scale 1:62,500, contour interval 20 ft. [Washington, Geological Survey] edition of May, 1908. 17.5 × 13.3 in. † 5c.
- Ohio, West Salem quadrangle, lat. 40° 45'–41°, long. 82°–82° 15'. Scale 1:62,500, contour interval 20 ft. [Washington, Geological Survey] edition of Feb. 1908. 17.5 × 13.3 in. † 5c.

Vermont-New Hampshire, Hanover quadrangle, lat. 43° 30'—43° 45', long. 72° 15'—72° 30'. Scale 1:62,500, contour interval 20 ft. [Washington, Geological Survey] edition of May, 1908. 17.5 × 12.8 in. †5c.

INDIAN AFFAIRS OFFICE

In Court of Claims, John T. Ayres, executor of Eli Ayres, v. United States, no. 11903, Congressional; supplemental brief for Chickasaw Nation on motion to amend findings. [1908.] c. t. o. 30 p. †

LAND OFFICE, GENERAL

NOTE.—The General Land Office publishes a large general map of the United States, which is sold at \$1.00; and also separate maps of the States and Territories in which public lands are to be found, which are sold at 12 cents per sheet. California, Florida, and Alaska are in 2 sheets each. Address the Superintendent of Documents, Washington, D. C.

Instructions [to registers and receivers] governing homestead entries commuted prior to May 29, 1908, and validating certain 2d homestead entries. June 13, 1908. n. t. p. 3 p. †

Regulations concerning right of way over public lands and reservations for canals, ditches, and reservoirs, and use of right of way for various purposes. June 6, 1908. 27 p. † 8—35595

PATENT OFFICE

NOTE.—The Patent Office publishes specifications and drawings of patents, both in single copies and monthly volumes, the former at 5c. and the latter at \$5.00. The former are not enumerated in this catalogue. For certified copies of patents, including specification, drawing, certificate, and grant, the price is 80c. A variety of indexes, giving a complete view of the work of the Office from 1790 to date, are published at prices ranging from 25c. to \$10.00 per volume. The Rules of practice and pamphlet Patent laws are furnished free. The Patent Office issues coupon orders in packages of 20 at \$1.00 per package, or in books containing 100 coupons at \$5.00 per book. One coupon will procure a specification with drawings. These coupons are good until used. Address Chief Clerk, Patent Office.

Official gazette, July 7—28, 1908: v. 135, nos. 1—4. 1908. c. t. o. [xcviii]+1—898 p. il. large 8° [Weekly.] † Paper, 10c. single copy, \$5.00 a yr. 4—18256/3

NOTE.—Contains the patents, trade-marks, designs, and labels issued each week; also decisions of the Commissioner of Patents and of United States courts in patent cases.

United States statutes concerning registration of prints and labels with rules of Office relating thereto. Edition of July 1, 1902, revised June 12, 1908. 1908. 19 p. † 8—35409/3

United States statutes concerning registration of trade-marks, with rules of Office relating thereto. Revised Aug. 1, 1906 [with changes to June 12, 1908]. 3d reprint June 12, 1908. 61 + 6 p. 1 pl. † 8—35573

PENSION BUREAU

Information relating to army and navy pensions. 1908. n. t. p. 21 p. †

RECLAMATION SERVICE

Reclamation record, July, 1908. [1908.] n. t. p. p. 49—60, 4° [Monthly.] †

52694—08—4

INTERSTATE COMMERCE COMMISSION

NOTE.—The Commission furnishes its reports gratuitously to those who apply for them.

- Apples. *G. B. Long & Company v. International Railway Company et al.*; submitted May 11, 1908, decided June 23, 1908; report of Commission. 1908. c. t. o. p. 116, 117. [From Reports, v. 14.] †
- Bills of lading. In matter of bills of lading, June 27, 1908; report of Commission. 1908. c. t. o. p. 346-355. [From Reports, v. 14.] †
- Same; report and order of Commission. 1908. c. t. o. 346-355+[1] p. [From Reports, v. 14.] †
- Canned goods. *Erie Preserving Company v. Lake Shore & Michigan Southern Railway Company et al.*; submitted May 11, 1908, decided June 23, 1908; report of Commission. 1908. c. t. o. p. 118. [From Reports, v. 14.] †
- Car-couplers. Decision under safety appliance acts, *United States v. Wheeling and Lake Erie Railroad Company*, in district court for northern district of Ohio, opinion on demurrer to petition; decided June 16, 1908. 1908. n. t. p. 5 p. †
- Decisions under safety-appliance acts, automatic couplers, *Missouri Pacific Railway Company v. Henry Brinkmeier*, in Supreme Court of Kansas, [opinion of court] Apr. 6, 1907 [and on rehearing Jan. 11, 1908]. 1908. n. t. p. 7 p. †
- Decisions under safety-appliance acts, *United States v. Lehigh Valley Railroad Company*, in district court for eastern district of Pennsylvania, Dec. term 1906 [statement of facts and charge to jury]; decided Mar. 17, 1908. 1908. n. t. p. 4 p. †
- Decisions under safety-appliance acts, *United States v. Oregon Short Line Railroad Company*, in district court for district of Idaho [opinion of court]; decided June 4, 1908. 1908. n. t. p. 3 p. †
- Decisions under safety-appliance acts, *United States v. Pennsylvania Railroad Company*, in district court for eastern district of Pennsylvania, Dec. term 1906 [statement of facts and charge to jury]; decided Mar. 18, 1908. 1908. n. t. p. 4 p. †
- Decisions under safety-appliance acts, *United States v. Philadelphia and Reading Railway Company*, in district court for eastern district of Pennsylvania, Dec. term 1906 [statement of facts and charge to jury]; decided Mar. 17, 1908. 1908. n. t. p. 5 p. †
- Decisions under safety-appliance acts, *United States v. Philadelphia & Reading Railway Company*, in district court for eastern district of Pennsylvania, Sept. term 1907 [statement of facts and charge to jury]; decided Mar. 17, 1908. 1908. n. t. p. 4 p. †
- Decisions under safety-appliance acts, *United States v. Terminal Railroad Association of St. Louis*, in district court for eastern district of Missouri, eastern division [statement of facts and charge to jury]; decided June 3, 1908. 1908. n. t. p. 3 p. †
- Decisions under safety-appliance acts, *United States v. Union Stock Yards Company of Omaha*, in district court for district of Nebraska [opinion of court]; decided Feb. 21, 1908. 1908. n. t. p. 7 p. †

- Car-couplers. In circuit court of appeals, 6th circuit, United States v. Louisville & Nashville Railroad Company, no. 1796, in error to district court for western district of Kentucky; brief and argument of plaintiff in error. [1908.] c. t. o. 24 p. †
- In district court for eastern district of Illinois, United States v. Wabash Railroad Company, statement of facts [and charge to jury], Nov. 19, 1907. [Reprint] 1908. n. t. p. 3 p. †
- United States circuit court of appeals, 5th circuit, International & Great Northern Railroad Company v. United States, no. 1776, in error to district court for southern district of Texas; brief and argument of defendant in error. [1908.] c. t. o. 15 p. †
- Cattle. Corn Belt Meat Producers' Association v. Chicago, Burlington & Quincy Railway Company et al.; submitted June 1, 1908, decided June 27, 1908; report of Commission. 1908. c. t. o. p. 376-397. [From Reports, v. 14.] †
- Coal. George's Creek Basin Coal Company et al. v. Baltimore & Ohio Railroad Company et al.; submitted May 5, 1908, decided June 23, 1908; report of Commission. 1908. c. t. o. p. 127-135. [From Reports, v. 14.] †
- Oklahoma & Arkansas Coal Traffic Bureau v. Chicago, Rock Island & Pacific Railroad Company et al.; submitted Apr. 20, 1908, decided June 24, 1908; report of Commission. 1908. c. t. o. p. 216-231, [2] il. [From Reports, v. 14.] †
- Cotton-seed. Carl Eichenberg v. Southern Pacific Company et al.; submitted Apr. 3, 1908, decided June 24, 1908; report of Commission. 1908. c. t. o. p. 250-271. [From Reports, v. 14.] †
- Decisions. Table of cases and opinions of Commission, decisions under amended act, Aug. 23, 1906-June 8, 1908, v. 12, 13 [of Commission] reports; [by] Henry Talbott. 1908. 11 p. 4° †
- Door-guards. Victor Fuel Company v. Atchison, Topeka & Santa Fe Railway Company; submitted May 18, 1908, decided June 23, 1908; report of Commission. 1908. c. t. o. p. 119, 120. [From Reports, v. 14.] †
- Explosives. Regulations for transportation of explosives. July 15, 1908. 26 p. †
- Freight-cars. Glenn W. Traer, receiver of Illinois Collieries Company, v. Chicago, Burlington & Quincy Railroad Company; submitted June 1, 1908, decided June 24, 1908; report of Commission. 1908. c. t. o. p. 165-169. [From Reports, v. 14.] †
- Freight rates. Burnham, Hanna, Munger Dry Goods Company et al. v. Chicago, Rock Island & Pacific Railway Company et al.; submitted Feb. 24, 1908, decided June 24, 1908; report of Commission. 1908. c. t. o. p. 299-314. [From Reports, v. 14.] †
- Digest of proceedings in 59th Congress, 1st session, relating to regulation of railroad rates (H. 12987), from daily issue of Congressional record; [by] J. Fletcher Johnston. 1908. 52 p. 4° †
- Oklahoma v. Atchison, Topeka & Santa Fe Railway Company; same v. Atchison, Topeka & Santa Fe Railway Company et al.; same v. Chicago, Rock Island & Pacific Railway Company et al.; same v. Missouri, Kansas & Texas Railway Company; same v. Chicago, Rock Island & Pacific Railway Company et al.; same v. Chicago, Rock Island & Pacific Railway Company, June 22, 1908; report of Commission. 1908. c. t. o. p. 147-149. [From Reports, v. 14.] †

Freight rates. [Order promulgated] at general session of Commission, June 25, 1908, in matter of use of tariffs containing long-and-short-haul clauses, maxima rules, and alternative rate or fare provisions. [1908.] 1 p. 4° †

— Oshkosh Logging Tool Company et al. *v.* Chicago & Northwestern Railway Company; submitted May 12, 1908, decided June 22, 1908; report of Commission. 1908. c. t. o. p. 114, 115. [From Reports, v. 14.] †

— Oshkosh Logging Tool Company et al. *v.* Chicago & Northwestern Railway Company et al.; Termatt & Monahan Company et al. *v.* Wisconsin Central Railway Company et al.; Oshkosh Logging Tool Company et al. *v.* Chicago, Milwaukee & St. Paul Railway Company et al.; submitted May 12, 1908, decided June 22, 1908; report of Commission. 1908. c. t. o. p. 100-113. [From Reports, v. 14.] †

— Supplement 1 to Tariff circular 15a [Regulations governing construction and filing of freight tariffs and classifications and passenger fare schedules, administrative rulings and opinions]. 1908. 14 p. (Tariff circular 15a, supplement 1.) †

Fur. Joseph Ullman *v.* Adams Express Company et al.; submitted June 13, 1908, decided June 25, 1908; report of Commission. 1908. c. t. o. p. 340-345. [From Reports, v. 14.] †

Grain. Banner Milling Company et al. *v.* New York Central & Hudson River Railroad Company et al.; submitted June 26, 1908; decided June 27, 1908; report of Commission. 1908. c. t. o. p. 398-409. [From Reports, v. 14.] †

— Hecker-Jones-Jewell Milling Company *v.* Baltimore & Ohio Railroad Company et al.; submitted June 17, 1908, decided June 24, 1908; report of Commission. 1908. c. t. o. p. 356-363. [From Reports, v. 14.] †

— In matter of allowances to elevators by Union Pacific Railroad Company; submitted May 22, 1908, decided June 29, 1908; report of Commission. 1908. c. t. o. p. 315, 316. [From Reports, v. 14.] †

— Traffic Bureau, Merchants' Exchange of St. Louis *v.* Chicago, Burlington & Quincy Railroad Company; same *v.* Missouri Pacific Railway Company; same *v.* Chicago, Rock Island & Pacific Railway Company; same *v.* St. Louis & San Francisco Railroad Company; same *v.* Missouri, Kansas & Texas Railway Company; submitted Dec. 4, 1907, decided June 29, 1908; report of Commission. 1908. c. t. o. p. 317-332. [From Reports, v. 14.] †

Granite. C. E. Tayntor Granite Company *v.* Montpelier & Wells River Railroad et al.; submitted May 25, 1908, decided June 24, 1908; report of Commission. 1908. c. t. o. p. 136-138. [From Reports, v. 14.] †

— Jones Brothers Company *v.* Central Vermont Railway Company et al. [relative to reparation for \$18.80 on overcharge for granite shipped from Barre, Vt., to Bushwick Junction, N. Y.]; submitted May 25, 1908, decided June 24, 1908; report of Commission. 1908. c. t. o. p. 142. [From Reports, v. 14.] †

— Jones Brothers Company *v.* Central Vermont Railway Company et al. [relative to reparation for \$14.20 on overcharge for granite shipped from Barre, Vt., to Bushwick Junction, N. Y.]; submitted May 25, 1908, decided June 24, 1908; report of Commission. 1908. c. t. o. p. 141. [From Reports, v. 14.] †

- Granite. *Jones Brothers Company v. Central Vermont Railway Company et al.* [relative to reparation for \$1.02 on overcharge for granite shipped from Barre, Vt., to Scranton, Pa.]; submitted May 25, 1908, decided June 24, 1908; report of Commission. 1908. c. t. o. p. 143. [From Reports, v. 14.] †
- *Jones Brothers Company v. Montpelier & Wells River Railroad et al.* [relative to reparation for \$17.01 on overcharge for granite shipped from Barre, Vt., to Chesaning, Mich.]; submitted May 25, 1908, decided June 24, 1908; report of Commission. 1908. c. t. o. p. 144. [From Reports, v. 14.] †
- *Jones Brothers Company v. Montpelier & Wells River Railroad et al.* [relative to reparation for \$30 on overcharge for granite shipped from Barre, Vt., to Springfield, Mass.]; submitted May 25, 1908, decided June 24, 1908; report of Commission. 1908. c. t. o. p. 145. [From Reports, v. 14.] †
- *Jones Brothers Company v. Montpelier & Wells River Railroad et al.* [relative to reparation for \$12.60 on overcharge for granite shipped from Barre, Vt., to Chesaning, Mich.]; submitted May 25, 1908, decided June 24, 1908; report of Commission. 1908. c. t. o. p. 139. [From Reports, v. 14.] †
- *Jones Brothers Company v. Montpelier & Wells River Railroad et al.* [relative to reparation for \$23.10 on overcharge for granite shipped from Barre, Vt., to Troy, N. Y.]; submitted May 25, 1908, decided June 24, 1908; report of Commission. 1908. c. t. o. p. 140. [From Reports, v. 14.] †
- *Lazarri & Barton Company v. Montpelier & Wells River Railroad et al.*; submitted May 25, 1908, decided June 24, 1908; report of Commission. 1908. c. t. o. p. 146. [From Reports, v. 14.] †
- Iron and steel. *Ottumwa Bridge Company v. Chicago, Milwaukee & St. Paul Railway Company*; [same] *v. Chicago, Rock Island & Pacific Railway Company*; submitted June 22, 1908, decided June 24, 1908; report of Commission. 1908. c. t. o. p. 121-126. [From Reports, v. 14.] †
- Lime. *C. L. Flaccus Glass Company v. Cleveland, Cincinnati, Chicago & St. Louis Railway Company et al.*; submitted June 13, 1908, decided June 30, 1908; report of Commission. 1908. c. t. o. p. 333-335. [From Reports, v. 14.] †
- Lumber and timber. *Greater Des Moines Committee, incorporated, v. Chicago Great Western Railway Company et al.*; same *v. Missouri Pacific Railway Company et al.*; same *v. Wabash Railroad Company et al.*; submitted June 6, 1908, decided June 24, 1908; report of Commission. 1908. c. t. o. p. 294-298. [From Reports, v. 14.] †
- *National Wholesale Lumber Dealers' Association et al. v. Atlantic Coast Line Railroad Company et al.*; [same] *v. Pennsylvania Railroad Company et al.*; *Pacific Coast Lumber Manufacturers' Association et al. v. Atchison, Topeka & Santa Fe Railway Company et al.*; submitted Jan. 9, 1908, decided June 23, 1908; report of Commission. 1908. c. t. o. p. 154-164. [From Reports, v. 14.] †
- *Nicola, Stone & Myers Company v. Louisville & Nashville Railroad Company et al.*; *Stetson Lumber Company v. Southern Railway Company et al.*; *J. L. Phillips & Company v. Illinois Central Railroad Company et al.*; [same] *v. Southern Railway Company et al.*; [same] *v. [same]*; submitted June 8, 1908, decided June 25, 1908; report of Commission. 1908. c. t. o. p. 199-209. [From Reports, v. 14.] †

- Lumber and timber. *Pacific Coast Lumber Manufacturers' Association et al. v. Northern Pacific Railway Company et al.*; *South-west Washington Lumber Manufacturers' Association v. [same]*; submitted Mar. 20, 1908, decided June 2, 1908; report of Commission. 1908. c. t. o. p. 23-40. [From Reports, v. 14.] †
- *Randolph Lumber Company v. Seaboard Air Line Railway et al.*; filed June 23, 1908, decided June 27, 1908; report [of Commission] on petition for rehearing. 1908. c. t. o. p. 338, 339. [From Reports, v. 14.] †
- *Southern Pine Lumber Company v. Southern Railway Company*; submitted June 8, 1908, decided June 25, 1908; report of Commission. 1908. c. t. o. p. 195-198. [From Reports, v. 14.] †
- *Star Grain & Lumber Company et al. v. Atchison, Topeka & Santa Fe Railway Company et al.*; submitted Apr. 15, 1908, decided June 23, 1908; report of Commission. 1908. c. t. o. p. 364-373. [From Reports, v. 14.] †
- *William Patten v. Wisconsin Central Railway Company et al.*; submitted May 14, 1908, decided June 27, 1908; report of Commission. 1908. c. t. o. p. 189, 190. [From Reports, v. 14.] †
- Machinery. *Struthers-Wells Company v. Pennsylvania Railroad Company et al.*; submitted June 20, 1908, decided June 27, 1908; report of Commission. 1908. c. t. o. p. 291-293. [From Reports, v. 14.] †
- Manure. *Montgomery Freight Bureau v. Mobile & Ohio Railroad Company et al.*; submitted June 23, 1908, decided June 24, 1908; report of Commission. 1908. c. t. o. p. 374, 375. [From Reports, v. 14.] †
- *Montgomery Freight Bureau v. Western Railway of Alabama et al.*; submitted June 22, 1908, decided June 24, 1908; report of Commission. 1908. c. t. o. p. 150-153. [From Reports, v. 14.] †
- Petroleum. *Marshall Oil Company v. Chicago & Northwestern Railway Company et al.*; submitted Nov. 6, 1907, decided June 27, 1908; report of Commission. 1908. c. t. o. p. 210-214. [From Reports, v. 14.] †
- *National Petroleum Association v. Ann Arbor Railroad Company et al.*; submitted Nov. 7, 1907, decided June 22, 1908; report of Commission. 1908. c. t. o. p. 272-283. [From Reports, v. 14.] †
- *National Petroleum Association v. Chicago, Milwaukee & St. Paul Railway Company et al.* [relative to freight rates on petroleum shipped from Chicago, Ill., to Omaha, Nebr.]; submitted Nov. 7, 1907, decided June 27, 1908; report of Commission. 1908. c. t. o. p. 287-290. [From Reports, v. 14.] †
- *National Petroleum Association v. Chicago, Milwaukee & St. Paul Railway Company et al.* [relative to freight rates on petroleum shipped from Chicago, Ill., to St. Paul, Minneapolis, and Duluth, Minn.]; submitted Nov. 7, 1907, decided June 27, 1908; report of Commission. 1908. c. t. o. p. 284-286. [From Reports, v. 14.] †
- Pooling. *Cosmopolitan Shipping Company v. Hamburg-American Packet Company et al.*; submitted Jan. 8, 1908, decided Mar. 9, 1908; report of Commission. 1908. c. t. o. p. 266-282. [From Reports, v. 13.] †
- Railroad accidents. Accident bulletin 27, showing collisions and derailments of trains and casualties to persons, Jan.-Mar. 1908. 1908. 12 p. [Quarterly.] †

- Railroad employees. In Supreme Court of Missouri, *Missouri, ex rel. Ewing Cockrell, prosecuting attorney of Johnson County, v. Missouri Pacific Railway Company*, no. 28711 [opinion of court]; decided June 6, 1908. 1908. n. t. p. 13 p. ‡
- Memorandum on hours of service law, consideration of certain objections suggested as affecting validity of hours of service law; [by Luther M. Walter]. [July 1] 1908. c. t. o. 18 p. ‡
- Railroad passes. In circuit court for northern district of Illinois, eastern division, *United States v. Chicago, Indianapolis & Louisville Railway Company*; [opinion of court]. 1908. n. t. p. 6 p. ‡
- In Supreme Court, Oct. term, 1907, *Louisville & Nashville Railroad Company v. Erasmus L. Mottley and Annie E. Mottley*; argument submitted by Commission, as amicus curiæ, by express leave of court. [1908.] c. t. o. 23 p. ‡
- Railroad switches. *Rahway Valley Railroad Company v. Delaware, Lackawanna & Western Railroad Company*; submitted June 11, 1908, decided June 24, 1908; report of Commission. 1908. c. t. o. p. 191-194. [From Reports, v. 14.] ‡
- Railroad ties. *D. B. Hussey v. Chicago, Rock Island & Pacific Railway Company*; submitted June 24, 1908, decided June 27, 1908; report of Commission on motion for rehearing. 1908. c. t. o. p. 215. [From Reports, v. 14.] ‡
- *Forster Brothers Company v. Duluth, South Shore & Atlantic Railway Company et al.*; submitted June 29, 1908, decided June 30, 1908; report of Commission. 1908. c. t. o. p. 232-236. [From Reports, v. 14.] ‡
- Railroads. Conference rulings. July 9, 1908. 16 p. (Bulletin 2.) ‡
- Storage. *New York Hay Exchange Association v. Pennsylvania Railroad Company et al.*; submitted June 15, 1908, decided June 27, 1908; report of Commission. 1908. c. t. o. p. 178-188. [From Reports, v. 14.] ‡
- *Wilson Produce Company et al. v. Pennsylvania Railroad Company*; submitted June 13, 1908, decided June 24, 1908; report of Commission. 1908. c. t. o. p. 170-177. [From Reports, v. 14.] ‡
- Switching charges. *General Electric Company v. New York Central & Hudson River Railroad Company et al.*; submitted May 2, 1908, decided June 27, 1908; report of Commission. 1908. c. t. o. p. 237-245. [From Reports, v. 14.] ‡
- *Solvay Process Company v. Delaware, Lackawanna & Western Railroad Company*; [same] *v. New York Central & Hudson River Railroad Company*; submitted Apr. 20, 1908, decided June 30, 1908; report of [Interstate Commerce] Commission. 1908. c. t. o. p. 246-249. [From Reports, v. 14.] ‡
- Traveling expenses. Circular governing traveling expenses. July 1, 1908. 4 p. ‡
- Water-tanks. *Flint & Walling Manufacturing Company v. Lake Shore & Michigan Southern Railway Company et al.*; submitted June 12, 1908, decided June 27, 1908; report of Commission. 1908. c. t. o. p. 336, 337. [From Reports, v. 14.] ‡

STATISTICS AND ACCOUNTS DIVISION

Classification of expenditures for real property and equipment of express companies as prescribed by Interstate Commerce Commission in accordance with sec. 20 of act to regulate commerce. 1st issue. 1908. 14 p. ‡

- Classification of operating expenses as prescribed by Interstate Commerce Commission for steam roads in accordance with sec. 20 of act to regulate commerce, effective July 1, 1908. 3d revised issue condensed. 1908. 15 p. †
- Classification of operating expenses of express companies as prescribed by Interstate Commerce Commission in accordance with sec. 20 of act to regulate commerce. 1st issue. 1908. 37 p. †
- Classification of operating revenues of express companies as prescribed by Interstate Commerce Commission in accordance with sec. 20 of act to regulate commerce. 1st issue. 1908. 13 p. †
- Supplement to 1st issue of Classification of operating revenues as prescribed by Interstate Commerce Commission for steam roads in accordance with sec. 20 of act to regulate commerce, effective July 1, 1908. 1908. 8 p. l. 9-13. †
- Supplement to 1st revised issue of Classification of expenditures for road and equipment as prescribed by Interstate Commerce Commission for steam roads in accordance with sec. 20 of act to regulate commerce, effective July 1, 1908. 1908. 9 p. l. 11-15. †
- Supplement to 3d revised issue of Classification of operating expenses as prescribed by Interstate Commerce Commission for steam roads in accordance with sec. 20 of act to regulate commerce, effective July 1, 1908. 1908. 15 p. l. 17-41. †

JUSTICE DEPARTMENT

- Allen, James P., and others. In circuit court for eastern district of Oklahoma, United States *v.* Allen [et al.; statement of facts]. 1908. n. t. p. 76 p. †
- Central Railroad of New Jersey. In circuit court for eastern district of Pennsylvania, Apr. sessions, 1908, United States *v.* Central Railroad Company of New Jersey; same *v.* Pennsylvania Railroad Co.; same *v.* Delaware, Lackawanna and Western Railroad Co.; same *v.* Lehigh Valley Railroad Co.; same *v.* Erie Railroad Co.; same *v.* Delaware and Hudson Co.; complainant's reply brief. [1908.] c. t. o. 52 p. †
- City Trust, Safe Deposit, and Surety Company, Philadelphia. In Court of Claims, no. 27477, J. Hampton Moore, receiver of company *v.* United States; objections to claimant's request for findings of fact, defendant's request for findings of fact, and brief. [1908.] c. t. o. i + 1461-1723 p. †
- Louisiana. In Supreme Court, Oct. term, 1908, Louisiana *v.* James Rudolph Garfield, Secretary of Interior, and Fred Dennett, commissioner of General Land Office [no. 7, original]; brief for defendants on demurrer to bill of complaint. [1908.] c. t. o. 27 p. †
- McIntyre, Robert. In Court of Claims, Robert McIntyre, administrator of McIntyre *v.* United States, no. 22871; demurrer [and] brief. 1908. n. t. p. p. 31-35. †
- Opinions. [Official opinions of Attorneys-General.] 1906[1908]. n. t. p. v. 26, [signatures] 30-32, p. 465-512. †
- Register of Office of Attorney-General. July 20, 1908. 23 p. †
- Sevier, John. In Court of Claims, Emmetta Humphreys, administratrix of John Sevier and [his heir], John Sevier, jr., *v.* United States, no. 13325, Congressional; defendants' brief and request for findings of fact. [1908.] c. t. o. 49 p. †

Wells, Daniel. In Supreme Court, Oct. term 1907, United States *v.* Isaac Stephenson [et al.] executors of Wells; petition for writ of certiorari to circuit court of appeals, 7th circuit. [1908.] c. t. o. 2 p. ‡

ATTORNEY-GENERAL, ASSISTANT, FOR SPANISH TREATY CLAIMS COMMISSION

Before Spanish Treaty Claims Commission, Antonio Modesto Yznaga *v.* United States, statement of facts and brief for defendant, May 28, 1908. 1908. 80 p. large 8° ‡

LIBRARY OF CONGRESS

COPYRIGHT OFFICE

NOTE.—The bulletins of the Office are sent free on application to the Register of Copyrights. Subscriptions for the Catalogue of copyright entries should be sent to the Register of Copyrights, instead of to collectors of customs as formerly.

Catalogue of copyright entries; new series, v. 3, pts. 2-4, nos. 27-31, July, 1908. 1908. [Weekly. Each number issued in 4 parts: pt. 1, relates to books, dramatic compositions, maps and charts; pt. 2, to periodicals; pt. 3, to musical compositions; pt. 4, to engravings, cuts and prints, chromos and lithographs, photographs, fine arts.] † Paper, \$5.00 a yr.; pts. 1 and 3, each \$2.00 a yr.; pts. 2 and 4, each \$1.00 a yr. 6-35347/7

Same, v. 5, pt. 1, nos. 1-5; July 2-30, 1908. 1908. 6-35347/7

Copyright law of United States in force July 15, 1908; by Thorvald Solberg. [6th edition of] 6th edition. 1908. 30 p. l. 6a. (Bulletin 1.) * Paper, 5c. 3-33044-9/3

NAVY DEPARTMENT

General court-martial order 15, 16 [1908]; June 18, 25, 1908. [1908.] 12° ‡

General order 73, 74 [new series]; June 27, 1908. [1908.] 12° ‡

Special order 81-84 [new series]; June 27-July 3, 1908. [1908.] 12° ‡

Specifications for generating sets for ships of Navy. June, 1908. 14 p. 12° ‡

CONSTRUCTION AND REPAIR BUREAU

General instructions for painting and cementing vessels of Navy. Apr. 24, 1908. 54 p. 11 [22] il. 12°

EQUIPMENT BUREAU

Catalogue of ship's and crew's libraries of U. S. S. Yankee. June, 1908. 21 p. 12° ‡

HYDROGRAPHIC OFFICE

NOTE.—The charts, sailing directions, etc., of the Hydrographic Office are sold by the office in Washington and also by agents at the principal American and foreign seaports and American lake ports. The price of the Catalogue of charts, plans, sailing directions, and other publications is 50c. Copies of the Hydrographic bulletin and Notice to mariners are supplied free on application at the Hydrographic Office in Washington and at the branch offices in Boston, New York, Philadelphia, Baltimore, Norfolk, Savannah, New Orleans, San Francisco, Portland (Oreg.), Port Townsend, Chicago, Cleveland, Buffalo, Sault Ste. Marie, and Duluth.

Notice to mariners 27-30, 1908; July 4-25 [1908]. [1908.] [x]+ 404-479 l. [2] maps. [Weekly.] †

Charts

- Africa, West coast of, Cape St. Paul to Lagos River, from latest information; chart 2350. Scale 1° lat.=15.09 in. Washington, Hydrographic Office, June, 1908. 28.2×39.8 in. † 50c.
- Africa, West coast of, Forcados River to Opobo River, from latest information; chart 2352. Scale 1° lat.=15.05 in. Washington, Hydrographic Office, June, 1908. 30×41 in. † 60c.
- Amoy, China, east coast, from latest information; chart 1285. Scale naut. m.=6 in. Washington, Hydrographic Office, June, 1908. 27.4×21 in. † 30c.
- Atlantic Coast of United States, Halifax to New York, with southern part of Nova Scotia, from latest U. S. Coast and British Admiralty surveys; chart 941. Scale 1° long.=4.5 in. Washington, Hydrographic Office, June, 1908. 30.9×50.3 in. † 70c.
- Berry Islands. Southern portion of, Great Bahama Bank, W. I., from British survey in 1835; chart 2497. Scale naut. m.=1.1 in. Washington, Hydrographic Office, June, 1908. 14.5×17.4 in. † 10c.
- Formosa (Taiwan To), Northern part of, Auran Hakuchi to Soo Wan, from Japanese surveys in 1904-05, scale naut. m.=0.5 in; with inset, Chimmoo Wan and approaches, from Japanese survey in 1897, scale naut. m.=4.9 in.; chart 2500. Washington, Hydrographic Office, June, 1908. 25.7×38.6 in. † 40c.
- Malta Island, southeast part, Mediterranean Sea, from British surveys in 1860 and 1894; chart 2501. Scale naut. m.=4 in. Washington, Hydrographic Office, June, 1908. 39.6×26.3 in. † 50c.
- Masampo and Pu To Channel (Masampo Reach and Sir Harry Parkes Sound), Korea, southeast coast, from latest Japanese surveys; chart 2508. Scale naut. m.=3 in. Washington, Hydrographic Office, June, 1908. 39.4×26.3 in. † 50c.
- Moji and Shimonoseki Ko, Shimonoseki Strait, Japan, from Japanese survey in 1904; chart 2474. Scale 2000 yds.=7.88 in. Washington, Hydrographic Office, June, 1908. 26.7×19.5 in. † 20c.
- Mozambique Harbor, Portuguese State of East Africa, from latest British and Portuguese surveys, scale naut. m.=1.86 in.; with Enlarged plan of Mozambique Anchorage, scale naut. m.=3.61 in.; chart 2477. Washington, Hydrographic Office, June, 1908. 19.3×26.4 and 7.3×9.2 in. † 20c.
- Pelican Harbor, Little Bahama Bank, W. I., from British survey in 1883, scale naut. m.=3.925 in.; Great Abaco Island, southern extremity, Little Bahama Bank, W. I., from British surveys in 1836 and 1885, scale naut. m.=1 in.; chart 2499. Washington, Hydrographic Office, June, 1908. 27.2×22.3 in. † 30c.
- Pemba Island, Southwest coast of, Africa, east coast, from British surveys in 1878 and 1889, scale naut. m.=1.5 in.; with insets, Continuation of east coast, scale naut. m.=1.5 in.; Mchengan-gazi Passage, scale naut. m.=3 in.; chart 2503. Washington, Hydrographic Office, June, 1908. 33.1×27.1 , 6.9×6.3 , and 6.1×12 in. † 40c.
- Pescadores Islands (Hoko Retto), inner anchorages, Japan, from French survey in 1886, with additions from Japanese surveys in 1896 and 1900; chart 2506. Scale naut. m.=3.05 in. Washington, Hydrographic Office, June, 1908. 39.9×26.9 in. † 50c.
- Pilot chart of north Atlantic Ocean, July, 1908; chart 1400. Scale 1° long.=0.27 in. Washington, Hydrographic Office, June 30, 1908. 21×32 in. [Monthly.] † 10c.

NOTE.—Contains, on reverse, West India hurricanes.

Same, Aug. 1908; chart 1400. Scale 1° long.=0.27 in. Washington, Hydrographic Office, July 30, 1908. 21×32 in. [Monthly.] † 10c.

NOTE.—Contains, on reverse, West India hurricanes.

Pilot chart of north Pacific Ocean, Aug. 1908; chart 1401. Scale 1° long.=0.2 in. Washington, Hydrographic Office, July 7, 1908. 20.7×35.3 in. [Monthly.] † 10c.

NOTE.—Contains, on reverse, Wireless telegraph stations under Governmental administration.

Restigouche River, Gulf of St. Lawrence, from British survey in 1838, with corrections, July, 1907, scale naut. m.=2 in.; with insets, Heron Channel, Bay of Chaleurs, from British survey in 1839, scale naut. m.=1 in.; Paspebiac Bay, Bay of Chaleurs, from British survey in 1839, scale naut. m.=1.07 in.; chart 2496. Washington, Hydrographic Office, June, 1908. 26.4×39.7 , 5.6×6.8 , and 4.9×5.1 in. † 50c.

Valletta Harbors, Malta, Mediterranean Sea, from British surveys in 1852–87; chart 2466. Scale 1500 yds.=11.09 in. Washington, Hydrographic Office, June, 1908. 33.7×26.4 in. † 40c.

Weihaiwei Anchorage, coast of China, from British survey in 1898; chart 2502. Scale naut. m.=5.98 in. Washington, Hydrographic Office, June, 1908. 26.4×39.6 in. † 50c.

Zanzibar Harbor, Zanzibar Island, east coast of Africa, from British survey in 1900; chart 2510. Scale naut. m.=6 in. Washington, Hydrographic Office, June, 1908. 26.5×40 in. † 50c.

NAVIGATION BUREAU

Circular relating to enlistment of men for Navy. 1908. 16 p. 12° †

Movements of vessels, July 1–31, 1908. July 1–31, 1908. Each 1 p. 4° [Daily except Sundays and holidays.] †

Navy and Marine Corps list and directory, officers of Navy and Marine Corps, July 1, 1908. 1908. 71 p. [Monthly.]

* Paper, 10c. single copy, \$1.00 a yr.

NOTE.—With the beginning of this new monthly publication, the annual publication entitled List and station of commissioned and warrant officers of Navy and Marine Corps, commonly known as the July (not January) issue of the Navy register, has been discontinued, the last number having appeared under date of July 1, 1907, for which see Monthly catalogue for August, 1907, page 68.

Orders to officers, U. S. N., July 1–31, 1908. July 2–Aug. 1, 1908. Each 1 p. 4° [Daily except Sundays and holidays; none issued July 25.] †

SUPPLIES AND ACCOUNTS BUREAU

List of books and blanks furnished by Bureau. July 1, 1908. c. t. o. 10 p. †

Memoranda for information of officers of Pay Corps, commanding officers of ships, and commandants of stations 88; July 1, 1908. 1908. n. t. p. p. 729–776, 12° [Monthly.] †

Notice of purchases [of miscellaneous materials, etc.]; no. 111. July 11, 1908. [2] p. f° [Includes no. 112.] †

Same, 112. July 11, 1908. 1 p. f° †

POST-OFFICE DEPARTMENT

Appropriations for Department and postal service, 60th Congress, 1st session. 1908. 40 p. †

Chicago, Ill. Scheme of station separation and route distribution scheme for sec. 1–3, main office, and station U, Chicago; corrected to July 1, 1908. 1908. 10 p. l. $11-144$, 12° †

Parcels post. Parcel-post convention between United States and Uruguay; [signed Washington, Feb. 10, 1908, Montevideo, Apr. 26, 1908, approved June 5, 1908]. 1908. 12 p. [English and Spanish.] †

— Parcels post convention between United States and Italy; [signed and approved Washington, June 16, 1908]. 1908. 13 p. [English and Italian.] †

Postal guide. United States official postal guide [3d series, v. 1, no. 1]; July, 1908. Albany, N. Y., J. B. Lyon Company, printers [1908]. 714 p. 1 il. [Monthly.] Paper, \$3.00 a yr.

NOTE.—The July number of the United States official postal guide, which begins a new series, will hereafter be the annual issue known as the Postal guide instead of the January number as heretofore. The issue for each month except July will be a small pamphlet of additions and corrections similar to those heretofore issued. Sold by the printers, J. B. Lyon Company, Market Square, Albany.

Postal service. Daily bulletin of orders affecting postal service, v. 29, nos. 8641-66a; July 1-31, 1908. [1908.] f° [Daily except Sundays and holidays.] †

Reports. Annual reports, fiscal year 1907. 1907 [1908]. 397 p. 1 il.

* Cloth, 45c.

Richmond, Va. Scheme of city distribution for use in post-office at Richmond; corrected to Feb. 1, 1908. 1908. 2 p. l. 3-56, narrow 12° †

FOREIGN MAIL SERVICE

Schedule of steamers appointed to convey mails to foreign countries during Aug. 1908. July 17, 1908. 1 p. narrow f° [Monthly.]

* Paper, 10c. single copy, \$1.00 a yr.

RURAL DELIVERY DIVISION

Instructions for guidance of postmasters and carriers in conduct of rural delivery service, in effect Mar. 4, 1907. [1908.] 65 p. [From Supplement of 1907 to Postal laws and regulations, edition of 1902, Senate document 394, pt. 2, 59th Congress, 2d session.] †

PRESIDENT OF UNITED STATES

Bayard, Fort, N. Mex. Executive order [reserving portion of land north of fort, within limits of Gila national forest, for military purposes to protect water-supply of Fort Bayard]. July 23, 1908. 1 p. f° †

Gluck, Herman. Executive order [authorizing reinstatement of Gluck as deputy collector of internal revenue at New York]. July 16, 1908. 1 p. f° †

Grand Canyon national game preserve, Ariz. (2d proclamation). June 23, 1908. 1 p. map, f° †

Johnson, Joe M. Executive order [authorizing reinstatement of Johnson in Government Printing Office]. July 2, 1908. 1 p. f° †

Lowe, W. S. Executive order [authorizing appointment of Lowe, Grosvenor A. Porter, T. E. Brentz, and E. E. Kinnett as experts in suppression of liquor traffic among Indians]. July 16, 1908. 1 p. f° †

Marine Corps. Executive order [modifying Executive order of Sept. 18, 1906, concerning monthly pay of enlisted men in Marine Corps regularly detailed as messmen, by providing that marines must be under regular detail for whole month to be entitled to extra compensation]. July 21, 1908. 1 p. f° †

- National forests. Coconino national forest, Ariz. [to include and supersede San Francisco Mountains national forest and parts of Black Mesa, Tonto, and Grand Canyon national forests, with additions from public lands, remaining portion of Grand Canyon national forest, with exception of area to be restored to public domain, to constitute Kaibab national forest, and remaining portion of Black Mesa national forest to be included in Sitgreaves, Apache, and Tonto national forests], proclamation. [July 1, 1908.] [2] p. [2] maps, f° †
- Crook national forest, Ariz. [to include and supersede parts of Tonto and Mount Graham national forests, with addition of public lands not heretofore reserved, remaining portion of Mount Graham national forest not included in any other reservation or appropriation to be restored to public domain], proclamation. [July 1, 1908.] [2] p. map, f° †
- Datil national forest, N. Mex. [to include and supersede part of Gila national forest, with additions from public lands], proclamation. June 18, 1908. 1 p. map, f° †
- Executive order, Absaroka national forest, Mont. [to include and supersede Crazy Mountains national forest and part of Yellowstone national forest, remaining portions to constitute Shoshone, Teton, Bonneville, and Wyoming national forests, Wyo., part of Beartooth national forest, Mont., and part of Targhee national forest, Idaho and Wyo.]. July 1, 1908. 1 p. map, f° †
- Executive order, Angeles national forest, Cal. [to include and supersede San Bernardino national forest and parts of San Gabriel and Santa Barbara national forests, remaining portions of San Gabriel and Santa Barbara national forests to constitute parts of Santa Barbara national forest]. June 26, 1908. 1 p. map, f° †
- Executive order, Apache national forest, Ariz. [to include and supersede part of Black Mesa national forest, remaining portions to constitute Sitgreaves national forest and parts of Coconino and Tonto national forests]. July 1, 1908. 1 p. map, f° †
- Executive order, Arapaho national forest, Colo. [to include and supersede parts of Medicine Bow, Pikes Peak, and Leadville national forests]. July 1, 1908. 1 p. map, f° †
- Executive order, Battlement national forest, Colo. [to include and supersede part of Battlement Mesa national forest, remaining portion to constitute part of Holy Cross national forest]. July 1, 1908. 1 p. map, f° †
- Executive order, Beartooth national forest, Mont. [to include and supersede Pryor Mountains national forest and part of Yellowstone national forest, remaining part of Yellowstone national forest to constitute Shoshone, Teton, Bonneville, and Wyoming national forests, Wyo., part of Absaroka national forest, Mont., and part of Targhee national forest, Idaho and Wyo.]. June 30, 1908. 1 p. map, f° †
- Executive order, Beaverhead national forest, Mont. and Idaho [to include and supersede parts of Big Hole, Hell Gate, and Bitter Root national forests, remaining portion of Big Hole national forest to constitute parts of Deerlodge and Bitterroot national forests, Mont.]. July 1, 1908. 1 p. map, f° †
- Executive order, Boise national forest, Idaho [to include and supersede part of Sawtooth national forest]. June 26, 1908. 1 p. map, f° †

- National forests. Executive order, Bonneville national forest, Wyo. [to include and supersede part of Yellowstone national forest remaining portion to constitute Shoshone, Teton, and Wyoming national forests, Wyo., parts of Absaroka and Beartooth national forests, Mont., and part of Targhee national forest, Idaho and Wyo.] July 1, 1908. 1 p. map, f° ‡
- Executive order, Carson national forest, N. Mex. [to include and supersede Taos national forest and part of Jemez national forest]. June 26, 1908. 1 p. map, f° ‡
- Executive order, Challis national forest, Idaho [to include and supersede parts of Salmon River and Sawtooth national forests]. June 26, 1908. 1 p. map, f° ‡
- Executive order, Cheyenne national forest, Wyo. [to include and supersede Crow Creek national forest and part of Medicine Bow national forest, remaining portions of Medicine Bow national forest to constitute Medicine Bow national forest, Colo., and parts of Arapaho and Pike national forest, Colo.]. June 30, 1908. 1 p. map, f° ‡
- Executive order, Clearwater national forest, Idaho [to include and supersede parts of Coeur d'Alene and Bitter Root national forests]. June 26, 1908. 1 p. map, f° ‡
- Executive order, Cochetopa national forest, Colo. [to include and supersede parts of Cochetopah and Leadville national forests, remaining portions of Cochetopah national forest to constitute parts of Rio Grande, Gunnison, and Leadville national forests]. July 1, 1908. 1 p. map, f° ‡
- Executive order, Coeur d'Alene national forest, Idaho [to include and supersede Palouse national forest and part of land heretofore reserved as Coeur d'Alene national forest, remaining portion to constitute parts of Pend d'Oreille and Clearwater national forests]. June 26, 1908. 1 p. map, f° ‡
- Executive order, Columbia national forest, Wash. [to include and supersede part of Rainier national forest]. June 18, 1908. 1 p. map, f° ‡
- Executive order [consolidating certain national forests and changing names of several others]. [July 2, 1908.] [2] p. f° ‡
- Executive order, Crater national forest, Oreg. and Cal. [to include and supersede Ashland national forest and parts of Cascade and Siskiyou national forests, Oreg., and part of Klamath national forest, Cal. June 30, 1908. 1 p. map, f° ‡
- Executive order, Deerlodge national forest, Mont. [to include and supersede parts of Helena, Hell Gate, and Big Hole national forests, remaining portions of Helena national forest, not included in any other reservation or appropriation, to be restored to public domain]. July 1, 1908. 1 p. map, f° ‡
- Executive order, Hayden national forest, Wyo. and Colo. [to include and supersede Sierra Madre national forest and part of Park Range national forest, remaining portion to constitute Routt national forest]. June 25, 1908. 1 p. map, f° ‡
- Executive order, Kaibab national forest, Ariz. [to include and supersede part of Grand Canyon national forest, remaining portion, except area restored to public domain, to constitute part of Coconino national forest]. July 2, 1908. 1 p. map, f° ‡
- Executive order, Kaniksu national forest, Idaho and Wash. [to include and supersede part of Priest River national forest, remaining portion to constitute part of Pend d'Oreille national forest]. June 26, 1908. 1 p. map, f° ‡

- National forests. Executive order, Lemhi national forest, Idaho [to include and supersede part of Sawtooth national forest and part of land heretofore reserved as Lemhi national forest, remaining portions of Lemhi national forest to constitute part of Salmon national forest]. June 26, 1908. 1 p. map, f° ‡
- Executive order, Missoula national forest, Mont. [to include and supersede parts of Lewis and Clark and Hell Gate national forests, remaining portions of Lewis and Clark national forest to constitute portions of Blackfeet, Flathead, Lewis and Clark, and Kootenai national forests, and remaining portions of Hell Gate national forest to form parts of Bitterroot, Deerlodge, and Beaverhead national forests]. July 1, 1908. 1 p. map, f° ‡
- Executive order, Nebo national forest, Utah [to include and supersede Vernon and Payson national forests and part of Fillmore national forest, remaining portion to continue part of Fillmore national forest]. June 18, 1908. 1 p. map, f° ‡
- Executive order, Nezperce national forest, Idaho [to include and supersede parts of Bitter Root and Weiser national forests]. June 26, 1908. 1 p. map, f° ‡
- Executive order, Oregon national forest, Oreg. [to include and supersede Bull Run national forest and part of Cascade national forest, remaining portions to constitute Cascade national forest and parts of Umpqua and Crater national forests]. June 30, 1908. 1 p. map, f° ‡
- Executive order, Pend d'Oreille national forest, Idaho [to include and supersede parts of Priest River, Kootenai, Cabinet, and Coeur d'Alene national forests]. June 26, 1908. 1 p. map, f° ‡
- Executive order, Pike national forest, Colo. [to include and supersede parts of Pikes Peak and Medicine Bow national forests, remaining portions of Pikes Peak national forest to constitute parts of Arapaho and Leadville national forests]. July 1, 1908. 1 p. map, f° ‡
- Executive order, Rio Grande national forest, Colo. [to include and supersede parts of San Juan and Cochetopah national forests]. July 1, 1908. 1 p. map, f° ‡
- Executive order, Routt national forest, Colo. [to include and supersede part of Park Range national forest, remaining portion to constitute part of Hayden national forest]. June 25, 1908. 1 p. map, f° ‡
- Executive order, Salmon national forest, Idaho [to include and supersede parts of Salmon River, Bitter Root and Lemhi national forests, remaining portion of Salmon River national forest to constitute part of Challis national forest]. June 26, 1908. 1 p. map, f° ‡
- Executive order, San Luis national forest, Cal. [to include and supersede part of San Luis Obispo national forest, remaining portion to constitute part of Santa Barbara national forest]. June 26, 1908. 1 p. map, f° ‡
- Executive order, Shoshone national forest, Wyo. [to include and supersede part of Yellowstone national forest, remaining portions to constitute Teton, Bonneville, and Wyoming national forests, Wyo., parts of Absaroka and Beartooth national forests, Mont., and part of Targhee national forest, Idaho and Wyo.]. July 1, 1908. 1 p. map, f° ‡
- Executive order, Sitgreaves national forest, Ariz. [to include and supersede parts of Black Mesa and Tonto national forests, remaining portions of Black Mesa national forest to constitute Apache national forest and parts of Coconino and Tonto national forests]. July 1, 1908. 1 p. map, f° ‡

- National forests. Executive order, Siuslaw national forest, Oreg. [to include and supersede parts of Tillamook and Umpqua national forests, and restoring portions of Umpqua and Tillamook national forests to public domain]. June 30, 1908. 1 p. map, f° ‡
- Executive order, Snoqualmie national forest, Wash. [to include and supersede part of Washington national forest]. June 18, 1908. 1 p. map, f° ‡
- Executive order, Sundance national forest, Wyo. [to include and supersede Bear Lodge national forest and part of Black Hills national forest, remaining portion to constitute Black Hills national forest, S. Dak.]. June 26, 1908. 1 p. map, f° ‡
- Executive order, Targhee national forest, Idaho and Wyo. [to include and supersede Henrys Lake national forest and part of Yellowstone national forest, remaining portions to constitute Shoshone, Teton, Bonneville, and Wyoming national forests, Wyo., and parts of Absaroka and Beartooth national forests, Mont.]. July 1, 1908. 1 p. map, f° ‡
- Executive order, Teton national forest, Wyo. [to include and supersede part of Yellowstone national forest, remaining portion to constitute Shoshone, Bonneville, and Wyoming national forests, Wyo., parts of Absaroka and Beartooth national forests, Mont., and part of Targhee national forest, Idaho and Wyo.]. July 1, 1908. 1 p. map, f° ‡
- Executive order [that on and after July 1, 1908, land heretofore reserved as Coquille national forest, and parts of Siskiyou and Klamath national forest, shall be known as] Siskiyou national forest, Oreg. and Cal. [remaining portion of Siskiyou national forest to constitute part of Crater national forest]. June 30, 1908. 1 p. map, f° ‡
- Executive order [that on and after July 1, 1908, land heretofore reserved as Elkhorn national forest and parts of Helena and Big Belt national forests shall be known as] Helena national forest, Mont. [and restoring certain lands formerly included in Helena national forest to public domain. July 1, 1908. 1 p. map, f° ‡
- Executive order [that on and after July 1, 1908, land heretofore reserved as part of Black Hills national forest, shall be known as] Black Hills national forest, S. Dak. [remaining portion to constitute part of Sundance national forest, Wyo.]. June 26, 1908. 1 p. map, f° ‡
- Executive order [that on and after July 1, 1908, land heretofore reserved as part of] Cabinet national forest, Mont. [and Idaho, shall be known as Cabinet national forest, remaining portion to constitute parts of Kootenai national forest, Mont., and Pend d'Oreille national forest, Idaho]. June 25, 1908. 1 p. map, f° ‡
- Executive order [that on and after July 1, 1908, land heretofore reserved as parts of Cascade, Fremont, and Umpqua national forests shall be known as] Umpqua national forest, Oreg. [certain portions of present Umpqua national forest to constitute Siuslaw national forest, and remaining portions, not included in any other reservation or appropriation, to be restored to public domain]. June 30, 1908. 1 p. map, f° ‡
- Executive order [that on and after July 1, 1908, land heretofore reserved as parts of Gallatin, Big Belt, and Madison national forests shall be known as] Gallatin national forest, Mont. [remaining portion of Gallatin national forest to constitute part of Madison national forest]. July 1, 1908. 1 p. map, f° ‡

- National forests. Executive order [that on and after July 1, 1908, land heretofore reserved as parts of Gunnison, Leadville, and Cochetopah national forests shall be known as] Gunnison national forest, Colo. [remaining portions of Gunnison national forest to constitute parts of Holy Cross and Leadville national forests]. July 1, 1908. 1 p. map, f° ‡
- Executive order [that on and after July 1, 1908, land heretofore reserved as parts of Holy Cross, Leadville, Gunnison, and Battlement Mesa national forests shall be known as] Holy Cross national forest, Colo. [remaining portions of Holy Cross national forest to constitute part of Leadville national forest]. July 1, 1908. 1 p. map, f° ‡
- Executive order [that on and after July 1, 1908, land heretofore reserved as parts of Inyo and Sierra national forests shall be known as] Inyo national forest, Cal. and Nev. [remaining portions of Inyo national forest to constitute part of Mono national forest]. July 2, 1908. 1 p. map, f° ‡
- Executive order [that on and after July 1, 1908, land heretofore reserved as parts of Leadville, Pikes Peak, Gunnison, Cochetopah, and Holy Cross national forests shall be known as] Leadville national forest, Colo. [remaining portions of Leadville national forest to constitute parts of Arapaho, Cochetopah, Gunnison, and Holy Cross national forests]. July 1, 1908. 1 p. map, f° ‡
- Executive order [that on and after July 1, 1908, land heretofore reserved as parts of Madison and Gallatin national forests, shall be known as] Madison national forest, Mont. [remaining portion of Madison national forest to constitute part of Gallatin national forest]. July 1, 1908. 1 p. map, f° ‡
- Executive order [that on and after July 1, 1908, land heretofore reserved as parts of Montezuma and Ouray national forests shall be known as] Montezuma national forest, Colo. [and that certain portions of present Montezuma national forest shall constitute parts of San Juan and Uncompahgre national forests, remaining portions, not included in any other reservation or appropriation, to be restored to public domain]. July 1, 1908. 1 p. map, f° ‡
- Executive order [that on and after July 1, 1908, land heretofore reserved as parts of Payette, Weiser, and Sawtooth national forests, shall be known as] Payette national forest, Idaho [remaining portion of Payette national forest to constitute Idaho national forest]. June 26, 1908. 1 p. map, f° ‡
- Executive order [that on and after July 1, 1908, land heretofore reserved as parts of Rainier and Washington national forests shall be known as Rainier national forest, Wash., remaining portion of Rainier national forest to constitute Columbia national forest]. June 18, 1908. 1 p. map, f° ‡
- Executive order [that on and after July 1, 1908, land heretofore reserved as parts of San Juan and Montezuma national forests shall be known as] San Juan national forest, Colo. [remaining portion of San Juan national forest to constitute part of Rio Grande national forest]. July 1, 1908. 1 p. map, f° ‡
- Executive order [that on and after July 1, 1908, land heretofore reserved as parts of Santa Barbara, San Gabriel, and San Luis Obispo national forests, shall be known as Santa Barbara national forest, Cal., remaining portion of Santa Barbara national forest to constitute part of Angeles national forest]. June 26, 1908. 1 p. map, f° ‡

National forests. Executive order [that on and after July 1, 1908, land heretofore reserved as parts of Stanislaus and Sierra national forests shall be known as] Stanislaus national forest, Cal. [remaining portions of Stanislaus national forest to constitute parts of Tahoe and Mono national forests]. July 2, 1908. 1 p. map, f° ‡

— Executive order [that on and after July 1, 1908, land heretofore reserved as parts of Tahoe, Stanislaus, and Plumas national forests, shall be known as] Tahoe national forest, Cal. and Nev. [remaining portions of Tahoe national forest to constitute parts of Mono and Plumas national forests]. July 2, 1908. 1 p. map, f° ‡

— Executive order [that on and after July 1, 1908, land heretofore reserved as parts of Tonto and Black Mesa national forests, shall be known as Tonto national forest, Ariz., remaining portions of Tonto national forest to constitute parts of Crook, Sitgreaves, and Coconino national forests]. July 1, 1908. 1 p. map, f° ‡

— Executive order [that on and after July 1, 1908, land heretofore reserved as parts of Trinity, Shasta, Stony Creek, and Klamath national forests shall be known as] Trinity national forest, Cal. [remaining portion of Trinity national forest to constitute parts of Klamath and California national forests]. July 2, 1908. 1 p. map, f° ‡

— Executive order [that on and after July 1, 1908, part of Payette national forest shall constitute] Idaho national forest, Idaho. June 26, 1908. 1 p. map, f° ‡

— Executive order [that on and after July 1, 1908, part of] Weiser national forest, Idaho [shall constitute parts of Nezperce and Payette national forests]. June 26, 1908. 1 p. map, f° ‡

— Executive order [that on and after July 1, 1908, parts of Lewis and Clark national forest shall constitute Flathead and Blackfoot national forests and portions of Kootenai and Missoula national forests, Mont.]. June 25, 1908. 1 p. map, f° ‡

— Executive order [that on and after July 1, 1908, portion of] Cascade national forest, Oreg. [shall constitute parts of Oregon, Umpqua, and Crater national forests]. June 30, 1908. 1 p. map, f° ‡

— Executive order [that on and after July 1, 1908, portion of] Jemez national forest, N. Mex. [shall constitute part of Carson national forest]. June 26, 1908. 1 p. map, f° ‡

— Executive order [that on and after July 1, 1908, portion of] Lewis and Clark national forest, Mont. [shall constitute Flathead and Blackfoot national forests and parts of Kootenai and Missoula national forests]. June 25, 1908. 1 p. map, f° ‡

— Executive order [that on and after July 1, 1908, portion of] Medicine Bow national forest, Colo. [shall constitute parts of Cheyenne national forest, Wyo., and Arapaho and Pike national forests, Colo.]. June 30, 1908. 1 p. map, f° ‡

— Executive order [that on and after July 1, 1908, portion of] Sierra national forest shall constitute] Sequoia national forest, Cal. [and parts of Stanislaus, Inyo, and Mono national forests]. July 2, 1908. 1 p. map, f° ‡

— Executive order [that on and after July 1, 1908, portion of] Uinta national forest shall constitute] Ashley national forest, Utah and Wyo. [and adding certain lands not heretofore reserved to Uinta national forest]. July 1, 1908. 1 p. map, f° ‡

- National forests. Executive order [that on and after July 1, 1908, portions of] Sawtooth national forest, Idaho, [shall constitute parts of Boise, Challis, Lemhi, and Payette national forests]. June 26, 1908. 1 p. map, f° ‡
- Executive order, Uncompahgre national forest, Colo. [to include and supersede Fruita national forest and parts of Ouray and Montezuma national forests, remaining portion of Ouray national forest to constitute part of Montezuma national forest]. July 1, 1908. 1 p. map, f° ‡
- Executive order, Wenatchee national forest, Wash. [to include and supersede part of Washington national forest]. June 18, 1908. 1 p. map, f° ‡
- Executive order, Wyoming national forest, Wyo. [to include and supersede part of Yellowstone national forest, remaining portions to constitute Shoshone, Teton, and Bonneville national forests, Wyo., parts of Absaroka and Beartooth national forests, Mont., and part of Targhee national forest, Idaho and Wyo.]. July 1, 1908. 1 p. map, f° ‡
- Klamath national forest, Cal. [to include and supersede parts of Klamath, Trinity, and Shasta national forests, with lands not heretofore reserved, remaining portions of Klamath national forest to constitute parts of Siskiyou, Crater, Trinity, and Shasta national forests] 2d proclamation. July 2, 1908. 1 p. map, f° ‡
- Uinta national forest, Utah (6th proclamation). July 1, 1908. 1 p. map, f° ‡
- Tanana, Alaska. Executive order [reserving certain lands at Tanana, adjoining Fort Gibbon, Alaska, as military reservation for use of Signal Corps]. July 25, 1908. 1 p. f° ‡
- Shields, William E. Executive order [authorizing reinstatement of Shields in Government Printing Office]. July 18, 1908. 1 p. f° ‡
- Terwilliger, George. Executive order [authorizing reinstatement of Terwilliger in Government Printing Office]. July 16, 1908. 1 p. f° ‡
- Uhler, George. Executive order [authorizing Uhler to act as supervising inspector of steam vessels, 7th district, Steamboat-Inspection Service, Cincinnati, Ohio]. July 3, 1908. 1 p. f° ‡

SMITHSONIAN INSTITUTION

NOTE.—In its latest price-list the Smithsonian Institution publishes this note: "The publications of the Smithsonian Institution are: 1. Contributions to knowledge; 2. Miscellaneous collections; 3. annual reports; 4. special publications. No sets of these are for sale or distribution, as most of the volumes are out of print. The volumes of Contributions and of Miscellaneous collections are distributed only to public libraries and to learned institutions and societies in this country and abroad. A small edition of the papers in these two series is printed separately for sale or exchange. The Smithsonian reports are regularly distributed by the Institution to libraries throughout the world, and only a limited number of the volumes remains to supply demands from other sources. No general mailing-list of individuals is maintained. The reports can be had by purchase from the Superintendent of Documents, Washington, D. C. The papers printed in the annual reports are published separately for free distribution. Publications should be ordered by the serial number. Remittances should be made payable to 'Smithsonian Institution.' An application from a library should state the number of volumes in the library and the date of establishment, and have the endorsement of a Member of Congress." The annual reports are the only Smithsonian publications that are regularly issued as public documents. All the others are paid for from the private funds of the Institution.

International catalogue of scientific literature, [and] Regional Bureau for United States [circular]. 1908. c. t. o. 3 p. 24° ‡

Notes [including Publications of Institution continued from list in quarterly issue, v. 4, pt. 4]. June 30, 1908. n. t. p. p. 117-119. ([Publication] 1802.) [From Smithsonian miscellaneous collections, v. 52.] †

Smithsonian miscellaneous collections, quarterly issue, v. 5, pt. 1. Washington, Smithsonian Institution, 1908. c. t. o. p. 1-119, 39 il. 8 pl. ([Publication] 1792.) [Part of Smithsonian miscellaneous collections, v. 52.] † Paper, 50c.

CONTENTS.—Cretaceous fishes of Ceará, Brazil [with bibliography]; by David Starr Jordan and John Casper Branner.—Observation of total solar eclipse of Jan. 3, 1908, bolometric study of solar corona; by C. G. Abbot.—Report on trip for purpose of studying mosquito fauna of Panama; by August Busck.—Carl Ludwig Romlizer [with bibliography of his works]; by George P. Merrill.—Edward Travers Cox; by George P. Merrill.—Apparently new protoblatrid family from lower cretaceous; by Evelyn Groesbeck Mitchell.—Necessary changes in nomenclature of starfishes; by Walter K. Fisher.—Identity of supposed whitefish, *Coregonus angusticeps* Cuvier & Valenciennes, with northern cyprinid, *Platygobio gracilis* (Richardson); by William Converse Kendall.—Millers-thumb and its habits; by Theodore Gill.—Notes [including Publications of Institution continued from list in quarterly issue, v. 4, pt. 4].

ASTROPHYSICAL OBSERVATORY

Addenda to Annals, v. 2: Note on reflecting power of clouds; by C. G. Abbot and F. E. Fowle, jr. [May 27, 1908.] n. t. p. 3 p. †

NATIONAL MUSEUM

NOTE.—The publications of the National Museum comprise bulletins, annual reports, and an annual volume of Proceedings. The annual report is included in the Congressional set. The editions of the bulletins and Proceedings are too limited to admit of general distribution, and the volumes of the latter are sent only to libraries.

Decorative designs of Alaskan needlecases, study in history of conventional designs, based on materials in Museum; by Franz Boas. July 15, 1908. [1] + 321-344 p. 16 il. [9] pl. [From Proceedings, v. 34; no. 1616.] †

On collection of feather stars, or comatulids, from Japan; by Austin Hobart Clark. July 15, 1908. [1] + 305-319 p. [From Proceedings, v. 34; no. 1615.] †

On some new and old species of carboniferous fossils; by George H. Girty. July 14, 1908. [1] + 281-303 p. [8] pl. [From Proceedings, v. 34; no. 1614.] †

STATE DEPARTMENT

Commercial law. *Leyes comerciales y marítimas de la América Latina comparadas entre sí y con los códigos de España y las leyes de los Estados Unidos de América*, profusamente anotadas con la legislación de España y con la jurisprudencia extranjera; por Clifford Stevens Walton. 1907 [1908]. 5 v. * Cloth, v. 1 and 2 each \$1.00; v. 3, \$1.20; v. 4 and 5 each 75c.

8—35617

v. 1. De los comerciantes y de los actos de comercio.

v. 2. De los contratos especiales del comercio.

v. 3. Parte marítima.

v. 4. De las quiebras.

v. 5. Los apéndices; La tabla de las materias; El índice alfabético.

Diplomatic list, July, 1908. [1908.] c. t. o. 16 p. 24° [Monthly.] †

Great Britain. Treaty between United States and Great Britain, Canadian international boundary; signed Washington, Apr. 11, 1908, proclaimed July 1, 1908. 1908. 15 p. †

8—35566

- Great Britain. Treaty between United States and Great Britain, fisheries in United States and Canada waters; signed Washington, Apr. 11, 1908, proclaimed July 1, 1908. 1908. 5 p. †
8—35567
- Treaty between United States and Great Britain, reciprocal rights for United States and Canada in matters of conveyance of prisoners and wrecking and salvage; signed Washington, May 18, 1903, proclaimed July 10, 1903. 1903. 5 p. †
8—35596
- Mexico. Convention between United States and Mexico, arbitration; signed Washington, Mar. 24, 1908, proclaimed June 29, 1908. 1908. 5 p. [English and Spanish.] † 8—35597
- Norway. Convention between United States and Norway, arbitration; signed Washington, Apr. 4, 1908, proclaimed June 29, 1908. 1908. 5 p. [English and Norwegian.] † 8—35598
- Uruguay. Treaty between United States and Uruguay, extradition; signed Washington, Mar. 11, 1905, proclaimed July 10, 1908. 1908. 10 p. [English and Spanish.] †

SUPREME COURT

- Transcript of record, Oct. term, 1908, no. 246, James Rudolph Garfield, Secretary of Interior, vs. United States ex relatione Belle Frost, in error to Court of Appeals, District of Columbia. [1908.] c. t. o. ii+35 p. †
- Transcript of record, Oct. term, 1908, no. 310, United States vs. K. P. Plowman, in error to circuit court of appeals, 9th circuit. [1908.] c. t. o. ii+62 p. †
- Transcript of record, Oct. term, 1908, no. 338, United States vs. Union Supply Company, in error to district court of New Jersey. [1908.] c. t. o. i+11 p. †
- Transcript of record, Oct. term, 1908, no. 362, United States vs. John W. Dickinson, on writ of certiorari to circuit court of appeals, 1st circuit. [1908.] c. t. o. ii+191 p. †
- Transcript of record, Oct. term, 1908, no. 376, United States vs. Cora Welch, et al., in error to circuit court for eastern district of Kentucky. [1908.] c. t. o. ii+20 p. †
- Transcript of record, Oct. term, 1908, no. 394, United States vs. Charles R. Evans and Harry J. O'Donnell, on writ of certiorari to Court of Appeals, District of Columbia. [1908.] c. t. o. ii+45 p. †
- Transcript of record, Oct. term, 1908, no. 436, United States vs. Edwin E. Marvin, appeal from Court of Claims. [1908.] c. t. o. [1]+5 p. †

TREASURY DEPARTMENT

- Animals. Importation of animals for breeding purposes. July 9, 1908. 1 p. 4° (Dept. circular 53, 1908; Division of Customs.) †
- Appeals pending before United States courts in customs cases, no. 21; July 1, 1908. 1908. 88 p. [Quarterly.] †
- Baggage. Notice to passengers [relative to making declaration, under oath, before customs officer]. [Revised edition.] [July 31, 1907, published 1908.] n. t. p. 4 p. narrow 12° †
- Coins. Values of foreign coins. July 1, 1908. 1 p. 4° (Dept. circular 48, 1908; Director of Mint.) [Quarterly.] †

- Customs Service. Changes in general catalogue of customs books and blanks. July 1, 1908. n. t. p. 5 p. 4° (Dept. circular 50, 1908; Division of Printing and Stationery.) †
- Small frontier importations valued at \$10 or less admitted without formal entry. July 8, 1908. 1 p. ([Treasury decision] 29146.) [From Treasury decisions, v. 16, no. 3.] †
- Incandescent lamps. Specifications and proposals for electric lamps. [Edition] July 9, 1908. 1908. 12 l. 4° †
- Leaves of absence. Regulations relative to leaves of absence, and recording and reporting absence of clerks and employees in Department. July 7, 1908. n. t. p. 4 p. 4° (Dept. circular 52, 1908; Division of Appointments.) †
- Parcels-post convention with Italy. July 23, 1908. 1 p. 4° (Dept. circular 57, 1908; Division of Customs.) †
- Parcels-post convention with Netherlands. July 1, 1908. 1 p. 4° (Dept. circular 51, 1908; Division of Customs.) †
- Printing. Rush printing to be avoided. July 14, 1908. 1 p. 4° (Dept. circular 55, 1908; Division of Printing and Stationery.) †
- Public debt. Statement of public debt and cash in Treasury, June, 1908. July 1, 1908. 1 p. f° [Monthly.] †
- Public Health and Marine-Hospital Service. Amendments to regulations of Service. July 14, 1908. 1 p. 4° (Dept. circular 54, 1908; Bureau of [Public Health and Marine-Hospital Service].) †
- Report. Annual report of Secretary on state of finances [with tables and reports of heads of bureaus], fiscal year 1907. 1907 [1908]. xii+500 p. (Treas. Dept. doc. 2475.) * Cloth, 55c.
- Seals. Corporate seals impressed on wafer, wafer seals on which regular corporate seal has been impressed may be accepted for 30 days. July 6, 1908. ([Treasury decision] 29135.) [From Treasury decisions, v. 16, no. 2.] †
- Rubber stamp facsimile of corporate seals. July 3, 1908. 1 p. ([Treasury decision] 29134.) [From Treasury decisions, v. 16, no. 2.] †
- Size of corporate seals, impression seals, being exact reproductions of corporate seal and differing from it in size only, may be accepted. July 3, 1908. 1 p. ([Treasury decision] 29133.) [From Treasury decisions, v. 16, no. 2.] †
- Treasury decisions. Semiannual index to Treasury decisions under customs and other laws, v. 15, Jan.-June, 1908. 1908. 73 p. †
- Treasury decisions under customs, internal revenue, and other laws, weekly, v. 16, nos. 1-5; July 2-30, 1908. [1908.] †

APPOINTMENTS DIVISION

- Surety companies, authorized under act of Aug. 13, 1894, to be accepted as sureties on Federal bonds, limit for which they may be accepted on any one bond, and judicial districts in which they have appointed process agents; revised to June 30, 1908. [Edition] July 3, 1908. June 30, 1908. 1 p. oblong large 8° †

APPRAISERS

- Reappraisements of merchandise by general appraisers [on June 24-July 22, 1908]; July 6-27, 1908. 1908. 4° (Reappraisal circulars 1835-44.) [Weekly.] †

AUDITOR FOR POST-OFFICE DEPARTMENT

[Circular] inviting proposals for money order file cases. July 18, 1908. 2 p. 4° †

BOOKKEEPING AND WARRANTS DIVISION

Comparative statement of receipts and expenditures of United States [for month and 12 months ending June, 1907 and 1908]. July 1, 1908. 1 p. oblong 8° [Monthly.] †

Statement of Treasury, July 2-31, 1908. [1908.] Each 2 l. 4° [Daily except Sundays and holidays; none issued July 1.] †

COMPTROLLER OF CURRENCY

Bulletin 794-797, July 6-27, 1908; changes in officers and reserve agents of national banks, etc. [1908.] 4° [Weekly.] †

Organization of national banks. July 1, 1908. n. t. p. 4 p. 4° †

Statement showing amount and denominations of national bank notes outstanding, amount of lawful money on deposit to redeem national bank notes, and kinds and amounts of U. S. bonds on deposit to secure circulation and public deposits on June 30, 1908, with changes during preceding year and month. June 30, 1908. 1 p. oblong 8° †

COMPTROLLER OF TREASURY

Treasury bookkeeping. July 14, 1908. n. t. p. 7 p. 4° (Treasury Dept. Dept. circular 56, 1908.) †

GOVERNMENT ACTUARY

Market prices and investment values of outstanding securities [June, 1908]. July 1, 1908. 2 p. 4° (Treasury Dept. Dept. circular 49, 1908.) †

INTERNAL REVENUE COMMISSIONER

Distillery warehouses. List of distillery warehouses in United States in which distilled spirits were held on deposit at beginning of distiller's bonded year, May 1, 1908. June 3, 1908. 18 p. †

Guaranty companies. Instructions relative to preparation of bonds executed by guarantee or surety companies. June 24, 1908. 2 p. ([Treasury decision] 1382.) [From Treasury decisions, v. 16, no. 1.] †

Medicine. Additional list of alcoholic medicinal preparations for sale of which special tax is required. July 1, 1908. 2 p. 4° (Circular 727.) †

Report. Annual report [with tables], fiscal year 1907. 1907 [1908]. viii+219 p. (Treas. Dept. doc. 2489.) *Cloth, 35c.

Spirits. Marking packages of distilled spirits. July 6, 1908. 1 p. 4° (Circular 728.) †

Tobacco. Instructions to dealers in leaf tobacco as to proper method of keeping book 59, and return of such books to collectors. July 14, 1908. 2 p. 4° (Circular 729.) †

Transportation. Shipment of Government property. July 2, 1908. 1 p. ([Treasury decision] 1386.) [From Treasury decisions, v. 16, no. 2.] †

Wine. Regulations governing withdrawal of wine spirits or grape brandy from distilleries and special bonded warehouses, free of tax, for fortification of pure sweet wines. May 16, 1908. 91 p. (Regulations no. 28 revised.) †

LOANS AND CURRENCY DIVISION

Caveat list of United States registered bonds. July 1, 1908. [1908.] 1 p. f° [Monthly.] †

Circulation statement, July 1, 1908. July 1, 1908. 1 p. oblong 8° [Monthly.] †

MINT BUREAU

Revised table of charges at mints and assay offices of United States. to take effect July 10, 1908. July 6, 1908. [2] p. †

PUBLIC HEALTH AND MARINE-HOSPITAL SERVICE

Danger and prevention of tetanus from 4th of July wounds; by John F. Anderson. June 19, 1908. 7 p. [From Public health reports, v. 23, no. 25.] †

List of changes of station and duties of commissioned and noncommissioned officers, July 1-20, 1908. [1908.] 4° [Weekly.] †

Public health reports, v. 23, nos. 27-31; July 3-31, 1908. 1908. [xx]+949-1125 p. [Weekly.] † 6-25167/2

NOTE.—This publication is for gratuitous distribution, but the edition is limited, and the document is intended only for health officers and other persons interested in sanitary affairs. To obtain it application should be made to the Surgeon-General of the Public Health and Marine-Hospital Service, Treasury Department.

HYGIENIC LABORATORY

Index-catalogue of medical and veterinary zoology, subjects, Trematoda and trematode diseases [with bibliographies]; by Ch. Wardell Stiles and Albert Hassall. June, 1908. 401 p. (Bulletin 37.) * Paper, 30c. 5-13711

Same. (H. doc. 841.)

SECRET SERVICE DIVISION

New counterfeit \$5 national bank note. July 3, 1908. 1 p. 4° (Circular letter 277.) †

TREASURER OF UNITED STATES

Monthly statement, paper currency of each denomination outstanding June 30, 1908. July 1, 1908. 1 p. oblong 24° †

Statement of funded indebtedness of District of Columbia and late corporation of Washington, [by] ex-officio commissioner of sinking fund of District, June 30, 1908. [1908.] 1 p. oblong 8° [Quarterly.] †

Weekly statement of bonds held in trust for national banks; July 6-25, 1908. [1908.] Each 1 p. oblong 24° †

WAR DEPARTMENT

ADJUTANT-GENERAL'S DEPARTMENT

Army list and directory, officers of Army, July 20, 1908; [no. 104]. 1908. 113 p. large 8° [Monthly.]

* Paper, 15c. single copy, \$1.50 a yr.

- Recruiting for Army, June, 1908. [July 15, 1908.] n. t. p. 19 p.
12° [Monthly.] ‡
- Stations of Army, June 30, 1908. [1908.] [2] p. oblong 8°
[Monthly.] ‡

CALIFORNIA, DEPARTMENT OF

- Roster of troops. n. p. July, 1908. 13 p. 12° † Headquarters
Department of California, Chronicle Building, San Francisco,
Cal.

TEXAS, DEPARTMENT OF

- Roster of troops; [no. 2, 1908]. [San Antonio, Tex.] July, 1908.
[1]+12 p. 12° † Headquarters Department of Texas, San
Antonio, Tex.

ENGINEER DEPARTMENT

- General orders 7, 8 [1908]; July 1, 8, 1908. [1908.] Each 1 p.
12° ‡
- Report of chief, [with appendixes, fiscal year] 1907. 1907 [1908].
pt. 1, [1]+1-982+1x p. (War Dept. doc. 305 [pt. 1];
H. doc. 26 [pt. 1].) ‡
- Special orders 21-27 [1908]; July 6-29, 1908. [1908.] Each 1 p.
12° ‡
- Statement showing rank, duties, and addresses of officers of Corps
of Engineers.. July 1, 1908. 31 p. 4° [Quarterly.] ‡

Maps

- Outline map of United States and Territories, showing tonnage of
navigable rivers, compiled from annual report, 1907. Scale
50 m.=1 in. [Detroit, Mich., Engineer Department, 1908.]
2 sheets, each 38.8 × 31.7 in. ‡

ENGINEER SCHOOL

- Riparian rights, navigable waters in United States, decisions; [com-
piled by Logan McKee]. Washington Barracks, D. C., Press
of Engineer School, 1908. [1]+141 p. (Occasional papers
29.) ‡ War 8-102/3

NORTHERN AND NORTHWESTERN LAKES SURVEY

NOTE.—Lake Survey charts may be obtained from U. S. Lake Sur-
vey Office, Detroit, Mich. or from U. S. Engineer Office, Buffalo, N. Y.
Payments must be made before charts are sent, and if made by mail
must be by postal or express money order payable to the order of U. S.
Lake Survey Office if ordered from Detroit, or to the order of U. S.
Engineer Office if ordered from Buffalo. These charts may also be
obtained, for cash only, at U. S. Canal Office at Sault Ste. Marie, Mich.
They will be sent by express, the express charges to be paid by the
purchaser on receipt of the charts, or free by mail at the purchaser's
risk. Purchasers should indicate, when ordering the charts, whether
they wish them sent by express or mail. The latter will be used when
no choice is indicated.

The bulletins and supplements of the Lake Survey may be obtained
free upon application at U. S. Lake Survey Office, Detroit, Mich., and
at the engineer offices in Duluth, Milwaukee, Chicago, Grand Rapids,
Cleveland, Buffalo, and Oswego.

- Supplement 3, 1908, corrections and additions to bulletin 18; to sup-
plement information given upon charts of Great Lakes. U. S.
Lake Survey Office, Detroit, Mich., [July 24] 1908. 11 l. map,
4° ‡

INSULAR AFFAIRS BUREAU

7th annual report of Philippine Bureau of Civil Service for year ended June 30, 1907. 1908. iii+117-171 p. †

ISTHMIAN CANAL COMMISSION, 1904-

Manual of information concerning employments for service on Isthmus of Panama. Revised, June 29, 1908. 1908. 30 p. [2] maps. † 8-35076/3

[Proposals for supplies.] [1908.] 1 p. 32° †

CANAL ZONE, ISTHMUS OF PANAMA

Canal record, July 1-29, 1908; v. 1, nos. 44-48. Ancon, Canal Zone [1908]. 1 il. [Weekly.] 7-35328/3

NOTE.—The Canal record is issued free of charge, one copy each, to all employees of the Commission whose names are on the gold roll. Extra copies can be obtained from the news stands of the Panama Railway Company for 5c. each. Address all communications to The Canal Record, Ancon, Canal Zone, Isthmus of Panama.

Report of Department of Sanitation of Isthmian Canal Commission, May, 1908. 1908. 67 p. 12° [Monthly.] † 6-13939/3

MEDICAL DEPARTMENT

Specifications for plumbing and electric wiring in isolation hospital at Fort Slocum, N. Y. June, 1908. 8 p. 12° †

Specifications for plumbing, gas piping, and electric wiring required in addition to post hospital at Fort Sheridan, Ill. 1908. 11 p. 12° †

Specifications of material and labor required in construction of addition to post hospital at Fort Brady, Mich. June, 1908. 28 p. 12° †

Specifications of material and labor required in construction of addition to post hospital at Fort Sheridan, Ill. 1908. 39 p. 12° †

Specifications of material and labor required in construction of isolation hospital at Fort Slocum, N. Y. June, 1908. 33 p. 12° †

Specifications of material and labor required in construction of 1 double set of Hospital Corps sergeants' quarters at Fort Slocum, N. Y. June, 1908. 27 p. 12° †

ORDNANCE DEPARTMENT

Alcohol. Instructions to bidders and specifications governing test and inspection of alcohol for use in manufacture of smokeless powder for cannon. Apr. 10, 1905, revised May 19, 1908. 1908. 7 p. 12° †

Fuzes for use in mountain, field, siege, and seacoast projectiles and in detonating fuzes. Nov. 26, 1904, revised Apr. 28, 1908. 1908. 29 p. 15 pl. †

Gun making in United States, by Rogers Birnie, jr.; reprinted from Journal of Military Service Institution, with corrections. 1907 [1908]. 144 p. [5] il. 1 pl. (War Dept. doc. 298.) † War 8-101/3

Gun mounts. Instructions for mounting, using, and caring for 6-pounder R. F. guns and parapet mounts. June 4, 1903, revised Feb. 6, 1908. 1908. 36 p. 8 pl. † War 8-153/2

- Gun mounts. Instructions to bidders and special specifications governing manufacture of 12-inch mortar carriages, model of 1896 M2. Nov. 20, 1905, revised May 19, 1908. 1908. 11 p. 12° ‡
War 8—83/2
- Special specifications governing manufacture of caliber .30 automatic machine guns and tripods, model of 1904, and wheeled mounts, model of 1905. Aug. 15, 1905, revised May 29, 1908. 1908. 37 p. 12° ‡
- Special specifications governing manufacture of 3-inch field gun carriages, limbers, and caissons, model of 1902. Nov. 1, 1902, revised May 21, 1908. 1908. 34 p. 12° ‡
- Special specifications governing manufacture of 12-inch mortar carriages, model of 1908. July 2, 1908. 7 p. 12° ‡
- Ordnance orders 7, 8 [1908]; June 6, July 1, 1908. [1908.] 12° ‡
- Projectiles. Instructions to bidders and specifications governing manufacture and inspection of projectiles. Feb. 1, 1905, revised Apr. 30, 1908. 1908. 44 p. 3 pl. 12° ‡
- Range-finding. Description of Pratt range board, model of 1905, mechanical features and rules governing its care and preservation in service. May 20, 1908. 8 p. 2 pl. ‡

PAY DEPARTMENT

- Manual amendment circular 2; June 26, 1908. [1908.] n. t. p. 20 l. [Amendments to Manual for Pay Department, 1907.] ‡
- Monthly station list of officers, July 1, 1908. [1908.] n. t. p. 6 p. ‡
- Stoppage circular, July 15, 1908. [1908.] 2 p. [Monthly.] ‡

QUARTERMASTER'S DEPARTMENT

- Circular 13-17 [1908]; June 29-July 14, 1908. [1908.] 12° ‡
- Roster showing stations and duties of officers, July 1, 1908. [July 1, 1908.] n. t. p. 15 p. [Monthly.] ‡
- Specifications for hot-water heating isolation hospital at Fort Slocum, N. Y. June, 1908. 12 p. 12° ‡
- Specifications for steam heating in addition to post hospital at Fort Sheridan, Ill. 1908. 9 p. 12° ‡

SIGNAL OFFICE

- Circular 10 [1908]; July 18, 1908. [1908.] 1 p. 12° ‡
- Orders 13, 14 [1908]; July 1, 18, 1908. [1908.] Each 1 p. 12° [Semimonthly.] ‡

STAFF CORPS, GENERAL

- Memorandum [assignment of officers of War Department General Staff]. June 27, 1908. n. t. p. 3 p. 12° ‡
- Memorandum [distribution of business of War Department General Staff]. June 27, 1908. 2 p. 12° ‡

SUBSISTENCE DEPARTMENT

- Roster [of officers], July 1, 1908. [1908.] n. t. p. 3 p. [Monthly.] ‡

