

No. 107

November, 1903

CATALOGUE

OF

United States

Public Documents

Issued Monthly

BY THE

SUPERINTENDENT OF DOCUMENTS

Government Printing Office

Washington
Government Printing Office

1903

Table of Contents

	Page		Page
General Information.....	417	Navy Department.....	428
Congress of United States.....	419	Post-Office Department.....	430
Public laws.....	419	State Department.....	431
Senate.....	419	Treasury Department.....	433
House.....	420	War Department.....	434
Sheep-bound Reserve.....	421	Courts of United States.....	441
President of United States.....	421	District of Columbia.....	441
Agriculture, Department of.....	421	Smithsonian Institution.....	442
Commerce and Labor Department.....	423	Various Bureaus.....	442
Interior Department.....	426	Shipments to Depositories.....	445
Justice, Department of.....	428	Index.....	1

Abbreviations Used in this Catalogue

Academy.....	acad.	Mile, miles.....	m.
Agricultural.....	agric.	Miscellaneous.....	misc.
Amendments.....	amdt.	Nautical.....	naut.
American.....	Amer.	Number, numbers.....	no., nos.
Appendix.....	app.	Octavo.....	8°
Association.....	assoc.	Page, pages.....	p., pp.
Board.....	bd.	Part, parts.....	pt., pts.
College.....	coll.	Plate, plates.....	pl.
Commission.....	comm.	Portrait, portraits.....	por.
Committee.....	com.	Public.....	pub.
Congress.....	Cong.	Quarto.....	4°
Consular.....	cons.	Railway.....	ry.
Department.....	dept.	Report.....	rp.
Document.....	doc.	Resolution.....	res.
Executive.....	ex.	Secretary.....	secy.
Exposition.....	expos.	Section, sections.....	sec.
Facsimile, facsimiles.....	facsim.	Senate bill.....	S.
Folio.....	f°	Senate concurrent resolution.....	S. C. R.
General.....	gen.	Senate document.....	S. doc.
Geologic.....	geol.	Senate joint resolution.....	S. J. R.
Government.....	Govt.	Senate report.....	S. rp.
Historical.....	hist.	Senate resolution (simple).....	S. R.
House bill.....	H.	Session.....	sess.
House concurrent resolution.....	H. C. R.	Sixteenmo.....	16°
House document.....	H. doc.	Society.....	soc.
House joint resolution.....	H. J. R.	Superintendent.....	supt.
House report.....	H. rp.	Table, tables.....	tab.
House resolution (simple).....	H. R.	Thirtytwo-mo.....	32°
Hydrographic Office.....	H. O.	Treasury.....	Treas.
Illustrated, illustration, illustrations.....	il.	Twelvemo.....	12°
Inch, inches.....	in.	Twentyfour-mo.....	24°
Institute, institution.....	inst.	University.....	univ.
Latitude.....	lat.	Versus.....	vs., v.
Leaf, leaves.....	l.	Volume, volumes.....	v.
Library.....	L.	Year.....	yr.
Longitude.....	long.		

Explanation

Words and figures inclosed in brackets [] are given for information, but do not appear on the title-pages of the publications catalogued. When size is not given, octavo is to be understood. Size of maps is measured from outer edge of border, excluding margin. The dates, including day, month, and year, given with Senate and House documents and reports, are the dates on which they were ordered to be printed. Usually the printing promptly follows the ordering, but various causes sometimes make delays.

General Information

With Reference to the Distribution of Documents

NOTE TO LIBRARIANS

Librarians receiving the monthly catalogue will please notify the Superintendent of Documents of any change in name or address.

CATALOGUE DISTRIBUTION

The monthly catalogue is now sent to each Senator, Representative, Delegate, and officer in Congress, to each State and Territorial library and designated depository, to substantially all Government authors, and to as many school, college, and public libraries as the limited edition will supply. Individuals may obtain it by subscription at \$1.10 a year, subscription to begin with the number following receipt of remittance. Back numbers can not be supplied.

DISTRIBUTION TO LIBRARIES AND INDIVIDUALS

The Superintendent of Documents is not authorized to supply documents free to individuals, except publications specifically authorized by Congress to be distributed by him to persons designated by Senators, Representatives, or Delegates.

The Superintendent of Documents will receive documents from libraries that have them in duplicate, and will redistribute the same to other libraries to complete broken sets therein, or to libraries that have no Government publications.

In making application for documents librarians should state clearly what is desired, and certify whether the documents asked for are for the purpose of making up deficiencies, or the creation of a document library.

In no case will documents be supplied to a library unless it has a permanent organization and, if not a designated depository, the indorsement of the Representative in Congress from the district in which located.

Documents authorized by law to be distributed to designated depository libraries will be forwarded by registered mail as soon as received from the Government Printing Office. A list of documents forwarded this month is given herein.

INDEX

The index to the monthly catalogue is cumulative from January to June, and from July to November. The December number will contain an index to the twelve numbers for the year. Persons desiring to bind the catalogue at the end of the year should be careful to retain the numbers received monthly, as duplicate numbers can not be supplied.

SALES

The Superintendent of Documents is authorized to sell at cost any public document in his charge the distribution of which is not otherwise provided for. Only one copy is permitted to be sold to the same person, excepting libraries or schools and Members of Congress.

Price-lists of documents available for sale by the Superintendent of Documents will be supplied free on application in person or by mail.

PRICES

Documents entered in this catalogue that are for sale by the Superintendent of Documents are indicated by a (*) preceding the price named. The absence of a (*) indicates that application should be made to the Department, bureau, or division issuing the document.

HOW TO REMIT

Remittances may be made to the Superintendent of Documents, Union Building, Washington, D. C., by postal money order, express order, or New York draft. *Stamps* and *personal checks* will positively not be accepted. Remittances in coin or bills will be at sender's risk.

Remittances to the Public Printer should be made by postal money order, express money order, or draft on New York. Remittances to the Geological Survey should be made by money order. The Record and Pension Office will receive currency as well as postal money orders if the exact amount be sent.

The Hydrographic Office sells for 50c its "Catalogue of Charts, Plans, Sailing Directions, and other Publications." Other Government offices which have books, pamphlets, maps, or charts for sale issue price-lists, which will be sent free to all applicants. The prices charged are never more than cost and 10 per cent added, and frequently much less than that.

All public documents, from whatever Department or bureau they may be bought or procured, will be forwarded free of postage to all points in the United States, Canada, and Mexico. To other countries regular rates of postage are charged, and remittances must be made to include such postage.

WHERE DOCUMENTS MAY BE OBTAINED

General directions as to where documents may be procured are given in the body of the catalogue.

LAWS OF THE UNITED STATES

By act of Congress the sale of the Revised Statutes, Statutes at Large, and pamphlet laws has been transferred from the State Department to the Superintendent of Documents. The following are the prices at which the Revised Statutes and the recent Statutes at Large and pamphlet laws are sold. Prices will be furnished on application for Statutes at Large and pamphlet laws prior to the 57th Congress:

Revised Statutes, edition of 1878, sheep	\$2. 90
Revised Statutes, supplement, vol. 1, edition of 1891, sheep	2. 00
Revised Statutes, supplement, vol. 2, edition of 1901, sheep	2. 85
Revised Statutes, supplement, vol. 2, no. 6, 1895-96, paper 15
Revised Statutes, supplement, vol. 2, no. 7, 1896-97, paper 30
Revised Statutes, supplement, vol. 2, no. 8, 1897-99, paper 75
Revised Statutes, supplement, vol. 2, no. 9, 1899-1901, paper 85
Laws of 1st session, 57th Congress, 1901-02, paper	1. 10
Laws of 2d session, 57th Congress, 1902-03, paper 80
Statutes at Large, vol. 32, pt. 1, 57th Congress, 1901-03, sheep ...	2. 50
Statutes at Large, vol. 32, pt. 2, 57th Congress, 1901-03, sheep ...	2. 25

Catalogue of Public Documents

Printed During the Month of November, 1903

Congress of United States

Congressional Record, 58th Congress, 1st session, v. 37, nos. 1-14; Nov. 9-27, 1903. p. 1-374, 4°

NOTE.—The Congressional Record, containing the proceedings and debates of Congress, is issued daily when Congress is in session, and indexes thereto are published semimonthly.

The Record is sold by the Public Printer on the following terms: Single copy, 3 cents, if not more than 24 pages, and 1 cent more for each additional 8 pages; per month, \$1.50; per short session, \$4.00; per long session, \$8.00. Subscriptions are payable in advance. Send remittances for the daily Record by money order or registered letter to H. T. Brian, Chief Clerk, Government Printing Office.

The bound volumes of the Record are sold by the Superintendent of Documents, the price averaging about \$1.40 per part. The set containing the proceedings and debates of the 2d session of the 57th Congress is in 3 parts and index, and costs \$5.60. Send remittances for the bound volumes to the Superintendent of Documents.

58th Congress, extraordinary session, official Congressional directory; by A. J. Halford. Special edition, corrections to Nov. 5, 1903. xix+417 pp. il. 1 pl. map. (S. doc. 1, 58th Cong. 1st sess.)

*Cloth, 35c; *paper, 20c

PUBLIC LAWS

[58th Congress, 1st session] public [joint] resolution 1; approved Nov. 12, 1903.

Congress. Making immediately available appropriations for mileage of Senators and members of House and for [compensation of session employees]. No. 1. Nov. 12. 1 p.

SENATE

Address to Congress [by committee of National Convention of Insurance Commissioners] asking legislation denying use of mails to fraudulent insurance companies; [presented by Mr. Cockrell]. Nov. 17, 1903. 5 pp. (S. doc. 8, 58th Cong. 1st sess.)

Correspondence favoring legislation for upbuilding of American shipping in foreign trade [letter of Alexander R. Smith, calling attention to petition of Liverpool Steamship Owners' Association for state aid to British shipping; presented by Mr. Gallinger]. Nov. 19, 1903. 7 pp. (S. doc. 10, 58th Cong. 1st sess.)

Memorial of Delaware Indians in Cherokee Nation, praying relief relative to their rights in and ownership of lands within nation; [presented by Mr. Quay]. Nov. 23, 1903. 192 pp. (S. doc. 16, 58th Cong. 1st sess.)

NOTE.—Includes Brief history of Delaware Indians; by R. C. Adams.

FOREIGN RELATIONS COMMITTEE

Statements of T. H. Bliss, A. Bijur, and Richard A. Bachia before committee [Dec. 19, 1902-Jan. 21, 1903], on reciprocity treaty with Cuba. Nov. 11, 1903. 44 pp. (S. doc. 2, 58th Cong. 1st sess.)

Statements of T. H. Bliss [before committee, Dec. 19, 1902, Jan. 15, 1903] on reciprocity treaty with Cuba. [1903.] 37 pp.

Cullom, S. M. Report favoring H. 1921, to carry into effect [commercial] convention between United States and Cuba signed Dec. 11, 1902. Nov. 23, 1903. 1 p. (S. rp. 2, 58th Cong. 1st sess.)

PENSIONS COMMITTEE

Gallinger, J. H. Report favoring S. 7, to increase pension of Alfred Woodman. Nov. 27, 1903. 1 p. (S. rp. 4, 58th Cong. 1st sess.)

— Report favoring S. 6, to pension Cora M. Converse. Nov. 27, 1903. 3 pp. (S. rp. 5, 58th Cong. 1st sess.)

— Report amending S. 8, to increase pension of Perry Kittredge. Nov. 27, 1903. 1 p. (S. rp. 6, 58th Cong. 1st sess.)

— Report favoring S. 547, to increase pension of Irving W. Coombs. Nov. 27, 1903. 2 pp. (S. rp. 7, 58th Cong. 1st sess.)

— Report favoring S. 1334, to increase pension of Amy C. Bosworth. Nov. 27, 1903. 1 p. (S. rp. 8, 58th Cong. 1st sess.)

— Report favoring S. 1335, to increase pension of Calvin Daws. Nov. 27, 1903. 1 p. (S. rp. 9, 58th Cong. 1st sess.)

— Report favoring S. 13, to increase pension of William Clark. Nov. 27, 1903. 2 pp. (S. rp. 10, 58th Cong. 1st sess.)

— Report favoring S. 1498, to increase pension of Winslow P. Eayrs. Nov. 27, 1903. 1 p. (S. rp. 11, 58th Cong. 1st sess.)

PRINTING COMMITTEE

Platt, T. C. Report under S. R. 9, 58th Congress, special session, directing committee to ascertain cost, for each session of 54th-57th Congress, of printing documents, other than executive or legislative, printed by order of Senate, or by unanimous consent, on request of individual Senators. Nov. 18, 1903. 15 pp. (S. rp. 1, 58th Cong. 1st sess.)

PUBLIC LANDS COMMITTEE

McLaurin, A. J. Report favoring S. 1344, to quiet certain [swamp] land titles in Mississippi. Nov. 24, 1903. 1 p. (S. rp. 3, 58th Cong. 1st sess.)

HOUSE

Constitution of United States, Jefferson's manual, Rules of House of 58th Congress, and Digest and manual of rules and practice of House; by Asher C. Hinds. Nov. 9, 1903. v+696 pp. (H. doc. 5, 58th Cong. 1st sess.) *Paper, 40c

Inventory of books, maps, and pamphlets in [folding room], Nov. 2, 1903. Nov. 11, 1903. 16 pp. (H. doc. 4, 58th Cong. 1st sess.)

List of reports to be made to Congress by public officers. Nov. 10, 1903. 24 pp. (H. doc. 3, 58th Cong. 1st sess.)

Reynolds v. Butler. Contested election case of George D. Reynolds v. James J. Butler, from 12th district of Missouri [58th Congress]. 1903. 1073 pp.

RULES COMMITTEE

Dalzell, John. Report submitting H. R. 21, fixing time for consideration of H. 1921, to carry into effect commercial convention between United States and Cuba signed Dec. 11, 1902, as substitute for H. R. 17. Nov. 16, 1903. 1 p. (H. rp. 2, 58th Cong. 1st sess.)

WAYS AND MEANS COMMITTEE

- Cooper, S. B. Views adverse to H. 1921, to carry into effect [commercial] convention between United States and Cuba signed Dec. 11, 1902. Nov. 16, 1903. 5 pp. (H. rp. 1, pt. 3, 58th Cong. 1st sess.)
- Payne, S. E. Report favoring H. 1921, to carry into effect [commercial] convention between United States and Cuba signed Dec. 11, 1902. Nov. 13, 1903. 4 pp. (H. rp. 1 [pt. 1], 58th Cong. 1st sess.)
- Williams, J. S. Views of minority on H. 1921, to carry into effect [commercial] convention between United States and Cuba signed Dec. 11, 1902. Nov. 16, 1903. 3 pp. (H. rp. 1, pt. 2, 58th Cong. 1st sess.)

SHEEP-BOUND RESERVE

NOTE.—These volumes, which have been previously published in unbound form or in one or more cloth editions, are now for the first time ready for distribution in sheep binding and are listed in the notice of Shipments to depositories on pages 445-449. The number appended to the description of each volume is the serial number in the set of Congressional documents, in continuation of the system adopted in the Checklist of Public Documents issued by this office.

President of United States

- Copyright [benefits extended to citizens of] Cuba, proclamation. Nov. 17, 1903. 1 p. f°
- Message to Congress at beginning of 1st [or special] session of 58th Congress. 1903. 2 pp. (H. doc. 1, 58th Cong. 1st sess.)
- Payson forest reserve, 2d proclamation. [Nov. 5, 1903.] [2] pp. f°

Agriculture, Department of

NOTE.—Those publications of the Department of Agriculture which are for sale, except those of the Weather Bureau, will be supplied by the Superintendent of Documents, Union Building, Washington, D. C. For the unpriced publications application should be made to the Secretary of Agriculture. The Department has no list of addresses to which all its publications are sent. It issues a monthly list of publications, which is mailed to all applicants, enabling them to select such reports and bulletins as interest them.

Report of Secretary, 1903 [advance sheets]. 1903. 106 l.

ANIMAL INDUSTRY BUREAU

- Information concerning common goats. Oct. 1, 1903. 14 pp. (Circular 42.)
- Report on enzootic among cattle caused by bacillus of enteritidis group [with bibliography], by John R. Mohler and John S. Buckley; from 19th report, 1902. [1903.] ii + 297-331 + [1] pp. 5 pl.
- Special report on diseases of horse. Revised edition. 1903. 600 pp. 18 il. 41 pl. (H. doc. 487, 57th Cong. 2d sess.) *Cloth, 65c

Contents:

- Digestive organs, Diseases of, by C. B. Michener; revised by Leonard Pearson.
- Examination of sick horse; by Leonard Pearson.
- Eye, Diseases of; by James Law.
- Fetlock, ankle, and foot, Diseases of; by A. A. Holcombe.
- General diseases, by R. S. Huidekoper; revised by Leonard Pearson.
- Generative organs, Diseases of; by James Law.
- Heart, blood vessels, and lymphatics, Diseases of, by M. R. Trumbower; revised by Leonard Pearson.
- Lameness, its causes and treatment, by A. Liautard; revised by J. R. Mohler.

Special report on diseases of horse—Continued.

Contents—Continued.

Medicines, Methods of administering, by C. B. Michener; revised by Leonard Pearson.

Nervous system, Diseases of, by M. R. Trumbower; revised by Leonard Pearson.

Respiratory organs, Diseases of, by W. H. Harbaugh; revised by Leonard Pearson.

Shoeing; by J. W. Adams.

Skin, Diseases of; by James Law.

Surra; by C. W. Stiles.

Urinary organs, Diseases of; by James Law.

Wounds and their treatment, by C. B. Michener; revised by J. R. Mohler.

CHEMISTRY BUREAU

Influence of environment upon composition of sugar beet [during] 1902, including study of irrigated sections; by Harvey W. Wiley. 1903. 50 pp. 5 il. (Bulletin 78.) *Paper, 5c

ROAD MATERIAL LABORATORY

Testing of road materials, including methods used and results obtained in laboratory, in collaboration with Office of Public-Road Inquiries; by Logan Waller Page, with Allerton S. Cushman. 1903. 77 pp. 10 il. 5 pl. (Chemistry Bureau. Bulletin 79.) *Paper, 10c

ENTOMOLOGY DIVISION

Codling moth [with bibliography]; by C. B. Simpson. 1903. 105 pp. 19 il. 15 pl. map. (Bulletin 41.) *Paper, 15c

Squash-vine borer, *melittia satyriniformis* Hbn.; by F. H. Chittenden. [Nov. 19, 1903.] 6 pp. 2 il. (Circular 38, revised edition.)

EXPERIMENT STATIONS OFFICE

Experiment Station Record, v. 15, no. 3; Nov. 1903. 1903. x + 209-316 pp. 3 il. *Paper, 10c single copy, \$1.00 a vol. (12 nos.)

NOTE.—Mainly made up of abstracts of reports and publications on agricultural science which have recently appeared in all countries, especially the United States. No. 3 contains a special article, New building for farm mechanics at Iowa College of Agriculture and Mechanic Arts.

List of publications of office on irrigation. Nov. 15, 1903. 7 pp. ([Publication] 358 revised.)

Studies on bread and bread making; by Harry Snyder and L. A. Voorhees. [2d edition.] 1903. 51 pp. 3 il. 1 pl. (Bulletin 67.) *Paper, 5c

Contents:

Losses in process of making bread; by L. A. Voorhees.

Minnesota, University of, Studies on bread and bread making at, in 1897 and 1898; by Harry Snyder.

PORTO RICO AGRICULTURAL EXPERIMENT STATION

Soil survey from Arecibo to Ponce, P. R., by Clarence W. Dorsey, Louis Mesmer, and Thomas A. Caine; from Report of field operations of Bureau of Soils, 1902. 1903. 53 pp. 1 il. 4 pl. map. (Bulletin 3.) *Paper, 10c

LIBRARY

Accessions to Department library, July–Sept. 1903. 1903. 45 pp. (Bulletin 48.) *Paper, 5c

PLANT INDUSTRY BUREAU

Plan of distributing tobacco seed and cultural directions for different types of tobacco distributed. [Oct. 10, 1903.] 15 pp. 16° [Prepared in cooperation with Soils Bureau.]

Pruning; by L. C. Corbett. 1903. 39 pp. 25 il. (Farmers' bulletin 181.)

PUBLICATIONS DIVISION

Monthly list of publications [of Department of Agriculture], Nov. 1903.
Nov. 30, 1903. 4 pp. ([Publication] 477.)

SOILS BUREAU

Applications for reports of Field operations [of bureau, 1899-1902, to be filled by separate reprints therefrom, with list of reports and separates]. [1903.] 4 pp.

STATISTICS BUREAU

FOREIGN MARKETS DIVISION

Agricultural imports of Germany, 1897-1901; by Frank H. Hitchcock.
1903. 323 pp. (Bulletin 30.) * Paper, 20c

WEATHER BUREAU

NOTE.—For these publications application should be made to the Chief of the Weather Bureau.

Climatology of California; by Alexander G. McAdie. 1903. 270 pp. il.
7 pl. 12 maps, 4° (Bulletin L.) Paper, 50c

Monthly Weather Review, v. 31, no. 9; Sept. 1903. Nov. 16, 1903. p. 407-448, 10 pp. of pl. and maps, 4° Paper, 20c single copy, \$2.00 a yr

NOTE.—Summary of weather and river and flood reports from all parts of the United States, with notes covering other countries and various topics of meteorology. Special articles are—

Costa Rica, Climatology of; by H. Pittier.

Hurricane in Gulf of Mexico; by J. Elligers, jr.

Hurricane season [of West Indies]; by Enrique del Monte.

Meteorological investigation, Methods of; by W. N. Shaw.

Meteorology, Recent papers bearing on; by W. F. R. Phillips.

Reclamation work, Weather Bureau cooperation in; by F. H. Brandenburg.

Weather folk-lore and local weather signs; by Edward B. Garriott.
1903. 153 pp. 21 maps. (Bulletin 33.) Paper, 25c

Commerce and Labor Department

NOTE.—The act to establish the Department of Commerce and Labor, approved Feb. 14, 1903 (Stat. L. v. 32, pt. 1, page 825), includes the following provisions:

That there shall be at the seat of government an executive department to be known as the Department of Commerce and Labor, and a Secretary of Commerce and Labor, who shall be the head thereof. * * *

SEC. 4. That the following-named offices, bureaus, divisions, and branches of the public service, now and heretofore under the jurisdiction of the Department of the Treasury, and all that pertains to the same, known as the Light-House Board, the Light-House Establishment, the Steamboat-Inspection Service, the Bureau of Navigation, the United States Shipping Commissioners, the National Bureau of Standards, the Coast and Geodetic Survey, the Commissioner-General of Immigration, the commissioners of immigration, the Bureau of Immigration, the immigration service at large, and the Bureau of Statistics, be, and the same hereby are, transferred from the Department of the Treasury to the Department of Commerce and Labor, and the same shall hereafter remain under the jurisdiction and supervision of the last-named Department; and that the Census Office, and all that pertains to the same, be, and the same hereby is, transferred from the Department of the Interior to the Department of Commerce and Labor, to remain henceforth under the jurisdiction of the latter; that the Department of Labor, the Fish Commission, and the Office of Commissioner of Fish and Fisheries, and all that pertains to the same, be, and the same hereby are, placed under the jurisdiction and made a part of the Department of Commerce and Labor; that the Bureau of Foreign Commerce, now in the Department of State, be, and the same hereby is, transferred to the Department of Commerce and Labor and consolidated with and made a part of the Bureau of Statistics, hereinbefore transferred from the Department of the Treasury to the Department of Commerce and

Labor, and the two shall constitute one bureau, to be called the Bureau of Statistics, with a chief of the bureau; and that the Secretary of Commerce and Labor shall have control of the work of gathering and distributing statistical information naturally relating to the subjects confided to his Department; and the Secretary of Commerce and Labor is hereby given the power and authority to rearrange the statistical work of the bureaus and offices confided to said Department, and to consolidate any of the statistical bureaus and offices transferred to said Department; and said Secretary shall also have authority to call upon other Departments of the Government for statistical data and results obtained by them; and said Secretary of Commerce and Labor may collate, arrange, and publish such statistical information so obtained in such manner as to him may seem wise. * * *

SEC. 5. That there shall be in the Department of Commerce and Labor a bureau to be called the Bureau of Manufactures, and a chief of said bureau. * * *

SEC. 6. That there shall be in the Department of Commerce and Labor a bureau to be called the Bureau of Corporations, and a Commissioner of Corporations who shall be the head of said bureau. * * *

SEC. 7. That the jurisdiction, supervision and control now possessed and exercised by the Department of the Treasury over the fur-seal, salmon and other fisheries of Alaska and over the immigration of aliens into the United States, its waters, territories and any place subject to the jurisdiction thereof, are hereby transferred and vested in the Department of Commerce and Labor. * * *

SEC. 11. A person, to be designated by the Secretary of State, shall be appointed to formulate, under his direction, for the instruction of consular officers, the requests of the Secretary of Commerce and Labor; and to prepare from the dispatches of consular officers, for transmission to the Secretary of Commerce and Labor, such information as pertains to the work of the Department of Commerce and Labor. * * *

SEC. 12. That the President be, and he is hereby, authorized, by order in writing, to transfer at any time the whole or any part of any office, bureau, division or other branch of the public service engaged in statistical or scientific work, from the Department of State, the Department of the Treasury, the Department of War, the Department of Justice, the Post-Office Department, the Department of the Navy or the Department of the Interior, to the Department of Commerce and Labor. * * *

SEC. 13. That this Act shall take effect and be in force from and after its passage: *Provided, however,* That the provisions of this Act other than those of section twelve in relation to the transfer of any existing office, bureau, division, officer or other branch of the public service or authority now conferred thereon, to the Department of Commerce and Labor shall take effect and be in force on the first day of July, nineteen hundred and three, and not before.

The Commerce and Labor Department distributes the Consular Reports gratuitously.

Amendment to sec. 4426, Revised Statutes, relating to vessels propelled by gas, fluid, naphtha, or electric motors [act of Congress and regulations]. Oct. 31, 1903. 2 pp. 4° (Dept. circular 21, 1903; Steamboat-Inspection Service.)

Regulations concerning accounts, Immigration Service [with Table of rates for Government messages]. Aug. 21, 1903. 7 pp. 4° (Dept. circular 16, 1903; Bureau of Immigration.)

COAST AND GEODETIC SURVEY

NOTE.—The Charts, Coast Pilots, and Tide Tables of the Coast and Geodetic Survey are sold at the office of the Survey, in Washington, and also by one or more sales agents in each of the important American seaports. The monthly Notice to Mariners may be had free at these agencies, at all United States custom-houses, at the branch hydrographic offices of the Navy Department, at United States consulates in foreign ports, and at the office of the Coast Survey.

Catalogue of charts, coast pilots, and tide tables, 1903. 1903. 174 pp. il. 4°

Charts

Guanica Harbor, P. R.; chart 929. Scale 1:10,000. Nov. 1903.	35.6 × 30.2 in.	50c
Porto Rico, West coast of, W. I.; chart 901. Scale 1:100,000. Nov. 1903.	32.8 × 43 in.	50c
St. Helena Sound, S. C.; chart 436. Scale 1:40,000. Nov. 1903, first published 1868.	23.9 × 28.1 in.	25c
Tampa Bay, Fla., Entrance to; chart 477. Scale 1:40,000. Nov. 1903, first published 1877.	27 × 37.9 in.	25c

Washington, Sea coast and interior waters of, Grays Harbor to Semiahmoo Bay; chart 6400. Scale 1:300,000. Nov. 1903, first published 1886. 38.8 × 32.5 in. 50c

FISHERIES BUREAU

NOTE.—The Bureau supplies gratuitously those of its publications which are in print.

Statement of certain fishery products landed at Boston and Gloucester, Mass., by American fishing vessels, Oct. 1903. 1 p. oblong 8° (Statistical bulletin 141.)

LABOR BUREAU

NOTE.—The Bureau furnishes its publications gratuitously to those who apply for them.

Bulletin 49, Nov. 1903. 1903. iii + 1137-1398 + [vi] pp. (H. doc. 370, pt. 5, 57th Cong. 2d sess.) [Bimonthly.] *Paper, 15c

Contents:

Articles, Leading, in past numbers of bulletin.
Decisions of courts affecting labor.
Employers and employees, Agreements between.
Foreign statistical publications, recent, Digest of.
Laws of various States relating to labor enacted [in 1901-03]; Hawaii, Minnesota, New Jersey, South Carolina, Virginia.
Living, Cost of.
New Zealand, Industrial conciliation and arbitration act of.
— Labor conditions in; by V. S. Clark.
State bureaus of labor statistics, Digest of recent reports of: Connecticut, Maine, Massachusetts, Montana, Nebraska.
Title-page, contents, and index of v. 8, Jan.-Nov. 1903.

LIGHT-HOUSE BOARD

NOTE.—The Bulletins, Beacon and Buoy Lists, and Light Lists published by the Light-House Board can be obtained, free of charge, on application to the office of the Board at Washington, the inspectors of the several lighthouse districts, the United States custom-houses, the Hydrographic Office and its branches, and the sales agents of the Coast and Geodetic Survey.

5th District. List of beacons, buoys, and day marks, from Metomkin Inlet, Va., to New River Inlet, N. C.; corrected to Sept. 1, 1903. 1903. 151 + viii pp. large 8°

STATISTICS BUREAU

NOTE.—Created July 1, 1903, by consolidation of the Statistics Bureau, transferred from the Treasury Department, and the Foreign Commerce Bureau, transferred from the State Department.

The Bureau furnishes its publications gratuitously to those who apply for them.

Daily consular reports, Nov. 2-30, 1903; nos. 1790-1813. 1903. 6 il. [Daily except Sundays and holidays.]

Diplomatic and consular service of United States, corrected to Sept. 14, 1903, with maps showing location and classification of consular officers in each grand division of the world; from Summary of Commerce and Finance, Sept. 1903. 761-792 + [1] pp. 7 maps, 4°

Exports of domestic breadstuffs, provisions, cotton, and mineral oils, Oct. 1903. 1903. 14 pp. 4° (Bulletin 4, series 1903-04.) [Monthly.]

Monthly Consular Reports, Nov. 1903; v. 73, no. 278. 1903. xix + 411-593 pp. 12 il. [These articles have appeared previously in the Daily consular reports.] *Paper, 15c

Contents:

Africa, German southwest, Foreign trade of; by O. J. D. Hughes.
African, South, imports; transmitted by S. W. Hanauer.
Agriculture, Schools for, in Quebec; by F. S. S. Johnson.
Ambulance Corps, New South Wales Railway and Tramway; by F. W. Goding.
Brewing industry of Kulmbach; by E. L. Harris.

Monthly Consular Reports—Continued.

Contents—Continued.

- Brick and stone. Calcareous brick and stone manufacture in Germany; by F. H. Mason.
 Bricklaying in winter; by F. W. Mahin.
 British colonial preferential tariffs, Extension of.
 Cattle, American, in south Africa; transmitted by W. S. Hollis.
 — and meats, Increased French duties on; by A. M. Thackara.
 Chinese Eastern Railway, Sea service of; by R. T. Greener.
 Commercial agents, foreign, Regulations for, in Europe; by J. F. Monaghan.
 Commercial items; by S. W. Hanauer.
 Consular service, British; by S. W. Hanauer.
 Contractors, American, Opportunity for, in Italy.
 Copra, Tahitian, for United States; by W. F. Doty.
 Cotton cultivation in British west Africa; transmitted by Marshal Halstead.
 Crops, Condition of, in Germany; by B. H. Warner, jr.
 Cuba; by Frank Steinhart.
 Doll trade, Foreign, of Thuringia; by O. J. D. Hughes.
 Electric car lines in Germany; by H. W. Harris.
 Electric lights on railway trains in Germany and Austria; by E. L. Harris.
 Electric traction, Important step in; by F. H. Mason.
 Electricians, German, Congress of; by H. W. Harris.
 Engine cars on English railways; by Marshal Halstead.
 Finland, Commerce of, with United States; by Victor Ek.
 Foreign reports and publications.
 German-Asiatic trade; by O. J. D. Hughes.
 German colonies in southern Brazil; transmitted by G. H. Murphy.
 German customs tariff, New; by J. J. Langer.
 German-South American trade; by O. J. D. Hughes.
 Germany, Commercial and industrial depression in; by O. J. D. Hughes.
 Gold, Recovery of, in combination with tellurium and selenium; by F. H. Mason.
 Gold and manganese mining in British Columbia; by L. E. Dudley.
 Grain movement in Germany; by H. W. Diederich.
 Grain shippers, American, at fault; by S. W. Hanauer.
 Hosiery, American, for the Orient; by J. F. Monaghan.
 Industrial and trade notes.
 Industrial education in Europe; by E. L. Harris.
 Industrial exposition, Ludwigshafen; by H. W. Harris.
 Machinery, Importation of, into south Africa; by S. W. Hanauer.
 Manufactures, American, Room for, in Germany; by O. J. D. Hughes.
 Mexico, American and other interests in.
 Mineral output of Russia; by W. R. Holloway.
 Mineral production of Canada; by E. D. Ingall, transmitted by Gustave Beutels-pacher.
 Mosceley's [Alfred] industrial inquiry.
 Ninchwang and Manchuria, Commercial conditions in; by H. B. Miller.
 Notes.
 Paraguay, Business opportunities in; by J. N. Ruffin.
 Sardine catch, French, Failure of; by B. H. Ridgely.
 Siberian notes; by R. T. Greener.
 [Steamship service between] Australia, the Orient, and San Francisco; by O. H. Baker.
 Sugar régime, New, in France; by B. H. Ridgely.
 Tea, Imports of, into United States [1902].
 Tea cultivation and curing in India; by E. E. Osgood.
 Tea industry of India; by R. F. Patterson.
 Technical education, Influence of; by S. W. Hanauer.
 Tool-machinery and small-iron industry, Remscheid; by J. J. Langer.
 Transvaal, Imports into.
 Vanilla beans, Tahitian, in American market; by W. F. Doty.

Monthly Summary of Commerce and Finance of United States, Sept. 1903; no. 3, series 1903-04. 1903. 753-1024+[1] pp. 7 maps, 4°

*Paper, 35c

Interior Department

NOTE.—The Decisions of the Department of the Interior in pension cases are issued in slips and in signatures, and the Decisions in land cases are issued in signatures, both being published later in bound volumes at prices ranging from \$1.05 to \$1.45 per volume. Subscribers may deposit \$1.00 in the Department and receive the contents of a volume of the Decisions of either kind in separate parts as they are issued.

Decisions [in appealed pension and bounty land claims] v. 14, [signatures] 9-12. [1903.] p. 129-192.

Same, [v. 14, slips] 47-56, 59, 60; Sept. 28-Oct. 31, 1903.

Draft of bill to control grazing in forest reserves. Nov. 19, 1903. 1 p.
(H. doc. 12, 58th Cong. 1st sess.)

CENSUS OFFICE

NOTE.—Transferred July 1, 1903, to Commerce and Labor Department under the name of Census Bureau.

12th census of United States, 1900, special reports, employees and wages; by Davis R. Dewey. 1903. cxv + 1228 pp. 4° *Cloth, \$2.00

12th census of United States, 1900, statistical atlas; Henry Gannett, geographer. 1903. 91 pp. 59 pl. 84 pp. of pl. 64 maps, 4° *Cloth, \$4.00

EDUCATION BUREAU

NOTE.—Such publications of this Bureau as are in print may be had gratuitously by addressing the Commissioner of Education.

Catalog of A. L. A. library, 5,000 volumes for popular library, selected by American Library Association and shown at World's Columbian Exposition. Reprint, 1903. xx + 592 pp. (Whole no. 200.) *Paper, 35c

GEOLOGICAL SURVEY

NOTE.—The publications of the United States Geological Survey consist of annual reports (restricted to one volume each), bulletins, Mineral Resources, Professional Papers, and Water-Supply and Irrigation Papers, which are intended for free distribution; and maps, Monographs, and folios of the Geologic Atlas and the Topographic Atlas of the United States, which are sold at prices ranging from 5c to \$11.00 each. Address the Director of the Geological Survey, Washington. For topographic sheets see below.

Cement resources of Alabama; [presented by Mr. Morgan]. Nov. 24, 1903. 23 pp. (S. doc. 19, 58th Cong. 1st sess.)

Contents:

Portland cement manufacture; by E. C. Eckel.

Portland cement materials of central and southern Alabama; by E. A. Smith.

Geologic atlas of United States, Parker folio, S. Dak. Library edition. 1903. 6 pp. 7 il. 3 maps, large 4° (Folio 97.) *Paper, 25c

Report of progress of stream measurements for calendar year 1902, by F. H. Newell, pt. 4, interior basin, Pacific Coast, and Hudson Bay drainage. 1903. 250 + [i] pp. 2 il. (Water-supply and irrigation paper 85; H. doc. 489, 57th Cong. 2d sess.) *Paper, 15c

Topographic sheets

NOTE.—The Geological Survey is making a topographic map of the United States. The sheets of which it is composed are projected without reference to political divisions, and are designated by some prominent feature found on them. Three scales are used, 1:62,500, 1:125,000, and 1:250,000. These correspond, approximately, to 1 mile, 2 miles, and 4 miles to 1 linear inch on the map. The size, unless otherwise given, is about 17.5 inches in height by 11.5 to 16 inches in width, exclusive of the margin, the width varying with the latitude. A description of the topographic map is printed on the reverse of each sheet catalogued below.

About one-third of the area of the country, excluding Alaska, has been mapped, nearly every State being represented. Massachusetts, Connecticut, Rhode Island, New Jersey, and the District of Columbia are completely mapped. Sheets of the regular size are sold by the Survey at 5c each; but in lots of 100 or more copies, whether of the same sheet or of different sheets, the price is 2c each.

California, Goleta special map, lat. 34° 20'–34° 35', long. 119° 45'–120°. Scale 1:62,500, contour interval 50 ft. Edition of Oct. 1903.

California, Santa Paula quadrangle, lat. 34° 15'–34° 30', long. 119°–119° 15'. Scale 1:62,500, contour interval 50 ft. Edition of Oct. 1903.

Massachusetts, Boston and vicinity, lat. 42° 15'–42° 30', long. 70° 45'–71° 15'. Scale 1:62,500, contour interval 20 ft. Edition of Oct 1903. 17.5 × 26 in.

- Missouri, Palmyra quadrangle, lat. $39^{\circ} 30' - 40^{\circ}$, long. $91^{\circ} 30' - 92^{\circ}$. Scale 1:125,000, contour interval 20 ft. Edition of Oct. 1903.
- Ohio, Cadiz quadrangle, lat. $40^{\circ} 15' - 40^{\circ} 30'$, long. $80^{\circ} 45' - 81^{\circ}$. Scale 1:62,500, contour interval 20 ft. Edition of Oct. 1903.
- Ohio, Vermilion quadrangle, lat. $41^{\circ} 15' - 41^{\circ} 30'$, long. $82^{\circ} 15' - 82^{\circ} 30'$. Scale 1:62,500, contour interval 10 ft. Edition of Oct. 1903.

HYDROGRAPHY DIVISION

NOTE.—Hereafter the publications of the Hydrography Division will be entered under the Geological Survey.

HAWAII

- Letter from secretary in relation to transmission of laws and journals of Legislature. Nov. 16, 1903. 1 p. (H. doc. 10, 58th Cong. 1st sess.)
- Report of governor, 1903. 1903. 86 pp.

INDIAN BUREAU

- [72d] annual report of commissioner of Indian affairs, 1903. 1903. iv + 111 pp.

PATENT OFFICE

NOTE.—The Patent Office publishes specifications and drawings of patents, both in single copies and monthly volumes, the former at 5c and the latter at \$5.00. The former are not enumerated in this catalogue. For certified copies of patents, including specification, drawing, certificate, and grant, the price is 80c. A variety of indexes, giving a complete view of the work of the office from 1790 to date, are published at prices ranging from 25c to \$10.00 per volume. The Rules of Practice and pamphlet Patent Laws are furnished free. The Patent Office issues coupon orders in packages of 20 at \$1.00 per package, or in books containing 100 coupons at \$5.00 per book. One coupon will procure a specification with drawings, and two coupons a copy of the Official Gazette. They are good until used. Address Chief Clerk, Patent Office.

- Alphabetical lists of patentees and inventions for July and Aug. 1903. 182 pp. large 8° [Bimonthly. Index to v. 105 of Official Gazette.]
- Official Gazette, Nov. 3-24, 1903; v. 107, nos. 1-4. 1903. 1-1098 + [ciii] pp. il. large 8° [Weekly.] Paper, 10c single copy, \$5.00 a yr

NOTE.—Contains the patents, trade-marks, designs, and labels issued each week; also decisions of the Commissioner of Patents and of United States courts in patent cases.

- Same, [title-page, errata, index to decisions, etc., to] v. 104. 1903. [vii] + xvi pp. large 8°

PENSION BUREAU

- Roster of examining surgeons. 1903. 648 pp. [Half the pages are left blank for manuscript additions.]

Justice, Department of

ATTORNEY-GENERAL, ASSISTANT, FOR COURT OF CLAIMS

- Annual report [for year ending Oct. 31] 1903. 1903. 9 pp.

Navy Department

- Assistant civil engineers, rules regarding examinations of candidates for appointment in Navy. Oct. 23, 1903. 2 pp. 12°

Circular defining chief characteristics of 13,000-ton battleships, no. 23, Mississippi, and no. 24, Idaho, authorized by act approved Mar. 3, 1903. [Nov. 7, 1903.] 15 pp.

Communication from vice-president and general manager of Commercial Pacific Cable Company relating to legislation desired for Midway Islands. Nov. 16, 1903. 4 pp. (H. doc. 9, 58th Cong. 1st sess.)

Report of board appointed to select site for naval training station on Great Lakes. Nov. 12, 1903. 11 pp. (H. doc. 6, 58th Cong. 1st sess.)

EQUIPMENT BUREAU

Catalogue of ship's and crew's libraries of U. S. S. Philadelphia. Oct. 1903. 35 pp. 12°

HYDROGRAPHIC OFFICE

NOTE.—The Charts, Sailing Directions, etc., of the Hydrographic Office are sold by the office in Washington and also by agents at the principal American and foreign seaports and American lake ports. Copies of the Hydrographic Bulletin and Notice to Mariners are supplied free on application at the Hydrographic Office in Washington and at the branch offices in Boston, New York, Philadelphia, Baltimore, Norfolk, Savannah, New Orleans, San Francisco, Portland (Oreg.), Port Townsend, Chicago, Cleveland, Buffalo, Sault Ste. Marie, and Duluth.

Annual report of hydrographer, 1903. 1903. 33 pp. [Annual report for 1902 was not published separately.]

Hawaiian Islands and islands, rocks, and shoals to westward. 2d edition. 1903. 170 pp. ([Publication] 115.) Cloth, 40c

Price list of books on sale by office, including list of agents. 1903. 7 pp.

Charts

Chapel Roads and Chapel Cove, Bay of Waterfalls, Andreanof Group, Adakh Island, Aleutian Islands, from reconnoissance in Aug. 1902 by U. S. R. S. McCulloch; chart 2144. Scale 1000 yds.=7.5 in. Nov. 1903. 12.7×18.4 in. 10c

La Mar Bay, Margarita Island, Venezuela, from survey in 1903 by R. M. S. Solent; chart 2146. Scale naut. m.=2 in. Nov. 1903. 12.7×16.4 in. 10c

Nazan Bay, Western part of, Andreanof Group; Atka Island, Aleutian Islands, from reconnoissance in Aug. 1902 by U. S. R. S. McCulloch; chart 2147. Scale naut. m.=8 in. Nov. 1903. 26.8×18.5 in. 20c

Nishitomari Wan, [or] Ajiro Bay, east coast of Tsushima, Japan, from Japanese survey in 1875; chart 2148. Scale 1000 yds.=4.77 in. Nov. 1903. 18.6×20.5 in. 20c

Pilot chart of north Pacific Ocean, Dec. 1903; chart 1401. Scale 1° long.=0.2 in. Nov. 5 [1903]. 20.7×35.3 in. [Monthly.] 10c

NOTE.—Contains, in addition to sailing routes, etc., charts published, etc., Oct. 1-31, 1903; storm tracks; fishing banks; forecast of wind and weather; proposed pilot charts of south Atlantic and south Pacific Ocean; equator crossings in Atlantic Ocean.

Polar regions, Baffin Bay to Lincoln Sea, showing recent discoveries by R. E. Peary, with earlier surveys and examinations made by U. S. S. Polaris expedition in 1871-2 under C. F. Hall, British Arctic expedition in 1875-6 under G. S. Nares, Lady Franklin Bay expedition in 1881-4 under A. W. Greely; chart 2142. Scale 1° lat.=3.1 in. Oct. 1903. 33.4×30.7 in. 40c

Tamatave, [or] Toamasina, Madagascar, east coast, from French survey, 1901; chart 600. Scale naut. m.=2.2 in. Nov. 1903. 26.1×19.4 in. 10c

JUDGE-ADVOCATE-GENERAL

Report, 1903. 1903. 6 pp.

MARINE CORPS

Annual report of major-general commandant, 1903. 1903. 56 pp.

NOTE.—Includes reports of commanding officers of marines, etc.

MEDICINE AND SURGERY BUREAU

Report of surgeon-general, Navy [with accompanying papers], 1903. 1903. 295 pp. 3 il.

NOTE.—Includes medical statistics, reports from naval hospitals, etc., and the following special reports—

Bacteriological report; by T. A. Berryhill.

Cerebro-spinal meningitis, Report on epidemic of, U. S. R. S. Minneapolis; by C. F. Stokes.

Cholera epidemic, Summary of measures and recommendations looking to arrest of, at Cavite, P. I.; by F. A. Hesler.

Contagious diseases, Report on, Naval Training Station, Newport, R. I.; by G. H. Barber.

— San Francisco, Cal.; by H. B. Fitts.

Diphtheria, Report of epidemic of, on board U. S. S. Buffalo; by G. E. H. Harmon.

— Report on, on board receiving ships Franklin and Richmond; by C. T. Hibbett.

— Report on cases of, at naval hospital, Norfolk, Va.; by R. C. Persons.

Epidemic influences, Report on U. S. receiving ship Minneapolis under; by Clement Biddle.

Medicine, 14th International Congress of, at Madrid, Summary of report on; by D. N. Carpenter.

Naval Hospital Corps School of Instruction, naval hospital, Norfolk, Va., Report on; by R. C. Persons.

Surgical technique, naval hospital, New York; by W. C. Braisted.

Yellow fever aboard ships, Some of experiences of Navy with; by F. W. F. Wieber.

NAVAL WAR RECORDS OFFICE

Report of superintendent [on work of office and Navy Department library], 1903. 1903. 6 pp.

NAVIGATION BUREAU

Regulations governing admission of candidates into Naval Academy as midshipmen. Oct. 1903. 15 pp.

ORDNANCE BUREAU

Course of instruction in ordnance at seamen's quarters, navy yard, Washington, D. C. 1903. 34 pp.

Report of chief, 1903. 1903. 96 pp. [Includes reports of Naval Gun Factory, Naval Proving Ground, and Naval Torpedo Station.]

STEAM ENGINEERING BUREAU

Annual report of chief, 1903. 1903. 67 pp.

SUPPLIES AND ACCOUNTS BUREAU

Annual report of paymaster-general of Navy, 1903. 1903. 151 pp.

Post-Office Department

United States Official Postal Guide, 2d series, v. 25, no. 11; Nov. 1903. Philadelphia. 52 pp. 12° [Monthly.] Paper, \$2.00 a yr

NOTE.—No. 1, January, for each year, is what is usually known as the Postal Guide, nos. 2-12 being additions and corrections. Sold by the printer, George F. Lasher, 147 North 10th street, Philadelphia.

FOREIGN MAIL SERVICE

Report of superintendent, 1903. 1903. 31 pp.

NOTE.—Appendix contains international postal statistics for 1901.

POSTMASTER-GENERAL, 1ST ASSISTANT

Report, 1903. 1903. 44 pp.

NOTE.—Relates to salaries and allowances, money-order system, post-office supplies, Dead-Letter Office, and correspondence.

POSTMASTER-GENERAL, 2D. ASSISTANT

Principal laws and regulations relative to transportation of mails on electric and cable car lines. Oct. 30, 1903. 12 pp.

Report, 1903. 1903. 322 pp.

NOTE.—Relates to mail service and mail equipments.

State Department

NOTE.—The State Department distributes its publications gratuitously. Requests for Consular Reports should hereafter be made to the Department of Commerce and Labor. For sale of laws see page 418.

A new bureau, to be known as the Bureau of Trade Relations, was organized in the State Department July 1, 1903, under sec. 11 of act to establish the Department of Commerce and Labor.

Colombia. New Granada, treaty of peace, amity, navigation, and commerce, concluded [Bogotá], Dec. 12, 1846, proclaimed June 12, 1848. Nov. 18, 1903. 12 pp. (S. doc. 9, 58th Cong. 1st sess.)

— Same [with Message from President Polk transmitting treaty, and accompanying documents]. Nov. 23, 1903. 67 pp. (S. doc. 17, 58th Cong. 1st sess.)

Cuba. Commercial convention between United States and Cuba, signed Habana, Dec. 11, 1902 [with amendments proposed by Committee on Foreign Relations, 58th Congress]. Mar. 12, 1903. 7 pp. (Senate executive I [pt. 1], 57th Cong. 2d sess.) [Injunction of secrecy removed Nov. 11, 1903.]

— Same [as amended by Senate]. Mar. 19, 1903. 7 pp. (Confidential; [Senate] executive I [pt. 1], 57th Cong. 2d sess.) [Injunction of secrecy removed Nov. 11, 1903.]

NOTE.—The series of documents to which these belong is printed in confidence for the use of the Senate, and is inaccessible to other persons unless, as in these instances, the Senate removes the injunction of secrecy.

— Same. Nov. 10, 1903. 5 pp. (H. doc. 2, 58th Cong. 1st sess.)

— Treaty between United States and Cuba, signed [Habana]; July 2, 1903, for adjustment of title to Isle of Pines. Nov. 11, 1903. 3 pp. (Confidential; [Senate] executive B, 58th Cong. 1st sess.) [Injunction of secrecy removed Nov. 24, 1903.]

NOTE.—The series of documents to which this belongs is printed in confidence for the use of the Senate, and is inaccessible to other persons unless, as in this instance, the Senate removes the injunction of secrecy.

— Diplomatic list, Nov. 1903. 14 pp. 24^c [Monthly.]

Great Britain. Neutrality of Great Britain in Civil War [correspondence reprinted from Papers relating to foreign affairs accompanying Message of President at commencement of 2d session of 37th Congress, Dec. 1861]. Nov. 24, 1903. 121 pp. (S. doc. 18, 58th Cong. 1st sess.)

Panama. Response to resolution, correspondence relating to recent revolution on Isthmus of Panama [with correspondence of Navy Department]. Nov. 16, 27, 1903. 23 + 8 pp. (H. doc. 8, 2 pts. 58th Cong. 1st sess.)

AMERICAN REPUBLICS BUREAU

NOTE.—This Bureau sells its own monthly bulletins, handbooks, etc., at prices usually ranging from 5c to 75c. Address the Director of the Bureau.

Monthly bulletin, Nov. 1903; whole no. 122, v. 15, no. 5. 1903. p. 1163-1444. (H. doc. 310, pt. 11, 57th Cong. 2d sess.) [Contains articles in Spanish, English, Portuguese, and French.]

Paper, 25c single copy, \$2.00 a yr

Contents:

Additions to Columbus Memorial Library, Oct. [1903].
 Argentina. Trade statistics, Aug. 1903; port movements in July, 1903; sheep raising.
 Bolivia. Foreign commerce in 1902; notes.
 Book notes.
 Brazil. Carboniferous basin of Amazon; culture of cocoa trees in Bahia; coffee production in 1902-3; coffee market in Aug. 1903; general coffee market; sugar market at Federal capital; cotton; notes.
 Central and South America and Cuba, Some books on, recently added to Library of Congress.
 Chile. Mineral and trade statistics; Trans-Andine Railway; nitrate production and trade; concession for extension of Taltal Railway to Atacama.
 Colombia. Coffee growing in Republic; shoe trade of Republic.
 Costa Rica. Customs receipts Apr.-Sept. 1903; coffee production and destination in 1902-3.
 Cuba. Message of President Palma.
 Extradition, Treaty of, between Guatemala and United States [concluded Washington, Feb. 27, 1903, proclaimed July 17, 1903].
 German-South American trade.
 Gold and silver, Production of, in 1902.
 Great Britain, Trade of America and, first 9 months of 1903.
 Haiti. Notes.
 Honduras. Commerce and industries, 1902-3.
 International Exchange, Mexican Commission on, Report of.
 Latin America, Trade opportunities in.
 Mexico. Foreign commerce in July, 1903; customs duties, July, 1903; establishment of industrial technological museum; development of trade relations with Austria-Hungary; trade with United States; notes.
 Nicaragua. Gold mines of eastern Nicaragua.
 Paraguay. Exports through port of Asunción during first half of 1903 to River Plate and Europe; free importation of carriages and harness; construction of street railway.
 Periodicals and newspapers on file.
 Peru. Maritime customs receipts of Republic in 1902; copper; notes.
 Peso, Philippine, Sign for.
 United States. Trade with Latin America; consular trade reports; foreign commerce in Sept. [1903]; trade in tropical products; report of Commission on International Exchange [summary]; miscellaneous notes.
 Uruguay. Exports, first 8 months of 1903; customs revenue, first 8 months of 1903; port movements in July, 1903.
 Venezuela. New export duties on cattle; import duties at Cardpano.

FOREIGN COMMERCE BUREAU

NOTE.—Transferred July 1, 1903, to Commerce and Labor Department and consolidated with the Statistics Bureau, transferred from the Treasury Department. The bureau so formed is called the Statistics Bureau. See page 425.

ROLLS AND LIBRARY BUREAU

List of books, pamphlets, and maps received Jan.-June, 1903, with references to articles in periodicals relating to law of nations, diplomacy, history, and political science, supplemented by list of periodicals and newspapers received; new series, no. 27. [1903.] 62 pp. 4° [Semiannual.]

Treasury Department

Accounts sent to auditor for Treasury to be accompanied by original Treasury instructions, if any. Nov. 23, 1903. 1 p. 4° (Dept. circular 129, 1903; Division of Customs.)

Fines and fees under customs and navigation laws to be deposited separately. Nov. 14, 1903. 1 p. 4° (Dept. circular 128, 1903; Division of Public Moneys.)

160th call, redemption of 5 per cent bonds of 1904. Nov. 2, 1903. 1 p. 4° (Dept. circular 124, 1903; [Division of] Loans and Currency.)

Receipts to be taken from payees of awards under sec. 4, act June 22, 1874. Nov. 11, 1903. 1 p. 4° (Dept. circular 127, 1903; Division of Customs.)

Treasury decisions under tariff, internal revenue, and other laws, weekly, v. 6, nos. 45-48; Nov. 5-26, 1903. [Department decisions numbered 24749-803 including general appraisers' decisions 5460-89, and internal-revenue decisions 713-720.]

APPRAISERS

Annual report of Board of General Appraisers for 12 months ended Oct. 1, 1903. 1903. 8 pp. (Treas. Dept. doc. 2347.)

Reappraisements of merchandise by general appraisers [on Oct. 22-Nov. 21, 1903]; Nov. 2-30, 1903. 4° (Reappraisement circulars 1008-19; Division of Customs.) [Weekly.]

ARCHITECT, SUPERVISING

Annual report, 1903. 1903. 260 pp. (Treas. Dept. doc. 2346.)

AUDITOR FOR POST-OFFICE DEPARTMENT

Report to Secretary of Treasury and to Postmaster-General, 1903. 1903. 181 pp. (Treas. Dept. doc. 2344.)

COAST AND GEODETIC SURVEY

NOTE.—Transferred July 1, 1903, to Commerce and Labor Department. See page 424.

COMPTROLLER OF TREASURY

Decisions, v. 10, pt. 1, July-Sept. 1903; containing decisions by Robert J. Tracewell and Leander P. Mitchell. 1903. vii + 1-317 + xii pp.

GOVERNMENT ACTUARY

Market prices and investment values of outstanding securities [Oct. 1903]. Nov. 2, 1903. 2 pp. 4° (Treasury Dept. Dept. circular 125, 1903.)

INTERNAL REVENUE OFFICE

Distilled spirits, marks on packages put up by wholesale liquor dealers, regulations amended. Nov. 9, 1903. 1 p. 4° ([Circular] 650; Treasury Dept., Dept. circular 126, 1903.)

LIGHT-HOUSE BOARD

NOTE.—Transferred July 1, 1903, to Commerce and Labor Department. See page 425.

PUBLIC HEALTH AND MARINE HOSPITAL SERVICE

Annual report of surgeon-general, 1902. 1903. 487 pp. il. 29 pl. (Treas. Dept. doc. 2331.) *Paper, 50c

NOTE.—Includes the following contributed articles:

Bacillus pestis, Organism resembling; by S. B. Grubbs.

Disinfection, Necessity of; by M. J. Rosenau.

Mosquito cycle of malaria, Short description of; by H. B. Parker.

Points, Dry, versus glycerinated virus, from bacteriologic standpoint; by M. J. Rosenau.

Stegomyia fasciata, [mosquito]; by H. B. Parker.

Tuberculosis, Sanatorium treatment of, analysis of 300 cases treated at Marine-Hospital Service sanatorium, Fort Stanton, N. Mex.; by P. M. Carrington.

Public Health Reports, v. 18, nos. 45-48; Nov. 6-27, 1903. 1903. [xv] + 1921-2127 pp. [Weekly.]

NOTE.—This publication, showing health conditions in various parts of this and other countries, as reported by the officers of the Public Health and Marine Hospital Service and others, is for gratuitous distribution, but the edition is limited, and the document is intended only for health officers and other persons interested in sanitary affairs. To obtain it application should be made to the Surgeon-General of the Public Health and Marine Hospital Service, Treasury Department. Special articles are—

Bubonic plague, Sanitary prophylaxis of pest, and modification necessary in quarantine regulations, by J. M. Eager; no. 46.

Hydrocyanic-acid gas against household insects, by L. O. Howard; no. 46.

HYGIENIC LABORATORY

Antiseptic and germicidal properties of glycerin; by M. J. Rosenau. Sept. 1903. 30 pp. (Bulletin 16.)

STATISTICS BUREAU

NOTE.—Transferred July 1, 1903, to Commerce and Labor Department. See page 425.

STEAMBOAT INSPECTION SERVICE

NOTE.—Transferred July 1, 1903, to Commerce and Labor Department.

Annual report of supervising inspector-general, 1903 [with reports of district inspectors, calendar year 1902]. 1903. 322 pp. (Treas. Dept. doc. 2341.)

War Department

ADJUTANT-GENERAL

Army list and directory, officers of Army, Nov. 20, 1903; [no.] 48. 73 pp. *Paper, 10c single copy, \$1.00 a yr

Communication submitting compilation of statutory provisions governing discharge of enlisted men from military service, with statement of army regulations of 1901; presented by Mr. Cockrell. Nov. 12, 1903. 4 pp. (S. doc. 3, 58th Cong. 1st sess.)

Federal aid in domestic disturbances [or, Employment of troops in enforcement of laws] 1787-1903; by Frederick T. Wilson. Mar. 2, 1903. 394 pp. (S. doc. 209, 57th Cong. 2d sess.)

MILITARY INFORMATION DIVISION

NOTE.—The Military Information Division has been transferred from the Adjutant-General's Office to the Office of Chief of Staff; but as the organization of the War Department is at present in a transition stage, the arrangement of this catalogue remains unchanged for the present.

French-English military technical dictionary; by Cornélis De Witt Willcox. 1903. xiii + 493 pp. ([Publication 24]; War Dept. doc. 95.) [This publication was originally issued in 3 parts during 1899 and 1900.]

Index of special military subjects contained in books, pamphlets, and periodicals received during quarter ending Sept. 30, 1903. 1903. 19 pp. (War Dept. doc. 175.)

CHICKAMAUGA AND CHATTANOOGA NATIONAL PARK COMMISSION

Annual report, 1903. 5 pp.

ENGINEER DEPARTMENT

Alabama. Annual report upon improvement of rivers and harbors in western Alabama and eastern Mississippi, in charge of W. E. Craig-hill and Spencer Cosby; app. T of report of chief, 1903. 1903. p. 306-324, 1237-73.

Arkansas. Annual report upon improvement of Arkansas River and rivers in Arkansas and Missouri, in charge of Graham D. Fitch; app. Y of report of chief, 1903. 1903. p. 376-389, 1407-40.

California. Annual report upon improvement of harbors in California, south of San Francisco, in charge of J. H. Willard and Edgar Jadwin; app. UU of report of chief, 1903. 1903. p. 575-579, 2171-80, map.

— Annual report upon improvement of rivers and harbors in California tributary to and north of San Francisco Bay, and of Pearl Harbor, Hawaii, in charge of W. H. Heuer; app. VV of report of chief, 1903. 1903. p. 579-593, 2181-2204.

Connecticut. Annual report upon improvement of rivers and harbors in Connecticut, and of Pawcatuck River, in charge of Chas. F. Powell; app. E of report of chief, 1903. 1903. p. 104-123, 831-855.

Cumberland River. Annual report upon improvement of Cumberland, Obion, and Forked Deer rivers, in charge of M. B. Adams and W. J. Barden; app. DD of report of chief, 1903. 1903. p. 410-417, 1579-89.

Delaware River. Annual report upon improvement of Delaware River and of certain works in Delaware Bay, in charge of C. W. Raymond, J. C. Sanford, and Spencer Cosby; app. I of report of chief, 1903. 1903. p. 159-165, 957-982.

District of Columbia. Annual report upon maintenance and repair of Washington Aqueduct, increasing water supply of Washington, and Washington Aqueduct filtration plant, in charge of A. M. Miller; app. DDD of report of chief, 1903. 1903. p. 654-658, 2485-2515.

— Annual report upon repair of Aqueduct Bridge, upon Memorial Bridge, and upon construction of highway bridge to replace Long Bridge across Potomac River at Washington, in charge of Chas. J. Allen; app. CCC of report of chief, 1903. 1903. p. 652-654, 2483, 2484.

Engineers. Annual reports upon battalions of engineers, engineer depots, Engineer School of Application, service of engineer officers abroad and with troops, and reconnaissances, explorations, and work in field; app. 2-4 and HHH of report of chief, 1903. 1903. p. iii-xxxii, 683-709, 2899-2917.

Erie, Lake. Annual report upon improvement of rivers and harbors on lake in Ohio, in charge of Dan C. Kingman; app. RR of report of chief, 1903. 1903. p. 542-557, 2049-2113, 2 pl.

Florida. Annual report upon improvement of rivers and harbors on eastern coast of Florida, and of harbor at Key West, and entrance thereto, in charge of Francis R. Shunk and Herbert Deakyne; app. Q of report of chief, 1903. 1903. p. 271-281, 1173-92, map.

- Florida—Continued. Annual report upon improvement of rivers and harbors on western coast of Florida south of and including Suwanee River, in charge of Francis R. Shunk and Herbert Deakyne; app. R of report of chief, 1903. 1903. p. 281-289, 1193-1205.
- Georgia. Annual report upon improvement of rivers and harbors in eastern Georgia, of inside water route between Savannah, Ga., and Fernandina, Fla., and of Cumberland Sound, in charge of James B. Quinn and Cassius E. Gillette; app. P of report of chief, 1903. 1903. p. 257-271, 1141-71.
- Annual report upon improvement of rivers and harbors in western Georgia and Florida and in eastern Alabama, in charge of J. B. Cavanaugh and R. R. Raymond; app. S of report of chief, 1903. 1903. p. 289-306, 1207-36.
- Government Printing Office. Annual report upon new building for office, in charge of John S. Sewell; app. III of report of chief, 1903. 1903. p. 673, 674, 2919-29.
- Great Lakes. Annual report upon improvement of waters connecting Great Lakes, in charge of Wm. H. Bixby; app. QQ of report of chief, 1903. 1903. p. 532-542, 2001-47, 2 maps.
- Illinois. Annual report upon improvement of Chicago and Calumet harbors, Ill., of Chicago River, and of Calumet River, survey of Illinois and Des Plaines rivers for waterway from Lockport, Ill., to St. Louis, Mo., in charge of O. H. Ernst; app. MM of report of chief, 1903. 1903. p. 491-495, 1887-1913, 1 pl. 6 maps.
- Annual report upon improvement of Illinois River and construction of Illinois and Mississippi Canal, in charge of J. H. Willard; app. NN of report of chief, 1903. 1903. p. 495-498, 1915-30.
- Kentucky. Annual report upon improvement of falls of Ohio River, of White River, Wabash River, and of rivers in Kentucky, in charge of E. H. Ruffner and Geo. McC. Derby; app. JJ of report of chief, 1903. 1903. p. 452-464, 1763-90.
- Louisiana. Annual report upon improvement of Homochitto River, and of rivers and harbors in southern Louisiana and eastern Texas, in charge of H. M. Adams and Chas. S. Bromwell; app. V of report of chief, 1903. 1903. p. 335-348, 1299-1319.
- Annual report upon improvement of passes of Mississippi River, of bayous Lafourche, Plaquemine, Courtableau, and Teche, and of Grand River and Pigeon bayous, La., in charge of H. M. Adams; app. U of report of chief, 1903. 1903. p. 324-335, 1275-97, 5 maps.
- Maine. Annual report upon improvement of rivers and harbors in Maine east of and including Portland Harbor, in charge of S. W. Roessler; app. A of report of chief, 1903. 1903. p. 37-54, 711-729.
- Annual report upon improvement of rivers and harbors in Maine south of Portland Harbor, in Vermont and New Hampshire, in Massachusetts north of Lynn Harbor, and in New York on Lake Champlain, in charge of Harry Taylor; app. B of report of chief, 1903. 1903. p. 54-73, 731-757.
- Massachusetts. Annual report upon improvement of rivers and harbors in eastern Massachusetts south of and including Lynn Harbor, in charge of W. S. Stanton; app. C of report of chief, 1903. 1903. p. 73-88, 759-785, map.
- Annual report upon improvement of rivers and harbors in southeastern Massachusetts and in Rhode Island, in charge of Geo. W. Goethals and Cassius E. Gillette; app. D of report of chief, 1903. 1903. p. 88-104, 787-830, 12 maps.
- Michigan. Annual report upon improvement of rivers and harbors on eastern coast of Michigan, in charge of Lansing H. Beach; app. PP of report of chief, 1903. 1903. p. 522-532, 1983-99, 14 maps.

- Michigan, Lake. Annual report upon improvement of Michigan City Harbor, Ind., and rivers and harbors on eastern shore of lake, in charge of M. B. Adams, J. G. Warren, and Charles Keller; app. OO of report of chief, 1903. 1903. p. 498-522, 1931-82.
- Annual report upon improvement of rivers and harbors on western shore of lake, in charge of J. G. Warren; app. LL of report of chief, 1903. 1903. p. 475-491, 1833-85, 8 maps.
- Mississippi River. Annual report upon construction of reservoirs at headwaters of Mississippi River, improvement of Mississippi River between St. Paul and Minneapolis, and between Brainerd and Grand Rapids, Minn., of rivers in Wisconsin and Minnesota tributary to Mississippi River, of Warroad River, and of Red River of the North and its tributaries, in charge of R. L. Hoxie; app. BB of report of chief, 1903. 1903. p. 396-405, 1523-50.
- Annual report upon improvement of rivers and waterways in Louisiana, Texas, Arkansas, Indian Territory, and Mississippi tributary to Mississippi River, in charge of Chas. L. Potter and Chas. S. Bromwell; app. X of report of chief, 1903. 1903. p. 361-376, 1363-1405.
- Annual report upon operating snag boats and dredge boats on Mississippi River, improvement of Mississippi River between Missouri River and St. Paul, Minn., and of La Crosse Harbor, Wis., operating and care of Galena River improvement, and of Illinois and Mississippi Canal around lower rapids of Rock River, at Milan, Ill., in charge of Jas. L. Lusk and C. McD. Townsend; app. AA of report of chief, 1903. 1903. p. 393-396, 1463-1521, 2 maps.
- Annual report upon removing snags and wrecks from Mississippi River, improvement of Mississippi River between Ohio and Missouri rivers, prevention of Mississippi River from breaking through into Cache River at Beechridge, above Cairo, Ill., in charge of Thos. L. Casey; app. Z of report of chief, 1903. 1903. p. 389-393, 1441-62.
- Missouri River. Annual report upon improvement of Missouri River, of Osage River, and of Gasconade River, in charge of H. M. Chittenden; app. CC of report of chief, 1903. 1903. p. 405-410, 1551-78.
- Muskingum River. Annual report upon improvement of Muskingum River, of Guyandot River, of Big Sandy River and its forks, and of Kentucky River, in charge of E. H. Ruffner; app. II of report of chief, 1903. 1903. p. 446-452, 1731-61, 1 pl.
- New Jersey. Annual report upon improvement of ice harbor at Marcus Hook, Pa., of rivers and harbors in southern New Jersey, in Delaware, and in Maryland on eastern shore of Chesapeake Bay, [and of] inland waterway from Chincoteague Bay to Delaware Bay, in charge of Jared A. Smith and J. C. Sanford; app. J of report of chief, 1903. 1903. p. 165-194, 983-1026.
- Annual report upon improvement of rivers and harbors in northeastern New Jersey, in charge of C. W. Raymond and Spencer Cosby; app. H of report of chief, 1903. 1903. p. 145-159, 927-956.
- New York. Annual report upon improvement of Erie Harbor, Pa., and of rivers and harbors in western New York, in charge of Thomas W. Symons and Theo. A. Bingham; app. SS of report of chief, 1903. 1903. p. 557-564, 2115-46, 4 maps.
- Annual report upon improvement of harbors on Lake Ontario and of St. Lawrence River and harbors thereon, N. Y., in charge of Thomas W. Symons and Theo. A. Bingham; app. TT of report of chief, 1903. 1903. p. 564-575, 2147-69, 3 maps.
- Annual report upon improvement of rivers and harbors in New York on Long Island Sound and on southern shore of Long Island, of Hudson River and harbors thereon, and of Harlem and East rivers, in charge of S. M. Mansfield and Amos Stickney; app. F of report of chief, 1903. 1903. p. 123-139, 857-908, 9 maps.

- New York Harbor. Annual report upon improvement of harbor, Bay Ridge, Red Hook, and Buttermilk channels, and Gowanus Creek Channel, enlargement of Governors Island, in charge of W. L. Marshall; app. G of report of chief, 1903. 1903. p. 139-145, 909-925, 5 maps.
- Annual report upon supervision of harbor, by Edward F. Qualtrough; app. ZZ of report of chief, 1903. 1903. p. 637, 2359-66.
- North Carolina. Annual report upon improvement of rivers and harbors in North Carolina, in charge of E. W. Van C. Lucas and E. Eveleth Winslow; app. N of report of chief, 1903. 1903. p. 228-242, 1091-1115.
- Ohio River. Annual report upon construction of locks and dams in Ohio River between Pennsylvania State line and Cincinnati, Ohio, and improvement of Kanawha, Little Kanawha, Elk, and Gauley rivers, W. Va., in charge of Geo. A. Zinn and W. E. Craighill; app. HH of report of chief, 1903. 1903. p. 440-446, 1713-29.
- Annual report upon improvement of Ohio River by open-channel work and construction of lock and dam 37, operating snag boat on river, in charge of G. J. Lydecker; app. FF of report of chief, 1903. 1903. p. 423-427, 1627-49.
- Oregon. Annual report upon improvement of rivers and harbors in western Oregon, of Columbia River above mouth of Willamette River, and of Snake River, in charge of W. C. Langfitt; app. WW of report of chief, 1903. 1903. p. 593-609, 2205-55, 2 maps.
- Patapsco River. Annual report upon improvement of river and Baltimore Harbor, Md., in charge of Peter C. Hains, W. A. Jones, and Chas. J. Allen; app. K of report of chief, 1903. 1903. p. 194-197, 1027-34.
- Pennsylvania. Annual report upon improvement of harbor at Pittsburgh, Pa., of Allegheny River, and of Monongahela River, construction of locks and dams 2-7, Ohio River, and operating and care of Davis Island dam, Ohio River, in charge of W. L. Sibert; app. GG of report of chief, 1903. 1903. p. 427-440, 1651-1711.
- Report. Annual report of chief, 1903. 1-676 + 52 pp.
- South Carolina. Annual report upon improvement of Waccamaw River and rivers and harbors in South Carolina, in charge of J. C. Sanford and G. P. Howell; app. O of report of chief, 1903. 1903. p. 242-257, 1117-40.
- Superior, Lake. Annual report upon improvement of rivers and harbors on lake, in charge of Lansing H. Beach and D. D. Gaillard; app. KK of report of chief, 1903. 1903. p. 464-475, 1791-1831, 10 maps.
- Tennessee River. Annual report upon improvement of river and its tributaries, in charge of John G. D. Knight and W. J. Barden; app. EE of report of chief, 1903. 1903. p. 417-423, 1591-1625.
- Texas. Annual report upon improvement of rivers and harbors in Texas, in charge of C. S. Riché; app. W of report of chief, 1903. 1903. p. 348-361, 1321-61.
- Virginia. Annual report upon improvement of Norfolk Harbor, Va., and its approaches, and of waterways and harbors in southeastern Virginia and northeastern North Carolina, in charge of James B. Quinn and E. Eveleth Winslow; app. M of report of chief, 1903. 1903. p. 219-228, 1073-90.
- Annual report upon improvement of Potomac River and its tributaries, of James River and harbor at Milford Haven, and rivers in Maryland and Virginia on western and eastern shores of Chesapeake Bay, protection of Jamestown Island, in charge of Chas. J. Allen; app. L of report of chief, 1903. 1903. p. 197-219, 1035-72, 4 maps.

- Washington Barracks. Annual report upon buildings, Army War College, and Engineer School [of Application], Washington, D. C., in charge of John S. Sewell; app. JJJ of report of chief, 1903. 1903. p. 674, 675, 2931-36.
- Washington State. Annual report upon improvement of rivers and harbors in Washington, in charge of John Millis; app. YY of report of chief, 1903. 1903. p. 620-636, 2323-57, 9 maps.
- Willamette River. Annual report upon improvement of Willamette River, and of Columbia River below mouth of Willamette, and their tributaries, in charge of W. C. Langfitt; app. XX of report of chief, 1903. 1903. p. 609-620, 2257-2321, 22 pl. 28 maps.
- Wyoming. Annual reports upon roads and bridges in Yellowstone National Park, military road from Fort Washakie to mouth of Buffalo Fork of Snake River, in charge of Hiram M. Chittenden; app. GGG and KKK of report of chief, 1903. 1903. p. iii-v, 2885-98, 2937.

CALIFORNIA DÉBRIS COMMISSION

- Annual report, 1903; app. AAA of report of chief of engineers, 1903. 1903. p. iii, iv, 2367-70.

ENGINEER TROOPS

- Historical sketch of 1st Battalion of Engineers during its tour abroad [in Philippine Islands], Smith S. Leach, commanding. Press of Engineer School of Application, Washington Barracks, D. C., 1903. [iv] + 27 pp. (Engineer School of Application. Occasional papers [7, erroneously printed as] 6.)

NORTHERN AND NORTHWESTERN LAKES SURVEY

NOTE.—Lake Survey charts may be obtained from U. S. Lake Survey Office, Detroit, Mich., or from U. S. Engineer Office, Buffalo, N. Y. Payments must be made before charts are sent, and if made by mail must be by postal or express money order payable to the order of U. S. Lake Survey Office if ordered from Detroit, or to the order of U. S. Engineer Office if ordered from Buffalo. These charts may also be obtained, for cash only, at U. S. Canal Office at Sault Ste. Marie, Mich. They will be sent by express, the express charges to be paid by the purchaser on receipt of the charts, or free by mail at the purchaser's risk. Purchasers should indicate, when ordering the charts, whether they wish them sent by express or mail. The latter will be used when no choice is indicated.

The bulletins and supplements of the Lake Survey may be obtained free upon application at U. S. Lake Survey Office, Detroit, Mich., and at the engineer offices in Duluth, Milwaukee, Chicago, Grand Rapids, Cleveland, Buffalo, and Oswego.

- Annual report upon survey of northern and northwestern lakes; app. FFF of report of chief of engineers, 1903. 1903. p. 660-665, 2671-2884, 32 pl. 5 maps.
- Supplement 7, 1903, corrections and additions to bulletin 13, a, Lake Superior and St. Marys River; b, Lake Michigan and Green Bay; c, Lake Huron, St. Clair River, Lake St. Clair, Detroit River; d, Lake Erie and Niagara River to Niagara Falls; e, Niagara River below Niagara Falls, Lake Ontario, St. Lawrence River: to supplement information given upon charts of Great Lakes. Nov. 16, 1903. 16 pp. 4°

GETTYSBURG NATIONAL PARK COMMISSION

- Letter calling attention to omission of provision for monument to Battery E, 4th Artillery, at Gettysburg, and draft of bill to remedy omission. Nov. 23, 1903. 2 pp. (S. doc. 13, 58th Cong. 1st sess.)

INSULAR AFFAIRS BUREAU

- Monthly summary of commerce of Philippine Islands, June, 1903; no. 12, series 1902-03. p. 1425-1553, 4°
 Primer and vocabulary of Moro dialect, Magindananu; by R. S. Porter. Oct. 1903. 77 pp. (War Dept. doc. 209.) *Paper, 5c

MEDICAL DEPARTMENT

- Circular of information in relation to appointment in Medical Corps of Army, requisite qualifications, examination of applicants, etc. [Oct. 19, 1903.] 10 pp. 12°

ORDNANCE DEPARTMENT

- Annual report of chief, 1903. 1903. 60 pp.

PHILIPPINE ISLANDS

- Official Gazette, v. 1, nos. 55-58; Sept. 23-Oct. 14, 1903. Manila. p. 679-744, 4° [Weekly.]
 Same, Spanish. p. 679-743, 4°

NOTE.—The Official Gazette will be furnished to subscribers, free of postage, at the rate of 15c single copy, \$6.00 a yr. Send remittances by postal money order or registered letter to Max L. McCollough, editor Official Gazette, Manila, P. I.

- Public laws and resolutions passed by Philippine Commission during quarter ending Aug. 31, 1903. Manila, 1903. v. 12, x + 262 pp.

NOTE.—By order of the Philippine Commission, the quarterly publication of Public laws and resolutions passed by Philippine Commission, beginning with v. 9, for quarter ending Nov. 30, 1902, will be issued in 2 pamphlets, 1 English and 1 Spanish, for sale by the secretary of the commission at \$1.00 in Philippine currency each. The quarterly volumes preceding v. 9, both languages included, are for sale by the secretary of the commission at \$1.50 in Philippine currency per volume. Address the secretary of the Philippine Commission, Manila, P. I.

AGRICULTURE, BUREAU OF

- Botanical work in Philippines [with bibliography]; by Elmer D. Merrill. Manila, Sept. 25, 1903. 53 pp. 1 pl. large 8° (Bulletin 4.)

MINING BUREAU

- Complete list of Spanish mining claims recorded in bureau; by Chas. H. Burritt. Manila, 1903. 25 pp. (Bulletin 2.)
 Platinum and associated rare metals in placer formations, information for prospectors and placer miners; by H. D. McCaskey. Manila, 1902. 8 pp. (Bulletin 1.)

WEATHER BUREAU

- Bulletin, May, 1903. Manila, 1903. p. 107-138, 1 il. 4° [English and Spanish.]

NOTE.—Contains meteorological data, notes on weather, magnetic and seismic disturbances, and crops of Philippine Islands. Special article is, Observations on insects affecting crops in Philippines; by William A. Stanton.

QUARTERMASTER'S DEPARTMENT

- Annual report of quartermaster-general, 1903. 1903. 30 pp.

SIGNAL OFFICE

Annual report of chief signal officer, 1903. 1903. 36 pp. map.

Maps

Signal Corps telegraph system in Alaska and Canadian line connecting with United States, scale 60 m.=1 in.; with inset, Continuation of Canadian line, scale 70 m.=1 in. July, 1903. 17.4 × 25.1 and 8.1 × 7.5 in.

Courts of United States

COURT OF CLAIMS

- Felicity, schooner. Conclusions of law and fact in French spoliation cases [of Anne T. Floyd and David Stewart, administrators of Isaac Smith, surviving partner of Thoroughgood & Isaac Smith, for seizure of] schooner, William Story, master. Nov. 27, 1903. 2 pp. (H. doc. 15, 58th Cong. 1st sess.)
- Franklin, Tenn. Findings in case of St. Paul's Episcopal Church of Franklin. Nov. 12, 1903. 2 pp. (S. doc. 4, 58th Cong. 1st sess.)
- Huttonsville, W. Va. Findings in case of trustees of Presbyterian Church, Huttonsville. Nov. 23, 1903. 2 pp. (S. doc. 15, 58th Cong. 1st sess.)
- Landram. Findings in case of Louis Landram [administrator of William J. Landram]. Nov. 23, 1903. 2 pp. (S. doc. 14, 58th Cong. 1st sess.)
- Munt. Findings in case of Mary C. Munt, administratrix of John H. Munt. Nov. 18, 1903. 2 pp. (H. doc. 11, 58th Cong. 1st sess.)
- Seaman's Friend Society. Findings in case of Seaman's Friend Society of Wilmington, N. C. Nov. 12, 1903. 2 pp. (S. doc. 5, 58th Cong. 1st sess.)
- Seymour, ship. Conclusions of law and fact in French spoliation cases [of Rebecca Snowden Marshall and Charles Marshall, administrators of Jonathan Hudson, surviving partner of Holmes, Hudson & Co., and John Stewart, receiver of Baltimore Insurance Company, for seizure of] ship, Paul Gould, master. Nov. 27, 1903. 3 pp. (H. doc. 14, 58th Cong. 1st sess.)
- Sharpsburg, Md. Findings in case of trustees of Reformed Church of Sharpsburg. Nov. 12, 1903. 2 pp. (S. doc. 6, 58th Cong. 1st sess.)
- Warwick. Findings in case of Emma N. Warwick, administratrix of John W. Warwick. Nov. 20, 1903. 2 pp. (S. doc. 11, 58th Cong. 1st sess.)

District of Columbia

- Electrical Department. Annual report, 1903. 1903. 16 pp.
- Engineer Department. Report of operations, 1903. xi + 128 pp. 3 tab.
- Fire Department. [18th] report of chief [with reports of other officers], 1903. 1903. 21 pp.
- Medical supervisors. [6th] report, 1903. 1903. 15 pp.
- Taxes. Report of collector of taxes, 1903. 1903. 10 pp.

Smithsonian Institution

NOTE.—In its latest price-list the Smithsonian Institution publishes this note: "The publications of the Smithsonian Institution are, 1, Contributions to Knowledge; 2, Miscellaneous Collections; 3, annual reports; 4, special papers. No sets of these are for sale or distribution, as most of the volumes are out of print. The volumes of Contributions and Collections are distributed only to designated public libraries and learned institutions in this country and abroad. A small edition of the papers in these two series is printed separately for sale or exchange. The Smithsonian reports are distributed by the Institution to libraries throughout the world; may be had by purchase at cost from the Superintendent of Documents, and may also generally be obtained free of charge from the applicant's Member of Congress." The annual reports are the only Smithsonian publications that are regularly issued as public documents. All the others are paid for from the private funds of the Institution. Separates from the reports are for exchange, and for free distribution, but not for sale. The annual reports are included in the Congressional set.

Smithsonian contributions to knowledge, v. 29 [title-page, contents etc.]. 1903. xi pp. f° ([Publication 976.]

Various Bureaus

FISH COMMISSION

NOTE.—Transferred July 1, 1903, to Commerce and Labor Department under the name of Fisheries Bureau. See page 425.

GOVERNMENT PRINTING OFFICE

DOCUMENTS OFFICE

9th annual report of superintendent of documents, 1903. 1903. 64 pp.
Catalogue of United States Public Documents, monthly, no. 106; Oct. 1903. 1903. 383-413+xx pp. * Paper, \$1.10 a yr
57th Congress, 2d session, Dec. 1, 1902-Mar. 4, 1903; index to subjects of documents and reports and to committees, Senators, and Representatives presenting them, with tables of same in numerical order. 1903. 250 pp. (H. doc. 495, 57th Cong. 2d sess.) * Cloth, 25c

INTERSTATE COMMERCE COMMISSION

NOTE.—The Commission furnishes its reports gratuitously to those who apply for them.

Accident bulletin 8, showing collisions and derailments of trains and casualties to persons, Apr.-June, 1903, with tables for 1903. 1903. 14+[1] pp.

Apportionment of railroad cars to competing coal mines, in United States circuit court, northern district of West Virginia, United States, ex rel. Kingwood Coal Company, v. West Virginia Northern Railroad Company; [decided Oct. 15, 1903]; opinion of Nathan Goff. [1903.] 7 pp.

LABOR DEPARTMENT

NOTE.—Transferred July 1, 1903, to Commerce and Labor Department under the name of Labor Bureau. See page 425.

LIBRARY OF CONGRESS

Bibliography of Philippine Islands; published under direction of library and Bureau of Insular Affairs. 1903. [2 pts. in 1 v.] xxi+397+439 pp. (S. doc. 74, 57th Cong. 2d sess.) [Includes Mariana or Ladrone

Islands. This work was originally intended as appendix to Pronouncing gazetteer and geographical dictionary of Philippine Islands, which was issued as Senate document 280, 57th Congress, 1st session, for which see Catalogue for Nov. 1902, page 614.] * Cloth, 60c

Contents:

Biblioteca Filipina; por T. H. Pardo de Tavera. pt. 2.

List of books, with references to periodicals, on Philippine Islands, in Library of Congress, by A. P. C. Griffin; with Chronological list of maps in library, by P. L. Phillips. pt. 1.

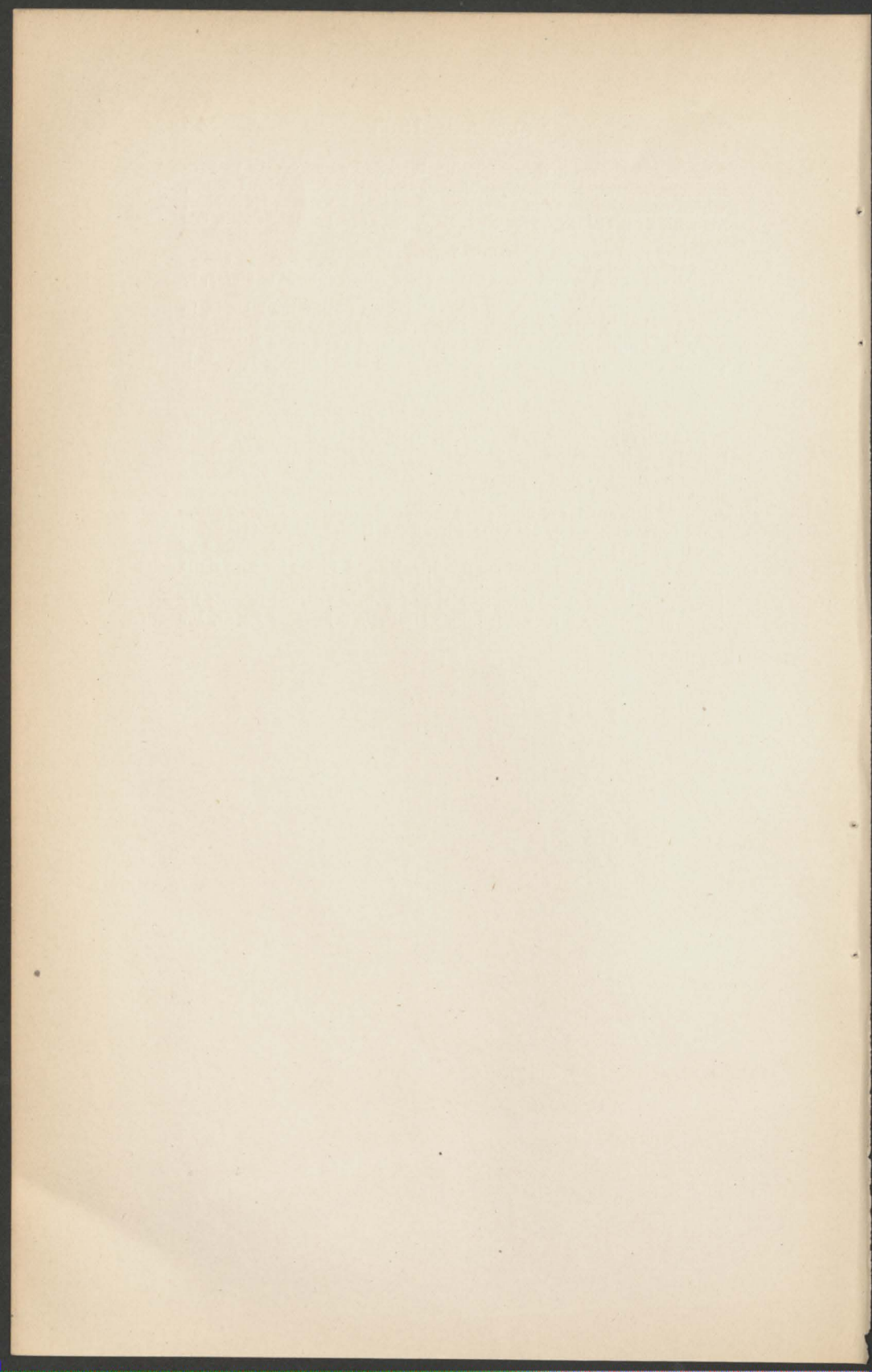
List of books, with references to periodicals, on Philippine Islands, in library, by A. P. C. Griffin; with Chronological list of maps in library, by P. Lee Phillips. 1903. xv+397 pp. large 8° [From Bibliography of Philippine Islands. Includes Mariana or Ladrone Islands.]

COPYRIGHT OFFICE

NOTE.—The Catalogue of Title Entries is prepared by the Register of Copyrights and published by the Treasury Department. It is not sold by the Treasury Department, the Librarian of Congress, nor the Register of Copyrights, but must be subscribed for at the office of the collector of customs for the district in which the person desiring it lives. The price is \$5.00 per year of 52 numbers. The bulletins of the office are sent free on application to the Register of Copyrights.

Catalogue of title entries of books and other articles entered under copyright law; whole nos. 644-647; Nov. 5-25, 1903. 1903. 417-740+ [liv] pp. [Weekly.] Paper, \$5.00 a yr

Copyright in Canada and Newfoundland, rules and forms for copyright registration in Canada, with copyright laws of Canada, Newfoundland, New Brunswick, Nova Scotia, and Prince Edward Island; by Thorvald Solberg. 1903. 126 pp. (Bulletin 6.) * Paper, 10c



Shipments to Depositories

During the Month of November, 1903

NOTE.—Shipment numbers run from 1 to 49, inclusive, and then begin again with 1.

Shipment 16

Congress. 57th Congress, 1st session. House documents, v. 58. Nos. 42, 353, 525, 683; Exports declared, Apr. 1901–Mar. 1902; no. 639; Exports declared, July, 1900–June, 1901. (Serial no. 4325.)

Shipment 17

Congress. 57th Congress, 1st session. House documents, v. 67. No. 553, 4 pts.; Consular Reports, May–Aug. 1902, v. 69, nos. 260–263. (Serial no. 4334.)

Shipment 18

Congress. 57th Congress, 1st session. House documents, v. 68. No. 710, 4 pts.; Consular Reports, Sept.–Dec. 1902, v. 70, nos. 264–267. (Serial no. 4335.)
— Same, v. 99. Nos. 467–469; Geological Survey bulletins 185–187. (Serial no. 4366.)

Shipment 19

Congress. 57th Congress, 1st session. House documents, v. 69. No. 708, 2 pts.; Special Consular Reports, v. 23, 2 pts.; Gas engines, Silverware. (Serial no. 4336.)
— 57th Congress, 2d session. House reports, v. 1. Nos. 2751–3157; miscellaneous. (Serial no. 4413.)

Shipment 20

Congress. 57th Congress, 1st session. House documents, v. 100. Nos. 470 and 471; Geological Survey bulletins 188 and 189. (Serial no. 4367.)

Shipment 21

Congress. 57th Congress, 2d session. Congressional Record, proceedings and debates of 57th Congress, 2d session, v. 36 [pt. 3; Feb. 14–Mar. 4, 1903, with appendix]. 1903. [3] + 2177–3078 + 210 pp. il. 4°

Shipment 22

Congress. 57th Congress, 1st session. House documents, v. 97. No. 461; Geological Survey bulletin 179. (Serial no. 4364.)

Shipment 23

- Animal Industry Bureau (Department of Agriculture). German meat regulations [translated by Annette M. Dye], with original text. 1903. 51 pp. 8° (Bulletin 50.)
- Horseshoeing; by John W. Adams. 1903. 31 pp. 18 il. 8° (Farmers' bulletin 179.)
- Biological Survey Division (Department of Agriculture). Game laws for 1903, summary of provisions relating to seasons, shipment, sale, and licenses; by T. S. Palmer, Henry Oldys, and R. W. Williams, jr. 1903. 56 pp. 5 il. 8° (Farmers' bulletin 180.)
- Cavalry and Field Artillery School (Adjutant-General, Army, War Department). Army horse in accident and disease [with bibliography]; by Alexander Plummer and Richard H. Power. 1903. 91 pp. 12°
- Chemistry Bureau (Department of Agriculture). Olive oil and its substitutes; by L. M. Tolman and L. S. Munson. 1903. 64 pp. 2 pl. 8° (Bulletin 77.)
- Congress. 57th Congress, 2d session. House reports, v. 3. Nos. 3512-3919; miscellaneous. (Serial no. 4415.)
- Experiment Stations Office (Department of Agriculture). Experiment Station Record, v. 15, no. 2; Oct. 1903. 1903. viii+105-208 pp. 8°
- Few good books and bulletins on nature study, school gardening, and elementary agriculture for common schools; by D. J. Crosby. [Nov. 13, 1903.] 4 pp. 8° (Circular 52.)
- Functions and uses of food; by C. F. Langworthy. [Oct. 6, 1903.] 10 pp. 8° (Circular 46 revised.)
- List of publications of office on food and nutrition of man. Oct. 15, 1903. 11 pp. 8° ([Publication] 238 revised [8th edition].)
- List of publications of office on irrigation. Oct. 15, 1903. 7 pp. 8° ([Publication] 358 revised.)
- Publications Division (Department of Agriculture). List of bulletins and circulars issued by Department of Agriculture and available for free distribution; corrected to Sept. 15, 1903. 31 pp. 8° ([Publication] 247, 9th edition.)
- Soils Bureau (Department of Agriculture). Reclamation of salt marsh lands. Oct. 1903. 10 pp. 8° (Circular 8, revised edition.)

Shipment 24

- Census Office (Interior Department). 12th census of United States, 1900, statistical atlas; Henry Gannett, geographer. 1903. 91 pp. 59 pl. 84 pp. of pl. 64 maps, 4°

Shipment 25

- Congress. 57th Congress, 1st session. House documents, v. 39. No. 10; Report of comptroller of currency, 1901, v. 2. (Serial no. 4306.)

Shipment 26

- Congress. 57th Congress, 1st session. House documents, v. 44. No. 14; Navigation Bureau, Treasury Department, report, 1901. (Serial no. 4311.)
- 57th Congress, 2d session. House reports, v. 2. Nos. 3158-3511; miscellaneous. (Serial no. 4414.)

Shipment 27

- Congress. 57th Congress, 1st session. House documents, v. 40. No. 11; Internal revenue report, 1901. (Serial no. 4307.)
— Same, v. 98. Nos. 462-466; Geological Survey bulletins 180-184. (Serial no. 4365.)

Shipment 28

- Congress. 57th Congress, 1st session. House documents, v. 37. No. 9; Report of Attorney-General, 1901. (Serial no. 4304.)
— Same, v. 38. No. 10; Report of comptroller of currency, 1901, v. 1. (Serial no. 4305.)

Shipment 29

- Congress. 57th Congress, 1st session. House documents, v. 102. Nos. 635, 693-701; Geological Survey bulletins 194-203. (Serial no. 4369.)
Entomology Division (Department of Agriculture). Peach-tree borer, *sannina exitiosa* Say; by C. L. Marlatt. [Oct. 19, 1903.] 6 pp. 1 il. 8° (Circular 54.)
— Use of hydrocyanic acid gas for fumigating greenhouses and cold frames. [Oct. 2, 1903.] 10 pp. 3 il. 8° (Circular 37, revised edition.)
Publications Division (Department of Agriculture). Monthly list of publications [of Department of Agriculture], Oct. 1903. Oct. 31, 1903. 4 pp. 8° ([Publication] 473.)
Soils Bureau (Department of Agriculture). Applications for reports of Field operations [of bureau, 1899-1902, to be filled by separate reprints therefrom, with list of reports and separates]. [1903.] 4 pp. 8°

Shipment 30

- Congress. 57th Congress, 1st session. House documents, v. 50. No. 17; Mineral Resources, 1900. (Serial no. 4317.)
— Same, v. 101. Nos. 472-475; Geological Survey bulletins 190-193. (Serial no. 4368.)

Shipment 31

- Congress. 57th Congress, 1st session. House documents, v. 45. No. 15, pts. 1-3; Commerce and Finance, July-Sept. 1901. (Serial no. 4312.)

Shipment 32

- Congress. 57th Congress, 1st session. House documents, v. 55. Nos. 21-136, except 29, 35, 39, 41, 42, 50, 52-61, 64, 88; miscellaneous. (Serial no. 4322.)

Shipment 33

- Congress. 57th Congress, 1st session. House documents, v. 61. Nos. 53-60, 481-484; Water-supply and irrigation papers 53-64. (Serial no. 4328.)

Shipment 34

- Congress. 57th Congress, 1st session. House documents, v. 46. No. 15, pts. 4-6; Commerce and Finance, Oct.-Dec. 1901. (Serial no. 4313.)

Shipment 35

- Congress. 57th Congress, 1st session. Senate documents, v. 2. Nos. 2-61, except 4, 20, 35, 50, 54; Government Printing Office report, 1901; miscellaneous; no. 1, special session, Senate. (Serial no. 4220.)

Congress—Continued. 58th Congress, extraordinary session, official Congressional directory; by A. J. Halford. Special edition, corrections to Nov. 5, 1903. xix + 417 pp. il. 1 pl. map, 8°

Copyright Office (Library of Congress). Copyright in Canada and Newfoundland, rules and forms for copyright registration in Canada, with copyright laws of Canada, Newfoundland, New Brunswick, Nova Scotia, and Prince Edward Island; by Thorvald Solberg. 1903. 126 pp. 8° (Bulletin 6.)

Shipment 36

Congress. 57th Congress, 1st session. House documents, v. 47. No. 15, pts. 7-9; Commerce and Finance, Jan.-Mar. 1902. (Serial no. 4314.)

Shipment 37

Congress. 57th Congress, 1st session. House documents, v. 48. No. 15, pts. 10-12; Commerce and Finance, Apr.-June, 1902. (Serial no. 4315.)

Shipment 38

Congress. 57th Congress, 1st session. House documents, v. 51. No. 18; Labor Department, 16th annual report, 1901, Strikes and lock-outs. (Serial no. 4318.)

— Same, v. 84. No. 275; Precious metals, 1900. (Serial no. 4351.)

Shipment 39

Congress. 57th Congress, 1st session. House documents, v. 85. No. 283; Naval War Records, series 1, v. 13. (Serial no. 4352.)

Shipment 40

Congress. 57th Congress, 1st session. House documents, v. 53. No. 19; Weather Bureau report, 1901, v. 2, Barometry. (Serial no. 4320.)

Shipment 41

Congress. 57th Congress, 1st session. House documents, v. 88. No. 306, pts. 1-6; American Republics Bureau monthly bulletin, Jan.-June, 1902, v. 12. (Serial no. 4355.)

Shipment 42

Congress. 57th Congress, 1st session. House documents, v. 60. No. 52; Commission to Revise and Compile Laws of Porto Rico. (Serial no. 4327.)

Public Health and Marine Hospital Service (Treasury Department). Annual report of surgeon-general, 1902. 1903. 487 pp. il. 29 pl. 8°

Shipment 43

Animal Industry Bureau (Department of Agriculture). Information concerning common goats. Oct. 1, 1903. 14 pp. 8° (Circular 42.)

Congress. 57th Congress, 1st session. House documents, v. 49. No. 16; 33d list of merchant vessels, 1901. (Serial no. 4316.)

Entomology Division (Department of Agriculture). Codling moth [with bibliography]; by C. B. Simpson. 1903. 105 pp. 19 il. 15 pl. map, 8° (Bulletin 41.)

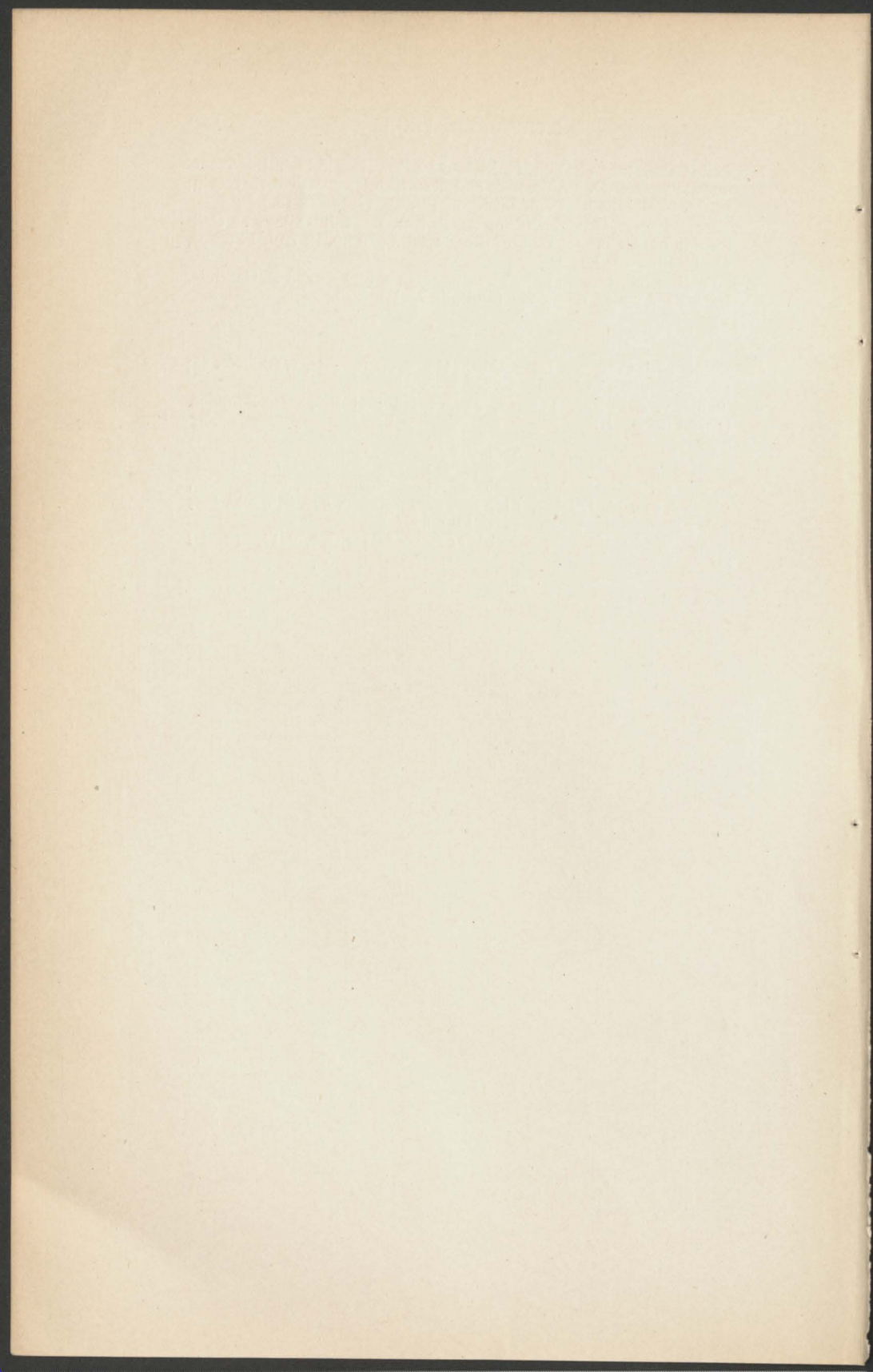
- Hygienic Laboratory (Public Health and Marine Hospital Service, Treasury Department). Antiseptic and germicidal properties of glycerin; by M. J. Rosenau. Sept. 1903. 30 pp. 8° (Bulletin 16.)
- Weather Bureau (Department of Agriculture). Climatology of California; by Alexander G. McAdie. 1903. 270 pp. il. 7 pl. 12 maps, 4° (Bulletin L.)
- Weather folk-lore and local weather signs; by Edward B. Garriott. 1903. 153 pp. 21 maps, 8° (Bulletin 33.)

Shipment 44

- Congress. 57th Congress, 1st session. House documents, v. 63. No. 88; House manual. (Serial no. 4330.)
- Same, v. 64. Nos. 138-167, except 145 and 152; miscellaneous. (Serial no. 4331.)

Shipment 45

- Congress. 57th Congress, 1st session. House documents, v. 70. Nos. 168-372, except 176-187, 244, 250, 275, 283, 305, 306, 310, 320, 334, 336, 353; miscellaneous. (Serial no. 4337.)
- Same, v. 86. No. 681; Naval War Records, series 1, v. 14. (Serial no. 4353.)



INDEX

TO THE CATALOGUES FOR JULY-NOVEMBER, 1903

[Names of Senators, Representatives, and Delegates in Congress are printed in *Italics*.]

	Page		Page
Abaca.....	323	Agriculture Dept.....	308, 336, 360, 387, 421
Abarenda, U. S. S.....	371	bulletins and circulars.....	389
Abbeville, S. C.....	389	organization.....	363
Abbott, W. L.....	324, 351	publications.....	310, 337, 363, 389, 423
Aboma.....	325	report, 1903.....	421
Abrasive materials.....	395	Agronomy.....	361
Abscesses, appendiceal.....	375	Air.....	407
Accident bulletin.....	352, 442	electricity in.....	310
Accidents, railroads.....	352, 442	relation of sun spots to.....	390
Accounts, Treasury Department.....	433	Air brakes.....	352
Acetylene, alcohol from.....	365	Ajiro Bay, <i>see</i> Nishitomari Wan.	
Acre question.....	317, 344, 372	Akarkine.....	393
Acrotreta.....	324	Akron & Columbus Railway Co.....	352
Acting solicitor, Com. and Labor Dept.....	366	Alabama, cement.....	427
Acts, <i>see</i> Laws.		mail contracts.....	372, 399
Actuary, Govt., <i>see</i> Govt. Actuary.		river and harbor improvement.....	435, 436
Adjutant-General.....	321, 348, 376, 403, 434	Alaska.....	367
Administration, colonial.....	375	chart.....	392
Adulteration of food.....	393	game.....	361, 373
Advance sheets of consular reports, <i>see</i> Daily consular reports.		hydroids.....	324, 351
Aërial navigation.....	406	reindeer.....	407
Aëronautics, <i>see</i> Aërial navigation.		Signal Corps telegraph system.....	441
Africa, British west.....	426	Albatross, Fish Commission steamer.....	380
German southwest, foreign trade.....	425	Albay Gulf, chart.....	347
progress in.....	318	Alcohol, from acetylene.....	365
railroads.....	318	Alcohol appliances.....	318
south, American cattle.....	426	Alfalfa.....	388
south, American competition in.....	365	Algae, plankton.....	352
south, cotton goods.....	318, 365	Algeria, fishing.....	339
south, imports.....	425	Alkali lands, reclamation.....	363
south, machinery.....	426	Alkaline waters for irrigation.....	310
south, plant introduction from.....	309	Allegheny River.....	438
southeast, steamships to.....	394	Alliance, U. S. S.....	315
Afton, Ind. T.....	379	Almeria, Spain.....	318
Agrarian Institute.....	373	Amazon River.....	432
Agric. Chemists, Official, Assoc. of.....	308	Ambulance Corps, New South Wales.....	425
Agric. colleges, financial officers.....	401	American Historical Association.....	378
instruction in agronomy.....	361	report, 1902.....	378
Agric. experiment stations.....	388	American Historical Review.....	378
financial officers.....	401	American Library Assoc., catalogue.....	427
Agric. Inst. of University of Göttingen.....	361	American Nautical Almanac, 1904.....	371
Agric. lands, Chippewa.....	397	American practical navigator.....	316
Cuba.....	318	American Public Health Assoc.....	391
Agricultural machinery.....	393	Amer. Republics Bur.....	317, 344, 372, 400, 432
Agricultural museums.....	373	American Society of Church History.....	378
Agriculture, Ecuador.....	345	American Veterinary Medical Assoc.....	389
elementary.....	389	Ammunition, supplying infantry.....	404
Guatemala.....	345	Amnesty, Nicaragua.....	345
Hebrew school of.....	318	Amphipoda.....	323, 351
instruction in.....	361	Anchyllostomiasis.....	348
Peru.....	318	Andalusia.....	318
products, Argentina.....	317	Andaman Islands, birds.....	324
products, Belgium.....	336	Angat River.....	350
products, exports.....	309	Anglo-Belgian telephone.....	366
products, German imports.....	423	Angora goats, diseases.....	361
products, imports.....	309	Angstrom pyrheliometer.....	337, 363
products, Mexican exports.....	400	Animal industry, <i>see</i> Animal Industry Bureau.	
products, Nicaragua.....	318	Animal Industry Bur.....	308, 336, 361, 388, 421
schools in Quebec.....	425	bulletins.....	308
Agriculture Bur., P. I. 1.....	322, 349, 377, 405, 440	orders.....	308, 360, 387
report, 1902.....	405	report, 1902.....	388

	Page		Page
Animal products, imports and exports.	388	Atchison, Topeka and Santa Fe Ry. Co.	352
Animals, aquatic.	408	Athenia, N. J.	388
diseases.	388	Atlanta, U. S. S.	397
diseases affecting public health.	388	Atlantic Coast, coast pilot.	319, 391
domestic, Cuban tariff on.	372	fisheries.	408
exportation.	308, 387	lights and fog signals.	375
imports and exports.	388	pilot rules.	340
wild, importation of.	346	tide tables.	311
Ankles, horses.	421	Atlantic Ocean, pilot charts.	316, 343, 398
Anthropoid apes.	407	walrus.	351
Anthropology.	379	Atlas Anchorage, chart.	343
Antagoniidae.	379	Atlases, <i>see</i> Maps and charts.	
Antimasonic party.	378	Atmosphere, <i>see</i> Air.	
Antiseptics, ferrous sulphate.	347	Attorney-General, <i>see</i> Justice Dept.	
glycerin.	434	Attorney-General, Assistant, for Court	
Antwerp, Belgium, ivory.	394	of Claims, report, 1903.	428
Apes, anthropoid.	407	Attorneys, Hungarian, in U. S.	393
Appeals.	323	patent, list of.	370
Appendical abscess.	375	Auditor for Interior Dept., rp., 1903.	346
Appendicitis.	375	Auditor for Navy Dept., rp., 1903.	374
Apples, bitter rot.	309	Auditor for Post-Office Department,	
Appointments Division.	319, 373, 401	report, 1903.	433
Appraisalment, of merchandise.	346	Auditor for State and other Depts.	401
Appraisers.	319, 346, 374, 401, 433	report, 1903.	401
decisions.	319, 346, 374, 401, 433	Auditor for Treasury Dept.	374, 402, 433
report, 1903.	433	report, 1903.	319
Aquarius forest reserve.	387	Auditor for War Department, rp., 1903.	346
Aquatic animals, skins.	408	Aurora borealis.	406
Aquatic products.	408	Australasia, rubber.	365
Aqueduct Bridge, D. C.	435	Australia, aqueduct.	318
Aqueducts, Australia.	318	flour and wheat.	393
Archæology, Arizona.	379	steamship service.	426
Architect, Supervising, report, 1903.	433	trees.	366
Archives, Oregon.	378	Austria, beet sugar.	393
Texas.	378	brewing.	393
Arctic regions, chart.	429	cotton-manufacturing industry.	393
Area, of colonies of world.	375	electric lights on railway trains.	426
Argentina.	317, 344, 372, 400, 432	hops.	394
animal industry.	361	raising of canal-boats.	318
butter.	365	trade relations with Mexico.	432
Argentine Republic, <i>see</i> Argentina.		Automatic couplers.	365
Argulidae.	325	Automobiles.	393
Arimao River, bridge.	339	Amer., in Malaga.	365
Arizona, archæology.	379	Autumn, coloration of foliage.	337
orthoptera.	324, 351	Babylon, L. I., topographic sheet.	314
spiders.	325	Bacillus enteritidis.	388, 421
Arkansas, river improvement.	435, 437	Bacillus icteroides.	375
Arkansas Hot Springs Reservation, <i>see</i>		Bacillus pestis.	434
Hot Springs, Ark., Reservation.		Bacteria, truffle.	380
Arkansas River.	435	Bacteria beds, sewerage on.	394
Arkansas Valley.	389	Bacteriology.	430
Armor-plate.	343	Bagdad Railway.	339
Army.	321, 348, 376, 404	Bahama Islands, meteorology.	363
discharge of enlisted men.	434	Bahia (state), cocoa trees.	432
for enforcement of laws.	434	Bahia Honda, Cuba.	400
historical register & dictionary.	321, 348	Balloons.	363
manœuvres.	321	Baltic ports, steamship service to.	340
officers, lists of.	321, 348, 376, 403, 434	Baltimore, Md., harbor improvement.	438
regulations.	350	Baltimore Insurance Company.	441
Army Corps.	321	Bamboos, Japanese.	309
Army War College.	439	Band-fishes.	351
Arsenals, <i>see</i> names of arsenals.		Bank, use of word in Mexico.	317
Artesian wells.	365	Bank-notes, Guatemala.	372
Articles of Confederation.	359	Bankruptcy, Argentina.	317, 344, 372
Artillery, 4th Regiment, Battery E.	439	Banks and banking, Argentina.	344
Asbestos.	340	Banner Hill, topographic sheet.	314
Ash, white.	336	Baoussé-Roussé explorations.	407
Asheville, N. C.	363	Baptornis.	351
Asia, German trade with.	426	Barbados, fishes.	324
Asia Minor, German trade in.	339	Barber, H.	325
Asiatic waters, typhoons.	316, 343, 371	Barbuda Island.	339
Asphalt.	313	Barites.	341
Association of Official Agricultural		Barrett, John.	317
Chemists.	308	Barytes, <i>see</i> Barites.	
Assuan, Egypt.	407	Bass.	380
Astartidae.	324, 351	Batangas-Calamba road.	404
Astronomy, nautical.	316	Batavia, Java, quinine auction.	339
Asturias, Spain.	339	Bats, lasiurine.	351
Asunción, Paraguay.	432	Battalion of Engineers, 1st.	404, 439
Atacama, Chile.	432	Batteries, galvanic.	393

	Page		Page
Battle-ships, <i>see</i> War-ships.		Birds.	324
Bavaria, horse insurance.	365	Birds, fossils.	351
Bay, <i>see</i> name of bay.		importation of.	346
Bay Ridge Channel, N. Y. Harbor.	438	Laysan and Leeward islands.	380
Bayou, <i>see</i> name of bayou.		protection of.	361
Beacons, lists of.	320, 367, 425	Sumatra.	351
Beaufort County, S. C.	362	Bitter rot.	309
Beaver Island, chart.	376	Bitumen, as road material.	362
Beechridge, Ill.	437	Bituminous rock.	313
Beef cattle, fattening.	388	Black cherry-trees.	362
Beet balls.	361	Black Mountain, N. C.	363
Beet sugar, Austria-Hungary.	393	Black walnut-trees.	362
identification of.	401	Blalock Colony.	345
United States.	361	Bleekeria mitsukurii.	351
Beetles.	324	Blennoid fishes.	324
Beets, sugar, food for cattle.	366	Blockading squadrons, Gulf.	399
sugar, influence of environment on.	422	south Atlantic.	399
Behm Canal, chart.	319	Blood vessels, horses.	421
Belgium, agric. products exported.	336	Blue Mountain Lake, N. Y., topog. sheet.	342
automobiles.	393	Boards of survey.	321
telephone to London.	366	Bogota, American shoes.	394
tobacco.	366	Bohemia, coal.	393
Bellevue, Ohio, topographic sheet.	396	glassworkers' strike.	339, 365
Beni Department.	372	industrial census.	318
Bern, N. Y., topographic sheet.	396	lace.	394
Beryoid fishes.	351	Boiler water controller.	365
Bexar archives of Texas.	378	Bolivia.	317, 372, 432
Bible Normal College.	309	Acre question.	372
Bibliography, of antimasonic party.	378	mining.	344
of Argentina.	344	Bollings Creek, fishes.	324, 351
of bacillus enteritidis.	388, 421	Bonded warehouses.	373
of bass and sun-fish.	380	Bonds of United States.	373, 433
of bitter rot of apples.	309	<i>see also</i> Government Actuary.	
of botany of Philippines.	440	Bonyne v. Shafroth.	359
of bovine tuberculosis.	388	Bookkeeping and Warrants Division.	374
of Central America.	432	Books, copyrighted.	326, 352, 380, 409, 443
of Chile.	344	In House folding room.	420
of codling moth.	422	Boots and shoes.	393
of colonies and colonization.	375	American, in Bogota.	394
of Cuba.	432	American, in Germany.	394
of diseases and accidents of horses.	404	Colombia.	432
of ferrous sulphate as antiseptic.	347	Borax.	341
of food and nutrition of man.	389	Borers, peach-tree.	389
of fresh-water ostracoda.	324, 351	squash-vine.	422
of geology of Silverton quadrangle.	396	Borja Point Anchorage, chart.	343
of geology of Vermilion district.	341	Borneo, chart.	316
of hookworm disease.	348	Boston, Mass., chart.	392
of irrigation.	361, 389, 422	dietary studies.	309
of isopods.	380	exportation of animals.	368
of law of nations, history, etc.	432	fishery products.	312, 338, 367, 392, 425
of meteorology.	337, 363, 590	topographic sheet.	342, 427
of military subjects.	348, 435	Boston Bay, topographic sheet.	342, 427
of parasitic copepods of N. Amer.	325	Boston School of Housekeeping.	309
of Philippine Islands.	442, 443	Bosworth, Amy C.	420
of plankton algae.	352	Botany, Philippines.	440
of platinum, etc.	369	Bottles, refilling with spirits.	375
of rattulidae.	325	Boundaries, Costa Rica and Colombia.	400
of reindeer.	407	Bounties, Canadian.	393
of South America.	432	Bovine tuberculosis.	388
of stratigraphy of Kansas.	396	Brachiopoda, Cambrian.	324
of takosis.	361, 388	Brakes, railroads.	352, 393
of taste in fishes.	326	Bran, wheat.	388
of thysanoptera.	351	Brazil.	317, 344, 372, 400, 432
of trypanosoma Lewis.	320	Acre question.	317, 344, 372
of tubercle bacillus in cheese.	308, 388	coffee.	318
of veneridae.	351	exporters and emigrants to.	318
of volcanic eruptions in Antilles.	408	German colonies.	426
of walrus.	351	Indians.	379
<i>see also</i> Catalogue.		rubber.	394
Bicycles, Germany.	393	trade in.	339
Big Sandy River.	437	Bread.	422
Big Thompson Creek.	362	Breadstuffs, exports.	321, 340, 368, 393, 425
Bigflats area, N. Y.	363	Breeding, of sheep.	388
Bigmoose, N. Y., topographic sheet.	314	Brewing.	393, 425
Bills of lading.	393	Brick, calcareous.	426
Biographical Congressional directory.	387	Bricklaying.	426
Biological Laboratory, Woods Hole.	326, 406	Bridges, navigable waters, laws for.	349
Biological Survey Division.	361, 388	<i>see also</i> names of rivers bridged.	
circular 39.	373	Brinley, H. H.	324, 351
Biology.	379	British, <i>see</i> Great Britain.	

	Page		Page
British Admiralty, steamship contracts	339	Capers	318
British Columbia, coal	318	Capitol, rules for Senate wing	307
gold and manganese	426	Capitol Building and Grounds Super-	
mining	365	intendent, report, 1903	368
British Guiana, tariff	318	Caproid fishes	324
British Honduras, railroads	318	Carabaos, rinderpest	377
British India, U. S. trade in	339	Carboniferous rocks, Kansas	396
British West Africa, <i>see</i> Africa		Cards, catalogue, printed	352
Broom corn	309	Carriages, Paraguay	432
Browning, Mont., topographic sheet	342	Carroll, Charles, of Carrollton, statue	387
Brownsville, Pa., geologic atlas	395	Cars, engine	426
Bryostemma polyactocephalum	325	fo coal mines	442
Bryozoa	351	Carúpano, Venezuela	432
Bubonic plague	434	Casas Grandes meteorite	324
Buffalo, N. Y., exposition, <i>see</i> Pan-		Cass Lake Reservation	370
American Exposition		Castine, U. S. S.	398
Buffalo, U. S. S.	430	Casualties, <i>see</i> Accidents	
Buffalo Mountain	363	Catalogue, of A. L. A. library	427
Building-trades exhibition	393	of charts, coast pilots, etc.	424
Buildings, public, <i>see</i> Public buildings		of condemned ordnance	349
Bulacan Province	350	of copyrights	326, 352, 380, 409, 443
Bulletins, <i>see</i> Farmers' bulletins—bu-		of Geological Survey publications	341
reaus issuing bulletins		of lake survey charts	404
Buoys, lists of	320, 367, 425	of library of Abarenda, U. S. S.	371
Bureaus, transfer to Commerce and		of library of Alliance, U. S. S.	315
Labor Department	391	of library of Atlanta, U. S. S.	397
transferred from Treasury Dept.	319	of library of Castine, U. S. S.	398
Burnet, Tex., topographic sheet	315	of library of Iowa, U. S. S.	398
Business corporations	378	of library of Lancaster, U. S. R. S.	371
Butler, James J., contested election	420	of library of Lawton, U. S. S.	371
Butter, Argentina	365	of library of Marietta, U. S. S.	398
creamery	388	of library of Minneapolis, U. S. S.	316
Buttermilk Channel, N. Y. harbor	438	of library of Monongahela, U. S. S.	398
Cable railroads, carriers of mail	431	of library of Pensacola, U. S. T. S.	316
Cables	339, 343	of library of Petrel, U. S. S.	371
Cacao	349, 372	of library of Philadelphia, U. S. S.	429
Cache la Poudre Creek	362	of medical & veterinary zoology	308, 361
Cache River	437	of public docs	326, 352, 380, 408, 442
Cadiz, Ohio, topographic sheet	428	Catalogue cards, printed	352
Calamba-Batangas road	404	Catalogue Division	326, 352
Calcareous brick and stone	425	Cataloguing, Library of Congress rules	326
California, climate	423	Catfish	324, 351
forage plants	309	electric	351
hydrography	368	Cattle	426
labor laws	435	and markets	388
river and harbor improvement	435	diseases	388
California Agric. Exper. Station	362	enzootic	388, 421
California Débris Commission, rp. 1903	439	fattening	388
California, Dept. of, report, 1903	404	inspection and quarantine	360, 387
Callionymide	325	rinderpest	377
Calumet Harbor	436	sanitary officers in charge of	388
Calumet River	436	scabies of	388
Calves	388	sold and slaughtered, 1899	388
Camarones Bay, chart	343	splenetic fever	387
Cambrian brachiopoda	324	sugar beets for food	366
Campaigns, destruction of obstacles	404	transportation	387
Camulos, Cal., topographic sheet	341	tuberculin test	361, 388
Canada, bounties	393	Venezuela	432
copyright	443	Cavalry and Field Artillery School	348, 404
customs amendment act	393	Cavendish tobacco	374
imports and exports	393	Cavite, P. I.	430
minerals	426	Cement, in Alabama	427
signal corps telegraph system	441	machinery for making	393
steamship line to La Rochelle	318	Portland	365, 427
tariff on German goods	318	Cemeteries	342
tide tables	311	Census, 12th, <i>see</i> Census Office	
trade with Germany	318	Ecuador	345
Canal-boats	318	Census Bur. (formerly Census Office)	391
Canals, for irrigation	361	statistical work transferred to	365
Forth-Clyde	365	Census Office	313, 368, 427
interoceanic	378, 406	report, 1903	
Italy	365	<i>see also</i> Census Bureau	
<i>see also</i> names of canals		Central America, bibliography	432
Canary Islands, trade in	339	rubber tree	389
Cancer, cure for	393	Cepolidæ	351
Candles, Honduras	345	Cerebral fissures, of walrus	351
Cane River, fishes	324, 351	Cerebro-spinal meningitis	430
Canton, Ohio, topographic sheet	314	Certificates, of indebtedness	322
Cape, <i>see</i> name of cape		return	364
		Chaetodontide	325

Page	Page
Chambers of commerce..... 318, 393	Clouds..... 337, 363
Champlain, Lake..... 436	Coal..... 365
beacons, etc..... 320	American, in France..... 318
Chapel Cove, chart..... 429	Bohemia..... 393
Chapel Roads, chart..... 429	British Columbia..... 318
Charts, <i>see</i> Maps and charts.	France..... 393
Chase, Salmon P..... 378	Honduras..... 400
Chesse, cold curing..... 361	Marseille importations..... 339
filled..... 308, 388	Coal mines, railroad cars for..... 442
tubercle bacillus in..... 308, 388	Coaling stations, U. S., in Cuba..... 317, 400
Chemical industry, Germany..... 339	Coast and Geodetic Survey..... 311,
Chemistry Bureau..... 308, 336, 388, 422	319, 338, 346, 367, 374, 391, 402, 424
bulletin 79..... 422	signals of vessels..... 339
Chemists, Official Agric., Assoc. of..... 308	Coast pilots..... 319, 391, 424
Chemnitz, Germany..... 318	Coastal plain, <i>see</i> Gulf coastal plain.
Cherokee Indians..... 419	Cobalt..... 396
Cherry-trees, black..... 362	Cobitidae..... 351
Chess (plant)..... 309	<i>Cockrell, Francis M.</i> 419, 434
Cheyenne and Arapaho Reservation..... 335	Cocoa trees..... 432
Chiachi Islands, chart..... 392	Cocoanuts..... 405
Chicago, Ill., dietary studies..... 309	Cocoons..... 393
harbor improvement..... 436	Code list of merchant vessels..... 339
Chicago River..... 436	Codling moths..... 422
Chickamauga and Chattanooga Na- tional Park Comm., rp., 1903..... 435	Coffee..... 344, 365, 372
Chickens, <i>see</i> Poultry.	Brazil..... 318, 372, 400, 432
Chile..... 344, 372, 400, 432	Colombia..... 432
bibliography..... 344	Costa Rica..... 432
minerals..... 317	French imports from Venezuela..... 401
public health..... 345	Haiti..... 372, 393
China, emigration of natives to U. S..... 364	imports..... 373
natives at La. Purchase Expos..... 364	Coinage, Venezuela..... 317
China Relief Expedition..... 321	Coins, foreign..... 320, 402
Chinese, <i>see</i> China.	Coke..... 368
Chinese Eastern Railway..... 426	Cold..... 406
Chinese exclusion..... 338, 367	Cold frames, fumigating..... 389
Chippewa agricultural lands..... 397	Cold storage..... 362
Chippewa of the Mississippi Reserva- tion, <i>see</i> Chippewa Reservation.	Collation..... 326
Chippewa pine lands..... 315, 370	Collectors of customs..... 346
Chippewa Reservation..... 315, 370	Colleges, agricultural..... 361
Chirkof Island, chart..... 392	Collisions, of trains..... 352, 442
Chlorophyceæ..... 352	Colombia..... 432
Cholera..... 430	Amer. boots and shoes..... 393
hogs..... 388	boundary..... 400
Chronic iron ore..... 341	emerald mines..... 339
Chromite..... 341	isthmian transit traffic..... 344
Church History, American Society of..... 378	steamship service..... 400
Cienfuegos, Cuba..... 317, 318	tariff..... 318, 339, 372, 393
Cigarettes, tax..... 320	treaty with U. S..... 431
Cigars..... 402	Colonial school, Germany..... 339
manufacturers' losses..... 402	Colonias Territory..... 372
tax..... 320	Colonies, administration..... 375
Circuit courts, <i>see</i> Courts of U. S.	American..... 378
Circulars, <i>see</i> Dept., etc., issuing them.	France..... 393
Cities, statistics..... 365	Germany..... 393
Civil engineers, Navy..... 428	Great Britain..... 393, 426
Civil service, Quartermaster's Dept..... 350	of Germans in Brazil..... 400, 426
<i>see also</i> Civil Service Board, P. I.— Civil Service Commission.	Colonization..... 375
Civil Service Board, P. I..... 350, 405	Colorado, moth larvæ..... 325
report, 1902..... 377	orthoptera..... 324, 351
Civil Service Commission..... 325, 379	post route map..... 399
Civil War, neutrality of Great Britain..... 431	Columbia, Tenn., geologic atlas..... 395
official naval records..... 399	Columbia Institution for Deaf and Dumb, report, 1903..... 395
politics in Indiana..... 378	Columbia River..... 438, 439
Civilization, effect of good roads upon..... 363	Columbus, Ohio..... 389
Clark, William..... 420	Columbus Memorial Library..... 317,
Classification, Military Information Division library..... 321	344, 372, 400, 432
Classification bulletin..... 315, 397	Comets' tails..... 406
Classification Division..... 315, 397	Commerce, colonies of world..... 375
Classified service, <i>see</i> Civil service.	foreign..... 317, 345, 373, 401
Clay County, Ill..... 363	internal..... 348, 368, 395
Climate, California..... 423	requirements in France..... 365
Costa Rica..... 310, 337, 363, 390, 423	<i>see also</i> Exports—Imports—Trade— names of countries and places.
Hawaii..... 310	Commerce and Finance, Monthly Summary..... 321, 348, 368, 395, 426
Cling-fishes..... 325	Commerce and Labor Department..... 310,
Clinics, surgical..... 375	337, 364, 390, 423
Clinton County, Ill..... 389	Immigration Bureau recommenda- tions..... 392, 402

	Page		Page
Commerce and Labor Department, Treas. Dept. bureaus transferred to	319	Corporations Bureau, seal for comr.	391
Commercial agents, <i>see</i> Commercial travelers.		Corps of Engineers, <i>see</i> Engineer Department, Army.	
Commercial conventions, Cuba and United States	420, 421, 431	Correspondence, Post-Office Dept.	431
Commercial education	339, 393	War with Spain, etc	321
Commercial Pacific Cable	317	Cosmè colony	373
Commercial travelers	426	Costa Rica	344, 372, 400, 432
Commercial treaties	318	amphipoda	323, 351
Commissary-general, <i>see</i> Subsistence Dept.		climate	310, 337, 363, 390, 423
Compagnie Générale Transatlantique.	365	launch service	318
Competition, Amer., in south Africa.	365	public health	345
in South American markets	339	Cotton	365, 393
Comptroller of Treasury	347, 433	Brazil	432
report, 1903	402	British west Africa	426
Concepcion, Chile	344	exports	321, 340, 368, 393, 425
Confederation, Articles of	359	Cotton goods, Austria	393
Congo forest, pygmies	407	Manchuria	365
Congress	307, 335, 359, 387, 419	south Africa	318
and the people	363	Cotton-seed meal, protein in	388
extraordinary session	387	Couplers, automatic	365
mileage for members	419	Court of Claims	323, 441
reports of public officers to	420	Courtableau Bayou	436
Congressional Directory	419	Courtesy, at custom houses	373
Congressional documents, bound volumes	307, 335, 360, 387, 421	of officials	403
index	442	Courts of United States	323, 441
Congressional Library, <i>see</i> Library of Congress.		decisions, patents.	315, 342, 370, 397, 428
Congressional Record	419	West Virginia	442
Connecticut, labor statistics	425	Cowpea hay, protein in	388
river and harbor improvement	435	Cows, tuberculosis	388
Connell v. Howell	359	<i>see also</i> Calves.	
Connellsville, Pa., geologic atlas	395	Crabs	351
Conry v. Keliher	360	Cranberries	309
Consolidated index	442	insects injurious to	361
Consols, <i>see</i> Bonds.		Cranes, electric	318
Constitution of United States	359, 420	Craniology	407
Consular officers, Greece and U. S.	344	Creamery butter	388
Latin America	401	Creek Indians	315
Consular Reports	318, 339, 365, 393, 425	Criminals, extradition	317, 432
daily (formerly Advance sheets)	312, 339, 366, 394, 425	Crops, Germany	426
special	393	Philippines	323, 440
Consular service	372, 425	Prussia	339
Great Britain	426	related to chemistry of soils	363
invoices	373	Cross v. McGuire	360
Consuls, Latin-America	317	Crustaceans	325, 351
Contagious diseases	430	Cryolite	341
animals	388	Cuba	317, 344, 372, 394, 395, 400, 426
Contested elections	359, 360	agricultural lands	318
Continental Congress	387	Amer. vs. European manufactures	318
Contractors, American, in Italy	426	benefits of U. S. copyright for	421
Contracts, British steamships	339	bibliography	432
Contributions from Nat. Herbarium	324	crustaceans	351
Contrib. to biology of Great Lakes	325, 352	fishes	325
Controller, of boiler water	365	importations from, by U. S.	401
Convent Cove, chart	319	message of President Palma	432
Conventions, <i>see</i> Treaties.		naval, etc., stations for U. S.	317, 400
Converse, Cora M	420	patents and trade-marks	339
Coombs, Irving W	420	postal convention with U. S.	372
Cooper, Sam B	421	reciprocity with U. S.	419, 420, 421, 431
Coopers Lake, topographic sheet	314	sugar	340
Copenhagen, Denmark	340	tariff on coffee	365
Copepods	325	terrestrial isopods	325
Copper	368, 372	treaties with United States	317, 431
Peru	432	War with Spain correspondence	321
Copra	426	Culebra, chart	312
Copyright Office	326, 352, 380, 409, 443	<i>Cullom, Shelby M.</i>	420
Copyrights, benefits extended to Cuba.	421	Culture, oriental	407
<i>see also</i> Copyright Office.		Cumberland River	435
Coral	406	Cumberland Sound	436
Corn, American, at Havre	318	<i>Cummings, Amos J.</i>	307
Argentina	372	Cunard Steamship Company	339
broom	309	Custom-houses, Dalny, China	393
Corn meal	365	Venezuela	317
Cornwall, Conn., topographic sheet	314	Customs districts, list of	401
Corona	406	Customs Division	319, 346, 373, 374, 401, 433
Corporations, business	378	Customs duties, <i>see</i> Tariff—names of articles imported.	

Customs regulations, Costa Rica	400
Customs Service	346, 373, 401
fines and fees	433
Customs service, Canada	393
Cuvier's Règne animal	324, 351
Cuyo Island, chart	371

	Page		Page
Cyprididae.....	324, 351	District of Columbia, beetles.....	324
Cyprinoid fishes.....	324, 351	debt.....	403
Daily consular reports (formerly Advance sheets).....	312, 339, 366, 394, 425	earthquake.....	337
Dairy Division.....	308, 361	Electrical Department.....	441
Dairy industry, Argentina.....	344	Engineer Department.....	441
Dalish, S. S., & Sons.....	352	Fire Department.....	441
Dalry, China.....	365, 393	medical supervisors.....	441
Dalrymple Harbor, chart.....	347	park improvement.....	307
Dalzell, John.....	420	Potomac River bridges.....	435
Dams, see names of rivers and places.....		Soldiers' Home.....	377
Dantzier v. Lever.....	360	Street-Cleaning Department.....	406
Darlington area, S. C.....	363	taxes.....	441
Darter.....	351	Treasury Department employees.....	373
Davis v. Sims.....	360	water-supply.....	435
Davis Island dam.....	438	District of Columbia Com., Senate.....	307
Daws, Calvin.....	420	Disturbances, Federal aid in quelling.....	434
Day marks, lists of.....	320, 367, 425	Documentary stamps.....	402
Dead-Letter Office.....	431	Documents, bound vols 307, 335, 360, 387, 421 for Senate.....	420
Deaf, Columbia Inst. for, report, 1903.....	395	index.....	442
Deaths, causes of.....	391	monthly catalogue. 326, 352, 380, 408, 442	442
Debt, D. C.....	403	shipments to depositories.....	327, 353, 381, 411, 445
Decisions, Comptroller of Treasury.....	347, 433	Documents Office.....	326, 352, 380, 408, 442
labor.....	338, 425	report, 1903.....	442
land.....	368, 395	Dollars, silver.....	372
patents.....	315, 342, 370, 397, 428	Dolls.....	426
pension.....	313, 340, 368, 395, 426	Domestic animals, Cuba.....	372
Treasury.....	319, 346, 374, 401, 433	diseases.....	388
Declaration of Independence.....	317, 359, 378	Domestic disturbances, Federal aid in.....	434
Declination, magnetic.....	392	Dominican Republic, see Santo Domingo.....	
Decrees, see Laws.....		Dragon-fly.....	351
De Graffenried, Reese C.....	359	Dragonets.....	325
Delaware, rivers and harbors.....	437	Drainage, Ohio, etc.....	369
Delaware Bay.....	435	Drawbacks, Hungary.....	339
Delaware Indians.....	419	United States.....	401
Delaware River.....	435	Dredges, Mississippi River.....	437
Demography Committee.....	391	Dredging.....	380
Denmark, trade.....	339	Dried fruit.....	339
Department stores, Germany.....	393	Drill regulations, Hospital Corps.....	348
Depositories, shipments to.....	327, 353, 381, 411, 445	Drugs, from new source.....	310
Deposits, special.....	346	imported.....	401
Derailments, of trains.....	352, 442	Dry-goods, Germany.....	339
Designs, see Official Gazette, Patent Off.....		Dubnue, Iowa.....	389
Des Plaines River.....	436	Duluth, Minn., chart.....	405
Detroit River.....	322, 349, 376, 405, 439	Dutch Guiana, timber.....	340
Devonic formations, Maryland.....	351	Duties, see Tariff—names of articles imported.....	
Diatryma.....	351	Eagle Harbor, chart.....	392
Dictionaries, Army.....	321, 348	Earth, effect on meteorology.....	337
French-English military.....	435	magnetism of.....	392
Dietary studies.....	309	Earthquakes, Philippines.....	323, 440
Digest, of rules of House.....	420	Washington, D. C.....	337
Digestion, effect of food preservatives.....	310	East, Department of the, report, 1903.....	376
Digestive organs, horses.....	421	East River.....	437
Dinawan Anchorage, chart.....	316	Eayrs, Winslow P.....	420
Diphtheria.....	403, 430	Ecuador.....	345
Diplomacy.....	432	gold mining.....	317, 372
Diplomatic list.....	317, 344, 372, 400, 431	Education, commercial.....	339, 393
Diplomatic service.....	372, 425	industrial.....	426
Dipping hogs for lice.....	388	on good roads.....	363
Diptera.....	325	technical.....	426
Directors, farmers' institutes.....	362	Education Bureau.....	427
Directory, Army.....	321, 348, 376, 403, 434	annual statement, 1903.....	395
biographical Congressional.....	387	Eels.....	324, 351
Congressional.....	419	Efficiency records, Quartermaster's Department.....	350
House.....	335	Eggs.....	308, 388
of bird and game protectionists.....	361	preservation.....	365
Disbursements, see Expenditures.....		Egypt, irrigation.....	362
Discharge, Army.....	434	railroads.....	365
Diseases, contagious.....	430	trade.....	339
fungous, of grasshoppers.....	350	Elasmobranchiate fishes.....	351
insects as carriers of.....	375	Elaejon, Cal., topographic sheet.....	314
of animals.....	388	Elections, contested.....	359, 360
of cattle.....	388	Electric catfish.....	351
of goats.....	361, 388	Electric cranes.....	318
of horses.....	404, 421	Electric launches.....	424
of tobacco.....	362	Electric lighting, Mexico.....	372
venereal.....	321	railroads.....	426
Disinfection.....	434	Electric power, India.....	365
Distilled spirits, see Spirits.....			
District of Columbia.....	406, 441		
bacillus icteroides.....	375		

	Page		Page
Electric railroads	313	Exchange, International, Commission	
carriers of mails	431	on, Mexican	432
Germany	426	Exchange, International, Commission	
Leipzig	394	on, U. S.	400, 432
Paraguay	432	Exclusion, of Chinese from U. S.	338, 367
Prussia	393	Executive Office building	335
Quebec	318	Executive officers	387
Electric traction	426	Executive orders	320
Electrical Department, D. C.	441	Executive proclamations, <i>see</i> Procla-	
Electricians, Germany	426	mations of President.	
Electricity, atmospheric	310	Exhibitions, <i>see</i> Expositions.	
waste in public buildings	346	Expenditures	374
Electrons	310	Experiment Sta. Record	309, 362, 389, 422
Elevators, passenger, Malta	339	Experiment stations, agricultural, <i>see</i>	
Elk River	438	Agric. experiment stations.	
Elkland, Pa., geologic atlas	341	Experiment Sta. Office	309, 361, 389, 422
Emerald mines	339	Explosives, taxes in Mexico	317
Emigrants, to Brazil	318	Export tax, <i>see</i> Tariff—names of arti-	
Emoluments, discontinuing accounts.	402	cles exported.	
Employees	427	Exporters, to Brazil	318
agreements with employers ...	338, 425	Exports	321, 340, 368, 393, 425
<i>see also</i> names of Depts. and bureaus.		agricultural	309
Employers, agreements with em-		animals and animal products	388
ployees	338, 425	declared for United States	318
Engine cars	426	growth in valuations	345
Engineer Corps, <i>see</i> Engineer Depart-		of distilled spirits	320
ment, Army.		<i>see also</i> countries and places.	
Engineer Dept., Army. 322, 349, 376, 404, 435		Exposition Board, P. I.	323, 377
report, 1903.	438	Expositions, <i>see</i> names of exposi-	
vessels	393	tions—places where held.	
Engineer Department, D. C., rp., 1903. 441		Extradition, Brazil	317
Engineer depots	435	Guatemala and U. S.	432
Engineer School of Application 404, 435, 439		Eyes, horses	421
Engineer Troops	404, 439	Fairport Harbor, Ohio, chart	349
Engineering	361	Falmouth Harbor, chart	392
Engineering standards committee	365	Farm animals, <i>see</i> Cattle—Horses—	
Engineers	435	Sheep.	
civil, Navy	428	Farm colonies, Salvation Army	338
training	393	Farmers, handling forest lands	336
vessels	312	right to recognition	363
Engines, oil	394	Farmers' bulletins, Agriculture Bu-	
England, <i>see</i> Great Britain.		reau, P. I.	322, 349, 350, 377, 405
Engraving & Printing Bur., rp., 1903. 402		Agriculture Dept.	308, 309, 361, 388, 423
Enlisted men, Army	434	Farmers' institutes	362
Ensenada de Mora, <i>see</i> Mora.		Fat, feeding into milk	308, 388
Enteritidis bacillus	388, 421	fish	408
Entomology, <i>see</i> Entomology Divi-		Fattening beef cattle	388
sion—Insects.		Fauna, crustacean	325
Entomology Division	308, 361, 389, 422	Federal aid in domestic disturbances.	434
Envelopes, for balloons	363	Federal Convention of 1787	378
Enzootic	388, 421	Fees, customs and navigation	433
Epidemics	430	Feet, <i>see</i> Foot.	
Equator crossings, <i>see</i> Pilot charts.		Felicity, schooner	441
Equipment Bur. 315, 316, 343, 371, 397, 429		Ferrosilicon	365
Erie, Pa., harbor improvement	437	Ferrous sulphate	347
Erie, Lake	322, 349, 376, 405, 439	Fertilizers, from aquatic products	408
harbor improvement	435	Fetlock	421
plankton algae	352	Fevers, splenic	387
Erzerum, Turkey	393	spotted or tick	403
Essence, of orange leaves	365	Field operations, Soils Bureau, appli-	
Etiology of yellow fever	320	cations for	423
Eucalyptus	351	File-fishes	325
Eulogies, <i>see</i> Memorial addresses.		Fillipinos, <i>see</i> Philippine Islands.	
Europe, American fruit	393	Filled cheese, <i>see</i> Cheese, filled.	
bills of lading	393	Filtration, of water	375
commercial education	339	Finance, Commerce and, Monthly	
commercial travelers	426	Summary, <i>see</i> Commerce and	
commercial treaties	318	Finance, Monthly Summary.	
food adulteration	393	Finances, Germany	393
imports from Paraguay	432	Financial officers, agric. colleges, etc. 401	
industrial education	426	Findings of Court of Claims	441
manufactures in Cuba	318	Findlay, Ohio, topographic sheet	369
methods to induce emigration	402	Fines, customs and navigation	433
prison systems	373	discontinuing accounts	402
steamship lines to Mexico	366	Finland, commerce with U. S.	426
European larch	336	Fire, concentration in battle	404
Ewes, milk	388	Fire Department, D. C., report, 1903. 441	
Examinations, civil engineers, Navy.	428	Fish Commission	325, 351, 380, 408
civil service	325	signals of vessels	339
Naval Academy	399	<i>see also</i> Fisheries Bureau.	
Exchange, rate in Mexico	317		

	Page
Fisheries.....	324
middle Atlantic States.....	408
Porto Rico.....	380
<i>see also</i> Fish Comm.—Fisheries Bur.	
Fisheries Bureau (formerly Fish Com- mission).....	312, 338, 367, 392, 425
Fisheries, Division of Statistics and Methods of the.....	408
Fishes.....	324, 325, 351
caproid.....	324
Formosa.....	325
Hawaii.....	380
Japan.....	324, 325, 351
products.....	408
taste.....	326
<i>see also</i> Fish Comm.—Fisheries Bur.	
Fishing, Algeria.....	339
Fish-raising, Com. and Labor Dept.....	391
Flies, as carriers of disease.....	375
Flint implements.....	379
Florida, mail contracts.....	372, 399
river and harbor improvement.....	435, 436
sponges.....	380
Flour, Australia.....	393
Malta.....	340
Floyd, Anne T.....	441
Fluorspar.....	341
Fog signals, Atlantic and Gulf coasts.....	375
Folding room, House.....	420
Foliage, autumnal coloration.....	337
Folk-lore, weather.....	423
Food, adulteration of.....	393
American, in France.....	393
definitions and standards.....	308
exclusion of adulterations.....	345
functions and uses.....	389
imported.....	401
preservatives in.....	310
publications on.....	389
Food for cattle, effect on milk.....	308, 388
<i>see also</i> Hogs—Horses—Lambs— Steers.....	
Food standards committee.....	308
Foot, horses.....	348, 421
Foot-and-mouth disease.....	336, 388
Forge plants, northwestern States.....	309
Foreign coins, <i>see</i> Coins, foreign.	
Foreign Commerce Bureau.....	318
<i>see also</i> Statistics Bureau, Commerce and Labor Department.	
Foreign Mail Service, report, 1903.....	431
Foreign Markets Division.....	309, 336, 423
Foreign Relations Committee.....	419, 431
Forest lands.....	336, 362
Forest reserves, stock raising in.....	427
<i>see also</i> names of reserves.	
Forestry.....	309
Forestry Bureau, Agric. Dept.....	309, 336, 362
Forests, products, U. S. exports.....	336
<i>see also</i> Forestry Bureau.	
Forked Deer River.....	435
Formosa, fishes.....	325
Formulas, geographic.....	313
Forth-Clyde ship canal.....	365
Forts, <i>see</i> names of forts.	
Fossils, Afton, Ind. T.....	379
birds.....	351
human.....	407
Kansas.....	396
Foster, William T.....	324
Fostoria, Ohio, topographic sheet.....	314
Foundlings, Washington Hospital for, report, 1903.....	342
France, American coal.....	318
American corn meal and hominy.....	365
American food stuffs.....	393
American investments and trade.....	393
American machinery.....	318
American trade requirements.....	365
automobiles.....	393

	Page
France, building-trades exhibition.....	393
capers.....	318
cattle.....	426
chambers of commerce.....	393
coal.....	393
cotton.....	365
cotton production in colonies.....	393
dried fruit.....	339
ferrosilicon.....	365
German coal.....	365
income tax.....	365
meat.....	426
military dictionary.....	435
olives and olive oil.....	318
parliaments.....	378
sardines.....	426
sugar.....	426
surtax on imports.....	339
tariff.....	339
treaty with Venezuela.....	401
wine and fruit.....	318
withdrawal from Mexico.....	378
Frankford Arsenal.....	349
Franklin, Tenn.....	441
Franklin, U. S. R. S.....	430
Fraxinus Americana.....	336
Freedmen's Hospital, report, 1903.....	368
Freemasonry.....	378
Freight-cars, for coal mines.....	442
Freight rates.....	318, 408
on milk.....	310
Freight tonnage, Sault Ste. Marie.....	366
Fremont, Ohio, topographic sheet.....	396
French, <i>see</i> France.	
French spoliation claims, <i>see</i> Court of claims.....	
Fresno, Cal., alkali lands.....	363
Fruit.....	393
dried.....	339
France.....	318
Hungary.....	365
nutritive value.....	362
preserving in Germany.....	394
tropical.....	346
Fruit-trees, tropical.....	336
Fruitarians.....	362
Fuchau, China.....	339
Fugitives, <i>see</i> Criminals.	
Fumigating.....	389
Fungicides.....	308
Fungous diseases, grasshoppers.....	350
Fur industry, Siberia.....	318
Furniture, Germany.....	339
Furs, Argentina.....	372
Future.....	406
Gadsden, Ala., topographic sheet.....	369
Gaines, Pa., geologic atlas.....	313
Gainesville, Ga., tornado.....	337
Galatheidæ.....	351
Galena River.....	437
Gallith.....	365
<i>Gallinger, Jacob H.</i>	359, 419, 420
Galvanic batteries.....	393
Game, Alaska.....	361, 373
laws.....	388
protection of.....	361
Gardening, for schools.....	389
Garfield, James A.....	359
Gas, waste in public buildings.....	346
Gasconade River.....	437
Gates expedition of 1901.....	379
Gauging, of bonded spirits.....	402
Gayley River.....	438
Gaya, Borneo, chart.....	316
Gelechiidæ.....	325
General Appraisers, <i>see</i> Appraisers.	
General Land Office, <i>see</i> Land Office.	
General Service and Staff College.....	404
report, 1903.....	376
Generative organs, horses.....	421

	Page		Page
Geodesy, operations in United States ..	311	Germany, wine	366
Geodetic Association, International ..	311	wood drying	366
Geography	406	Germicides, ferrous sulphate	347
tables and formulas	313	glycerin	434
Geologic atlas of U. S. 313, 341, 395,	427	Gettysburg National Park, Battery E	
Geological Survey 313, 340, 368, 395,	427	monument	439
Geology	379	Gettysburg National Park Commission ..	439
of Bulacan Province	350	Gibraltar, coal trade	365
<i>see also</i> Geological Survey		Gil, Alejandro Wos y	400
Georgetown, D. C.	366	Glass, Germany	365
Georgia, labor laws	338	window-	394
mail contracts	372, 399	Glassworkers, strike in Bohemia ..	339, 365
river and harbor improvement	436	Gloucester, Mass., fishery products	
German southwest Africa, <i>see</i> Africa ..		landed at	312, 338, 367, 392, 425
Germany, agricultural imports	423	Gloversville, N. Y., topographic sheet ..	369
American and Russian petroleum ..	339	Gloves, Chemnitz exports	318
American fruit	339, 393	Glycerin	434
American manufactures	426	for vaccine virus	434
American shoes	394	Goats	361, 388, 421
American tobacco trust	394	Goatskins	401
bicycles	393	Gobiesocidae	325
brakes for railroads	393	Gold	426
brick and stone manufacture	426	British Columbia	426
cable laying	339	Nicaragua	432
Canadian tariff on goods	318	Peru	373
chambers of commerce	318	production	432
chemical industry	339	Gold mining, Ecuador	317, 372
coal	365, 393	Uruguay	317
colonial school	339	Gold-standard law, Peru	345
colonies in Brazil	400, 426	Goleta, Cal., topographic sheet	427
commercial, etc., depression	426	Golofnin Bay, chart	312
cotton	365	Good Roads Association, National ..	362
cotton culture in colonies	393	Good seeing	406
crops	426	Göttingen University	361
department stores	393	Government Actuary .. 319, 347, 374, 402,	433
dry-goods	339	Government bonds, <i>see</i> Govt. Actuary.	
electric cranes	318	Govt. documents, <i>see</i> Documents ..	
electric lights on railway trains ..	426	Government Hospital for Insane	370
electric railroads	426	Government Laboratories Bur., P. I. ..	323, 377
electric turntable	366	Govt. Printing Office .. 326, 352, 380, 408,	442
electricians	426	new building	436
exports	365, 400	Governors Island	438
finances	393	Gowanus Creek Channel	438
freight rates	318	Grain, Germany	426
fruit preserving	394	Grain shippers	426
furniture	339	Grand Forks, N. Dak.	389
galvanic batteries	393	Grand Harbor, Malta	339
glass industry	365	Grand River	436
grain	426	Grasshoppers	350
Hebrew school of agriculture	318	Grazing, forest reserves	427
ice manufacturing machine	318	Great Britain	393
industrial schools	365	American colonies as dependencies ..	426
iron	394	consular service	378
iron export prices	365	cotton	365
Laborers' Welfare Exposition	318	engine cars	426
machinery insurance	394	engineering standards committee ..	365
meat	365, 388, 394	foreign and colonial trade	394
merchant marine	394	house-cleaning device	339
microscope	339	iron and steel	394
musical instruments	365	lace and hosiery exports	318
ocean steamers	394	municipal socialism	318
ocean transportation companies ..	365	neutrality in Civil War	431
patent law	394	shipping in the Orient	394
patent medicines	394	state aid to shipping	419
Pollak-Virag rapid telegraph	340	steamships to Argentina	372
porcelain	394	tariff	426
Portland cement	365	trade	345, 394, 400, 432
public works in cities	394	tuberculin test of cattle	361, 388
rubber goods	394	Great Lakes	436
sample museums	365	naval training station	429
shipping in the Orient	394	storms	310
South American trade	426	<i>see also</i> Northern and Northwestern	
steel	394	Lakes Survey	
study of labor conditions	394	Greece, consuls	344
sugar	394	industrial notes	365
tariff	339, 426	Green Bay	322, 349, 376, 405, 439
toys	394	Greenhouses, fumigating	389
trade	318, 339, 344, 393, 394, 426,	Greenlings	325, 351
typhus prevention	366	Guam	406
window-glass	394	Guanica, P. R., chart	424

	Page		Page
Guano	372	Hops, Austria-Hungary	394
Guantanamo, Cuba	400	Horses, Army	404
Guatemala	317, 345, 372, 400	diseases of	421
extradition of criminals	432	feeding	388
maps	345	feet	348
Guayaquil and Quito Railroad	345	governmental insurance	365
Gudger, Jas. M., Jr., contested election	360	inspection and quarantine	360
Guiana, British, <i>see</i> British Guiana		saddle	336, 388
Gulf, <i>see</i> name of gulf		transportation	360
Gulf blockading squadron	399	trypanosomiasis	323
Gulf Coast, lights and fog signals	375	Horseshoeing	388, 422
Gulf coastal plain, petroleum	341	Hosiery	426
Gun-carriages, <i>see</i> Gun mounts		British exports	318
Gun Factory, naval	430	Chemnitz exports	318
Gun mounts	322	Hospital Corps, Army	376
Guns, condemned	349	drill regulations	348
Gutta-percha, artificial	394	Hospitals, <i>see</i> names of hospitals—	
Guyandot River	437	places where located	
Habana, <i>see</i> Havana		Hot Springs, Ark., Reservation, rp., 1903	368
Hague palace of peace	345	House-cleaning device	339, 394
Hailstorms	310	House of Representatives	335, 359, 420
Haiti	372, 400, 432	Howard University, report, 1903	370
coffee	393	Howell, Benj. F., contested election	359
Hampton County, S. C.	362	Huachuca Mountains, reptiles	325
Handbook, soldier's	321	Huanchaco, Peru	373
Hanson, John, statue	387	Hudson, Jonathan	441
Harbors, <i>see</i> Engineer Dept., Army		Hudson River	437
Hargeria	351	Humboldt Bay, chart	392
Harlem River	437	Hungary, attorneys and notaries in U. S.	393
Harness, Paraguay	432	drawbacks	339
Harvests, <i>see</i> Crops		fruit	365
Hatteras, Cape, waterspout	310	poultry	394
Haubstadt, Ind., topographic sheet	314	proposed public works	339
Havana, Cuba, yellow fever	345	<i>see also</i> Austria	
Havre, France	318	Huron, Lake	322, 349, 376, 405, 439
Hawaii	428, 429	Hurricanes	423
birds	380	West Indies	343, 390
climate	310	Hutchinson, Kans.	352
crabs	351	Huttonsville, W. Va.	441
fishes	325, 380	Hydraulic locks	318
governor's report, 1903	428	Hydrocyanic acid gas	389, 434
isopods	380	Hydrographic Office	316, 343, 371, 398, 429
labor laws	425	report, 1903	429
porpoise	380	Hydrography, California	368
sugar	405	Hydrography Division	315, 342, 370, 397, 428
Hay, cowpea	388	Hydroids	324, 351
Hay-Paunczefote treaty	378	Hygiene, maritime	345
Health, effect of preservatives in food	310	public, <i>see</i> Public health	
<i>see also</i> Public health		Hygienic Laboratory	320, 347, 403, 434
Health Reports, <i>see</i> Public Health Rps.		Ice, machine for manufacturing	318
Heart, horses	421	Ieteroides bacillus	375
Hebrews, <i>see</i> Jews		Idaho, geology	396
Hemibranchiate fishes	325, 351	Idaho, U. S. S.	429
Herbarium, Nat., contributions from	324	Igneous rocks	313
Heredity	406	Illinois, river and harbor improve-	
Hernandez, José M.	401	ment	436
Hesperornis	351	Illinois and Mississippi Canal	436, 437
Hexagrammidae	325, 351	Illinois Experiment Station	363
Highways, <i>see</i> Roads		Illinois River	436
Hirawata Wan, chart	371	Illuminating material	365
Historical Manuscripts Comm., 6th rp.	378	Immediate transportation	346, 373
Historical register, Army	321, 348	Immigrants, Transvaal	318
Historical Review, American	378	Immigration, decisions	319
History, articles concerning	432	methods to induce	402
subordination in treatment	378	Peru	345
Hogs, American pork in Turkey	394	São Paulo	372
cholera	388	United States	345, 348
dipping for lice	388	Immigration Bur.	338, 364, 366, 367, 392, 424
feeding	388	report, 1903	402
inspection and quarantine	360, 387	Immigration Service	424
Hokushu, chart	316	Implements, agricultural, <i>see</i> Agricul-	
Holbrook's salamanders	351	tural machinery	
Holmes, Hudson & Co.	441	flint	379
Hominy	365	Import tax, <i>see</i> Tariff—names of arti-	
Homochitto River	436	cles imported	
Homotrypa	351	Imports	340
Honduras	317, 345, 432	agricultural	309
coal	400	animals and animal products	388
Honshu, chart	371	<i>see also</i> countries and places	
Hookworm disease	348	Income tax, France	365

	Page		Page
Independence of U. S., anniversary	317	International Mercantile Marine Co.	339
Index, to classification of Military Information Division library	321	International Prison Commission	373
to documents, 57th Cong. 2d sess.	442	International Sanitary Convention of American Republics	345
to Experiment Station Record	362	Interoceanic canals	378, 406
to Geological Surv. publications	341	Interstate Commerce Comm.	352, 408, 442
to military subjects	348, 435	Intracranial tumors	370
to Official Gazette, Patent Off.	370, 397, 428	Inuboe Zaki, chart	371
to Official Gazette, P. I.	349	Inventions, <i>see</i> Patents.	
to orders and circulars of Adj.-Gen.	403	Inventory, House folding room	420
to Park improvement papers	307	Invertebrate fossils	396
to patent decisions	342	Investments, Amer., in France	393
to Public Health Reports	375	Great Britain	393
to sailing directions for Philippines	402	Invoices, consular	373
to Treasury decisions	319	Iowa, roads	363
Index-catalogue, of medical and veterinary zoology	308, 361	Iowa, U. S. S.	398
India, electric power	365	Iowa College of Agriculture and Mechanic Arts	422
exports to	365	Iquitos, Peru	317
jute	394	Iron	394
tea	426	Bulacan Province	350
India rubber, <i>see</i> Rubber.		German export prices	365
Indian Bureau	315	Mexico	345
report, 1903	428	process for hardening	394
Indian Commissioners, report, 1902	370	relation of use to prosperity	318
Indian reservations, <i>see</i> names of reservations.		Sudan	339
Indian service, officers	315	Vermillion district	341
Indian Terr., feeding station for cattle	360	Ironware	426
mine inspector's report, 1903	397	Irrigation	362
river improvement	437	alkaline and saline waters	310
Indiana, fresh-water isopods	325	bibliography	361, 389, 422
politics during Civil War	378	canals for	361
Indians, Brazil	379	for sugar beets	422
<i>see also</i> Indian—names of reservations and tribes.		Irrigation papers	315, 341, 368, 369, 396, 427
Industrial education	426	Islands, <i>see</i> names of islands.	
Industrial expositions	426	Isle of Pines, <i>see</i> Pines, Isle of.	
Industrial schools, Germany	365	Isogonic charts	392
Industrial technological museum	432	Isopods	325, 380
Industries, Cuba	394	Isthmus, <i>see</i> name of isthmus.	
Honduras	432	Italy, American contractors	426
Moseley's Industrial inquiry	426	rivers and canals	365
Peru	317, 345	Ivory, Antwerp	394
Infantry, supplying ammunition to	404	Jamaica, hurricane	390
Inland waters, pilot rules	340	Jamaica Bay, chart	392
Insane, intracranial tumors	370	James River	438
Insane, Government Hospital for, <i>see</i> Government Hospital for Insane.		Jamestown Island	438
Insecticides	308, 361, 434	Janesville, Wis.	389
Insects, enemies of sugar beet	361	Japan, bamboos	309
hydrocyanic acid gas for	434	commerce	394
Philippines	323, 440	crustaceans	351
<i>see also</i> Entomology Division.		financial system	318
Insolation	310	fishes	324, 325, 351
Inspection, of cattle	360, 387	squaloid sharks	325
of meat	365, 394	Yangtze trade	365
Inspector-General, Army, rp., 1903	405	Java	394
Inspector-General, Soldiers' Home, D. C., rp., 1903	377	Jefferson, Thomas, correspondence	373
Inspectors, of steamboats	366	Jefferson's manual	359, 420
Institutes, farmers'	362	Jews, agricultural school	318
Institutions, free entry of articles	319, 346	Joint resolutions, <i>see</i> Laws.	
Insular Affairs Bur.	322, 349, 376, 405, 440, 442	Jolo, P. I., chart	347
Insular possessions, <i>see</i> names of islands.		Jolo Archipelago, sailing directions	346
Insurance, fraudulent companies	419	Jolo Island, chart	347
horses	365	Jolo Sea, chart	371
machinery	394	sailing directions	346
Interior Department	313, 340, 368, 395, 426	Judge-Advocate-Gen., Army, rp., 1903	405
Internal commerce	348, 368, 395	Judge-Advocate-Gen., Navy, rp., 1903	430
Internal revenue, decisions	319, 346, 374, 401, 433	Juglans nigra	362
<i>see also</i> Internal Revenue Office.		Justice Department	315, 397, 428
Internal Revenue Office	320, 374, 402, 433	Jute	394
International Congress of Medicine	430	Kaaterskill, N. Y., topographic sheet	369
Internat. Exchange, Comn. on Mexican	432	Kahn v. Livernash	360
Internat. Exchange, Comn. on U. S.	400, 432	Kanawha River	438
International Geodetic Association	311	Kansas, geology	396
International law	432	post route map	399
		Kelther, John A., contested election	360
		Kenly, N. C., topographic sheet	314
		Kenova, W. Va., topographic sheet	314
		Kentucky, drainage	369
		mail contracts	372, 399
		river improvement	436

	Page		Page
Kentucky River	437	Laws, sugar, in Russia	366
Kerosene, <i>see</i> Petroleum.		tariff, British Guiana	318
Key West, Fla., harbor improvement.	435	use of word "bank" in Mexico....	317
Kingwood Coal Company	442	Lawton, U. S. S.	371
Kites, for meteorological observations.	310	Laysan Island	380
Kittredge, Perry	420	Leaf tobacco	374
Kiushu, chart	316	Leakage, bonded spirits	402
Kloss, C. B.	324	Leavenworth, Fort, General Service	
Kobama Hakuchi, chart	371	and Staff College	376, 404
Kulmbach, Germany	425	Lecturers, farmers' institutes	362
Labels, decisions	342	Leech Lake Reservation	315, 370
<i>see also</i> Official Gazette, Patent Off.		Leeward Islands, H. I.	351, 380
Labor, foreign conditions	394	Lefroy, H. Maxwell	324, 351
<i>see also</i> Labor Bureau.		Legacy tax	374
Labor Bureau	338, 425	Legaré, George S., contested election..	360
statistical work transferred from...	365	Legaspi, P. I., chart	347
Laborers' Welfare Exposition	318	Legislation, <i>see</i> Laws.	
Lace, Bohemia	394	Leipzig, Germany, street railways....	394
British exports	318	Lepidopa	324, 351
Maltese	318	Lepidoptera	325
Nottingham	394	Leucania	325
La Crosse, Wis., harbor improvement.	437	Lever, Asbury F., contested election ..	360
Ladrones Islands	442, 443	Libraries, catalogue of books for....	427
Lafourche Bayou	436	<i>see also</i> names of libraries.	
Laguan Bay, chart	374	Library of Abarenda, U. S. S.	371
Lake Shore & Mich. Southern Ry. Co.	352	Library of Agriculture Dept.	336, 422
Lake survey charts, <i>see</i> Northern and		Library of Alliance, U. S. S.	315
Northwestern Lakes Survey.		Library of Atlanta, U. S. S.	397
Lakes, <i>see</i> Great Lakes—names of lakes.		Library of Castine, U. S. S.	398
Lakes, Department of the, rp., 1903....	404	Library of Congress. 326, 352, 375, 380, 409, 442	
La Mar Bay, chart	429	books on Central America, etc.	432
Lambs, feeding	388	cataloguing rules	326
Lameness, horses	421	printed catalogue cards	352
Lampridiae	324, 351	Library of Iowa, U. S. S.	398
Lancaster, U. S. R. S.	371	Library of Lancaster, U. S. R. S.	371
Land Office, General	315, 342, 370, 397	Library of Lawton, U. S. S.	371
decisions	368, 395	Library of Marietta, U. S. S.	398
report, 1903	397	Library of Military Information Div.	321
Landing, of perishable cargoes	346	Library of Minneapolis, U. S. S.	316
Landram, Louis	441	Library of Monongahela, U. S. S.	398
Landram, William J.	441	Library of Navy Department	398
Lands, agricultural, Cuba	318	report, 1903	430
alkali	363	Library of Pensacola, U. S. T. S.	316
Cherokee Nation	419	Library of Petrel, U. S. S.	371
Creek Nation	315	Library of Philadelphia, U. S. S.	429
forest	336, 362	Lice, on hogs	388
Mississippi	420	Life-saving districts and stations	347
public, <i>see</i> Public lands.		Life-Saving Service	347
reclamation of	390	Light	406, 407
Lansing, Kans., fossil human remains.	407	Light-House Board	320, 367, 375, 392, 425
La Perouse Strait, chart	316	signals of vessels	339
Larch, European	336	Light-ships, specifications	392
Larix, Europea	336	Lighthouse districts, 3d	320
La Rochelle, France	318	4th	367
Larvæ of moths	325	5th	425
Lasurine bats	351	Lighthouse Rocks, chart	392
Lasellsville, N. Y., topographic sheet.	369	Lights, Atlantic and Gulf coasts	375
Latin America, <i>see</i> American Republics Bureau.		railway trains	426
Launch service, Costa Rica	318	<i>see also</i> Beacons—names of places.	
Law of nations, <i>see</i> International law.		Likiep Islands, chart	316
Laws	419	Lima, Peru	318
bankruptcy, Argentina	317, 344, 372	Linaloe, Mexican	365, 372
bridges over navigable waters	349	Lincoln, Abraham	359, 380
Chinese exclusion	338, 367	Linnarssonella	324
Colombian tariff	339	Liquor dealers, tax-paid spirits	402
copyright	409, 443	Liquors, <i>see</i> Spirits.	
customs service	319, 346	Lithium	341
exports	340	Little Kanawha River	438
game	388	Little Sodus Bay, chart	322
immigration	367	Littlefalls, N. Y., topographic sheet ..	314
insecticides	308	Live stock, <i>see</i> Cattle.	
labor	338, 425	Livernash, Edw. J., contested election.	360
mail transportation	431	Liverpool Steamship Owners' Assoc.	419
meat inspection	365, 394	Living, cost of	425
navigation and merchant marine	312	Loaches	351
patents, Germany	394	Loans and Currency Division	433
Philippine Commission, 2d	377, 440	Locks, hydraulic	318
road	363	<i>see also</i> names of rivers and places.	
stamp taxes in Mexico	340	Locomotives, American, superiority of	365
		Long Bridge, D. C.	435

	Page		Page
Long Island, rivers and harbors.....	437	Manuals, boards of survey.....	321
Long Island Sound.....	437	civil service.....	325
Loog, P. I., chart.....	371	House.....	420
Louisiana, chart.....	392	Jefferson's.....	359
petroleum.....	341	naval supply fund.....	317
post route map.....	400	Philippine civil service.....	405
river and harbor improvement.....	436, 437	Senate.....	359
Louisiana Purchase Exposition.....	363	Subsistence Department.....	350
Chinese.....	364	Manufactures, American, in Germany.....	426
Philippine exhibit.....	323, 377	American vs. European, in Cuba.....	318
Ludwigshafen, Germany.....	426	Massachusetts.....	338
Luk, P. I., <i>see</i> Loog.....		world's.....	345
Lumber and timber, Dutch Guiana.....	340	Maps and charts, Amer. Republics Bur.....	345
Lumbermen, handling forest lands.....	336	Coast and Geodetic Survey.....	312
Luzerne, N. Y., topographic sheet.....	314	319, 338, 347, 367, 374, 392, 424	
Luzon, Calamba-Batangas road.....	404	Geological Surv. 313, 341, 369, 395, 396, 427	
railroads.....	376	Hydrographic Office. 316, 343, 371, 398, 429	
Lymphatics, horses.....	421	in House folding room.....	420
Lynn, Mass., harbor improvement.....	436	Land Office, General.....	342
Macadam roads.....	318	Northern and Northwestern Lakes	
McGuire, Bird S., contested election.....	360	Survey.....	322, 349, 376, 405
Machinery, American, in France.....	318	Philippine Islands.....	442, 443
American, in Roubaix.....	394	post route.....	399, 400
cement.....	393	Signal Office.....	441
for manufacturing ice.....	318	statistical atlas.....	427
German tariff on.....	339	Maracaibo, Venezuela.....	317
insurance on.....	394	March winds.....	310
mint.....	365	Marcushook, Pa.....	437
South Africa.....	426	Mariana Islands, <i>see</i> Ladrone Islands.....	
textural.....	366	Marietta, U. S. S.....	398
tool.....	426	Marine Corps, officers, list of.....	343
Mackinac, Straits of, chart.....	349	report, 1903.....	430
McKinley, William.....	359	Marine Hospital Service, <i>see</i> Public	
McKinney, Fort, topographic sheet.....	315	Health and Marine Hospital Serv.	
McLaurin, Anselm J.....	420	Marine university.....	406
McMillan, James.....	359	Maritime statistics.....	400
Macrodon.....	324, 351	Markets, live stock in.....	388
Madrid, Spain.....	394, 430	Marseille, France, coal importations.....	339
Magindanao.....	440	Marsh lands, salt.....	390
Magnesite.....	313	Marshall, Charles.....	441
Magnetic declination tables.....	392	Marshall, Rebecca S.....	441
Magnetism, earth's.....	392	Martinique.....	408
Mailun Bay, chart.....	347	Maryland, Devonle and Ontario for	
Mail and Files Division.....	374	mations.....	351
Mail contracts, advertisements.....	372, 399	river and harbor improvement.....	437
Mail matter, transportation.....	431	Masontown, Pa., topographic sheet.....	396
Mail service, <i>see</i> Postal service.....		Massachusetts, chart.....	338
Maine, fresh-water fishes.....	352	labor statistics.....	425
labor statistics.....	425	manufactures.....	338
mink.....	324, 351	quarantine of cattle.....	387
river and harbor improvement.....	436	river and harbor improvement.....	436
Mal de caderas.....	388	Massillon, Ohio, topographic sheet.....	369
Malaga, American automobiles.....	365	Masters of vessels, list of.....	312
Malanut, P. I., chart.....	398	Mates.....	312
Malaria, carried by mosquitoes.....	434	Matter, life of.....	407
Malay Peninsula, wild tribes.....	407	radio-activity of.....	407
Malay States, tin.....	394	Meal, corn.....	365
Malta, breakwater.....	339	cotton-seed.....	388
delay in shipping goods to.....	365	Measures and weights.....	312
import regulations.....	318	metric.....	312
lace.....	318	Meat, Argentina.....	400
passenger elevator.....	339	France.....	426
wheat and flour.....	340	Germany.....	388, 394
Maltese, <i>see</i> Malta.....		Meat inspection.....	365, 394
Mammals, Sumatra.....	351	Medical Corps, Army.....	440
Mammoth Cave, crustaceans.....	325	Medical Department, Army.....	376, 440
Man.....	389, 407	report, 1903.....	405
craniology.....	407	Medical supervisors, D. C.....	441
Mancasellus.....	325	Medical zoology.....	308, 361
Manchuria.....	426	Medicine and Surgery Bureau.....	398, 430
cotton goods.....	365	Medicine, 14th International Congress.....	430
silk culture.....	394	Medicines, administering to horses.....	422
trade in 1902.....	318	patent.....	394
Maneuvers, <i>see</i> Maneuvers.....		Melittia satyriniformis Hbn.....	422
Manila, P. I., museum.....	323, 377	Memorial addresses, on A. J. Cummings.....	307
report of Municipal Board, 1902.....	323	on R. C. De Graffenried.....	359
Manila Observatory, publications.....	350	on J. A. Garfield.....	359
Manistique, Mich., chart.....	376	on Abraham Lincoln.....	359
Maneuvers, army and navy.....	321	on William McKinley.....	359
Fort Riley.....	404	on James McMillan.....	359

Page	Page
Memorial addresses, on J. M. Moody.. 387	Mining, Nicaragua..... 317, 345
on J. N. W. Rumble..... 359	Ontario..... 365
on C. A. Russell..... 335	Paraguay..... 317
on J. S. Salmon..... 335	Peru..... 345, 400
on W. J. Sewell..... 307	Salvador..... 317
on J. L. Sheppard..... 335	Mining Bureau, P. I..... 350, 440
on T. H. Tongue..... 335	Mining claims, Philippines..... 440
Memorial Bridge, D. C..... 435	Mink..... 324, 351
Memphremagog, Lake, beacons, etc.. 320	Minneapolis, U. S. S..... 316, 430
Menelik, king of Abyssinia..... 365	Minnesota, Chippewa lands.. 315, 370, 397
Merchant marine, Germany..... 394	labor laws..... 425
laws..... 312	labor statistics..... 338
Merchant vessels, <i>see</i> Shipping.	river improvement..... 437
Message of President, <i>see</i> President.	Minnesota University..... 422
Metals, scrap..... 349	Mint Bureau..... 320, 402
tests of, 1902..... 377	Mint machinery..... 365
Meteorites, Casas Grandes..... 324	Mississippi, mail contracts..... 372, 399
Meteorological service, Philippines..... 350	river and harbor improvement. 435, 437
Meteorology, <i>see</i> Weather Bureau.	swamp lands..... 420
Metric system..... 312	Mississippi, U. S. S..... 429
Mexican linaloe..... 365, 372	Mississippi River..... 436, 437
Mexico..... 317, 345, 372, 400, 426, 432	stages..... 310, 322
Comm. on International Exchange. 432	Mississippi River Commission..... 322
public health..... 345	Missouri, river improvement..... 435
stamp taxes..... 340	roads..... 363
steamship lines..... 366, 394	Missouri River..... 437
treaty with Nicaragua..... 373	Mitsukurii, Bleekeria..... 351
U. S. trade with..... 401	Mocha coffee..... 365
withdrawal of French..... 378	Molybdenum..... 341
Mexico Electric Tramways, Limited.. 345	Money orders..... 431
Mexico, Gulf of..... 423	Costa Rica and United States.. 372
mud..... 341	Peru and United States..... 400
tributaries..... 340	Monographs, Geological Survey.. 341
Michigan, rivers and harbors..... 436	Monongahela, U. S. S..... 398
Michigan City, Ind..... 437	Monongahela River..... 438
Michigan, Lake..... 322, 349, 376, 405, 437, 439	Mont Pelee, <i>see</i> Pelee Peak.
charts..... 376, 405	Montana, labor statistics..... 425
Microscope..... 339	Monterey steel plant..... 345
Middle Atlantic States, fisheries..... 408	Monthly Summary of Commerce and Finance, <i>see</i> Commerce and Finance, Monthly Summary.
Middle States Regatta Association..... 366	Monthly Weather Review, <i>see</i> Weather Review, Monthly.
Midshipmen, admission to Nav. Acad. 430	Moody, James M..... 387
Midway Islands..... 429	Moody v. Gudger..... 360
Milan, Ill..... 437	Mora, Ensenada de, chart..... 398
Milford Haven, Va., harbor..... 438	Morgan, John T..... 427
Military Academy..... 321	Moro dialect..... 440
board of visitors, report, 1903..... 376	Mortars, condemned..... 349
superintendent, report, 1903..... 403	Moseley, Alfred..... 426
Military art..... 348, 403, 435	Mosquitoes..... 345, 375, 434
Military Depts. and Divisions..... 376, 404	as carriers of disease..... 375, 434
Military dictionary, French-English.. 435	Moths..... 325
Military Information Div. 321, 348, 403, 434	codling..... 422
Military posts, lists of..... 376	Mud, Gulf of Mexico..... 341
<i>see also</i> names of forts.	Mule vs. zebra..... 394
Military reservations, <i>see</i> names of reservations.	Municipal Board of Manila, rp., 1902.. 323
Militia, roster..... 403	Municipal problems, Switzerland..... 378
Milk..... 308, 388	Municipal socialism..... 318
ewe's..... 388	Munt, John H..... 441
pasteurization of..... 394	Munt, Mary C..... 441
transportation..... 310	Museum-Gates expedition of 1901..... 379
Milk-stone..... 365	Museums, agricultural..... 373
Mindoro Sea, <i>see</i> Jolo.	anthropological..... 379
Mindoro Strait, sailing directions..... 346	industrial technological..... 432
Mineral nutrients in plants..... 309	Manila, P. I..... 323, 377
Mineral oil, <i>see</i> Petroleum.	sample..... 365
Mineral paints..... 341	Musical instruments, Germany..... 365
Mineral Resources of U. S., 1902, separate..... 313, 340, 341, 368, 369, 395, 396	Muskingum River..... 437
Minerals, Argentina..... 317	Naka Minato, chart..... 371
Brazil..... 317	Nakanosaku Hakuchi, chart..... 371
Canada..... 426	Nakoda Island, chart..... 398
Chile..... 432	Nanticoke, Md., topographic sheet.. 314
Guatemala..... 345	Nantucket, Mass., chart..... 392
Mexico..... 372	Nantucket Sound, chart..... 392
Mount Wrangell district..... 396	Naphtha launches..... 424
Peru..... 318	Narragansett Bay, chart..... 338
Russia..... 426	National Bureau of Standards..... 312
Mining, Bolivia..... 344	report, 1903..... 375
British Columbia..... 365	National Good Roads Association..... 362
Honduras..... 317	

	Page		Page
National Herbarium	324	New York Yacht Club	366
National Home for Disabled Volunteer Soldiers, <i>see</i> Nat. Soldiers' Home.		New Zealand, labor	425
National Museum	323, 350, 379	Newbern, N. C., topographic sheet	396
report, 1901	379	Newburgh, N. Y., topographic sheet	369
report upon condition, etc., 1902	379	Newfoundland, copyright	443
National Soldiers' Home	326, 409	Newport, R. I., Naval Training Station	430
Nature study	389	Niagara River	322, 349, 376, 405, 439
Nautical Almanac, 1904	371	Nicaragua	345
Nautical Almanac Office	371, 398	agricultural products	318
Nautical astronomy	316	gold mines	432
Naval Academy	399	mining	317
admission of midshipmen	430	sanitary conditions	345
board of visitors, report, 1903	343	tariff	400
Naval Gun Factory, report, 1903	430	treaty with Mexico	373
Naval Hospital Corps School of In- struction	430	Nickajack Cave, crustaceans	325
Naval hospitals	430	Nickel	396
New York City	430	Nicobar Islands, birds	324
Norfolk, Va.	430	Nile reservoir dam	407
Naval Proving Ground, Indian Head, report, 1903	430	Nishitomari Wan, chart	429
Naval stations, memoranda for officers United States, in Cuba	399	Nitrate Association, Chile	400
Naval supplies	317	Nitrate of soda, experiments	373
Naval test case	398	Nitrates, Chile	432
Naval Torpedo Station, report, 1903	430	Niuchwang	426
Naval Training Station, Newport, R. I. San Francisco, Cal	430	Noctuidæ	325
Naval training stations, Great Lakes	429	Norfolk, Va., harbor improvement	438
Naval War Records Office	399	naval hospital	430
report, 1903	430	North America, diptera	325
Navigable waters, bridge laws	349	parasitic copepods	325
Navigation, aerial	406	thysanoptera	351
decisions	319	veneridæ	351
fines and fees	433	North Carolina, mail contracts	372, 399
laws	312	river and harbor improvement	438
<i>see also</i> Amer. practical navigator.		North Dakota, labor statistics	338
Navigation Bureau, Commerce and Labor Dept.	312, 339, 366, 393	North East Harbor, chart	392
Navigation Bureau, Navy Department	316,	Northern and Northwestern Lakes Survey	322, 349, 376, 404, 439
343, 399, 430		Northern Pacific Railroad	397
Navigation Bur., Treas. Dept., <i>see</i> Nav. Bur., Commerce and Labor Dept.		Northport, L. I., topographic sheet	314
Navy, civil engineers	428	Northwest Harbor, chart	392
manœuvres	321	Norway, tariff	365
officers, list of	343	Norway spruce	356
signals of vessels	339	Notaries, Hungarian, in U. S.	393
vessels	393	Notropis	324, 351
Navy Dept.	315, 321, 343, 371, 397, 428, 432	Nottingham, England, lace	394
Navy Dept., Auditor for, <i>see</i> Auditor.		Nova Scotia, chart	316, 398
Navy-yards, <i>see</i> names of places where located.		copyright	443
Nazan Bay, chart	429	Nutrition, mineral, in plants	309
Nebraska, labor statistics	425	Nutrition, <i>see</i> Food.	
post route map	399	Nuts	393
transportation of horses	360	Oak, white	336
Negroes, Xenia, Ohio	338	Oberlin, Ohio, topographic sheet	314
Nervous system, horses	422	Obion River	435
Neutrality, of Great Britain	431	Obolus	324
Nevada, forage plants	309	Obstacles, destruction in campaigns	404
hog feeding	388	Occasional papers	404, 439
map	342	Occident, oriental culture in	407
New Brunswick, copyright	443	Occupations, world's	394
New Granada, <i>see</i> Colombia.		Ocean steamers	394
New Hampshire, quarantine of cattle	387	Ocean transportation companies	365
river and harbor improvement	436	Ocelot cats	325
New Harmony, Ind., topog. sheet	314	Officers, executive	387
New Jersey, labor laws	425	Indian service	315
river and harbor improvement	437	Marine Corps	343
New Mexico, orthoptera	324, 351	Navy	343
New South Wales, artesian wells	365	Pay Corps, Navy	317, 344, 371, 399
New South Wales Railway and Tram- way Ambulance Corps	425	Philippine Islands	350
New York Agric. Experiment Station	361	sailing vessels	366
New York Bay Regatta Association	366	sanitary	388
New York City, naval hospital	430	steamboats	366
New York Harbor	438	<i>see also</i> Army.	
New York State, river and harbor im- provement	436, 437	Offices, transferred from Treasury De- partment	319
		Official Gazette, Patent Office	315,
		342, 370, 397, 428	
		Philippines	322, 349, 377, 405, 440
		Official matter	401
		Official Postal Guide	317, 344, 372, 399, 430
		Ohio, drainage	369
		river and harbor improvement	435
		Ohio River	436, 438

	Page		Page
Oil, fish	408	Paraguay, public health	345
oleo	308, 388	textural plants and machinery	366
olive	318, 388	Parasites, copepods	325
<i>see also</i> Petroleum.		Park improvement papers	307
Oil engines	394	Parker, S. Dak.	427
Oken's names for fishes	324, 351	Parks	342
Oleo oil	308, 388	national, <i>see</i> names of existing parks.	
Oleomargarin	308, 388	Parliaments, France	378
Olive oil	318, 388	Passengers, conveyance by sea	366
Olives	318	courtesies to, at custom houses	373
Olivet, S. Dak., geologic atlas	395	Pasteurization of milk	394
Omura, Gulf of, chart	316	Patapasco River	438
Ontario formations, Maryland	351	Patent medicines, Germany	394
Ontario, enterprises	365	Patent Office	315, 342, 370, 397, 428
farmers' institutes	362	report to Secretary of Interior, 1903	370
hydraulic lock	318	Patentees, lists of	370, 397, 428
mining	365	Patents, Cuba	339
tar-macadam roads	318	Germany	394
Ontario, Lake	322, 349, 376, 405, 437, 439	Mexico	317, 372
Opahs	324, 351	new	365
Ophidioid fishes	325	<i>see also</i> Patent Office.	
Opinions of Attorneys-General	397	Patoka, Ind., topographic sheet	342
Oplegnathoid fishes	325	Pawcatuck River	435
Orange leaves, essence	365	Pay Corps, Navy	317, 343, 344, 371, 399
Orders, <i>see</i> Animal Industry Bureau—		Pay Department, Army, report, 1903	405
Executive.		Paymaster-gen., Army, <i>see</i> Pay Dept.	
Ordinance of 1787	359	Paymaster-general, Navy, <i>see</i> Supplies	
Ordinance, condemned	349, 376	and Accounts Bureau.	
instruction in	430	<i>Payne, Sveno E.</i>	421
Ordinance Bureau	430	Payson forest reserve	421
report, 1903	430	Peace palace at The Hague	345
Ordinance Department	322, 349, 376	Peach-tree borer	389
report, 1903	440	Peaches, cold storage	362
Ordinance stores, condemned	349, 376	Pearl Harbor	435
Oregon, archives	378	Pears, cold storage	362
forage plants	309	Pelee Peak	408
geology	396	Pelon, Cuba, chart	398
river and harbor improvement	438	Pennsylvania, river improvement	438
Orient, American hosiery	426	road law	363
British vs. German shipping	394	Pensacola, U. S. T. S.	316
culture of, in the Occident	407	Pension Appeals Board	340
Russian enterprise in	394	Pension Bureau	428
steamship service	426	report, 1903	370
Orinoco River	373	Pensions, decisions	313, 340, 368, 395, 426
Orthoptera	324, 351	Pensions, committee, Senate	420
Osage River	437	Peril Strait, chart	392
Osaka, Japan, exhibition	318, 339, 365	Permian formation, Kansas	396
Ose Hakuchi, chart	371	Peru	317, 345, 373, 400, 432
Osteology, of fishes	324, 325	industrial conditions	365
of fossil birds	351	mineral and agricultural resources	318
Ostracopods	324, 351	trade with Bolivia	317
Ozone, purifying water by	394	Pesos, Philippines	432
Pacific Cable, Commercial	317	Pestis bacillus	434
Pacific Coast, pilot rules	340	Petit grain	365
tide tables	312	Petrel, U. S. S.	371
Pacific Coaster's Nautical Almanac	398	Petrography	407
Pacific Ocean, pilot charts	316,	Petroleum, exports	321, 340, 368, 393, 425
343, 371, 398, 429		Germany	339
Pacific railroads	397	Gulf coastal plain	341
Packing, goods for foreign markets	339	Roumania	365
Paints, mineral	341	Santo Domingo	344
Palace of peace at The Hague	345	Petty officers, Navy	343
Palapag, Port, chart	374	Phasmidae	325, 351
Palawan, <i>see</i> Paragua.		Philadelphia, Pa., dietary studies	309
Paleontology, Kansas	396	Philadelphia, U. S. S.	429
Palmyra, Mo., topographic sheet	428	Philippine Commission, 2d, laws	377, 440
Pamphlets, in House folding room	420	Philippine Islands	322, 349, 377, 405, 440
Pan-Amer. Expos., Nat. Mus. exhibit	379	Agriculture Bureau	322, 349, 377, 405, 440
Smithsonian Institution exhibit	407	bibliography	442, 443
Panama	432	botany	440
Panama Canal	378, 406	cacao	349
Panama, Isthmus of, transit traffic	344	certificates of indebtedness	322
Paper, factory in Venezuela	401	chart	371
Pará, Brazil	317	civil service	405
Paragua	402	Civil Service Board	350, 377, 405
Paraguay	373, 432	civil service register	350
bills of lading	393	cocoanuts	405
birds	324	commerce	322, 349, 376, 440
business opportunities in	426	crops	323, 440
mining	317	earthquakes	323, 440

	Page		Page
Philippine Islands, eucalyptus.....	351	Porto Rico, public lands.....	307
exhibit for La. Purchase Expos.	323, 377	soil.....	422
Exposition Board.....	323, 377	War with Spain correspondence.....	321
1st Battalion of Engineers.....	439	Porto Rico Agric. Experiment Station.....	422
Govt. Laboratories Bureau.....	323, 377	Ports of delivery.....	401
insects.....	323	Ports of entry.....	401
insurrection.....	321	Posey County, Ind.....	390
maps in Library of Congress.....	442, 443	Post-Office Department. 317, 344, 372, 399, 430	
meteorological service.....	350	orders.....	374
Mining Bureau.....	350, 440	Post-Office Dept., Auditor for, <i>see</i>	
peso sign.....	432	Auditor.....	
rinderpest of cattle and carabaos.....	377	Post-offices, supplies.....	431
soil.....	323	Post route maps.....	399, 400
trypanosomiasis of horses.....	323	Postal convention, Cuba and U. S.	372, 400
War with Spain correspondence.....	321	Postal Guide, Official. 317, 344, 372, 399, 430	
Weather Bureau.....	323, 350, 440	Postal money orders, <i>see</i> Money orders.	
Philosophical articles, free entry.....	346	Postal service.....	431
Phoenicia, N. Y., topographic sheet.....	369	fraudulent insurance companies.....	419
Phonetics.....	407	Postal statistics, Germany, 1900.....	394
Phosphates.....	341	international, 1901.....	431
Barbuda Islands.....	339	Postmaster-Gen., <i>see</i> Post-Office Dept.	
Photographic outfits, Signal Corps.....	350	Postmaster-General, 1st Asst., rp., 1903. 431	
Picea, excelsa.....	336	Postmaster-General, 2d Assistant.....	431
Piedmont, cocoon crop.....	393	report, 1903.....	431
Pigeon Bayou.....	436	Posts, military, <i>see</i> Military posts.	
Pigs, <i>see</i> Hogs.		Potomac River.....	438
Pilot charts.....	316, 343, 371, 398, 429	bridges.....	435
Pilot rules.....	340	Poultry.....	308, 388
Pilots, licensed.....	312	Hungary.....	394
Pine lands, Chippewa.....	315, 370	Powell, John W.....	407
Pine Ridge Reservation.....	360	Precious stones.....	396
Pines, Isle of.....	317, 431	Presbyterian Ch., Huttonsville, W. Va.	441
Pittsburg, Pa., harbor improvement.....	438	Preservatives, in food.....	310
Placer formations.....	440	Preserving, of fruit.....	394
Plague.....	434	President of U. S.	307, 335, 360, 387, 421
Plankton algae.....	352	Press, and roads.....	363
Plant Industry Bureau 309, 336, 362, 389, 422		Price list, Hydrographic Office.....	429
Plants, distribution circulars.....	309	Primer of forestry.....	309
distribution in Philippines.....	377	Prince Edward Island, copyright.....	443
fossil.....	396	Princeton, Ind., topographic sheet.....	314
introduction from south Africa.....	309	Print goods, south Africa.....	365
mineral nutrients.....	309	Printing Committee, Senate.....	420
Porto Rico.....	324	Prioleau v. Legare.....	360
propagation.....	336	Prison Commission, International.....	373
textural.....	366	Prison regulations, Southey, U. S. S.	343
<i>see also</i> Plant Industry Bureau.		Prison ships.....	343
Plaquemine Bayou.....	436	Prisons, modern systems.....	373
Plate River, <i>see</i> Rio de la Plata.		Proceedings, National Museum.....	324, 350
Platinum.....	369, 440	Procelsterna.....	351
Platt, Thomas C.....	420	Proclamations of President.....	307, 335, 360, 387, 421
Plug tobacco.....	374	Prodelphinus.....	380
Pocatello forest reserve.....	360	Professional papers, Geol. Surv. 213, 369, 396	
Point Reyes, Cal.....	310	Projectiles, condemned.....	349
Points, for vaccination.....	434	Propagation, of fruit-trees, etc.....	336
Polar regions, <i>see</i> Arctic regions.		of wild rice.....	336
Political science.....	432	Prophylaxis, against yellow fever. 320, 345	
Politics, Indiana.....	378	Proprietary stamps.....	402
Pollak-Virg rapid telegraph.....	340	Protector from live wires.....	318
Population, Alaska.....	367	Protein.....	388
colonies of world.....	375	Providence, R. I.....	337
Cuba.....	394	Proving Ground, Indian Head.....	430
South American Republics.....	400	Sandy Hook.....	376
white, in British colonies.....	393	Provisions, exports.....	321, 340, 368, 399, 425
<i>see also</i> Census Office.		Pruning.....	423
Porcelain, Germany.....	394	Prunus serotina.....	362
Pork, <i>see</i> Hogs.		Prussia, crops.....	339
Porpoise.....	380	electric railroads.....	393
Port, <i>see</i> name of port.		meat-inspection law.....	394
Port movements, Argentina.....	317, 344, 372, 400, 432	Pseudarmadillo.....	325
Uruguay.....	317, 345, 373, 401, 432	Public Archives Commission.....	378
Port Orchard, Wash., chart.....	312	Public buildings.....	346
Portland, Me., harbor improvement.....	436	Porto Rico.....	360
Portland cement.....	365, 427	Public documents, <i>see</i> Documents.	
Porto Rico, chart.....	424	Public health, American Republics.....	345
fisheries.....	380	animal diseases affecting.....	388
hailstorms.....	310	Public Health and Marine Hospital	
mail contracts.....	399	Service.....	320, 345, 347, 375, 403, 434
plants.....	324	report, 1901.....	375
public buildings.....	360	Public Health Association, American. 391	

	Page		Page
Public Health Reports.....	320, 347, 375, 403, 434	Rathdrum, Idaho, topographic sheet.....	314
Public lands, decisions.....	368, 395	Rattulidae.....	325
Porto Rico.....	307	Reappraisements.....	319, 346, 374, 401, 433
town sites, etc.....	342	Rebellion, <i>see</i> Civil War.	
<i>see also</i> Land Office, General.		Receipts.....	374
Public Lands Committee, Senate.....	420	for special deposits.....	346
Public laws.....	419	Treasury Department.....	433
Public Moneys Division.....	346, 433	Reciprocity, Cuba and United States.....	394, 419, 420, 421, 431
Public Road Inquiries Office.....	336, 362, 422	Reclamation, of arid lands.....	423
Public works, German cities.....	394	Reclamation Service.....	341
Publications, Agriculture Department.....	310, 337, 363, 389, 423	Record, Congressional.....	419
American Historical Association.....	378	Record and Pension Office, report, 1903.....	405
American Republics Bureau.....	345	Rectifiers, tax-paid spirits.....	402
Amer. Society of Church History.....	378	Red Hook Channel, N. Y., harbor.....	438
Chemistry Bureau.....	336	Red Lake Reservation.....	397
Geological Survey.....	313, 341	Red River of the North.....	340, 437
Library of Congress.....	380	Reformed Church, Sharpsburg, Md.....	441
Manila Observatory.....	350	Register, Army.....	321, 348
Public Road Inquiries Office.....	336	Attorney-General's Office.....	315
Statistics Bureau, Commerce and Labor Department.....	312, 368	Interior Department.....	340
Publications Division.....	310, 337, 363, 389, 423	Life-Saving Service.....	347
Puerto Cabello, Venezuela.....	373	Philippine civil service.....	350
Puerto Princesa, P. I., chart.....	367	Register of Treasury, report, 1903.....	403
Puerto Rico, <i>see</i> Porto Rico.		Règne animal.....	324, 351
Pumice, artificial.....	394	Reindeer.....	407
Purus River.....	379	Remainder interests.....	374
Put-in-Bay, Ohio, topog. sheet.....	342	Reports, public officers to Congress.....	420
Pygmies.....	407	Representatives, mileage.....	419
Pyrethrum powders.....	308	<i>see also</i> House.	
Pyrheliometer, Angstrom.....	337, 363	Reptiles, Huachuca Mountains.....	325
Pyrite.....	313	Rescue grass.....	309
Quarantine, maritime.....	345	Reservations, <i>see</i> names of reservations.	
of cattle.....	360, 387	Reservoirs, Stony Creek.....	396
of swine.....	360	Resolutions, joint, <i>see</i> Laws.	
United States.....	345	Respiratory organs, horses.....	422
Uruguay.....	345	Return certificates, for Chinese.....	364
Quarantine stations.....	388	Revenue, Argentina.....	400
Quartermaster's Department.....	350	Cuba.....	394
report, 1903.....	440	Mexico.....	345
signals of vessels.....	339	<i>see also</i> Internal revenue.	
vessels.....	393	Revenue Cutter Service, vessel signals.....	339
Quay, Matthew S.....	419	Revolution, Isthmus of Panama.....	432
Quebec, agricultural schools.....	425	Reynolds v. Butler.....	420
electric railroads.....	318	Rhode Island, chart.....	338
Queen, steamer.....	394	river and harbor improvement.....	436
Quercus alba.....	336	Rice.....	350
Quicksilver.....	341	wild.....	356
Quinine, auction in Batavia.....	339	Richmond, U. S. R. S.....	430
Quintana Roo.....	345	Riley, Fort, Cavalry and Field Artillery School.....	348, 404
Radiation.....	407	manœuvres.....	404
solar.....	357	Rinderpest.....	377
Radio-activity of matter.....	407	Río de la Plata.....	432
Railroad land grants.....	397	Ripe rot.....	309
Railroads, accidents.....	352, 442	Rivers, Italy.....	365
Alaska.....	367	measurements.....	369, 427
brakes.....	352, 393	Rivers and harbors, <i>see</i> Engineer Department, Army.	
British Honduras.....	318	Road Material Laboratory.....	422
cars for coal mines.....	442	Roads, tar-macadam.....	318
Egypt.....	365	testing of materials for.....	422
electric lighting.....	426	<i>see also</i> Public Road Inquiries Office.	
engine cars.....	426	Roane County, Tenn.....	360
freight rates.....	318	Rock River.....	362
Luzon.....	376	Rock-trout.....	325, 351
order in stations.....	365	Rockaway Inlet, chart.....	392
Peru.....	345	Rocks.....	407
statistics.....	345, 352	bituminous.....	313
street.....	313	igneous.....	313
United States.....	352, 408	Rocky Mountains, spotted or tick fever.....	403
Veracruz.....	318, 345	Rolls and Library Bureau.....	373, 432
<i>see also</i> Cable railroads—Electric railroads—names of railroads.		Rosebud Reservation.....	360
Railways, <i>see</i> Railroads.		Roster, of examining surgeons, Pension Bureau.....	428
Rainfall.....	341	of militia of United States.....	403
Washington State.....	310	Rot, bitter.....	309
Rambler mine, Wyo.....	369	Rotatoria.....	325
Ramona, Cal., topographic sheet.....	369	Roubaix, France.....	394
Raquette Lake, N. Y., topog. sheet.....	342	Roumania, petroleum.....	365
Rate of exchange, Mexico.....	317		

	Page		Page
Rubber.....	373	Scabies, of cattle.....	388
Australasia.....	365	of sheep.....	308, 388
Brazil.....	344, 394	Scarlet fever.....	403
Rubber goods, Germany.....	394	School gardening.....	389
Rubber plant.....	365	Schools, agricultural.....	425
Rubber-tree, Central America.....	389	agriculture for.....	389
Rules, House.....	420	industrial.....	365
Senate.....	307	relation of roads to.....	363
Rules Committee, House.....	420	Schwarz, E. A.....	325
Senate.....	307	Scientific articles, free entry.....	346
Rumania, <i>see</i> Roumania.....		Scotland, Americanizing industries.....	394
Rumford, Count.....	363	meteorological observations.....	310
Rumple, John N. W.....	359	Sculpin.....	351
Run-off, relation of rainfall to.....	341	Sea, conveyance of passengers by.....	366
Russell, Charles A.....	335	weather reports made at.....	337
Russia, enterprise in the Orient.....	394	Sea anemone.....	351
exports.....	394	Seal, Commerce and Labor Dept.....	366
minerals.....	426	commissioner of corporations.....	391
petroleum in Germany.....	339	Seal fisheries, Uruguay.....	345
sugar law.....	366	Seaman's Friend Society.....	441
Saccharine plant.....	400	Seamen, <i>see</i> Sailors.....	
Saddle horses.....	336	Secret Service Division, report, 1903.....	321
Sagartia paguri Verrill.....	351	Secretary, <i>see</i> for departmental secre-	
Sailing directions, Mindoro Strait, etc.....	346	taries, names of Departments.....	
Paragua.....	402	Securities, <i>see</i> Government Actuary.....	
Sailing routes, <i>see</i> Pilot charts.....		Seeds, distribution circulars.....	309
Sailing vessels.....	366	distribution in Philippines.....	377
Sailors, alien.....	366	sugar-beet.....	361
ordnance instruction.....	430	Seeing.....	406
St. Clair County, Ill.....	390	Seine River, tunnel under.....	318
St. Clair, Lake.....	322, 349, 376, 405, 439	Seismic disturbances, <i>see</i> Earthquakes.....	
chart.....	322	Seismographs.....	337
St. Clair River.....	322, 349, 376, 405, 439	Seizures, reports concerning.....	374
St. Helena.....	394	Selenium.....	426
St. Helena Sound, chart.....	424	Semidi Islands, chart.....	392
St. Lawrence River.....	322, 349, 376, 405, 437, 439	Senate.....	307, 359, 419
St. Louis, Mo., exposition, <i>see</i> Louisi-		documents.....	420
ana Purchase Exposition.....		Senators, documents for.....	420
St. Louis River, chart.....	405	mileage.....	419
St. Marys River.....	322, 349, 376, 405, 439	Series note.....	326
St. Paul's Epis. Ch., Franklin, Tenn.....	441	Sewage, <i>see</i> Sewerage.....	
St. Vincent.....	408	Sewell, William J.....	307
Salamanders.....	351	Sewerage and sewers, bacteria beds for.....	394
Salaries, postal service.....	431	Seymour, ship.....	441
Salavery, Peru.....	373	Shafroth, John F., contested election.....	359
Saline waters for irrigation.....	310	Sharks, squaloid.....	325
Salmon, Joshua S.....	335	Sharpsburg, Md.....	441
Salt, Peru.....	373	Sheep.....	388
Salt marsh lands.....	390	Argentina.....	372, 432
Salvador.....	317	inspection and quarantine.....	360
consular invoicees.....	373	western States.....	362, 388
tariff.....	400	<i>see also</i> Lambs.....	
Salvation Army, farm colonies.....	338	Sheep-bound reserve.....	307, 335, 360, 387, 421
Sample museums.....	365	index.....	442
San Antonio Mts., topographic sheet.....	314	Sheep scab.....	308, 388
Sandy Hook Proving Ground.....	376	Sheppard, John L.....	335
San Francisco, Cal., chart.....	367	Shimabara, Gulf of, chart.....	316
Naval Training Station.....	430	Shipbuilding.....	373
steamship service.....	426	Shipments, to depositories.....	327,
San Francisco Bay, chart.....	312	353, 381, 411, 445	
Sanitary Convention of American		Shippers, of grain.....	426
Republics, International.....	345	Shipping, British vs. German, in Orient.....	394
Sanitary officers.....	388	masters, mates, etc.....	312
Sanitation, congested areas.....	394	memoranda for officers.....	399
Nicaragua.....	345	merchant vessels, lists of.....	339, 393
simplicity in measures.....	345	mosquitoes carried by vessels.....	345
Uruguay.....	345	quarantine.....	345
Sannina exitiosa Say.....	389	sailing vessels.....	366
San Salvador, <i>see</i> Salvador.....		signals.....	339
Santa Paula, Cal., topographic sheet.....	427	upbuilding in foreign trade.....	419
Santiago, Cuba, trade.....	318	weather reports at sea.....	337
Santo Domingo.....	400	yellow fever aboard ships.....	430
petroleum.....	344	<i>see also</i> Steamboats.....	
Santos, Brazil.....	372	Shoing, of horses.....	388, 422
San Vicente, P. I., chart.....	367	Shoes, <i>see</i> Boots and shoes.....	
Sao Paulo (State), immigration.....	372	Shoulder girdle, of fishes.....	325
Saragolla wheat.....	309	Shumagin Islands, chart.....	392
Sardines, France.....	426	Siam.....	318, 394
Sault Ste. Marie, freight tonnage.....	366	Siberia.....	365, 426
Saxony, commercial education.....	393	fur industry.....	318

Page	Page
Siberian Railway, <i>see</i> Transsiberian Ry.	Spirits, bonded 402
Signal Corps, telegraph in Alaska, etc. 441	distilled 320, 375, 400, 433
Signal Office 350	imported 401
report, 1903 441	tax-paid 402
Signals, United States vessels 339, 393	Splenetic fever 387
Signs, weather 423	Sponges 380
Silk, imitation 396	Spotted fever 403
Manchuria 394	Springfield, Mass., dietary studies 309
Siluroïd fishes 324, 351	Spruce, Norway 336
Silver 400	Squabs 308
coinage in Venezuela 317	Squaloid sharks 325
production 432	Squash-vine borer 422
Silver dollars 372	Stamp taxes, Mexico 340
Silverton, Colo., economic geology 396	Stamps, documentary 402
Simeonof Harbor, chart 392	proprietary 402
Simplon tunnel 339	Standards, National Bureau of, <i>see</i>
<i>Sims, Thelus W.</i> , contested election 360	National Bureau of Standards.
Skin diseases, of horses 422	Stanton, Fort 434
Skins, of aquatic animals 408	Stars 407
Skulls 407	State Department 317, 344, 372, 400, 431
Slag, Portland cement from 365	States, river & harbor appropriations 322
Smallpox 347, 403	road building 363
Smith, Isaac 441	Stations, railroad 365
Smithsonian contributions to knowl- edge 407, 442	Statistical atlas 427
Smithsonian Inst. 323, 350, 378, 406, 442	Statistical bulletin 312, 338, 367, 392, 425
report, 1902 407	Statistics, <i>see</i> Census Office—subjects on which statistics are wanted.
Snag boats 437, 438	Statistics Bureau Agriculture Dept. 310, 423
Snake River 438	Statistics Bureau, Commerce and La- bor Department. 312, 339, 367, 393, 425
Snoqualmie Pass, topographic sheet 369	Statistics Bur., Treasury Dept. 321, 348, 375
Snuff 402	<i>see also</i> Statistics Bureau, Com- merce and Labor Dept.
manufacturers' losses 402	Statistics Division, Interstate Com- merce Commission 352, 408
tax 320	Statutes, <i>see</i> Laws.
Soap, Honduras 345	Steam Engineering Bureau, rp., 1903 430
Soapstone 369	Steamboat Inspection Serv. 312, 340, 366, 424
Socialism, municipal 318	report, 1903 434
Soil, Philippines 323	Steamboats 366
Porto Rico 422	Argentina and Great Britain 372
temperatures 390	Australian, etc., service 426
Union Province 323, 350	British contracts 339
<i>see also</i> Soils Bureau.	Chile 400
Soils Bureau 310, 363, 389, 422, 423	Copenhagen and Baltic ports 340
Solar, <i>see</i> Sun.	cross-channel turbine 394
Soldier's handbook 321	European-Mexican 366
Soldiers' Home, D. C., report, 1903 377	Germany 394
Soldiers' Home, National, <i>see</i> National Soldiers' Home.	La Rochelle to Canada 318
Solicitor, acting, Commerce and Labor Department 366	masters, mates, etc. 312
Soo, <i>see</i> Sault Ste. Marie.	Mexico 317, 372, 394
Sorghum 388	southeast Africa 394
Soudan, <i>see</i> Sudan.	transatlantic routes 316
Soufrière 408	United States to foreign ports 395
South, roads 363	Steel 394
South Africa, <i>see</i> Africa.	Steers, feeding 388
South America, birds 324	Stegomyia fasciata 434
German trade with 400, 426	Stellar evolution 407
internat. competition in markets 339	Stewart, David 441
mal de caderas 388	Stewart, John 441
<i>see also</i> American Republics Bureau.	Stone, manufactured 426
South Atlantic blockading squadron 399	Stony Creek 396
South Carolina, labor laws 425	Storage, cold 362
mail contracts 372, 399	Storage reservoirs 396
river and harbor improvement 438	Storekeepers 373
South Dakota, transportation of horses 360	Stores, department 393
Southern, U. S. S 343	Storm tracks, <i>see</i> Pilot charts.
Spain, American cement machinery 393	Storms, <i>see</i> Weather Bureau.
mining claims in Philippines 440	Strait, <i>see</i> name of strait.
olives 318	Stratigraphy, Kansas 396
trade 318	Streams, <i>see</i> Rivers.
United States trade with 394	Street-Cleaning Dept., D. C., rp., 1903 406
<i>see also</i> War with Spain.	Street railroads 313
Spanish America, <i>see</i> American Repub- lics Bureau.	<i>see also</i> Electric railroads.
Spanish-American War, <i>see</i> War with Spain.	Streets, District of Columbia 406
Spanish Treaty Claims Commission 326	Strike, Bohemian glassworkers 339, 365
Special Agents Division 401	Strontium 341
Special Consular Reports 393	Submarine cables 343
Spiders 325	Subsistence Department 350
	report, 1903 405

	Page		Page
Sudan, iron	339	Tariff decisions	319, 346, 374, 401, 433
Suez Canal	318, 366, 378	France	339
Sugar, Argentina	344	Germany	339, 365, 426
Brazil	432	Great Britain	393, 426
collection of tariff	401	Guatemala	400
Costa Rica	400	Mexico	372, 400, 432
Cuba	340, 400	Nicaragua	400
cultivation	405	Norway	365
France	426	on undervalued property	373
Germany	394	Peru	432
identification of	401	Salvador	400
imports	373, 374	Sugar	401
law in Russia	366	United States	340
Mexico	345	Uruguay	345, 432
<i>see also</i> Beet sugar		Venezuela	345, 366, 432
Sugar beets, food for cattle	366	<i>see also</i> names of articles imported	
influence of environment on	422	Taste, in fishes	326
insect enemies	361	Taxes, Chile	372
<i>see also</i> Beet sugar		District of Columbia	441
Sugar producers, West Indies	394	Income	365
Suit protector against live wires	318	legacy	374
Sulphur	313	Mexico	317, 340, 345
Sulu, <i>see</i> Jolo		railroads	352
Sumatra, birds	351	tobacco, snuff, etc.	320
mammals	351	Tazewell County, Ill.	390
Sun	407	Tea	426
effect on meteorology	337	Teche Bayou	436
radiation	337, 363	Technical education	426
Sun-fish	380	Technological museums	432
Sun spots	390	Teljon Pass, topographic sheet	314
Superintendent of documents, <i>see</i> Documents Office		Telegraph	343
Superior, Wis., chart	405	Alaska	367
Superior, Lake	322, 349, 376, 405, 438, 439	Government rates	374, 424
Supervising Architect, <i>see</i> Architect, Supervising		Pollak-Virag rapid	340
Supervising surgeon-general, <i>see</i> Public Health and Marine Hospital Service		Signal Corps	441
Supplies, post-offices	431	statistics, 1900	394
Supplies and Accounts Bur.	317, 344, 371, 399	wireless	398, 408
report, 1903	430	Telephones, Anglo-Belgian	366
Supreme Court, appeals	323	statistics, 1900	394
Surgeon-general, Army, <i>see</i> Medical Department, Army		Tellurium	426
Surgeon-general, Navy, <i>see</i> Medicine and Surgery Bureau		Telpherage	407
Surgeon-general, Public Health and Marine Hospital Service, <i>see</i> Public Health and Marine Hospital Service		Temperature, of soil	390
Surgeons, Pension Bureau	428	Tennessee, mail contracts	372, 399
Surgical clinics	375	Tennessee River	438
Surgical technique	430	Test cases, naval	398
Surra	422	Tests of metals, 1902	377
Surtax, France	339	Texas, Bexar archives	378
Suwanee River	436	orthoptera	324, 351
Swamp lands, Mississippi	420	petroleum	341
Swine, <i>see</i> Hogs		rivers and harbors	436, 437, 438
Switzerland, municipal problems	378	Textural machinery	366
Synentognathous fishes	351	Textural plants	366
Tables, for navigators	343	Thanksgiving Day, proclamation	387
geographic	313	Thompson, Benjamin	363
Tactical evolution	404	Thoroughgood & Isaac Smith	441
Tahiti, copra	426	Thuringia, doll trade	426
vanilla beans	426	Thysanoptera	351
Takosis	361, 388	Tick fever	403
Talc	369	Tide tables	312, 424
Talial Railway	432	Atlantic Coast	311
Tamatave, Madagascar	429	Pacific Coast	312
Tampa Bay, charts	367, 424	Tientsin, China	340
Tar-macadam roads	318	Tin, Malay States	394
Tarboro, N. C., topographic sheet	314	Tioga, Pa., geologic atlas	341
Tariff, British Guiana	318	Tippecanoe Lake, darter	351
Canada	318	Titicaca, Lake	372
Chile	344	Toamasina, Madagascar, <i>see</i> Tamatave	
collectors of	346	Tobacco	322, 402
Colombia	318, 339, 372, 393	American trust in Germany	394
Costa Rica	344, 400, 432	Belgium	366
Cuba	372, 394, 395, 400	Cuba	400
		dealers	402
		distribution of seed	422
		manufacturers' losses	402
		packages	374
		tax	320
		wilt disease	362
		Toledo, Ohio	390
		<i>Tongue, Thomas H.</i>	335
		Tool-machinery	426

	Page
Tools	349
American, in Roubaix	394
Topographer	399
Topographic sheets .. 313, 341, 369, 396, 427	
Tornadoes, Gainesville, Ga	337
Torpedo (catfish)	351
Torpedo Station, Naval	430
Town sites	342
Toys, Germany	394
Traction, electric	426
Trade, consular reports. 317, 345, 375, 401, 432	
<i>see also</i> Commerce—Exports—Imports—names of countries and places.	
Trade-marks, Cuba	339
decisions	342
Mexico	317, 372
<i>see also</i> Official Gazette, Patent Off.	
Trades exhibition	393
Trains, collisions and derailments. 352, 442	
Trans-Andine Railway	318, 432
Transatlantic steamship routes	316
Transatlantique, Compagnie Générale. 365	
Transportation, immediate	346, 373
of cattle	387
of distilled spirits	320
of horses	360
of mails	431
of milk	310
transportation agencies, taxes	352
transportation companies, ocean	365
transportation routes, Alaska	367
Cuba	394
Transsiberian Railway	366
Transvaal, immigrants into	318
Imports	366, 426
Traverse	341
Treasurer of United States	403
report, 1903	403
Treasury decisions .. 319, 346, 374, 401, 433	
Treasury Department .. 319, 346, 373, 401, 433	
collection of sugar duties	401
statement, 1903	401
Treasury Department, Auditor for, <i>see</i> Auditor.	
Treaties, Chinese exclusion	338, 367
commercial	318
Hay-Pauncefote	378
<i>see also</i> names of countries.	
Trees, Australian	366
forest	336, 362
fruit	336
Trenton, N. J.	390
Triangulation	341
Trigger-fishes	325
Trinidad, trade	373
Troops, <i>see</i> Army.	
Tropics, products of, in U. S.	432
Trout, rock	325
Trunk-fishes	325
Trunks, tobacco	394
Trutté bacteria	380
Trypanosoma Lewisii	320
Trypanosomatic diseases	388
Trypanosomiasis	323
Tsugaru Strait, chart	316
Tubercle bacillus	308, 388
Tuberculin test of cattle	361, 388
Tuberculosis	434
bovine	388
new treatment	340
Tumors, intracranial	370
Tungsten	341
Tunnels, under Seine River	318
Turkey, American pork	394
Turntable, electric	366
Twist tobacco	374
Typhoons, east Asiatic waters. 316, 343, 371	
Typhus, prevention	366
Uchiura Wan, chart	371

	Page
Ulrick & Williams	352
Uncinariasis	348
Union County, Ky	390
Union Province	323, 350
United Kingdom, <i>see</i> Great Britain.	
United States coast pilot	319, 391
Universities, marine	406
University of Göttingen	361
University of Minnesota	422
University of Wisconsin	362
Uranium	341
Urinary organs, horses	422
Uruguay	317, 345, 373, 401, 432
commerce, 1902	318
public health	345
Useful tables, for navigators	343
Utah, post route map	400
Vaccine	434
Valparaiso, Chile, harbor	394
Vanadium	341
Vanilla beans	426
Various bureaus	325, 351, 379, 408, 442
Vegetable Physiology and Pathology	
Division	309
Vegetation	390
Vehicles, Chile	372
foreign markets for	393
Veneral diseases	321
Veneridæ	351
Venezuela	317, 373, 401, 432
tariff	345, 366
Veracruz, railroads	318, 345
Vermilion, Ohio, topographic sheet ..	428
Vermilion district, Minn	341, 396
Vermont, labor laws	338
quarantine of swine	360
river and harbor improvement	436
Vernon area, Tex	363
Vessels, propelled by gas, etc	424
<i>see also</i> Shipping—Steamboats.	
Veterans, preferred as Govt. employees	320
Veterinary Medical Assoc., American. 389	
Veterinary zoology	308, 361
Vicksburg, Miss	310
Virchow, Rudolf	408
Virginia, labor laws	425
river and harbor improvement	438
Virus	434
Voges, O	388
Volcanoes	408
Volunteers, War with Spain	321
Wabash River	436
Waccamaw River	438
Wages	427
Walking-sticks	325, 351
Walnut-trees, black	362
Walrus	351
War Department	321, 348, 376, 403, 434
War Dept., Auditor for, <i>see</i> Auditor.	
War of Rebellion, <i>see</i> Civil War.	
War-ships	429
armor-plate for	343
War with Spain	321
Warehouses, bonded	373
Warroad River	437
Warwick, Emma N	441
Warwick, John W	441
Washington, D. C., <i>see</i> District of Columbia.	
Washington Aqueduct	435
Washington Barracks	404, 439
Washington Hospital for Foundlings, report, 1903	342
Washington Monument	359
Washington Nat. Monument Society ..	359
Washington Navy-Yard	430
Washington State, chart	425
forage plants	309
rainfall	310
river and harbor improvement	439

	Page		Page
Water, filtration of.....	375	Wild rice.....	336
for irrigation.....	310	Willamette River.....	439
in boilers.....	365	<i>Williams, John S.</i>	421
in creamery butter.....	388	Wilmington, N. C.....	441
northeastern United States.....	315	Wilt disease of tobacco.....	362
purifying by ozone.....	394	Windmills, Siam.....	318
waste in public buildings.....	346	Window-glass, Germany.....	394
Water storage, Colorado.....	362	Winds.....	310
Water-supply, District of Columbia.....	435	Wine, France.....	318
Water-supply papers.....	315, 341, 368, 369, 396, 427	Germany.....	366
Waterspouts.....	310	Wing venation, dragon-fly.....	351
Watertown Arsenal.....	377	Winnibigoshish Reservation.....	315, 370
Waukon, Iowa, topographic sheet.....	369	Winter winds.....	310
Wax, fish.....	408	Wireless telegraphy.....	408
Ways and Means Committee.....	421	stations.....	398
Weather, <i>see</i> Weather Bureau.		Wires, live, suit protector from.....	318
Weather Bureau, Agriculture Department.....	310, 337, 363, 390, 423	Wisconsin, river improvement.....	437
Weather Bureau, P. I.....	323, 440	Wisconsin Agricultural Experiment Station.....	361
report, 1902.....	350	Wisconsin University.....	362
Weather Review, Monthly.....	310, 337, 363, 390, 423	Witzenhausen, Germany.....	359
Weaving.....	378	Wood, method of drying.....	366
Weights and measures.....	312	silk made from.....	366
metric.....	312	Woodman, Alfred.....	420
Wells, artesian.....	365	Wool.....	388
Welsh mountain sheep.....	388	Wooster, Ohio, topographic sheet.....	396
West Canada Lakes, topog. sheet.....	314	World's Columbian Exposition, A. L. A. library.....	427
West Indies, British.....	393	World's Fair, St. Louis, <i>see</i> Louisiana Purchase Exposition.....	
hurricanes.....	343, 423	Wounds, treatment for horses.....	422
sugar producers.....	394	Wrangell, Mount.....	396
tide tables.....	311	Wyoming, roads and bridges.....	459
West Point, N. Y., <i>see</i> Military Academy.		Xenia, Ohio, negroes.....	338
West Virginia, courts of U. S.....	442	Yacht races, international.....	366
drainage.....	369	Yachts, signals.....	339
West Virginia Northern Railroad Co.....	442	Yang-tze-kiang.....	365
Western States, sheep.....	362, 388	Yellow fever.....	320, 345, 430
Wethers.....	388	<i>see also</i> Yellow Fever Institute.....	
Wheat.....	336	Yellow Fever Institute.....	320
Australia.....	393	Yellow-fever mosquitoes.....	375
Malta.....	340	Yellowstone National Park.....	439
Saragolla.....	309	Yellville, Ark., topographic sheet.....	314
Wheat bran, protein in.....	388	Yes Bay, chart.....	319
White ash.....	336	Yezo, <i>see</i> Hokushu.....	
White Earth Reservation.....	397	Yukon Harbor, chart.....	392
White House.....	335	Zebrula vs. mule.....	394
White oak.....	336	Zero, absolute.....	406
White River.....	436	Zoology.....	408
Wichita, Kans.....	352	index-catalogue.....	308, 361