

No. 55

July, 1899

CATALOGUE

OF

United States

Public Documents

Issued Monthly

BY THE

SUPERINTENDENT OF DOCUMENTS

Government Printing Office

Washington
Government Printing Office
1899

Table of Contents

Page	Page		
General Information	335	Department of Justice	349
Congress of United States	337	Post-Office Department	349
Laws	337	Interior Department	350
Sheep-bound Reserve	337	Department of Agriculture	354
President of United States	338	Courts of United States	356
State Department	338	Smithsonian Institution	356
Treasury Department	341	Various Bureaus	357
War Department	345	Index	359
Navy Department	346		

Abbreviations Used in this Catalogue

Agricultural	agric.	Nautical	naut.
Amendments	amds.	Number, numbers	no., nos.
American	Amer.	Octavo	8°
Appendix	app.	Page, pages	p., pp.
Association	assoc.	Part, parts	pt., pts.
Commission	comm.	Plate, plates	pl.
Committee	com.	Portrait, portraits	por.
Congress	Cong.	Quarto	4°
Consular	cons.	Railway	ry.
Department	dept.	Report	rp.
Document	doc.	Resolution	res.
Executive	ex.	Secretary	secy.
Exposition	expos.	Section, sections	sec.
Facsimile, facsimiles	facsim.	Senate bill	S.
Folio	f°	Senate concurrent resolution	S. C. R.
General	gen.	Senate document	S. doc.
Geologic	geol.	Senate joint resolution	S. J. R.
Government	Govt.	Senate report	S. rp.
House bill	H.	Senate resolution (simple)	S. R.
House concurrent resolution	H. C. R.	Session	sess.
House document	H. doc.	Sixteenmo	16°
House joint resolution	H. J. R.	Society	soc.
House report	H. rp.	Superintendent	supt.
House resolution (simple)	H. R.	Table, tables	tab.
Illustrated, illustration, illustrations	il.	Thirtytwo-mo	32°
Inch, inches	in.	Treasury	Treas.
Latitude	lat.	Twelvemo	12°
Leaf, leaves	l.	Twentyfour-mo	24°
Longitude	long.	Versus	vs., v.
Mile, miles	m.	Volume, volumes	v.
Miscellaneous	mis.	Year	yr.

NOTE.—Documents for sale by this office will be indicated by a star (*) preceding the price named. Words and figures inclosed in brackets [] are given for information, but do not appear on the title-pages of the publications catalogued. When size is not given, octavo is to be understood. Size of maps is measured from outer edge of border, excluding margin. The dates, including day, month, and year, given with Senate and House documents and reports are the dates on which they were ordered to be printed. Usually the printing promptly follows the ordering, but various causes sometimes make delays. When Congress and session are not given with the numbers of Senate and House documents and reports, 55th Congress, 3d session, is to be understood.

General Information

With Reference to the Distribution of Documents

CATALOGUE DISTRIBUTION

Hereafter the monthly catalogue published by this office will be sent to Congress, heads of Departments, bureaus, institutions, school, public, and college libraries only; but the names of individuals now on the list will be continued until it is necessary to drop them.

This announcement is made necessary because of the impossibility of supplying the catalogue regularly to any considerable number of persons, on account of the small edition which Congress has authorized to be printed.

Price-lists of Government publications available for sale by this office will be published from time to time for general distribution to all who may apply.

NO FREE DISTRIBUTION TO INDIVIDUALS

The Superintendent of Documents is not authorized to supply documents free to individuals, except publications specifically authorized by Congress to be distributed to persons designated by Senators, Representatives, or Delegates. The only documents of that character now being distributed are the compilation entitled "Messages and Papers of the Presidents, 1787 to 1897," by Richardson, and the Official Register, or "Blue Book."

FREE TO LIBRARIES

He is authorized to distribute to three classes of libraries, to be designated to him by Senators, Representatives, and Delegates in Congress.

SALES

The Superintendent of Documents is authorized to sell at cost any public document in his charge the distribution of which is not otherwise provided for. Only one copy is permitted to be sold to the same person, excepting libraries or schools and Members of Congress.

PRICES

Documents for sale by this office will be indicated by a (*) preceding the price named. The absence of a (*) indicates that application should be made to the Department, bureau, or division issuing the document.

HOW TO REMIT

Remittances may be made to the Superintendent of Documents by postal money order, express money order, draft, or check. In case of remittance by check the documents ordered will not be sent until after the check has been collected. Any charge for collection will be deducted from the face of the check and documents sent for the remainder. *Stamps or foreign currency will not be accepted in any case.*

Remittances to the Public Printer should be made by postal money order, express money order, or draft on New York. Remittances to the Geological Survey should be made by money order. The War Records Office will receive currency as well as postal money orders if the exact amount be sent.

The Hydrographic Office sells for 50c its "Catalogue of Charts, Plans, Sailing Directions, and other Publications." Other Government offices which have books, pamphlets, maps, or charts for sale issue price-lists, which will be sent free to all applicants. The prices charged are never more than cost and 10 per cent added, and frequently much less than that.

All public documents, from whatever Department or bureau they may be bought or procured, will be forwarded free of postage to all points in the United States, Canada, and Mexico. To other countries regular rates of postage are charged, and remittances must be made to include such postage.

WHERE DOCUMENTS MAY BE OBTAINED

General directions as to where documents may be procured are given in the body of the catalogue.

LAWS OF THE UNITED STATES

By act of Congress the sale of the Revised Statutes, Statutes at Large, and pamphlet laws has been transferred from the State Department to the Superintendent of Documents. The following are the prices at which the Statutes at Large and the pamphlet laws of the 55th Congress are sold. Prices will be furnished on application for Revised Statutes, Statutes at Large, and pamphlet laws prior to the 55th Congress:

Laws of 1st session, 55th Congress, 1897, pamphlet35
Laws of 2d session, 55th Congress, 1897-98, pamphlet95
Laws of 3d session, 55th Congress, 1898-99, pamphlet	1.00
Statutes at Large, v. 30, 55th Congress, 1897-99, bound.....	3.00

Catalogue of Public Documents

Printed During the Month of July, 1899

Congress of United States

Abridgment; message from President to Congress at beginning of 3d session of 55th Congress, with reports of heads of Departments [1898] and selections from accompanying documents; edited by clerk of Joint Committee on Printing. 1899. v. 4, 740 pp. il. 55 pl. 6 maps. *\$1.40

NOTE.—Volume 4 contains the appendix to the report of the chief of the Navigation Bureau, Navy Department, which consists of reports and papers relating to the naval operations of the war with Spain.

Congressional Record, proceedings and debates of 55th Congress, 3d session, v. 32 [pt. 3; Feb. 21-Mar. 3, 1899, with appendix]. [3] + 2145-2938 + 282 pp. il. 4°

Same, index to pts. 1-3, including history of bills and joint resolutions. 262 + 97 pp. 4°

NOTE.—In this permanent bound edition the paging varies from that of the daily numbers, as the text is printed continuously without break. The bound volumes of the record are sold by the Public Printer and the Superintendent of Documents, the price averaging about \$1.40 per part. *The set containing the proceedings of the 3d session of the 55th Congress is in 4 parts and costs \$5.75.*

Memorial addresses on William F. Love. 1899. 54 pp. 1 por. large 8° (H. doc. 273.) *35c

Memorial addresses on Justin S. Morrill. 1899. 119 pp. 1 por. large 8° (S. doc. 170.) *40c

Memorial addresses on Stephen A. Northway. 1899. 75 pp. 1 por. large 8° (H. doc. 274.) *35c

LAWS

Statutes at Large, Mar. 1897-Mar. 1899, and recent treaties, conventions, executive proclamations, and concurrent resolutions; edited under direction of Secretary of State. 1899. v. 30, xliii + 2026 pp. Sheep, \$3.00

NOTE.—The contents of this volume are the same as those of the Pamphlet or Session Laws for the three sessions of the 55th Congress, but with a different arrangement. The laws, whether acts or joint resolutions, have been noted in this catalogue each month as separately published. See catalogues, Mar.-July, 1897, Dec. 1897-July, 1898, and Dec. 1898-Mar. 1899. For lists of the treaties, conventions, proclamations, and concurrent resolutions, see the entries for the Session Laws ("Statutes Passed") in catalogues for Sept. 1897, p. 9, Aug. 1898, p. 495, 496, and May, 1899, p. 269, 270.

SHEEP-BOUND RESERVE

NOTE.—These volumes, which have been previously published in unbound form or in one or more cloth editions, are now for the first time ready for distribution in sheep binding. The number in black-faced type appended to the description of each volume is the serial number in the set of Congressional documents, as adopted in the Checklist of Public Documents issued by this office.

52d Congress, 1st session. House miscellaneous documents, v. 50, pt. 19. No. 340, pt. 29; 11th census of United States, 1890, statistical atlas. [3037]

- 52d Congress, 2d session. House executive documents, v. 4-6. No. 1, pt. 2, v. 2, pts. 2-4; Report of Secretary of War, 1892, v. 2, pts. 2-4; Engineers, pts. 2-4. [3079-3081]
- 53d Congress, 2d session. House miscellaneous documents, v. 39, pt. 3. No. 212, pt. 3; History and digest of international arbitrations, v. 3. [3267, v. 3.]
- 54th Congress, 1st session. House documents, v. 9. No. 2, v. 2, pt. 6; Report of Secretary of War, 1895, v. 2, pt. 6; Engineers, pt. 6. [3376]
- 54th Congress, 2d session. Senate documents, v. 7. No. 16, 2 pts.; Congressional Directory. [3473]
- House documents, v. 23. Nos. 9, 2 pts., 11; Report of Attorney General, 1896; Internal revenue report, 1896. [3499]
- Same, v. 52. No. 202; Civil service tables. [3528]
- Same, v. 71. No. 348; Fish Commission bulletin, v. 16. [3547]
- 55th Congress, 2d session. House documents, v. 53. No. 259; Statistical Abstract, 1897. [3681]

President of United States

Compilation of messages and papers of Presidents, 1789-1897; by James D. Richardson. 1899 [copyright 1897]. v. 10, viii + 677 pp. 1 por. 2 pl. (H. mis. doc. 210, pt. 10, 53d Cong. 2d sess.)

Contents:

- Index to v. 1-10.
 McKimley, William. Biographical sketch.
 — Messages, etc., relating to Spanish-American War.
 Messages, etc., omitted from v. 1-9.

State Department

NOTE.—The State Department distributes the Consular Reports and other departmental publications gratuitously. For sale of laws see page 336.

Diplomatic list, July, 1899. 12 pp. 24° [Monthly.]

AMERICAN REPUBLICS BUREAU

NOTE.—This Bureau sells its own monthly bulletins, handbooks, etc., at prices usually ranging from 5c to 60c. Address the Director of the Bureau.

Monthly bulletin, July, 1899; whole no. 70, v. 7, no. 1. p. 1-128. [Contains articles in English, Spanish, Portuguese, and French.]
 25c single copy, \$2.00 a yr

Contents:

- Argentina. Trade returns, agricultural products, 1st quarter, 1899; new governmental bureau; deposits of borax, borate of soda, and borate of lime; notes.
 Book notices.
 Brazil. National industries in Rio Grande do Sul; trade in leather; French consul's estimate of coffee crop; electrical progress of Republic; scarcity in ipecacuanha market; notes.
 Chile. Coal for Government railroads; decrease in import trade at Valparaiso; review of financial situation; report of Antofagasta and Bolivia Railway; demand for copper properties.
 Colombia. Notes.
 Cuba. Notes.
 Dutch West Indies. Colony of Curaçao.
 Ecuador. Custom-house returns of shoe imports; resources of country; notes.
 Guatemala. Notes.
 Haiti. Opportunities for United States business men; undeveloped resources of country.
 Honduras. New line of banana steamers.

Monthly bulletin—Continued.

Contents—Continued.

- Mexico. Industrial progress of Republic; conversion of public debt; active demand for manufactured goods; new cotton mill at Orizaba; pulque as antiscorbutic; notes.
- Nicaragua. Control of banana trade.
- Peru. Permanent exposition at Lima; most recent tariff changes; supplementary decree to civil-marriage law; imports and exports in 1898; notes.
- Rockhill, W. W., appointment of, as permanent director.
- Salvador. Export of silver, decree.
- United States. Trade with Latin America: tariff circulars with reference to Cuba; statistics of silk industry; reciprocity treaty with Barbados; receipts and expenditures in 1899; production of gold; notes.
- Uruguay. Semiannual report of principal railway system; proposed harbor improvements at Montevideo; heating and cooking stoves; notes.
- Venezuela. Imports from New York in May, 1899; exports from Puerto Cabello; notes.
- Same, index to v. 5 [pt. 1], July–Dec., 1897 [with index to pt. 2, Jan.–June, 1898]. [1899.] v + [ii] + viii pp:
- Venezuela [with bibliography]. Revised edition. 1899. 2 pts. ii + ii + 278 pp. (Bulletin 93.) [Part 1 English; part 2 Spanish.]
Each pt. 25c
- Same. ii + 278 pp. (Bulletin 93; S. doc. 178, pt. 18, 55th Cong. 2d sess.)

FOREIGN COMMERCE BUREAU

Advance sheets of consular reports, July 1–31, 1899; nos. 466–490. [Daily except Sundays and holidays.]

Contents:

- Agricultural machines and tools, German tariff on, by F. H. Mason; no. 476.
- Agriculture in Mexico, by J. K. Pollard; no. 479.
- Amazon Valley, Resources and trade opportunities of, by K. K. Kenneday; no. 483.
- Argentina, Judicial reforms in, by Daniel Mayer; no. 489.
- Argentine Republic, Trade in, imports from United States, by W. I. Buchanan; no. 472.
- Argentine tariff, Proposed, by W. I. Buchanan; no. 487.
- Art, Persian, Sale of specimens of, note; no. 474.
- Art exhibition in Antwerp, note; no. 473.
- Asiatic Turkey, Trade suggestions for, extract from British consular report; no. 482.
- Athens, Merchants in, by D. E. McGinley; no. 476.
- Australia, Federal movement in, by G. W. Bell; no. 474.
- Azores, New mail service with, note; no. 478.
- Barber chairs, American, in Germany, by E. L. Harris; no. 470.
- Brazil, Foreign judgments in, by F. D. Hill; no. 489.
- Brazilian trade, United States-, by F. D. Hill; no. 473.
- Brick factory in [Monterey] Mex., by J. K. Pollard; no. 479.
- British colonies, Prosperity of, from London Times; no. 478.
- British Columbia, Assay offices in, note; no. 481.
- Canadian canal problem, by H. W. Brush; no. 470.
- Caracas, Proposed American bank in, note; no. 479.
- China, United States trade in, by John Fowler; no. 468.
- Coffee in Jamaica, transmitted by L. A. Dent; no. 469.
- Coffee market, Plan for controlling, by F. B. Loomis; no. 470.
- Cotton-spinning machinery in Japan, by S. S. Lyon; no. 489.
- Cotton trade, Reforms in, by James Boyle; no. 484.
- Dawson City, Notes from, by J. C. McCook; no. 486.
- Dominican duties payable in gold, note; no. 479.
- Druggists' scales, Duty on, in Germany and France, by F. H. Mason and J. K. Gowdy; no. 485.
- Dutch East Indies, Mining law of, note; no. 476.
- Ecuador, Resources of, by P. M. De Leon; no. 466.
- Electric industry in Japan, from Japan Times; no. 477.
- Electricity in Ecuador, note; no. 488.
- Flour, Spanish tariff on, note; no. 482.
- Formosa, Proposed railway construction in, by J. W. Davidson; no. 485.
- France, Colonial office in, note; no. 477.
- Inherited property in, by J. C. Covert; no. 485.
- Fruit, American, in Netherlands, by Soren Listoe; no. 479.
- in Norway, by Henry Bordewich; no. 469.
- Dried, in Germany, note; no. 482.
- Fuel, New, in Belgium, note; no. 474.
- Furniture in Germany, note; no. 478.
- German-American balance of trade, translation of official memorandum; no. 466.
- Germany, Mechanical power in, note; no. 467.

Advance sheets of consular reports—Continued.

Contents—Continued.

- Germany, Suggestions for exporters to, by W. S. Hanauer; no. 478.
 Guadeloupe, Exchange at, note; no. 487.
 Hawaiian representation at Omaha Exposition, note; no. 466.
 Hogs, Russian, in Germany, note; no. 466.
 India-rubber trade, by F. D. Hill; no. 482.
 Leather industry in Russia, note; no. 477.
 Locomotives in Germany, by J. C. Monaghan; no. 473.
 Machine trade in Ecuador, by P. M. De Leon; no. 488.
 Madagascar, Municipal taxes in, note; no. 476.
 Manganese ore in Japan, note; no. 471.
 Mannheim, Trade and industries of, by P. J. Osterhaus; no. 488.
 Match monopoly in Colombia, note; no. 482.
 Mauritius, United States trade with, note; no. 479.
 Mexican debt, Conversion of, note; no. 469.
 Mexico, New railroad law of, by Powell Clayton; no. 487.
 — Railway concession in, note; no. 481.
 Mining in Szechuan, regulations, transmitted by E. H. Conger; no. 471.
 Montevideo, Port works at; no. 470.
 Naphtha industry, History of, in Russia, by Thomas Smith; no. 490.
 Norway, Railway management in, note; no. 485.
 Oil, Russian, in Azores, note; no. 478.
 Paraguay, Imports of, by J. N. Ruffin; no. 481.
 Patent medicines in Portugal, regulations, transmitted by Lawrence Townsend; no. 476.
 Pearl fishing in Venezuela, note; no. 467.
 Petroleum in Borneo, by S. E. Everett; no. 474.
 Philippine situation, French view of, translated by J. C. Covert; no. 470.
 Platinum, iridium, and osmium in foreign countries, by several consuls; no. 486.
 Plumbago in Japan and China, by J. F. Gowey and John Goodnow; no. 487.
 Puerto Cabello, Harbor regulations of, transmitted by W. H. Volkmar; no. 490.
 Railroad ties forgotten in Brazil, note; no. 483.
 Rails, Bids for, in Brazil, translated by C. P. Bryan; no. 485.
 Reindeer, Breeding of, in Norway, note; no. 466.
 Russia, Crops in, by T. E. Heenan; no. 478.
 — Legal status of foreign corporations in, by Joseph Pergamaint; no. 475.
 — Trade openings in, by S. W. Hanauer; no. 490.
 Seal fisheries of Japan, note; no. 467.
 Shanghai, Passenger transit in, by John Goodnow; no. 488.
 Siberia, Emigration to, note; no. 481.
 Siberia no longer a penal colony, note; no. 484.
 Silesia, Public ways and parks in, by C. W. Erdman; no. 479.
 Slate trade in Rheims, note; no. 466.
 Soap and perfumery, German exports of, by Louis Stern; no. 477.
 South African Republic, Importers in, by C. E. Macruch; no. 484.
 South America, Emigration to, by Warren Lowe; no. 467.
 — How to extend our trade in, by F. D. Hill; no. 473.
 Stoves, Heating and cooking, in Uruguay, by A. W. Swalm; no. 469.
 Sugar in Paraguay, by William Harrison; no. 484.
 — in Spain, note; no. 469.
 Sugar industry in Trinidad, from Port of Spain Gazette; no. 490.
 Syria, Direct steamship connection with, note; no. 469.
 Tariff of Jamaica, effect upon trade, by L. A. Dent; no. 480.
 Tea exports, Japanese, 1898-99, note; no. 477.
 Tool-machine trust, German, by S. W. Hanauer; no. 487.
 Tramways in Milan, by William Jarvis; no. 472.
 Transvaal, Railway construction in, from Government Gazette; no. 486.
 Turkey, Invoices for, note; no. 470.
 Victoria, Harbor improvements at, extracts from Victoria Colonist; no. 476.
 Volga River, Navigation of, by Thomas Smith; no. 487.
 Water filters for China, note; no. 467.
 Wool, Silesian, by C. W. Erdman; no. 466.
 Wool import, Germany's, by Louis Stern; no. 486.
 Workmen, Accidents to, in France, by H. S. Brunot; no. 467.

Consular Reports, July, 1899; v. 60, no. 226. xvi + 401-592 pp. 2 il. (H. doc. 294, pt. 3.) [Monthly.] *15c

Contents:

- Aden, Trade in; by E. S. Cunningham.
 Africa, west, United States trade in; by J. A. L. Trice.
 Australasia, Trade conditions in; by J. P. Eray.
 Austria, Export conditions in, by F. W. Mahin.
 Automobiles in Paris; by J. K. Gowdy.
 Axes and dolls in Paraguay; by J. N. Ruffin.
 Beet-sugar industry, Germany's, 1877-99, by H. W. Diederich.
 British Columbia, Mining laws of.
 Car couplers, Automatic, in Europe; by W. K. Anderson.
 Cheese and candles, Exports of, to Philippines and West Indies; by Soren Listoe.
 Chungking, Trade of, in 1898; by G. F. Smithers.

Consular Reports—Continued.

Contents—Continued.

- Copper, Sulphate of, in France; by J. C. Covert.
 Copyright law, New, of Japan; from Japan Gazette.
 Cotton goods in Colombia; by W. I. Shaw.
 Cuba, Puerto Rico, and Philippines, Manchester exports to; by W. F. Grinnell.
 Diamond and gold mining in Minas Geraes; by T. C. Dawson.
 Electric-railway construction in Germany; by G. P. Pettit.
 Export academy, Vienna; by C. B. Hurst.
 Fair of Nizhni Novgorod; by Thomas Smith.
 Fig cultivation in Greece; by D. E. McGinley.
 Foreign reports and publications.
 France, Economic conditions in; translated by J. C. Covert.
 Germany, west, Labor in; by J. A. Barnes.
 Germany's merchant marine; by J. C. Monaghan.
 Gibraltar, Trade in; by H. J. Sprague.
 Great Britain, Labor conditions in; by Marshal Halstead.
 Indigo, Natural vs. artificial, in the East; by S. B. Everett.
 Jamaica, Railways in; by L. A. Dent.
 Japanese laws relating to foreigners.
 Korea, Trade of, in 1898; by H. N. Allen.
 Kyao-chau harbor regulations; from Official Gazette.
 Lourenço Marquez, Tonnage dues at, decree.
 Norfolk Island, Economic conditions in; by Isaac Robinson.
 Notes.
 Oil syndicate, Anglo-Russian, in Java; by S. B. Everett.
 Orange growing in Jamaica; by L. A. Dent.
 Paraguay, Colonization in; by J. N. Ruffin.
 Pastes, alimentary, Wheat for, in France; by J. C. Covert.
 Patents and trade-marks registered in Japan; by J. F. Gowey.
 Phosphorus, Use of, in matches; from London Times.
 Pig iron and copper in the Urals; from Commercial Gazette.
 Railroad business in Russia in 1898; by W. R. Holloway.
 Scotland, Trade suggestions for; by Rufus Fleming.
 Shipbuilding in Germany; by W. K. Anderson.
 Siberian Railway, Heavier rails for; by Marshal Halstead.
 — Traffic on; by W. R. Holloway.
 Slate in Belgium; by Richard Le Bert.
 Slate industry in France; by J. K. Gowdy.
 Slaughterhouses in Paris; by J. K. Gowdy.
 Smoke consumption and economy of fuel; by F. H. Mason.
 Sulphur ore, Reduction of, in Sicily; by Alex. Heingartner and Church Howe.
 Switzerland, Germany's trade with; by J. C. Monaghan.
 Syria-Ottoman Railway; by G. B. Ravndal.
 Taxes in Madagascar; translation of decree.
 Trade-mark law, New, of Japan; from Japan Gazette.
 Transvaal, Consumption of goods in; by C. E. Macrum.
 Tropical diseases, Study of, in Great Britain; by James Boyle.
 Uruguay, Trade and agriculture of, in 1898; by A. W. Swalm.
 Vladivostock, Trade of; by R. T. Greener.
 Wheat, American, at Malta; by J. H. Grout, jr.
 Wood seasoning by electricity; by E. T. Liefeld.
 Yangtze Kiang, Trade and customs regulations on.

Treasury Department

- Debt. Statement of public debt and cash in Treasury, July, 1899. 1 p.
 f° [Monthly.]
- Health. Ports at which bills of health must be obtained. July 15,
 1899. 1 p. 4° (Dept. circular 95, 1899; Bureau of Navigation.)
- Invoices. Copies of invoices, etc., by hektograph or other similar
 method, modifying Department circular 66 of 1899. July 6, 1899.
 1 p. 4° (Dept. circular 92, 1899; Division of Stationery, Printing,
 and Blanks.)
- Quarantine. Amendments to quarantine regulations, domestic ports.
 July 18, 1899. 1 p. 4° (Dept. circular 97, 1899; Marine-Hospital
 Service.)
- Reports. Preparation and printing of annual and other reports. July
 28, 1899. 2 pp. 4° (Dept. circular 100, 1899; Division of Station-
 ery, Printing, and Blanks.)

- Tea. Receptacles for tea samples. July 29, 1899. 1 p. 4° (Dept. circular 101, 1899; Division of Customs.)
- Traveling expenses. Oaths, traveling expense accounts. July 14, 1899. 1 p. 4° (Dept. circular 94, 1899; Division of Appointments.)
- Treasury decisions under tariff, internal revenue, immigration, navigation laws, etc., weekly, v. 2 [of 1899], nos. 1-4; July 6-27, 1899. 1-145 + [xiv] pp. [Department decisions numbered 21331-431, including general appraisers' decisions 4470-4505 and reappraisements of merchandise.]
- Same, index to v. 1 [of 1899], Jan. 1-June 30, 1899. lxxxv pp.
- NOTE.—The title "Synopsis of Decisions," which has heretofore appeared on bound volumes of Treasury Decisions, will be discontinued with the 1898 series. The title for the volume containing the decisions rendered during the first six months of the calendar year 1899 will be "Treasury Decisions," v. 1, and future volumes will be numbered consecutively as issued.
- Vessels. Certificates of inspection of sail vessels and licensed officers thereof. July 17, 1899. 1 p. 4° (Dept. circular 96, 1899; Steamboat-Inspection Service.)
- Rules and regulations fixing salaries of inspectors of steam vessels under act approved Mar. 1, 1895, concerning regulation of steam vessels. July 24, 1899. 1 p. 4° (Dept. circular 98, 1899; Division of Appointments.)

BOOKKEEPING AND WARRANTS DIVISION

- Comparative statement of receipts and expenditures of United States [for month of July, 1898 and 1899]. 1 p. oblong 8° [Monthly.]
- Statement of condition of Treasury and receipts and expenditures of Government, July 1-31, 1899. Each 1 p. narrow f° [Daily except Sundays and holidays.]

COAST AND GEODETIC SURVEY

NOTE.—The Charts, Coast Pilots, and Tide Tables of the Coast and Geodetic Survey are sold at the office of the Survey, in Washington, and also by one or more sales agents in each of the important American seaports. The monthly Notice to Mariners may be had free at these agencies, at all United States custom-houses, at the branch hydrographic offices of the Navy Department, at United States consulates in foreign ports, and at the office of the Coast Survey.

- Bulletins, v. 2 [title-page and contents]. 1899. 3 pp.
- Notice to Mariners 246; June, 1899. 14 + [2] pp. 4° [Monthly.]

NOTE.—Contains corrections for charts of the Coast and Geodetic Survey, with lists of new charts, canceled editions, etc.

Charts

- Alaska; chart T. Scale 1:3,600,000. July, 1899, first published 1890. 27.4 × 46.2 in. 50c
- Alaska, Dixon Entrance to head of Lynn Canal; chart 8050. Scale 1:600,000. June, 1899, first published 1895. 37.7 × 27 in. 50c
- [Atlantic coast] Wells [Me.] to Cape Ann; chart 108. Scale 1:80,000. June, 1899, first published 1867. 37.9 × 30.2 in. 50c
- Delaware River, Penn's Neck to Philadelphia; with inset, Bridesburg to Trenton, from surveys by engineers, U. S. A., 1885 and 1886; chart 126. Scale 1:80,000. May, 1899, first published 1849. 29.3 × 29.6 and 13.1 × 17.4 in. 50c
- Eel River, Entrance to, Cal.; chart 5819. Scale 1:20,000. June, 1899, first published 1888. 20.8 × 17.7 in. 25c
- Glacier Bay, Alaska; chart 3095. Scale 1:200,000. July, 1899. 20.4 × 17.5 in. 25c
- Long Island Sound, New Rochelle to Throgs Neck, N. Y.; chart 272. Scale 1:10,000. May, 1899, first published 1895. 34 × 42.5 in. 50c

- Penobscot Bay, Me.; chart 104. Scale 1:80,000. July, 1899, first published 1880. 37.9 × 29.7 in. 50c
- Penobscot River and Belfast Bay, Me.; with inset, Continuation to Bangor; chart 311. Scale 1:40,000. July, 1899, first published 1882. 40.2 × 25.5 and 13.6 × 10.8 in. 25c
- Protection, Port, Prince of Wales Island, Alaska; chart 8174. Scale 1:20,000. July, 1899, first published 1888. 27.2 × 18.1 in. 15c
- Red Bay, Prince of Wales Island, Alaska; chart 8168. Scale 1:20,000. June, 1899, first published 1888. 20.2 × 13.1 in. 15c

COMPTROLLER OF CURRENCY

Bulletin 324-328; July 3-31, 1899. 4° [Weekly.]

NOTE.—Announces changes in officers of national banks, organization of new banks, liquidations, etc.

COMPTROLLER OF TREASURY

Computation of navy pay after June 30, 1899. July 1, 1899. 1 p. 4° (Dept. circular 91, 1899.)

INTERNAL REVENUE OFFICE

- Abstract of internal-revenue laws in force May 1, 1899. 105 pp. (Treas. Dept. doc. 2110.)
- Gross receipts [petroleum refineries, sugar refineries, and pipe lines] taxable under sec. 27, act of June 13, 1898. July 7, 1899. 3 pp. 4° ([Circular] 540; Dept. circular 93, 1899.)
- Imprinted stamps, list of contractors authorized to imprint stamps, also list of stamp agents, with instructions as to procurement of said stamps. July 12, 1899. 2 pp. 4° (Circular 541.)
- Relative to revision of civil service rules promulgated May 29, 1899. July 17, 1899. 3 pp. 4° (Circular 538 revised.)

LIFE-SAVING SERVICE

Official register, July 1, 1899. 24 pp. (Treas. Dept. doc. 2122.) [Includes list of life-saving districts and stations.]

LIGHT-HOUSE BOARD

- Bulletin 98, recent changes in aids to navigation, July 1, 1899, coasts of United States. 18 + [2] pp. 4° [Monthly.]
- 3d District. List of beacons, buoys, and day marks, from Elisha Ledge, off Warren Point, R. I., to opposite Shrewsbury Rocks, N. J., and includes Lake Champlain and Lake Memphremagog; corrected to July 1, 1899. 145 + vii pp. large 8°
- List of lights and fog signals on Atlantic and Gulf coasts of United States; corrected to June 30, 1899. 179 + vi pp. 31 pl. map, large 8°
- Notice to Mariners 122-146 of 1899; July 3-27, 1899. p. 122-146, 4°
- NOTE.—Contains notices of establishment of new lights, light-vessels, and steam whistles, changes in buoyage, etc.
- Officers on duty under Light-House Establishment. July 5, 1899. 2 pp. 4° (Circular 5 of 1899.)

LOANS AND CURRENCY DIVISION

Registered bonds caveated upon books of Department, July 1, 1899. 1 p. f° [Monthly.]

Statement showing amounts of gold and silver coins and certificates, United States notes, and national bank notes in circulation, July 1, 1899; changes in circulation, June, 1899; changes in money and bullion in Treasury, June, 1899. 1 p. f^o [Monthly.]

NOTE.—Estimated population, July 1, 1899, 76,148,000; circulation per capita, \$25.38.

MARINE HOSPITAL SERVICE

Centennial year, annual report of supervising surgeon-general, 1898. 1899. 855 pp. il. 5 pl. map. (Treas. Dept. doc. [2080, erroneously printed as no.] 1449.) [27th annual report, although the service was established in 1798.] *50c

NOTE.—Includes the following special chapters and contributed articles:

Amaurosis, Toxic, recovery; by J. B. Greene.

Anthrax oedema; by W. P. McIntosh.

[Bubonic] plague.

Bullet, Location of, by X ray, rupture of traumatic aneurism, establishment of collateral circulation after double ligation of main artery of limb, ultimate result in doubt; by R. M. Woodward.

Cholera.

Consumptive sailor, Observations, comments, and statistics on diagnosis, climatic isolation, and future control of; by J. O. Cobb.

Femoral hernia, Bassini's operation, recovery; by J. B. Stoner.

Health authorities, State and local, Relations with.

Hernia, Radical cure of, with report of cases; by J. B. Eagleson.

Herniotomies; by H. S. Mathewson.

Hospital practice, Cases from, Marine Hospital, Memphis, Tenn.; by G. B. Young.

Hygienic Laboratory, report; by J. J. Kinyoun.

Leprosy.

Metatarsophalangeal junction, Severe lacerated wound of foot involving, and muscles nearly to plantar surface; by J. H. Oakley.

Operating room, Portable; by L. E. Cofer.

Pasteur Institute at Rio, Statistics of, and report on Vaccination Institute in that city for 1897; by W. Havelburg.

Public health service.

Quarantine administration, National, domestic.

— foreign.

Quarantine stations, national, Reports from.

Raynaud's disease, Report of case of; by P. C. Kalloch.

Sanitary Reports and Statistics, Division of.

Smallpox.

Statistics of Marine-Hospital Service.

Tuberculosis in Rio, Reports on, and on etiology of beriberi; by W. Havelburg.

Yellow fever.

— its nature, diagnosis, treatment, and prophylaxis, and quarantine regulations relating thereto; a series of articles by officers of Marine-Hospital Service.

Public Health Reports, v. 14, nos. 27-30; July 7-28, 1899. p. 1037-1207. [Weekly.]

NOTE.—This publication, showing health conditions in various parts of this and other countries, as reported by the officers of the Marine Hospital Service and others, is for gratuitous distribution, but the edition is limited, and the document is intended only for health officers and other persons interested in sanitary affairs. To obtain it application should be made to the Supervising Surgeon-General of the Marine Hospital Service, Treasury Department.

MINT BUREAU

Values of foreign coins. July 1, 1899. [3] pp. 4^o. (Dept. circular 90, 1899.) [Quarterly.]

NAVIGATION BUREAU

Laws relating to navigation and merchant marine, part 2 of report of commissioner, 1899. 510 pp. *50c

STATISTICS BUREAU

Advance sheets from Monthly Summary of Commerce and Finance, showing details of imports and exports by articles and countries for June, 1899. 64 pp. 4^o

- Commerce of British West Indies and other British possessions in America south of United States; from Summary of Commerce and Finance, May, 1899. iii + 2761-2801 pp. map, 4°
- Exports of domestic breadstuffs, provisions, cotton, and mineral oils, June, 1899. 13 pp. 4° (Bulletin 12, series 1898-99.) [Monthly.]
- Exports of products of domestic manufacture from United States, 1889-98; from Summary of Commerce and Finance, May, 1899. iv + 2805-3001 pp. 4°
- Imports and exports of United States, June, 1899. 1 p. 4° [Monthly.]
- Monthly Summary of Commerce and Finance of United States, May, corrected to June 28, 1899; no. 11, series 1898-99. p. 2601-3001, map, 4° (H. doc. 573, pt. 11, 55th Cong. 2d sess.)
- * 20c single copy, \$2.40 a yr

TREASURER OF UNITED STATES

- Monthly statement, paper currency of each denomination outstanding July 31, 1899. 1 p. oblong 24°

War Department

- Tariff circular 81-83; July 8-12, 1899. 12° [Amendments to tariff regulations for Cuba, Porto Rico, and Philippine Islands.]

ADJUTANT-GENERAL

- Army list, officers of Army, July 15, 1899; [no.] 4. 27 pp. *10c
- Ballistics, by James M. Ingalls; prepared for publication by Tasker H. Bliss. 1893 [reprint 1899]. 132 pp. 1 il. 4° (Artillery circular F, [series begun in] 1893.) *20c
- Circular 33-35 [1899]; July 8-24, 1899. Each 1 p. 12°
- Enlistments for line of Army, June, 1899. 8 pp. 12° [Monthly.]
- General orders 120-138 [1899]; July 1-27, 1899. 12° [Corrected 2d print of no. 123 was issued.]
- Special orders 153-177 [1899]; July 1-31, 1899. 12° [Daily except Sundays and holidays.]

MILITARY ACADEMY

- Official register of officers and cadets. U. S. M. A. press and bindery, June, 1899. 39 pp. 12°

CUSTOMS AND INSULAR AFFAIRS DIVISION

- Circular 14 revised, 26, 27; Apr. 29, July 19, 27, 1899. 12°
- Immigration regulations for Cuba. June 7, 1899 [reprint]. 9 pp.
- Immigration regulations for Philippine Islands. June 7, 1899 [reprint]. 9 pp.
- Immigration regulations for Porto Rico. June 7, 1899 [reprint]. 9 pp.
- Translation of law of railroads for Cuba and regulations for its execution, with additions to 1895. July, 1899. 58 pp.

ENGINEER DEPARTMENT

- Circular 13, 14 [1899]; July 8, 28, 1899. Each 1 p. 12°
- General orders 7, 8 [1899]; July 6, 13, 1899. 12°
- Special orders 35-40 [1899]; July 6-28, 1899. Each 1 p. 12°

PAY DEPARTMENT

- Circular 189-194; July 1-25, 1899. 12°
 Distance circular 4; July 15, 1899. 9 pp.
 Monthly station list of officers, July 1, 1899. 3 pp.
 Stoppage circular, July 15, 1899. 18 pp. 12° [Monthly.]

QUARTERMASTER'S DEPARTMENT

- Specifications for abdominal bands [etc.], 469, 470; June 28, July 13, 1899. Each 1 p.

WAR RECORDS OFFICE

- War of the Rebellion, compilation of official records of Union and Confederate armies. 1899. Series 2, v. 5 [serial no. 118]; viii + 1026 pp. il. (H. doc. 311.) 65c

Contents:

Correspondence, orders, etc., relating to prisoners of war and state, Dec. 1, 1862-June 10, 1863.

NOTE.—The War Records Office was merged into the Record and Pension Office, July 1, 1899. The volumes of the Records of the War of the Rebellion are sold at 35c to 90c per part. The atlas is furnished unbound for \$14.50, and the plates composing it are sold separately at 10c each. Address Brig. Gen. F. C. Ainsworth, Record and Pension Office, War Department.

Navy Department

- Circular 96; July 11, 1899. 2 pp. 12°
 Circular defining chief characteristics of 6 sheathed and coppered cruisers authorized by act making appropriations for naval service, 1900. [July 22, 1899.] 8 pp.
 General court-martial order 56-66 [1899]; June 28-July 22, 1899. 12°
 General order 519-523; June 14-July 24, 1899. 12°
 Navy yard order 33 revised, 112, 113, employment of labor at navy yards; July 6, 3, 11, 1899. Each 1 p. narrow 12°
 Special circular 49, 50; July 6, 24, 1899. Each 1 p. 12°
 Special order 84-86; July 24, 1, 29, 1899. 12°

EQUIPMENT BUREAU

- Classified list of books issued to ship's and crew's libraries since Feb. 1897. June 1, 1899. 60 pp. [Interleaved.]
 Specifications for equipment of protected cruisers nos. 14-19. July, 1899. 91. 12°

HYDROGRAPHIC OFFICE

NOTE.—The Charts, Sailing Directions, etc., of the Hydrographic Office are sold by the office in Washington and also by agents at the principal American and foreign seaports and American lake ports. Copies of the Hydrographic Bulletin and Notices to Mariners are supplied free on application at the Hydrographic Office in Washington and at the branch offices in Boston, New York, Philadelphia, Baltimore, Norfolk, Savannah, New Orleans, San Francisco, Portland (Oreg.), Port Townsend, Chicago, Cleveland, Buffalo, Sault Ste. Marie, and Duluth. The same offices also supply the Light List and the Beacon and Buoy List issued by the Light-House Board.

- Catalogue of charts, plans, sailing directions, and other publications of office. 1899. 131 pp. 24 maps, 4°

- Hydrographic bulletin, weekly, 514-517; July 5-26, 1899. Each 1 p. f° and large 4°
- NOTE.—Contains accounts of obstructions and dangers along the coast and the principal ocean routes, etc.
- Newfoundland and coast of Labrador from Cape St. Lewis to Grand Point. 2d edition. 1899. vi+589 pp. map. ([Publication] 73.)
- Same, addenda. 1 p.
- Notice to Mariners, weekly, 26-30, 1899; July 1-29. 209-262 + [9] l.
- NOTE.—Contains information of newly discovered dangers to navigation and of establishment and changes of lights and other aids. For economy and convenience in distribution, the items in each number relating to different geographical sections are reprinted separately, as Notice to Mariners 26, sec. 1, etc.
- Supplement 2 [to] Gulf of Mexico and Caribbean Sea, Navigation of, v. 2, 3d edition, coast of mainland from Key West to Orinoco River, with adjacent islands, cays, and banks (publication 64, edition of 1896). 1899. 10 l. 10c

Charts

- Fitzhugh and Smith sounds, Approaches to, British Columbia, from British survey in 1870; with inset, Continuation of Smith Inlet; chart 1767. Scale naut. m.=1 in. July, 1899. 37.51 × 25.83 and 4.1 × 5.4 in. 60c
- Galápagos Islands, Pacific Ocean, Anchorages in; chart 1801. July, 1899. 24.6 × 42.9 in. 70c
- Black Beach Anchorage, Santa Maria [or] Charles I., from French survey in 1887. Scale naut. m.=5 in. 8.3 × 6.4 in.
- Conway Bay, Santa Cruz [or] Indefatigable I., from British survey in 1846. Scale naut. m.=1 in. 7.2 × 4.2 in.
- Freshwater Bay, S. Cristobal [or] Chatham I., from British survey in 1836. Scale naut. m.=1 in. 3.6 × 4.2 in.
- Gardner Bay, Española [or] Hood I., from British survey in 1835. Scale naut. m.=2 in. 9.1 × 5.9 in.
- Iguana Cove, Isabela [or] Albemarle I., from British survey in 1836. Scale 1000 yds.=2 in. 3.7 × 4.2 in.
- James Bay, S. Salvador [or] James I., from British survey in 1836. Scale naut. m.=1 in. 5.4 × 4.2 in.
- Post Office Bay, Santa Maria [or] Charles I., from British surveys in 1836 and 1846. Scale naut. m.=3 in. 7.2 × 14.2 in.
- S. Cristobal [or] Chatham I., Wreck Bay to Stephens Bay, from Italian surveys in 1882 and 1885. Scale naut. m.=0.8 in. 8.3 × 8.4 in.
- Sappho Cove, Stephens Bay, S. Cristobal [or] Chatham I., from British survey in 1883. Scale 1000 ft.=2 in. 8.3 × 7.8 in.
- Sulivan Bay, S. Salvador [or] James I., from British survey in 1836. Scale naut. m.=1 in. 5.4 × 4.2 in.
- Tagus Cove, Isabela [or] Albemarle I., from British survey in 1835. Scale naut. m.=4 in. 9.1 × 8.3 in.
- Terrapin Road, S. Cristobal [or] Chatham I., from British survey in 1836. Scale naut. m.=1 in. 3.6 × 4.2 in.
- Webb Cove, Isabela [or] Albemarle I., from British survey in 1886. Scale naut. m.=2 in. 3.7 × 4.2 in.
- Wreck Bay and approaches, San Cristobal [or] Chatham I., from British survey in 1849, with additions and corrections. Scale 1000 yds.=5 in. 24.6 × 20.3 in.
- India, British, Coast of, Bay of Bengal, Kalingapatam to Koronge Island; chart 1593. Scale 1° long.=4.5 in. July, 1899. 30.89 × 48.35 in. 80c
- Irish Channel, Southern part of, including South or St. George's Channel, with diagrams for ascertaining state of tidal currents in approaches to Liverpool and Belfast; chart 1804. Scale 1° long.=5.2 in. June, 1899. 30.5 × 56 in., in 3 sheets. \$1.00
- Louisburg Harbor, Cape Breton Island, Gulf of St. Lawrence, from British survey in 1896; chart 1694. Scale naut. m.=7.9 in. July, 1899. 26.16 × 39 in. 50c
- Naruto Passage, Inland Sea, Japan, from British survey in 1869; chart 1796. Scale naut. m.=1.95 in. July, 1899. 18.45 × 25.25 in. 30c

Pilot chart of north Atlantic Ocean, July, 1899; chart 1400. Scale 1^o long. = 0.27 in. 21 × 32 in. [Monthly.] 10c

NOTE.—Contains, in addition to sailing routes, etc., tropical cyclonic storms; charts published, etc., May 31–June 30, 1899; equator crossings in Pacific Ocean; forecast and review of weather.

Pilot chart of north Pacific Ocean, Aug. 1899; chart 1401. Scale 1^o long. = 0.2 in. 20.7 × 35.3 in. [Monthly.] 10c

NOTE.—Contains, in addition to sailing routes, etc., forecast of wind and weather; storm tracks; fishing banks; charts published, etc., June 24–July 24, 1899; line separating lands of Pacific where American date is kept from those where Asiatic date is kept; equator crossings in Atlantic Ocean; also, on reverse, recent accessions to our knowledge of ocean currents obtained through floating bottles.

NAUTICAL ALMANAC OFFICE

NOTE.—The American Ephemeris and Nautical Almanac, the Nautical Almanac extracted from this publication, and other astronomical publications of the Nautical Almanac Office are sold by the Director of the Nautical Almanac, U. S. Naval Observatory, Washington, D. C., and by agents of that office in Boston, New York, Philadelphia, Baltimore, Washington, New Orleans, Los Angeles, San Francisco, Portland (Oreg.), Astoria, Tacoma, Seattle, and Port Townsend. The price of the Ephemeris is \$1.00, and it is issued three years in advance. The Nautical Almanac is sold for half this price by the agents.

American Nautical Almanac for 1900. 2d edition. 1899. viii + 270 pp. 2 il.

Astronomical papers prepared for use of American Ephemeris and Nautical Almanac. 1899. v. 7, pt. 4, 417–471 pp. 4^o 20c

Contents:

Tables of heliocentric motion of Neptune; by Simon Newcomb.

MEDICINE AND SURGERY BUREAU

Supply table of medical department, Navy, with allowance for ships. 1899. 45 pp.

NAVIGATION BUREAU

List and station of commissioned and warrant officers of Navy and Marine Corps on active list, and officers appointed for temporary service, July 3, 1899. 104 pp. *10c

NAVAL WAR COLLEGE AND TORPEDO SCHOOL

Preparation for war, discussion of some of the various elements to be considered in formation of plans of operations and in study of campaigns, by Charles H. Stockton, delivered May 31, 1899. 28 pp.

STEAM ENGINEERING BUREAU

Specifications for 8 Babcock and Wilcox water tube marine boilers. [July, 1899.] 1 p. f^o

YARDS AND DOCKS BUREAU

Abstract from specification for modern brick pavement. [1899.] 2 pp. f^o

General specifications as basis for presentation of plans, specifications, and proposals for locomotive crane of 40 gross tons capacity [at navy yard, League Island, Pa.]. [July, 1899.] 4 pp. f^o

Specifications for boilers for electric-light plant, navy yard, Portsmouth, N. H. July, 1899. 1 p. f^o

Specifications for electric-light building at navy yard, Portsmouth, N. H. [July, 1899.] 4 pp. f^o

- Specifications for enlargement and construction of slip or dock for joint use of United States and Fitchburg Railroad Company at navy yard, Boston, Mass. [June, 1899.] 2 pp. f^o
- Specifications for shops for steam engineering at navy yard, New York. [July, 1899.] 5 pp. f^o

Department of Justice

ATTORNEY-GENERAL, ASSISTANT, FOR POST-OFFICE DEPARTMENT

Liability of sureties on official bonds [of letter-carriers]. 1899. 12 pp.

Post-Office Department

NOTE.—The Department sells the volume of Postal Laws and Regulations at 42c. For post-route maps see, below, Topographer.

United States Official Postal Guide, 2d series, v. 21, no. 7; July, 1899. New York. 40 pp. 12^o [Monthly.] \$2.00 a yr

NOTE.—No. 1, January, for each year, is what is usually known as the Postal Guide, nos. 2-12 being additions and corrections. Sold by the printers, the Metropolitan Job Print, 226 West 26th street, New York City.

FOREIGN MAIL SERVICE

Schedule of steamers appointed to convey mails to foreign countries during Aug. 1899. 1 p. narrow f^o [Monthly.]

RAILWAY MAIL SERVICE

Daily bulletin of orders affecting postal service, v. 20, nos. 5898-5922; July 1-31, 1899. f^o [Daily except Sundays and holidays.]

TOPOGRAPHER

NOTE.—Post-route maps corrected to the 1st of the month, are distributed in March, June, September, and December to the postal service. The maps are issued in three forms, viz: in sheets, backed and mounted on rollers, and folded in book cover to fit the pocket. Orders for the maps should be addressed to the Disbursing Clerk, Post-Office Department, and money-orders should be made payable to him.

Post route map of Alabama, showing post offices, with intermediate distances and mail routes in operation on June 1, 1899. Scale 8.5 m.=1 in. 80c, mounted \$1.60, folded \$1.25

Same, Alaska. Scale 40 m.=1 in. 80c, mounted \$1.60, folded \$1.25

Same, Arizona. Scale 12 m.=1 in. 80c, mounted \$1.60, folded \$1.25

Same, Arkansas, Indian and Oklahoma Territories. Scale 10 m.=1 in. \$1.60, mounted \$2.50, folded \$2.10

Same, California and Nevada. Scale 11 m.=1 in. \$3.20, mounted \$4.20, folded \$3.75

Same, Colorado. Scale 9 m.=1 in. 80c, mounted \$1.60, folded \$1.25

Same, Delaware, Maryland, and District of Columbia. Scale 5 m.=1 in. 80c, mounted \$1.60, folded \$1.25

Same, Florida. Scale 10 m.=1 in. \$1.60, mounted \$2.50, folded \$2.10

Same, Georgia. Scale 8.5 m.=1 in. 80c, mounted \$1.60, folded \$1.25

Same, Illinois. Scale 8.3 m.=1 in. 80c, mounted \$1.60, folded \$1.25

- Post route map of Indiana, showing post offices, with intermediate distances and mail routes in operation on June 1, 1899. Scale 8 m.=1 in. 80c, mounted \$1.60, folded \$1.25
- Same, Iowa. Scale 8 m.=1 in. 80c, mounted \$1.60, folded \$1.25
- Same, Kansas and Nebraska. Scale 10 m.=1 in. \$1.60, mounted \$2.50, folded \$2.10
- Same, Kentucky and Tennessee. Scale 7 m.=1 in. \$1.60, mounted \$2.50, folded \$2.10
- Same, Louisiana. Scale 9 m.=1 in. 80c, mounted \$1.60, folded \$1.25
- Same, Maine. Scale 7.5 m.=1 in. [Scale changed from 8.5 miles to 7.5 miles to an inch with issue for June, 1896.] 80c, mounted \$1.60, folded \$1.25
- Same, Michigan and Wisconsin. Scale 9 m.=1 in. \$1.60, mounted \$2.50, folded \$2.10
- Same, Minnesota. Scale 10 m.=1 in. 80c, mounted \$1.60, folded \$1.25
- Same, Mississippi. Scale 8.5 m.=1 in. 80c, mounted \$1.60, folded \$1.25
- Same, Missouri. Scale 8.5 m.=1 in. 80c, mounted \$1.60, folded \$1.25
- Same, Montana, Idaho, and Wyoming. Scale 14 m.=1 in. \$1.60, mounted \$2.50, folded \$2.10
- Same, New Hampshire, Vermont, Massachusetts, Rhode Island, and Connecticut. Scale 6 m.=1 in. \$1.60, mounted \$2.50, folded \$2.10
- Same, New Jersey. Scale 4 m.=1 in. 80c, mounted \$1.60, folded \$1.25
- Same, New Mexico. Scale 12 m.=1 in. 80c, mounted \$1.60, folded \$1.25
- Same, New York. Scale 5 m.=1 in. \$3.20, mounted \$4.20, folded \$3.75
- Same, North and South Carolina. Scale 8 m.=1 in. \$1.60, mounted \$2.50, folded \$2.10
- Same, North Dakota. Scale 10 m.=1 in. 80c, mounted \$1.60, folded \$1.25
- Same, Ohio. Scale 7 m.=1 in. 80c, mounted \$1.60, folded \$1.25
- Same, Oregon. Scale 10 m.=1 in. 80c, mounted \$1.60, folded \$1.25
- Same, Pennsylvania. Scale 5 m.=1 in. \$1.60, mounted \$2.50, folded \$2.10
- Same, Puerto-Rico. Scale 5 m.=1 in. 80c, mounted \$1.60, folded \$1.25
- Same, South Dakota. Scale 10 m.=1 in. 80c, mounted \$1.60, folded \$1.25
- Same, Texas. Scale 12.5 m.=1 in. \$3.20, mounted \$4.20, folded \$3.75
- Same, Utah. Scale 10 m.=1 in. 80c, mounted \$1.60, folded \$1.25
- Same, Virginia and West Virginia. Scale 8 m.=1 in. \$1.60, mounted \$2.50, folded \$2.10
- Same, Washington. Scale 9 m.=1 in. 80c, mounted \$1.60, folded \$1.25
- Price list of post route maps. [July, 1899.] 1 p. large 8°

Interior Department

NOTE.—The Decisions of the Department of the Interior in pension cases and in land cases are issued in slips and signatures, and in bound volumes at prices ranging from \$1.05 to \$1.45 per volume. Subscribers may deposit \$1.00 in the Department and receive the contents of a volume of the Decisions in separate parts as they appear. Of the Land Decisions usually two volumes are issued yearly, while the Pension-Decision volumes appear at longer intervals, sometimes more than two years apart.

[Decisions in appealed pension and bounty land claims] v. 10, [signatures] 13-15, published separately. p. 193-240. [Contents are the same as those of slips 68-79, for which see catalogues for May, June, and July, 1899.]

[Decisions in appealed pension and bounty land claims, v. 10, slips] 79-88, published separately.

Contents:

- Appeals; rerating; act Mar. 6, 1896. No. 82. June 26, 1899. 4 pp.
 Declarations; execution. No. 88. July 14, 1899. 2 pp.
 Marriage and divorce; decree of nullity. No. 79. June 20, 1899. 6 pp.
 — fraud. No. 85. July 7, 1899. 3 pp.
 — minors' pension act, June 27, 1890. No. 87. July 14, 1899. 3 pp.
 — slaves; impediment. No. 83. June 29, 1899. 2 pp.
 Rating; act June 27, 1890; disabilities. No. 84. July 7, 1899. 3 pp.
 — disability. No. 86. July 12, 1899. 5 pp.
 Remarriage; dependent mother; act of June 27, 1890. No. 80. June 21, 1899. 6 pp.
 Res judicata; stare decisis; rerating. No. 81. June 21, 1899. 2 pp.
- Decisions [of Department and General Land Office] relating to public lands, v. 28, [signatures] 32-35, published separately. p. 497-560.

Contents:

- Additional homestead; sec. 6, act of Mar. 2, 1889, p. 555.
 Alaskan lands; rights of natives, p. 535.
 Application; pending contest; circular regulations, p. 515.
 Conflicting settlement rights; survey in field, p. 510.
 Contest; Indian allotment; homestead application, p. 519.
 — townsite claim; successful contestant, p. 530.
 Desert land entry; assignment; reclamation, p. 497.
 — water right; appropriation, p. 512.
 Forest reserves, p. 521.
 Homestead entry; settlement right, p. 547.
 Interlocutory order; residence; deserted wife, p. 503.
 Mining claim; placer; character of land; discovery, p. 526.
 — proof of expenditure, p. 524.
 — publication of notice; adverse claim, p. 550.
 Oklahoma lands; Greer County, act of Jan. 13, 1897, p. 537.
 Private claims; homestead entry; act of Mar. 3, 1891, p. 544.
 Railroad grant; State act of Mar. 1, 1877, p. 501.
 Repayment; entry erroneously allowed, p. 551.
 Reservoirs for watering live-stock, p. 552.
 Swamp grant; jurisdiction of Land Department; cash entry, p. 558.
- Statistics of Indian tribes, agencies, and schools, corrected to Jan. 1, 1899. 172 pp. 12^o

EDUCATION BUREAU

NOTE.—Such publications of this Bureau as are in print may be had gratuitously by addressing the Commissioner of Education. The separates from the Commissioner's report, however, with a few exceptions, are now issued in limited editions of 500 copies, which are retained by the Bureau for reference and loan purposes and are not available for distribution.

- Argentina. Education in Argentine Republic, Uruguay, and Brazil. 1899. p. 1205-33. (Report, 1898, chapter 22.)
- Arithmetic. American text-books on arithmetic. 1899. p. 789-868. (Report, 1898, chapter 17.)
- Astronomy. Teaching of astronomy. 1899. p. 869-892. (Report, 1898, chapter 18.)
- Atlantic States. Common school education in north Atlantic States, 1830-65. 1899. p. 355-486. (Report, 1898, chapter 11.)
- Australia. Public education in Australia, New Zealand, and Tasmania. 1899. p. 189-214. (Report, 1898, chapter 5.)
- Canada. Education in Canada. 1899. p. 169-187. (Report, 1898, chapter 4.)
- Cuba. Education in Cuba, Porto Rico, and Philippines; by R. L. Packard. 1899. p. 909-983. (Report, 1898, chapter 20.)
- Dental education in United States. 1899. p. 1235-54. (Report, 1898, chapter 23.)
- Educational directory. 1899. p. 1255-80. (Report, 1898, chapter 24.)
- Europe. Education in central Europe. 1899. p. 215-256. (Report, 1898, chapter 6.)
- Foreign influence upon education in United States. 1899. p. 591-629. (Report, 1898, chapter 13.)

- France. Education in France. 1899. p. 693-788. (Report, 1898, chapter 16.)
- French. Report of committee on modern languages [of Modern Language Association of America, on preparatory requirements in French and German]. 1899. p. 1391-1433. (Report, 1898, chapter 26.)
- Great Britain. Education in Great Britain and Ireland. 1899. p. 133-167. (Report, 1898, chapter 3.)
- Hygiene. Means for spreading hygienic knowledge among people. 1899. p. 257-268. (Report, 1898, chapter 7.)
- India. Education in India; by W. E. De Riemer. 1899. p. 339-354. (Report, 1898, chapter 10.)
- Physical training; by Edward Mussey Hartwell. 1899. p. 487-589, 3 il. (Report, 1898, chapter 12.)
- Public school and public library. 1899. p. 673-692. (Report, 1898, chapter 15.)
- Summer schools in England, Scotland, France, and Switzerland; by Herbert B. Adams. 1899. p. 83-131. (Report, 1898, chapter 2.)
- Technical education. International Congress on Technical Education. 1899. p. 295-338. (Report, 1898, chapter 9.)
- Text-books. Digest of text-book laws. 1899. p. 893-908. (Report, 1898, chapter 19.)
- Textile schools. Report on European textile schools. 1899. p. 269-293, 6 il. (Report, 1899, chapter 8.)
- Woman. Status of woman from educational and industrial standpoint. 1899. p. 631-672. (Report, 1898, chapter 14.)

GENERAL LAND OFFICE

- Circular instructions relative to town-sites on public lands, not applicable to Alaska. July 9, 1886, reprint 1899. 10 pp.
- Circular showing manner of proceeding to obtain title to public lands under homestead, desert land, and other laws; issued Oct. 30, 1895. 2d edition. 1896 [reprint 1899]. 283 pp.

GEOLOGICAL SURVEY

NOTE.—The publications of the United States Geological Survey include annual reports and Water-supply and Irrigation Papers, which are intended for free distribution; and Monographs, Bulletins, and folios of the Geologic Atlas of the United States, which are sold at prices ranging from 5c to \$11.00 each. Address the Director of the Geological Survey, Washington. For topographic sheets see below.

- Geologic atlas of United States, Big Trees folio, Cal. Library edition. 1898 [1899]. [2] + 6 pp. 1 il. 1 pl. 3 maps, large 4° (Folio 51.) 25c

Topographic sheets

NOTE.—The Geological Survey is making a topographic map of the United States. The sheets of which it is composed are projected without reference to political divisions, and are designated by some prominent feature found on them. Three scales are used, 1:62,500, 1:125,000, and 1:250,000. These correspond, approximately, to 1 mile, 2 miles, and 4 miles to 1 linear inch on the map. The size, unless otherwise given, is about 17.5 inches in height by 11.5 to 16 inches in width, exclusive of the margin, the width varying with the latitude. A description of the topographic map is printed on the reverse of each sheet catalogued below.

About one-fifth of the area of the country has been mapped, nearly every State being represented. Massachusetts, Connecticut, Rhode Island, New Jersey, and the District of Columbia are completely mapped. Sheets of the regular size are sold by the Survey at 5c each; but in lots of 100 or more copies, whether of the same sheet or of different sheets, the price is 2c each.

- California, Indian Valley map, lat. 40°-40° 10', long. 120° 40'-121°. Scale 1:65,500, contour interval 100 ft. Edition of May, 1893, reprinted May, 1899. 11.2 × 18.6 in.

- Colorado, Rico quadrangle, lat. $37^{\circ} 30' - 37^{\circ} 45'$, long. $108^{\circ} - 108^{\circ} 15'$. Scale 1:62,500, contour interval 100 ft. Edition of June, 1899.
- Connecticut, Danbury sheet, lat. $41^{\circ} 15' - 41^{\circ} 30'$, long. $73^{\circ} 15' - 73^{\circ} 30'$. Scale 1:62,500, contour interval 20 ft. Edition of Mar. 1892, reprinted May, 1899.
- Connecticut, New London sheet, lat. $41^{\circ} 15' - 41^{\circ} 30'$, long. $72^{\circ} - 72^{\circ} 15'$. Scale 1:62,500, contour interval 20 ft. Edition of June, 1893, reprinted May, 1899.
- Connecticut, Winsted sheet, lat. $41^{\circ} 45' - 42^{\circ}$, long. $73^{\circ} - 73^{\circ} 15'$. Scale 1:62,500, contour interval 20 ft. Edition of Apr. 1892, reprinted May, 1899.
- Indian Territory, Coalgate quadrangle, lat. $34^{\circ} 30' - 35^{\circ}$, long. $96^{\circ} - 96^{\circ} 30'$. Scale 1:125,000, contour interval 50 ft. Edition of Apr. 1899.
- Kentucky, Salyersville quadrangle, lat. $37^{\circ} 30' - 38^{\circ}$, long. $83^{\circ} - 83^{\circ} 30'$. Scale 1:125,000, contour interval 100 ft. Edition of May, 1899.
- Nevada, Disaster sheet, lat. $41^{\circ} - 42^{\circ}$, long. $118^{\circ} - 119^{\circ}$. Scale 1:250,000, contour interval 200 ft. Edition of Nov. 1893, reprinted May, 1899.
- New Jersey, Cape May sheet, lat. $38^{\circ} 45' - 39^{\circ}$, long. $74^{\circ} 45' - 75'$. Scale 1:62,500, contour interval 10 ft. Edition of Apr. 1893, reprinted May, 1899.
- New York, Coxsackie sheet, lat. $42^{\circ} 15' - 42^{\circ} 30'$, long. $73^{\circ} 45' - 74^{\circ}$. Scale 1:62,500, contour interval 20 ft. Edition of July, 1894, reprinted May, 1899.
- New York, Kaaterskill sheet, lat. $42^{\circ} - 42^{\circ} 15'$, long. $74^{\circ} - 74^{\circ} 15'$. Scale 1:62,500, contour interval 20 ft. Edition of May, 1899.
- New York, Niagara quadrangle, lat. $43^{\circ} - 43^{\circ} 30'$, long. $78^{\circ} 30' - 79^{\circ} 5'$. Scale 1:125,000, contour interval 20 ft. Edition of May, 1899.
- New York, Poughkeepsie sheet, lat. $41^{\circ} 30' - 41^{\circ} 45'$, long. $73^{\circ} 45' - 74^{\circ}$. Scale 1:62,500, contour interval 20 ft. Edition of Mar. 1894, reprinted May, 1899.
- North Carolina-South Carolina, Pisgah quadrangle, lat. $35^{\circ} - 35^{\circ} 30'$, long. $82^{\circ} 30' - 83^{\circ}$. Scale 1:125,000, contour interval 100 ft. Edition of May, 1899.
- North Carolina-Tennessee, Cranberry quadrangle, lat. $36^{\circ} - 36^{\circ} 30'$, long. $81^{\circ} 30' - 82^{\circ}$. Scale 1:125,000, contour interval 100 ft. Edition of June, 1899.
- Oregon, Port Orford quadrangle, lat. $42^{\circ} 30' - 43^{\circ}$, long. $124^{\circ} - 124^{\circ} 30'$. Scale 1:125,000, contour interval 100 ft. Edition of June, 1899.
- Pennsylvania, Harvey Lake sheet, lat. $41^{\circ} 15' - 41^{\circ} 30'$, long. $76^{\circ} - 76^{\circ} 15'$. Scale 1:62,500, contour interval 20 ft. Edition of July, 1893, reprinted May, 1899.
- Pennsylvania, Sunbury sheet, lat. $40^{\circ} 45' - 41^{\circ}$, long. $76^{\circ} 45' - 77^{\circ}$. Scale 1:62,500, contour interval 20 ft. Edition of Sept. 1893, reprinted May, 1899.
- Pennsylvania, Wilkesbarre sheet, lat. $41^{\circ} - 41^{\circ} 15'$, long. $75^{\circ} 45' - 76^{\circ}$. Scale 1:62,500, contour interval 20 ft. Edition of Apr. 1894, reprinted May, 1899.
- South Dakota-North Dakota, Ellendale quadrangle, lat. $45^{\circ} 30' - 46^{\circ}$, long. $98^{\circ} 30' - 99^{\circ}$. Scale 1:125,000, contour interval 20 ft. Edition of Mar. 1899.
- Vermont, Londonderry sheet, lat. $43^{\circ} - 43^{\circ} 15'$, long. $72^{\circ} 45' - 73^{\circ}$. Scale 1:62,500, contour interval 20 ft. Edition of May, 1899.
- Vermont, Wilmington sheet, lat. $42^{\circ} 45' - 43^{\circ}$, long. $72^{\circ} 45' - 73^{\circ}$. Scale 1:62,500, contour interval 20 ft. Edition of May, 1899.
- West Virginia-Virginia, Beverly sheet, lat. $38^{\circ} 30' - 39^{\circ}$, long. $79^{\circ} 30' - 80^{\circ}$. Scale 1:125,000, contour interval 100 ft. Edition of June, 1892, reprinted May, 1899.

- West Virginia-Virginia, Franklin sheet, lat. 38° 30'-39°, long. 79°-79° 30'.
Scale 1:125,000, contour interval 100 ft. Edition of July, 1896, reprinted May, 1899.
- West Virginia-Virginia, Winchester sheet, lat. 39°-39° 30', long. 78°-78° 30'. Scale 1:125,000, contour interval 100 ft. Edition of Mar. 1894, reprinted Apr. 1899.
- Wyoming, Crandall quadrangle, lat. 44° 30'-45°, long. 109° 30'-110°. Scale 1:125,000, contour interval 100 ft. Edition of Mar. 1899.
- Wyoming, Ishawooa quadrangle, lat. 44°-44° 30', long. 109° 30'-110°. Scale 1:125,000, contour interval 100 ft. Edition of Mar. 1899.

HYDROGRAPHY DIVISION

- Operations at river stations, [calendar year] 1898, report. 1899. 2 pts. 200 pp. (Water-supply and irrigation papers 27, 28; H. doc. 297, 298.) * Each pt. 10c

PATENT OFFICE

NOTE.—The Patent Office publishes specifications and drawings of patents, both in single copies and monthly volumes, the former at 5c and the latter at \$5.00. The former are not enumerated in this catalogue. For certified copies of patents, including specification, drawing, certificate, and grant, the price is 80c. A variety of indexes, giving a complete view of the work of the office from 1790 to date, are published at prices ranging from 25c to \$10.00 per volume. The Rules of Practice and pamphlet Patent Laws are furnished free. The Patent Office issues coupon orders in packages of 20 at \$1.00 per package, or in books containing 100 coupons at \$5.00 per book. One coupon will procure a specification with drawings, and two coupons a copy of the Official Gazette. They are good until used. Address Chief Clerk, Patent Office.

- Official Gazette, July 4-25, 1899; v. 88, nos. 1-4. 1-718 + [lxxxii] pp. il. large 8° [Weekly.] 10c single copy, \$5.00 a yr

NOTE.—Contains the patents, trade-marks, designs, and labels issued each week; also decisions of the Commissioner of Patents and of United States courts in patent cases.

- Rules of practice, revised July 18, 1899. [16th edition.] 108 pp. 2 pl.

PENSION BUREAU

- Laws governing army and navy pensions, with regulations relating thereto. May, 1899. 282 pp. *15c

Department of Agriculture

NOTE.—Those publications of the Department of Agriculture which are for sale, except those of the Weather Bureau, will be supplied by the Superintendent of Documents, Union Building, Washington, D. C. For the unpriced publications application should be made to the Secretary of Agriculture. The Department has no list of addresses to which all its publications are sent. It issues a monthly list of publications, which is mailed to all applicants, enabling them to select such reports and bulletins as interest them.

AGROSTOLOGY DIVISION

- Millets; by Thomas A. Williams. 1899. 28 pp. 6 il. ([Publication] 51; farmers' bulletin 101.)
- New species of North American grasses. July 1, 1899. 6 pp. 2 il. (Circular 16; [publication] 50.)
- Recent additions to systematic agrostology. July 14, 1899. 10 pp. 5 il. (Circular 15; [publication] 49.)
- Sand-binding grasses, by F. Lamson-Scribner; from Yearbook, 1898. [1899 reprint.] ii + 405-420 pp. 11 il. 3 pl.

ANIMAL INDUSTRY BUREAU

Serum treatment of swine plague and hog cholera; by E. A. de Schweinitz, with Marion Dorset. [Revised edition.] 1899. 18 pp. (Bulletin 23; [publication] 117.) *5c

BIOLOGICAL SURVEY DIVISION

Geographic distribution of cereals in North America; by C. S. Plumb. 1898 [reprint 1899]. 24 pp. 3 il. map. (Bulletin 11.) *10c
 Life zones and crop zones of United States; by C. Hart Merriam. 1898 [reprint 1899]. 79 pp. map. (Bulletin 10.) *10c

CHEMISTRY DIVISION

Foods and food adulterants; pt. 9, cereals and cereal products. 1898 [reprint 1899]. vii + 1169-1374 pp. 4 il. 7 pl. (Bulletin 13 [pt. 9].) *15c

ENTOMOLOGY DIVISION

Honey bee, manual of instruction in apiculture; by Frank Benton. 1899. 118 pp. 76 il. 12 pl. (Bulletin 1, new series, 3d edition.) *15c

EXPERIMENT STATIONS OFFICE

Description of new respiration calorimeter and experiments on conservation of energy in human body; by W. O. Atwater and E. B. Rosa. 1899. 94 pp. 12 il. 8 pl. (Bulletin 63; [publication] 285.) *10c
 List of publications of office on food and nutrition of man. [1899.] 5 pp. ([Publication] 238 revised.)
 Some results of dietary studies in United States, by A. P. Bryant; from Yearbook, 1898. [1899 reprint.] ii + 439-452 pp.

PUBLICATIONS DIVISION

List of bulletins and circulars issued by Department of Agriculture and available for free distribution; corrected to July 1, 1899. 20 pp. ([Publication] 247, 4th edition.)
 Monthly list of publications [of Department of Agriculture], July, 1899. 4 pp. ([Publication] 341.)
 Russian exhibition of dairy products, etc. July 24, 1899. 1 p. ([Publication] 339.)

STATISTICS DIVISION

Crop circular for July, 1899. 8 pp.
 Crop Reporter, v. 1, no. 3; July, 1899. 4 pp. 4° [Monthly.]
 NOTE.—For the benefit and information of the crop correspondents of the division, and not for general distribution.

VEGETABLE PHYSIOLOGY AND PATHOLOGY DIVISION

Improvement of plants by selection, by Herbert J. Webber; from Yearbook, 1898. [1899 reprint.] ii + 355-376 pp. 3 il. 2 pl.

WEATHER BUREAU

NOTE.—For these publications application should be made to the Chief of the Weather Bureau.
 Brazos River flood bulletin. July 15, 1899. 1 p. 1 il. f°

Climate and Crop Bulletin, week ending July 3-31, 1899; nos. 16-20 [1899].
24 × 19 in. [Weekly Apr.-Sept., monthly remainder of year.]

NOTE.—Contains reports of temperature and rainfall, with special reference to their effect on crops.

Meteorological chart of Great Lakes. July 28, 1899. 16 × 22 in.
[Monthly.]

NOTE.—Text on face and back of chart gives information as to storms, fog, wrecks, etc.

Monthly Weather Review, v. 27, no. 5, Cleveland Abbe, editor; May, 1899.
p. 187-241, 9 il. 6 pl. 8 pp. of pl. and maps, 4° ([Publication] 200.)
10c single copy, \$1.00 a yr.

NOTE.—Summary of weather and river and flood reports from all parts of the United States, with notes covering other countries and various topics of meteorology. Special articles are—

Balloon ascensions on Mar. 24, 1899, in France, abstract; by F. H. Bigelow.

Canada, Meteorological Service of; by R. F. Stupart.

Derecho, not tornado, of May 16, in Ohio; by J. W. Smith.

Flood of Jan. 1880, at Basseterre, St. Kitts, W. I.; by W. H. Alexander.

Fog, Utilization of; by F. A. Carpenter.

Meteorology, Recent papers bearing on; by W. F. R. Phillips

Nicaragua, Rainfall and temperature in; by A. P. Davis.

Panama, Isthmus of, Climatology of, including temperature, winds, barometric

pressure and precipitation, by H. J. Abbot; with appendix, by A. J. Henry.

Sounds, An advance in measuring and photographing; by B. F. Sharpe.

Tornado photographs, Spurious; by A. J. Henry.

West Indies, Monthly reports of Weather Bureau Service in [abstracts]; by W. B.

Stockman.

Property loss by lightning, 1898, with some general directions as to erection of lightning rods; by Alfred J. Henry and Alexander G. McAdie. 1899. 16 pp. ([Publication] 199.) [From Weather Bureau bulletin 26.]

Weather map, July 1-31, 1899. 19 × 24 in. [Daily.]

Courts of United States

COURT OF CLAIMS

Rules of Court of Claims, adopted Jan. 7, 1895, Jan. 17, 1898, and June 12, 1899, and of Supreme Court relating to appeals. 1899. 48 pp.

Smithsonian Institution

NOTE.—In its latest price-list the Smithsonian Institution publishes this note: "The publications of the Smithsonian Institution consist of, 1, Contributions to Knowledge; 2, Miscellaneous Collections; 3, annual reports; 4, special papers. No sets of these are for sale or distribution, and most of the volumes are out of print. The edition of volumes of Contributions and Collections is limited, and is distributed only to designated public libraries and to learned institutions in this country and abroad. A small edition of some of the papers in the above series is printed for sale or exchange. Members of Congress have copies of the reports at their disposal, and they are also for sale by the Superintendent of Documents." The annual report is the only Smithsonian publication that is a public document. All the others are paid for from the private funds of the Institution. Separates from the reports are for exchange only. The annual report is included in the Congressional set.

Animals desired for National Zoological Park. 1899. 16 pp. il. 11 pl. map, large 8°

Latimer collection of antiquities from Porto Rico in National Museum and Guesde collection of antiquities in Pointe-a-Pitre, Guadeloupe, West Indies, by Otis T. Mason; from reports for 1876 and 1884. 1899. [v] + 372-393 + 731-837 pp. 225 il. 14 pl. ([Publication] 1172.)

Various Bureaus

CIVIL SERVICE COMMISSION

Civil service act and rules promulgated by President. Edition of July 1, 1899. 29 pp.

GOVERNMENT PRINTING OFFICE

Author and title list of books in library. July 1, 1899. 84 pp.

Manual of style governing composition and proof reading in office. 1899. 61 pp.

DOCUMENTS OFFICE

Catalogue of United States Public Documents, monthly, no. 54, June, 1899. p. 299-331.

INTERSTATE COMMERCE COMMISSION

NOTE.—The Commission furnishes its reports gratuitously to those who apply for them.

Grain rates, Grain Shippers' Association of Northwest Iowa v. Illinois Central Railroad Company and others; decided June 22, 1899; report and opinion of commission. 27 pp.

LABOR DEPARTMENT

NOTE.—The Department furnishes its publications gratuitously to those who apply for them.

9th annual report of commissioner, 1893; building and loan associations. 1894 [reprint 1899]. 719 pp. [1st print appeared also as House executive document 209, 53d Congress, 2d session, in v. 30.] *45c

Bulletin 23, July, 1899; edited by Carroll D. Wright, commissioner; Oren W. Weaver, chief clerk. 1899. iii + 501-624 pp. (H. doc. 207, pt. 4.) [Bimonthly.] *10c

Contents:

Decisions of courts affecting labor.

Foreign statistical publications, recent, Digest of.

Government contracts, Recent.

Laws of States relating to labor enacted since Jan. 1, 1896; Arkansas, California, New York.

Massachusetts, Census of, 1895 [v. 5, 6, digest].

Mediation and Arbitration, Board of, New York, 11th annual report [digest].

Paper and pulp, Production of, in United States, Jan. 1-June 30, 1898.

State bureaus of labor statistics, Digest of recent reports of; Kansas, Maine, Missouri, Pennsylvania, West Virginia.

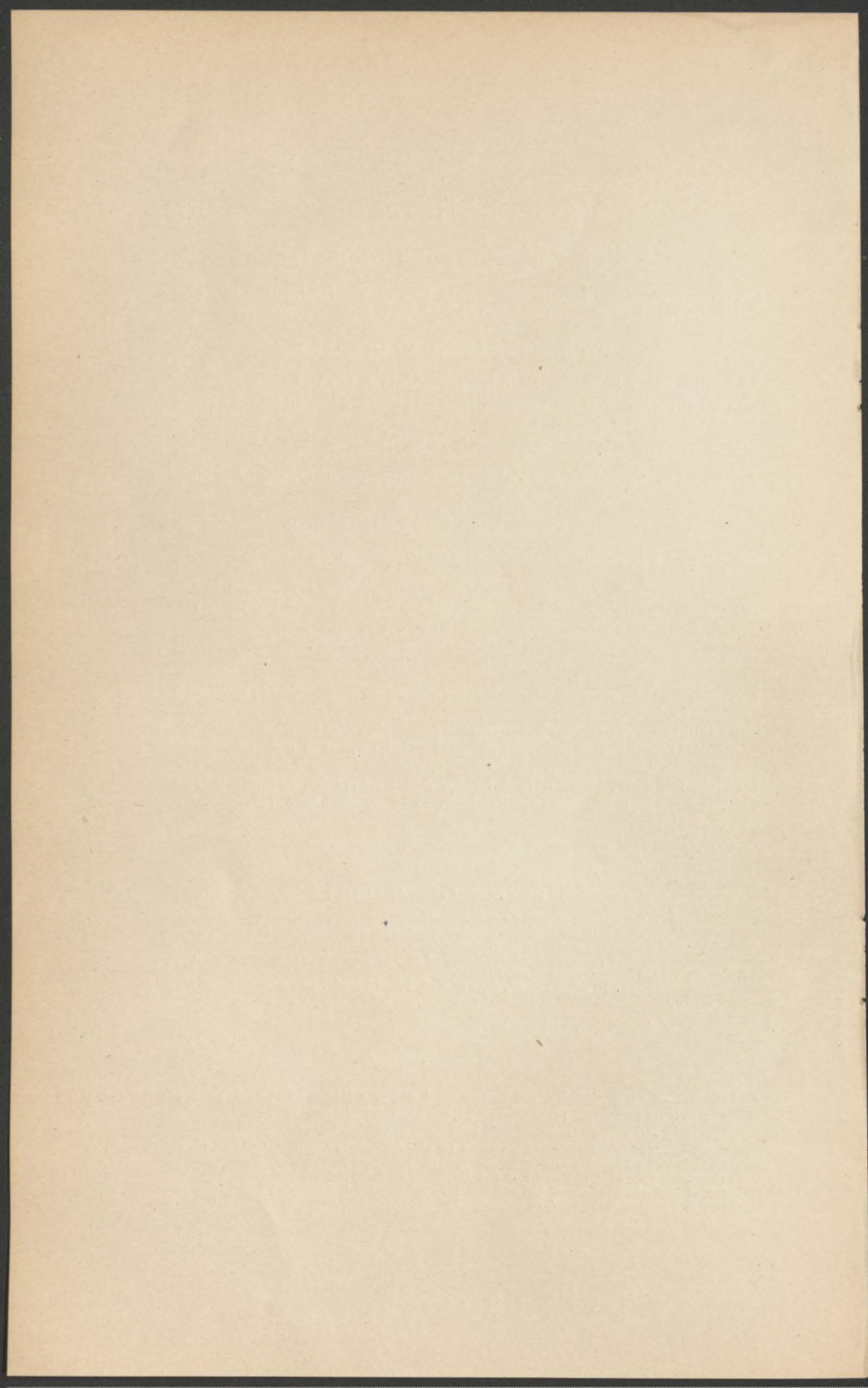
Women's clubs and associations, Attitude of, toward social economics; by E. M. Herroin.

LIBRARY OF CONGRESS

REGISTER OF COPYRIGHTS

Catalogue of title entries of books and other articles entered under copyright law, v. 19, no. 13, v. 20, nos. 1-3; whole nos. 417-420; June 29-July 20, 1899. p. 975-1044, 1-180. [Weekly.]

NOTE.—This publication is prepared by the Register of Copyrights and published by the Treasury Department. It is not sold by the Treasury Department, the Librarian of Congress, nor the Register of Copyrights, but must be subscribed for at the office of the collector of customs for the district in which the person desiring it lives. The price is \$5.00 per year of 52 numbers.



INDEX

	Page		Page
Abdominal bands.....	346	Austria, export conditions.....	340
Abridgment, message and documents.....	337	Automobiles, Paris.....	340
Acts, see Laws.		Axes, Paraguay.....	340
Aden, trade in.....	340	Azores, mail service with.....	339
Adjutant-general.....	345	Russian oil.....	340
Adulteration of food.....	355	Ballistics.....	345
Advance sheets of consular reports.....	339	Balloon ascensions.....	356
Africa, west, United States trade in.....	340	Bananas, Honduras.....	338
Agents, revenue stamp.....	343	Nicaragua.....	339
Agricultural machines, Germany.....	339	Banks, Caracas.....	339
Agricultural products, Argentina.....	338	national.....	343
Agriculture, Mexico.....	339	Barbados.....	339
Uruguay.....	341	Barber chairs, Germany.....	339
Agriculture Dept., publications of.....	355	Basseterre, flood at.....	356
Agrostology Division.....	354	Bassini's operation.....	344
Alabama, post-route map.....	349	Bay of Bengal.....	347
Alaska.....	342	Beacons, list of.....	343
post-route map.....	349	Bees.....	355
Alimentary pastes.....	341	Beet-sugar, Germany.....	340
Amaurosis, toxic.....	344	Belfast Bay.....	343
Amazon Valley.....	339	Belgium, fuel.....	339
American Ephemeris, papers for.....	348	slate.....	341
American Nautical Almanac.....	348	Bengal, Bay of.....	347
American Republics Bureau.....	338	Berberi, etiology of.....	344
Aneurism, traumatic.....	344	Beverly, W. Va., vicinity.....	353
Anglo-Russian oil syndicate.....	341	Bibliography of Venezuela.....	339
Animal Industry Bureau.....	355	Bigtrees, Cal., geologic atlas folio.....	352
Animals.....	356	Biological Survey Division.....	355
Anthrax œdema.....	344	Black Beach Anchorage.....	347
Antiquities.....	356	Boilers, marine.....	348
Antiscorbutic, pulque as.....	329	Bonds, United States, caveated.....	343
Antofagasta and Bolivia Railway.....	338	Book notices.....	338
Antwerp, art exhibition.....	339	Bookkeeping and Warrants Division.....	342
Apiculture.....	355	Borate of lime.....	338
Appeals.....	356	of soda.....	338
Appointments Division.....	342	Borax, Argentina.....	338
Appraisers, decisions, etc.....	342	Borneo, petroleum.....	340
Arbitration Board, N. Y.....	357	Boston Navy-Yard, see Charlestown Navy-Yard.	
Arbitrations, international.....	338	Bottles, floating.....	348
Argentina.....	339	Brazil.....	339
education in.....	351	education.....	351
Arithmetic.....	351	industries, etc.....	338
Arizona, post-route map.....	349	railroad ties.....	340
Arkansas, labor laws.....	357	rails.....	340
post-route map.....	349	Brazos River.....	355
Army, enlistments.....	345	Breadstuffs, exports of.....	345
officers.....	345	Brick factory, Monterey, Mex.....	339
pensions.....	354	Brick pavement.....	348
Art.....	339	British, see Great Britain.	
Artillery circular.....	345	British Columbia, assay offices.....	339
Asiatic Turkey.....	339	mining laws.....	340
Assay offices, British Columbia.....	339	British India, see India.	
Associations.....	357	British West Indies, see West Indies.	
Astronomical papers.....	348	Brooklyn Navy-Yard, see New York Navy-Yard.	
Astronomy.....	351	Bubonic plague.....	344
Athens, merchants in.....	339	Building associations.....	357
Atlantic coast.....	342	Bulletins, see Farmers' bulletins— bureaus issuing bulletins.	
lights on.....	343	Bullets.....	344
Atlantic Ocean, equator crossings.....	348	Buoys, list of.....	343
pilot chart.....	348	California, labor laws.....	357
Atlantic States, north, education in.....	351	post-route map.....	349
Attorney-General, see Justice Dept.		Calorimeter.....	355
Attorney-General, Assistant, for Post- Office Dept.....	349	Canada, canal problem.....	339
Australasia, trade.....	340	education.....	351
Australia, Federal movement in.....	339		
public education in.....	351		

	Page		Page
Canada, meteorology	356	Cotton mill, Orizaba	339
Canal problem, Canadian	339	Cotton-spinning machinery, Japan	339
Candles, Philippine Islands	340	Court-martial order	346
Cape May, N. J., vicinity	353	Court of Claims	356
Car couplers, Europe	340	Coxsackie, N. Y., vicinity	353
Caracas, American bank	339	Cranberry, N. C., vicinity	353
Caribbean Sea	347	Crandall Creek, vicinity	354
Catalogue of copyrights	357	Crop Bulletin	356
of H. O. publications	346	Crop circular	355
of public documents	357	Crop Reporter	355
Census of Massachusetts	357	Crop zones of United States	355
of U. S., 11th, statistical atlas	337	Crops, Russia	340
Cereals	355	Cruisers	346
in North America	355	Cuba	338
Champlain, Lake, beacons, etc.	343	education	351
Charlestown Navy-Yard	349	immigration regulations	345
Charts, see Maps and charts.		Manchester exports to	341
Chatham Island	347	railroads	345
Cheese, Philippine Islands	340	tariff	339, 345
Chemistry Division	355	Curacao, colony of	338
Chile	338	Currency, circulation of	344
China, plumbago	340	paper	345
United States trade in	339	Currents, ocean	348
water filters	340	Customs and Insular Affairs Division	345
Cholera	344	Customs Division	342
Chungking, trade of	340	Customs duties, see Tariff.	
Circulars, see Dept., etc., issuing them.		Cyclones	348
Circulation of currency	344	Daily postal bulletin	349
Civil marriage law, Peru	339	Dairy products, Russian	355
Civil service, Internal Revenue Service	343	Danbury, Conn., vicinity	353
tables	338	Dawson City	339
Civil Service Commission	357	Day marks, list of	343
Civil War, official records	346	Debt, public	341
Climate and Crop Bulletin	356	Decisions, labor	357
Clubs for women	357	land	351
Coal for railroads, Chile	338	patents	354
Coalgate, Ind. T., vicinity	353	pension	350, 351
Coast and Geodetic Survey	342	Treasury Department	342
Coffee	339	Delaware, post-route map	349
Brazil	338	Delaware River	342
Coins, foreign	344	Dentistry	351
Colombia	338	Derecho in Ohio	356
cotton goods	341	Designs	354
match monopoly	340	Diamond mining, Minas Geraes	341
Colonial office, France	339	Diet, publications relating to	355
Colorado, post-route map	349	Dietary studies	355
Commerce, see Exports—names of countries and places.		Diplomatic list	338
Commerce, etc., Monthly Summary of	345	Directory, Congressional	338
advance sheets	344	educational	351
Common schools	351, 352	Disaster Peak, vicinity	353
Composition, see Printing.		Distance circular	346
Comptroller of Currency	343	District of Columbia, post-route map	349
Comptroller of Treasury	343	Documents, bound volumes	337, 338
Concurrent resolutions	337	monthly catalogue	357
Condition of Treasury	342	Documents Office	357
Congress	337	Dolls, Paraguay	340
Congressional Directory	338	Dominican Republic, see Santo Domingo.	
Congressional documents, bound	337, 338	Dried fruit	339
Congressional Record	337	Druggists' scales	339
Connecticut, post route map	350	Dutch East Indies, mining law	339
Conservation of energy	355	Dutch West Indies, see West Indies.	
Consular Reports	340	Duties, see Tariff.	
advance sheets	339	East, indigo	341
Consumption, see Tuberculosis.		East Indies, Dutch, mining law	339
Contracts, Government	357	Economics, social	357
Conventions	337	Ecuador	338
Conway Bay	347	electricity	339
Cooking stoves, Uruguay	339, 340	machine trade	340
Copper, Chile	338	resources	339
Urals	341	Education, foreign influence upon	351
Copper sulphate, France	341	see also Education Bureau.	
Copyrights, catalogue of	357	Education Bureau	351
Japan	341	Educational directory	351
Corporations, foreign, in Russia	340	Eel River	342
Cotton	339	Electric railroads, Germany	341
exports of	345	Jamaica	341
Cotton goods, Colombia	341	Milan	340
		Electricity, Brazil	338

Page	Page		
Electricity, Ecuador	339	German language	352
Japan	339	Germany	339, 340
wood seasoning by	341	agricultural machines	339
Ellendale, N. Dak., vicinity	353	American barber chairs	339
Emigration to Siberia	340	beet-sugar industry	340
to South America	340	dried fruit	339
Energy	355	druggists' scales	339
Engineer Department	345	electric railroads	341
report, 1892	338	furniture	339
report, 1895	338	labor	341
England, see Great Britain.		locomotives	340
Enlistment, Army	345	merchant marine	341
Entomology Division	355	Russian hogs	340
Equator crossings	348	ship-building	341
Equipment Bureau	346	soap and perfumery	340
Etiology of beriberi	344	tool-machine trust	340
Eulogies on William F. Love	337	trade with Switzerland	341
on Justin S. Morrill	337	wool import	340
on Stephen A. Northway	337	Gibraltar, trade in	341
Europe, central, education in	351	Glacier Bay	342
Executive proclamations	337	Gold, in Minas Geraes	341
Expenditures	339, 342	production of	339
Experiment Stations Office	355	Government bonds, caveated	343
Export academy, Vienna	341	Government contracts	357
Exports	344, 345	Govt. documents, see Documents.	
see also countries and places.		Government Printing Office	357
Exposition at Lima	339	Grain, in North America	355
Fair of Nizhni Novgorod	341	products	355
Farm products, see Agricultural products.		rates	357
Farmers' bulletins	354	Grain Shippers' Assoc. of N. W. Iowa	357
Femoral hernia	344	Grass	354
Fig cultivation in Greece	341	sand-binding	354
Finance, etc., Monthly Summary of	345	Great Britain, colonies	339
advance sheets	344	education	352
Fish Commission bulletin	338	labor	341
Fitchburg Railroad	349	possessions in America	345
Fitzhugh Sound	347	summer schools	352
Floating bottles	348	tropical diseases	341
Flood at Basseterre	356	Great Lakes, meteorological chart	356
Flood service	356	Greece, fig cultivation	341
Florida, post-route map	349	Guadeloupe	340
Flour, Spanish tariff	339	Guatemala	338
Fog	356	Guesde collection of antiquities	356
Fog signals, list of	343	Gulf of Mexico	347
Foods	355	lights on	343
publications relating to	355	Haiti	338
Force and energy	355	Harbor improvements, Montevideo	339, 340
Foreign coins	344	Victoria	340
Foreign Commerce Bureau	339	Harbor regulations, Puerto Cabello	340
Foreign Mail Service	349	Harvey Lake, vicinity	353
Formosa, railroads	339	Hawaii	340
France	339	Health, bills of	341
balloon ascensions	356	Health authorities	344
druggists' scales	339	Health Reports	344
economic conditions	341	Health service, public	344
education	352	Heating stoves, Uruguay	339, 340
language	352	Hektograph copies of invoices	341
slate	341	Heliocentric motion of Neptune	348
sulphate of copper	341	Hernia	344
summer schools	352	femoral	344
wheat for pastes	341	Herniotomies	344
workmen	340	Hogs, cholera	355
Franklin, W. Va., vicinity	354	Russian, in Germany	340
French, see France.		Holland, see Netherlands.	
Freshwater Bay	347	Honduras, bananas	338
Fruit	339	Honey bee	355
Fuel	341	Hospital practice	344
Belgium	339	Hydrographic bulletin	347
Germany	339	Hydrographic Office	346
publications of	346	Hydrography Division	354
Galapagos Islands	347	Hygiene	352
Gardner Bay	347	Hygienic Laboratory	344
General appraisers	342	Idaho, post-route map	350
General Land Office	352	Iguana Cove	347
decisions	351	Illinois, post-route map	349
General orders	345, 346	Illinois Central Railroad	357
Geologic atlas of United States	352	Immigration, Cuba	345
Geological Survey	352	Philippine Islands	345
Georgia, post-route map	349		

	Page		Page
Immigration, Porto Rico	345	Laws, navigation	344
Immigration decisions	342	pension	354
Import duties, see Tariff		League Island Navy-Yard	348
Imports and exports	344, 345	Leather, Brazil	338
see also countries and places.		Russia	340
India, coast chart	347	Leprosy	344
education	352	Letter-carriers	349
India-rubber trade	340	Libraries, public	352
Indian agencies	351	Library of G. P. O.	357
Indian schools	351	Life-Saving Service	343
Indian Territory, post-route map	349	Life saving stations	343
Indian Valley, vicinity	352	Life zones of United States	355
Indiana, post-route map	350	Light-House Board	343
Indians	351	Lightning	356
Indigo	341	Lights, list of	343
Inherited property, France	339	Lima, exposition at	339
Inspectors of steam vessels	342	Lime, borate of, Argentina	338
Interior Department	350	Loan associations	357
Internal revenue, decisions	342	Loans and Currency Division	343
laws	343	Locomotives, Germany	340
Internal Revenue Office	343	Londonderry, Vt., vicinity	353
report, 1896	338	Long Island Sound	342
International arbitrations	338	Louisburg Harbor	347
International Congress on Technical Education	352	Louisiana, post-route map	350
Interstate Commerce Commission	357	Lourenco Marquez, tonnage dues	341
Invoices	341	Love, William F., eulogies	337
Iowa, post-route map	350	Machines, Ecuador	340
Ipeacanha	338	German tariff	339
Ireland, education	352	McKinley, William	340, 341
Iridium	340	Madagascar, taxes	340, 341
Irish Sea	347	Mail service with Azores	339
Iron, Urals	341	Maine, labor statistics	350
Irrigation papers	354	post-route map	341
Isabooa Mesa, vicinity	354	Malta, American wheat at	341
Isthmus of Panama	336	Manchester, Eng., exports	340
Jamaica, coffee	339	Manganese ore, Japan	340
orange growing	341	Manheim, trade and industries	340
railways	341	Manufactures, exports from U. S.	345
tariff	340	Maps and charts	342, 347, 352, 346
James Bay	347	catalogue	346
Japan, copyright law	341	Marine boilers	348
cotton-spinning machinery	339	Marine Corps, officers	348
electric industry	339	Marine Hospital, Memphis	344
laws relating to foreigners	341	Marine Hospital Service	341, 344
manganese ore	340	statistics	344
patents and trade-marks	341	Mariners, Notice to	342, 343, 347
plumbago	340	Marriage law, civil, Peru	339
seal fisheries	340	Maryland, post-route map	349
tea exports	340	Massachusetts, census	357
trade-mark law	341	post-route map	350
Java, Anglo-Russian oil syndicate	341	Matches, Colombia	340
Joint resolutions	337	use of phosphorus	341
Justice Department, report, 1896	338	Mauritius, United States trade with	340
Kaaterskill, N. Y., vicinity	353	Mechanical power, Germany	339
Kansas, labor statistics	357	Medical Dept., Navy, see Medicine and Surgery Bureau	348
post-route map	350	Medicine and Surgery Bureau	348
Kentucky, post-route map	350	Medicines, patent, Portugal	340
Korea, trade of	341	Memorial addresses on W. F. Love	337
Kyao-chau harbor regulations	341	on J. S. Morrill	337
Labels	354	on S. A. Northway	337
Labor, decisions	357	Memphis, Marine Hospital	344
Germany	341	Memphrenagog, Lake, beacons, etc.	343
Great Britain	341	Merchant marine, see Shipping	
laws	357	Merchants in Athens	339
statistics	357	Message and documents, abridgment	337
Labor Department	357	Messages and papers of Presidents	338
Labrador	347	Metabolism in human body	355
Lakes, see Great Lakes—names of lakes.		Metatarso-phalangeal junction	344
Land Office, General	352	Meteorological chart, Great Lakes	356
decisions	351	Meteorology	356
Lands, public, see Public lands.		Mexico	340
Latimer collection of antiquities	356	agriculture	339
Latin America, see American Republics Bureau.		industries, etc.	339
Laws	336, 337	Mexico, Gulf of	347
internal revenue	343	lights on	343
labor	357	Michigan, post-route map	350
		Milan, electric tramways	340
		Military Academy	345

	Page		Page
Millet	354	Oil, see Petroleum.	
Minas, Geraes, diamonds and gold	341	Oklahoma, post-route map	349
Mineral oils, see Petroleum.		Omaha Exposition	340
Mining, British Columbia	340	Operating room, portable	344
Dutch East Indies	339	Orange growing, Jamaica	341
Szechuan	340	Orders, see Court-martial — General	
Minnesota, post-route map	350	Navy-yard — Postal service —	
Mint Bureau	344	Special orders.	
Mississippi, post-route map	350	Oregon, post-route map	350
Missouri, labor statistics	357	Orizaba, cotton mill	359
post-route map	350	Osmium	340
Modern Language Assoc. of America	352	Pacific Ocean, equator crossings	348
Money, see Currency.		pilot chart	348
Montana, post-route map	350	Pamphlet laws	356
Monterey, Mex., brick factory	339	Panama, Isthmus of	356
Montevideo, harbor improvements	339, 340	Paper and pulp	357
Monthly Summary of Finance, etc.	345	Paper currency, outstanding	345
advance sheets	344	Paraguay, axes and dolls	340
Monthly Weather Review	356	colonization in	341
Morrill, Justin S., eulogies	337	imports of	340
Motor-carriages, see Automobiles.		sugar	340
Naphtha industry, Russia	340	Paris, automobiles	340
Naruto Passage	347	slaughter-houses	341
National banks	343	Pastes, alimentary	341
National Museum, antiquities	356	Pasteur Institute at Rio	344
National Zoological Park	356	Patent medicines, Portugal	340
Nautical Almanac Office	348	Patent Office	354
Naval War College and Torpedo		Patents	354
School	348	Japan	341
Navigation Bureau, Navy Department	348	Pavement, brick	348
Treasury Department	341, 344	Pay, Navy	343
Navigation decisions	342	Pay Department, Army	346
Navigation laws	344	Pearl fishing, Venezuela	340
Navy, officers	348	Pennsylvania, labor statistics	357
operations in war with Spain	337	post-route map	350
pay	343	Penobscot Bay	343
pensions	354	Penobscot River	343
preparation for war	348	Pension Bureau	354
Navy Department	346	Pensions	354
Navy-yard order	346	decisions	350, 351
Nebraska, post-route map	350	Perfumery, Germany	340
Neptune, heliocentric motion of	348	Persia, art	339
Netherlands, American fruit	339	Peru	339
Nevada, post-route map	349	Petroleum, Borneo	340
New Hampshire, post-route map	350	exports of	345
New Jersey, post-route map	350	Java	341
New London, Conn., vicinity	353	Russian, in Azores	340
New Mexico, post-route map	350	Petroleum refineries	343
New York City, exports to Venezuela	339	Philippine Islands, cheese and can-	
New York Navy-Yard	349	dies	340
New York State, Arbitration Board	357	education	351
labor laws	357	French view of situation in	340
post-route map	350	immigration regulations	345
New Zealand, public education	351	Manchester exports to	341
Newfoundland	347	tariff	345
Niagara Falls, vicinity	353	Phosphorus, use of, in matches	341
Nicaragua, banana trade	339	Physical training	352
rainfall and temperature	356	Pig iron in the Urals	341
Nizhni Novgorod, fair of	341	Pigs, see Hogs.	
Norfolk Island	341	Pilot charts	348
North America, cereals in	355	Pipe lines	343
North Carolina, post-route map	350	Pisgah Ridge, vicinity	353
North Dakota, post-route map	350	Plague	344
Northway, Stephen A., eulogies	337	Plants, improvement of	355
Norway, American fruit	339	Platinum	341
railroads	340	Plumbago	340
reindeer	340	Pointe-a-Pitre, antiquities	356
Notice to Mariners	342, 343, 347	Population of United States	344
Nutrition, see Foods.		Port, see name of port.	
Oaths	342	Port dues, see Tonnage dues.	
Ocean currents	348	Port Orford, Oreg., vicinity	353
Oedema, anthrax	344	Porto Rico, antiquities	356
Officers, Army	345	education	351
Marine Corps	348	immigration regulations	345
Navy	343, 348	Manchester exports to	341
Pay Department	346	post-route map	350
Official Gazette, Patent Office	354	tariff	345
Ohio, derecho in	356	Portsmouth Navy-Yard	348
post-route map	350	Portugal, patent medicines	340

	Page		Page
Post Office Bay	347	Rules of practice, Patent Office.....	354
Post-Office Department.....	349	Russia.....	340
Post-route maps.....	349, 350	dairy products.....	355
Postal bulletin, daily.....	349	hogs in Germany.....	340
Postal Guide.....	349	leather industry.....	340
Postal service, orders.....	349	naphtha industry.....	340
Postmen, see Letter-carriers.		oil in Azores.....	340
Poughkeepsie, N. Y., vicinity.....	353	railroad business.....	341
President of United States.....	338	Russian oil syndicate, Anglo.....	341
message.....	337	Sail vessels.....	342
messages and papers.....	338	Sailing routes.....	348
Printing.....	357	St. George's Channel.....	347
Proclamations, executive.....	337	Salvador, export of silver.....	339
Projectiles, see Ballistics.		Salversville, Ky., vicinity.....	353
Proof-reading.....	357	San Cristobal Island.....	347
Property, inherited, France.....	339	Sand-binding grasses.....	354
loss of, by lightning.....	356	Sanitary Reports and Statistics, Divi-	
Protection, Port.....	343	sion of.....	344
Provisions, exports of.....	345	Santo Domingo, tariff.....	339
Public debt.....	341	Sappho Cove.....	347
Public documents, see Documents.		Scales, druggists'.....	339
Public Health Reports.....	344	Schools.....	351, 352
Public health service.....	344	Indian.....	351
Public lands.....	352	summer schools.....	352
decisions.....	351	Scotland.....	341
title to.....	352	seal fisheries, Japan.....	340
Public libraries.....	352	Serum treatment.....	355
Public schools.....	351, 352	Session laws.....	336
Publications, Agriculture Dept.....	355	Shanghai, passenger transit.....	340
Experiment Stations Office.....	355	Sheep-bound reserve.....	337
Hydrographic Office.....	346	Ship-building, Germany.....	341
Publications Division.....	355	Shipping, Germany.....	341
Puerto Cabello, exports from.....	339	laws.....	344
harbor regulations.....	340	see also Tonnage dues.	
Puerto Rico, see Porto Rico.		Shoes, Ecuador.....	338
Pulp.....	357	Siberia.....	340
Pulque.....	339	Siberian Railway.....	341
Quarantine.....	341, 344	Sicily, sulphur ore.....	341
Quartermaster's Department.....	346	Silesia, public parks.....	340
Railroad ties, Brazil.....	340	wool.....	340
Railroads, Chile.....	338	Silk industry in United States.....	339
Cuba.....	345	Silver, Salvador.....	339
Formosa.....	339	Slate.....	341
Jamaica.....	341	Rheims.....	340
Mexico.....	340	Slaughter-houses, Paris.....	341
Norway.....	340	Smallpox.....	344
Russia.....	341	Smith Sound.....	347
Siberia.....	341	Smithsonian Institution.....	356
Syria-Ottoman.....	341	Smoke, consumption of.....	341
Transvaal.....	340	Soap, Germany.....	340
Uruguay.....	339	Social economics.....	357
see also Electric railroads.		Soda, borate of, Argentina.....	338
Rails, Brazil.....	340	Sounds.....	356
Railway Mail Service.....	349	South African Republic, see Trans-	
Railways, see Railroads.		vaal.	
Rainfall.....	356	South America.....	338, 340
Raynaud's disease.....	344	South Carolina, post-route map.....	350
Reappraisements of merchandise.....	342	South Channel, Irish Sea.....	347
Rebellion Records.....	346	South Dakota, post-route map.....	350
Receipts and expenditures.....	339, 342	Spain, flour.....	339
Reciprocity treaty with Barbados.....	339	sugar.....	340
Record, Congressional.....	337	see also War with Spain.	
Red Bay.....	343	Special circular.....	346
Register of copyrights.....	357	Special orders.....	345, 346
Registered bonds.....	343	Stamps, revenue.....	343
Reindeer, Norway.....	340	State Department.....	338
Resolutions.....	337	Stationery, etc., Division.....	341
Respiration calorimeter.....	355	Statistical Abstract, 1897.....	338
Revenue stamps.....	343	Statistical atlas, 11th census.....	337
Rheims, slate trade.....	340	Statistics Bureau.....	344
Rhode Island, post-route map.....	350	Statistics Division, Agriculture Dept.....	355
Rico, Colo., vicinity.....	353	Statutes at Large.....	337
Rio de Janeiro, Pasteur Institute.....	344	Steam boilers, see Marine boilers.	
tuberculosis.....	344	Steam Engineering Bureau.....	348
Rio Grande do Sul.....	338	Steam vessels, inspectors of.....	342
River and flood service.....	356	Steamboat Inspection Service.....	342
River stations.....	354	Steamers, mail.....	349
Rockhill, W. W.....	339	Steamship connection with Syria.....	340
Roentgen rays.....	344	Stoppage circular.....	346

	Page		Page
Stoves, Uruguay	339, 340	Turkey, invoices	340
Stream measurements	354	trade suggestions	339
Street railroads, see Electric railroads.		Typography	357
Sugar	340	Urals, pig iron and copper	341
Sugar beet, Germany	340	Uruguay	339
Sugar refineries	343	education	351
Sullivan Bay	347	stoves	340
Sulphate of copper	341	trade and agriculture	341
Sulphur ore, Sicily	341	Utah, post-route map	350
Summer schools	352	Vaccination Institute at Rio	344
Sunbury, Pa., vicinity	353	Valparaiso, import trade	338
Supervising Surgeon-General, see Marine Hospital Service.		Various bureaus	357
Supply table, Navy	348	Vegetable Physiology and Pathology	
Supreme Court	356	Division	355
Swine, see Hogs.		Venezuela	339
Switzerland, Germany's trade with	341	pearl fishing	340
summer schools	352	Vermont, post-route map	350
Syria, steamship connection with	340	Vessels, see Sail vessels—Shipping—Steam vessels—Tonnage dues.	
Syria-Ottoman Railway	341	Victoria, harbor improvements	340
Szechuan, mining	340	Vienna, export academy	341
Tagus Cove	347	Virginia, post-route map	350
Tariff, Argentina	339	Vladivostok, trade	341
Cuba	339	Volga River	340
Jamaica	340	War, preparation for	348
Peru	339	War Department	345
Santo Domingo	339	report, 1892	338
see also names of articles imported.		report, 1895	338
Tariff circular	345	War of Rebellion	346
Tariff decisions	342	War Records Office	346
Tasmania, public education	351	War-ships	346
Taxation, Madagascar	340, 341	see also Cruisers.	
Tea	342	War with Spain	338
Japanese exports	340	operations of Navy	337
Technical Education, International Congress on	352	Washington, see District of Columbia.	
Temperature	356	Washington State, post-route map	350
Tennessee, post-route map	350	Water filters, China	340
Terrapin Road	347	Water-supply and irrigation papers	354
Texas, Brazos River flood	355	Weather Bureau	355
post-route map	350	Weather map	356
Text-book laws	352	Weather Review, Monthly	356
Textile schools	352	Webb Cove	347
Tonnage dues, Lourenço Marquez	341	West Indies	338
Tool-machine trust, German	340	cheese and candles	340
Tools, German tariff	339	commerce	345
Topographer, Post-Office Department	349	Weather Bureau Service	356
Topographic sheets	352	West Virginia, labor statistics	357
Tornado photographs	356	post-route map	350
Town sites	352	Wheat, for alimentary pastes	341
Toxic amaurosis	344	Malta	341
Trade, see Exports—names of countries and places.		Wilkesbarre, Pa., vicinity	353
Trade-marks	354	Wilnington, Vt., vicinity	353
Japan	341	Winchester, Va., vicinity	354
Tramways, electric, Milan	340	Winsted, Conn., vicinity	352
Transvaal, goods in	341	Wisconsin, post-route map	350
importers in	340	Women, clubs for	357
railroads	340	education	352
Traumatic aneurism	344	Wood seasoning by electricity	341
Traveling accounts, Treas. Dept	342	Wool	340
Treasurer of United States	345	Workmen, France	340
Treasury, condition of	342	Wreck Bay	347
Treasury decisions	342	Wyoming, post-route map	350
Treasury Department	341	X rays	344
Treaties	337	Yangtze River, trade regulations, etc.	341
Trinidad, sugar	340	Yards and Docks Bureau	348
Tropical diseases	341	Yearbook of Agriculture Dept., separate rates	354, 355
Tuberculosis, among sailors	344	Yellow fever	344
in Rio	344	Zoological Park, National	356

