

No. 79

July, 1901

CATALOGUE

OF

United States

Public Documents

Issued Monthly

BY THE

SUPERINTENDENT OF DOCUMENTS

Government Printing Office

Washington
Government Printing Office

1901

Table of Contents

	Page		Page
General Information.....	339	Post-Office Department.....	356
Congress of United States.....	341	State Department.....	356
Laws.....	341	Treasury Department.....	360
Senate.....	341	War Department.....	363
House.....	342	District of Columbia.....	365
Sheep-bound Reserve.....	342	Smithsonian Institution.....	365
President of United States.....	342	Various Bureaus.....	366
Agriculture, Department of.....	343	Shipments to Depositories.....	369
Interior Department.....	346	Index.....	I
Navy Department.....	353		

Abbreviations Used in this Catalogue

Agricultural.....	agric.	Number, numbers.....	no., nos.
Amendments.....	amds.	Octavo.....	8°
American.....	Amer.	Page, pages.....	p., pp.
Appendix.....	app.	Part, parts.....	pt., pts.
Association.....	assoc.	Plate, plates.....	pl.
Commission.....	comm.	Portrait, portraits.....	por.
Committee.....	com.	Quarto.....	4°
Congress.....	Cong.	Railway.....	ry.
Consular.....	cons.	Report.....	rp.
Department.....	dept.	Reservation.....	Res.
Document.....	doc.	Resolution.....	res.
Executive.....	ex.	Secretary.....	secy.
Exposition.....	expos.	Section, sections.....	sec.
Facsimile, facsimiles.....	facsim.	Senate bill.....	S.
Folio.....	f°	Senate concurrent resolution.....	S. C. R.
General.....	gen.	Senate document.....	S. doc.
Geologic.....	geol.	Senate joint resolution.....	S. J. R.
Government.....	Govt.	Senate report.....	S. Rp.
House bill.....	H.	Senate resolution (simple).....	S. R.
House concurrent resolution.....	H. C. R.	Session.....	sess.
House document.....	H. doc.	Sixteenmo.....	16°
House joint resolution.....	H. J. R.	Society.....	soc.
House report.....	H. rp.	Superintendent.....	supt.
House resolution (simple).....	H. R.	Table, tables.....	tab.
Illustrated, illustration, illustrations.....	il.	Thirtytwo-mo.....	32°
Inch, inches.....	in.	Topographic.....	topog.
Island.....	I.	Treasury.....	Treas.
Latitude.....	lat.	Twelvemo.....	12°
Leaf, leaves.....	l.	Twentyfour-mo.....	24°
Longitude.....	long.	Versus.....	vs., v.
Mile, miles.....	m.	Volume, volumes.....	v.
Miscellaneous.....	mis.	Year.....	yr.
Nautical.....	naut.		

NOTE.—Documents for sale by this office are indicated by a star (*) preceding the price named. Words and figures inclosed in brackets [] are given for information, but do not appear on the title-pages of the publications catalogued. When size is not given, octavo is to be understood. The dates, including day, month, and year, given with Senate and House documents and reports, are the dates on which they were ordered to be printed. Usually the printing promptly follows the ordering, but various causes sometimes make delays. When Congress and session are not given with the numbers of Senate and House documents and reports, 56th Congress, 2d session, is to be understood.

General Information

With Reference to the Distribution of Documents

CATALOGUE DISTRIBUTION

Hereafter the monthly catalogue of public documents can be supplied only as vacancies occur in the list, as the entire edition authorized by law is exhausted.

The monthly catalogue is now sent to each Senator, Representative, Delegate, and officer in Congress, to each State and Territorial library and designated depository, to substantially all Government authors, and to as many school, college, and public libraries as the limited edition will supply.

NO FREE DISTRIBUTION TO INDIVIDUALS

The Superintendent of Documents is not authorized to supply documents free to individuals, except publications specifically authorized by Congress to be distributed by him to persons designated by Senators, Representatives, or Delegates.

DISTRIBUTION TO LIBRARIES

The Superintendent of Documents will receive documents from libraries that have them in duplicate, and will redistribute the same to other libraries to complete broken sets therein, or to libraries that have no Government publications.

In making application for documents librarians should state clearly what is desired, and certify whether the documents asked for are for the purpose of making up deficiencies, or the creation of a document library.

In no case will documents be supplied to a library unless it has a permanent organization and, if not a designated depository, the indorsement of the Representative in Congress from the district in which located.

Documents authorized by law to be distributed to designated depository libraries will be forwarded by registered mail as soon as received from the Government Printing Office. A list of documents forwarded this month is given herein.

INDEX

The index to the monthly catalogue is cumulative from January to June, and from July to November. The December number will contain an index to the twelve numbers for the year. Persons desiring to bind the catalogue at the end of the year should be careful to retain the numbers received monthly, as duplicate numbers can not be supplied.

SALES

The Superintendent of Documents is authorized to sell at cost any public document in his charge the distribution of which is not otherwise provided for. Only one copy is permitted to be sold to the same person, excepting libraries or schools and Members of Congress.

Price-lists of documents available for sale by the Superintendent of Documents will be supplied free on application in person or by mail.

PRICES

Documents entered in this catalogue that are for sale by the Superintendent of Documents are indicated by a (*) preceding the price named. The absence of a (*) indicates that application should be made to the Department, bureau, or division issuing the document.

HOW TO REMIT

Remittances may be made to the Superintendent of Documents, Union Building, Washington, D. C., by postal money order, express order, or New York draft. *Stamps* and *personal checks* will positively not be accepted. Remittances in coin or bills will be at sender's risk.

Remittances to the Public Printer should be made by postal money order, express money order, or draft on New York. Remittances to the Geological Survey should be made by money order. The Record and Pension Office will receive currency as well as postal money orders if the exact amount be sent.

The Hydrographic Office sells for 50c its "Catalogue of Charts, Plans, Sailing Directions, and other Publications." Other Government offices which have books, pamphlets, maps, or charts for sale issue price-lists, which will be sent free to all applicants. The prices charged are never more than cost and 10 per cent added, and frequently much less than that.

All public documents, from whatever Department or bureau they may be bought or procured, will be forwarded free of postage to all points in the United States, Canada, and Mexico. To other countries regular rates of postage are charged, and remittances must be made to include such postage.

WHERE DOCUMENTS MAY BE OBTAINED

General directions as to where documents may be procured are given in the body of the catalogue.

LAWS OF THE UNITED STATES

By act of Congress the sale of the Revised Statutes, Statutes at Large, and pamphlet laws has been transferred from the State Department to the Superintendent of Documents. The following are the prices at which the Revised Statutes and the recent Statutes at Large and pamphlet laws are sold. Prices will be furnished on application for Statutes at Large and pamphlet laws prior to the 55th Congress:

Revised Statutes, edition of 1878, sheep	\$2.90
Revised Statutes, supplement, vol. 1, edition of 1891, sheep	2.00
Revised Statutes, supplement, vol. 2, nos. 1-5, paper50
Revised Statutes, supplement, vol. 2, no. 6, paper15
Revised Statutes, supplement, vol. 2, no. 7, paper30
Revised Statutes, supplement, vol. 2, no. 8, paper75
Laws of 1st session, 55th Congress, 1897, paper35
Laws of 2d session, 55th Congress, 1897-98, paper95
Laws of 3d session, 55th Congress, 1898-99, paper	1.00
Statutes at Large, vol. 30, 55th Congress, 1897-99, sheep	3.00
Laws of 1st session, 56th Congress, 1899-1900, paper	1.10

Catalogue of Public Documents

Printed During the Month of July, 1901

Congress of United States

Congressional Record.

NOTE.—The bound volumes of the Record are sold by the Public Printer and the Superintendent of Documents, the price averaging about \$1.40 per part. The set containing the proceedings of the 2d session of the 56th Congress is in 4 parts and index and costs \$7.00.

Memorial addresses on Alfred C. Harmer. 1901. 88 pp. 1 por. large 8°
(H. doc. 525.)

Memorial addresses on William D. Daly. 1901. 59 pp. 1 por. large 8°
(H. doc. 522.)

LAWS

Statutes at Large, Dec. 1899–Mar. 1901, and recent treaties, conventions, executive proclamations, and concurrent resolutions; edited under direction of Secretary of State. 1901. v. 31, L + [1] + 2167 pp.

Sheep, \$3.15

NOTE.—The contents of this volume are the same as those of the Pamphlet or Session Laws, for the two sessions of the 56th Congress, but with a different arrangement. The laws, whether acts or joint resolutions, have been noted in this catalogue each month as separately published. See catalogues, December, 1899–June, 1900, and December, 1900–March, 1901. For lists of the treaties, conventions, proclamations, and concurrent resolutions, see the entries for the Session Laws ("Statutes Passed") in catalogues for August, 1900, pages 449, 450, and May, 1901, pages 273, 274.

SENATE

Standing rules for conducting business in Senate, with rules for regulation of Senate wing of Capitol, adopted by Committee on Rules. 1901. 69 pp.

DISTRICT OF COLUMBIA COMMITTEE

"Men on horseback," paper on equestrian statuary in Washington, read before Columbia Historical Society, by S. H. Kauffmann, Mar. 11, 1901. June 5, 1901. 16 pp. (Park improvement papers 8.)

Notes on establishment of national park in District and acquirement and improvement of valley of Rock Creek for park purposes; by William V. Cox. Apr. 19, 1901. 42 pp. 2 il. (Park improvement papers 7.)

FOREIGN RELATIONS COMMITTEE

Compilation of reports of committee, 1789-1901, 1st-56th Congress, claims of citizens of United States against foreign governments. 1901. v. 1, 2, [1] + 686 pp. map and xviii + 1061 pp. (S. doc. 231, pts. 1, 2.)

Contents:

- v. 1. [Miscellaneous.]
v. 2. La Abra Silver Mining Company.

HOUSE

Journal, 2d session, 56th Congress. 1901. 433 + 110 pp. 4°

NOTE.—The supply of the Senate and House journals for libraries is limited by law to 144 copies of each, to be distributed to 3 libraries in each State and Territory.

SHEEP-BOUND RESERVE

NOTE.—These volumes, which have been previously published in unbound form or in one or more cloth editions, are now for the first time ready for distribution in sheep binding. The number in black-faced type appended to the description of each volume is the serial number in the set of Congressional documents, in continuation of the system adopted in the Checklist of Public Documents issued by this office.

- 55th Congress, 3d session. House documents, v. 1. No. 1; President's message and foreign relations, 1898. [3743]
56th Congress, 1st session. Senate documents, v. 25. Nos. 236-257, except 237; 9th report on reindeer in Alaska, 1899; Tariff schedules in Cuba, Porto Rico, and Philippines; miscellaneous. [3867]
— Same, v. 26. Nos. 258-337, except 259, 270, 283, 290, 306; miscellaneous. [3868]
— House documents, v. 61. Nos. 106, 236; National Soldiers' Home report, 1899; Report of inspection, Sept.-Dec. 1899. [3958]
— Same, v. 65. No. 117; War of Rebellion, series 3, v. 1. [3962]
— Same, v. 74. No. 175, pts. 1, 4; American Republics Bureau report, 1899; Bulletin 94. [3971]
— Same, v. 79. Nos. 264-323, except 287, 298, 300, 314; Transactions with national banks; miscellaneous. [3976]
— Same, v. 91. Nos. 451-504, except 460, 476, 481, 496, 500; Reformatory system in U.S.; miscellaneous. [3988]
— Same, v. 92. No. 460, 3 pts.; Spanish-American war claims. [3989]
— Same, v. 99. No. 588; Yearbook of Department of Agriculture, 1899. [3996]
— Same, v. 107. No. 713; Labor Department, 14th annual report, 1899. [4004]
— Same, v. 114. No. 733; American Historical Association report, 1899, v. 1. [4011]
56th Congress, 2d session. House journal. See above, under House.

NOTE.—The binding of the volumes of the Congressional reserve is proceeding so rapidly that it is anticipated that some of the volumes for the 2d session of the 56th Congress will be ready for distribution before it is possible to assign serial numbers. In this case the serial numbers will not be announced until the publication of the schedule of volumes for the session.

President of United States

- Cascade Range forest reserve, 2d proclamation. [July 1, 1901.] 2 pp. f°
Cessation of tariff, Porto Rico [proclamation]. [July 25, 1901.] [2] pp. f°
Olympic forest reserve, 3d proclamation. [July 15, 1901.] 3 pp. f°

Opening lands ceded by Wichita, Comanche, Kiowa and Apache Indians, proclamation. [July 4, 1901.] 8 pp. f°

Wichita forest reserve, proclamation. [July 4, 1901.] [2] pp. f°

Agriculture, Department of

NOTE.—Those publications of the Department of Agriculture which are for sale, except those of the Weather Bureau, will be supplied by the Superintendent of Documents, Union Building, Washington, D. C. For the unpriced publications application should be made to the Secretary of Agriculture. The Department has no list of addresses to which all its publications are sent. It issues a monthly list of publications, which is mailed to all applicants, enabling them to select such reports and bulletins as interest them.

[Bureau of Animal Industry] order 80, amendment 14; regulations concerning cattle transportation, feeding station at Polk Stock Yards, Fort Worth, Tex. July 13, 1901. 1 p.

Progress of beet-sugar industry in United States in 1900. 1901. 178 pp. (Report 69.) *10c

NOTE.—Made up of reports by Division of Chemistry and Charles F. Saylor, special agent.

Statistical matter relating to principal crops and farm animals, transportation rates, etc., in United States, 1900; from Yearbook, 1900. [1901.] p. 753-861.

William Saunders, by [George William Hill] editor; from Yearbook, 1900. [1901.] p. 625-630, 1 por.

ACCOUNTS AND DISBURSEMENTS DIVISION

Use of annual appropriations [decision of comptroller of Treasury, reprinted for disbursing office of Department of Agriculture]. [1901.] 4 pp.

ANIMAL INDUSTRY BUREAU

American breeds of fowls, 1: plymouth rock; by T. F. McGrew. 1901. 32 pp. 10 il. 6 pl. (Bulletin 29.) *15c

Ducks and geese, standard breeds and management; by George E. Howard. 1897 [reprint 1901]. 48 pp. 37 il. (Farmers' bulletin 64.)

Hog raising in the South; by S. M. Tracy. 1899 [reprint 1901]. 40 pp. (Farmers' bulletin 100.)

Standard varieties of chickens; by George E. Howard. [3d edition.] Jan. 1899 [reprint 1901]. 48 pp. 42 il. (Farmers' bulletin 51.)

DAIRY DIVISION

Dairy products at Paris Exposition, 1900, by Henry E. Alvord; from Yearbook, 1900. [1901.] ii + 599-627 pp. 5 pl. ([Publication] 35.)

BIOLOGICAL SURVEY DIVISION

Food of nestling birds, by Sylvester D. Judd; from Yearbook, 1900. [1901.] iv + 411-436 pp. 9 il. 5 pl.

How birds affect the orchard, by F. E. L. Beal; from Yearbook, 1900. [1901.] ii + 291-304 pp. 5 il.

ENTOMOLOGY DIVISION

Bee keeping; by Frank Benton. 1897 [reprint 1901]. 32 pp. 19 il. (Farmers' bulletin 59.)

- Notes on mosquitoes of United States, account of their structure and biology with remarks on remedies; by L. O. Howard. 1900 [reprint 1901]. 70 pp. 22 il. (Bulletin 25, new series.) *5c
- Principal household insects of United States, by L. O. Howard and C. L. Marlatt; with chapter on insects affecting dry vegetable foods, by F. H. Chittenden. 1896 [1899, reprint 1901]. 131 pp. 64 il. (Bulletin 4, new series, revised edition.) *10c
- Scale insect and mite enemies of citrus trees, by C. L. Marlatt; from Yearbook, 1900. [1901.] iv + 247-290 pp. 25 il. 6 pl.
- Smyrna fig culture in United States, by L. O. Howard; from Yearbook, 1900. [1901.] iv + 79-106 pp. 7 il. 8 pl.

EXPERIMENT STATIONS OFFICE

- Development of trucking interests, by F. S. Earle; from Yearbook, 1900. [1901.] iii + 437-452 pp.
- Effect of severe and prolonged muscular work on food consumption, digestion, and metabolism, by W. O. Atwater and H. C. Sherman; and Mechanical work and efficiency of bicyclers, by R. C. Carpenter. 1901. 67 pp. 3 il. (Bulletin 98.) *5c
- Experiment Station Record, v. 12, no. 11. 1901. vii + 1001-1100 pp. 10c single copy, \$1.00 a volume (12 nos.)
- NOTE.—Mainly made up of abstracts of reports and publications on agricultural science which have recently appeared in all countries, especially the United States.
- Experiment Station Work 11. 1899 [reprint 1901]. 32 pp. 5 il. (Farmers' bulletin 103.) [See, for contents, catalogue for September, 1899, page 418.]
- Same, 13. 1899 [reprint 1901]. 32 pp. 3 il. (Farmers' bulletin 107.) [See, for contents, catalogue for January, 1900, page 51.]
- Practical irrigation, by C. T. Johnston and J. D. Stannard; from Yearbook, 1900. [1901.] ii + 491-512 pp. 9 il. ([Publication] 397.)
- Proceedings of 14th annual convention of Association of American Agricultural Colleges and Experiment Stations, New Haven and Middletown, Conn., Nov. 13-15, 1900; edited by A. C. True, W. H. Beal, and H. H. Goodell. 1901. 192 pp. 3 pl. (Bulletin 99.) *15c

Contents:

- Agricultural and mechanical college, Relation of, to State; by W. E. Drake.
- Agricultural experiment stations, American; by W. H. Jordan.
- Agricultural literature, Report of committee on indexing.
- Agriculture, Report of committee on methods of teaching.
- University extension in, at Cornell University; by J. Craig.
- Agriculture, Department of, and experiment stations, Report of committee on co-operative work between.
- Artace punctistriga, Some observations upon; by H. A. Morgan.
- Asparagus, Power sprayer for; by F. A. Serrine.
- Asparagus pest, *agromyza simplex* Loew, Little-known; by F. A. Serrine.
- Bibliographer, report.
- Botanist, station, Function of, by G. E. Stone.
- Cigar-wrapper leaf, Methods of experimenting with; by E. H. Jenkins.
- Connecticut Experiment Station; by W. O. Atwater.
- Constitution, Report of committee on revision of.
- Dairy-herd tests, Cooperative; by C. S. Phelps.
- Education, modern, What is of most worth in; by J. E. Stubbs.
- at land-grant colleges, General drift of; by J. K. Patterson.
- Engineering experiment stations, Report of committee on.
- Entomology, Economic, in Florida; by H. A. Gossard.
- in southern States; by H. Garman.
- Entomology Section, report.
- Experiment-station work, Progress of variety testing in; by F. W. Rane.
- Fertilizer laws, uniform, Report of standing committee on.
- Field experiments, Cooperative; by E. B. Voorhees.
- Food and body material, Available energy of; by W. O. Atwater.
- Graduate study, Report of committee on, at Washington [D.C.].
- Grass and forage-plant investigations in Department of Agriculture and State experiment stations; by T. A. Williams.

Proceedings of 14th annual convention of Association of American Agricultural Colleges and Experiment Stations, etc.—Continued.

Contents—Continued.

- Horticulture, Educational status of; by F. W. Card.
 — Laboratory work in; by E. S. Goff.
 Horticulture and Botany Section, report.
 Hydrocyanic-acid gas for destruction of insects in large buildings, Recent results with; by W. G. Johnson.
 Mechanic arts, Student of, an apprentice; by J. D. Hoffman.
 Mechanic Arts Section, report.
 Mechanical drawing, Course of instruction in; by L. S. Randolph.
 Military instruction in land-grant colleges, Report of committee on.
 Morrill, Justin S., Legislative career of; by G. W. Atherton.
 Nursery and orchard inspection, Experiences in; by W. G. Johnson.
 Nursery inspection; by J. B. Smith.
 Nursery inspection and orchard insecticide work in Illinois; by S. A. Forbes.
 Nursery inspection laws and rulings, Suggestions toward greater uniformity in; by E. P. Felt.
 Paris Exposition, Report of committee on collective station exhibit at.
 Petroleum, crude, and its effects upon plants and insects, Notes on; by J. B. Smith.
 Plant physiology in relation to horticulture and agriculture; by A. F. Woods.
 Plants, What our experiment stations have done in originating varieties of, by crossing, selecting, etc. [abstract]; by D. B. Halsted.
 President's address; by J. E. Stubbs.
 Scale insects, Injurious, Danger to American horticulture from introduction of; by G. B. King.
 Seed and plant introduction; by J. G. Smith.
 [Sugar and sugar-beet production], our new agricultural industry; by I. P. Roberts.
 Tobacco, Burley, its growing and curing; by M. A. Seovell.
 [Tobacco investigations of Department of Agriculture]; by Milton Whitney.
 Treasurer, report.
 Trees, Observations on banding of, to prevent injury by fall cankerworm; by W. E. Britton.
 Vegetation house arranged for pot experiments; by W. E. Britton.
 Sheep feeding; by John A. Craig. Feb. 1897 [reprint 1901]. 24 pp. (Farmers' bulletin 49.)
 Value of potatoes as food, by C. F. Langworthy; from Yearbook, 1900. [1901.] iii + 337-348 pp. 3 il. ([Publication] 398.)

PLANT INDUSTRY BUREAU

AGROSTOLOGY DIVISION

List of publications of division. [June 12, 1901.] 8 pp. (Circular 36.)

BOTANY DIVISION

- Contributions from U. S. National Herbarium, v. 6, plant life of Alabama, account of distribution, modes of association, and adaptations of flora of Alabama, with systematic catalogue of plants growing in State; prepared in cooperation with Geological Survey of Alabama by Charles Mohr. July 31, 1901. 921 pp. 12 pl. map. *50c
 Some poisonous plants of northern stock ranges, by V. K. Chesnut; from Yearbook, 1900. [1901.] iii + 305-324 pp. 4 il. 3 pl.
 Testing commercial varieties of vegetables, by W. W. Tracy, jr.; from Yearbook, 1900. [1901.] iii + 543-550 pp.

VEGETABLE PHYSIOLOGY AND PATHOLOGY DIVISION

- New wheat industry [macaroni wheat] for semiarid west. [June 28, 1901.] 8 pp. 2 il. (Circular 18.)
 Spraying for fruit diseases; by B. T. Galloway. 1896 [reprint 1901]. 12 pp. 6 il. (Farmers' bulletin 38.)
 Successful wheat growing in semiarid districts, by Mark Alfred Carleton; from Yearbook, 1900. [1901.] ii + 529-542 pp. 4 pl.

PUBLIC ROAD INQUIRIES OFFICE

Mountain roads, by James W. Abbott; from Yearbook, 1900. [1901.]
iii + 183-198 pp. 2 il. 3 pl.

PUBLICATIONS DIVISION

Monthly list of publications [of Department of Agriculture], July, 1901.
4 pp. ([Publication] 417.)

SEED AND PLANT INTRODUCTION SECTION

Commercial plant introduction, by Jared G. Smith; from Yearbook,
1900. [1901.] ii + 131-144 pp.

STATISTICS DIVISION

Crop Reporter, v. 3, no. 3; July, 1901. 8 pp. 4° [Monthly.]

FOREIGN MARKETS SECTION

Our trade with Scandinavia, 1890-1900; by Frank H. Hitchcock. 1901.
124 pp. (Bulletin 22.) *10c

WEATHER BUREAU

NOTE.—For these publications application should be made to the Chief of the
Weather Bureau.

Climate and Crop Bulletin, July 1-29, 1901; nos. 16-20 [1901]. 24 × 19
in. [Weekly Apr.-Sept., monthly remainder of year.]

NOTE.—Contains reports of temperature and rainfall, with special reference to
their effect on crops.

Weather Bureau. 1901. 15 pp. 1 il. 24°

Weather map, July 1-31, 1901. 19 × 24 in. [Daily.]

Weather map, Pan-American Exposition. [1901.] 19 × 24 in.

Interior Department

NOTE.—The Decisions of the Department of the Interior in pension cases are
issued in slips and in signatures, and the Decisions in land cases are issued in
signatures, both being published later in bound volumes at prices ranging from
\$1.05 to \$1.45 per volume. Subscribers may deposit \$1.00 in the Department and
receive the contents of a volume of the Decisions of either kind in separate parts
as they are issued. Of the Land Decisions usually two volumes are issued yearly,
while the Pension-Decision volumes appear at longer intervals, sometimes more
than two years apart.

Annual reports, 1900; 21st annual report of Geological Survey, pt. 6, 2 v.
[See Geological Survey.]

Decisions [in appealed pension and bounty land claims] v. 11, [signa-
tures] 20-24, published separately. p. 305-384. [Contents are the
same as those of slips 87-105, for which see catalogues for April,
May, and June, 1901.]

Same, [v. 11, slips] 109-123, published separately.

Contents:

Attorneys; material service; declarations; increase. No. 117. June 29, 1901. 3 pp.
Attorneyship; recognition. No. 114. June 25, 1901. 2 pp.
Commencement; act June 27, 1890; minor's pension. No. 118. June 29, 1901. 5 pp.
Death cause; pathological [pathological] sequence; discharge; act June 27, 1890.
No. 121. July 10, 1901. 4 pp.
Evidence; weight of evidence; presumption of prior service. No. 120. July 10,
1901. 3 pp.

Decisions [in appealed pension and bounty land claims], etc.—Cont'd.

Contents—Continued.

- Jurisdiction; declaration; evidence; filing. No. 113. June 25, 1901. 3 pp.
- decree; evidence; divorce. No. 111. June 22, 1901. 4 pp.
- Marriage; colored persons; emancipation proclamation. No. 122. July 10, 1901. 5 pp.
- evidence; presumptions; cohabitation and repute. No. 116. June 29, 1901. 3 pp.
- void marriage; estoppel. No. 110. Apr. 30, 1901. 4 pp.
- Minor's pension; construction 3d sec. act June 27, 1890. No. 123. July 10, 1901. 4 pp.
- Navy pensions; sec. 4756, 4757, and 4813, R. S. No. 112. June 25, 1901. 10 pp.
- Reimbursement; accrued pension; fraud and mistake. No. 109. May 6, 1901. 9 pp.
- Service; act June 27, 1890; absence. No. 119. June 29, 1901. 3 pp.
- Special act; commencement; rank; sec. 4702, R. S. No. 115. June 29, 1901. 4 pp.

Decisions [of Department and General Land Office] relating to public lands, v. 30, [signatures] 37, 38, published separately. p. 577-608.

Contents:

- Final proof; school sections; notice, p. 607.
- Forest reserves; paragraph 21 of rules and regulations of Apr. 4, 1900, amended, p. 590.
- Fort Fetterman military reservation; right to purchase pasture and grazing land, p. 601.
- Indian lands; allotment; citizenship, p. 606.
- Lieu selections under act of June 4, 1897, p. 583.
- Railroad grant; act of Mar. 3, 1875, p. 591.
- adjustment; act of July 1, 1898, p. 594, 602.
- Right of way; Indian reservation; acts of Mar. 3 and Feb. 15, 1901, p. 588.
- station grounds; sec. 2, act of Mar. 2, 1899, p. 599.
- School lands; forest reservation; lieu selection, p. 608.
- Soldiers' additional homestead; assignment, p. 604.

Proceedings in matter of proposed consolidation of San Francisco Mountains forest reserves, Ariz. 1901. 83 pp. 1 pl.

CENSUS OFFICE

Census bulletin 66-78 [12th census]. 4°

Contents:

- Agriculture, Arizona. No. 68. July 29, 1901. 12 pp. 1 il.
- Boundaries of territorial acquisitions, Report on. No. 74. July 20, 1901. 4 pp. map.
- Manufactures, Arizona, New Mexico, Indian Territory, and Oklahoma. No. 71. July 24, 1901. 15 pp.
- Delaware. No. 69. June 27, 1901. 11 pp.
- Idaho, Nevada, and Wyoming. No. 73. July 23, 1900 [1901]. 13 pp.
- Population, Urban, in 1900. No. 70. July 11, 1901. 14 pp.
- Population by sex, general nativity, and color, Alabama, Alaska, Arizona, Arkansas, California, Colorado, and Connecticut. No. 66. June 24, 1901. 11 pp.
- Delaware, District of Columbia, Florida, Georgia, Hawaii, Idaho, and Illinois. No. 72. July 13, 1901. 10 pp.
- Indiana, Indian Territory, Iowa, and Kansas. No. 76. July 22, 1901. 10 pp.
- Kentucky, Louisiana, Maine, Maryland, and Massachusetts. No. 78. July 30, 1901. 12 pp.
- School, militia, and voting ages, Alabama, Alaska, Arizona, Arkansas, California, Colorado, and Connecticut. No. 67. June 28, 1901. 21 pp.
- Delaware, District of Columbia, Florida, Georgia, Hawaii, Idaho, and Illinois. No. 75. July 20, 1901. 22 pp.
- Indiana, Indian Territory, Iowa, and Kansas. No. 77. July 27, 1901. 21 pp.

GENERAL LAND OFFICE

Circular, persons not qualified to make homestead entry in Wichita and Kiowa, Comanche and Apache ceded lands. July 5, 1901. 1 p.

Homestead rights of soldiers and sailors of Spanish war and Philippine insurrection, act of Mar. 1, 1901, instructions, [circular] C [to] registers and receivers. June 21, 1901. 4 pp.

Opening of Kiowa, Comanche, Apache, and Wichita Indian lands in Oklahoma. [1901.] 29 pp.

Regulations concerning permission to use right of way over public lands, forest and other reservations and Yosemite, Sequoia, and General Grant national parks for telegraph and telephone lines, electrical plants, canals, reservoirs, tramroads, etc. July 8, 1901. 9 pp.

Regulations under act of Mar. 2, 1901, extending provisions of act of July 1, 1898, to certain claims to lands within indemnity limits of Northern Pacific land grant. June 15, 1901. [2] pp.

[Schedule of lands in El Reno land district, Okla., subject to disposition under President's proclamation of July 4, 1901.] July 17, 1901. 19 pp.

[Schedule of lands in Lawton land district, Okla., subject to disposition under President's proclamation of July 4, 1901.] July 17, 1901. 10 pp.

Maps

NOTE.—The General Land Office publishes a large general map of the United States, which is sold at 80 cents; and also separate maps of the States and Territories in which public lands are to be found, which are sold at 12 cents per sheet. California, Florida, and Alaska are in 2 sheets each. Address the chief clerk of the Department of the Interior.

Map of Kiowa, Comanche and Apache Reservation, Okla., showing lands to be opened for entry Aug. 6, 1901, under proclamation of President, July 4, 1901. Scale 1 m. = 0.4 in. Preliminary edition. [1901.] 29.3 × 30.5 in.

Map of Wichita Reservation, Okla., showing lands to be opened for entry Aug. 6, 1901, under proclamation of President, July 4, 1901. Scale 1 m. = 0.5 in. Preliminary edition. [1901.] 24.4 × 22.2 in.

GEOLOGICAL SURVEY

NOTE.—The publications of the United States Geological Survey include annual reports and Water-supply and Irrigation Papers, which are intended for free distribution; and Monographs, Bulletins, and folios of the Geologic Atlas of the United States, which are sold at prices ranging from 5c to \$11.00 each. Address the Director of the Geological Survey, Washington. For topographic sheets see next page.

Geologic atlas of United States, La Plata folio, Colo. Library edition. 1899 [1901]. 14 pp. 3 pl. 4 maps, 1 tab. large 4° (Folio 60.) 25c

Same, Spanish Peaks folio, Colo. Library edition. 1901. 7 pp. 2 il. 1 pl. 2 pp. of pl. 6 maps, large 4° (Folio 71.) 25c

Same, Washington folio, D. C., Md.-Va. Library edition. 1901. 7 pp. 1 il. 5 maps, large 4° (Folio 70.) 50c

Graphite. Production of graphite in 1900, by Joseph Hyde Pratt; from Mineral Resources, calendar year 1900. 1901. 11 pp.

Philippine Islands. Report on geology of Philippine Islands [with bibliography], by George F. Becker, followed by version of Ueber tertiäre fossilien von den Philippinen, 1895, by K. Martin; from 21st report, pt. 3. 1901. 139 pp. 2 il. 1 pl. 2 maps, large 8°

Publications. Catalogue and index of publications of survey, 1880-1901; by Philip Creveling Warman. 1901. 858 pp. (Bulletin 177; H. doc. 535.)

Report. 21st annual report, 1900, Charles D. Walcott, director; pt. 6, Mineral Resources, [calendar year] 1899, [v. 1] metallic products, coal, and coke, David T. Day, chief of division. 1901. viii + 656 pp. large 8° (Interior Dept., Reports, 1900; H. doc. 5.) *\$1.00

Contents:

Aluminum and bauxite.

Antimony; by E. W. Parker.

Coal; by E. W. Parker.

Coke; by E. W. Parker.

Copper; by Charles Kirchhoff.

Gold and silver.

Iron ores; by John Birkinbine.

Iron trades, American and foreign, in 1899; by J. M. Swank.

Lead; by Charles Kirchhoff.

Manganese ores; by John Birkinbine.

Report. 21st annual report, 1900, etc.—Continued.

Contents—Continued.

Nickel and cobalt.

Quicksilver; by E. W. Parker.

Tungsten, molybdenum, uranium, and vanadium; by J. H. Pratt.

Tungsten ore, Occurrence of, in eastern Nevada; by F. B. Weeks.

Zinc; by Charles Kirchhoff.

— Same, pt. 6 continued, [v. 2] nonmetallic products, except coal and coke. 1901. viii + 634 + xi pp. 1 il. large 8° (Interior Dept., Reports, 1900; H. doc. 5.) *\$1.00

Contents:

Abrasive materials; by E. W. Parker.

Asbestos; by E. W. Parker.

Asphaltum and bituminous rock; by E. W. Parker.

Barytes; by E. W. Parker.

Cement, American rock; by Uriah Cummings.

— Portland; by S. B. Newberry.

Clay.

Clays and clay products at Paris Exposition, 1900; by Heinrich Ries.

Feldspar and quartz; by Heinrich Ries.

Fluorspar; by E. W. Parker.

Fuller's earth.

Gas, Natural; by F. H. Oliphant.

Graphite.

Gypsum; by E. W. Parker.

Mica.

Mineral paints; by E. W. Parker.

Mineral waters; by A. C. Peale.

Petroleum; by F. H. Oliphant.

Phosphate rock; by E. W. Parker.

Precious stones; by G. F. Kunz.

Salt; by E. W. Parker.

Soapstone; by E. W. Parker.

Stone.

Sulphur and pyrite; by E. W. Parker.

Tin. Occurrence of stream tin in York region, Alaska, by Alfred H. Brooks; from Mineral Resources, calendar year 1900. 1901. 8 pp.

Topographic sheets

NOTE.—The Geological Survey is making a topographic map of the United States. The sheets of which it is composed are projected without reference to political divisions, and are designated by some prominent feature found on them.

Three scales are used, 1:62,500, 1:125,000, and 1:250,000. These correspond, approximately, to 1 mile, 2 miles, and 4 miles to 1 linear inch on the map. The size, unless otherwise given, is about 17.5 inches in height by 11.5 to 16 inches in width, exclusive of the margin, the width varying with the latitude. A description of the topographic map is printed on the reverse of each sheet catalogued below.

About one-fifth of the area of the country has been mapped, nearly every State being represented. Massachusetts, Connecticut, Rhode Island, New Jersey, and the District of Columbia are completely mapped. Sheets of the regular size are sold by the Survey at 5c each; but in lots of 100 or more copies, whether of the same sheet or of different sheets, the price is 2c each.

Arkansas, Marshall quadrangle, lat. 35° 30'–36°, long. 92° 30'–93°. Scale 1:125,000, contour interval 50 ft. Edition of June, 1901.

California, Elcayon quadrangle, lat. 32° 45'–33°, long. 116° 45'–117°. Scale 1:62,500, contour interval 25 ft. Edition of Apr. 1901.

California, Escondido quadrangle, lat. 33°–33° 15', long. 117°–117° 15'. Scale 1:62,500, contour interval 25 ft. Edition of Apr. 1901.

California, Haywards quadrangle, lat. 37° 30'–37° 45', long. 122°–122° 15'. Scale 1:62,500, contour interval 25 ft. Edition of Jan. 1899, reprinted June, 1901.

California, Shasta special map, lat. 41° 15'–41° 30', long. 122° 5'–122° 20'. Scale 1:62,500, contour interval 100 ft. Edition of Nov. 1897, reprinted June, 1901.

Idaho, Sandpoint quadrangle, lat. 48°–48° 30', long. 116° 30'–117°. Scale 1:125,000, contour interval 100 ft. Edition of May, 1901.

Illinois, Hennepin sheet, lat. 41° 15'–41° 30', long. 89° 15'–89° 30'. Scale 1:62,500, contour interval 10 ft. Edition of May, 1893, reprinted Apr. 1901.

- Indian Territory, Addington quadrangle, lat. 34° - 34° 30', long. 97° 30'- 98° . Scale 1:125,000, contour interval 50 ft. Edition of June, 1901.
- Indian Territory, Alikchi quadrangle, lat. 34° - 34° 30', long. 95° - 95° 30'. Scale 1:125,000, contour interval 50 ft. Edition of May, 1901.
- Indian Territory, Antlers quadrangle, lat. 34° - 34° 30', long. 95° 30'- 96° . Scale 1:125,000, contour interval 50 ft. Edition of June, 1901.
- Indian Territory, Claremore quadrangle, lat. 36° - 36° 30', long. 95° 30'- 96° . Scale 1:125,000, contour interval 50 ft. Edition of May, 1901.
- Indian Territory, Nowata quadrangle, lat. 36° 30'- 37° , long. 95° 30'- 96° . Scale 1:125,000, contour interval 50 ft. Edition of May, 1901.
- Indian Territory, Pryor quadrangle, lat. 36° - 36° 30', long. 95° - 95° 30'. Scale 1:125,000, contour interval 50 ft. Edition of May, 1901.
- Indian Territory, Tishomingo quadrangle, lat. 30° - 34° 30', long. 96° 30'- 97° . Scale 1:125,000, contour interval 50 ft. Edition of May, 1901.
- Kansas, Sedan sheet, lat. 37° - 37° 30', long. 96° - 96° 30'. Scale 1:125,000, contour interval 50 ft. Edition of Feb. 1889, reprinted May, 1901.
- Kentucky-Virginia-Tennessee, Estillville sheet, lat. 36° 30'- 37° , long. 82° 30'- 83° . Scale 1:125,000, contour interval 100 ft. Edition of Mar. 1894, reprinted May, 1901.
- Maryland, Chestertown quadrangle, lat. 39° - 39° 15', long. 76° - 76° 15'. Scale 1:62,500, contour interval 20 ft. Edition of July, 1901.
- Maryland, Prince Frederick quadrangle, lat. 38° 30'- 38° 45', long. 76° 30'- 76° 45'. Scale 1:62,500, contour interval 20 ft. Edition of June, 1901.
- Maryland, Sharps Island sheet, lat. 38° 30'- 38° 45', long. 76° 15'- 76° 30'. Scale 1:62,500, no contour interval. Edition of Apr. 1893, reprinted May, 1901.
- Massachusetts, Framingham sheet, lat. 42° 15'- 42° 30', long. 71° 15'- 71° 30'. Scale 1:62,500, contour interval 20 ft. Edition of Mar. 1894, reprinted June, 1901.
- Montana, Great Falls sheet, lat. 47° - 48° , long. 111° - 112° . Scale 1:250,000, contour interval 200 ft. Edition of Jan. 1886, reprinted May, 1901.
- Nevada, Wabuska sheet, lat. 39° - 39° 30', long. 119° - 119° 30'. Scale 1:125,000, contour interval 100 ft. Edition of Sept. 1894, reprinted May, 1901.
- New Jersey-Pennsylvania-Delaware, Camden quadrangle, lat. 39° 30'- 40° , long. 75° - 75° 30'. Scale 1:125,000, contour interval 20 ft. Edition of June, 1901.
- New York, Elizabethtown quadrangle, lat. 44° - 44° 15', long. 73° 30'- 73° 45'. Scale 1:62,500, contour interval 20 ft. Edition of Mar. 1901.
- New York, Syracuse quadrangle, lat. 43° - 43° 15', long. 76° - 76° 15'. Scale 1:62,500, contour interval 20 ft. Edition of July, 1898, reprinted July, 1901.
- North Carolina, Wilkesboro sheet, lat. 36° - 36° 30', long. 81° - 81° 30'. Scale 1:125,000, contour interval 100 ft. Edition of June, 1891, reprinted June, 1901.
- Oregon-Washington, Portland quadrangle, lat. 45° 30'- 45° 45', long. 122° 30'- 122° 45'. Scale 1:62,500, contour interval 25 ft. Edition of Nov. 1897, reprinted June, 1901.
- Pennsylvania, Pinegrove sheet, lat. 40° 30'- 40° 45', long. 76° 15'- 76° 30'. Scale 1:62,500, contour interval 20 ft. Edition of Feb. 1892, reprinted June, 1901.
- Pennsylvania, Pottsville sheet, lat. 40° 30'- 40° 45', long. 76° - 76° 15'. Scale 1:62,500, contour interval 20 ft. Edition of Oct. 1891, reprinted May, 1901.

- South Carolina, Pickens sheet, lat. $34^{\circ} 30' - 35^{\circ}$, long. $82^{\circ} 30' - 83^{\circ}$. Scale 1:125,000, contour interval 100 ft. Edition of Aug. 1894, reprinted May, 1901.
- South Dakota, Harney Peak quadrangle, lat. $43^{\circ} 30' - 44^{\circ}$, long. $103^{\circ} 30' - 104^{\circ}$. Scale 1:125,000, contour interval 100 ft. Edition of June, 1901.
- Tennessee-North Carolina, Murphy sheet, lat. $35^{\circ} - 35^{\circ} 30'$, long. $84^{\circ} - 84^{\circ} 30'$. Scale 1:125,000, contour interval 100 ft. Edition of Oct. 1893, reprinted Apr. 1901.
- Utah, Bingham mining map. Scale 1:20,000, contour interval 50 ft. Edition of July, 1901. 19×12.7 in.
- Utah, San Rafael sheet, lat. $38^{\circ} - 39^{\circ}$, long. $110^{\circ} - 111^{\circ}$. Scale 1:250,000, contour interval 250 ft. Edition of Dec. 1885, reprinted May, 1901.
- Utah, Uinta sheet, lat. $40^{\circ} - 41^{\circ}$, long. $110^{\circ} - 111^{\circ}$. Scale 1:250,000, contour interval 250 ft. Edition of Dec. 1885, reprinted June, 1901.
- Virginia, Farmville sheet, lat. $37^{\circ} - 37^{\circ} 30'$, long. $78^{\circ} - 78^{\circ} 30'$. Scale 1:125,000, contour interval 50 ft. Edition of Apr. 1893, reprinted May, 1901.
- Virginia, Harrisonburg sheet, lat. $38^{\circ} - 38^{\circ} 30'$, long. $78^{\circ} 30' - 79^{\circ}$. Scale 1:125,000, contour interval 100 ft. Edition of Mar. 1892, reprinted May, 1901.
- Virginia, Richmond sheet, lat. $37^{\circ} 30' - 37^{\circ} 45'$; long. $77^{\circ} 15' - 77^{\circ} 30'$. Scale 1:62,500, contour interval 20 ft. Edition of Sept. 1895, reprinted May, 1901.
- Washington, Glacier Peak quadrangle, lat. $48^{\circ} - 48^{\circ} 30'$, long. $121^{\circ} - 121^{\circ} 30'$. Scale 1:125,000, contour interval 100 ft. Edition of May, 1901.
- Washington, Stilaguamish quadrangle, lat. $48^{\circ} - 48^{\circ} 30'$, long. $121^{\circ} 30' - 122^{\circ}$. Scale 1:125,000, contour interval 100 ft. Edition of May, 1901.
- Washington-Idaho, Spokane quadrangle, lat. $47^{\circ} 30' - 48^{\circ}$, long. $117^{\circ} - 117^{\circ} 30'$. Scale 1:125,000, contour interval 100 ft. Edition of May, 1901.
- West Virginia, Kanawha Falls quadrangle, lat. $38^{\circ} - 38^{\circ} 30'$, long. $81^{\circ} - 81^{\circ} 30'$. Scale 1:125,000, contour interval 100 ft. Edition of June, 1901.
- West Virginia-Kentucky, Warfield sheet, lat. $37^{\circ} 30' - 38^{\circ}$, long. $82^{\circ} - 82^{\circ} 30'$. Scale 1:125,000, contour interval 100 ft. Edition of Mar. 1891, reprinted May, 1901.
- Wisconsin, Shopiere sheet, lat. $42^{\circ} 30' - 42^{\circ} 45'$, long. $88^{\circ} 45' - 89^{\circ}$. Scale 1:62,500, contour interval 20 ft. Edition of Sept. 1893, reprinted May, 1901.
- Wyoming, Grand Teton quadrangle, lat. $43^{\circ} 30' - 44^{\circ}$, long. $110^{\circ} 30' - 111^{\circ}$. Scale 1:125,000, contour interval 100 ft. Edition of Apr. 1901.
- Yellowstone National Park-Wyoming, Shoshone quadrangle, lat. $44^{\circ} - 44^{\circ} 30'$, long. $110^{\circ} 30' - 111^{\circ}$. Scale 1:125,000, contour interval 100 ft. Edition of Apr. 1901.

HYDROGRAPHY DIVISION

- Operations at river stations, [calendar year] 1900, report. 1901. pts. 2-4, p. 105-387. (Water-supply and irrigation papers 48-50; H. doc. 532-534.) Each 10c
- Physical characteristics of Kern River, Cal., by Frank H. Olmsted; and Reconnaissance of Yuba River, Cal., by Marsden Manson. 1901. 57 pp. 18 il. 7 pl. map. (Water-supply and irrigation papers 46; H. doc. 530.) *10c

PATENT OFFICE

NOTE.—The Patent Office publishes specifications and drawings of patents, both in single copies and monthly volumes, the former at 5c and the latter at \$5.00. The former are not enumerated in this catalogue. For certified copies of patents, including specification, drawing, certificate, and grant, the price is 80c. A variety of indexes, giving a complete view of the work of the office from 1790 to date, are published at prices ranging from 25c to \$10.00 per volume. The Rules of Practice and pamphlet Patent Laws are furnished free. The Patent Office issues coupon orders in packages of 20 at \$1.00 per package, or in books containing 100 coupons at \$5.00 per book. One coupon will procure a specification with drawings, and two coupons a copy of the Official Gazette. They are good until used. Address Chief Clerk, Patent Office.

Alphabetical lists of patentees and inventions for quarter ending Mar. 31, 1901. 234 pp. large 8° [Index to v. 94 of Official Gazette.]

Annual report of commissioner [to Congress, with indexes to patentees, inventions, etc., calendar] year 1900. 1901. xii + 894 pp. large 8° (S. doc. 138.)

Decisions of commissioner of patents and of United States courts in patent and trade-mark cases; compiled from Official Gazette of Patent Office, [calendar] year 1900. 1901. viii + 464 pp. il. (H. doc. 518.)

Official Gazette, July 2-30, 1901; v. 96, nos. 1-5. 1-1040 + [cvii] pp. il. large 8° [Weekly.] 10c single copy, \$5.00 a yr

NOTE.—Contains the patents, trade-marks, designs, and labels issued each week; also decisions of the Commissioner of Patents and of United States courts in patent cases.

Same, supplement to v. 95, containing classification of subjects of invention [no. 3], revised and published Jan.-June, 1901. June 25, 1901. p. 2687-2707, large 8°

Same, title-page, errata, index to decisions, etc., to v. 94. 1901. [7] + xiv pp. large 8°

Specifications and drawings of patents issued July, 1897; [v. 302] patents 585,645-587,291; reissues 11,619-11,623. 1897 [1901]. 2 pts. [lvii] + 3024 + [1] pp. + 712 pp. of figures, 1 pl. large 8°

Same, Aug. 1897; [v. 303] patents 587,292-589,399; reissues 11,624-11,627. 1897 [1901]. 2 pts. [lxxiii] + 3888 + [1] pp. + 912 pp. of figures, 1 pl. large 8°

Same, Sept. 1897; [v. 304] patents 589,400-590,949; reissues 11,628-11,630. 1897 [1901]. 2 pts. [liii] + 2695 + [1] pp. + 640 pp. of figures, 1 pl. large 8°

Same, Oct. 1897; [v. 305] patents 590,950-592,752; reissues 11,631-11,634. 1897 [1901]. 2 pts. [lxi] + 3522 + [1] pp. + 744 pp. of figures, 1 pl. large 8°

Same, Nov. 1897; [v. 306] patents 592,753-594,840; reissues 11,635-11,639. 1897 [1901]. 2 pts. [lxix] + 3774 + [1] pp. + 880 pp. of figures, 1 pl. large 8°

Same, Dec. 1897; [v. 307] patents 594,841-596,466; reissues 11,640-11,645. 1898 [1901]. 2 pts. [lv] + 2848 + [1] pp. + 672 pp. of figures, 1 pl. large 8°

Same, Jan. 1898; v. 308, patents 596,467-598,068; reissue 11,646. 1898 [1901]. 2 pts. [lv] + 2779 + [1] pp. + 648 pp. of figures, 1 pl. large 8°

Same, Feb. 1898; v. 309, patents 598,069-599,675; reissues 11,647-11,651. 1898 [1901]. 2 pts. [lv] + 2838 + [1] pp. + 664 pp. of figures, 1 pl. large 8°

Same, Mar. 1898; v. 310, patents 599,676-601,622; reissues 11,652-11,658. 1898 [1901]. 2 pts. [lxv] + 3544 + [1] pp. + 808 pp. of figures, 1 pl. large 8°

Same, Apr. 1898; v. 311, patents 601,623-603,242; reissues 11,659-11,661. 1898 [1901]. 2 pts. [lv] + 2858 + [1] pp. + 656 pp. of figures, 1 pl. large 8°

- Same, May, 1898; v. 312, patents 603,243-605,066; reissues 11,662-11,667. 1898 [1901]. 2 pts. [lxiii] + 3335 + [1] pp. + 768 pp. of figures, 1 pl. large 8°
- Same, June, 1898; v. 313, patents 605,067-606,636; reissues 11,668-11,675. 1898 [1901]. 2 pts. [lv] + 2981 + [1] pp. + 696 pp. of figures, 1 pl. large 8°
- Same, July, 1898; v. 314, patents 606,637-608,165; reissues 11,676-11,685. 1898 [1901]. 2 pts. [liii] + 3019 + [1] pp. + 656 pp. of figures, 1 pl. large 8°
- Same, Aug. 1898; v. 315, patents 608,166-610,160; reissues 11,686-11,690. 1898 [1901]. 2 pts. [lxvii] + 3646 + [1] pp. + 848 pp. of figures, 1 pl. large 8°
- Same, Sept. 1898; v. 316, patents 610,161-611,594; reissues 11,691-11,696. 1898 [1901]. 2 pts. [li] + 2687 + [1] pp. + 624 pp. of figures, 1 pl. large 8°
- Same, Oct. 1898; v. 317, patents 611,595-613,225; reissues 11,697-11,700. 1898 [1901]. 2 pts. [lvii] + 2894 + [1] pp. + 688 pp. of figures, 1 pl. large 8°
- Same, Nov. 1898; v. 318, patents 613,226-615,231; reissues 11,701-11,704. 1898 [1901]. 2 pts. [lxix] + 3681 + [1] pp. + 848 pp. of figures, 1 pl. large 8°
- Same, Dec. 1898; v. 319, patents 615,232-616,870; reissue 11,705. 1899 [1901]. 2 pts. [lix] + 3131 + [1] pp. + 728 pp. of figures, 1 pl. large 8°
- Same, Jan. 1899; v. 320, patents 616,871-618,817; reissues 11,706-11,714. 1899 [1901]. 2 pts. [lxii] + 3706 + [1] pp. + 832 pp. of figures, 1 pl. large 8°
- Same, Feb. 1899; v. 321, patents 618,818-620,557; reissues 11,715-11,720. 1899 [1901]. 2 pts. [lix] + 3206 + [1] pp. + 736 pp. of figures, 1 pl. large 8°
- Same, Mar. 1899; v. 322, patents 620,558-622,194; reissues 11,721-11,728. 1899 [1901]. 2 pts. [lvii] + 3123 + [1] pp. + 704 pp. of figures, 1 pl. large 8°
- Same, Apr. 1899; v. 323, patents 622,195-623,961; reissues 11,729-11,737. 1899 [1901]. 2 pts. [lix] + 3264 + [1] pp. + 752 pp. of figures, 1 pl. large 8°
- Same, May, 1899; v. 324, patents 623,962-626,212; reissues 11,738-11,744. 1899 [1901]. 2 pts. [lxxvii] + 4213 + [1] pp. + 960 pp. of figures, 1 pl. large 8°
- Same, June, 1899; v. 325, patents 626,213-627,960; reissues 11,745-11,753. 1899 [1901]. 2 pts. [lix] + 3242 + [1] pp. + 712 pp. of figures, 1 pl. large 8°

Navy Department

- Circular relating to enlistment of boys in naval service. June 6, 1899 [reprint 1901]. 3 pp. 12°
- Departmental order 31; July 25, 1901. 1 p. narrow 12°
- General court-martial order 66, 71-110 [1901]; Apr. 10-June 27, 1901. 12°
- General information concerning U. S. S. Minnesota, offered for sale. [July 17, 1901.] 2 l. narrow 12°
- General order 3, 48, 53-57; June 30, 1900 [reprint 1901], June 6-July 29, 1901. 12° [No. 48 is Regulations for uniforms for officers and enlisted men of Navy.]

Navy yard order 26 revised, 233-238, employment of labor at navy yards;
Jan. 11, 1899 [reprint 1901], July 1-17, 1901. Narrow 12°
Special order 9; July 19, 1901. 2 pp. 12°

EQUIPMENT BUREAU

Specification for iron pins for chain shackles not fitted for use of keying
rings and designed to replace wooden pins still in use in some chains.
July 13, 1901. 1 p. 12°
Specifications for running lights for torpedo boats and destroyers. June
28, 1901. 1 p. 12°
Specifications for 3-arm protractor. [June 22, 1901.] 2 pp. 12°

HYDROGRAPHIC OFFICE

NOTE.—The Charts, Sailing Directions, etc., of the Hydrographic Office are sold
by the office in Washington and also by agents at the principal American and
foreign seaports and American lake ports. Copies of the Hydrographic Bulletin
and Notice to Mariners are supplied free on application at the Hydrographic
Office in Washington and at the branch offices in Boston, New York, Philadel-
phia, Baltimore, Norfolk, Savannah, New Orleans, San Francisco, Portland
(Oreg.), Port Townsend, Chicago, Cleveland, Buffalo, Sault Ste. Marie, and
Duluth.

Addenda [to] Mediterranean Pilot, v. 1, 1894 [British Admiralty].
[1901.] 13 l.

Hydrographic bulletin, weekly, 618-622; July 3-31, 1901. Each 1 p.
large 4° and f°

NOTE.—Contains accounts of obstructions and dangers along the coast and the
principal ocean routes, etc.

Notice to Mariners, weekly, 27-30, 1901; July 6-27. 280-322 + [15] l.

NOTE.—Contains information of newly discovered dangers to navigation and of
establishment and changes of lights and other aids. For economy and conven-
ience in distribution the items in each number relating to different geographical
sections are reprinted separately, as Notice to Mariners 27, sec. 2, etc.

Charts

America Bay, southeast coast of Siberia, from Russian plan, 1898; chart
1955. Scale naut. m. = 2 in. July, 1901. 18.1 × 24.5 in. 10c
Currimao Harbor, Luzon, Philippine Islands, from Spanish survey, 1898;
chart 1962. Scale 600 yds. = 4.25 in. July, 1901. 14.2 × 10.7 in. 10c

Hamada and Nagahama harbors, Honshu, n. w. coast, Japan, from
Japanese survey in 1891; chart 1925. Scale naut. m. = 7.4 in. June,
1901. 24.81 × 17.80 in. 20c

Honshu, Japan, Harbors and anchorages on west coast of, from Japanese
surveys in 1898; chart 1949. July, 1901. 25.3 × 37.2 in. 10c

Awo Shima. Scale naut. m. = 1.7 in. 10.5 × 9.4 in.
Awo Shima Hakuchi. Scale naut. m. = 5 in. 15.8 × 7.7 in.
Hirasawa Wan. Scale naut. m. = 3.9 in. 5.3 × 9.4 in.
Kamo Ko. Scale naut. m. = 12 in. 9.6 × 13.2 in.
Nezugasaki Ko. Scale naut. m. = 5.3 in. 5.3 × 6.3 in.
Obato Wan. Scale naut. m. = 3.4 in. 5.3 × 7.7 in.
Sakata Ko. Scale naut. m. = 4 in. 9.6 × 10.2 in.
Senami Hakuchi. Scale naut. m. = 9.7 in. 9.6 × 13.8 in.
Shiokoshi Bana. Scale naut. m. = 3.4 in. 5.3 × 6.2 in.
Tobi Shima. Scale naut. m. = 4 in. 10.5 × 9.9 in.
Tobi Shima Byochi. Scale naut. m. = 10 in. 10.5 × 10.3 in.

Mashiike Hakuchi, west coast of Hokushu, Japan, from Japanese survey
in 1897; chart 1947. Scale naut. m. = 7.97 in. July, 1901.
12.6 × 17.4 in. 10c

- Midway Islands, north Pacific Ocean, from survey by U. S. S. Iroquois in June and July, 1900; chart 1952. Scale naut. m. = 2.5 in. July, 1901. 37 × 29.6 in. 10c
- Patience, Cape, and Robben Island, Sakhalin Island, Sea of Okhotsk, from British and Russian sketch surveys, scale naut. m. = 0.3 in.; with insets, Robben, [or] Tyulenia or Seal Island, from latest Russian chart, scale naut. m. = 10.4 in.; Cape Patience, Saghalin I., East Bay, from British survey in 1893, scale naut. m. = 3 in.; chart 1960. July, 1901. 19.1 × 26, 9.6 × 6.9, and 9.6 × 6.9 in. 10c
- Pilot chart of north Atlantic Ocean, July, 1901; chart 1400. Scale 1° long. = 0.27 in. 21 × 32 in. [Monthly.] 10c
- NOTE.—Contains, in addition to sailing routes, etc., hurricane of Sept. 13, 1900, on coast of Newfoundland; charts published, etc., June 1-30, 1901; equator crossings in Pacific Ocean; forecast and review of weather; also, on reverse, drift of floating bottles.
- Pilot chart of north Pacific Ocean, Aug. 1901; chart 1401. Scale 1° long. = 0.2 in. 20.7 × 35.3 in. [Monthly.] 10c
- NOTE.—Contains, in addition to sailing routes, etc., forecast of wind and weather; fishing banks; charts published, etc., June 15-July 15, 1901; storm tracks; typhoons in east Asiatic waters; equator crossings in Atlantic Ocean.
- Tusang Bongao Channel with Simanalé Anchorage, Tawi Tawi Group, Philippine Islands, from Spanish surveys in 1877 and 1882; chart 1921. Scale naut. m. = 7 in. July, 1901. 39.8 × 15.6 in. 10c
- Vostok Bay, southeast coast of Siberia, from Russian plan, 1898; chart 1954. Scale naut. m. = 4 in. July, 1901. 18.4 × 24.9 in. 10c

NAVIGATION BUREAU

- Circular regarding enlistment of machinists [in Navy]. [1901.] 1 p. narrow 12°
- List and station of commissioned and warrant officers of Navy and Marine Corps on active list, July 1, 1901. 113 pp. *10c

NAVAL ACADEMY

- Regulations for interior discipline and government; by [Richard Wainwright] superintendent. 1901. 79 pp. 12°
- Report of board of visitors, 1901. 5 pp.

ORDNANCE BUREAU

- Pan-American Exposition, Navy Department's ordnance exhibit. [1901.] 7 pp.
- Specifications for 9, type 5, Rand air compressors. [1901.] 2 pp. 12°

SUPPLIES AND ACCOUNTS BUREAU

- Specifications for iron rivets, flathead and countersunk; issued July, 1901. 1 p. 12°

YARDS AND DOCKS BUREAU

- Specification 1142 for coal storage plant at navy yard, Portsmouth, N. H. [July, 1901.] 7 pp. f°
- Specification 1163 for storehouse for combustible material, building 102, at navy yard, Washington, D. C. [July, 1901.] 4 pp. f°
- Specification 1166 for repairs to large chimney, building 42, at navy yard, Boston, Mass. [July, 1901.] 3 pp. f°

- Specification 1168 for quay wall between piers 7 and 8, at navy yard, Boston, Mass. [July, 1901.] 4 pp. f°
- Specification 1170 for mooring slips at St. Helena, at navy yard, Norfolk, Va. [July, 1901.] 4 pp. f°
- Specification 1171 for 120-ton floating derrick for navy yard, Norfolk, Va. [July, 1901.] 5 pp. f°
- Specification 1174 for dredging and removing mud, sand, silt, etc., at navy yard, New York. [July, 1901.] 2 pp. f°
- Specification 1175 for removing crib work, etc., cob dock, at navy yard, New York. [July, 1901.] 2 pp. f°
- Specification 1176 for carpenter and joiner shop for yards and docks, building 88, at navy yard, Puget Sound. [July, 1901.] 4 pp. f°
- Specification 1181 for 2 coal-hoisting towers and machinery at naval station, San Juan, P. R. [July, 1901.] 3 pp. f°

Post-Office Department

NOTE.—The Department sells the volume of Postal Laws and Regulations at 42c and post-route maps from 80c to \$4.20.

- Greatest business organization in the world, United States postal service; by Charles Emory Smith. [1901.] 15 pp. 15 il.
- United States Official Postal Guide, 2d series, v. 23, no. 7; July, 1901. Philadelphia. 44 pp. 12° [Monthly.] \$2.00 a yr

NOTE.—No. 1, January, for each year, is what is usually known as the Postal Guide, nos. 2-12 being additions and corrections. Sold by the printer, George F. Lasher, 147 North 10th street, Philadelphia.

FOREIGN MAIL SERVICE

- Schedule of steamers appointed to convey mails to foreign countries during Aug. 1901. 1 p. narrow f° [Monthly.]

RAILWAY MAIL SERVICE

- Daily bulletin of orders affecting postal service, v. 22, nos. 6505-30; July 1-31, 1901. f° [Daily except Sundays and holidays.]

State Department

NOTE.—The State Department distributes the Consular Reports and other Departmental publications gratuitously. For sale of laws see page 340.

- Convention between United States and Great Britain relating to tenure and disposition of real and personal property, signed Washington, Mar. 2, 1899, proclaimed Aug. 6, 1900 [with notice of accession of 26 British colonies]. [1901.] 7 pp.
- Convention between United States and Great Britain relating to tenure and disposition of real and personal property, signed Washington Mar. 2, 1899, proclaimed Aug. 6, 1900 [with notice of accession of 31 British colonies]. [1901.] 8 pp.
- Diplomatic list, July, 1901. 12 pp. 24° [Monthly.]
- Report in case of Salvador Commercial Company v. Salvador. 1901. 47 pp.

AMERICAN REPUBLICS BUREAU

NOTE.—This Bureau sells its own monthly bulletins, handbooks, etc., at prices usually ranging from 5c to 60c. Address the Director of the Bureau.

- [9th] annual report of director, 1899; pt. 4, reports on conditions and prospects of British trade in certain South American countries, by T. Worthington. Dec. 10, 1899, [imprint date] 1900 [published 1901]. 178 pp. (H. doc. 175, pt. 4, 56th Cong. 1st sess. In v. 74.)
- International Union of American Republics. 1901. 37 pp.
- Monthly bulletin, July, 1901; whole no. 94, v. 11, no. 1. 1-214 + xxvi pp. (H. doc. 356, pt. 7.) [Contains articles in English, Spanish, Portuguese, and French.] 25c single copy, \$2.00 a yr

Contents:

Accessions to library, Jan.-June, 1901.

— June [1901].

Argentina. President's message; foreign commerce, first quarter of 1901; frozen-meat trade; development of printing and journalism; industries in Córdoba; miscellaneous notes.

Bolivia. New exploring expedition; treaty of friendship and extradition with Italy.

Book notices.

Brazil. Notes.

Chile. Death of President Errázuriz; President's message; railway lines; report of Antofagasta and Bolivia Railway Company; notes.

Colombia. Export duties on native products.

Costa Rica. Boundary limits with Colombia; commerce with Spain.

Cuba. Notes.

Ecuador. Notes.

Gold and silver. World's production of.

Guatemala. Regulations for exploitation of forests of Republic; notes.

International American Conference at City of Mexico.

Latin America. Trade opportunities in.

Mexico. Foreign commerce first 9 months, fiscal year 1900-01; production of cane sugar; maize product; new enterprises; miscellaneous notes.

Nicaragua. Concessions for railroads.

Paraguay. Commercial and industrial progress; notes.

Periodicals and newspapers on file.

Peru. Colonization of Pachitea River Valley; notes.

Rivers of South America.

Salvador. New patent law; notes.

Spanish America. Trade with.

United States. Trade with Latin America; foreign commerce in May; monthly reports on domestic commerce; uniform statistics of clearances and entries; development of trade with Latin America; production of coal; commerce of Philippine Islands; recognition of Latin-American consular officers; flora of Hawaii; notes.

Uruguay. Notes.

Venezuela. Notes.

FOREIGN COMMERCE BUREAU

Advance sheets of consular reports, July 1-31, 1901; nos. 1076-1101. il. 1 pl. [Daily except Sundays and holidays.]

Contents:

Africa, German east, by J. F. Winter; no. 1098.

— west, Trade notes from, transmitted by O. L. W. Smith; no. 1089.

Agricultural implements, Testing, in Russia, note; no. 1087.

Almond crop, World's, by B. H. Kildgely; no. 1096.

Assay office in Vancouver, note; no. 1098.

Austria's great canal system, by C. B. Hurst; no. 1085.

Automobiles in Europe, by Thornwell Haynes; no. 1095.

Banana meal, Market for, in Europe, note; no. 1078.

Barrels in Argentine Republic, note; no. 1078.

Bauxite in New South Wales, by O. H. Baker; no. 1100.

Bronze powder, Manufacture of, in Germany, by F. H. Mason; no. 1087.

Builders' association in Austria, note; no. 1087.

Cable service at Chefoo, note; no. 1098.

— to Tampico, note; no. 1090.

Calcutta, Proposed museum of American goods at, by R. F. Patterson; no. 1093.

Canal traffic in Germany, note; no. 1095.

Canary Islands, Imports of, transmitted by Richard Guenther; no. 1088.

Cape Colony, Loss of United States trade in, note; no. 1092.

Caribe, Venezuela, Port improvements at, note; no. 1087.

Cement in Peru, note; no. 1088.

Advance sheets of consular reports—Continued.

Contents—Continued.

- Cereals, Exportation of, from Turkey prohibited, note; no. 1101.
 China, southern, American trade in, by R. M. McWade; no. 1097.
 Chinese settlement in Borneo, note; no. 1085.
 [Cigarette] box factory, American, in Japan, transmitted by S. S. Lyon; no. 1096.
 Coal, American, in Europe, note; no. 1096.
 Cocoanuts and copra, Production of, in South America, by several consuls; no. 1094.
 Coffee, Costa Rican duty on, note; no. 1078.
 Coke briquettes in Germany, note; no. 1089.
 Commercial travelers, Hungarian law respecting, transmitted by F. D. Chester; no. 1093.
 Copper ores, Reduction of, in Australasia, by several consuls; no. 1083.
 — in Canada, by several consuls; no. 1084.
 — in Chile, by E. S. Jackson, transmitted by C. C. Greene; no. 1084.
 — in England and Norway, by several consuls; no. 1080.
 — in France, by R. P. Skinner; no. 1081.
 — in Germany, by F. H. Mason; no. 1079.
 — in Japan, note; no. 1084.
 — in Mexico, by A. D. Barlow; no. 1084.
 — in Spain and Austria, by several consuls; no. 1082.
 — in Cape Colony, note; no. 1084.
 Cotton industry of Russia, by W. R. Holloway; no. 1093.
 Cotton sheetings, Demand for, by R. P. Skinner; no. 1101.
 Crabs, Russian, Export of, note; no. 1090.
 Cyprus, Commerce of, by G. B. Ravndal; no. 1099.
 Dahomey, Railroad in, note; no. 1091.
 Decorative art, Exposition of, at Turin, note; no. 1092.
 Dessau, Germany, Exhibition at, note; no. 1087.
 East Indian trade, Hints on, by O. J. D. Hughes; no. 1090.
 Eggs, Preservation of, in Germany, note; no. 1077.
 Food and drink supply of Paris, note; no. 1078.
 Fruit, fresh, Preserving, in Victoria, note; no. 1077.
 Fruit and vegetable exhibit at Moscow, note; no. 1096.
 Fuel, New German, note; no. 1091.
 Gas engines in Denmark, note; no. 1098.
 German commercial association in Japan, note; no. 1087.
 German customs regulations, Proposed, note; no. 1092.
 German tariff, Recent changes of classification under, by F. H. Mason; no. 1085.
 Germany, Industrial situation in, by H. W. Diederich; no. 1088.
 — United States trade with, transmitted by A. D. White; no. 1099.
 Glass blowing by compressed air in Germany, note; no. 1086.
 Gold jubilee, Victorian, note; no. 1077.
 Grain, Persian export of, prohibited, transmitted by John Tyler; no. 1076.
 Grain futures, Dealings in, in Austria, note; no. 1092.
 Hamburg-American Steamship Company, New lines of, by Richard Guenther; no. 1099.
 Harput, Exhibition of American goods at, by T. H. Norton; no. 1098.
 Houses, Portable, in Caracas, note; no. 1078.
 Iceland, Communication with, note; no. 1078.
 Japan, Exposition in, note; no. 1091.
 Kaolin clay in British Guiana, by G. H. Moulton; no. 1086.
 Kerosene, Proposed duty on, in Japan, note; no. 1085.
 Korean railway, New, transmitted by H. N. Allen; no. 1096.
 La Boca, Colombia, Wharf at, by Francis Gudger; no. 1091.
 Life-saving service, Exposition for, in Frankfort, note; no. 1090.
 Loire, River, Improvements of, by J. I. Brittain; no. 1091.
 Loschwitz, Saxony, Suspension railway at, by C. L. Cole; no. 1076.
 Lucas gaslight, note; no. 1078.
 Mahogany in south Africa, note; no. 1088.
 Manchester exports to United States, by W. F. Grinnell; no. 1088.
 Mangoes in India, by W. T. Fee; no. 1100.
 Match trade in India, by W. T. Fee; no. 1100.
 Mercerized cotton in Germany, by F. M. Brundage; no. 1087.
 Metal workers' school in Saxony, by E. T. Liefeld; no. 1100.
 Moscow trade with United States, note; no. 1089.
 Netherlands, New method of construction in, transmitted by F. D. Hill; no. 1089.
 Oil of roses in Bulgaria, note; no. 1098.
 Ontario, Canal improvements and water power in, note; no. 1085.
 — Trade notes from, note; no. 1085.
 Packing goods for export, by Charles Neuer; no. 1092.
 Palestine, Wagon roads in, by Selah Merrill; no. 1101.
 Pearl fisheries in Venezuela, by Louis Goldschmidt; no. 1076.
 Persia, Customs administration in [law]; transmitted by John Tyler; no. 1089.
 Persian Gulf, Trade opportunities in, note; no. 1100.
 Petroleum, Russian, Decline in price of, note; no. 1093.
 Prussia and Saxony, New railroads in, note; no. 1092.
 Puerto Cabello, Wharf improvements at, note; no. 1089.
 Quinine auction sale at Batavia, note; no. 1091.

Advance sheets of consular reports—Continued.

Contents—Continued.

- Railways, Municipal, in Europe, by Richard Guenther; no. 1086.
- Raisin crop, European, by B. H. Ridgely; no. 1096.
- Rouen, Direct trade of, with Morocco, note; no. 1076.
- Russian duties on United States goods, New, note; no. 1096.
- Sale agents in England, note; no. 1085.
- Shimonoseki, Japan, Growth of, note; no. 1077.
- Ship canals of Russia, by J. E. Kehl; no. 1096.
- Silkworms, Cultivation of, in Germany, note; no. 1085.
- Smoke-consuming furnaces for Germany, by Richard Guenther; no. 1078.
- Spraying machines, French opening for, by H. S. Van Buren; no. 1090.
- Starch trade in Egypt, by F. W. Hossfeld; no. 1092.
- Steamship line, Proposed, between Java and America, note; no. 1098.
- Suez Canal traffic, Germany's share in, note; no. 1078.
- Sulphur for plant diseases in Italy, note; no. 1086.
- Textiles in Argentina, transmitted by G. H. Murphy; no. 1090.
- Tobacco, Venezuelan duty on, note; no. 1093.
- Trans-Baikal Railroad, note; no. 1093.
- Transvaal, Trade openings in, note; no. 1088.
- Turkey, New duties in, note; no. 1091.
- Venezuela, Port charges in, note; no. 1093.
- Walnut market, Foreign, by R. P. Skinner; no. 1077.
- Wheat crop of India, by R. F. Patterson; no. 1090.
- of Russia, note; no. 1090.
- Wood, Canadian discovery for preserving, note; no. 1087.

Consular Reports, July, 1901; v. 66, no. 250. xx + 305-454 pp. (H. doc. 527, pt. 3.) [Monthly.] *15c

Contents:

- Alcohol vs. coal in Germany; by Richard Guenther.
- American trade, How to create, in France; by W. T. Griffin.
- Argentina, Trade outlook in; by Daniel Mayer.
- Automobiles, Exposition of, at Brussels; by G. W. Roosevelt.
- British Guiana, Resources of; transmitted by G. H. Moulton.
- Canada, Railway subsidies in; by Gustave Beutelspacher.
- Unexplored; by A. G. Seyfert.
- Chile and Nicaragua, Reciprocity treaty between.
- Coal, American vs. Welsh; transmitted by C. M. Caughy.
- in Germany; by O. J. D. Hughes.
- Coal mines, Vancouver; by A. E. Smith.
- Coal production, Austria's; by F. W. Hossfeld.
- Coal situation in Hungary; by F. D. Chester.
- Colombia, Railroads of; by C. B. Hart.
- Copper, Production and consumption of, in Germany; by F. H. Mason.
- Corn in Netherlands, by Morris Weill; transmitted by F. D. Hill.
- Cotton growing in west Africa; by James Boyle.
- Crop prospects, Unfavorable, in Germany; by F. H. Mason.
- Dahomey, Trade of; by Richard Guenther.
- Electric plants, Opening for, in India; by R. F. Patterson.
- Electric railways in Germany; by Richard Guenther.
- in Saxony; by B. H. Warner, jr.
- Foreign reports and publications.
- Foreigners, Land titles of, in Japan [law]; transmitted by E. C. Bellows.
- in Russia [law]; transmitted by Charlemagne Tower.
- Frost, Prevention of, by cannon and smoke; by J. C. Covert.
- Fruits, Californian vs. Spanish; transmitted by R. M. Bartleman.
- Furniture in southern Germany; by O. J. D. Hughes.
- German commercial activity in South America; transmitted by G. H. Murphy.
- German customs war with Haiti; transmitted by G. H. Murphy.
- German law taxing department stores, Working of; by F. H. Mason.
- Germany, American manufactured products in; by F. H. Mason.
- Trade methods in; by Charles Neuer.
- Germany's foreign commerce, 1900; by J. B. Jackson.
- Gold discoveries, Alleged, in Samoa; by L. W. Osborn.
- Heating appliances, Spanish exposition of; transmitted by J. G. Lay.
- Hungary, Industrial progress in; by F. W. Mahin.
- Japanese investments of capital; transmitted by S. S. Lyon.
- Kiel, dock plants at, Enlargement of; by Hugh Pitcairn.
- Korea, Foreign enterprises in; by H. N. Allen.
- Labor bureau, International, in Switzerland; by George Gifford.
- Liege trade with the United States; by A. A. Winslow.
- Life-saving apparatus, Improved German.
- Liverpool medical fellowship open to Americans; transmitted by James Boyle.
- Locomotives, English vs. American, in Jamaica; by N. R. Snyder.
- Mannheim as center for American manufactures; by H. W. Harris.
- Meat-prohibition law, German; transmitted by Richard Guenther.
- Mileage of European railways; by F. D. Hill.
- Mineral production of British Columbia; by A. E. Smith.
- Nicaragua, Cart-road concession in.

Consular Reports—Continued.

Contents—Continued.

- Nile, Improvements on; transmitted by J. G. Long.
 Notes.
 Petroleum in Canada; by J. L. Bittinger.
 Preserves, United States, in Germany; by O. J. D. Hughes.
 Quinine auction in Batavia; by B. S. Rairden.
 Railway brake, New, in Belgium; transmitted by A. A. Winslow.
 Rubber and gutta-percha; by F. D. Hill.
 Russian tariff, New.
 Russian trade with United States in 1900; by W. R. Holloway.
 Salmon, London market for; by W. M. Osborne.
 Salmon fisheries in British Columbia; by L. E. Dudley.
 Salmon industry, British Columbia; by A. E. Smith.
 Savings bank, Belgian government; by G. W. Roosevelt.
 School gardens in Sweden; by Axel Georgii and R. S. S. Bergh.
 Silk, Syrian, for United States; by G. B. Ravndal.
 Simplon tunnel, Progress of; transmitted by H. L. Washington.
 Soap, Market for, in Spain; by J. G. Lay.
 Steamship, New German; by J. E. Kehl.
 Steamship lines, German-South American, Traffic of; transmitted by G. H. Murphy.
 Stone, Artificial; by J. L. Bittinger.
 Sugar-beet waste, Utilization of; by M. J. Baehr.
 Syria, United States trade in; by G. B. Ravndal.
 Teak industry of Siam; by Hamilton King.
 Textiles, American, for European markets; transmitted by D. B. Mason.
 Water route from Flume to Stettin; by F. W. Mahin.
 Wheat imports, Spain's, in 1900; transmitted by R. M. Bartleman.
 Woolen yarns in Germany; by George Sawyer.
 Yukon, Conditions in the; by J. L. Bittinger.

SPANISH TREATY CLAIMS COMMISSION

Papers printed for use of commission; by Clifford Warden. 1901.
 56 pp.

Contents:

- General statement.
 Parliamentary history in detail, 55th Congress, 3d session—56th Congress, 2d session.
 — of the statute, index.
 Public documents relating to claims, List of.
 — reprinted in [Foreign Relations] Committee report 885, 55th Congress, 2d session, List of.
 References to claims in annual messages of President and in Foreign Relations, 1895-97

Treasury Department

- Debt. Statement of public debt and cash in Treasury, July, 1901.
 1 p. f° [Monthly.]
 Disinfection of hides of neat cattle. July 30, 1901. 2 pp. 4° (Dept. circular 82, 1901; Division of Customs.)
 Porto Rico. Abolition of duties under section 3 of Porto Rican act of Apr. 12, 1900 [proclamation]. July 25, 1901. 2 pp. 4° (Dept. circular 80, 1901; Division of Customs.)
 St. Marys River. Rules and regulations governing movements and anchorage of vessels in river. Jan. 22, 1901 [reprint]. 7 pp.
 San Antonio International Fair and Texas State Fair and Dallas Exposition. July 22, 1901. 2 pp. 4° (Dept. circular 77, 1901; Division of Customs.)
 Seal fisheries. Regulations governing vessels employed in fur-seal fishing during season of 1901. 6 pp.
 Steamboat Inspection Service. Rules and regulations fixing salaries of inspectors of steam vessels under act approved Mar. 1, 1895, concerning regulation of steam vessels. July 23, 1901. 1 p. 4° (Dept. circular 79, 1901; Division of Appointments.)

Treasury decisions under tariff, internal revenue, immigration, navigation laws, etc., weekly, v. 4, nos. 27-30; July 4-25, 1901. [Department decisions numbered 23145-198, including general appraisers' decisions 4955-74, and internal revenue decisions 373-385.]

APPRAISERS

Reappraisements of merchandise by general appraisers [on June 24-July 25, 1901]; July 1-29, 1901. 4° (Reappraisement circulars 713-723; Division of Customs.) [Weekly.]

AUDITOR FOR TREASURY DEPARTMENT

Annual report, 1901. 21 pp. (Treas. Dept. doc. 2227.)

AUDITOR FOR WAR DEPARTMENT

Annual report, 1901. 10 pp. (Treas. Dept. doc. 2231.)

BOOKKEEPING AND WARRANTS DIVISION

Comparative statement of receipts and expenditures of United States [for month of July, 1900 and 1901]. 1 p. oblong 8° [Monthly.]

Statement of Treasury, July 2-31, 1901. Each [3] pp. 4° [Daily except Sundays and holidays; none issued July 1.]

COAST AND GEODETIC SURVEY

NOTE.—The Charts, Coast Pilots, and Tide Tables of the Coast and Geodetic Survey are sold at the office of the Survey, in Washington, and also by one or more sales agents in each of the important American seaports. The monthly Notice to Mariners may be had free at these agencies, at all United States custom-houses, at the branch hydrographic offices of the Navy Department, at United States consulates in foreign ports, and at the office of the Coast Survey.

Base apparatus. Aparatos por la medida de bases. [Mayo 1, 1901.] 5 pp. 1 pl. 12°

Chart publications. Publicación de mapas. [Mayo 1, 1901.] 4 pp. 12°

Coast pilots. Derroteros de las costas. [Mayo 1, 1901.] 4 pp. 12°

Geodesy. Geodesia, ó medida de la tierra. [Mayo 1, 1901.] 5 pp. 12°

Gravity. Gravedad. [Mayo 1, 1901.] 4 pp. 1 pl. 12°

Hydrography. Hidrografía. [Mayo 1, 1901.] 5 pp. 1 pl. 12°

Leveling. Nivelación. [Mayo 1, 1901.] 4 pp. 1 pl. 12°

Magnetics. Estudio magnético. [Mayo 1, 1901.] 4 pp. map, 12°

Notice to Mariners 273; June, 1901. 18 + [2] pp. 4° [Monthly.]

NOTE.—Contains corrections for charts of the Coast and Geodetic Survey, with lists of new charts, canceled editions, etc.

Tides. Mareas y corrientes de las mareas. [Mayo 1, 1901.] 4 pp. 12°

Time. Tiempo, latitud y longitud. [Mayo 1, 1901.] 4 pp. 12°

Topography. Topografía. [Mayo 1, 1901.] 4 pp. 1 pl. 12°

Triangulation. Triangulación y reconocimiento del terreno. [Mayo 1, 1901.] 4 pp. 1 pl. 12°

U. S. Coast and Geodetic Survey. [May 1, 1901.] 5 pp. 12° [Spanish.]

Charts

Grays Harbor, Wash.; chart 6195. Scale 1:40,000. June, 1901, first published 1886. 21.4 × 38 in. 25c

St. Michael Bay, Alaska; chart 9375. Scale 1:20,000. June, 1901, first published 1896. 38 × 31.5 in. 50c

COMPTROLLER OF CURRENCY

Bulletin 428-432; July 1-29, 1901. 4° [Weekly.]

NOTE.—Announces changes in officers of national banks, organization of new banks, liquidations, etc.

GOVERNMENT ACTUARY

Market prices and investment values of outstanding securities [June, 1901]. July 1, 1901. 2 pp. 4° (Dept. circular 75, 1901.)

INTERNAL REVENUE OFFICE

Collection of internal-revenue tax upon articles of merchandise coming from Porto Rico. July 26, 1901. 5 pp. 4° ([Circular] 606; Dept. circular 81, 1901.)

Extending time when regulations requiring cancellation of beer stamps by perforations shall take effect. July 16, 1901. 1 p. 4° (Circular 605.)

Preliminary report of commissioner on collection of internal revenue and condition of service. July 24, 1901. 9 pp.

War-revenue act of June 13, 1898, as amended by act of Mar. 2, 1901, and other acts passed since compilation of 1900, in force July 1, 1901. 46 pp. (Compilation of internal-revenue laws, supplement 1.)

LIGHT-HOUSE BOARD

NOTE.—The Bulletins, Beacon and Buoy Lists, and Light Lists published by the Light-House Board can be obtained, free of charge, on application to the office of the Board at Washington, the inspectors of the several lighthouse districts, the United States custom-houses, the Hydrographic Office and its branches, and the sales agents of the Coast and Geodetic Survey.

Bulletin 121, recent changes in aids to navigation, July 1, 1901, coasts of United States. 20 + [2] pp. 4° [Monthly.]

Notice to Mariners 98-105 of 1901; July 2-27, 1901. p. 98-105, 4°

NOTE.—Contains notices of establishment of new lights, light-vessels, and steam whistles, changes in buoyage, etc.

Specifications for miscellaneous articles, 1902. June, 1901. 58 pp. 4°

LOANS AND CURRENCY DIVISION

Circulation statement, July 1, 1901. 1 p. oblong 8° [Monthly.]

NOTE.—Estimated population, July 1, 1901, 77,754,000; circulation per capita, \$28.00.

Registered bonds caveated upon books of Department, July 1, 1901. 1 p. f° [Monthly.]

MARINE HOSPITAL SERVICE

Amendments to regulations relating to relief furnished Revenue Cutter Service. July 23, 1901. 2 pp. 4° (Dept. circular 78, 1901.)

Portable laboratories of service; by H. D. Geddings. 1901. 8 pp. 2 pl.

Public Health Reports, v. 16, nos. 27-30; July 5-26, 1901. [xvi] + 1513-1731 pp. [Weekly.]

NOTE.—This publication, showing health conditions in various parts of this and other countries, as reported by the officers of the Marine Hospital Service and others, is for gratuitous distribution, but the edition is limited, and the document is intended only for health officers and other persons interested in sanitary affairs. To obtain it application should be made to the Supervising Surgeon-General of the Marine Hospital Service, Treasury Department. No. 30 contains a special article, Cedron seed as cure for yellow fever, by S. H. Hodgson.

United States Marine-Hospital Service. [1901.] 16 pp.

MINT BUREAU

Values of foreign coins. July 1, 1901. [3] pp. 4° (Dept. circular 74, 1901.) [Quarterly.]

ASSAY COMMISSION

Proceedings of commission of 1901, and test of coinage executed and reserved during calendar year 1900; also laws relating to annual assay. 1901. 30 pp. (Treas. Dept. doc. 2225.)

PORTO RICO

Digest of appropriations made by Legislative Assembly at 1st session [for 1901 and 1902], prepared in office of auditor of Porto Rico. [1901.] [4] pp. f°

Instructions to disbursing officers [from auditor of Porto Rico]. June 25, 1901. [3] pp. 4°

REVENUE CUTTER SERVICE

Additional regulation governing anchorage of vessels at Chicago. July 6, 1901. 1 p. 4° ([Circular] 78; Dept. circular 76, 1901.)

General orders 65-68; May 16, 1901. 2 l. 1 pl.

Register of officers and vessels of service. July 1, 1901. 61 pp. (Treas. Dept. doc. 2226.)

SECRET SERVICE DIVISION

Annual report of chief, 1901. 11 pp. (Treas. Dept. doc. 2229.)

STATISTICS BUREAU

Advance sheets from Monthly Summary of Commerce and Finance, showing details of imports and exports by articles and countries for June, 1901. 64 pp. 4°

Exports of domestic breadstuffs, provisions, cotton, and mineral oils, June, 1901. 13 pp. 4° (Bulletin 12, series 1900-1901.) [Monthly.]

Foreign Commerce and Navigation of United States, 1900. 1901. v. 2, 1171 pp. 4° ([Treas. Dept. doc. 2210, v. 2]; H. doc. 13 [pt. 2].) *\$1.35

Imports and exports of United States, June, 1901. 1 p. 4° [Monthly.]

Monthly Summary of Commerce and Finance of United States, May, 1901; no. 11, series 1900-1901. p. 2579-2811, 4° (H. doc. 15, pt. 11.) *35c

TREASURER OF UNITED STATES

Monthly statement, paper currency of each denomination outstanding July 31, 1901. 1 p. oblong 24°

Statement of funded indebtedness of District of Columbia and late corporation of Washington, [by] ex-officio commissioner of sinking fund of District, June 29, 1901. 1 p. oblong 8° [Quarterly.]

War Department

Annual reports, 1900 [v. 1, pt. 7]. [See Army.]

ADJUTANT-GENERAL

- Army list and directory, officers of Army, July 20, 1901; [no.] 20. 66 pp. *10c
- Circular 22-26 [1901]; July 2-24, 1901. 12°
- Circular [notifying candidates for appointment to Military Academy that they will be required to take examination at army post most convenient to home]. July 13, 1901. 2 pp. 12°
- Enlistments for line of Army, June, 1901. 10 pp. 12° [Monthly.]
- General orders 91-99 [1901]; July 1-26, 1901. 2 il. 12°
- Special orders 152-177 [1901]; July 1-31, 1901. 12° [Daily except Sundays and holidays.]
- Stations of Army, July 4, 18, 25, 1901. Each [2] pp. oblong f° [Weekly.]
- Subject index to general orders and circulars, Jan. 1881-Dec. 1900. Apr. 1901. 301 pp. (War Dept. doc. 139.)

MILITARY INFORMATION DIVISION

- Notes of military interest for 1900. Jan. 1901. 262 pp. 27 il. 15 pl. 12 maps, 8 in pocket, 1 tab. ([Publication] 32; War Dept. doc. 142.) 50c

ARMY

- Report of lieutenant-general commanding Army [with reports of department commanders, etc.], 1900. 1900 [1901]. pt. 5, ii + 477 + [1] pp. 1 il. 27 pl. 37 maps. (War Dept., Reports, 1900 [v. 1, pt. 7]; H. doc. 2.) *65c

Contents:

Military operations in Philippines, continued.

DEEP WATERWAYS BOARD

- Report on deep waterways between Great Lakes and Atlantic tide waters [with bibliography on mitering lock gates by S. H. Woodard]. Dec. 7, 1900 [published 1901]. 2 pts. 1115 pp. il. 11 pl. large 8° (H. doc. 149 [2 pts.].) [Atlas will follow.]

ENGINEER DEPARTMENT

- Dempsey, P. J. Office circular [announcing appointment of Dempsey as chief clerk]. July 15, 1901. 1 p. 12°
- General orders 7 [1901]; July 24, 1901. 2 pp. 12°
- Officers. Statement showing rank, duties, and addresses of officers of Corps of Engineers. July 1, 1901. 22 pp. 4°
- Professional papers. Report of board on specifications for electric light and power installations of seacoast batteries has been issued in the series of Professional papers as no. 27 and half title-page furnished.
- Special orders 28-30 [1901]; July 6-20, 1901. Each 1 p. 12°
- Warren, William J. Office circular [announcing death of Warren]. July 12, 1901. 1 p. 12°

NORTHERN AND NORTHWESTERN LAKES SURVEY

Charts

NOTE.—Lake Survey charts may be obtained of Major W. L. Fisk, Office U. S. Lake Survey, Detroit, Mich. They will be sent by express, the express charges to be paid by the purchaser on receipt of the charts, or free by mail at the purchaser's risk. Purchasers should indicate, when ordering the charts, whether they wish them sent by express or mail.

- Buffalo Harbor and Niagara River to The Falls, N. Y., Chart of. Scale 1:30,000. May 25, 1901. 44.6 × 27.9 in. 20c

Chicago, Ill., lake front, including Calumet Harbor, Chart of. Scale 1:30,000. [1901.] 40.1 × 26.3 in.

Michigan, Lake, General chart of. Scale 1:500,000. July 1, 1901. 44.1 × 26 in. 15c

INSULAR AFFAIRS DIVISION

Monthly summary of commerce of Cuba, Dec., 1900; no. 6, series 1900-1901. [1901.] p. 389-486, 4° *10c

Monthly summary of commerce of Philippine Islands, Nov. 1900; no. 5, series 1900-1901. [1901.] p. 291-396, 4° *10c

ORDNANCE DEPARTMENT

Notes on rapid-fire field artillery; translated from French by W. W. Gibson. Apr. 1, 1901. 42 pp. 10 il. 13 pl. 4° (Notes on construction of ordnance 79.)

Ordnance orders 7, 8 [1901]; July 10, 31, 1901. Each 1 p. 12°

Public sale [of ordnance property at Fort Constitution, Newcastle, N. H.]. [July 8, 1901.] 4 pp. 4°

PAY DEPARTMENT

Circular 263; July 10, 1901. 2 pp. 12°

Monthly station list of officers, July 1, 1901. 4 pp.

Stoppage circular, July 15, 1901. 12 pp. [Monthly.]

QUARTERMASTER'S DEPARTMENT

Circular [instructions regarding methods to be pursued in accounting for coal delivered on army transports]. June 29, 1901. 2 pp. 12°

Circular [instructions requiring cost price of articles to be entered on inventory and inspection reports]. June 26, 1901. 1 p. 12°

Roster showing stations and duties of officers of Quartermaster's Department, July 15, 1901. 6 pp. [Monthly.]

SIGNAL OFFICE

Orders 14, 15 [1901]; July 1, 15, 1901. Each 1 p. 12°

SUBSISTENCE DEPARTMENT

Army ration, issue and conversion tables. Apr. 23, 1901. 16 pp.

Roster [of officers], July 1, 1901. 4 pp. [Monthly.]

District of Columbia

NOTE.—For quarterly Statement of Indebtedness see Treasurer of United States.
Statistical report of trustees of public schools, 1900 [with school directory, 1900-01]. • 1901. 75 pp. (Report of commissioners, v. 4.)

Smithsonian Institution

Box 81; list of documents and other publications of Government, May 20-July 8, 1901, distributed for Library of Congress through Smithsonian Institution. 1901. 6 pp. [Supplement pasted at end.]

NATIONAL MUSEUM

NOTE.—The publications of the National Museum comprise bulletins, annual reports, and an annual volume of Proceedings. The annual report is included in the Congressional set. The editions of the bulletins and Proceedings are too limited to admit of general distribution, and the volumes of the latter are sent only to libraries. The separates from the Proceedings and from the reports may be obtained on application to the Museum, until the supply is exhausted.

List of fishes collected in 1883 and 1885 by Pierre Louis Jouy and preserved in museum, with descriptions of 6 new species, by David Starr Jordan and John Otterbein Snyder; from Proceedings, v. 23. 1901. p. 739-769, 8 pl. (No. 1235.)

Review of lancelets, hag-fishes, and lampreys of Japan, with description of 2 new species, by David Starr Jordan and John Otterbein Snyder; from Proceedings, v. 23. 1901. p. 725-734, 1 pl. (No. 1233.)

Various Bureaus

CIVIL SERVICE COMMISSION

NOTE.—The Commission furnishes its publications gratuitously to those who apply for them.

Supplement to Manual of examinations, showing dates, places and other information concerning examinations to be held in fall of 1901. 6 pp. 1 tab. [No Manual of Examinations revised to July 1, 1901, will be published.]

FISH COMMISSION

NOTE.—The Commission supplies gratuitously those of its publications which are in print.

Statement of certain fishery products landed at Boston and Gloucester, Mass., by American fishing vessels, June, 1901. 1 p. oblong 8° (Statistical bulletin 109.)

U. S. Fish Commission exhibit, Pan-American Exposition; W. De C. Ravenel, representative. 1901. [3] + 14 pp.

GOVERNMENT PRINTING OFFICE

Author and title list of books in library. July 1, 1901. 118 pp.

DOCUMENTS OFFICE

Catalogue of United States Public Documents, monthly, no. 77; May, 1901. 269-304 + xvii pp.

Same, no. 78; June, 1901. 305-336 + li pp.

INDUSTRIAL COMMISSION

[Hearings on transportation, Jan. 7-May 14, 1901.] p. 193-451, 1 pl. map, 1 tab.

Same, Feb. 18-Apr. 16, 1901. p. 451-611.

Preliminary outline for final review of evidence. [1901.] 14 pp.

LABOR DEPARTMENT

NOTE.—The Department furnishes its publications gratuitously to those who apply for them.

15th annual report of commissioner, 1900; compilation of wages in commercial countries from official sources. 1900 [1901]. v. 2, xvi+865-1642 pp. (H. doc. 528 [pt. 2].) *60c

- Employer and employee under common law; by Victor H. Olmsted and Stephen D. Fessenden. 1901. 13 pp. (Monographs on social economics 3.)
- Present status of employers' liability in United States; by Stephen D. Fessenden. 1901. 54 pp. (Monographs on social economics 4.)
- Protection of workmen in their employment; by Stephen D. Fessenden. 1901. 74 pp. (Monographs on social economics 5.)
- Public baths in Europe; by Edward Mussey Hartwell. 1901. 51 pp. (Monographs on social economics 6.)
- Value and influence of labor statistics; by Carroll D. Wright. 1901. 10 pp. (Monographs on social economics 2.)
- Working of Department of Labor; by Carroll D. Wright. 1901. 17 pp. (Monographs on social economics 1.)

LIBRARY OF CONGRESS

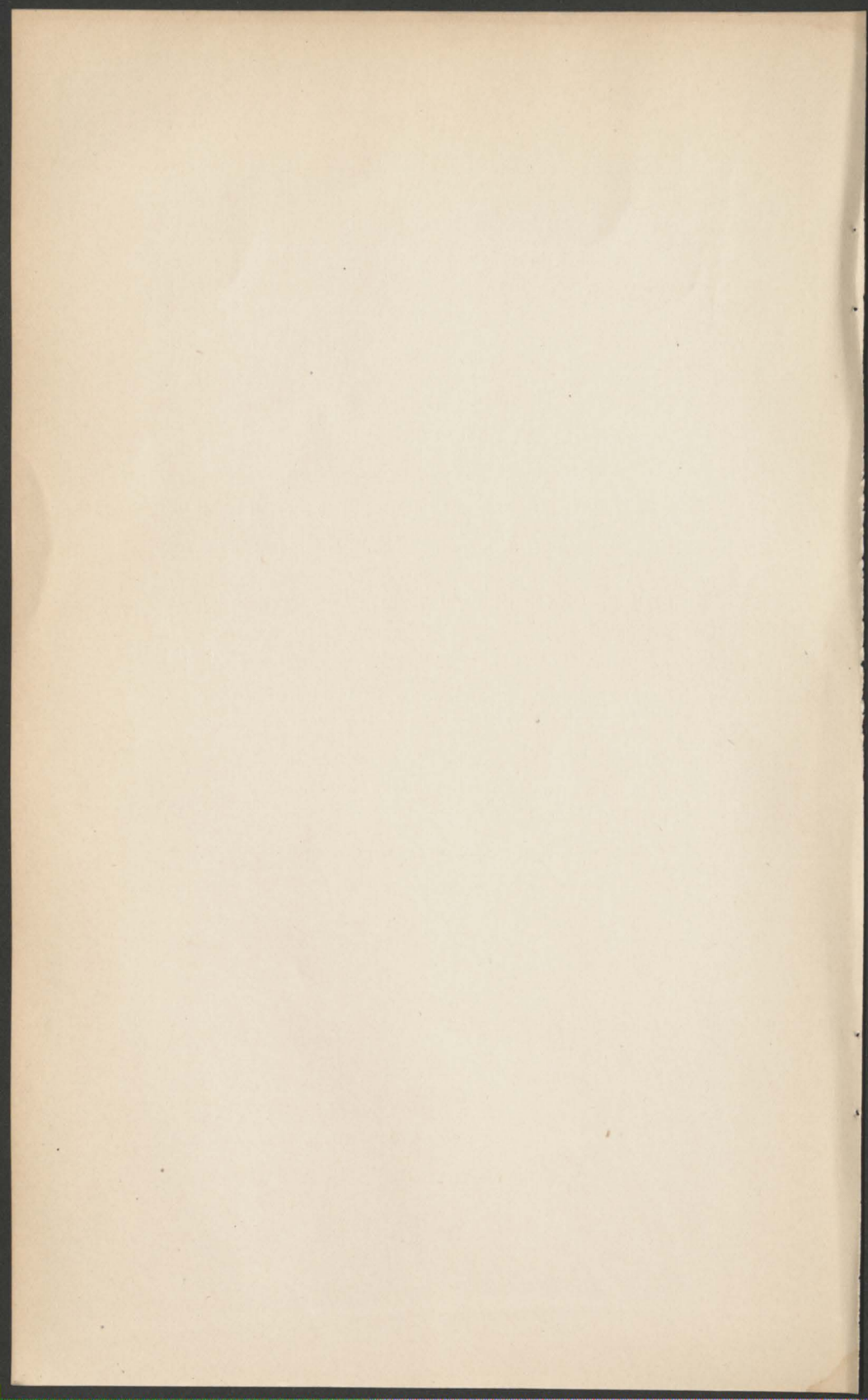
COPYRIGHT OFFICE

NOTE.—The Catalogue of Title Entries is prepared by the Register of Copyrights and published by the Treasury Department. It is not sold by the Treasury Department, the Librarian of Congress, nor the Register of Copyrights, but must be subscribed for at the office of the collector of customs for the district in which the person desiring it lives. The price is \$5.00 per year of 52 numbers. The bulletins of the office are sent free on application to the Register of Copyrights.

- Catalogue of title entries of books and other articles entered under copyright law, v. 28, nos. 1-4; whole nos. 522-525; July 4-25, 1901. p. 1-459. [Weekly.] \$5.00 a yr
- Copyright business, statement to June 30, 1901. [July 9, 1901.] [2] pp. 4° (Information circular 25.) [Quarterly.]
- Copyright law of United States in force July, 1901; by Thorvald Solberg. 5th edition, revised. 1901. 30 pp. (Bulletin 1.)

NATIONAL HOME FOR DISABLED VOLUNTEER SOLDIERS

- Proceedings of managers, Apr. 1901. v. 3, p. 13-30.
- Same, June, 1901. v. 3, p. 31-37.



Shipments to Depositories

During the Month of July, 1901

NOTE.—Shipment numbers run from 1 to 49, inclusive, and then begin again with 1.

Shipment 25

Chemistry Division (Department of Agriculture). Every farm an experiment station, by Ervin E. Ewell; from Yearbook, 1897. [1898.] ii + 291-304 pp. 8°

Congress. 56th Congress, 1st session. House documents, v. 106. No. 710; Patent decisions, 1899. (Serial no. 4003.)

Entomology Division (Department of Agriculture). Destructive green pea louse, nectarophora destructor Johns. [May 23, 1901.] 8 pp. 3 il. 8° (Circular 43, 2d series.)

Experiment Stations Office (Department of Agriculture). Functions and uses of food; by C. F. Langworthy. Apr. 5, 1901. 10 pp. 8° (Circular 46.)

Shipment 26

Congress. 56th Congress, 1st session. Senate documents, v. 9. Nos. 101-147, except 133 and 138; miscellaneous. (Serial no. 3851.)

Shipment 27

Congress. 56th Congress, 1st session. Senate documents, v. 25. Nos. 236-257, except 237; 9th report on reindeer in Alaska, 1899; Tariff schedules in Cuba, Porto Rico, and Philippines; miscellaneous. (Serial no. 3867.)

Shipment 28

Congress. 56th Congress 1st session. House documents, v. 61. Nos. 106, 236; National Soldiers' Home report, 1899; Report of inspection, Sept.-Dec. 1899. (Serial no. 3958.)

War Department. Customs regulations for Cuba. Habana, 1901. 119 pp. 8°

Shipment 29

Congress. 56th Congress, 1st session. Senate documents, v. 26. Nos. 258-337, except 259, 270, 283, 290, 306; miscellaneous. (Serial no. 3868.)

Shipment 30

Congress. 56th Congress, 1st session. House documents, v. 65. No. 117; War of Rebellion, series 3, v. 1. (Serial no. 3962.)

Shipment 31

Congress. 56th Congress, 1st session. House documents, v. 99. No. 588; Yearbook of Department of Agriculture, 1899. (Serial no. 3996.)

Shipment 32

Congress. 55th Congress, 3d session. House documents, v. 1. No. 1; President's message and foreign relations, 1898. (Serial no. 3743.)

Shipment 33

Congress. 56th Congress, 1st session. House documents, v. 92. No. 460, 3 pts.; Spanish-American war claims. (Serial no. 3989.)

Shipment 34

Accounts and Disbursements Division (Department of Agriculture). Use of annual appropriations [decision of comptroller of Treasury, reprinted for disbursing office of Department of Agriculture]. [1901.] 4 pp. 8°

Botany Division (Department of Agriculture). Canadian thistle, *carduus arvensis* L. Robs. [June 17, 1901.] 14 pp. 4 il. 8° (Circular 27 revised.)

Congress. 56th Congress, 1st session. House documents, v. 74. No. 175, pt. 1; American Republics Bureau report, 1899; Bulletin 94. (Serial no. 3971.)

Experiment Stations Office (Department of Agriculture). Agricultural experiment stations in United States. [Apr. 3, 1901.] 11 pp. 8° (Circular 44 revised.)

— Effect of severe and prolonged muscular work on food consumption, digestion, and metabolism, by W. O. Atwater and H. C. Sherman; and Mechanical work and efficiency of bicyclers, by R. C. Carpenter. 1901. 67 pp. 3 il. 8° (Bulletin 98.)

Foreign Markets Section (Department of Agriculture). Our trade with Scandinavia, 1890-1900; by Frank H. Hitchcock. 1901. 124 pp. 8° (Bulletin 22.)

Shipment 35

Congress. 56th Congress, 1st session. House documents, v. 107. No. 713; Labor Department, 14th annual report, 1899. (Serial no. 4004.)

Shipment 36

Congress. 56th Congress, 1st session. House documents, v. 79. Nos. 264-323, except 287, 298, 300, 314; Transactions with national banks; miscellaneous. (Serial no. 3976.)

Shipment 37

Congress. 56th Congress, 1st session. House documents, v. 91. Nos. 451-504, except 460, 476, 481, 496, 500; Reformatory system in U. S.; miscellaneous. (Serial no. 3988.)

Shipment 38

Congress. 56th Congress, 1st session. House documents, v. 114. No. 733; American Historical Association report, 1899, v. 1. (Serial no. 4011.)

Shipment 39

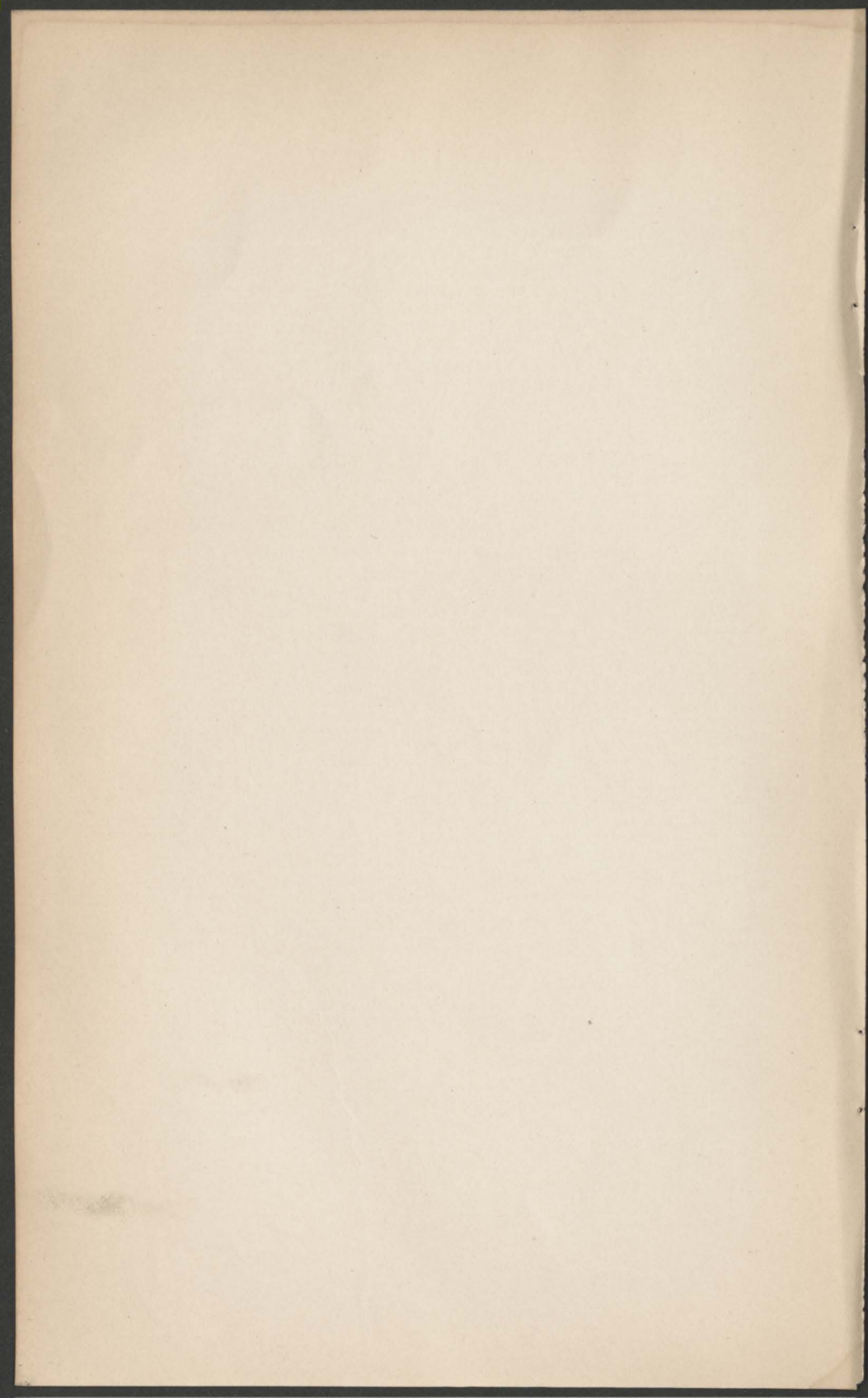
- Agrostology Division (Department of Agriculture). List of publications of division. [June 12, 1901.] 8 pp. 8° (Circular 36.)
- Experiment Stations Office (Department of Agriculture). Proceedings of 14th annual convention of Association of American Agricultural Colleges and Experiment Stations, New Haven and Middletown, Conn., Nov. 13-15, 1900. 1901. 192 pp. 3 pl. 8° (Bulletin 99.)
- Military Information Division (Adjutant-General, War Department). Notes of military interest for 1900. Jan. 1901. 262 pp. 27 il. 15 pl. 12 maps, 8 in pocket, 1 tab. 8° ([Publication] 32.)
- Navigation Bureau (Navy Department). List and station of commissioned and warrant officers of Navy and Marine Corps on active list, July 1, 1901. 113 pp. 8°
- Publications Division (Department of Agriculture). Monthly list of publications [of Department of Agriculture], June, 1901. 4 pp. 8°

Shipment 40

- Agriculture, Department of. Progress of beet-sugar industry in United States in 1900. 1901. 178 pp. 8° (Report 69.)
- Agrostology Division (Department of Agriculture). *Aristida purpurea* Nutt. and its allies. May 24, 1901. 8 pp. 8° (Circular 34.)
- Cultivated vetches. [Apr. 15, 1898.] 8 pp. 6 il. 8° (Circular 6 revised.)
- Botany Division (Department of Agriculture). List of publications of division. [May 17, 1901.] 10 pp. 8° (Circular 30.)
- Forestry Division (Department of Agriculture). Forest working plan for township 40, Totten and Crossfield purchase, Hamilton County, New York State forest preserve, by Ralph S. Hosmer and Eugene S. Bruce; preceded by Discussion of conservative lumbering and water-supply, by Frederick H. Newell. 1901. 64 pp. 11 pl. 4 maps, 8° (Bulletin 30.)
- Geological Survey (Interior Department). Geologic atlas of United States, Spanish Peaks folio, Colo. Library edition. 1901. 7 pp. 2 il. 1 pl. 2 pp. of pl. 6 maps, large 4° (Folio 71.)
- Vegetable Physiology and Pathology Division (Department of Agriculture). New wheat industry [macaroni wheat] for semiarid west. [June 28, 1901.] 8 pp. 2 il. 8° (Circular 18.)

Shipment 41

- Congress. Statutes at Large, Dec. 1899-Mar. 1901, and recent treaties, conventions, executive proclamations, and concurrent resolutions; edited under direction of Secretary of State. 1901. v. 31, L+ [1] + 2167 pp.



INDEX

TO THE CATALOGUE FOR JULY, 1901

[Names of Senators, Representatives, and Delegates in Congress are printed in *Italics*.]

	Page		Page
Aborigines, <i>see</i> Indians.		Arizona, agriculture	347
Abrasive materials	349	manufactures	347
Accounts and Disbursements Division	343	population	347
Acts, <i>see</i> Laws.		San Francisco Mts. forest reserves	347
Actuary, Govt., <i>see</i> Govt. Actuary.		Arkansas, population	347
Addington, Ind. T., topog. sheet	350	Army	364
Adjutant-general	364	enlistment	364
Advance sheets of consular reports	357	officers, list of	364
Africa, German east	357	ration tables	365
south, mahogany in	358	stations	364
west	357	Artace punctistriga	344
west, cotton	359	Artillery, field, rapid-fire	349
Agricultural colleges	344	Asbestos, production, 1899	349
Agricultural Colleges, Assoc. of	344	Asparagus	344
Agricultural education	344	Asphaltum, production, 1899	349
Agricultural experiment stations	344	Assay Commission	363
Agricultural machinery	357	Assay office, Vancouver	357
Agriculture, Arizona	347	Assoc. of Agricultural Colleges	344
indexing literature of	344	Atlantic Ocean, pilot chart	355
methods of teaching	344	Atlases, <i>see</i> Maps and charts.	
relation of plant physiology to	345	Auditor for Treasury Department	361
university extension in	344	Auditor for War Department	361
Agriculture Department	343	Australasia, copper ore	358
publications of	346	Austria, builders' association	357
Yearbook, 1899	342	coal	359
Agromyza simplex Loew	344	copper ore	358
Agrostology Division	345	corals	357
Air-compressors, Rand	355	grain futures, dealings in	358
Alabama, plant life of	345	Automobiles, Europe	357
population	347	exposition of, at Brussels	359
Alaska, population	347	Awo Shima	354
reindeer in, 9th report on	342	Awo Shima Hakuchi	354
tin	349	Bananas, meal from	357
Alcohol, as fuel	359	Banks, <i>see</i> National banks.	
Alikchi, Ind. T., topographic sheet	350	Barite, production, 1899	349
Almonds	357	Barrels, Argentina	357
Aluminum, production, 1899	348	Barytes, <i>see</i> Barite.	
America, <i>see</i> South America.		Base apparatus	361
America Bay	354	Batavia, quinine	358, 360
Amer. Historical Assoc., rp., 1899, v. 1.	342	Baths, public, in Europe	367
American Republics Bureau	357	Bauxite, New South Wales	357
report, 1899	342	production, 1899	348
Animal industry, statistics, 1900	343	Bees	343
<i>see also</i> Animal Industry Bureau.		Beet sugar	345
Animal Industry Bureau	343	progress in U. S., 1900	343
orders	343	utilization of waste	360
Annapolis, Md., <i>see</i> Naval Academy.		Belgium, government savings bank	360
Antimony, production, 1899	348	railway brake	360
Antlers, Ind. T., topographic sheet	350	Beverages, in Paris	358
Antofagasta and Bolivia Ry. Co	357	Bibliography, of agric. bibliographies	344
Apache Indians	343	of geology of Philippines	348
<i>see also</i> Kiowa and Comanche Res.		of mitering lock-gates	364
Appointments Division	360	<i>see also</i> Catalogue.	
Appraisers	361	Bicyclists, mechanical work of	344
decisions	361	Bingham Canyon, Utah, topog. sheet	351
Appropriations, annual, use of	343	Biological Survey Division	343
<i>see also</i> bureaus and objects.		Biology, <i>see</i> Biolog. Survey Division.	
Argentina	357	Birds, effect of, on orchards	343
barrels	357	nestling, food of	343
textiles	359	Bituminous rock	349
trade outlook	359	Bolivia	357

	Page		Page
Bonds of United States	362	Chefoo, cable service.....	357
<i>see also</i> Loans and Currency Division.		Chemistry Bureau	343
Bookkeeping and Warrants Division	361	Chestertown, Md., topographic sheet	350
Borneo, Chinese settlement	358	Chicago, Ill., anchorage of vessels	363
Boston, Mass., fishery products	366	map.....	365
Boston Navy-Yard, <i>see</i> Charlestown.		Chickens, <i>see</i> Poultry.	
Botany Division	345	Chief of Engineers, <i>see</i> Engineer Department, Army.	
Boundaries, of territorial acquisitions	347	Chile.....	357
Boxes, factory in Japan	358	copper ore	358
Boys, enlistment of, in Navy	353	treaty with Nicaragua	359
Brazil	357	China, American trade in	358
Breadstuffs, exports	363	natives in Borneo	358
Bremerton, Wash., naval station, <i>see</i> Puget Sound Navy-Yard.		Cigar-wrapper leaf	344
British, <i>see</i> Great Britain.		Circuit courts, <i>see</i> Courts of U. S.	
British Columbia, mineral production	359	Circulars, <i>see</i> Dept., etc., issuing them.	
salmon fisheries	360	Circulation of currency	362
British Guiana, kaolin	358	Citrus trees, mite enemies	344
resources of	359	Civil Service Commission	366
Bronze powder, Germany	357	Civil War, official records	342
Brussels, expos. of automobiles	359	Claims, against foreign governments	342
Buffalo, N. Y., exposition, <i>see</i> Pan-American Exposition.		War with Spain	342
map	364	<i>see also</i> names of claimants.	
Builders' association, Austria	357	Claremore, Ind. T., topographic sheet	350
Bulgaria, oil of roses	358	Clay, at Paris Exposition, 1900	349
Bulletins, <i>see</i> Farmers' bulletins—bureaus issuing bulletins.		production, 1899	349
Burley tobacco	345	Clearance of vessels	357
Cables, service at Chefoo	357	Climate and Crop Bulletin	346
to Tampico	357	Coal, American, in Europe	358
Calcutta, museum of Amer. goods	357	American <i>vs.</i> Welsh	359
California, fruit, competition with Spain	359	Austria	359
population	347	Germany	359
Calumet Harbor	365	Hungary	359
Camden, N. J., topographic sheet	350	on army transports	365
Canada, copper ore	358	production, 1899	348
petroleum	360	storage of, Portsmouth Navy-Yard	355
preservation of wood	359	Vancouver	359
railway subsidies	359	Coast and Geodetic Survey	361
unexplored region	359	Coast pilots	361
Canals, Austria	357	Cobalt, production, 1899	349
Germany	357	Cocoanuts in South America	358
Ontario	358	Coffee, Costa Rica	358
public lands	347	Coinage	363
Russia	359	Coins, foreign	363
<i>see also</i> Deep Waterways Board—names of canals.		Coke, briquettes in Germany	358
Canary Islands, imports of	357	production, 1899	348
Cancellation of beer stamps	362	Colleges, agricultural	344
Cane-sugar, <i>see</i> Sugar.		Colombia	357
Cankerworms, to prevent, on trees	345	boundary with Costa Rica	357
Cannon, for preventing frost	359	railroads	359
Cape, <i>see</i> name of cape.		Colorado, population	347
Cape Colony, American trade in	357	Comanche Indians	343
copper ore	358	<i>see also</i> Kiowa and Comanche Res.	
Capitol, rules for Senate wing	341	Commerce, <i>see</i> Exports—Imports—names of countries and places.	
Caracas, portable houses	358	Commerce and Finance, Monthly Summary	363
Caribe, Venezuela	357	advance sheets	363
Cascade Range forest reserve	342	Commerce and Navigation, 1900	363
Catalogue, of copyrights	367	Commercial plant introduction	346
of library of Govt. Printing Office	366	Commercial travelers, Hungary	358
of public documents	366	Commissary-general, <i>see</i> Subsistence Department.	
of publications of Geolog. Survey	348	Compressors, air	355
Cattle, dairy	344	Comptroller of currency	362
hides, disinfection of	360	Concurrent resolutions	341
transportation of	343	Condition of Treasury, <i>see</i> Treasury.	
Cement, American rock	349	Confederates, <i>see</i> Civil War.	
Peru	357	Congress	341
Portland	349	Congressional documents, bound volumes	342
Census bulletins, <i>see</i> Census Office.		Congressional Library, <i>see</i> Library of Congress.	
Census Office	347	Congressional Record	341
Central America, <i>see</i> American Republics Bureau.		Connecticut, population	347
Cereals, <i>see</i> Grain.		Connecticut Experiment Station	344
Chain shackles, iron pins for	354	Consols, <i>see</i> Bonds.	
Charlestown Navy-Yard	355	Constitution, Fort, ordnance property	365
Charts, <i>see</i> Maps and charts.		Consular Reports	359
		advance sheets	357

Page	Page
Contributions from Nat. Herbarium.. 345	District of Columbia Com., Senate 341
Conventions with foreign nations.... 341	Documents, bound volumes..... 342
Copper, Germany..... 359	distributed by Smithsonian Institu- tion..... 365
production, 1899..... 348	monthly catalogue..... 366
reduction of ore..... 358	relating to claims, list of..... 360
Copra, in South America..... 367	shipments to depositories..... 369
Copyright Office..... 367	Documents, Superintendent of, <i>see</i> Documents Office.
Copyrights, catalogue of..... 357	Documents Office..... 366
Córdoba, Argentina..... 357	Drawing, mechanical..... 345
Corn, Mexico..... 357	Dredging, New York Navy-Yard..... 356
Netherlands..... 359	Ducks, standard breeds..... 343
Cornell University..... 344	Dutch, <i>see</i> Netherlands.
Corps of Engineers, <i>see</i> Engineer Dept., Army.	East Indies, trade in..... 358
Costa Rica..... 357	Ecuador..... 357
coffee..... 358	Education, agric., <i>see</i> Agricultural, modern..... 344
Cotton, exports..... 363	<i>see also</i> Education Bureau.
west Africa..... 359	Eggs, preservation of, in Germany.... 358
Cotton goods, Germany..... 358	Egypt, starch trade..... 359
Russia..... 358	Elcájon, Cal., topographic sheet..... 349
Court-martial orders..... 353	Electric light, for seacoast forts..... 364
Courts-martial, <i>see</i> Court martial or- ders.	Electric plants, for seacoast forts..... 364
Courts of U. S., patent decisions..... 352	India..... 359
Crabs, exports from Russia..... 358	Electric railroads, Germany..... 359
Crop Bulletin..... 346	public lands..... 347
Crop Reporter..... 346	Saxony..... 359
Crops, Germany..... 359	Electric vehicles, <i>see</i> Automobiles.
statistics, 1900..... 343	Elizabethtown, N. Y., topographic sheet..... 350
Cuba..... 357	Elreno land district..... 348
commerce..... 365	Employees, protection of..... 367
tariff..... 342	under common law..... 367
Currency, <i>see</i> Comptroller of curren- cy—Loans and Currency Divi- sion—Treasurer of United States.	Employer, liability of, in U. S..... 367
Currimao Harbor..... 354	under common law..... 367
Customs and Insular Affairs Division, <i>see</i> Insular Affairs Division.	Engineer Corps, <i>see</i> Engineer Dept., Army.
Customs Division..... 360, 361	Engineer Department, Army..... 364
Customs duties, <i>see</i> Tariff—names of articles imported.	Engineering experiment stations..... 344
Cyprus, commerce of..... 358	Engines, gas, in Denmark..... 358
Dahomey..... 358, 359	England, <i>see</i> Great Britain.
Daily postal bulletin..... 356	Enlistment, Army..... 364
Dairy cattle..... 344	of boys in Navy..... 353
Dairy Division..... 343	of machinists in Navy..... 355
Dairy industry, <i>see</i> Dairy Division.	Entomology, <i>see</i> Entomology Divi- sion—Insects.
Dallas Exposition..... 360	Entomology Division..... 343
Daly, William D..... 341	Entry of vessels..... 357
Debt, <i>see</i> Public debt.	Equator crossings, <i>see</i> Pilot charts.
Decisions, land..... 347	Equestrian statuary..... 341
patents..... 352	Equipment Bureau..... 354
pension..... 346	Escondido, Cal., topographic sheet..... 349
Treasury..... 361	Europe, American coal..... 358
Decorative art, exposition of..... 358	American textiles..... 360
Deep Waterways Board..... 364	automobiles in..... 357
Delaware, manufactures..... 347	banana meal, market for..... 357
population..... 347	mileage of railroads..... 359
Dempsey, P. J..... 364	municipal railroads..... 359
Denmark, gas engines..... 358	public baths..... 367
Department stores, Germany..... 359	<i>see also</i> names of countries.
Depositories, shipments to..... 369	Examinations, civil service..... 366
Derrick, floating..... 356	for Military Academy..... 364
Designs, <i>see</i> Official Gazette.	Executive proclamations..... 341
Dessan, exhibition at..... 358	Expenditures..... 361
Digestion..... 344	<i>see also</i> names of Depts., etc.
Diplomatic list..... 356	Experiment Station Record..... 344
Disbursements, <i>see</i> Expenditures.	Experiment Station Work..... 344
Disbursing officers, Porto Rico..... 363	Experiment stations, agricultural, <i>see</i> Agric. experiment stations.
Diseases, fruit, spraying for..... 345	Experiment Stations Office..... 344
of plants, sulphur for..... 359	Explorations, Bolivia..... 357
Disinfection of hides..... 360	Exports..... 363
District courts, <i>see</i> Courts of U. S.	<i>see also</i> countries and places.
District of Columbia..... 365	Expositions, <i>see</i> names of expositions— places where held.
funded indebtedness..... 363	Fabrics, <i>see</i> Textiles.
graduate study..... 344	Farm animals, <i>see</i> Live stock.
maps..... 348	Farmers' bulletins..... 343, 345
navy-yard..... 355	Farmville, Va., topographic sheet..... 351
population..... 347	
<i>see also</i> D. C. Com., Senate.	

	Page		Page
Feed, of sheep.....	345	Geologic atlas of United States.....	348
Feldspar, production, 1899.....	349	Geological Survey.....	348
Fertilizers, uniform laws.....	344	Geology, <i>see</i> Geological Survey.	
Figs, Smyrna, culture of.....	344	Georgia, population.....	347
Filipinos, <i>see</i> Philippines.		Germany, alcohol as fuel.....	359
Finance, Commerce and, Monthly Summary, <i>see</i> Commerce and Fi- nance, Monthly Summary.		American manufactures in.....	359
Fish Commission.....	366	American preserves.....	360
Fisheries, pearl, Venezuela.....	358	American trade with.....	358
products landed at Boston and Gloucester.....	366	bronze powder.....	357
salmon, British Columbia.....	360	canals.....	357
seal.....	360	coal.....	359
Fishes, collected by P. L. Jouy, list of.....	366	coke briquettes.....	358
<i>see also</i> Fish Commission.		commercial association in Japan.....	358
Flume, water route to Stettin.....	360	copper.....	359
Flora, <i>see</i> Plants.		copper ore.....	358
Florida, economic entomology.....	344	crops.....	359
population.....	347	department stores.....	359
Fluorspar, production, 1899.....	349	eggs, preservation of.....	358
Foods, available energy of.....	344	electric railroads.....	359
muscular work and consumption of.....	344	foreign commerce, 1900.....	359
potatoes.....	345	furniture.....	359
supply of, in Paris.....	358	glass-blowing.....	358
vegetable, insects affecting.....	344	Haiti, customs war with.....	359
<i>see also</i> Feed.		industrial situation in.....	358
Forage plants, investigat ons.....	344	life-saving apparatus.....	359
Foreign coins, <i>see</i> Coins, foreign.		meat inspection.....	359
Foreign Commerce and Navigation, 1900.....	363	mercerized cotton.....	358
Foreign Commerce Bureau.....	357	new fuel.....	358
Foreign Mail Service.....	356	silkworms.....	359
Foreign Markets Section.....	346	smoke-consuming furnaces.....	359
Foreign relations, 1895-97, references to claims in.....	360	South American trade.....	359
1898.....	342	steamship line to South America.....	360
Foreign Relations Committee.....	342	Suez Canal, traffic in.....	359
Forest reserves, right of way.....	347	tariff.....	358
<i>see also</i> names of reserves.		trade methods in.....	359
Forests, Guatemala.....	357	woolen yarn.....	360
Fort Worth, Tex., Polk Stock-Yards.....	343	Glacier Peak.....	351
Fort, <i>see</i> names of forts.		Glass-blowing by compressed air.....	358
Fossils, tertiary, in Philippines.....	348	Gloucester, Mass., fishery products.....	366
Fowls, <i>see</i> Poultry.		Gold, production, 1899.....	348
Framingham, Mass., topog. sheet.....	350	Samea.....	359
France, Amer. trade, how to create.....	359	world's production.....	357
copper ore.....	358	Goose, <i>see</i> Geese.	
spraying machines.....	359	Gosport Navy-Yard, <i>see</i> Norfolk.	
Frankfort, life-saving service expos.....	358	Government Actuary.....	362
Freezing, <i>see</i> Frost.		Government bonds, <i>see</i> Loans and Cur- rency Division.	
Freight, rates, 1900.....	343	Govt. documents, <i>see</i> Documents.	
French, <i>see</i> France.		Government Printing Office.....	366
Frost, prevention of.....	359	Graduate study at Washington.....	344
Fruit, Californian vs. Spanish.....	359	Grain, dealings in futures.....	358
exhibit of, at Moscow.....	358	exports from Turkey.....	358
preserving of.....	358	exports, from Persia.....	358
spraying for diseases of.....	345	Grand Teton, <i>see</i> Hayden, Mount.	
Fuel, new, in Germany.....	358	Grant Nat. Park, <i>see</i> Sequoia and Gen. Grant National parks.	
Spanish exposition of.....	359	Graphite.....	348
Fuller's earth, production, 1899.....	349	production, 1899.....	349
Furniture, Germany.....	359	Grasses, investigations.....	344
Gardens, for schools.....	360	<i>see also</i> Agrostology Division.	
<i>see also</i> Horticulture.		Gravity.....	361
Gas, Lucas light.....	358	Grays Harbor, Wash.....	361
natural, production, 1899.....	349	Great Britain, copper ore.....	358
Gas-engines, Denmark.....	358	locomotives in Jamaica.....	359
Gate City, Va., topographic sheet.....	350	sale agents.....	359
Geese, standard breeds.....	343	South American trade.....	357
General Appraisers.....	361	tenure of property.....	356
decisions.....	361	Great Lakes, canals to Atlantic Ocean.....	364
General Grant Nat. Park, <i>see</i> Sequoia and Gen. Grant Nat. parks.		Greatfalls, Mont., topographic sheet.....	350
General Land Office, <i>see</i> Land Office, General.		Guatemala.....	357
General orders, adjutant-general.....	364	Gulf, <i>see</i> name of gulf.	
adjutant-general, 1881-1900, index.....	364	Gutta-percha.....	360
Engineer Department.....	364	Gypsum, production, 1899.....	349
Navy Department.....	353	Hagfish.....	366
Revenue Cutter Service.....	363	Haiti, customs war with Germany.....	359
Geodesy.....	361	Hamada, Japan.....	354
		Hamburg-American Steamship Co.....	358
		Harmer, Alfred C.....	341
		Harney Peak.....	351
		Harput, exhibit of American goods.....	358
		Harrisonburg, Va., topographic sheet.....	351

	Page		Page
Hawaii, flora of	357	Inventions, <i>see</i> Patents.	
population	347	Inventory reports of Quartermaster's	
Hayden, Mount	351	Dept	365
Haywards, Cal., topographic sheet	349	Iowa, population	347
Health Reports, <i>see</i> Public Health Rps.		Iron, Amer. and foreign trade, 1899	348
Heating, exposition of appliances	359	Iron ore, production, 1899	348
Hennepin, Ill., topographic sheet	349	Iron pins for chain shackles	354
Herbarium, Nat., contributions from	345	Iron rivets	355
Hides, of cattle	360	Irrigation, practical	344
Hindustan, <i>see</i> India.		Irrigation papers	351
Hirasawa Wan.	354	Islands, <i>see</i> names of islands.	
History, <i>see</i> Amer. Historical Assoc.		Italy, sulphur for plant diseases	359
Hogs, raising of, in South	343	treaty with Bolivia	357
Holland, <i>see</i> Netherlands.		Japan, box factory	358
Homestead	347	copper ore	358
Indian lands	347	exposition in	358
Honshu	354	fishes of	366
Horticulture	345	German commercial association	358
House of Representatives	342	investments of capital	359
Journal of	342	kerosene	358
Household insects	344	land titles	359
Houses, portable, in Caracas	358	Java, steamboats to America	359
Hungary, coal	359	Journal, House	342
commercial travelers	358	Journalism, Argentina	357
industrial progress	359	Kamo Ko	354
<i>see also</i> Austria.		Kanawha Falls, W. Va., topog. sheet	351
Hurricane, on Newfoundland coast	355	Kansas, population	347
Hydrocyanic-acid gas	345	Kaoilin, British Guiana	358
Hydrographic bulletin	354	Kentucky, population	347
Hydrographic Office	354	Kern River	351
Hydrography	361	Kerosene, <i>see</i> Petroleum.	
Hydrography Division	351	Kiel, dock plants at	359
Iceland, shipping facilities to	358	Kiowa and Comanche Res.	347, 348
Idaho, manufactures	347	Kiowa Indians	343
population	347	Klondike, <i>see</i> Yukon region.	
Illinois, nursery inspection	345	Korea, foreign enterprises	359
population	347	new railway	358
Immigration, decisions	361	La Abra Silver Mining Co	342
Import tax, <i>see</i> Tariff—names of arti-		Labels, <i>see</i> Official Gazette.	
cles imported.		La Boca, Colombia, wharf at	358
Imports	363	Labor, Internat. Office, Switzerland	359
<i>see also</i> countries and places.		navy-yards	354
Index, to General orders of adjutant-		<i>see also</i> Labor Department.	
general, 1881-1900	364	Labor Department	366
to publications of Geolog. Survey	348	report, 1899	342
Indexing agricultural literature	344	Laboratories, portable	362
India, electric plants	359	Laboratory work in horticulture	345
mangoes	358	Lake survey charts, <i>see</i> Northern and	
match trade	358	Northwestern Lakes Survey.	
wheat crop	359	Lakes, <i>see</i> Great Lakes—names of	
India rubber, <i>see</i> Rubber.		lakes.	
Indian corn, <i>see</i> Corn.		Lampreys, of Japan	366
Indian lands	347, 348	Lancelets	366
Indian Territory, manufactures	347	Land decisions	347
population	347	Land-grant colleges, <i>see</i> Agric. col-	
Indiana, population	347	leges.	
Indians, <i>see</i> Indian—names of reserva-		Land Office, General	347
tions and tribes.		decisions	347
Industrial Commission	366	Lands, public, <i>see</i> Public lands.	
Insecticides	345	tenure of	356
Insects, effect of petroleum on	345	titles to, in Japan	359
hydrocyanic-acid gas for	345	La Plata Mountains	348
in Florida	344	Latin America, <i>see</i> American Repub-	
scale	345	lics Bureau.	
study of, in South	344	Latitude	361
<i>see also</i> Entomology Division.		Laws	341
Inspection, of meat in Germany	359	copyright	367
of orchards	345	fertilizer	344
Inspection reports of Quartermaster's		Germany, department stores	359
Dept	365	Germany, meat	359
Inspectors of steam vessels	360	Hungary, commercial travelers	358
Insular Affairs Division	365	internal revenue	362
Insular possessions, <i>see</i> names of		Japan, land titles	359
islands.		nursery inspection	345
Interior Department	346	Russia, foreigners	359
Internal revenue, decisions	361	Salvador, patents	357
<i>see also</i> Internal Revenue Office.		Lawton land district	348
Internal Revenue Office	362	Lead, production, 1899	348
Internat. American Conference	357	Legislation, <i>see</i> Laws.	
International Labor Office	359	Leveling	361
Internat. Union of Amer. Republics	357	Library of Congress	367

	Page		Page
Library of Govt. Printing Office	366	Military Information Division.....	364
Liege, trade with United States.....	359	Military notes, 1900.....	364
Lieutenant-gen. commanding Army, report 1900.....	364	Military posts, <i>see</i> names of forts.	
Life-saving apparatus, German.....	359	Military schools, <i>see</i> Military Acad- emy—Military training.	
Life-saving service, expos. for.....	358	Military training, land-grant schools.	345
Light-House Board.....	362	Mineral oils, <i>see</i> Petroleum.	
Lighthouses, <i>see</i> Light-House Board— names of places.		Mineral paints.....	349
Lights, for torpedo boats.....	354	Mineral resources, 1899.....	348
<i>see also</i> Beacons—names of places.		Mineral waters.....	349
Live stock, plants poisonous to.....	345	Mining, British Columbia.....	359
statistics, 1900.....	343	Minnesota, U. S. S.....	353
<i>see also</i> Cattle—Hogs—Sheep.		Mint Bureau.....	363
Liverpool, medical fellowship.....	359	Mite enemies of citrus trees.....	344
Loans and Currency Division.....	362	Molybdenum, production, 1899.....	349
Lock-gates, bibliography of.....	364	Money, <i>see</i> Comptroller of Currency— Loans and Currency Division— Treasurer of United States.	
Locomotives, in Jamaica.....	359	Monographs on social economics.....	367
Loire River.....	358	Monthly Summary of Commerce and Finance, <i>see</i> Commerce and Fi- nance, Monthly Summary.	
London, market for salmon.....	360	Mooring slips, Norfolk Navy-Yard....	356
Longitude.....	361	Morocco, trade with Rouen.....	359
Loschwitz, Saxony.....	358	Morrill, Justin S.....	345
Louisiana, population.....	347	Moscow, fruit exhibit.....	358
Lucas gaslight.....	358	trade with United States.....	358
Macaroni, wheat for.....	345	Mosquitoes.....	344
Machinists, enlistment of, in Navy ..	355	Motor-carriages, <i>see</i> Automobiles.	
Magnetism.....	361	Mount, <i>see</i> name of mountain.	
Mahogany, south Africa.....	358	Municipal railroads, Europe.....	359
Mail service, <i>see</i> Postal service.		Murphy, N. C., topographic sheet....	351
Maine, population.....	347	Muscular work and food consumption.	344
Maize, <i>see</i> Corn.		Nagahama Harbor.....	354
Manchester, England, exports to U. S.	358	National banks.....	342, 362
Manganese ores, production, 1899....	348	National Herbarium, contributions from.....	344
Mangoes, in India.....	358	National Museum.....	366
Mannheim, Amer. manufactures in ..	359	National Soldiers' Home.....	367
Manufactures, <i>see</i> Census Office.		report, 1899.....	342
Manuring, <i>see</i> Fertilizers.		Natural gas, production, 1899.....	349
Maps and charts, Coast Survey	361	Naval Academy.....	355
Geological Survey.....	349	Navigation, decisions.....	361
Hydrographic Office.....	354	Navigation, Foreign Commerce and, for 1900.....	363
Land Office.....	348	Navigation Bureau.....	355
Northern and Northwestern Lakes Survey.....	364	Navy, enlistment of boys in.....	353
Weather Bureau.....	346	enlistment of machinists.....	355
Marine Corps, officers, list of.....	355	officers, list of.....	355
Marine Hospital Service.....	362	uniforms for.....	353
Mariners, Notice to, <i>see</i> Notice to Ma- riners.		Navy Department.....	353
Marines, <i>see</i> Marine Corps.		Navy-yard orders.....	354
Marshall, Ark., topographic sheet	349	Navy-yards, <i>see also</i> Navy-yard orders.	
Maryland, population.....	347	Netherlands, corn.....	359
Mashike Hakuchi.....	354	new method of building in.....	358
Massachusetts, population.....	347	Nevada, manufactures.....	347
Matches, in India.....	358	tungsten ore.....	349
Meal, banana.....	357	New Granada, <i>see</i> Colombia.	
Meat, Argentine trade.....	357	New Mexico, manufactures.....	347
German inspection law.....	359	New South Wales, bauxite.....	357
Mechanic arts.....	345	New York Navy-Yard.....	356
Mechanical colleges, <i>see</i> Agric. col- leges.		Newfoundland, hurricane on coast....	355
Mechanical drawing.....	345	Nezugaseki Ko.....	354
Medical fellowship, Liverpool.....	359	Niagara River.....	364
Mediterranean Pilot.....	354	Nicaragua.....	357
Men on horseback.....	341	cart-road concessions.....	359
Mercerized cotton, Germany.....	358	treaty with Chile.....	359
Merchant marine, <i>see</i> Shipping.		Nickel, production, 1899.....	349
Merchant vessels, <i>see</i> Shipping.		Nile River, improvements on.....	360
Mercury, <i>see</i> Quicksilver.		Norfolk Navy-Yard.....	356
Message of President, <i>see</i> President.		Northern and Northwestern Lakes Survey.....	364
Metabolism in human body.....	344	Northern Pacific land grant.....	348
Metal-workers' school, Saxony.....	358	Norway, copper ore.....	358
Metals, production, 1899.....	348	Notice to Mariners, Coast Survey	361
Mexico.....	357	Hydrographic Office.....	354
copper ore.....	358	Light-House Board.....	362
Mexico City, Internat. Amer. Confer- ence.....	357	Nowata, Ind. T., topographic sheet....	350
Mica, production, 1899.....	349	Nursery inspection.....	345
Michigan, Lake, map.....	365	Nutrition, <i>see</i> Foods.	
Midway Islands.....	355	Obato Wan.....	354
Military Academy, examinations for.	364		
Military establishment, <i>see</i> Army.			

	Page		Page
Officers, Engineer Corps	364	Plants, physiology of	345
Pay Department	365	<i>see also</i> Plant Industry Bureau.	
Quartermaster's Department	365	Plymouth Rock fowls	343
Revenue Cutter Service	363	Point, <i>see</i> name of point.	
Subsistence Department	365	Poisonous plants	345
<i>see also</i> Army—Marine Corps—Navy.		Polk Stock-Yards	343
Official Gazette	352	Population	362
Official Postal Guide	356	<i>see also</i> Census Office.	
Oil, mineral, <i>see</i> Petroleum.		Portland, Oreg., topographic sheet	350
Oil of roses, in Bulgaria	358	Portland cement	349
Oklahoma, Indian lands	347, 348	Porto Rico	363
manufactures	347	merchandise from, revenue tax	362
Olympic forest reserve	342	tariff	342, 360
Ontario, canals	358	Portsmouth Navy-Yard	355
Orchards, effect of birds on	343	Post-Office Department	356
inspection of	345	Postal bulletin, daily	356
Orders, <i>see</i> Animal Industry Bureau—		Postal Guide, Official	356
Court-martial—General—Navy—		Postal service, orders	356
Yard—Ordnance Dept.—Postal		Posts, military, <i>see</i> names of posts.	
service—Signal Office—Special		Potatoes, as food	345
orders.		Pottsville, Pa., topographic sheet	350
Ordnance, <i>see</i> Ordnance Bureau—		Poultry, American breeds of	343
Ordnance Department.		standard varieties	343
Ordnance Bureau	355	Precious stones, production, 1899	349
Ordnance Department	365	Preserves, American, in Germany	360
Ornithology, <i>see</i> Birds.		President of United States	342
Pachita River Valley	357	message, 1898	342
Pacific Ocean, pilot chart	355	messages, 1895-97, references to	
Packing goods for export	358	claims in	360
Paints, mineral	349	Prince Frederick, Md., topog. sheet	350
Palestine, wagon roads in	358	Printing, Argentina	357
Pan-American Expos., ordnance at.	355	Private laws, <i>see</i> Laws.	
Paper currency	363	Proclamations, executive	341
Paraguay	357	Professional papers of Engineer Corps.	364
Paris, food and drink supply	358	Property, real and personal	356
Paris Exposition, clay products	349	Protractor, three-arm	354
dairy products	343	Provisions, exports	363
experiment stations' exhibit	345	Prussia, new railroads	358
Park improvement papers	341	Pryor Creek, Ind. T., topog. sheet	350
Parks, in District of Columbia	341	Public baths, in Europe	367
<i>see also</i> names of existing parks.		Public debt	360
Patent Office	352	Public documents, <i>see</i> Documents.	
Patentees, quarterly list	352	Public Health Reports	362
Patents, decisions	352	Public lands, decisions	347
quarterly list	352	<i>see also</i> Land Office, General.	
Salvador	357	Public laws, <i>see</i> Laws.	
specifications	352	Public Printer, <i>see</i> Govt. Printing	
Patience, Cape	355	Office.	
Pay, <i>see</i> Pay Department, Army.		Public Road Inquiries Office	346
Pay Department, Army	365	Public schools, <i>see</i> Schools.	
Paymaster-gen., Army, <i>see</i> Pay Dept.		Publications, of Agriculture Dept.	346
Pearl fisheries, Venezuela	358	of Agrostology Division	345
Pensions, decisions	346	of Geological Survey	348
Persia, customs administration	358	Publications Division	346
grain exports	358	Puerto Cabello, wharf improvements.	358
Persian Gulf, trade in	358	Puerto Rico, <i>see</i> Porto Rico.	
Personal property	356	Puget Sound naval station, <i>see</i> Puget	
Peru	357	Sound Navy-Yard.	
cement	357	Puget Sound Navy-Yard	356
Petroleum, Canada	360	Pyrite, production, 1899	349
effect on plants and insects	345	Quartermaster-general, <i>see</i> Quarter-	
exports	363	master's Department.	
Japan	358	Quartermaster's Department	365
production, 1899	349	Quartz, production, 1899	349
Russia	358	Quays, Charlestown Navy-Yard	356
Philippines, commerce	357, 365	Quicksilver, production, 1899	349
geology of	348	Quinine, Batavia	358, 360
homestead for soldiers and sailors.	347	Railroads, Belgium, brakes	360
military operations in	364	Canada, subsidies	359
tariff	342	Chile	357
Phosphate rock, production, 1899	349	Colombia	359
Pickens, S. C., topographic sheet	351	Dahomey	358
Pigs, <i>see</i> Hogs.		Europe, mileage of	359
Pilot charts	355	Korea	358
Pinegrove, Pa., topographic sheet	350	municipal, in Europe	359
Plant Industry Bureau	345	Nicaragua	357
Plants, diseases, sulphur for	359	Prussia and Saxony	358
effect of petroleum on	345	suspension, Loschwitz, Saxony	358
introduction of	345, 346	<i>see also</i> Electric railroads—Freight.	
of Hawaii	357	Railway Mail Service	356
originating varieties of	345	Railways, <i>see</i> Railroads.	

	Page		Page
Rainfall, <i>see</i> Climate and Crop Bulletin.		Seal fisheries.....	360
Raisins, European.....	359	Seal Island.....	355
Rand air-compressors.....	355	Seamen, <i>see</i> Sailors.	
Rapid-fire field artillery.....	365	Secret Service Division.....	363
Rations, for Army.....	365	Secretary, <i>see</i> , for departmental secretaries, names of Departments.	
Real estate, <i>see</i> Lands.		Securities, U. S., value of.....	362
Reappraisements.....	361	Sedan, Kans., topographic sheet.....	350
Rebellion, <i>see</i> Civil War.		Seed and Plant Introduction Section.....	346
Receipts and expenditures.....	361	Seeds, introduction of.....	345
Reconnaissance.....	361	<i>see also</i> Seed and Plant Introduction Section.	
Record, Congressional.....	341	Senami Hakuchi.....	354
Reformatory system in U. S.....	342	Senate.....	341
Register of copyrights, <i>see</i> Copyright Office.		Sequoia and Gen. Grant Nat. parks.....	347
Registered bonds, <i>see</i> Loans and Currency Division.		Sharps Island, topographic sheet.....	350
Reindeer, in Alaska.....	342	Shasta, Mount.....	349
Representatives, <i>see</i> House.		Sheep, feeding of.....	345
Reservations, Govt., right of way.....	347	Sheep-bound reserve.....	342
Reserves, forest, <i>see</i> Forest reserves.		Shimonoseki, Japan.....	359
Reservoirs, public lands.....	347	Shiokoshi Bana.....	354
Resolutions, concurrent.....	341	Shipments to depositories.....	369
Revenue, <i>see</i> Internal revenue.		Shipping, Chicago.....	363
Revenue Cutter Service.....	362, 363	clearance and entry.....	357
Revenue stamps, <i>see</i> Stamps, revenue.		in fur-seal fishing.....	360
Richmond, Va., topographic sheet.....	351	in St. Marys River.....	360
Right of way, on public lands.....	347	<i>see also</i> Steamboats.	
River stations, operations at.....	351	Shopiere, Wis., topographic sheet.....	351
Rivers, of South America.....	357	Shoshone Lake.....	351
Rivets, iron.....	355	Siam, teak industry.....	360
Road Inquiry Office, <i>see</i> Public Road Inquiries Office.		Signal Office.....	365
Roads, wagon, in Palestine.....	358	Silk, Syrian, for United States.....	360
<i>see also</i> Public Road Inquiries Office.		Silkworms, Germany.....	359
Robben Island.....	355	Silver, production in U. S., 1899.....	348
Rock Creek Park.....	341	world's production.....	357
Rouen, trade with Morocco.....	359	Simanalé Anchorage.....	355
Rubber.....	360	Simplon tunnel.....	360
Rules, standing, for Senate.....	341	Smithsonian Institution.....	365
Russia Committee, Senate.....	341	Smoke, for preventing frost.....	359
Russia, agricultural machinery.....	357	furnaces for consuming.....	359
cotton industry.....	358	Smyrna fig culture.....	344
exports of crabs.....	358	Soap, market for, in Spain.....	360
laws concerning foreigners.....	359	Soapstone, production, 1899.....	349
petroleum.....	358	Social economics, monographs on.....	367
ship canals.....	359	Soldiers, homestead.....	347
tariff.....	359, 360	<i>see also</i> Army.	
trade with United States, 1900.....	360	Soldiers' Home, National, <i>see</i> National Soldiers' Home.	
wheat crop.....	359	Soldiers' Home.....	
Sailing routes, <i>see</i> Pilot charts.		South, entomology in.....	344
Sailors, homestead.....	347	raising of hogs.....	343
<i>see also</i> Navy.		South Africa, <i>see</i> Africa.	
St. Marys River.....	360	South America, cocoanuts and copra.....	358
St. Michael Bay.....	361	German trade.....	359
Sakata, Japan.....	354	steamship line to Germany.....	360
Sale agents in England.....	359	<i>see also</i> Amer. Republics Bureau.	
Salmon, fisheries, British Columbia.....	360	Spain, commerce with Costa Rica.....	357
London market.....	360	copper ore.....	358
Salt, production, 1899.....	349	fruit, competition with California.....	359
Salvador.....	357	fuel exposition.....	359
Salvador Commercial Co. vs. Salvador.....	356	imports of wheat.....	360
Samoan Islands, gold.....	360	soap market.....	360
San Antonio International Fair.....	360	<i>see also</i> War with Spain.	
Sandpoint, Idaho, topographic sheet.....	349	Spanish America, <i>see</i> American Republics Bureau.	
San Francisco Mts. forest reserves.....	347	Spanish-American War, <i>see</i> War with Spain.	
San Juan naval station.....	356	Spanish Peaks.....	348
San Rafael River.....	351	Spanish Treaty Claims Commission.....	360
San Salvador, <i>see</i> Salvador.		Special orders, adjutant-general.....	364
Saunders, William.....	343	Engineer Department.....	364
Savings banks, Belgium.....	360	Navy Department.....	354
Saxony, electric railroads.....	359	Specifications of patents.....	352
metal-workers' school.....	358	Spokane, Wash., topographic sheet.....	351
new railroads.....	358	Spraying, for fruit diseases.....	345
Scale insects.....	343, 345	machines for, France.....	359
Scandinavia, trade of U. S. with.....	346	of asparagus.....	344
School gardens.....	360	Stamps, revenue.....	362
Schools, District of Columbia.....	365	Starch, Egypt.....	359
metal-workers', Saxony.....	358	Statistics Bureau.....	363
<i>see also</i> Education Bureau.		Statistics Division, Agriculture Dept.....	346
Seacoast batteries, electric plants.....	364	Statuary, equestrian.....	341

Page	Page
Statutes, <i>see</i> Laws.....	Treasurer of United States..... 363
Steamboat Inspection Service..... 360	Treasury, condition of..... 360, 361
Steamboats, German..... 360	Treasury decisions..... 361
Germany and South America..... 360	Treasury Department..... 360
Java and America..... 359	Treaties, recent..... 341
mail..... 356	<i>see also</i> names of countries.
<i>see also</i> Steamboat Inspection Ser-	Trees, injury by cankerworm..... 345
vice.	Triangulation..... 361
Stettin, water route to Fiume..... 360	Trucking business, development of..... 344
Stilaguamish River..... 351	Tungsten, production, 1899..... 349
Stone, artificial..... 360	Turin, exposition of decorative art..... 358
production, 1899..... 349	Turkey, exports of cereals..... 358
Stoppage circular..... 365	Tusang Bongao Channel..... 355
Storehouse, Washington Navy-Yard..... 355	Typhoons, east Asiatic waters..... 355
street cars, <i>see</i> Electric railroads.	Tyulenyia Island..... 355
street railroads, <i>see</i> Electric railroads.	Uinta Mountains..... 351
Subsidies, for railroads, in Canada..... 359	Uniforms, for Navy..... 353
Subsistence Department..... 365	United Kingdom, <i>see</i> Great Britain.
Suez Canal..... 359	University extension in agriculture..... 344
Sugar, Mexico..... 357	Uranium, production, 1899..... 349
Sugar-beet, <i>see</i> Beet sugar.	Urban population, 1900..... 347
Sulphur, for plant diseases..... 359	Uruguay..... 357
production, 1899..... 349	Vanadium, production, 1899..... 349
Superintendent of Documents, <i>see</i> Docu-	Vancouver, assay office..... 357
ments Office.	coal..... 359
Supplies and Accounts Bureau..... 355	Various bureaus..... 366
Suspension railroads..... 358	Vegetable foods, insects affecting..... 344
Sweden, school gardens..... 360	Vegetable Physiology and Pathology
Swine, <i>see</i> Hogs.	Division..... 345
Switzerland, Internat. Labor Office..... 359	Vegetables, exhibit of, at Moscow..... 358
Syracuse, N. Y., topographic sheet..... 350	testing commercial varieties..... 345
Syria, American trade with..... 360	Vegetation, <i>see</i> Plants.
silk for United States..... 360	Venezuela..... 357
Tampico, cable to..... 357	pearl fisheries..... 358
Tariff, Cuba..... 342	tobacco..... 359
decisions..... 361	Vessels, <i>see</i> Shipping—Steamboats.
Germany..... 358, 359	Victoria, Australia, gold jubilee..... 358
Haiti..... 359	preserving fruit..... 358
Persia..... 358	Vostok Bay..... 355
Philippines..... 342, 360	Wabuska, Nev., topographic sheet..... 350
Porto Rico..... 342	Wages, compilation of..... 366
Russia..... 359, 360	Wales, coal..... 359
<i>see also</i> names of articles imported.	Walnuts, foreign market..... 359
Teaching, of agriculture..... 344	War Department..... 362
Teak, industry in Siam..... 360	War-revenue act..... 362
Telegraph, public lands..... 347	War with Spain, claims..... 342, 360
Telephone, public lands..... 347	homestead for those serving in..... 347
Temperature, <i>see</i> Climate and Crop	Warfield, Ky., topographic sheet..... 351
Bulletin.	Warren, William J., <i>see</i> District of
Tenure of property..... 356	Columbia.
Terrestrial magnetism, <i>see</i> Magnetism.	Washington, D. C., <i>see</i> District of
Tertiary fossils in Philippines..... 348	Columbia.
Teton, Grand, <i>see</i> Hayden, Mount.	Water, mineral..... 349
Texas, State Fair..... 360	Water-supply papers..... 351
Textiles, American, for Europe..... 360	Waterways, <i>see</i> Canals.
Argentina..... 359	Weather, <i>see</i> Weather Bureau.
Three-arm protractor..... 354	Weather Bureau..... 346
Tides..... 361	Weather map..... 346
Time..... 361	West, semiarid, wheat in..... 345
Tin, Alaska..... 349	West Point, <i>see</i> Military Academy.
Tishomingo, Ind. T., topog. sheet..... 350	Wheat, crop in India..... 359
Titles, to lands in Japan..... 359	crop in Russia..... 359
Tobacco, Agric. Dept. investigations..... 345	for macaroni..... 345
Burley..... 345	growing of, in semiarid districts..... 345
cigar-wrapper leaf..... 344	Spanish imports..... 360
Venezuela..... 359	Wichita forest reserve..... 343
Tobi Shima..... 354	Wichita Indians..... 343
Tobi Shima Byochi..... 354	Wichita Reservation..... 347, 348
Topographic sheets..... 349	Wilkesboro, N. C., topographic sheet..... 350
Topography..... 361	Wood, preserving of..... 359
Torpedo boats, running lights for..... 354	Woolen yarns, Germany..... 360
Trade, <i>see</i> Exports—Imports—names	Workingmen, <i>see</i> Labor.
of countries and places.	Wyoming, manufactures..... 347
Trade-marks, decisions..... 352	Yards and Docks Bureau..... 355
<i>see also</i> Official Gazette.	Yarn, woolen, Germany..... 360
Tramways, <i>see</i> Electric railroads.	Yearbook, 1899..... 342
Transportation, hearings on..... 366	York region, Alaska, tin in..... 349
of cattle..... 343	Yosemite National Park..... 347
Transportation rates, <i>see</i> Freight, rates.	Yuba River..... 351
Transports, army, coal on..... 365	Yukon region..... 360
	Zinc, production, 1899..... 349

