

# **Adaptive Tutoring for Self-Regulated Learning: A Tutorial on Tutoring Systems**

**by Robert A Sottolare and Anne M Sinatra**

**ARL-SR-0305**

**December 2014**

## **NOTICES**

### **Disclaimers**

The findings in this report are not to be construed as an official Department of the Army position unless so designated by other authorized documents.

Citation of manufacturer's or trade names does not constitute an official endorsement or approval of the use thereof.

Destroy this report when it is no longer needed. Do not return it to the originator.

# **Army Research Laboratory**

Aberdeen Proving Ground, MD 21005-5425

---

**ARL-SR-0305****December 2014**

---

## **Adaptive Tutoring for Self-Regulated Learning: A Tutorial on Tutoring Systems**

**Robert A Sottilare and Anne M Sinatra**  
**Human Research and Engineering Directorate, ARL**

REPORT DOCUMENTATION PAGE				Form Approved OMB No. 0704-0188	
Public reporting burden for this collection of information is estimated to average 1 hour per response, including the time for reviewing instructions, searching existing data sources, gathering and maintaining the data needed, and completing and reviewing the collection information. Send comments regarding this burden estimate or any other aspect of this collection of information, including suggestions for reducing the burden, to Department of Defense, Washington Headquarters Services, Directorate for Information Operations and Reports (0704-0188), 1215 Jefferson Davis Highway, Suite 1204, Arlington, VA 22202-4302. Respondents should be aware that notwithstanding any other provision of law, no person shall be subject to any penalty for failing to comply with a collection of information if it does not display a currently valid OMB control number. <b>PLEASE DO NOT RETURN YOUR FORM TO THE ABOVE ADDRESS.</b>					
1. REPORT DATE (DD-MM-YYYY) December 2014		2. REPORT TYPE Final		3. DATES COVERED (From - To) January 2014–August 2014	
4. TITLE AND SUBTITLE Adaptive Tutoring for Self-Regulated Learning: A Tutorial on Tutoring Systems				5a. CONTRACT NUMBER	
				5b. GRANT NUMBER	
				5c. PROGRAM ELEMENT NUMBER	
6. AUTHOR(S) Robert A Sottolare and Anne M Sinatra				5d. PROJECT NUMBER	
				5e. TASK NUMBER	
				5f. WORK UNIT NUMBER	
7. PERFORMING ORGANIZATION NAME(S) AND ADDRESS(ES) US Army Research Laboratory ATTN: RDRL-HRT-T Aberdeen Proving Ground, MD 21005-5425				8. PERFORMING ORGANIZATION REPORT NUMBER ARL-SR-0305	
9. SPONSORING/MONITORING AGENCY NAME(S) AND ADDRESS(ES)				10. SPONSOR/MONITOR'S ACRONYM(S)	
				11. SPONSOR/MONITOR'S REPORT NUMBER(S)	
12. DISTRIBUTION/AVAILABILITY STATEMENT Approved for public release; distribution is unlimited.					
13. SUPPLEMENTARY NOTES					
14. ABSTRACT The tutorial described in this report was conducted at the Human-Computer Interaction International Augmented Cognition Conference in Creta Maris, Crete, Greece, in June 2014. The purpose of this tutorial was 3-fold: 1) familiarize participants with the fundamental principles of adaptive Intelligent Tutoring System (ITS) design; 2) illustrate how ITS design influences/enables self-regulated learning; and 3) discuss the need for standards for authoring of ITS, modeling of learners and experts, automated instructional strategies, and methods of analysis for ITS technologies.					
15. SUBJECT TERMS adaptive tutoring, intelligent tutoring systems, self-regulated learning, authoring adaptive systems, adaptive instruction, educational technology					
16. SECURITY CLASSIFICATION OF:			17. LIMITATION OF ABSTRACT  UU	18. NUMBER OF PAGES  80	19a. NAME OF RESPONSIBLE PERSON Robert A Sottolare
a. REPORT Unclassified	b. ABSTRACT Unclassified	c. THIS PAGE Unclassified			19b. TELEPHONE NUMBER (Include area code) 407-208-3007

---

## Contents

---

<b>1. Tutorial Objectives</b>	<b>1</b>
<b>2. Fundamentals of Tutoring</b>	<b>1</b>
<b>3. Generalized Intelligent Framework for Tutoring</b>	<b>6</b>
<b>4. Learner Modeling</b>	<b>26</b>
<b>5. Instructional Management</b>	<b>42</b>
<b>6. Domain Modeling</b>	<b>48</b>
<b>7. Authoring</b>	<b>50</b>
<b>8. Analysis of Effect</b>	<b>63</b>
<b>Bibliography</b>	<b>67</b>
<b>Distribution List</b>	<b>72</b>

INTENTIONALLY LEFT BLANK.

---

## 1. Tutorial Objectives

---

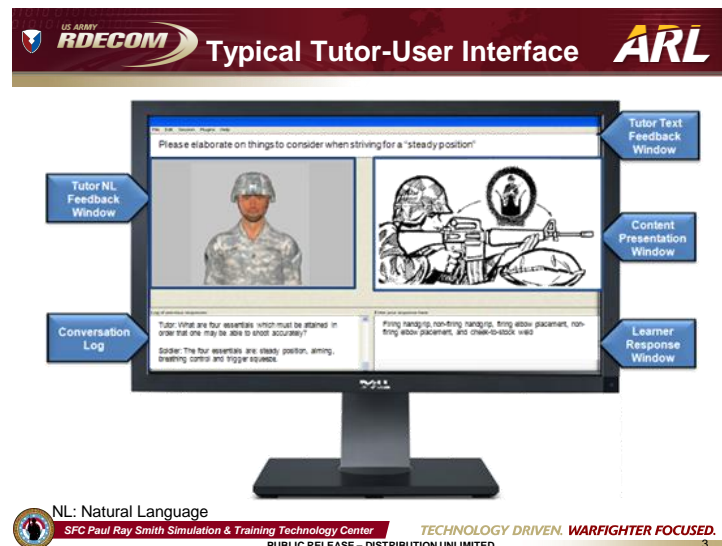
The purpose of this tutorial is 3-fold:

- Familiarize participants with the fundamental principles of adaptive Intelligent Tutoring System (ITS) design.
  - Illustrate how ITS design influences/enables self-regulated learning (SRL).
  - Discuss the need for standards for authoring of ITS, modeling of learners and experts, automated instructional strategies, and methods of analysis for ITS technologies.
- 

## 2. Fundamentals of Tutoring

---

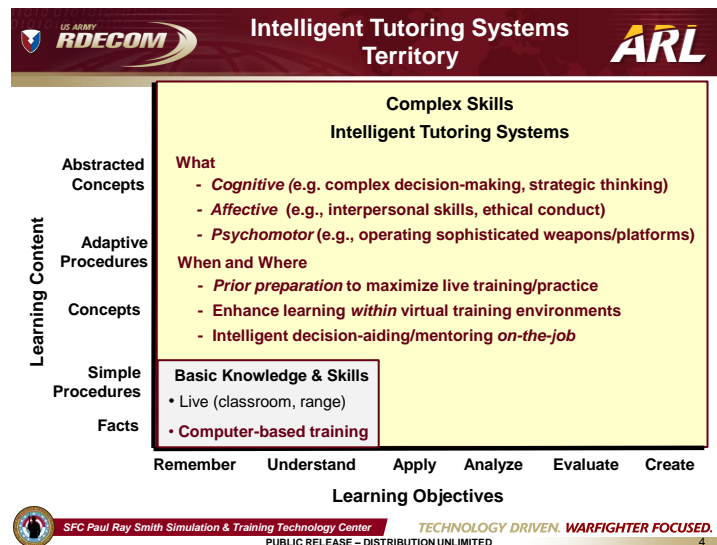
This section reviews the fundamentals of ITSs. Slide 3 illustrates a typical tutor-user interface used by the ITS to deliver content and feedback to the learner, and receive learner input. This interface may include a tutor natural language feedback window, which is used by the ITS to provide verbal feedback or direction through a virtual human. It usually provides a text feedback window, a content presentation window, and a learner response window where the learner provides text input in response to ITS directions, questions, or feedback. A running log of the conversation or chat window may also be part of the tutor-user interface.



Slide 4 illustrates the “sweet spot” for ITSs, the area where they may be most useful. This is within tutoring for complex skills versus simpler tasks. To support SRL, tutors adapt their delivery and the challenge level of scenarios to match those of the learner. If there is no adaptive change to match the learner’s needs, then this is simple computer-based training where the training is the same for everyone and not adaptive tutoring.

What is SRL? SRL is learning (acquisition of knowledge or skills) that is guided by metacognition (thinking about one’s thinking), strategic action (planning, monitoring, and evaluating personal progress against a standard), and motivation to learn. It takes great awareness and discipline to guide your own learning. Expert human tutors are much more effective and efficient at guiding learning. Just as expert human tutors guide learners, adaptive ITSs may also augment SRL by shaping instructional content and scaffolding support to meet the learner’s needs. The computer-based ITSs must be situationally aware of the learner’s state and the instructional context to be effective guides and support efficient instruction.

As noted in Slide 4, complex skills may include cognitive tasks where challenging decision-making and strategic thinking are exercised or affective tasks where interpersonal skills and ethical conduct are tested or psychomotor skills where coordination and timing are critical to physical tasks (e.g., land navigation) or operating sophisticated systems. ITSs may be used to prepare for live training, enhance learning in conjunction with virtual training environments, or act as job or decision aids during actual operations.



The primary reasons that tutors are limited in their use in education and training (see Slide 5) are 1) they have insufficient ability to adapt to learner needs and 2) they are expensive to author. It takes approximately 200 h of interdisciplinary team labor to make 1 h of coursework for tutoring. More adaptive equals more expensive.



**Expensive to author** and are **insufficiently adaptive\*** to support highly effective and tailored training experiences across a broad spectrum of military tasks.

- Adaptiveness drives the need for additional authoring... **more authoring, more development time, more cost**
- Adaptiveness is largely based on knowledge of learner performance... **other attributes influence learning (e.g., individual differences)**
- ITSs have been primarily applied in limited, well-defined domains... **with limited application to military tasks**



\*adaptive systems customize themselves automatically in response to users or changes in the environment.



SFC Paul Ray Smith Simulation & Training Technology Center

TECHNOLOGY DRIVEN. WARFIGHTER FOCUSED.

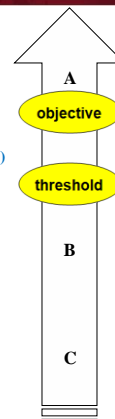
PUBLIC RELEASE - DISTRIBUTION UNLIMITED

5

Significant evidence exists that computer-based intelligent tutoring systems are just as effective as human tutors under certain conditions and generally within more well-defined domains (e.g., mathematics, physics) where there is generally one correct answer to a problem. The goal is for ITSs to be as effective as expert human tutors under all conditions and domains. The effect sizes shown in Slide 6 are baselined against traditional classroom training. The ultimate goal for ITSs is to impact learning with effect sizes equivalent to raising average (“C”) students to experts (“A” students) through tailored instruction and reinforcement of deep learning principles. In other words, the goal is to be as effective as or more effective than expert human tutors.

**Tutoring Methods and Effect Sizes...**

2.00	Skilled human tutors (Bloom, 1984) ( ↑ score from 50th to 98th)
1.05	Other tutoring systems ( ↑ median score from 50th to 85th)
	PACT Geometry Tutor (Anderson, Corbett, Koedinger & Pelletier, 1995)
	Atlas-Andes (VanLehn, et al., 2005; Rose, et al, 2001)
	Diagnoser - physics (Hunt & Minstrell, 1994)
	Sherlock (Lesgold, et al., 1988)
0.80	AutoTutor (20 experiments) (Graesser, et al, 2001-present )
0.79	Skilled human tutors (VanLehn, 2011) ( ↑ median score from 50 <sup>th</sup> percentile to 79 <sup>th</sup> )
0.42	Unskilled human tutors (Cohen, Kulik, & Kulik, 1982) ( ↑ median score from 50 <sup>th</sup> percentile to 66 <sup>th</sup> percentile)
0.00	Baseline - traditional classroom training



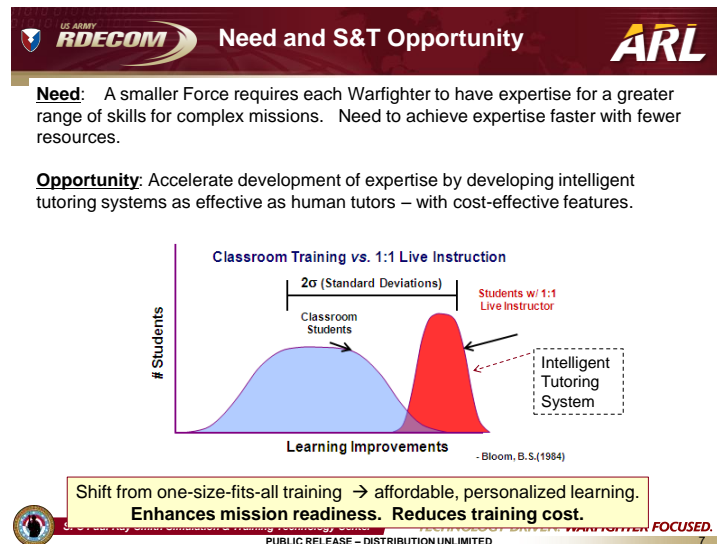
SFC Paul Ray Smith Simulation & Training Technology Center

TECHNOLOGY DRIVEN. WARFIGHTER FOCUSED.

PUBLIC RELEASE - DISTRIBUTION UNLIMITED

6

Many organizations are feeling the crunch to achieve more with less. While training and education remain important to maintaining organizational competency, it may not be practical or feasible to achieve and maintain competency in a traditional classroom. One-to-one training (Bloom 1984) has been shown (Slide 7) to be more effective than classroom training, but it is not practical to have one-to-one tutoring for every person in a large organization.



So, if we wanted an ideal tutoring system that could adapt to our needs, what would it look like? Slide 8 shows a set of salient characteristics for a platinum-level tutor as described by Sottolare and Gilbert (2011).

**US ARMY RDECOM** **Salient Characteristics of an Ideal Tutoring System** **ARL**

- **self-regulated** – support learning of individuals and teams (Army requirement)
- **adaptive** – use AI to tailor instruction to the learning needs of individuals and teams of Soldiers
- **effective & credible** – as good or better than an expert human tutor
- **relevant** – support military training in both ill-defined and well-defined environments
- **accurate & valid** – use optimal instructional methods based on empirical results
- **usable** – tailored to different users (trainees, trainers, developers, designers...)
- **accessible** – service-oriented, available anywhere 24/7/365
- **affordable** – easy to author, promotes standards and reuse
- **persistent** – models the learning needs of Soldiers across their careers

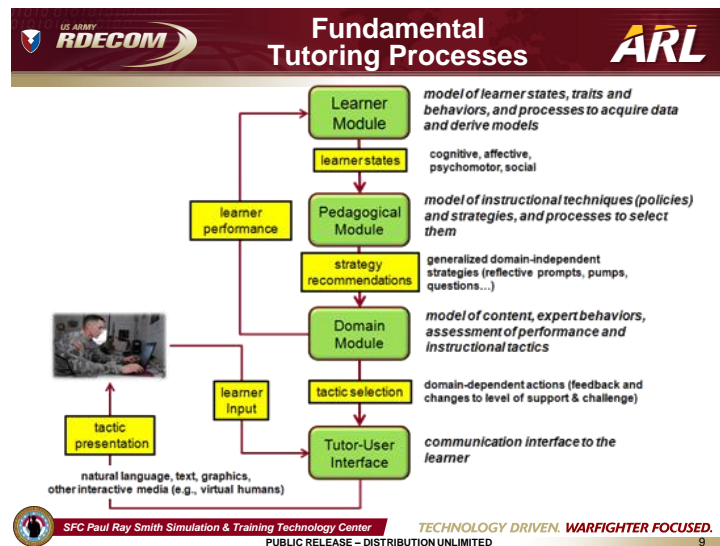
Bronze Tutor Silver Tutor Gold Tutor Platinum Tutor

Sottolare, R. and Gilbert, S. (2011). Considerations for tutoring, cognitive modeling, authoring and interaction design in serious games. Authoring Simulation and Game-based Intelligent Tutoring workshop at the Artificial Intelligence in Education Conference (AIED) 2011, Auckland, New Zealand, June 2011.

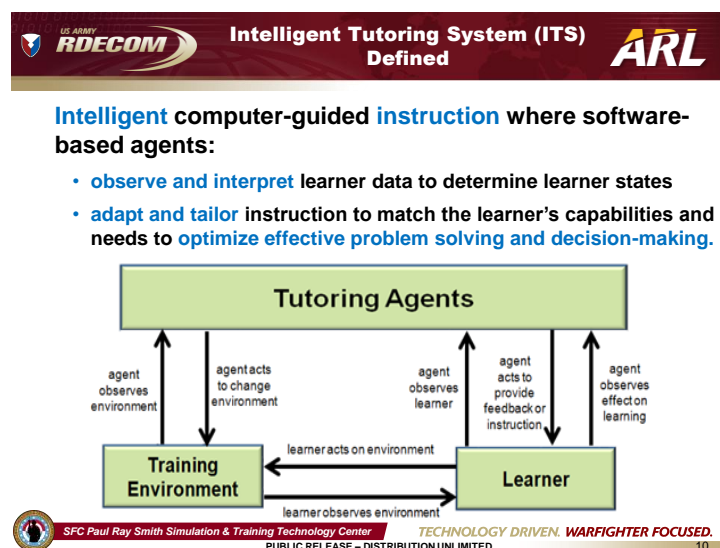
**SFC Paul Ray Smith Simulation & Training Technology Center** **TECHNOLOGY DRIVEN. WARFIGHTER FOCUSED.**

PUBLIC RELEASE – DISTRIBUTION UNLIMITED

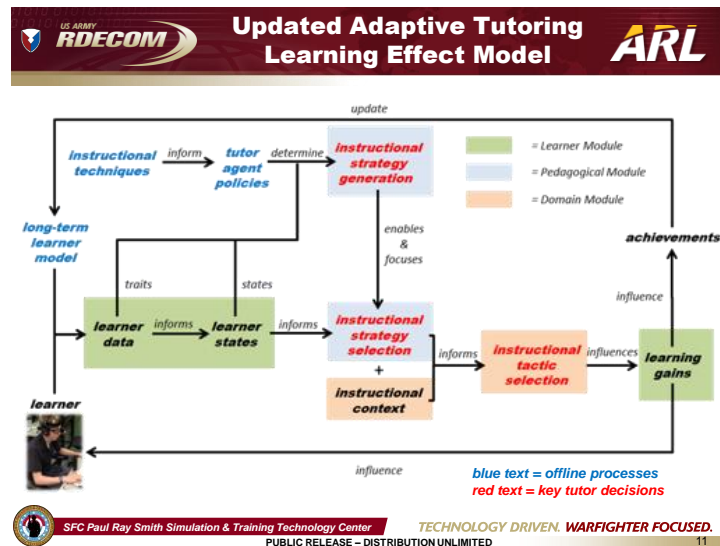
Before we continue in our discussion of tutoring systems, we should examine their fundamental elements and processes (Slide 9). Nearly every tutoring system has 4 fundamental elements: a learner model, a pedagogical (instructional) model, a domain model, and a communication model. The green boxes in the slide below show these fundamental elements as *modules* versus models because they manage processes in addition to modeling the learner, the instruction, the domain, and the communication.



ITSs use the processes in Slide 9 to assess the learner and manage instruction. ITSs are defined as intelligent software-based agents that guide instruction by observing and interpreting learner data (behaviors, physiology, demographics) to classify learner states (e.g., engagement, competency, emotions). The ITS uses these states to adapt/tailor instructions to match the learner's capabilities and needs to optimize learning. Slide 10 shows the interaction between tutoring agents, the learner, and the training environment (e.g., simulation, game, presentation).



Finally, the adaptive tutoring learning effect model shown in Slide 11 illustrates the interactive loops of the tutoring process. Learner module data/processes are shown in green boxes. Pedagogical module data/process are shown in light blue boxes and domain module processes in light orange.

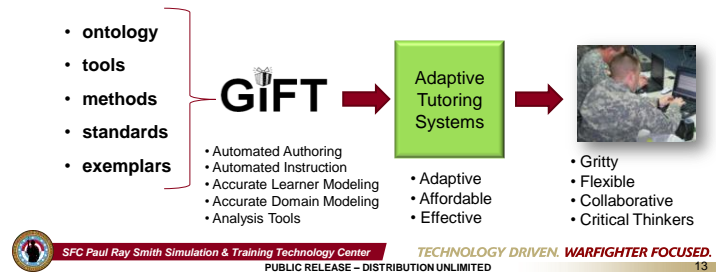


### 3. Generalized Intelligent Framework for Tutoring

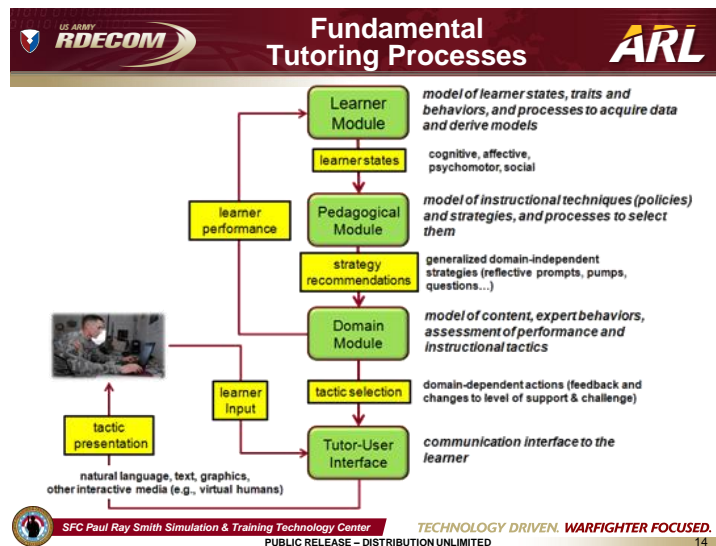
Traditionally, ITSs are expensive and time consuming to develop. Additionally, they tend to be linked to specific content and are not easily changed. Reuse in tutoring systems is virtually nonexistent. The Generalized Intelligent Framework for Tutoring (GIFT) is an open-source, domain-independent intelligent tutoring framework (Slide 13). It is intended to provide flexibility and the ability to create full tutors with content of the author's choice. By being domain-independent, it allows for the reuse of materials and a reduction in both the time and monetary costs of developing tutoring systems.

An S&T effort to develop an open-source tutoring architecture to:

- capture **best tutoring practices** and support **rapid authoring, reuse and interoperability** of ITSs
- **lower costs and entry skills** needed to author ITSs
- **enhance the adaptiveness** of ITSs to support self-regulated learning (SRL) per the Army Learning Model

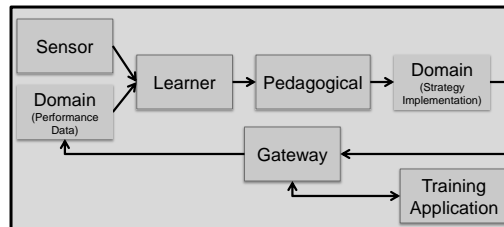


The fundamental tutoring processes within GIFT are consistent with the previously described components of the tutoring process, which are reviewed in Slide 14.



As with most ITSs, GIFT has 4 primary modular components: Domain Module, Learner Module, Pedagogical Module, and Gateway Module. Additionally, this diagram represents the process that occurs with user input to GIFT when the user is interacting with a training application. Additional information about these modules and their processes is provided further along in the “GIFT Tutors GIFT” portion of this tutorial. In addition to the 4 primary modules, GIFT also provides a sensor module that is used to capture behavioral and physiological data about the learner which can then be used to interpret/classify that data into learner states for use by the learner module and the pedagogical module as described in the “Adaptive Tutoring Learning Effect Chain”. The interaction of the modules is illustrated in Slide 15.

## GIFT



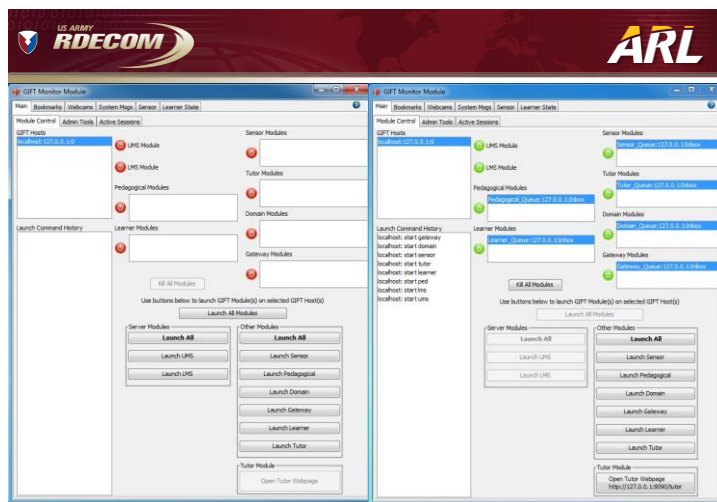
SFC Paul Ray Smith Simulation & Training Technology Center

TECHNOLOGY DRIVEN. WARFIGHTER FOCUSED.

PUBLIC RELEASE - DISTRIBUTION UNLIMITED

15

The modules in GIFT can be launched manually through the Module Monitor shown in Slide 16. The image on the left is the Module Monitor before the modules have been launched. The image on the right is the Module Monitor after the modules have been successfully launched. In GIFT 3.0 and above, it is also possible to launch the modules in one step, which includes the launching of the tutor web page.



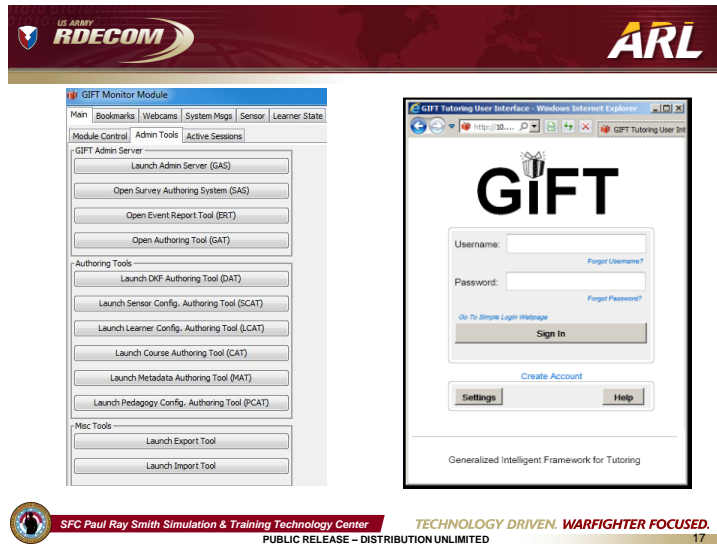
SFC Paul Ray Smith Simulation & Training Technology Center

TECHNOLOGY DRIVEN. WARFIGHTER FOCUSED.

PUBLIC RELEASE - DISTRIBUTION UNLIMITED

16

Slide 17 provides a visual of the Admin Tools in the Module Monitor (left) and the GIFT login screen on the tutor web page (right). There is also a simple login page that can be used for experiments and does not require a password.

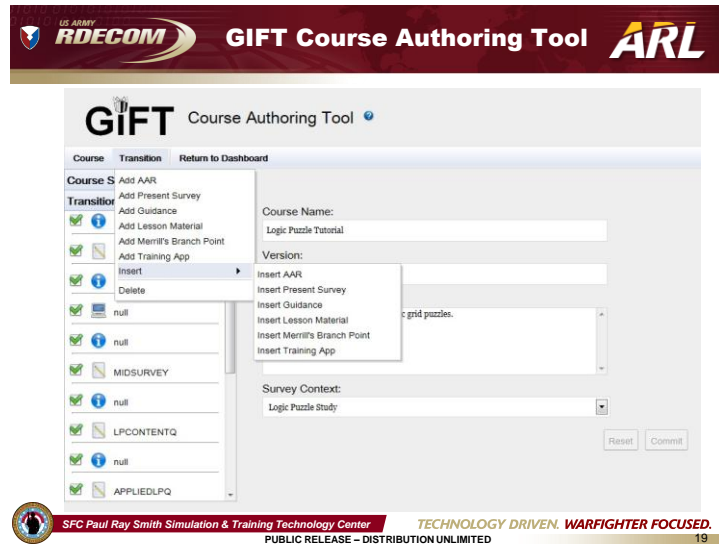


Within the Admin Tools Tab is a series of authoring tools. The GAT (GIFT Authoring Tool) is a new element of GIFT 2014-1-X, as is shown in Slide 18. It provides a user-friendly way for authors to create their courses in GIFT. The course selection dashboard is pictured in the current slide. Each line represents a current course within GIFT, and the green checkmark indicates that it is complete and validated. Courses can be opened by highlighting the name and then clicking “Edit”.

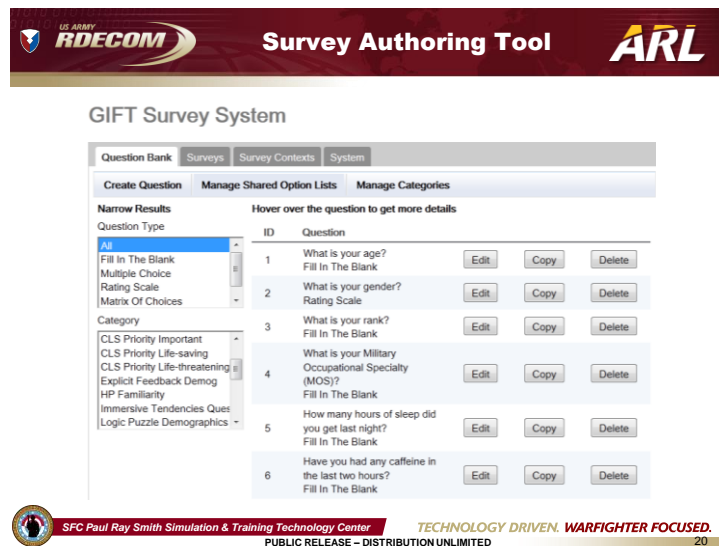


The functionality of the new GAT is demonstrated in Slide 19. The transitions and elements of the course are presented on the left side of the screen. Once one of transitions is selected, the associated fields to enter content into are displayed on the right side of the screen. Additional transitions can be added using the menu on the top left of the page.



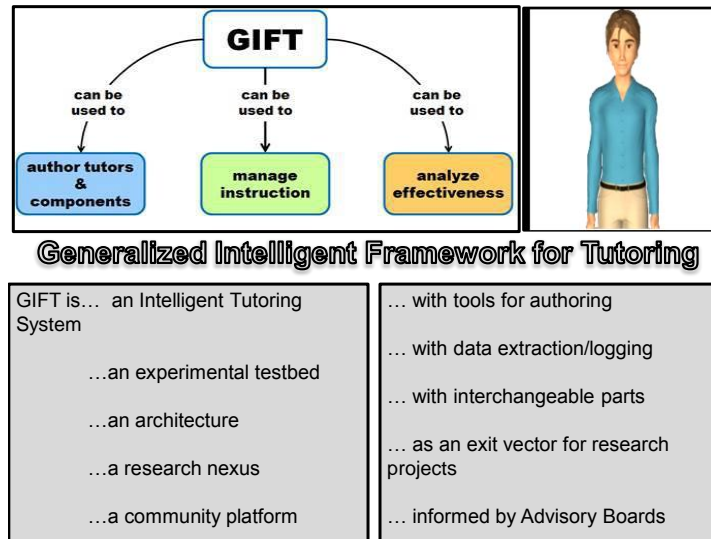


Surveys are authored in GIFT through the Survey Authoring System. It provides the ability to create questions and surveys. Additionally, it can be programmed such that the surveys are automatically graded.



The next set of slides (pp. 11–15) provides an animated sequence that explains GIFT in simple terms. GIFT has 3 distinct functions. First, it is an authoring capability to develop new ITS components and whole tutoring systems. Second, it's an instructional manager that integrates selected tutoring principles and strategies for use in ITSs. Third, it's an experimental test bed to analyze the effectiveness and impact of computer-based tutoring systems components, tools, and methods. GIFT is intended to be a community platform for you to contribute to and to help you with your research and development.

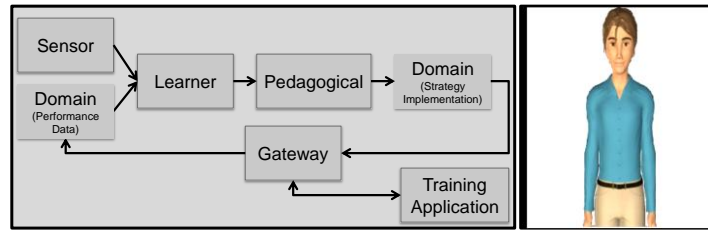




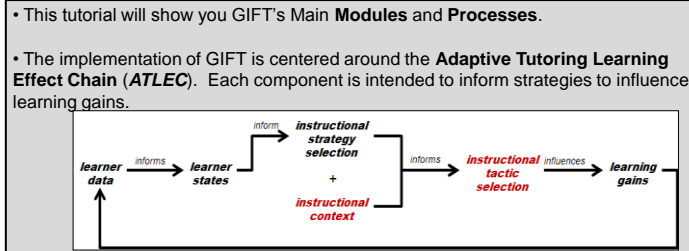
GIFT is based on a learner-centric approach and is therefore designed to be consistent with the Adaptive Tutoring Learning Effect Chain. In this chain, the learner data informs learner states, which then informs instructional strategy. Selection of the appropriate strategy at the correct time is expected to lead to learning gains.

Each of these processes is captured in individual modules of GIFT. For this tutorial, we will go through the functions, inputs, and outputs of each GIFT module. Let's talk about the first one, the Domain Module. Although the Domain Module is one module in reality, it is divided into 2 modules for you to better understand each of its 2 functions: performance assessment and strategy implementation.

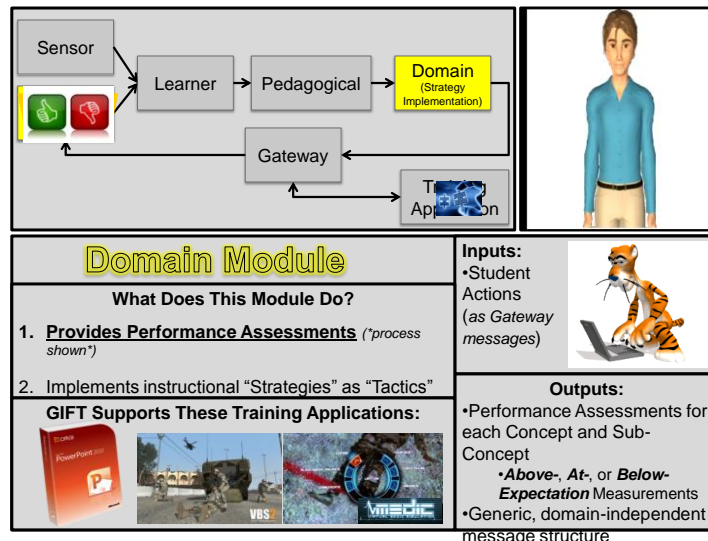
The learning effect chain starts by monitoring learner performance and sensor data. Learner performance is assessed from data captured in a training application, which is fed into GIFT's Domain Module via the Gateway Module. GIFT processes learner interaction data by comparing the Domain Module inputs against designated models of expert performance. In order to keep GIFT generic to all training applications, domains are represented as a hierarchical structure of "Concepts".



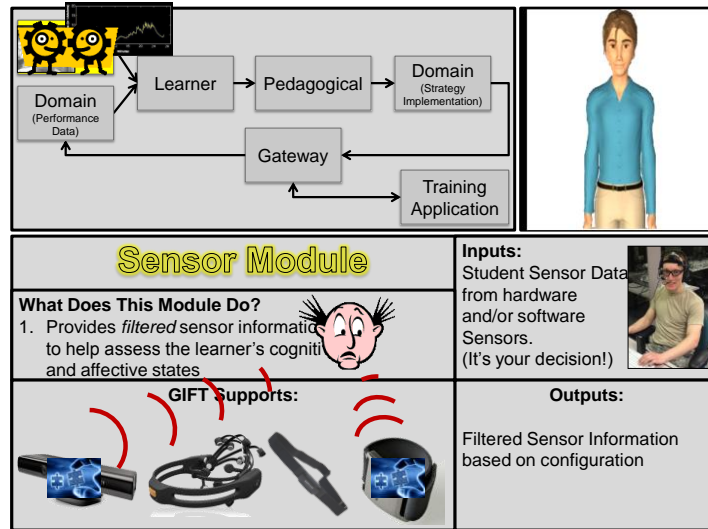
## Generalized Intelligent Framework for Tutoring



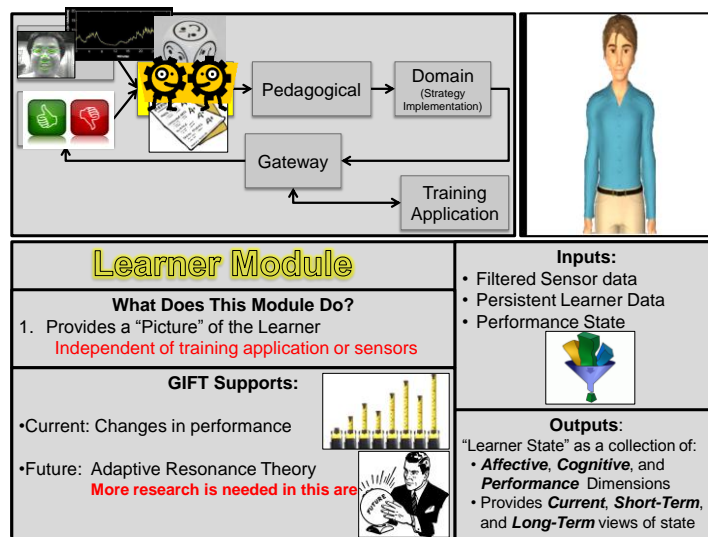
For all identified Concepts and Subconcepts, a learner can perform “at standard”, “above standard”, or “below standard”, as determined by comparison of performance to the expert model. Outputs from the Domain Module are fed into the Learner Module and contain performance states associated with specific concepts represented in the domain representation.



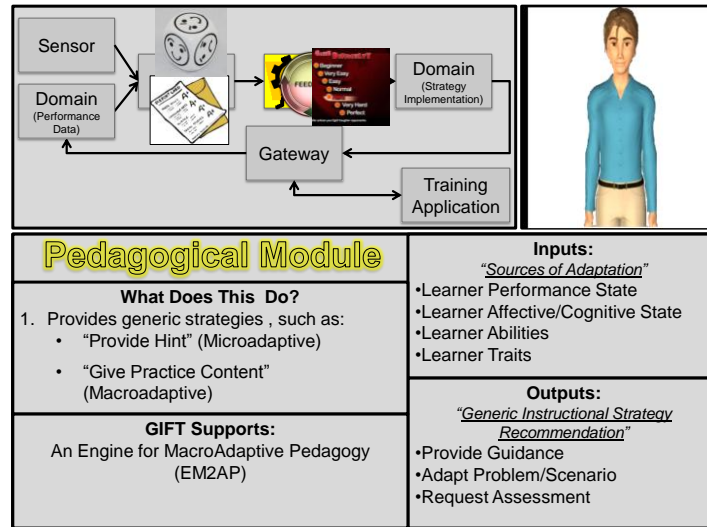
GIFT also uses information collected from sensors to monitor a learner’s reactive states while interacting with a system. The Sensor Module takes in raw sensor data streams as inputs and applies filters to convert the data into metrics correlated with cognitive and affective states. This filtered data is passed to the Learner Module for inferring affective and cognitive state determinations. You wouldn’t use the same instruction for a bored student as an energetic one, would you? Sensors may be used to collect data about the learner and determine the learner’s states. Data from the learner may be filtered or unfiltered.



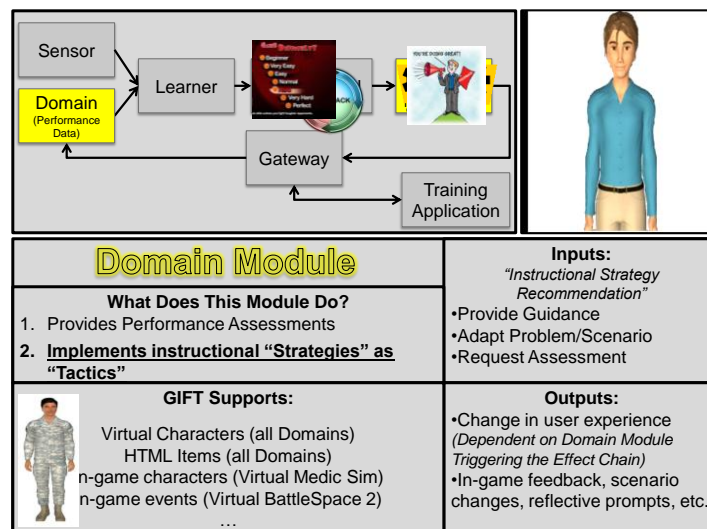
So far we've learned that performance information from the Domain Module and sensor information from the Sensor Module serve as inputs to the next function of the learning effect chain, the Learner Module. The Learner Module consumes this information and performs processes to designate a "Learner State", which may be cognitive (e.g., engagement), affective (e.g., emotions), or physical (e.g., fatigue or arousal). Once a state is classified, the results are then fed to the Pedagogical Module. In addition, the Learner Module maintains information about the learner's stable traits, experiences, and competencies, which are also used to customize strategy selections for the individual learner.



The Pedagogical Module uses the "Picture of the Learner" state information and learner trait data, and then recommends generic strategies to accommodate individual learners. If the student is bored and passing your course, then you probably want to adjust the course. For instance, the Pedagogical Module may provide guidance and feedback to aid in performance, adjust course difficulty, present more interactive material, or request an assessment of the learner's ability.

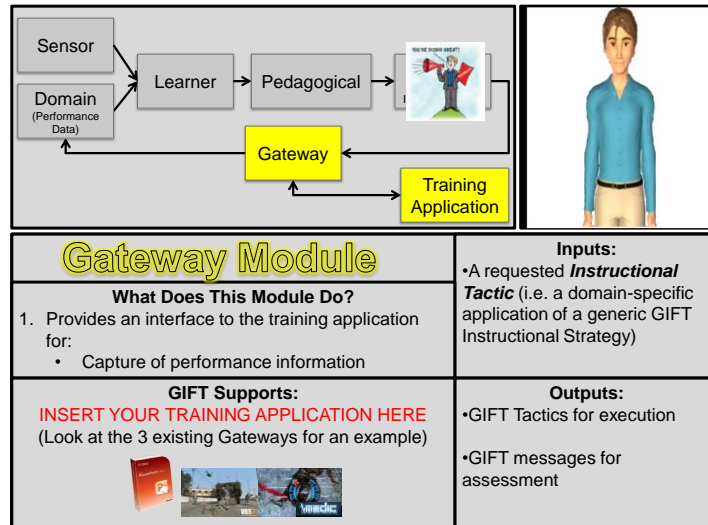


Once the Pedagogical Module uses learner state information to select a strategy, the strategy selected is then sent to the Domain Module. The Domain Module then chooses an appropriate method to implement the request as a defined tactic or action. The selection of the tactic is based on the learner's ability levels. For example, it may be more appropriate for one learner to receive a hint while a metacognitive prompt may be more suitable for another.



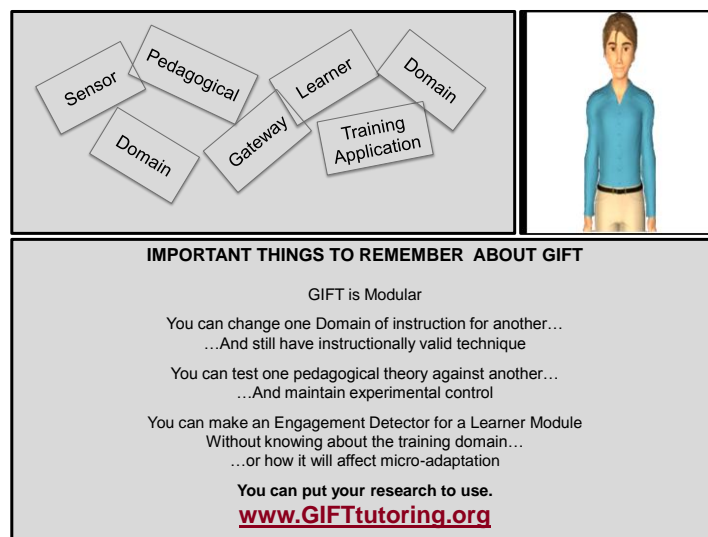
The Gateway Module receives the tactic that was output by the Domain Module and presents it to the learner. Depending on the type of request, this can involve actions to execute tactics within the training application environment (e.g., serious game) or by the Tutor User Interface, a window to present information to and receive information from the learner.

The Gateway Module translates this interface into GIFT-assessable messages, allowing for the whole learning effect to operate. If you already have a training application, the Gateway Module is where you can build an interface to it and add individualized and research-based instructional strategies.



All of the modules communicate to each other via defined protocols. This means that you can easily replace one version of a module with another, which assists in setting up experiments and training with a variety of applications. You can make one module and know with confidence that the rest of the modules will do their duty. Research done for GIFT can make its way back to the community.

You can download GIFT for free (for life) and get support for your development at [www.gifttutoring.org](http://www.gifttutoring.org).



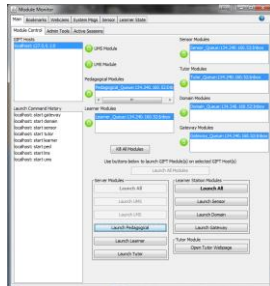
Slides 30–48 discuss the various releases of GIFT and their affiliated capabilities.



GIFT has been continuously developing and growing since its initial release in May 2012. The initial release included the fundamental modules and elements that are still part of the current releases. An initial version of the Module Monitor is pictured in Slide 31.

GIFT 1.0  
(Baseline Release – May 2012)

- **Architecture, Tools & Methods**
  - Domain-Independent Processes
  - Service-Oriented Architecture
    - Apache Active MQ
  - Functional Modules
    - Pedagogical, Learner, Domain, Sensor, Module Monitor, Learning Management System (persistent Learner Model)
    - Tutor-User Interface (supports web-enabled content)
  - Pedagogy - Variable feedback based on performance

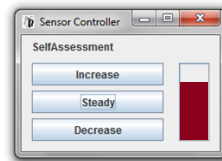


SFC Paul Ray Smith Simulation & Training Technology Center  
 PUBLIC RELEASE - DISTRIBUTION UNLIMITED

TECHNOLOGY DRIVEN. WARFIGHTER FOCUSED.  
 31

The initial release also included the ability to record information from sensors, such as EEG (electroencephalography), a temperature/humidity-sensitive mouse, and a self-assessment sensor.

- **Sensors**
  - **EEG – Emotiv Epoch**
  - **Temperature and humidity-sensitive mouse**
  - **Software-based surrogate sensor**
    - **sensitivity testing**



Research has been performed with the various releases of GIFT. An initial experiment was performed to assess low-cost sensors and their impact on learning cognition and affect. This work helped to inform the future direction of sensors within GIFT. Work is consistently being done with GIFT to improve and add to its capabilities.

The initial release included support for Virtual BattleSpace 2, a serious game, as an external training application.

- **Tutoring Domains**
  - **Virtual BattleSpace 2**
    - **Training Support Packages**
      - **IED Report**
      - **Surprise Attack**
      - **Room Clearing**
    - **Presence Patrol**





- **Related Experiments Using GIFT**
  - **Low Cost Sensors for Real-time Assessment of Learner Cognition and Affect**
    - **Leveraged VBS2 Training Environment**
    - **Emotion Induction Techniques (EITs)**
    - **Classifiers**

**Cognitive States that Impact Learning**

- Attention
- Distraction
- Drowsiness
- Engagement
- Flow
- Workload

**Affective States that Impact Learning**

- |                         |                      |
|-------------------------|----------------------|
| • Anger/<br>Frustration | • Joy<br>Motivation  |
| • Boredom               | • Sadness            |
| • Confidence            | • Shame              |
| • Confusion             | • Surprise           |
| • Fear/<br>Anxiety      | • Wonderment/<br>Awe |



SFC Paul Ray Smith Simulation & Training Technology Center

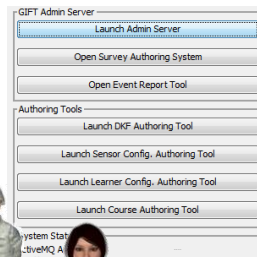
TECHNOLOGY DRIVEN. WARFIGHTER FOCUSED.

PUBLIC RELEASE – DISTRIBUTION UNLIMITED

34

Additional features are being consistently added to GIFT based on both research objectives and user input. GIFT 2.0 was upgraded by including a number of different tools that are of use to course designers and researchers.

- **Architecture, Tools & Methods Added**
  - **XML-based Authoring Tools to support**
    - **Surveys and Tests**
    - **Addition/Removal of Sensors**
    - **Changing Learner Models**
    - **Authoring of Content/Assessments**
    - **Creation of Courses and Experiments**
    - **Analysis of Experimental Data**
  - **Virtual Human Plug-In**
    - **Media Semantics Characters**



SFC Paul Ray Smith Simulation & Training Technology Center

TECHNOLOGY DRIVEN. WARFIGHTER FOCUSED.

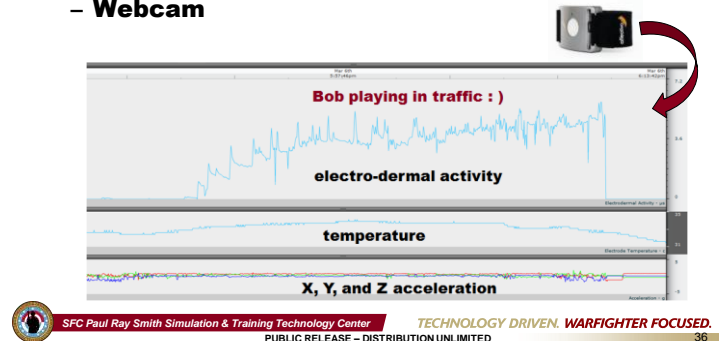
PUBLIC RELEASE – DISTRIBUTION UNLIMITED

35

Additional sensors were added to GIFT 2.0. Once an interface for a commercial sensor is added to GIFT, the GIFT community benefits by never having to integrate that sensor again.

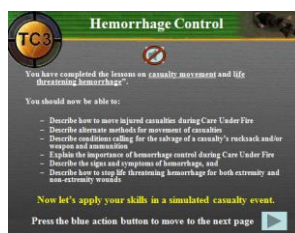


- **Sensors Added**
  - **Q-Sensor (electro-dermal activity, temperature, acceleration)**
  - **Webcam**



GIFT 2.0 also included the addition of Microsoft PowerPoint as a training application. This addition is extremely useful, as it makes it easier to harness reusable content in the form of PowerPoint presentations. Additionally, PowerPoint is a program that individuals of many skill levels are familiar with, and it increases the flexibility that GIFT course designers have with their included material.

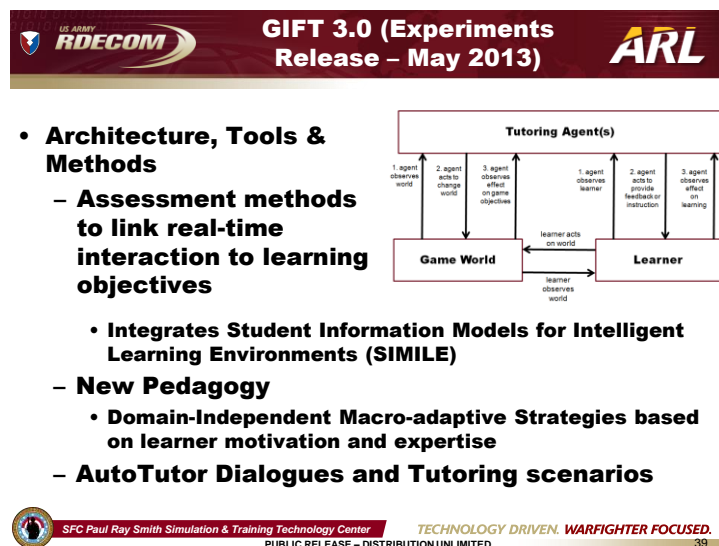
- **Tutoring Domains Added**
  - **PowerPoint**
    - **Tactical Combat Casualty Care**
      - **Care under fire principles**
      - **Hemorrhage control**



The photo in Slide 38 demonstrates an experiment in action. GIFT is visible on the left side of the screen, with the training application on the right. Additionally, the participant is wearing the Q-sensor, which measures electrodermal activity.



GIFT 3.0 included tools such as SIMILE, which made the ability to link real-time interactions to learning objectives more straightforward for GIFT course authors. In its present form, SIMILE works for TC3Sim/Vmedic; however, future work is being done that will allow it to work with additional training applications. Further, the 3.0 release included the engine for Macro and Micro Adaptive Pedagogy (eM2AP) for managing instruction and elements of AutoTutor through dialogues and tutoring scenarios.



GIFT 3.0 included a very useful feature: the ability to export a created tutor. This allows more flexibility in the way that an individual student will interact with GIFT. Additionally, a full installation of GIFT no longer needs to be completed on each computer that will be running the developed tutor.

The Human Affect Recording Tool (HART) was included with the release and can be used by researchers. HART is an app for the Android platform that implements the Baker-Rodrigo Observation Method Protocol (BROMP) 1.0, a method for assessing human affect and engagement in field settings, allowing for synchronization between field observations and log files of student-software interaction.

**GIFT 3.0 (Experiments  
Release – May 2013)**

- **Architecture, Tools & Methods (continued)**
  - **Export Tutor Function**
  - **Human Affect Recording Tool (HART)**
    - Android app for assessing human affect and engagement in field settings per Baker-Rodrigo Observation Method Protocol (BROMP)

**SFC Paul Ray Smith Simulation & Training Technology Center**  
PUBLIC RELEASE – DISTRIBUTION UNLIMITED

TECHNOLOGY DRIVEN. WARFIGHTER FOCUSED.  
40

HART is described in Baker et al. (2012) and implements the protocol described in Ocumpaugh et al. (2012).

Additionally, the ability to track facial expressions, posture, and head pose was added with the integration of the Microsoft Kinect as a sensor.

**GIFT 3.0 (Experiments  
Release – May 2013)**


- **Sensors Added**
  - **Kinect**
  - **Filters**
    - **Kinect**
    - **MultiSense – Perception Markup Language**
      - » real-time facial expressions, body posture
      - » Schrer, etal (2012)
    - **Generalized Adaptive View-based Appearance Model (GAVAM)**
      - » head pose estimation
      - » Morency, Whitehill & Movellan (2008)

**SFC Paul Ray Smith Simulation & Training Technology Center**  
PUBLIC RELEASE – DISTRIBUTION UNLIMITED

TECHNOLOGY DRIVEN. WARFIGHTER FOCUSED.  
41


GIFT 3.0 also included additional example courses that used TC3Sim/Vmedic. Additional research was conducted using GIFT as a test bed to examine the self-reference effect in context

of cognitive tasks in a computerized learning environment. The materials that were used in this study were released as an additional course titled “Logic Puzzle Tutorial” in GIFT 4.0.

 **GIFT 3.0 (Experiments Release – May 2013)**


- **Related Experiments Using GIFT**
  - **Explicit Feedback with Game-base Training**
    - **Training to Solve Logic Puzzles (cognitive tasks)**
    - **Automated Detection of Engagement and Affect Leveraging Interaction Patterns and Sensors**





SFC Paul Ray Smith Simulation & Training Technology Center

TECHNOLOGY DRIVEN. WARFIGHTER FOCUSED.  
 PUBLIC RELEASE – DISTRIBUTION UNLIMITED

42

GIFT 4.0 also included an enhanced version of eM2AP, additional sensor filters, and integration with new training domains (Marksmanship and Logic Grid Puzzles) based on experimentation with GIFT 3.0.

 **GIFT 4.0 (November 2013)**


- **Architecture, Tools & Methods**
  - **Enhanced Learner Affect Models (interaction/sensor)**
  - **Enhanced Performance Assessment Engine**
    - **Pedagogical Authoring functionality added**
  - **New Sensor Filters**
    - **Galvanic Skin Response (GSR) data**
    - **Heart Rate data**
  - **New Training Domains**
    - **Marksmanship**
    - **Logic Grid Puzzles**

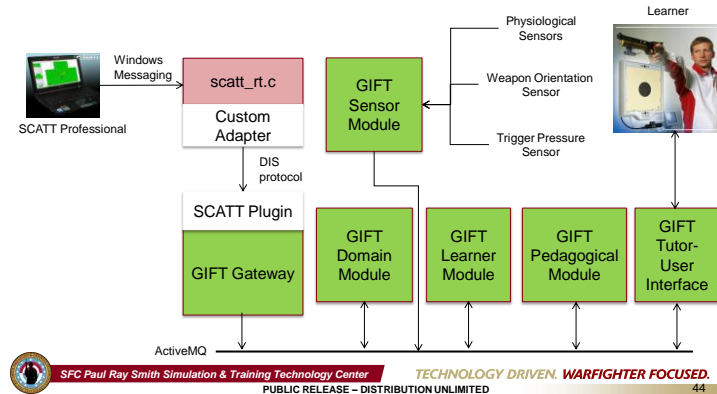

SFC Paul Ray Smith Simulation & Training Technology Center

TECHNOLOGY DRIVEN. WARFIGHTER FOCUSED.  
 PUBLIC RELEASE – DISTRIBUTION UNLIMITED

43

As mentioned previously, a psychomotor training domain, Marksmanship, was facilitated through capabilities in GIFT 4.0. This allows for the development of expert marksmanship models. Slide 44 displays the interaction between the different GIFT modules and the marksman (learner).

- **Related Experiments Using GIFT**
  - **Adaptive Marksmanship (psychomotor tasks)**

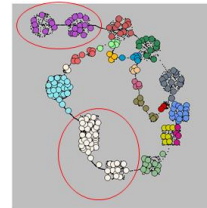


Further, GIFT 4.0. is being used to assess future capabilities. As it continues to develop, GIFT will be adapted to support use by multiple learners in a server-based environment. Further, GIFT is being integrated into a mobile learning environment (The US Army Research Laboratory's [ARL's] Soldier Centered Army Learning Environment [SCALE]) as a learning engine.

- **Related Experiments using GIFT (continued)**
  - **Scalability & Performance Testing**
    - **discrete event modeling of network performance**
    - **analysis of alternatives**
      - **e.g., nested ActiveMQs**
  - **GIFT as learning engine for SCALE**
    - **Soldier-Centered Army Learning Environment**
    - **Validation Experiments**

Research efforts are ongoing to mature architecture, authoring tools, and modeling of the learner. As they mature, these capabilities are integrated within GIFT.

- **Architecture, Tools & Methods**
  - **Generalized Micro-adaptation Strategies**
  - **Automatically Generation of Expert Models**
  - **Tutor-Game Integration tools**
  - **Real-time trainee modeling**
  - **Thin/Web Client functionality**



SFC Paul Ray Smith Simulation & Training Technology Center

TECHNOLOGY DRIVEN. WARFIGHTER FOCUSED.

PUBLIC RELEASE – DISTRIBUTION UNLIMITED

46

GIFT 2014-2 and future versions are moving toward separate interfaces and tools for different users (learners, power users, and domain experts). In addition, there will be different configurations for different situations/environments (e.g., classrooms, experiments, mobile learning).

- **Architecture, Tools & Methods (continued)**
  - **Develop/enhance user-dependent interfaces**
    - **Learners, Domain Experts, Trainers, Developers, Instructional Designers, Researchers**
  - **Configurable deployment (classroom, experimental station, etc.)**
  - **Virtual Human Toolkit**



SFC Paul Ray Smith Simulation & Training Technology Center

TECHNOLOGY DRIVEN. WARFIGHTER FOCUSED.

PUBLIC RELEASE – DISTRIBUTION UNLIMITED

47



ARL has the goal for GIFT to be a learning engine for several types of training environments. Targets of opportunity include the US Department of Energy's National Training & Education Resource, the US Advanced Distributed Learning Initiative's Personalized Assistant for Learning (PAL), and ARL's SCALE.

- **Continue to leverage AutoTutor and AutorTutor Lite functionality**
  - Speech Act Analysis, Complex Dialog Management, Artificial Intelligence Markup Language, Learner Characteristics Curves
- **Enhanced cognition and affect detectors**
- **Extend learning environments to military training domains (complex and ill-defined domains)**
- **GIFT as learning engine for PAL**

## **Demo of GIFT bootup**

## 4. Learner Modeling

There are 2 key steps in learner modeling: data acquisition and state classification. Learner data, as noted in the adaptive tutoring learning effect model, may be acquired in real-time from sensors or learner input (e.g., surveys, interaction with training environment) or in pretutoring from a long-term learner model (LTLM) sometimes called a persistent learner model. Slide 51 examines low-cost sensors for acquiring learner data.



### Learner Modeling Learner Data Acquisition

**WHAT IS IT?**




- Tools and methods to unobtrusively **acquire learner data** (behaviors and physiological measures) to support learner state classification in **real-time** using **low-cost (\$50-200) sensors**

**WHAT DOES IT OFFER?**

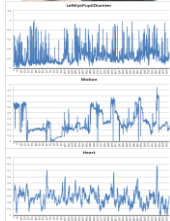


- The ability to **affordably model** learner cognitive, affective and psychomotor states in real-time as a basis for instructional decisions

**TECHNICAL APPROACH:**

- Identify a small set of low-cost sensors to acquire learner data to support accurate prediction of key learner states:
  - attention, engagement, cognitive load
  - confusion, boredom, frustration, anxiety, anger
  - motivation



EEG ~ \$200      Kinect ~ \$100      HD Webcam < \$50





SFC Paul Ray Smith Simulation & Training Technology Center  
PUBLIC RELEASE - DISTRIBUTION UNLIMITED

TECHNOLOGY DRIVEN. WARFIGHTER FOCUSED.

51

Slide 52 reviews approaches for using learner data to classify learner states (e.g., emotions, engagement, performance, competence). Of particular note are the preliminary findings on this slide.



### Learner Modeling State Classification Methods

**WHAT IS IT?**

- Tools and methods to unobtrusively **assess learner states** (e.g., engagement, performance, emotions) in real-time using machine learning techniques

**WHAT DOES IT OFFER?**

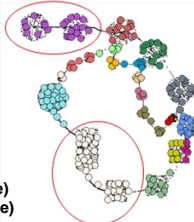
- The ability to **accurately model** learner cognition, affect and physical states in real-time as a basis for tailoring instruction

**TECHNICAL APPROACH:**

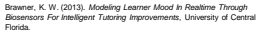

- Explore **new machine learning methods** and develop detectors (classifiers) to **accurately\* predict** key learner states
  - attention, engagement, cognitive load
  - confusion, boredom, frustration, anxiety, anger
  - motivation

**PRELIMINARY FINDINGS:**

- Generalized classifiers are proving to be impractical
- Offline individual classification models are not reusable
- Real-time classifiers of affect are of good quality (~80% accurate)
- Real-time classifiers of cognition are not as good (<60% accurate)



\*Accuracy = (True Positive + True Negative Predictions) / (Total Predictions)



SFC Paul Ray Smith Simulation & Training Technology Center  
PUBLIC RELEASE - DISTRIBUTION UNLIMITED

TECHNOLOGY DRIVEN. WARFIGHTER FOCUSED.

52



The learner states of interest during tutoring are primarily centered in 3 areas that moderate learning (acquisition of knowledge and skills): cognition, motivation, and affect (see Slide 53).

**Learner Modeling  
Approaches**

- **Approach: Investigate & model significant influencers of learning**
  - **Cognitive modeling**
    - *cognitive load, engagement (Lepper & Woolverton, 2002)*
    - *attention, distraction, drowsiness, engagement, flow, and workload (Carroll, et al, 2011; Kokini, et al, 2012)*
  - **Motivational modeling**
    - *personality, values, goals, interests (Lepper & Woolverton, 2002)*
  - **Affective modeling**
    - *confusion, boredom, frustration, engagement/flow, curiosity, anxiety, delight, and surprise (Graesser & D'Mello, 2012)*
    - *mood modeling - pleasure, arousal, and dominance (Mehrabian, 1996; Sottolare & Proctor, 2012; Brawner, 2013)*

SFC Paul Ray Smith Simulation & Training Technology Center  
 TECHNOLOGY DRIVEN. WARFIGHTER FOCUSED.  
 PUBLIC RELEASE - DISTRIBUTION UNLIMITED

53

The results of an experiment that sampled low-cost sensors and their ability to reliably detect learner states is shown in Slide 54.

**Learner Modeling  
Approaches (continued)**

- **Approach: Investigate low cost sensor technologies to inform classification of key influencers of learning**
  - **survey of behavioral & physiological sensors (Carroll, et al, 2011)**

States	Sensor	Cost
Anger: Frustration, Boredom	Motion Detector	~\$100
Anger: Frustration, Fear, Anxiety, Boredom	Heart Rate Monitor	~\$100
Anger: Frustration, Boredom	Chair Pressure Sensors	~\$200

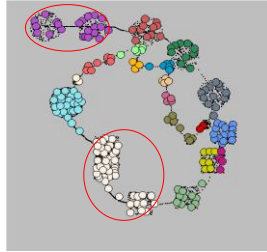
States	Sensor	Cost
Engagement	Chair Pressure Sensors	~\$200
Attention, Engagement, Workload	EEG	~\$200
Attention, Workload	Eye-tracker	~\$500
  - **state classification using physiological sensors (Brawner and Goldberg, 2012; Goldberg & Brawner, 2012; Kokini, et al, 2012)**
    - **EEGs – Advanced Brain Monitoring, Emotiv Epoch, and Neurosky**
    - **GSR sensors – Biopac, Affectiva Q sensor**

SFC Paul Ray Smith Simulation & Training Technology Center  
 TECHNOLOGY DRIVEN. WARFIGHTER FOCUSED.  
 PUBLIC RELEASE - DISTRIBUTION UNLIMITED

54

Various machine learning techniques have been evaluated for use in classifying learner states. Slide 55 illustrates a clustering technique called “growing neural gas”. Learner data may be labeled (supervised), unlabeled (unsupervised) or semi-supervised. If you are interested in machine learning techniques, check out WEKA, an open-source software tool for machine learning: <http://www.cs.waikato.ac.nz/ml/weka/>.

- **Approach: clustering and classification using supervised, semi-supervised, and unsupervised machine learning techniques**



- **offline modeling**
  - leading to macro-adaptive instructional decisions
- **online real-time assessment**
  - leading to micro-adaptive instructional decisions

#### **Growing Neural Gas Clustering Technique**



SFC Paul Ray Smith Simulation & Training Technology Center

TECHNOLOGY DRIVEN. WARFIGHTER FOCUSED.

PUBLIC RELEASE - DISTRIBUTION UNLIMITED

55

In an effort to develop ITS best practices for learner modeling, ARL convened a group of experts in 2012 to examine the state of practice, emerging concepts, and future directions. This information was captured in the first volume of the *Design Recommendations for ITSs*, which is available for free at: <https://gifttutoring.org/documents/42>.

#### **University of Memphis – September 2012**

- **ARL-HRED (Sottolare, Holden, Goldberg, Brawner, Sinatra)**
- **University of Memphis (Graesser, Hu, Olney, Pavlik, Rus)**
- **OSD ADL Initiative (Durlach)**
- **Carnegie Mellon University (Aleven)**
- **Worcester Polytechnic Institute (Baker)**
- **Arizona State University (VanLehn, Burleson)**
- **Institute for Defense Analyses (Fletcher)**
- **Office of Naval Research (Perez)**
- **AFRL (Douglass)**
- **University of Pittsburgh (Lesgold)**
- **North Carolina State University (Lester)**
- **University of Colorado (Nielsen)**
- **Eduworks, Inc. (Robson)**
- **University of Massachusetts – Amherst (Woolf)**
- **University of Canterbury, NZ (Mitrovic)**
- **University of British Columbia, CA (Conati)**



SFC Paul Ray Smith Simulation & Training Technology Center

TECHNOLOGY DRIVEN. WARFIGHTER FOCUSED.

PUBLIC RELEASE - DISTRIBUTION UNLIMITED

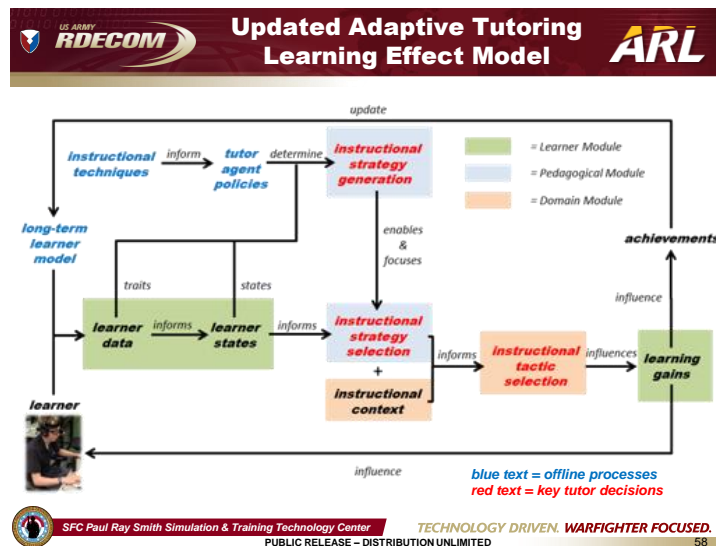
56

If you were to build a learner model, what kinds of data would you want to capture and what states would you want to classify/detect?

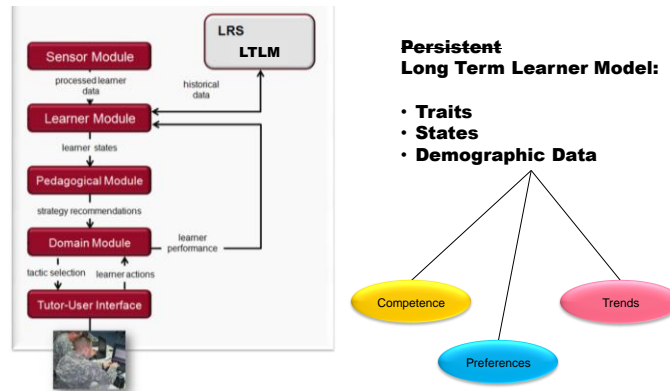
## What should be in a learner model?

**Don't look ahead...  
Make your own list**

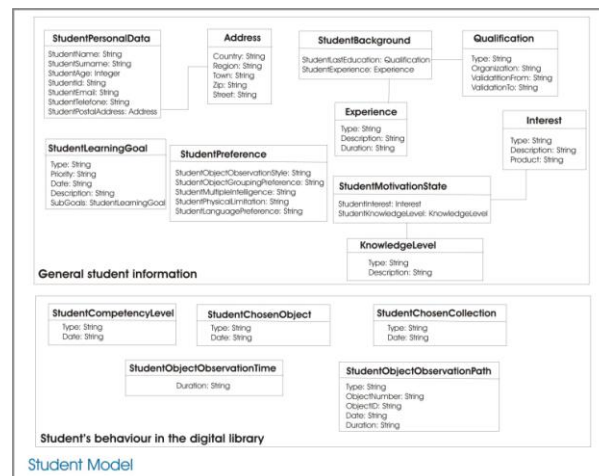
Learner data, states, traits, and demographics may be useful in the ITS decision processes, but data are generally expensive to collect and maintain. So, we want to be selective about which data we choose for our model.



LTLMs may span careers or lifetimes of learners and are used to store enduring, variable, and transient characteristics of the learner, including traits, states, and demographics.



Slide 60 shows some student (learner) data that is separated into general information and recorded behaviors.



Panewa, D. (2006, September). Use of Ontology-based Student model in Semantic-oriented Access to the Knowledge in Digital Libraries. In proc. of HUBUSKA Fourth Open Workshop "Semantic Web and Knowledge Technologies Applications", Varna, Bulgaria (pp. 31-41).

Learner characteristics may be enduring, but even enduring characteristics may change over a long period of time. For this reason, the label of long-term learner model may be more appropriate than persistent learner model.

## **Enduring Characteristics... maybe?**

- **Gender**
- **Culture First language**
- **Physical constraints (e.g., color blind/deaf)**
- **Qualifications/certifications**
- **Work History**
- **Education achievements and history**
- **Transcripts**
- **Affiliations**
- **Values**
- **Personality**

Slide 62 lists learner characteristics that are variable but fairly persistent.

## **Variable, but fairly persistent long term...**

- **Second language(s)**
- **Domain Competencies**
- **Security Clearance level**
- **Inductive Reasoning Capacity**
- **Working memory Capacity**
- **Divergent Associative Learning Capacity**  
(ability to connect new to prior knowledge)
- **Learner contact info; identifier**
- **Learner relations (e.g., teacher/class id)**
- **Learner security credentials (e.g., password)**
- **Learner preference information**
- **Learner portfolio information**

Slide 63 lists transient characteristics that may be worth tracking/detecting.



#### **Transient**

- **Current task**
- **Current time constraints**
- **Current affect**
- **Current goals**
- **Current location (geographical)**
- **Current time of day/week**
- **Current competency model (within learning experience)**
- **Current context (e.g., meeting/car, work, home, etc.)**
- **Physiological state**



SFC Paul Ray Smith Simulation & Training Technology Center

TECHNOLOGY DRIVEN. WARFIGHTER FOCUSED.

PUBLIC RELEASE - DISTRIBUTION UNLIMITED

63

We just discussed what might be useful to include in an individual learner model. What should be in a model of a team of learners?



**What should be in a  
team model?**

**Don't look ahead...  
Make your own list**

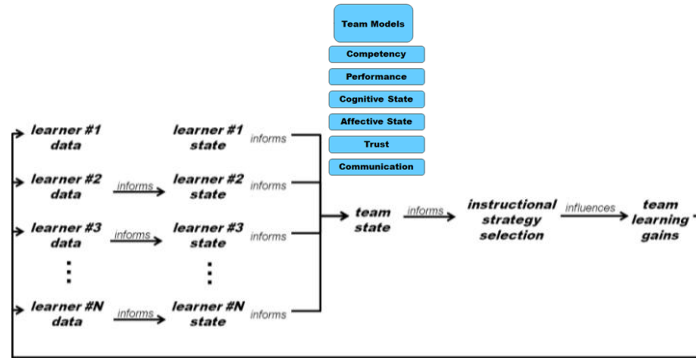


SFC Paul Ray Smith Simulation & Training Technology Center

TECHNOLOGY DRIVEN. WARFIGHTER FOCUSED.

PUBLIC RELEASE - DISTRIBUTION UNLIMITED

64



Fletcher, J.D. and Sottolare, R. (2013, in press). Shared Mental Models and Intelligent Tutoring for Teams. In Sottolare, R., Hu, X., Graesser, A. and Holden, H. (Eds.) *Design Recommendations for Intelligent Tutoring Systems: Learner Modeling, Volume I*. Army Research Laboratory.



SFC Paul Ray Smith Simulation & Training Technology Center

TECHNOLOGY DRIVEN. WARFIGHTER FOCUSED.

PUBLIC RELEASE – DISTRIBUTION UNLIMITED

65

- **Structured Literature Review**
  - **Individual Tutoring**
  - **Team Performance**
- **Model Constructs**
  - **What models are needed?**
  - **What variables influence each model?**
  - **What variables are observable/unobservable?**
  - **What is the effect size of each variable?**
  - **How do we measure critical variables?**
- **Structural Equation Models**
- **Model – Test – Model**

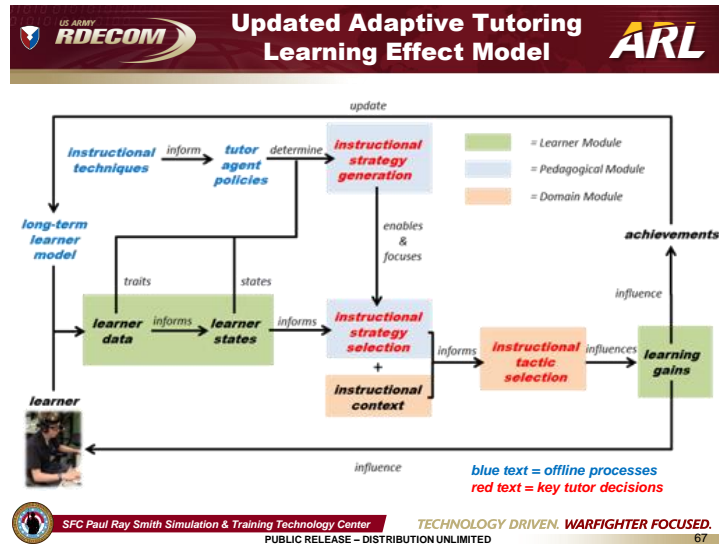


SFC Paul Ray Smith Simulation & Training Technology Center

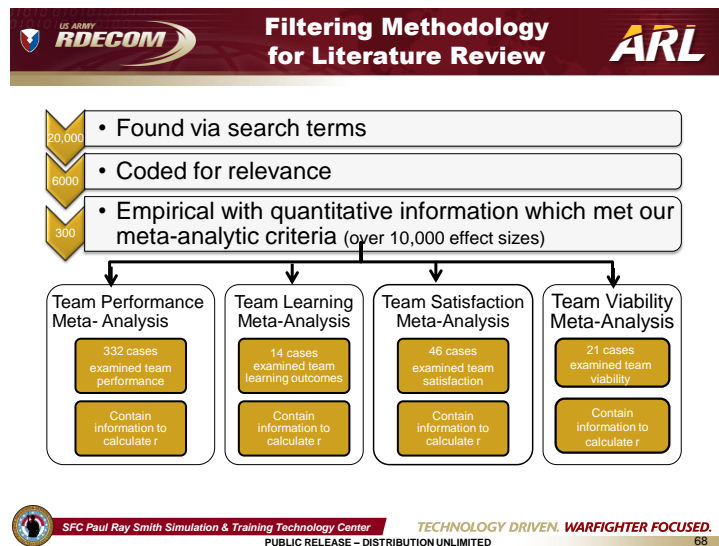
TECHNOLOGY DRIVEN. WARFIGHTER FOCUSED.

PUBLIC RELEASE – DISTRIBUTION UNLIMITED

66



In 2013, an extensive review of the literature was undertaken relative to the target team models identified by Sottolare et al. (2011) and later described by Sottolare (2013). A sample of the outcome for the performance model is shown in Slide 68.



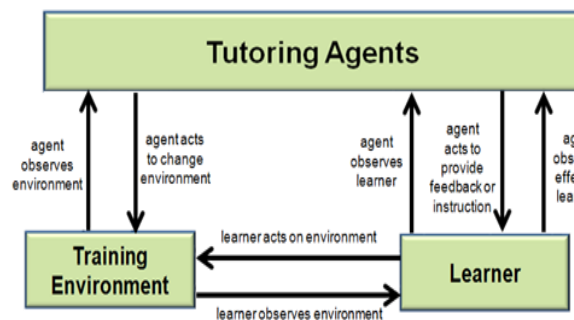
The results of the team performance model literature review revealed the following antecedents (influencers) of team performance (see Slide 69).



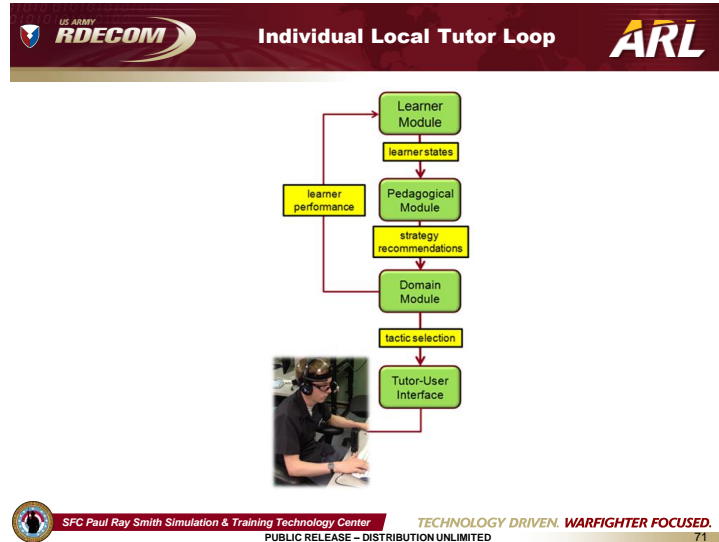
Outcome	K <sup>1</sup>	N <sup>2</sup>	Ro	Rho	% Variance accounted for
Overall	183	12910	.18	0.19*	30.0%
Communication	48	3367	.23	0.26*	26.2%
Coordination	25	1798	.21	0.23*	28.8%
Conflict	32	2061	-0.08	-0.09*	23.3%
Coaching/Leadership	50	3863	.22	0.24*	33.3%

1. K is the number of effect studies analyzed for this outcome
  2. N is the number of individuals evaluated in this outcome
  3. Rho is the corrected effect size, Ro is the uncorrected effect size; both weighted for sample size
- \*Statistically significant; confidence interval excludes zero

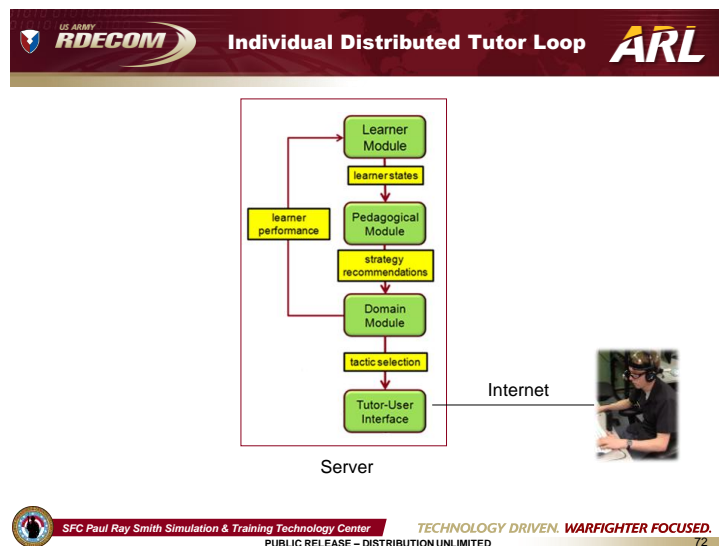
The process of identifying antecedents for each of the primary team models continued, and these are being used to construct initial team models for GIFT. Moving forward, we will examine the relationship between individual and team modeling. Slide 70 shows the interaction between the tutoring agents, the training environment, and the learner. Tutoring agents for teams may have similar functions but will track progress toward team objectives.



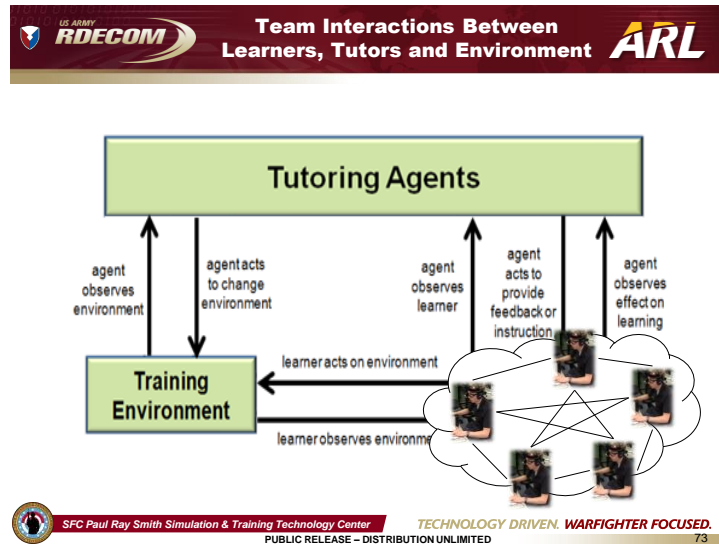
You have seen this diagram before—it is the individual tutor loop.



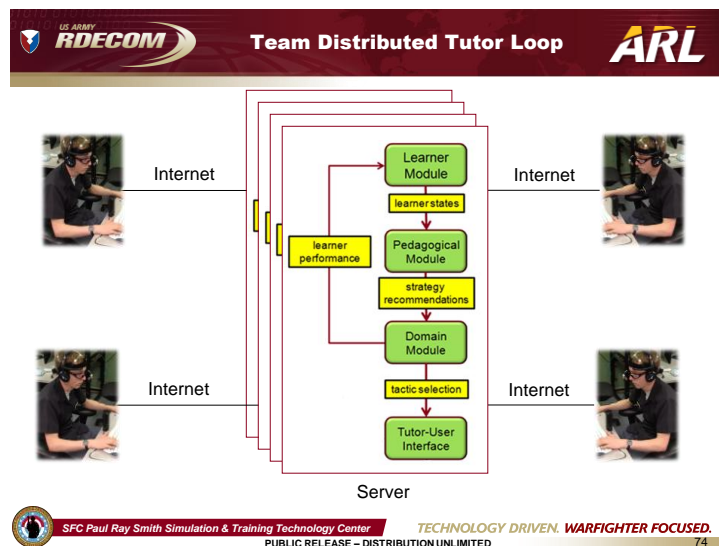
The tutor loop in Slide 72 shows a distributed or server-based interaction between an individual learner and the tutor. How will this need to be modified for teams?






Going back to the agent-environment-learner interaction for a moment, Slide 73 shows interaction between a team of 5 learners and the tutoring agents, a team of 5 learners and training environment, and finally, what is different in this diagram, interaction between learners who must be accounted for in the team models of the tutor.




Slide 74 shows individual learners interacting with their own tutor loops (something must moderate/manage the team interaction), interaction between the learners (communication, trust, performance, shared mental models [cognition, affect]), and how competency influences the other models.




Team modeling has evolved into 6 state models with consideration for 2 additional models for context and culture pending the determination of their influence on team performance.

<div> <div>  <div>Team State Models</div>  </div> </div>	
Team Outcome State Models	<ul style="list-style-type: none"> <li>• Performance, Learning</li> <li>• Viability, Satisfaction</li> </ul>
Team Competency State Model	<ul style="list-style-type: none"> <li>• Surface-Level Composition</li> <li>• Deep - Level Composition</li> </ul>
Team Cognitive State Models	<ul style="list-style-type: none"> <li>• Team Mental Models</li> <li>• Transactive Memory Systems</li> <li>• Situational Awareness</li> </ul>
Team Affective State Models	<ul style="list-style-type: none"> <li>• Collective Efficacy (Attitudes), Cohesion (Attitudes)</li> <li>• Justice (Attitudes), Effort (Attitudes)</li> <li>• Cooperation (Attitudes)</li> </ul>
Team Trust State Models	<ul style="list-style-type: none"> <li>• Trust, Psychological Safety</li> </ul>
Team Communication Models	<ul style="list-style-type: none"> <li>• Coordination( Mutual Support, Reflexivity, Monitoring, Conflict (Task Conflict, Relationship Conflict)/Conflict Management</li> <li>• Leadership, Communication, Transition (strategy) and Action (tactic) processes, Interpersonal</li> </ul>
Other Elements to Consider	<ul style="list-style-type: none"> <li>• Context</li> <li>• Culture</li> </ul>
<div>  <div> <div>SFC Paul Ray Smith Simulation &amp; Training Technology Center</div> <div> <div>TECHNOLOGY DRIVEN. WARFIGHTER FOCUSED.</div> <div>PUBLIC RELEASE – DISTRIBUTION UNLIMITED</div> </div> </div> </div>	

Each of the team models is reviewed in Slides 76–82.



Team Outcome State Models




- **Performance**
- **Learning**
- **Viability\***
- **Satisfaction\***

\* **Post-exercise**


A quantitative or qualitative evaluation of the status of team outcomes during any portion of the team's performance period.

Outcomes include:

- the subjective judgment or objective evaluation of team objective accomplishment
- the degree to which team members gained valuable skills or knowledge
- the willingness to continue to work with the same team in the future
- how much the team enjoyed working with one another.



Team outcome model updates are event-driven and based on changes to the Team Outcome State Models. As team members complete assigned tasks and progress toward team goals/objectives, their performance and learning is registered within the individual ITS' Team Outcome State Models and the ITS then generates an update message to the other ITS so all Team Outcome State Models are synchronized with individual contributions to team performance and learning objectives.



SFC Paul Ray Smith Simulation & Training Technology Center

TECHNOLOGY DRIVEN. WARFIGHTER FOCUSED.

PUBLIC RELEASE – DISTRIBUTION UNLIMITED

38



## Team Competency State Model



- **Surface Level Composition**
- **Deep Level Composition**

Individual team member characteristics that have the potential to impact or influence the accomplishment of team goals.

Individual knowledge, skills, abilities, and experience in the domain are moderators of success.

Interdependence of tasks and matching of skills and roles may also influence the accomplishment of team goals.

Compatible values (e.g., **culture**) and personality may also be moderators.




This model provides an index of team competency based on a composite of the competence levels of individual team members. Successful/unsuccessful performance influences individual competence and may influence team competence. Any significant changes in individual performance of team tasks are assessed by the individual competency state model to determine if the threshold has been met to change individual competency (e.g., beginner, journeyman or expert). Changes in individual competency may or may not be of sufficient significance to affect a change in the team competency state model, but if a change in the team competency state model occurs, a message is generated to update the team competency state models of the other team members.




SFC Paul Ray Smith Simulation & Training Technology Center


TECHNOLOGY DRIVEN. WARFIGHTER FOCUSED.

PUBLIC RELEASE – DISTRIBUTION UNLIMITED

See Fletcher and Sottolare (2013) for additional insight on Shared Mental Models.




## Team Cognitive State Models




- **Team (Shared) Mental Models**
- **Transactive Memory Systems**
- **Situational Awareness**

An evaluation of the shared cognitive state of all team members. This evaluation can include the degree to which team members:

- structure knowledge in a similar manner
- understand the roles, expertise, and expectations of fellow team members
- have a shared impression of several aspects of the team's status (e.g., slack resources, progression towards team objectives)



This state model is a compound model of the Cognitive State of all team members. Cognitive State models already exist as part of the individual ITS, but synchronization of this information with all the team member's ITS is critical in assessing the function of the team. Depending on the collaborative task and the roles of team members in accomplishing that task, the cognitive model may be key in determining instructional strategies. For example, for some tasks the weakest understanding of the task among team members may indicate the risk of completing the task successfully. For other tasks, only key team members may need to have higher understanding of the task to reach a successful outcome.



SFC Paul Ray Smith Simulation & Training Technology Center

TECHNOLOGY DRIVEN. WARFIGHTER FOCUSED.

PUBLIC RELEASE – DISTRIBUTION UNLIMITED



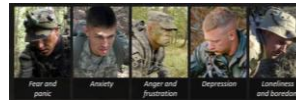
## Team Affective State Models



- **Attitudes (not observable)**
  - **Collective Efficacy**
  - **Cohesion**
  - **Justice**
  - **Effort**
  - **Cooperation**
  - **Trust (next slide)**

The general of feelings of team members towards one another during team interaction. This can include, but is not limited to feelings regarding

- (a) the team's ability to accomplish their goals
- (b) the team emotional sentiments towards one another



### Values-Attitudes-Behaviors

This state model is a compound model of the Affective State of all team members. Affective State models already exist as part of the individual ITS, but distribution of this information to all the team members ITS is critical in assessing the function of the team. For example, if team performance is below expectations and the affective state of one or more team members is negative, knowledge of their state by other individual ITS provides the opportunity to prompt their associated team members to take action (e.g., communicate – support or direct).



## Team Trust State Models



- **Trust**
- **Credibility**
- **Psychological Safety (Openness)**

The shared belief that all team members will fulfill their role responsibilities, perform delegated tasks, and not attack fellow team members for expressing their opinion.



This state model is a compound model of the Affective State of all team members. Affective State models already exist as part of the individual ITS, but distribution of this information to all the team members ITS is critical in assessing the function of the team. For example, if team performance is below expectations and the affective state of one or more team members is negative, knowledge of their state by other individual ITS provides the opportunity to prompt their associated team members to take action (e.g., communicate – support or direct). This team state model is a compound model of the trust states existing between team members. The trust relationships are bi-direction in that Team Member „A“ may trust Team Member „B“ more, the same or less than Team Member „B“ trusts Team Member „A“. Trust is influenced by several factors including perceived competency, perceived integrity, perceived benevolence, knowledge of the other team members (Hung, Dennis and Robert, 2004) and perceived benefits of the relationship (Gujral, DeAngelis, Fullam and Barber, 2006). Since teams work toward common goals where roles and responsibilities are distributed, perceived competency is an essential element of team performance. The perception that other team members may be unable to perform their tasks is detrimental to trust and team performance. Personality may also play a part in trust.

Individuals with low openness and/or high neuroticism scores in the Five Factor Model of Personality (McCrae and Costa, 1994) may have developed habits unfavorable to the development of trust. Low openness scores might indicate an unwillingness to disclose information while high neuroticism scores might result in more frequent perception of events/interactions as negative. Positive or negative emotions can also influence the assimilation of information (Linnenbrink and Pintrich, 2002) and thereby communications, understanding and trust.

US ARMY RDECOM **Team Communications State Models** ARL

- **Coordination**
  - Mutual Support
  - Reflexivity
  - Monitoring
- **Conflict**
  - Task Conflict
  - Relationship Conflict
- **Leadership**
  - Leadership Styles
  - Shared Leadership
  - Leadership Behaviors

- **Communication (frequency, source, receiver(s))**
- **Transition Processes**
- **Action Processes**
- **Interpersonal Processes**
- **Conflict Management**
- **Organizational Citizenship Behaviors (OCBs)**

Observable behaviors between group members which either directly impact progression towards task completion or indirectly facilitate synchronization between team members.

This model is composed of interaction data between team members for the purpose of observing team cohesion and task execution. Providing accurate information in accordance with operating procedures, providing communications when asked, repeating communications to ensure delivery, sharing information and acknowledging receipt of information are all vital actions observed in teams with effective communication skills (U.S. Coast Guard, 1998). In team settings communication among members builds holistic situational awareness and coordinates future actions to be carried out. Based on events and interactions in a scenario, team members are responsible for updating one another in real-time



SFC Paul Ray Smith Simulation & Training Technology Center

TECHNOLOGY DRIVEN. WARFIGHTER FOCUSED.

PUBLIC RELEASE – DISTRIBUTION UNLIMITED

81

US ARMY RDECOM **Other Influencing Factors** ARL

- **Context**
  - Task or Project Characteristics
  - Autonomy
  - Interdependence
  - Familiarity
  - Team Tenure
  - Organization Type
  - Leader Characteristics (Age/Tenure)
  - Organizational Resources
- **Culture**
  - Individual Culture
  - Team Culture
  - Organizational Culture
  - National Culture
  - Team Climate
  - Organizational Climate
  - Diversity





SFC Paul Ray Smith Simulation & Training Technology Center

TECHNOLOGY DRIVEN. WARFIGHTER FOCUSED.


PUBLIC RELEASE – DISTRIBUTION UNLIMITED

82

The team model development process is shown in Slide 83.

**Team Model Development Process**

- **Structured Literature Review**
  - **Individual Tutoring**
  - **Team Performance**
- **Model Constructs**
  - **What models are needed?**
  - **What variables influence each model?**
  - **What variables are observable/unobservable?**
  - **What is the effect size of each variable?**
  - **How do we measure critical variables?**
- **Structural Equation Models**
- **Model – Test – Model**



SFC Paul Ray Smith Simulation & Training Technology CenterTECHNOLOGY DRIVEN. WARFIGHTER FOCUSED.  
PUBLIC RELEASE – DISTRIBUTION UNLIMITED83

---

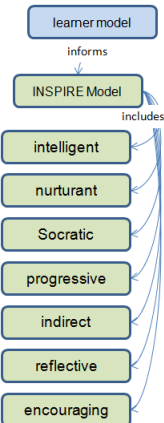
## 5. Instructional Management

---


Good instructional practices are hard to replicate. Modeling expert human tutors is a good place to start.

**Instructional Management Approaches**

- **Approach: Model successes of expert human tutors**
  - **INSPIRE\* model (Lepper, Drake & O'Donnell-Johnson, 1997)**
  - **facts about human tutoring (Person & Graesser, 2003)**
  - **importance of questioning (Dillon, 1988)**
  - **relation between deep reasoning questions and exam scores (Graesser & Person, 1994)**
  - **politeness strategies (Person, et al., 1995)**



```
graph TD; LM[learner model] -- informs --> IM[INSPIRE Model]; IM -- includes --> I[intelligent]; IM -- includes --> N[nurturant]; IM -- includes --> S[Socratic]; IM -- includes --> P[progressive]; IM -- includes --> Ind[indirect]; IM -- includes --> R[reflective]; IM -- includes --> E[encouraging];
```

SFC Paul Ray Smith Simulation & Training Technology CenterTECHNOLOGY DRIVEN. WARFIGHTER FOCUSED.  
PUBLIC RELEASE – DISTRIBUTION UNLIMITED85

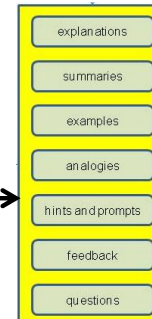


Dialogue-based tutors take turns interacting with the learner (see Slide 86) to improve the quality of their answers without giving them the answer. Dialogue-based tutors guide the learner and assess their understanding of concepts. GIFT has incorporated many of the web-based services used in AutoTutor and AutoTutor Lite to support dialogue-based tutoring.



### Tutoring Process (Person, et al, 1995, p. 167)

1. Tutor asks a question.
2. Student answers the question.
3. Tutor gives feedback on the answer.
4. Tutor and student collaboratively improve the quality of (or embellish) the answer.
5. Tutor assesses student's understanding of the answer"



SFC Paul Ray Smith Simulation & Training Technology Center

TECHNOLOGY DRIVEN. WARFIGHTER FOCUSED.

PUBLIC RELEASE - DISTRIBUTION UNLIMITED

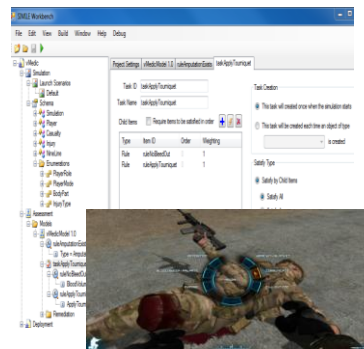
86

SIMILE is a tool to link learner actions in a simulation or game to performance assessments and ultimately to tutor decisions about instructional options (e.g., feedback, support, change in challenge level).



### • Approach: leverage objective-task framework in existing assessment engines (e.g., SIMILE)

- Student Information Models for Intelligent Learning Environments (SIMILE)
- standardized, adaptable, and generic mechanism for learner assessment in simulated training environments
- middleware with tools for the creation of assessment models that are distinct and separate from the simulation itself
  - Example Shown: Model rules for applying a tourniquet in the TC3 vMedic Trainer



SFC Paul Ray Smith Simulation & Training Technology Center

TECHNOLOGY DRIVEN. WARFIGHTER FOCUSED.

PUBLIC RELEASE - DISTRIBUTION UNLIMITED

87

The relationship between the tutor and the learner is critical to the learner's engagement and motivation. The learner should perceive the tutor as credible and supportive for significant learning to occur. While this might not be important for single exposures of the learner to the tutor, over the long term, it is critical for the learner to develop a relationship with the technology.

- ***Approach: Investigate the influence of the learner's perception of the tutor***
  - ***credibility and supportiveness of the tutor (Holden, 2012)***
  - ***learner expectations of the tutor (Holden and Goldberg, 2011)***
  - ***social pedagogical agents (Kim, Xu and Sharif, 2008)***
  - ***characteristics of learning companions (Kim, 2007; Kim, Baylor, Shen, and PALS Group, 2007)***

Holden, H. (2012). Understanding the Interaction Behavior of Pedagogical Agents' Emotional Support and Competency on Learner Outcomes and Agent Perceptions. In Proceedings of the Intelligent Tutoring Systems (ITS) 2012 Conference, Chania, Crete.

Holden, H. and Goldberg, B. (2011). Student Expectations and Tutor Acceptance: The Impact on Student Affect (Mood) and Future Usage Intentions. International Defense & Homeland Security Simulation Workshop in Proceedings of the ISM Conference. Rome, Italy, September 2011.

Another approach to managing instruction is to categorize instructional differences in different learning domains. Research is ongoing to determine generalized instructional management methods across and within learning domains.

- ***Approach: Investigate the influence of learning type in selecting effective instructional strategies in computer-based tutoring***
  - ***cognitive learning (Anderson and Krathwohl, 2000)***
  - ***affective learning (Krathwohl, et al., 1964; Goleman, 1995)***
  - ***psychomotor learning (Simpson, 1972)***
  - ***social learning (Sottolare, et al., 2011; Soller, 2001)***
  - ***hybrid learning***

Sottolare, R., Holden, H., Brawner, K. and Goldberg, B. (2011). Challenges and Emerging Concepts in the Development of Adaptive, Computer-based Tutoring Systems for Team Training. *Interservice/Industry Training Systems & Education Conference*, Orlando, Florida, December 2011.

Each of the learning categories (cognitive = thinking, affective = feeling, and psychomotor = doing) is reviewed in Slides 90–93.

**• Cognitive learning (thinking) – Anderson & Krathwohl, 2001**

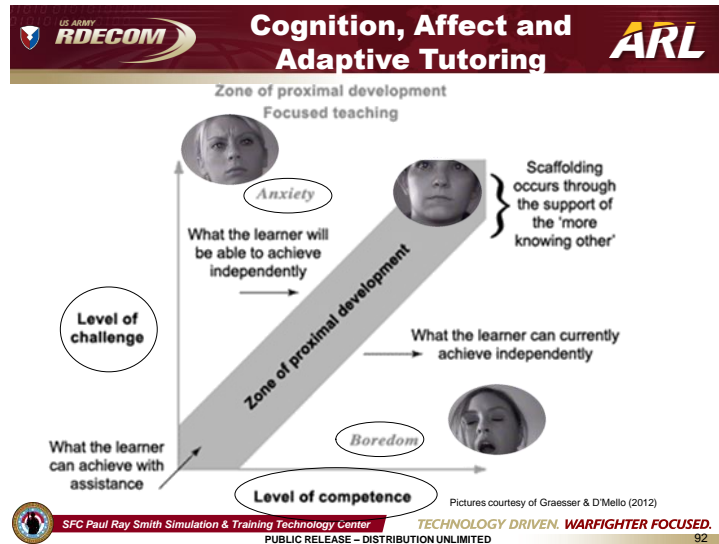
- **behaviors indicating increasingly complex and abstract mental capabilities**
- **Creating (high):** ability to put parts together to form a new whole
- **Evaluating:** ability to judge the value of learned material
- **Analyzing:** ability to break down material into its component parts
- **Applying:** ability to use learned material in new situations
- **Understanding:** ability to grasp the meaning of material
- **Remembering (low):** ability to recall previously learned material

Anderson, L. W., and Krathwohl, D. R. (Eds.). (2001). *A taxonomy for learning, teaching and assessing: A revision of Bloom's Taxonomy of Educational Objectives*. Complete edition, New York : Longman.

**▪ Affective learning (feeling) – Krathwohl, Bloom and Masia, 1964**

- **behaviors indicating emotional growth; the manner in which we handle emotions, such as feelings, values, appreciation, enthusiasms, motivations, and attitude**
- **Characterizing (commitment - high):** has a value system that controls their behavior
- **Organizing (responsibility):** organizes values into priorities; comparing, relating and synthesizing values
- **Valuing (appreciation):** the worth or value a person attaches to a particular object, phenomenon, or behavior
- **Responding (Interest):** active participation on the part of the learner
- **Receiving (awareness - low):** awareness, willingness to hear, selected attention

Krathwohl, D.R., Bloom, B.S., and Masia, B.B. (1964). *Taxonomy of Educational Objectives: Handbook II: Affective Domain*. New York: David McKay Co.



**Psychomotor Learning**

- **Psychomotor learning (doing) – Simpson, 1972**
  - **Includes physical movement, coordination, and the use of the motor-skill areas; development of these skills requires practice and is measured in terms of speed, precision, distance, procedures, or techniques in execution.**
  - **Origination (high):** creating new movement patterns to fit a particular situation
  - **Adaptation:** skills well developed and can be modified to fit special requirements
  - **Complex Overt Response:** skillful performance of complex movements
  - **Mechanism:** learned responses have become habitual
  - **Response:** early stages in learning complex skill; imitation; trial & error
  - **Set:** readiness to act
  - **Perception (low):** ability to use sensory cues to guide motor activity

Simpson, E. (1972). *The classification of educational objectives in the psychomotor domain: The psychomotor domain*. Vol. 3. Washington, DC: Gryphon House.

SFC Paul Ray Smith Simulation & Training Technology Center  
TECHNOLOGY DRIVEN. WARFIGHTER FOCUSED.  
PUBLIC RELEASE - DISTRIBUTION UNLIMITED

Another approach to enhanced adaptive instruction is to implement best practices based on learning theories. Two theories are Component Display Theory (Merrill et al. 1992) and the Zone of Proximal Development (Vygotsky 1978), which are described in Slides 94 and 95, respectively.



• **Strategies that account for the learner's state:**

- Gain attention and motivate
- Adapt to prior knowledge
- Adapt to type of knowledge being presented
- Adapt to learner attributes
- Adapt to the learner's ability (IQ, EQ, adaptability...)

Merrill, D., Reiser, B., Ranney, M., and Trafton, J. (1992). Effective Tutoring Techniques: A Comparison of Human Tutors and Intelligent Tutoring Systems. *The Journal of the Learning Sciences*, 2(3), 277-306.



SFC Paul Ray Smith Simulation & Training Technology Center

TECHNOLOGY DRIVEN. WARFIGHTER FOCUSED.

PUBLIC RELEASE - DISTRIBUTION UNLIMITED

94

**WHAT IS IT?**

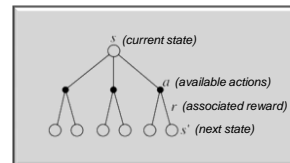
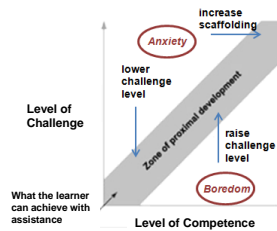
- Tools and methods to **adapt instruction** based on the **learner's state** (e.g., cognitive and affective) and level of **domain competence**

**WHAT DOES IT OFFER?**

- The ability to select **real-time instructional strategies** which automatically lower/raise the training scenario **challenge level** and regulate the type and frequency of **scaffolding** (support) provided to the learner

**TECHNICAL APPROACH:**

- **Literature Review** to identify negative learning states (e.g., anxiety, boredom, frustration) and associated effective strategies
- Develop **classification rules** for incorporation within GIFT (\*eM<sup>2</sup>AP)
- Develop a **Markov Decision Processes** to address uncertainty associated with learner state classification



\*eM<sup>2</sup>AP = engine for Macro & Micro-Adaptive Pedagogy

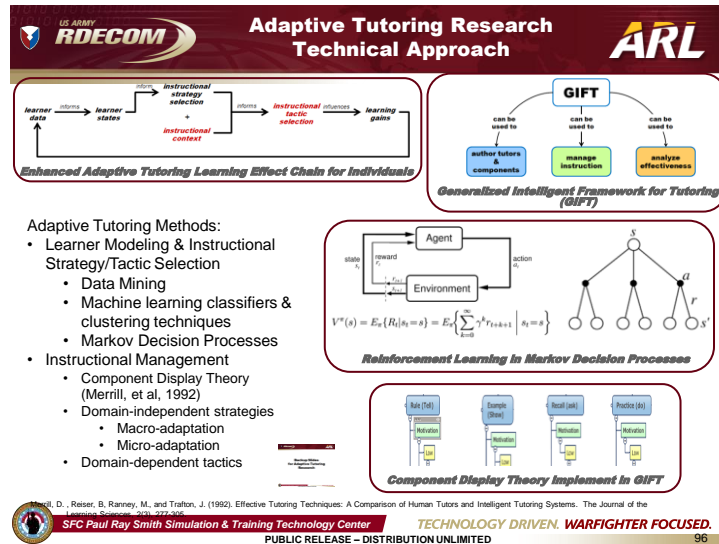


SFC Paul Ray Smith Simulation & Training Technology Center

TECHNOLOGY DRIVEN. WARFIGHTER FOCUSED.

PUBLIC RELEASE - DISTRIBUTION UNLIMITED

95



## 6. Domain Modeling

While domain modeling is primarily associated with presentation of content to the learner, it also includes the following aspects: modeling of experts (also known as an ideal student model), which is used to assess the progress of the learner and identify errors and misconceptions; assessment of performance; and presentation of tactics (actions by the tutor to present content, change content, provide feedback, or provide support).

Domain models for typical ITSs today are in well-defined domains (math or physics are popular) and are generally procedural in nature (simple). Very few tutors cover psychomotor domains and are generally desktop and cognitive. ARL is exploring methods to expand domains to allow them to support tutoring in a wider range of domains and a broader range of dimensions, as shown in Slide 98.

# Domain Modeling

**WHAT IS IT?**

- Tools and methods to **facilitate expansion** of traditional tutoring domains (well-defined, simple, static) to a **broader spectrum of military tasks** ranging from well-defined to ill-defined, from simple to complex, and from static to dynamic

**WHAT DOES IT OFFER?**

- The ability to support **effective tutoring** during training in increasingly **ill-defined, complex, and dynamic** training domains

**TECHNICAL APPROACH:**

- Investigate and identify a range of military training tasks along three dimensions: **definition, complexity and dynamics**
- Discover and innovate methods to support the **adaptive tutoring learning effect chain** for military training tasks of varying levels of **definition, complexity, and dynamics**

What is unique about elements of the adaptive tutoring learning effect chain as a function of definition, complexity and dynamics of tutoring domains?

- learner data
- learner states
- instructional strategies
- instructional tactics
- learning outcomes

SFC Paul Ray Smith Simulation & Training Technology Center

TECHNOLOGY DRIVEN. WARFIGHTER FOCUSED.

PUBLIC RELEASE – DISTRIBUTION UNLIMITED

98

Dynamic interaction modes and their associated characteristics are explored in Slides 99 and 100.

# Adaptive Tutoring Research Technical Approach

Interaction Mode	Environment	Learner Position	Learner Motion	Sensors	Sensory Interaction	Individual /Team
static	indoor	seated	head motion, posture changes, gestures	desktop sensors (e.g., eye tracker, head pose estimation)	visual, aural, olfactory	individuals and network-enabled teams
limited kinetic	indoor in confined instrumented spaces	standing, crouching, kneeling, laying	same as static mode plus limited locomotion	same as static mode plus motion capture	visual, aural, olfactory, haptic	individuals and co-located teams
enhanced kinetic	indoor/outdoor in confined instrumented spaces	standing, crouching, kneeling, laying	same as static mode plus full locomotion	same as static mode plus motion capture	visual, aural, olfactory, haptic	individuals and co-located teams
in the wild	outdoor in unrestricted, uninstrumented spaces	standing, crouching, kneeling, laying	unrestricted natural movement	portable sensor suites including motion capture	visual, aural, olfactory, haptic	individuals and co-located teams

Trainer

Trainee

Adaptive Tutoring Research

Adaptive Tutoring Research

Adaptive Tutoring Research

SFC Paul Ray Smith Simulation & Training Technology Center

TECHNOLOGY DRIVEN. WARFIGHTER FOCUSED.

PUBLIC RELEASE – DISTRIBUTION UNLIMITED

99

## Domain Modeling Interaction Modes

**WHAT IS IT?**

- Research, tools and methods to **facilitate interaction** with learners and **delivery of instruction** during a broad spectrum of military tasks ranging from static to highly dynamic

**WHAT DOES IT OFFER?**

- The ability to support **effective tutoring** during Soldier training in increasingly dynamic training modes:
  - static** (desktop training)
  - limited dynamic** (adaptive marksmanship training)
  - enhanced dynamic** (multi-learner tasks in instrumented spaces)
  - in-the wild** (instrumented learners)

**TECHNICAL APPROACH:**

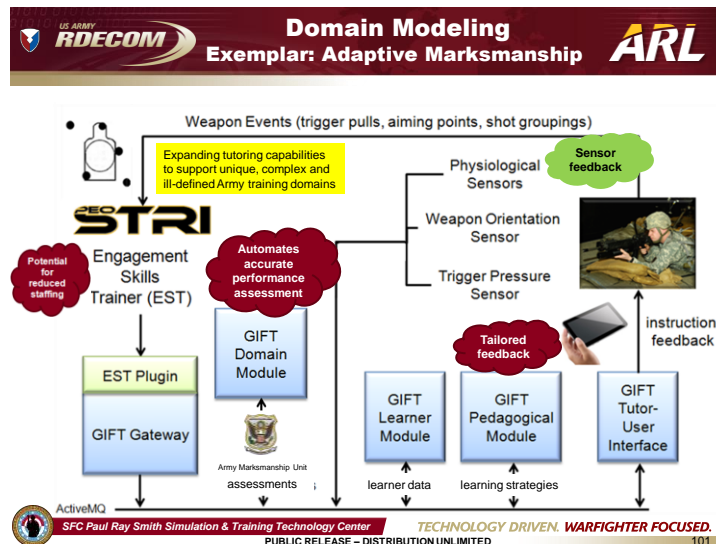
- Evaluate **interaction** required to support each training mode and **discover methods to facilitate**:
  - capture of learner and environment data
  - assessment of learner state
  - selection of optimal instructional strategies and tactics
  - presentation of tactics (e.g., feedback, direction)

Evaluation of interaction is a necessary precursor to support tutoring in dynamic military training domains (e.g., embedded training, mixed and augmented reality training, and live training)

SFC Paul Ray Smith Simulation & Training Technology Center  
PUBLIC RELEASE - DISTRIBUTION UNLIMITED

**TECHNOLOGY DRIVEN. WARFIGHTER FOCUSED.**  
100

An example of a more dynamic psychomotor domain is presented in Slide 101.

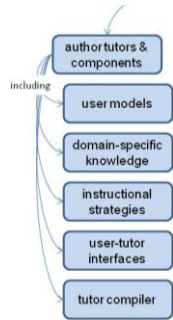


## 7. Authoring

Authoring may be divided into 2 primary areas: reuse and automation. Improving methods to be able to use existing training environments as adaptive tutors is a major goal of our research. Automated authoring methods are the most critical need in ITS development today. Tutors are expensive and laborious to author, and they require sets of specialized skills to develop them. A long-term goal is to have any person with expert domain knowledge be able to author an effective tutoring system.



**Authoring Goals for GIFT**  
(adapted from Murray, 1999; Murray, 2003)



- **Decrease the effort (time, cost, and/or other resources) for authoring and assessing CBTS;**
- **Decrease the skill threshold by tailoring tools for specific disciplines to author, assess and employ CBTS;**
- **Provide tools to aid the designer/author/trainer /researcher organize their knowledge;**
- **Support (i.e., structure, recommend, or enforce) good design principles (in pedagogy, user interface, etc.);**
- **Enable rapid prototyping of CBTS to allow for rapid design/evaluation cycles of prototype capabilities.**
- **Employ standards to support rapid integration of external training/tutoring environments (e.g., games) (Sottolare & Gilbert, 2011)**

Sottolare, R. and Gilbert, S. (2011). Considerations for tutoring, cognitive modeling, authoring and interaction design in serious games. Authoring Simulation and Game-based Intelligent Tutoring workshop at the Artificial Intelligence in Education Conference (AIED) 2011, Auckland, New Zealand, June 2011.



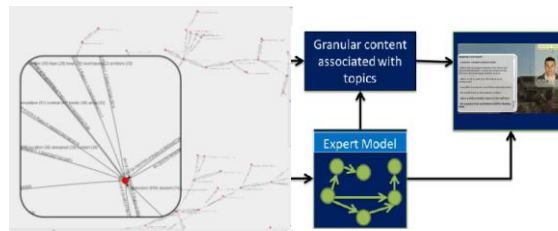
SFC Paul Ray Smith Simulation & Training Technology Center

TECHNOLOGY DRIVEN. WARFIGHTER FOCUSED.

PUBLIC RELEASE – DISTRIBUTION UNLIMITED

103

- **Approach: Investigate methods and develop tools for rapid automated development of expert models**
- **Expert model development is an intensive process**
- **Exploring automated methods to author via text analysis**
- **Integrate with tutoring system(s) which make instructionally relevant decisions**



SFC Paul Ray Smith Simulation & Training Technology Center

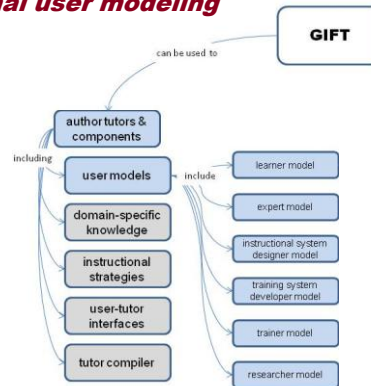
TECHNOLOGY DRIVEN. WARFIGHTER FOCUSED.

PUBLIC RELEASE – DISTRIBUTION UNLIMITED

104

• **Approach: functional user modeling**

- **standard structures and graphical user interfaces for a variety of users**
- **GUIs based on function (e.g., researcher) and functional competency**
  - **learners**
  - **subject matter experts**
  - **instructional system designers**
  - **system developers**
  - **trainers**
  - **researchers**



• **Approach: learner affect modeling**

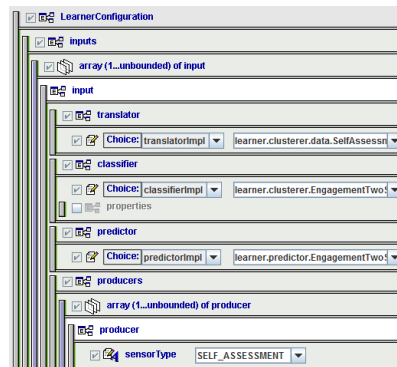
- **what does the tutor need to know about the learner to classify their affect?**
- **how does the tutor get that information?**
- **which affective states are important to recognize?**
- **how does classification of state influence instructional decisions?**



Graesser and D'Mello (2012)

• **Approach: learner configuration authoring tool**

- simple interface for authoring learner models
- tree structure driven by XML schema
- prevents learner model authoring errors by validating against the learner model XML schema
- provides ability to validate learner model using GIFT source w/o having to launch the entire GIFT architecture



SFC Paul Ray Smith Simulation & Training Technology Center

TECHNOLOGY DRIVEN. WARFIGHTER FOCUSED.

PUBLIC RELEASE – DISTRIBUTION UNLIMITED

107

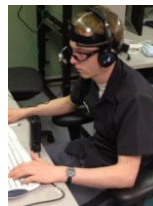
• **Approach: sensor configuration authoring tool**



• **Implemented sensors**

- **Affectiva QSensor**
  - electro-dermal activity (EDA)
  - skin temperature and acceleration
- **Emotiv EEG**
- temperature and humidity mouse (custom)
- Surrogate sensors for temp, humidity and assessment

- **behavioral sensors**
- **physiological sensors**
- **state classification models**



• **Sensors under consideration**

- NeuroSky and ABM EEGs
- Webcam (1Hz)
- Zephyr heart rate monitor
- Sonar distance sensor
- Pressure chair (custom)
- Pupil diameter (custom)
- Design Interactive EmoPro

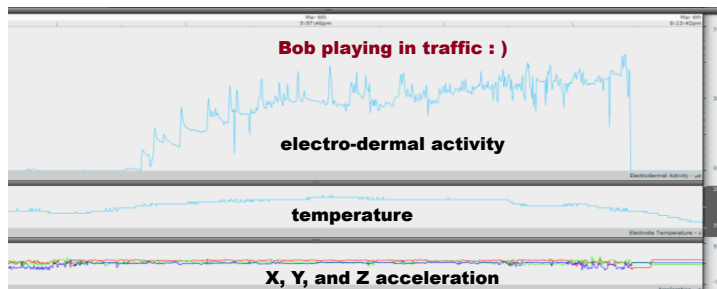


SFC Paul Ray Smith Simulation & Training Technology Center

TECHNOLOGY DRIVEN. WARFIGHTER FOCUSED.

PUBLIC RELEASE – DISTRIBUTION UNLIMITED

108

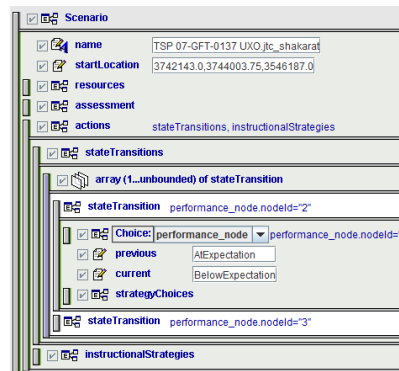


**Research question:** what is the minimum set of sensors needed to assess engagement, workload, motivational level and emotional state?

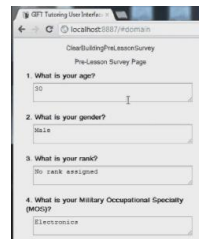


• **Approach: Domain Knowledge File (DKF) authoring tool (DAT)**

- simple interface for authoring DKFs
- tree structure driven by XML schema
- prevents DKF authoring errors by validating against DKF XML schema
- provides ability to validate DKF content using GIFT source w/o having to launch the entire GIFT architecture



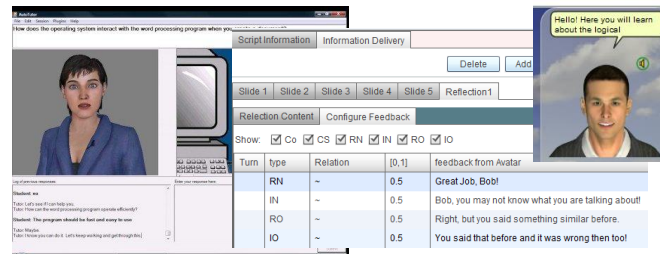
• **Approach: survey authoring tool**



- **author questions**
- **author surveys**
- **assign surveys**


Question Bank		
Create Question    Reply Set Editor		
ID	Question	Answer Type
1	What is your age?	Fill in the blank
2	What is your gender?	Fill in the blank
3	What is your rank?	Fill in the blank
4	What is your Military Occupational Specialty (MOS)?	Fill in the blank
5	How many hours of sleep did you get last night?	Fill in the blank
6	Have you had any caffeine in the last two hours?	Fill in the blank
7	Rate your level of experience with computers	Multiple Choice Single Select
8	How often do you play computer/video games?	Multiple Choice Single Select
9	What color was the pickup truck?	Fill in the blank
10	How many people did you see in the compound?	Fill in the blank
11	Were any people identified carrying weapons? If so, how many?	Fill in the blank
12	How many people/vehicles are around the target?	Fill in the blank
13	Describe a vehicle: # doors / color / make (sedan / truck / SUV / van)?	Fill in the blank
14	Were there any Military Age Males (MAMs)?	Fill in the blank
15	Were they carrying weapons? How many?	Fill in the blank

• **Approach: leverage elements of existing tutoring systems (e.g., AutoTutor & AutoTutor Lite)**




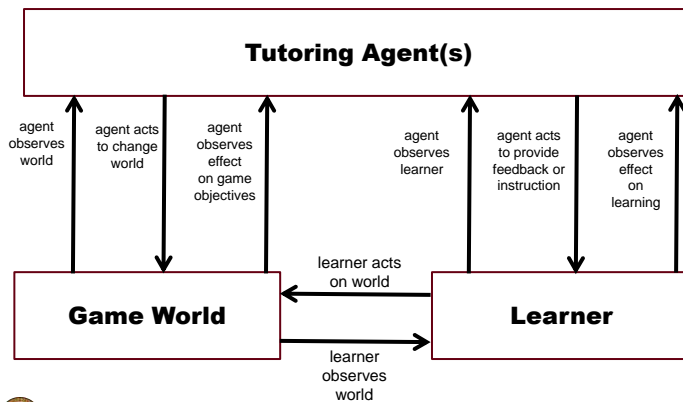
Turn	type	Relation	[0,1]	feedback from Avatar
RN	~	0.5	Great Job, Bob!	
IN	~	0.5	Bob, you may not know what you are talking about!	
RO	~	0.5	Right, but you said something similar before.	
IO	~	0.5	You said that before and it was wrong then too!	

• **Approach: game-based tutoring**

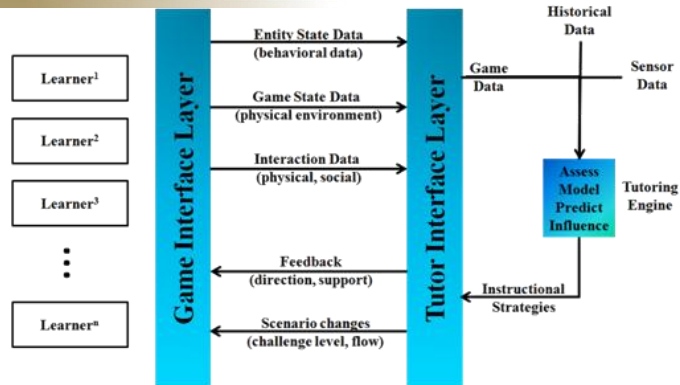


- **prototype integration with VBS2**
- **real-time feedback**
- **learner model influences challenge level within game**





US ARMY RDECOM **Game-based Tutoring** ARL



Sottile, R. and Gilbert, S. (2011). Considerations for tutoring, cognitive modeling, authoring and interaction design in serious games. Authoring Simulation and Game-based Intelligent Tutoring workshop at the Artificial Intelligence in Education Conference (AIED) 2011, Christchurch, New Zealand, June 2011.



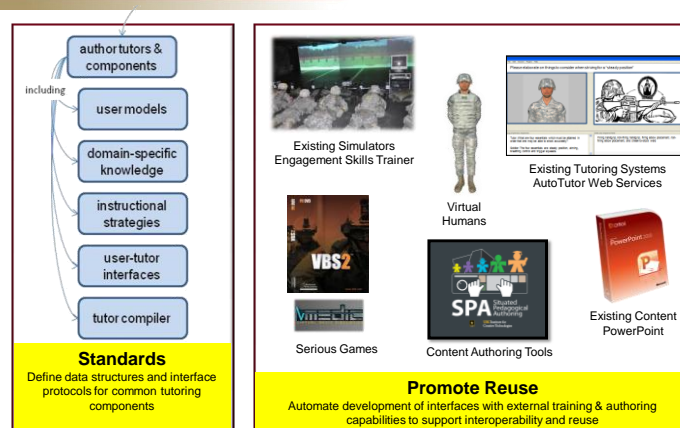
SFC Paul Ray Smith Simulation & Training Technology Center

TECHNOLOGY DRIVEN. WARFIGHTER FOCUSED.

PUBLIC RELEASE - DISTRIBUTION UNLIMITED

115

US ARMY RDECOM **Automated Authoring Standards and Reuse** ARL



SFC Paul Ray Smith Simulation & Training Technology Center

TECHNOLOGY DRIVEN. WARFIGHTER FOCUSED.

PUBLIC RELEASE - DISTRIBUTION UNLIMITED

116

#### WHAT IS IT?

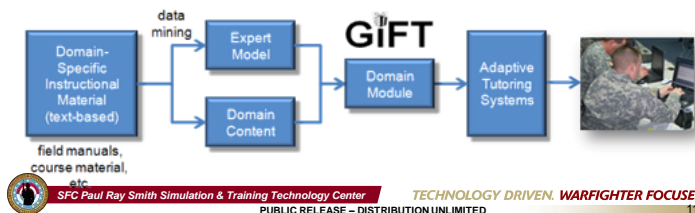
- Tools, and methods to **automate** the development of **expert models (modeling desired trainee behaviors)** for use by adaptive tutors;
- Expert models, part of the GIFT domain module, are used to assess learner performance and the correctness of learner actions during tutoring

#### WHAT DOES IT OFFER?

- Reduced time, cost, and skill** needed to develop expert models for training domains

#### TECHNICAL APPROACH:

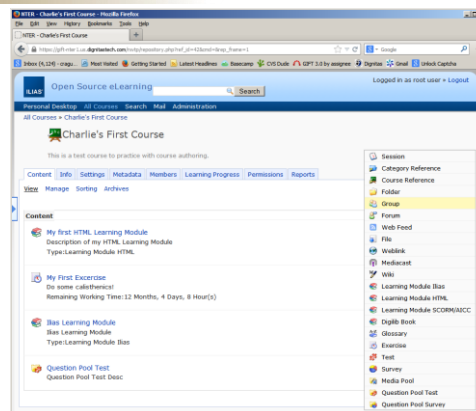
- Investigate and develop methods to automate expert model authoring by extracting **rules, principles, tasks, standards, conditions and hierarchical relationships** from text in field manuals and other text-based data sources through data mining techniques



**TECHNOLOGY DRIVEN. WARFIGHTER FOCUSED.**  
 PUBLIC RELEASE – DISTRIBUTION UNLIMITED

117

#### DOE's National Training & Education Resource (NTER)



**SFC Paul Ray Smith Simulation & Training Technology Center**

**TECHNOLOGY DRIVEN. WARFIGHTER FOCUSED.**  
 PUBLIC RELEASE – DISTRIBUTION UNLIMITED

118



**Tools for Rapid Development of Expert Models (TRADEM)**

TRADEM

Search...

**Workflow**  
 Click on any step in the workflow to make changes.

```

graph LR
    Project[Project] --> Corpus[Corpus]
    Corpus --> DomainGlossary[Domain Glossary]
    DomainGlossary --> ExpertModel[Expert Model]
    ExpertModel --> Tutor[Tutor]
      
```

**SFC Paul Ray Smith Simulation & Training Technology Center**

**TECHNOLOGY DRIVEN. WARFIGHTER FOCUSED.**

PUBLIC RELEASE – DISTRIBUTION UNLIMITED

119

**Tools for Rapid Development of Expert Models (TRADEM)**

Workflow

Click on any step in the workflow to make changes.

```

graph LR
    Project[Project] --> Corpus[Corpus]
    Corpus --> DomainGlossary[Domain Glossary]
    DomainGlossary --> ExpertModel[Expert Model]
    ExpertModel --> Tutor[Tutor]
      
```

**Projects**  
 Select a project to continue.

Project Name	Action
Civil_Affairs_Demo.apf	Click to Edit
Me.apf	Click to Edit
Relief2.apf	Click to Edit
Relief.apf	Click to Edit
Medical.apf	Click to Edit
Test1.apf	Click to Edit
ITSEC.apf	Click to Edit
ITsec-1.apf	Click to Edit

Add a New Project

**SFC Paul Ray Smith Simulation & Training Technology Center**

**TECHNOLOGY DRIVEN. WARFIGHTER FOCUSED.**

PUBLIC RELEASE – DISTRIBUTION UNLIMITED

120

**Tools for Rapid Development of Expert Models (TRADEM)**

### Workflow

Click on any step in the workflow to make changes.

### Corpora

Select a corpus to generate an expert model.

Keith_Corpus.tcf Click to Edit	me.tcf Click to Edit	CAFM_Ch_2.tcf Click to Edit	Workout.tcf - click to Edit Open
ITSEC.tcf Click to Edit	Itsec-1.tcf Click to Edit	TRADEM.tcf Click to Edit	DefaultName.tcf Click to Edit

SFC Paul Ray Smith Simulation & Training Technology Center

TECHNOLOGY DRIVEN. WARFIGHTER FOCUSED.

PUBLIC RELEASE – DISTRIBUTION UNLIMITED

121

**Tools for Rapid Development of Expert Models (TRADEM)**

### Corpus Edit

**BioMed**

Properties
Save
Cancel

No Pending Uploads

Selected files for this corpus

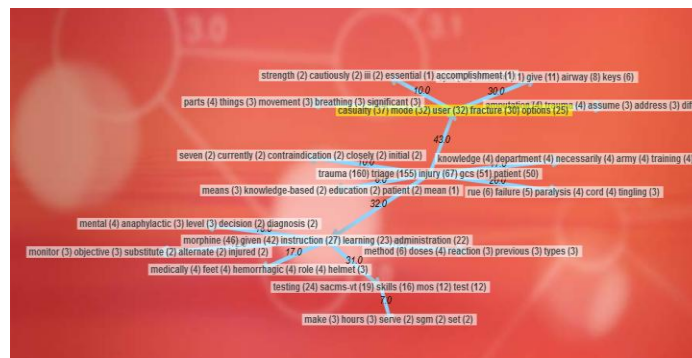
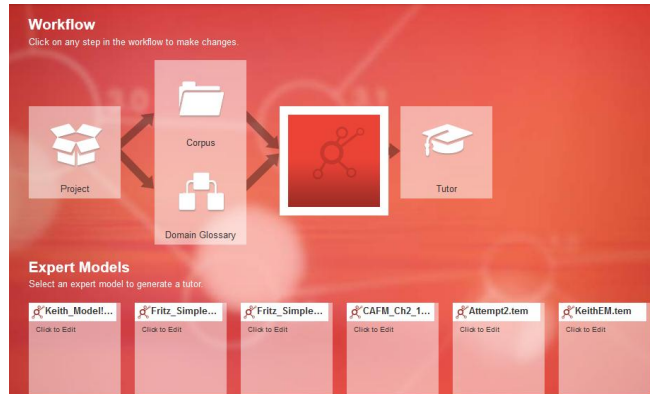
Learning Ph...	Not all links ...	EVEX: A Pub...	Fast and sim...	Unsupervised...
----------------	-------------------	----------------	-----------------	-----------------

SFC Paul Ray Smith Simulation & Training Technology Center

TECHNOLOGY DRIVEN. WARFIGHTER FOCUSED.

PUBLIC RELEASE – DISTRIBUTION UNLIMITED

122



**Tools for Rapid Development of  
Expert Models (TRADEM)**

**Workflow**  
Click on any step in the workflow to make changes.

```

graph LR
    Project[Project] --> Corpus[Corpus]
    Corpus --> DomainGlossary[Domain Glossary]
    DomainGlossary --> ExpertModel[Expert Model]
    ExpertModel --> Tutor[GIFT-compatible Tutor or Chatbot Tutor]
            
```

**Tutors**  
Select a tutor to export topics.

Civil Affairs Cha Demo.tut - Click to Edit  
Open

Fritz\_Simple...  
Click to Edit

Fritz\_Simple...  
Click to Edit

Attempt2.tut  
Click to Edit

T1.tut  
Click to Edit

SFC Paul Ray Smith Simulation & Training Technology Center

TECHNOLOGY DRIVEN. WARFIGHTER FOCUSED.  
PUBLIC RELEASE – DISTRIBUTION UNLIMITED

125

**Situated Pedagogical Authoring**

- What is it?
  - Providing ITS content in an environment that is as *similar to the learner's environment as possible*
  - think WYSIWYG
- Hypotheses: Situated authoring will enable authors to...
  - Gain competence with the authoring tool more quickly
  - Produce more *complete* and *pedagogically effective* intelligent tutoring content

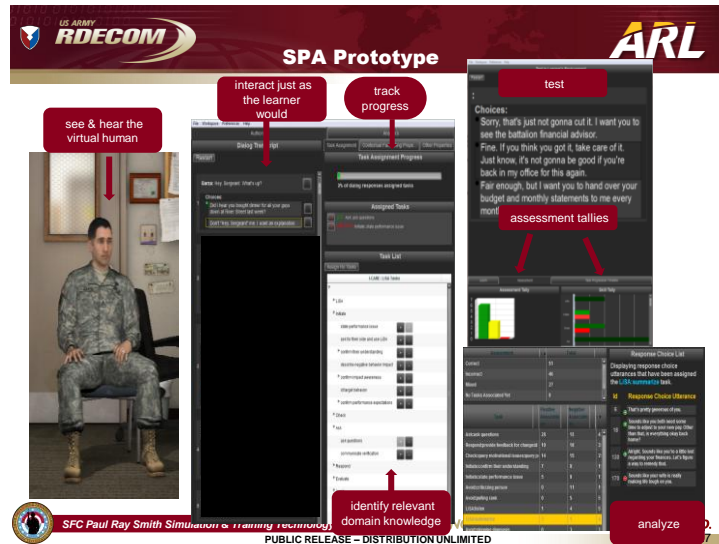
(than less situated authoring tools)

SFC Paul Ray Smith Simulation & Training Technology Center

TECHNOLOGY DRIVEN. WARFIGHTER FOCUSED.  
PUBLIC RELEASE – DISTRIBUTION UNLIMITED

126

62



## 8. Analysis of Effect

An important part of ITS research is to determine the best (most effective) methods of learner modeling, instructional management (pedagogical strategies/recommendations), and domain modeling (e.g., expert modeling, assessment, and content and tactics presentation) to optimize outcomes (e.g., learning, performance, retention, competence).

How might this research and analysis be enabled?

US ARMY RDECOM Analysis Analysis Testbed ARL

**WHAT IS IT?**

- Investigation and creation of a **prototype design tool** to support planning, execution, and analysis of results for comparative evaluations of adaptive tutoring systems, components, tools, models, and methods

**WHAT DOES IT OFFER?**

- The ability to **rapidly assess the effect** of a particular tutoring technology compared to existing or emerging techniques

**TECHNICAL APPROACH:**

- Identify and prototype tools** to conduct analyses:
  - tutor vs. traditional instructional methods
  - intervention vs. non-intervention studies
  - learner model comparison studies
  - instructional strategies/tactics comparison studies
  - ablative tutoring studies

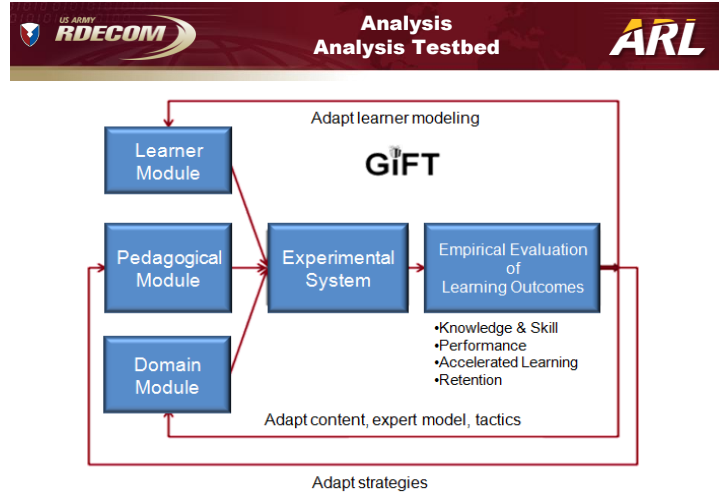
learners + Analyses = most effective adaptive tutoring systems, components, tools, models, and methods

GIFT

SFC Paul Ray Smith Simulation & Training Technology Center TECHNOLOGY DRIVEN. WARFIGHTER FOCUSED.


PUBLIC RELEASE – DISTRIBUTION UNLIMITED 129

The analysis test bed within GIFT allows for scientific evaluation of each element and subelements of a tutoring system design. The test-bed methodology shown in Slide 130 is based on Hanks et al.'s (1993) test-bed approach. Effect sizes analyzed using this test bed are based on Cohen's *d* (1992).




## Event Reporting Tool (ERT)

The screenshot shows the Event Reporting Tool (ERT) interface. On the left, under 'Select Event Sources', there is a list of event sources including 'outputtingmessage' and several 'domainSession' entries with timestamps. On the right, under 'Generate Report For', there is a dropdown menu for 'Select the Events of Interest' and a table for 'Customize the Default Columns'. The table has columns for 'Column Name', 'Column Header', and checkboxes for inclusion. Below the table, there are fields for 'Merge By Column', 'Sort By Column', 'Empty Cell Value', and 'Report File Name'. At the bottom, there are 'Create File' and 'Cancel' buttons.




**GIFT available at**  
[www.GIFTtutoring.org](http://www.GIFTtutoring.org)



[Home](#) [Help](#)

**GIFT**  
[WIKI](#) [FAQ](#) [Collaborators](#) [Activity](#) [News](#) [Downloads](#)

**Overview**  
**Generalized Intelligent Framework for Tutoring (GIFT)**  
[Share GIFT with Your Friends!!!](#)  
 [Facebook](#)  
[Description](#) | [Background](#) | [Research Goals](#) | [Obtaining GIFT Software](#) | [Features](#) | [More Information on GIFT](#) | [Releases](#)

**Description**  

GIFT is an empirically-based, service-oriented framework of tools, methods and standards to make it easier to author computer-based tutoring systems (CBTS), manage instruction and assess the effect of CBTS, components and methodologies. GIFT is being developed under the Adaptive Tutoring Research Science & Technology project at the Learning in Intelligent Tutoring Environments (LITE) Laboratory, part of the U.S. Army Research Laboratory - Human Research and Engineering Directorate (ARL HRED).

**Background**  

The technology gap for a reusable CBTS framework to support individual and small team tutoring was identified through a review of the intelligent tutoring systems (ITS) literature in 2009-2010 and the Training and Doctrine Command (TRADOC) formalized the Army requirement for GIFT in their Army Learning Concept (2011). GIFT was brought to practice in 2011 by the LITE Lab team. The first public demonstration of GIFT was conducted at the Interservice/Industry Training Systems and Education Conference (IITSEC) in December 2011. The first release of GIFT was completed in May 2012.

While GIFT is being developed to facilitate the use of CBTS by the U.S. Army, the intent is to collaboratively develop GIFT and have it function as a "nexus" for CBTS research being conducted within government, industry and academia.


**Research Goals**  

Adaptive Tutoring research goals that are driving future GIFT development include:

- an ontology to represent the knowledge and concepts of CBTS, their relationships and their interactions
- automated tools and processes to author CBTS, their models, and components
- automated delivery methods for tailored instruction to individuals and small teams
- a set of reusable, domain-independent modules that include standard processes and structures
- a testbed methodology to support the systematic comparison and assessment of CBTS, their components, and instructional methods

**Obtaining GIFT Software**  

After registering on this site, the GIFT software, including source code, is available for download on the Files tab



**SFC Paul Ray Smith Simulation & Training Technology Center**  
**TECHNOLOGY DRIVEN. WARFIGHTER FOCUSED.**  
 PUBLIC RELEASE – DISTRIBUTION UNLIMITED

132

## Demo of GIFT Tools



**SFC Paul Ray Smith Simulation & Training Technology Center**  
**TECHNOLOGY DRIVEN. WARFIGHTER FOCUSED.**  
 PUBLIC RELEASE – DISTRIBUTION UNLIMITED

133



**Thank you for your attention!**

**Questions?**





---

## Bibliography

---

- Anderson JR, Corbett AT, Koedinger KR, Pelletier R. Cognitive tutors: lessons learned. *The Journal of the Learning Sciences*. 1995;4:167–207.
- Anderson LW, Krathwohl DR. A taxonomy for learning, teaching and assessing: a revision of bloom’s taxonomy of educational objectives: complete edition. New York (NY): Longman; 2001.
- Army Training and Doctrine Command (US). The United States Army learning concept for 2015. Fort Monroe (VA): Army Training and Doctrine Command (US); 2011.
- Baker RSJd, Gowda SM, Wixon M, Kalka J, Wagner AZ, Salvi A, Aleven V, Kusbit G, Ocumpaugh J, Rossi L. Sensor-free automated detection of affect in a cognitive tutor for algebra. In: *Proceedings of the 5<sup>th</sup> International Conference on Educational Data Mining*; 2012 Jun 19–21; Chania, Greece; p.126–133.
- Bloom BS. The 2 sigma problem: the search for methods of group instruction as effective as one-to-one tutoring. *Educational Researcher*. 1984;13(6):6.
- Brawner KW. Modeling learner mood in realtime through biosensors for intelligent tutoring improvements. [doctoral dissertation]. [Orlando (FL)]: University of Central Florida; 2013.
- Brawner K, Goldberg B. Realtime monitoring of ECG and GSR signals during computer-based training. In: *Proceedings of the Intelligent Tutoring Systems (ITS) Conference*; 2012; Chania, Crete, Greece.
- Brawner K, Holden H, Goldberg B, Sottolare R. Recommendations for modern tools to author tutoring systems. In: *Proceedings of the Interservice/Industry Training Systems & Education Conference*; 2012 Dec; Orlando, FL.
- Carroll M, Kokini C, Champney R, Fuchs S, Sottolare R, Goldberg B. Assessing trainee states in intelligent tutoring systems: using low cost sensors for affective and cognitive state modeling. *Interservice/Industry Training Systems & Education Conference*; 2011 Dec; Orlando, FL.
- Cohen J. Quantitative methods in psychology: a power primer. *Psychological Bulletin*. American Psychological Association, Inc. 1992;112(1):155–159.
- Cohen PA, Kulik JA, Kulik CLC. Educational outcomes of tutoring: a meta-analysis of findings. *American Educational Research Journal*. 1982;19:237–248.
- Dillon TJ. Questioning and teaching: a manual of practice. New York (NY): Teachers College Press; 1988.

- Fletcher JD, Sottolare R. Shared mental models and intelligent tutoring for teams. In: Sottolare R, Hu X, Graesser A, Holden H, editors. Design recommendations for intelligent tutoring systems: learner modeling, volume I. Adelphi (MD): Army Research Laboratory (US); 2013.
- Goldberg B. Explicit feedback within game-based training: examining the influence of source modality effects on interaction. [doctoral dissertation]. [Orlando (FL)]: University of Central Florida; 2013.
- Goldberg B, Brawner K. Efficacy of measuring engagement during computer-based training with low-cost electroencephalogram (EEG) sensor outputs. Proceedings of Human Factors and Ergonomics Society Annual Meeting (HFES2012); 2012; Boston, MA.
- Goldberg B, Brawner KW, Sottolare R, Tarr R, Billings DR, Malone N. Use of evidence-based strategies to enhance the extensibility of adaptive tutoring technologies. Paper presented at the Interservice/Industry Training, Simulation, and Education Conference; I/ITSEC. 2012; Orlando, FL.
- Goleman D. Emotional intelligence. New York (NY): Bantam Books; 1995.
- Graesser AC, D'Mello S. Emotions during the learning of difficult material. In: Ross BH, editor. Psychology of learning and motivation. New York (NY): Academic Press; 2012. Volume 57; Chapter 5; p. 183–225. ISSN 0079-7421, ISBN 978012-3942937, 10.1016/B978-0-12-394293-7.00005-4.
- Graesser AC, McNamara DS. Self-regulated learning in learning environments with pedagogical agents that interact in natural language. Educational Psychologist. 2010;45:234–244.
- Graesser AC, Person NK. Question asking during tutoring. American Educational Research Journal. 1994;31:104–137.
- Hanks S, Pollack ME, Cohen PR. Benchmarks, test beds, controlled experimentation, and the design of agent architectures. AI Magazine. 1993;14 (4).
- Holden H. Understanding the interaction behavior of pedagogical agents' emotional support and competency on learner outcomes and agent perceptions. In: Proceedings of the Intelligent Tutoring Systems (ITS) 2012 Conference; 2012; Chania, Crete, Greece.
- Holden H, Goldberg B. Student expectations and tutor acceptance: the impact on student affect (mood) and future usage intentions. international defense & homeland security simulation workshop. In: Proceedings of the I3M Conference. 2011 Sep; Rome, Italy.
- Holden H, Sottolare R, Goldberg B, Brawner K. Effective learner modeling for computer-based tutoring of cognitive and affective tasks. In: Proceedings of the Interservice/Industry Training Systems & Education Conference; 2012 Dec; Orlando, FL.

- Honey MA, Hilton M, editors. Learning science through computer games and simulations. Washington (DC): National Academies Press; 2011.
- Hunt E, Minstrell J. A cognitive approach to the teaching of physics. In: McGilly K, editor. Classroom Lessons. Cambridge (MA): MIT Press; 1994. p. 51–74.
- Kim Y. Desirable characteristics of learning companions. *International Journal of Artificial Intelligence in Education*. 2007;17(04):371–388.
- Kim Y, Baylor AL, Shen E. PALS Group. Pedagogical agents as learning companions: the impact of agent affect and gender. *Journal of Computer-Assisted Learning*. 2007;23(03):220–234.
- Kim Y, Xu B, Sharif A. Pedagogical agents rendering social context to an online learning environment MathGirls. *International Transactions on Systems Science and Applications*. 2008;4(2):99–106.
- Kokini C, Carroll M, Ramirez-Padron WX, Hale K, Sottolare R, Goldberg B. Quantification of trainee affective and cognitive state in real-time. In: *Proceedings of Interservice/Industry Training, Simulation, and Education Conference (I/ITSEC2012)*. 2012; Orlando, FL.
- Krathwohl DR, Bloom BS, Masia BB. *Taxonomy of educational objectives: handbook II: affective domain*. New York (NY): David McKay Co.; 1964.
- Lepper MR, Drake M, O'Donnell-Johnson TM. Scaffolding techniques of expert human tutors. In: Hogan K, Pressley M, editors. *Scaffolding student learning: instructional approaches and issues*. New York (NY): Brookline Books; 1997. p. 108–144.
- Lepper M, Woolverton M. The wisdom of practice: lessons learned from the study of highly effective tutors. In: Aronson J, editor. *Improving academic achievement: impact of psychological factors on education*. New York (NY): Academic Press; 2002. p. 135–158.
- Lesgold AM, Lajoie S, Bunzo M, Eggan G. *Sherlock: a coached practice environment for an electronics trouble shooting job*. Pittsburgh (PA): University of Pittsburgh, Learning Research and Development Center; 1988.
- Mehrabian A. Pleasure-arousal-dominance: a general framework for describing and measuring individual differences in temperament. *Current Psychology*. 1996;14:261–292.
- Merrill D, Reiser B, Ranney M, Trafton J. Effective tutoring techniques: a comparison of human tutors and intelligent tutoring systems. *The Journal of the Learning Sciences*. 1992;2(3):277–305.

- Murray T. Authoring intelligent tutoring systems: an analysis of the state of the art. *International Journal of Artificial Intelligence in Education*. 1999;10(1):98–129.
- Murray T. An overview of intelligent tutoring system authoring tools: updated analysis of the state of the art. In: Murray T, Blessing S, Ainsworth S, editors. *Authoring tools for advanced technology learning environments*. Dordrecht (The Netherlands): Kluwer Academic Publishers; 2003. p. 491–545.
- Ocuppaugh J, Baker RSJd, Rodrigo MMT. Baker-Rodrigo observation method protocol (BROMP) 1.0. Training Manual Ver. 1.0. New York (NY): EdLab, Teachers College, Columbia University; 2012.
- Person NK, Graesser AC. The Tutoring Research Group. Fourteen facts about human tutoring: food for thought for ITS developers. *AI-ED 2003 Workshop Proceedings on Tutorial Dialogue Systems: With a View Toward the Classroom*; 2003; Sydney, Australia. p. 335–344.
- Person NK, Kreuz RJ, Zwaan RA, Graesser AC. Pragmatics and pedagogy: conversational rules and politeness strategies may inhibit effective tutoring. *Cognition and Instruction*. 1995;13(2):161–188.
- Rose CP, Jordan PW, Ringenberg M, Siler S, Vanlehn K, Weinstein A. Interactive conceptual tutoring in Atlas-Andes. In: Moore JD, Redfield C, Johnson WL, editors. *Artificial intelligence in education: AI-Ed in the wired and wireless future*. Washington (DC): IOS; 2001. p. 256–266.
- Simpson E. The classification of educational objectives in the psychomotor domain: the psychomotor domain. Vol. 3. Washington (DC): Gryphon House; 1972.
- Soller A. Supporting social interaction in an intelligent collaborative learning system. *International Journal of Artificial Intelligence in Education*. 2001;12(1):40–62.
- Sottolare R. Considerations in the development of an ontology for a generalized intelligent framework for tutoring. *International defense & homeland security simulation workshop*. In: *Proceedings of the I3M Conference*; 2012 Sep; Vienna, Austria.
- Sottolare R. Characterizing an adaptive tutoring learning effect chain for individual and team tutoring. In: *Proceedings of the Interservice/Industry Training Systems & Education Conference*; 2013 Dec; Orlando, FL.
- Sottolare R. Future concepts for learner modeling. In: Sottolare R, Hu X, Graesser A, Holden H, editors. *Design recommendations for intelligent tutoring systems: learner modeling, volume I*. Army Research Laboratory (US); 2013.

- Sottilare R, Gilbert S. Considerations for tutoring, cognitive modeling, authoring and interaction design in serious games. Authoring Simulation and Game-Based Intelligent Tutoring workshop at the Artificial Intelligence in Education Conference (AIED); 2011 Jun; Auckland, New Zealand.
- Sottilare R, Goldberg B. Designing adaptive computer-based tutors to accelerate learning and facilitate retention. *Journal of Cognitive Technology: Contributions of Cognitive Technology to Accelerated Learning and Expertise*. 2012;17(1):19–34.
- Sottilare R, Goldberg S. Research gaps for adaptive computer-based tutoring systems. In: Best C, Galanis G, Kerry J, Sottilare R, editors. *Fundamental issues in defence simulation & training*. London (UK): Ashgate Publishing; 2013.
- Sottilare R, Goldberg B, Brawner K, Holden H. A modular framework to support the authoring and assessment of adaptive computer-based tutoring systems (CBTS). In: *Proceedings of the Interservice/Industry Training Systems & Education Conference*; 2012 Dec; Orlando, FL.
- Sottilare R, Holden H, Brawner K, Goldberg B. Challenges and emerging concepts in the development of adaptive, computer-based tutoring systems for team training. In: *Proceedings of the Interservice/Industry Training Simulation & Education Conference*; 2011 Dec; Orlando, FL.
- Sottilare R, Holden H, Goldberg B, Brawner K. The generalized intelligent framework for tutoring (GIFT). In: Best C, Galanis G, Kerry J, Sottilare R, editors. *Fundamental issues in defence simulation & training*. London (UK): Ashgate Publishing; 2013.
- Sottilare R, Proctor M. Passively classifying student mood and performance within intelligent tutoring systems (ITS). *Educational Technology Journal & Society*. 2012;15(2):101–114.
- VanLehn K. The relative effectiveness of human tutoring, intelligent tutoring systems, and other tutoring systems. *Educational Psychologist*. 2011;46(4):197–221.
- VanLehn K, Lynch C, Schulze K, Shapiro JA, Shelby R, Taylor L, et al. The Andes physics tutoring system: lessons learned. *International Journal of Artificial Intelligence and Education*. 2005;15(3):147–204.
- Vygotsky LS. *Mind in society: the development of higher psychology processes*. Cambridge (MA): Harvard University Press; 1978.
- Woolf BP. *A roadmap for education technology*. Arlington (VA): National Science Foundation; 2010. Report No.: 0637190.

1 DEFENSE TECHNICAL  
(PDF) INFORMATION CTR  
DTIC OCA

2 DIRECTOR  
(PDF) US ARMY RESEARCH LAB  
RDRL CIO LL  
IMAL HRA MAIL & RECORDS MGMT

1 GOVT PRINTG OFC  
(PDF) A MALHOTRA

1 ARMY RSCH LABORATORY – HRED  
(PDF) RDRL HRM D  
T DAVIS  
BLDG 5400 RM C242  
REDSTONE ARSENAL AL 35898-7290

1 ARMY RSCH LABORATORY – HRED  
(PDF) RDRL HRS EA DR V J RICE  
BLDG 4011 RM 217  
1750 GREELEY RD  
FORT SAM HOUSTON TX 78234-5002

1 ARMY RSCH LABORATORY – HRED  
(PDF) RDRL HRM DG J RUBINSTEIN  
BLDG 333  
PICATINNY ARSENAL NJ 07806-5000

1 ARMY RSCH LABORATORY – HRED  
(PDF) ARMC FIELD ELEMENT  
RDRL HRM CH C BURNS  
THIRD AVE BLDG 1467B RM 336  
FORT KNOX KY 40121

1 ARMY RSCH LABORATORY – HRED  
(PDF) AWC FIELD ELEMENT  
RDRL HRM DJ D DURBIN  
BLDG 4506 (DCD) RM 107  
FORT RUCKER AL 36362-5000

1 ARMY RSCH LABORATORY – HRED  
(PDF) RDRL HRM CK J REINHART  
10125 KINGMAN RD BLDG 317  
FORT BELVOIR VA 22060-5828

1 ARMY RSCH LABORATORY – HRED  
(PDF) RDRL HRM AY M BARNES  
2520 HEALY AVE  
STE 1172 BLDG 51005  
FORT HUACHUCA AZ 85613-7069

1 ARMY RSCH LABORATORY – HRED  
(PDF) RDRL HRM AP D UNGVARSKY  
POPE HALL BLDG 470  
BCBL 806 HARRISON DR  
FORT LEAVENWORTH KS 66027-2302

1 ARMY RSCH LABORATORY – HRED  
(PDF) RDRL HRM AT J CHEN  
12423 RESEARCH PKWY  
ORLANDO FL 32826-3276

1 ARMY RSCH LABORATORY – HRED  
(PDF) RDRL HRM AT C KORTENHAUS  
12350 RESEARCH PKWY  
ORLANDO FL 32826-3276

1 ARMY RSCH LABORATORY – HRED  
(PDF) RDRL HRM CU B LUTAS-SPENCER  
6501 E 11 MILE RD MS 284  
BLDG 200A 2ND FL RM 2104  
WARREN MI 48397-5000

1 ARMY RSCH LABORATORY – HRED  
(PDF) FIRES CTR OF EXCELLENCE  
FIELD ELEMENT  
RDRL HRM AF C HERNANDEZ  
3040 NW AUSTIN RD RM 221  
FORT SILL OK 73503-9043

1 ARMY RSCH LABORATORY – HRED  
(PDF) RDRL HRM AV W CULBERTSON  
91012 STATION AVE  
FORT HOOD TX 76544-5073

1 ARMY RSCH LABORATORY – HRED  
(PDF) RDRL HRM DE A MARES  
1733 PLEASANTON RD BOX 3  
FORT BLISS TX 79916-6816

8 ARMY RSCH LABORATORY – HRED  
(PDF) SIMULATION & TRAINING  
TECHNOLOGY CENTER  
RDRL HRT COL G LAASE  
RDRL HRT I MARTINEZ  
RDRL HRT T R SOTTILARE  
RDRL HRT B N FINKELSTEIN  
RDRL HRT G A RODRIGUEZ  
RDRL HRT I J HART  
RDRL HRT M C METEVIER  
RDRL HRT S B PETTIT  
12423 RESEARCH PARKWAY  
ORLANDO FL 32826

1 ARMY RSCH LABORATORY – HRED  
(PDF) HQ USASOC  
RDRL HRM CN R SPENCER  
BLDG E2929 DESERT STORM DRIVE  
FORT BRAGG NC 28310

1 ARMY G1  
(PDF) DAPE MR B KNAPP  
300 ARMY PENTAGON RM 2C489  
WASHINGTON DC 20310-0300

ABERDEEN PROVING GROUND

12 DIR USARL  
(PDF) RDRL HR  
L ALLENDER  
P FRANASZCZUK  
RDRL HRM  
P SAVAGE-KNEPSHIELD  
RDRL HRM AL  
C PAULILLO  
RDRL HRM B  
J GRYNOVICKI  
RDRL HRM C  
L GARRETT  
RDRL HRS  
J LOCKETT  
RDRL HRS B  
M LAFIANDRA  
RDRL HRS C  
K MCDOWELL  
RDRL HRS D  
A SCHARINE  
RDRL HRS E  
D HEADLEY  
RDRL HRT T  
R SOTTILARE

INTENTIONALLY LEFT BLANK.