

FILE COPY

DO NOT REMOVE

NBSIR 77-1231

Measurement of Transistor Collector-Emitter Saturation Voltage

RECEIVED
DATE 6/13/77
CTP

K. O. Leedy

Electronic Technology Division
Institute for Applied Technology
National Bureau of Standards
Washington, D.C. 20234

June 1977

Final

Prepared for
Defense Nuclear Agency
Washington, D.C. 20305

NBSIR 77-1231

MEASUREMENT OF TRANSISTOR COLLECTOR-EMITTER SATURATION VOLTAGE

K. O. Leedy

Electronic Technology Division
Institute for Applied Technology
National Bureau of Standards
Washington, D.C. 20234

June 1977

Final

Prepared for
Defense Nuclear Agency
Washington, D.C. 20305



U.S. DEPARTMENT OF COMMERCE, Juanita M. Kreps, *Secretary*

Dr. Sidney Harman, *Under Secretary*

Jordan J. Baruch, *Assistant Secretary for Science and Technology*

NATIONAL BUREAU OF STANDARDS, Ernest Ambler, *Acting Director*

TABLE OF CONTENTS

	Page
Abstract	1
Introduction	1
Definition of Saturation	3
Measurement Method	4
Temperature Effects	5
Current Effects	10
Other Important Parameters	22
Summary	27
Acknowledgment	28
References	28
Appendix	29
Distribution	43

LIST OF FIGURES

	Page
1. Illustration of the three transistor operating regions: cut-off, active, and saturation	2
2a. Collector-emitter voltage as a function of temperature for each of the three 2N2222 transistors	6
2b. Collector-emitter voltage as a function of temperature for each of the three 2N3055 transistors	7
2c. Collector-emitter voltage as a function of temperature for each of the three 2N5840 transistors	8
3. Typical change in collector-emitter voltage as a function of temperature for the three device types with the data averaged for the three samples of each type	9
4a. Collector-emitter voltage as a function of duty cycle for each of the three 2N5840 transistors	11

List of Figures (continued)

	Page
4b. Typical change in collector-emitter voltage as a function of duty cycle averaged for the three 2N5840 transistors	12
5a. Collector-emitter voltage as a function of collector current with a fixed base current of 15 mA for each of the three 2N2222 transistors	14
5b. Collector-emitter voltage as a function of collector current with a fixed base current of 400 mA for each of the three 2N3055 transistors	15
5c. Collector-emitter voltage as a function of collector current with a fixed base current of 200 mA for each of the three 2N5840 transistors	16
6. Typical change in collector-emitter voltage as a function of change in collector current	17
7a. Collector-emitter voltage as a function of base current with a fixed collector current of 150 mA for each of the three 2N2222 transistors	18
7b. Collector-emitter voltage as a function of base current with a fixed collector current of 4 A for each of the three 2N3055 transistors	19
7c. Collector-emitter voltage as a function of base current with a fixed collector current of 2 A for each of the three 2N5840 transistors	20
8. Typical change in collector-emitter voltage as a function of change in base current	21
9a. Collector-emitter voltage as a function of collector current for different values of forced β for a 2N2222 transistor . . .	23
9b. Collector-emitter voltage as a function of collector current for different values of forced β for a 2N3055 transistor . . .	24
9c. Collector-emitter voltage as a function of collector current for different values of forced β for a 2N5840 transistor . . .	25
10. Illustration of Kelvin connections	26

Measurement of Transistor Collector-Emitter Saturation Voltage

K. O. Leedy
Institute for Applied Technology
National Bureau of Standards
Washington, D. C. 20234

ABSTRACT

This report presents a detailed method for the measurement of collector-emitter saturation voltage. The method which is included in the Appendix is proposed for standardization. The report also contains a description of the laboratory confirmation of the method and a discussion of the precautions to be taken to assure repeatability of the measurement. Emphasized is the necessity to determine that the conditions for saturation are met during the measurement.

INTRODUCTION

There are three regions of transistor operation: cut-off, active, and saturation. These are illustrated in figure 1 which shows curves of collector current versus collector-emitter voltage for different values of base current. For transistors used in switching applications the cut-off and saturation regions are most important. In saturation, or in the "on" state, an ideal transistor switch should have a very low resistance, approaching that of a short circuit so that the voltage drop across the collector-emitter terminals approaches zero. This voltage drop is called the collector-emitter saturation voltage and is usually represented in specification literature by the symbol $V_{CE(SAT)}$.

The saturation voltage is an important parameter because it can be used to predict the performance of a transistor used in switching apparatus such as in d-c to a-c power inverters, chopping circuits, or logic circuits. It represents the "zero" logic level in many types of digital circuits. It is important to know how low the collector-emitter voltage becomes in saturation because during saturation the transistor passes the most current for the longest periods of time, and power dissipation at the collector can become excessive. When a system design is to be used in a radiation environment, it is important to know the change in saturation voltage as a result of radiation dose so that the design can accommodate the changed value.

In the application of a transistor in circuit, it is not always necessary to know the actual $V_{CE(SAT)}$, that is, the collector-emitter voltage of a transistor operating in the saturation region. Instead, it is important to know that for the bias conditions of interest, the collector-emitter voltage is less than a specified value. The circuit designer would have assumed this value, probably from knowledge of

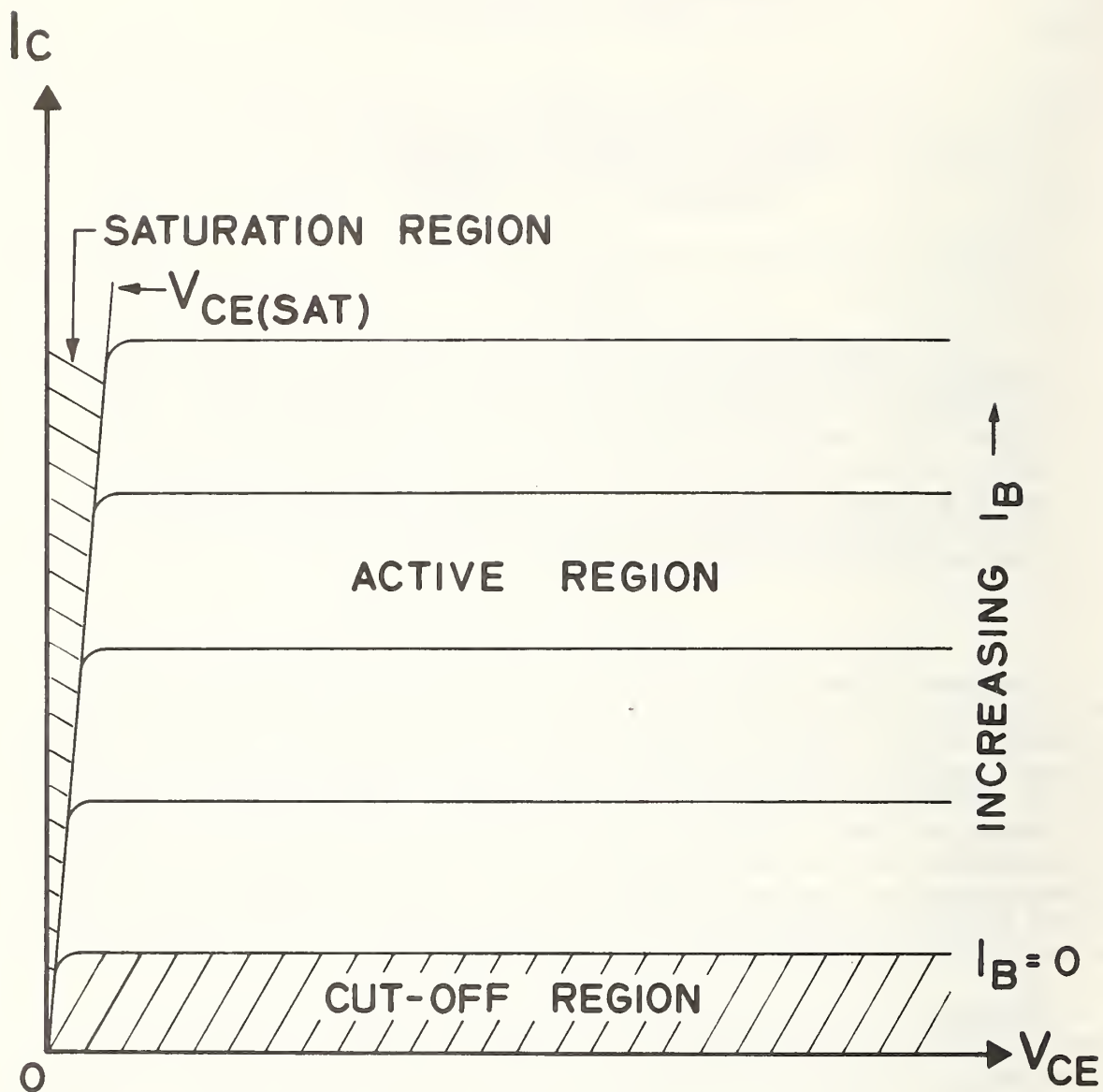


Figure 1. Illustration of the three transistor operating regions: cut-off, active, and saturation.

$V_{CE(SAT)}$ for that transistor type. The measurement method attached can be used to determine if a particular transistor will meet the requirement if the test for saturation is omitted.

From the diagram in figure 1, it is apparent that saturation is a region and that $V_{CE(SAT)}$ is not a single point but rather a line. Its value depends on the collector current and base current among other variables. The purpose of the measurement presented here is to adequately define all variables so that a repeatable measurement of $V_{CE(SAT)}$ is possible. The method itself is given in the Appendix. It can be used for any $V_{CE(SAT)}$ measurement but it is most useful when a measurement of a change in $V_{CE(SAT)}$ is required. Normally, when $V_{CE(SAT)}$ is measured, it is for the purpose of assuring that it be less than a maximum voltage in a specification. This implies that better devices have lower values of $V_{CE(SAT)}$. Therefore, it is to the advantage of the manufacturer to report a low value. To perform his measurement, he then need only control his parameters to the extent that he obtains a measured value of $V_{CE(SAT)}$ low enough to meet the specification. To measure a change in $V_{CE(SAT)}$, however, it is necessary to make the measurement twice with all important independent variables specified and carefully controlled.

DEFINITION OF SATURATION

By definition,¹ a transistor is operating in the saturation region when both the emitter-base and the collector-base junctions are forward-biased. The collector-emitter voltage in this condition has two components: the junction saturation voltage, defined below, and the voltages due to the collector saturation current in the collector series resistance and due to the emitter current in the emitter series resistance. The base series resistance can be neglected.

The junction saturation voltage is the difference between the forward-biased junction voltages of the collector-base and the emitter-base junctions. It is given by the Ebers and Moll² expression as:

$$\Delta V_j = \frac{kT}{q} \ln \frac{\alpha_I \left[1 - \frac{I_C}{I_B} \frac{1 - \alpha_N}{\alpha_N} \right]}{1 + \frac{I_C}{I_B} (1 - \alpha_I)}$$

where

ΔV_j = junction saturation voltage, V

T = absolute temperature, K

α_N = common base large signal d-c current gain with the emitter functioning as an emitter and the collector functioning as a collector

α_I = common base large signal d-c current gain with the emitter functioning as a collector and the collector functioning as an emitter

I_C = collector current, A

I_B = base current, A

k = Boltzman's constant (1.381×10^{-23} J/K)

q = charge on electron (1.602×10^{-19} C).

The saturation voltage is then given by

$$V_{CE(SAT)} = \Delta V_j + I_C r_C + I_E r_E$$

where

r_C = collector series resistance, Ω

r_E = emitter series resistance, Ω .

The junction saturation voltage is normally small and rather insensitive to variations in collector or base current because of the logarithmic relation. Of more significance, particularly for power transistors, is the saturation voltage due to the resistive component. The collector region of many power transistors is lightly doped to obtain high breakdown voltages and the transistor is usually operated at high currents in saturation. Under conditions which affect $V_{CE(SAT)}$, such as an increase in temperature or an exposure to radiation, the effect on the collector resistance can produce a major change in $V_{CE(SAT)}$, as can the effects of variations in transistor gain.

MEASUREMENT METHOD

The method for measuring $V_{CE(SAT)}$ as outlined in the Appendix requires that the following measurement conditions be specified:

- 1) I_C - the collector current
- 2) I_B - the base current
- 3) ambient temperature
- 4) selection of a pulsed or d-c method, and
- 5) the pulse width and duty cycle (if other than 300 μ s and 2%, respectively).

This information must be included in the specification for $V_{CE(SAT)}$ for the particular device to be tested, such as in the detailed specifi-

cation in the appropriate military standard, if the specification is to be meaningful. The method instructs the user how to determine all circuit values. It describes all necessary apparatus, procedural steps to be performed, data to be taken, and cautions to be observed.

Using this method, several experiments were performed to determine the sensitivity of the measured $V_{CE}(SAT)$ to several variables. Three transistor types were chosen for these experiments: a small-signal transistor (2N2222), a single-diffused power transistor (2N3055), and a triple-diffused power transistor (2N5840). These devices are found in military systems and each is available in a military version. These device types were selected to provide a wide variation in measured results for variations in the measurement parameters. Three devices of each type were used for each experiment. All were off-the-shelf commercial transistors. Though the number of devices used is small, the data indicate the trends in the effects of the variables and, as such, indicate which parameters are necessary to control carefully and which are not.

TEMPERATURE EFFECTS

The value of $V_{CE}(SAT)$ is dependent on temperature in at least two ways: first, temperature appears in the expression for the junction saturation voltage, and second, the collector series resistance is a function of temperature. The method specifies that the measurement be made at a nominal temperature of 20°C and that the power levels used do not give rise to significant heating of the junction. To investigate the effects of elevated temperature on the value of $V_{CE}(SAT)$, the following experiments were performed.

To simulate a rise in the ambient temperature, the transistors were placed in a heated oil bath whose temperature was controlled at approximately 10°C intervals from room temperature to 100°C during measurement of $V_{CE}(SAT)$. Sufficient time was allowed for the transistor to reach a steady-state temperature between measurements.

Figure 2 shows the measured value of $V_{CE}(SAT)$ versus temperature for the three transistor types studied. In each case the base current was pulsed with a 2% duty cycle and a pulse width of 300 μs . Both the 2N2222, figure 2a, and 2N3055, figure 2b, show a small increase in $V_{CE}(SAT)$ with temperature while the 2N5840, figure 2c, shows a much greater increase. It is to be expected that the 2N5840 would be much more sensitive to temperature since it is designed to have a very high breakdown voltage. In order to have a high breakdown voltage, the collector region has a very low doping level which provides a high collector series resistance with a high temperature coefficient. To compare the performance of the three transistor types, the data in figure 2 was plotted in figure 3 as percentage change in $V_{CE}(SAT)$ from its value at room temperature as a function of temperature. In this case the percent change in $V_{CE}(SAT)$ is

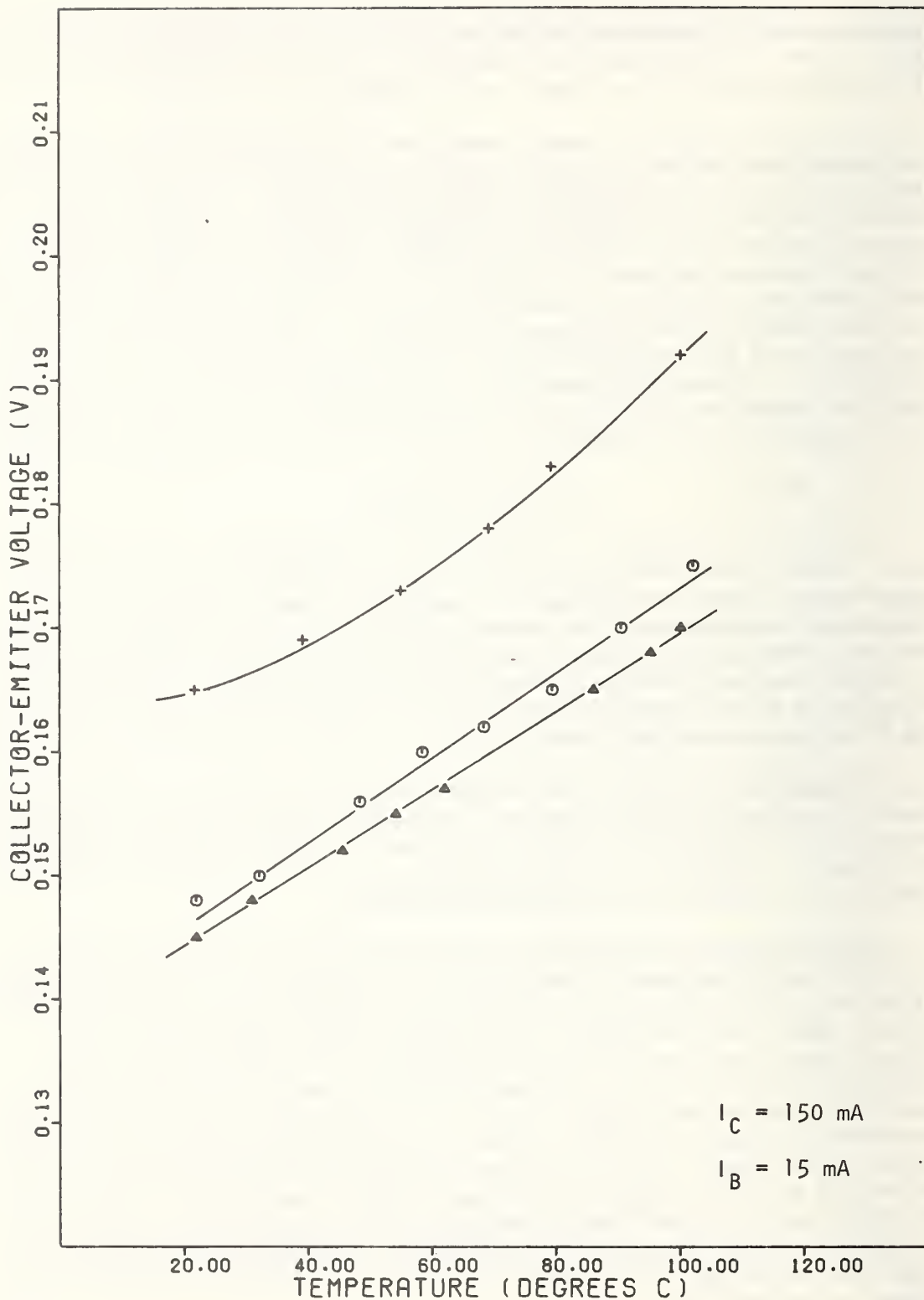


Figure 2a. Collector-emitter voltage as a function of temperature for each of the three 2N2222 transistors.

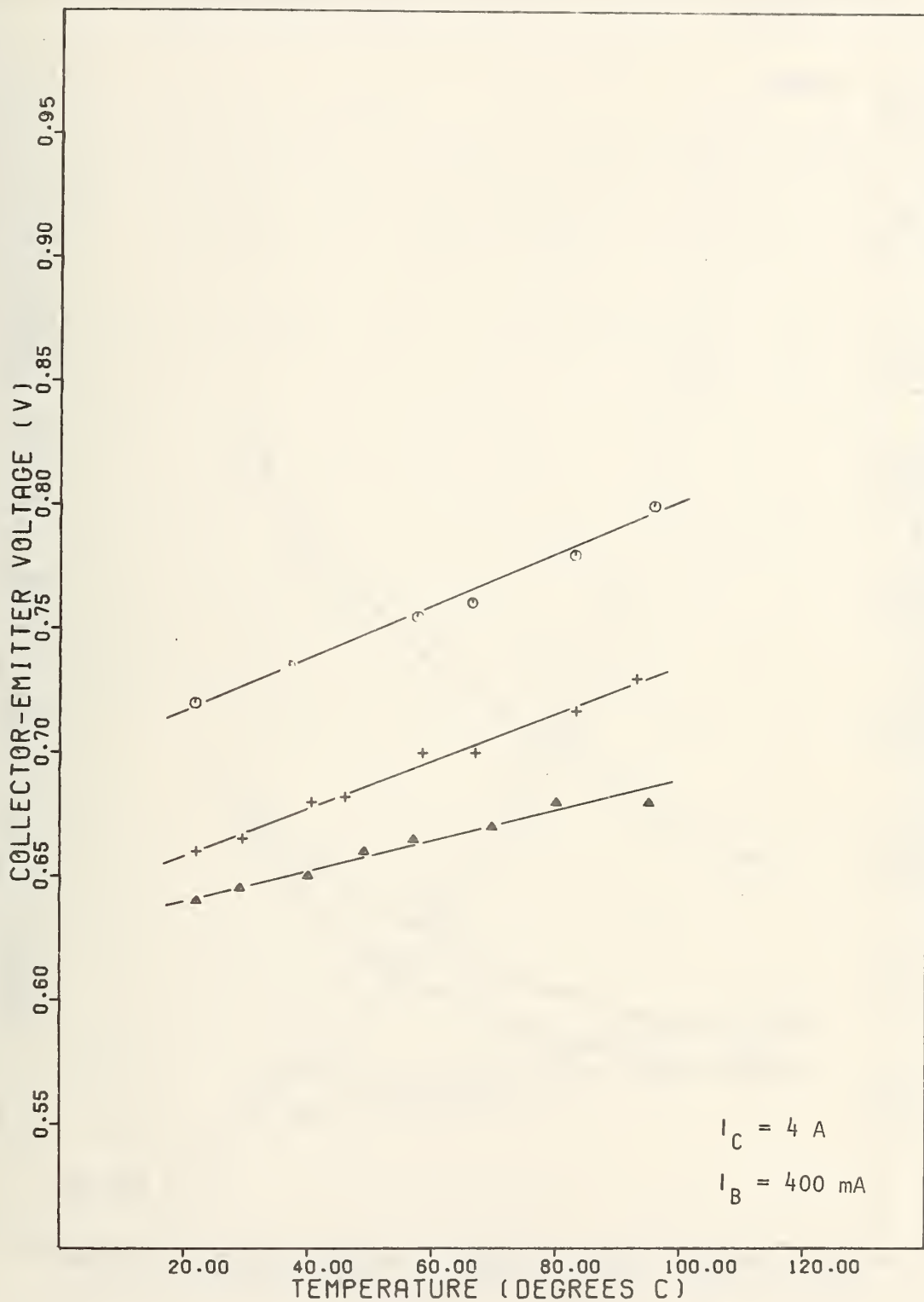


Figure 2b. Collector-emitter voltage as a function of temperature for each of the three 2N3055 transistors.

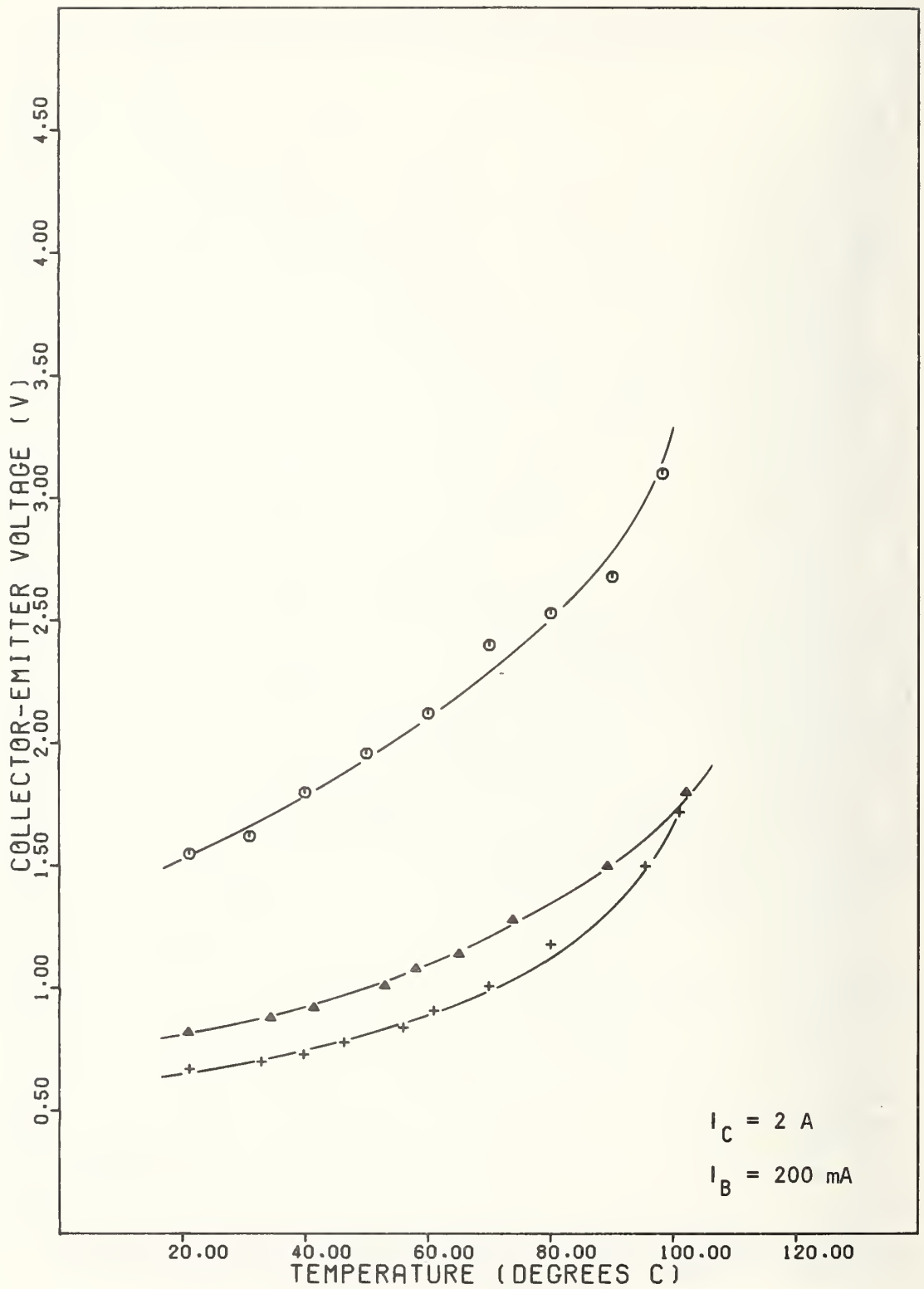


Figure 2c. Collector-emitter voltage as a function of temperature for each of the three 2N5840 transistors.

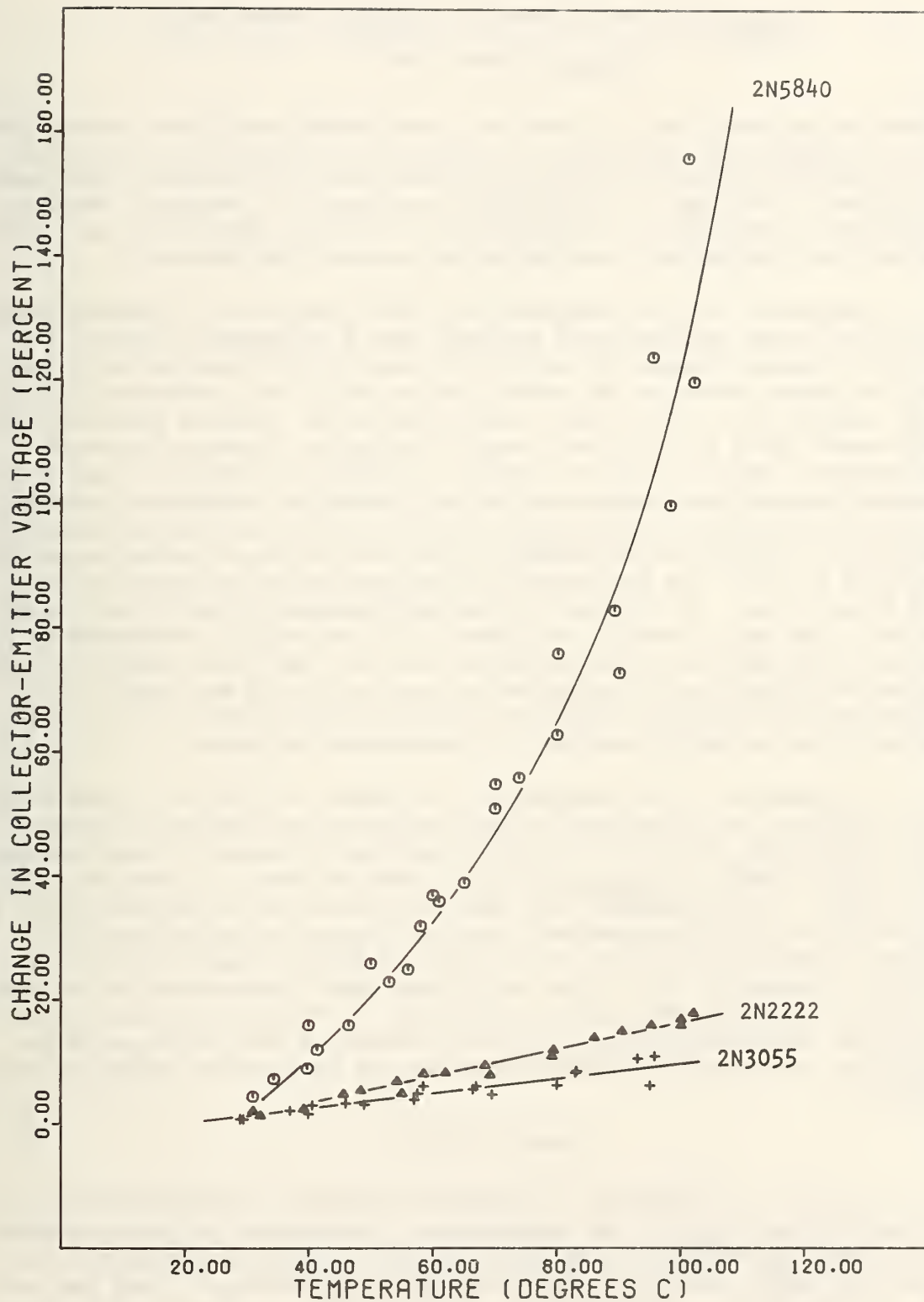


Figure 3. Typical change in collector-emitter voltage as a function of temperature for the three device types with the data averaged for the three samples of each type.

$$\frac{V_{CE(SAT)} \text{ (Elevated Temp.)} - V_{CE(SAT)} \text{ (Room Temp.)}}{V_{CE(SAT)} \text{ (Room Temp.)}}$$

These curves show that for practical measurement conditions, normal laboratory temperature conditions are adequate as deviations of less than 10°C result in changes in $V_{CE(SAT)}$ of less than 5%. However, with some transistor types when a very precise measurement is required, ambient temperature changes can be significant. For this reason, the method requires that the ambient temperature be measured and recorded.

Examination of the manufacturer's specified value of thermal resistance for these devices would indicate that a temperature rise of two or three degrees Celsius at most would result from junction heating at the low power levels of the saturation region if the transistor is properly mounted with a heat-sink. According to the previous measurements, this would yield very little change in $V_{CE(SAT)}$. However, since the measurement could be made in a condition where the transistor was not properly mounted on a heat-sink, it was decided to determine the effect of junction heating. Also examined was the effect on the measurement of $V_{CE(SAT)}$ of errors in the setting of the duty cycle, from the normal value of 2% to 25%. The duty cycle is the fraction of the cycle in which the pulse is on. It is given by the pulse width divided by the period of the cycle and is usually expressed as a percentage. Since the duty cycle is dependent on both the pulse width and the pulse repetition rate, errors in either can be expressed as an error in the duty cycle. The measurement of $V_{CE(SAT)}$ versus duty cycle was made only on the 2N5840 since it was the most sensitive to temperature variation.

The results of the measurements are shown in figure 4. Figure 4a shows $V_{CE(SAT)}$ as a function of duty cycle with a fixed pulse width of 300 μ s for each of the three devices measured. Figure 4b shows average percentage change in $V_{CE(SAT)}$ for the three devices as a function of duty cycle. It is apparent that the duty cycle can be increased from 2 to 20 percent with the measured value of $V_{CE(SAT)}$ changing only by 5%. Errors in setting the duty cycle or pulse width for small deviations from the nominal 2% duty cycle and 300- μ s pulse width would not be significant. However, the method allows that other values be used if required by the specification. If other values of duty cycle and pulse width are to be used, the possible effect of temperature should be considered.

CURRENT EFFECTS

The effect of both the base and the collector currents on the measured value of $V_{CE(SAT)}$ was investigated. Variations in these currents affect the measurement in two ways. First, a change in collector current will alter the I_{CR} term of the saturation voltage. This can produce a change in the measured value of $V_{CE(SAT)}$ approximately proportional to the change in collector current. Second, changing either current can cause the transistor to operate in the active region instead of the saturation region. This will increase the measured value of V_{CE} by sev-

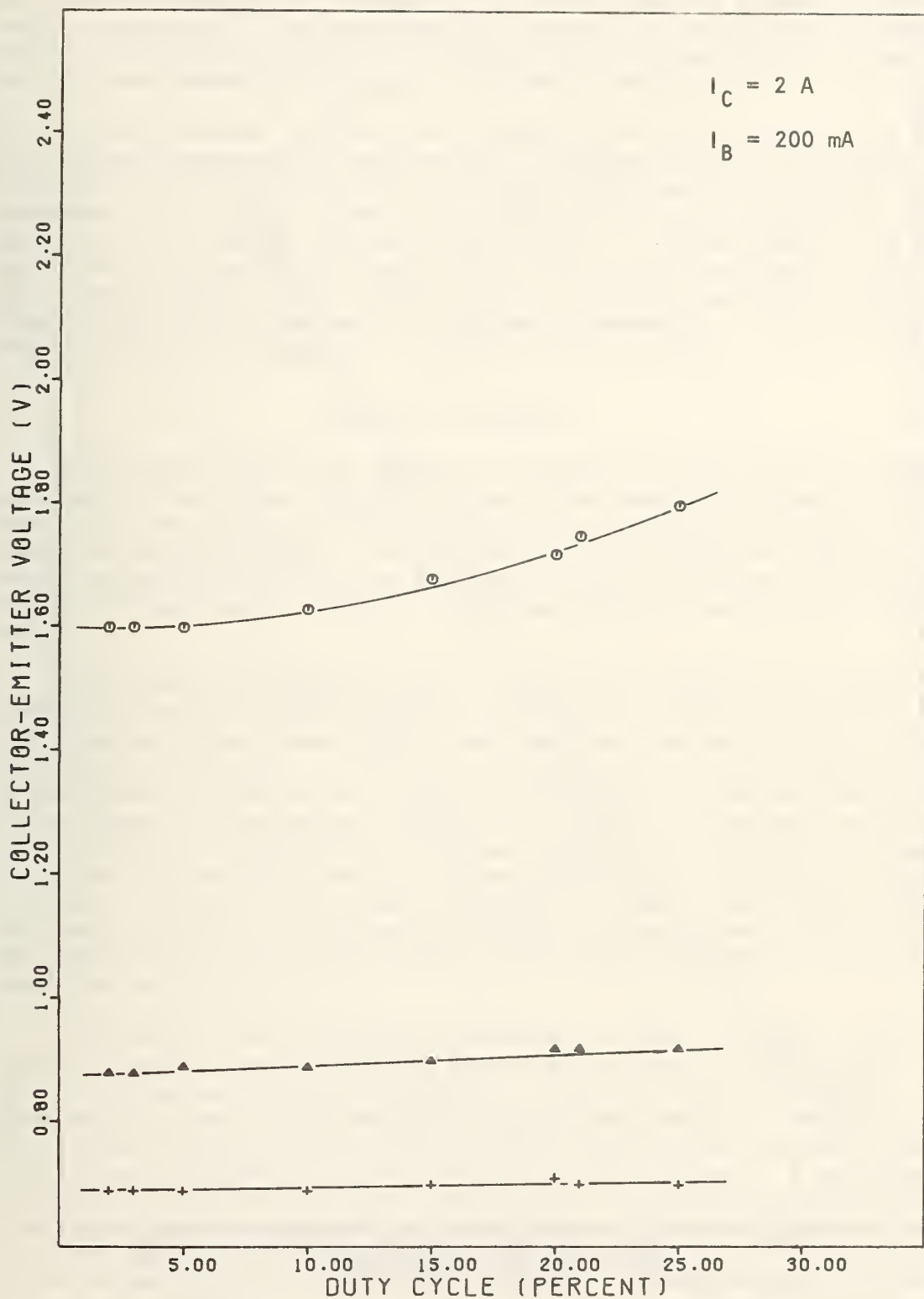


Figure 4a. Collector-emitter voltage as a function of duty cycle for each of the three 2N5840 transistors.

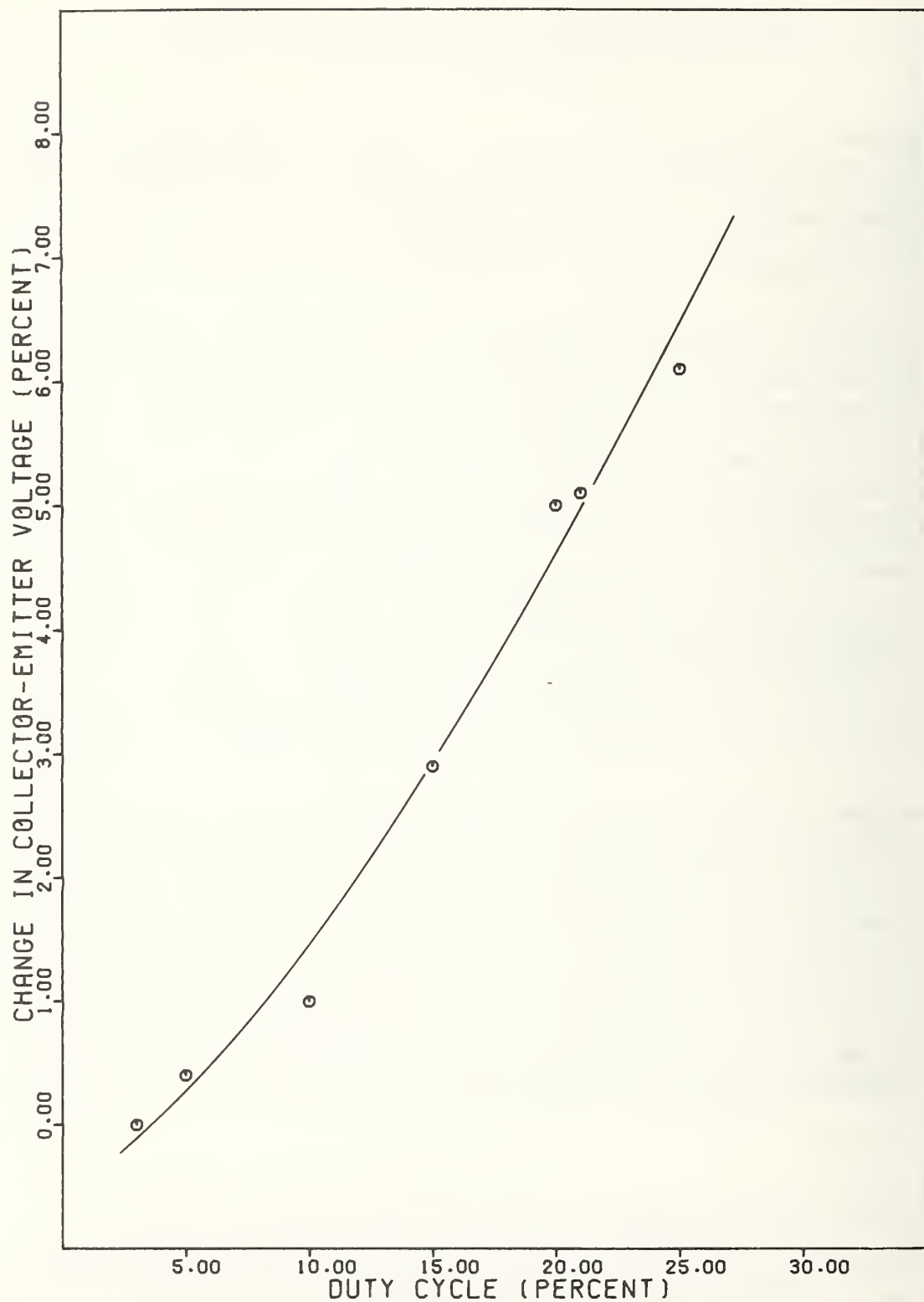


Figure 4b. Typical change in collector-emitter voltage as a function of duty cycle averaged for the three 2N5840 transistors.

eral hundred percent for changes in I_C of only tens of percent. Obviously, this value of collector-emitter voltage is not $V_{CE(SAT)}$. Assuming that the transistor is indeed operating in the saturation region during the measurement of $V_{CE(SAT)}$ is of utmost importance.

As was indicated earlier, the definition of saturation is when both the collector-base and the emitter-base junctions are forward-biased. In practice the bias conditions to assure saturation are difficult to determine. It is more convenient to observe the gain to determine saturation. The d-c common emitter current gain, β , is the ratio of I_C to I_B . When the transistor is operating in the saturation region, this ratio is referred to as the forced gain, since both I_C and I_B are set in order to force the transistor to operate in saturation. It is convenient to consider a transistor to be in saturation if

$$\beta_{\text{forced}} \ll \beta_{\text{active}}.$$

Measurements were made of V_{CE} as a function of base and collector currents for the three transistor types. The base and collector currents were sensed with a current transformer, the output of which was viewed on an oscilloscope. As outlined in the method, the current could have been measured by using an oscilloscope with a differential input to measure voltage across resistors in series with the base and the collector.

The results of varying I_C with I_B fixed are shown for the 2N2222 in figure 5a, for the 2N3055 in figure 5b, and the 2N5840 in figure 5c. In each case the value chosen for I_B was the value required in the detailed military specification. The value required for I_C in that specification is indicated by an arrow in each case. The data are combined in figure 6 which shows the percentage change in V_{CE} versus percentage change in I_C for the three transistor types. Each data point represents the average value for the three devices sampled. Similar curves of V_{CE} versus I_B , with I_C constant, are shown in figure 7. Figure 8 shows the results combined. Again, in each case, the value which was fixed for I_C is from the detailed military specification and the I_B value required in that specification is noted.

The results show that V_{CE} is sensitive to both I_C and I_B in most cases. Errors in measuring these currents can result in significant errors in the measured value of $V_{CE(SAT)}$. For this reason the method stresses the necessity of making accurate measurements of these currents. The portion of the curves where the slope is very steep represents operation of the transistor in or very near the active region. A measurement of V_{CE} here is not of $V_{CE(SAT)}$. When I_B and I_C (or the forced β) are selected in the specification for this method, care should be taken so that this measurement is made well within the saturation region so that errors in setting the currents will not cause the measurement to be made in the active region. For the three transistor types used in this report, the value of forced β given in the detailed specification of the military standard is 10 in each case. That is, the $V_{CE(SAT)}$ measurement is made with an I_C to I_B ratio of 10. This is the same value chosen for

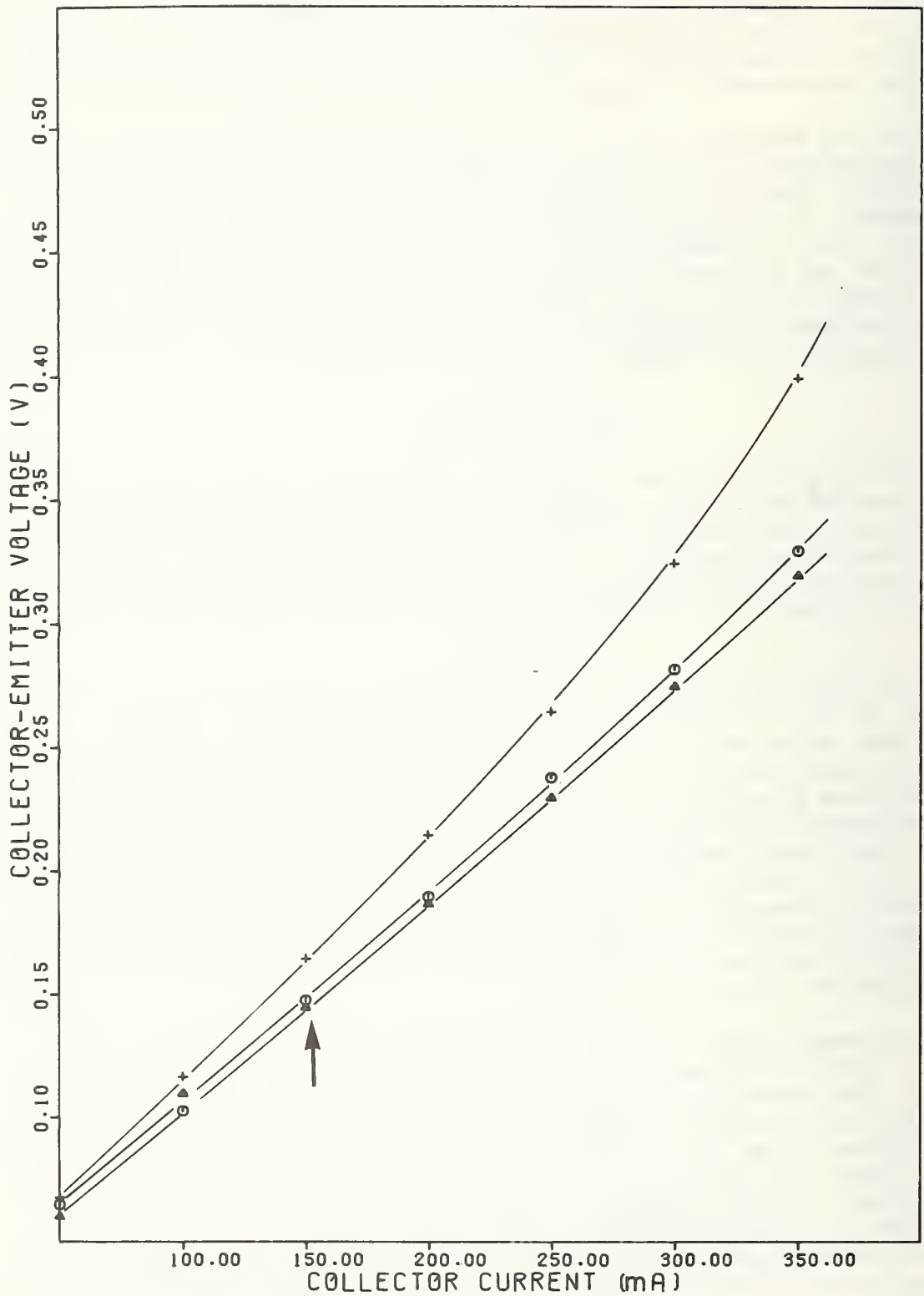


Figure 5a. Collector-emitter voltage as a function of collector current with a fixed base current of 15 mA for each of the three 2N2222 transistors.

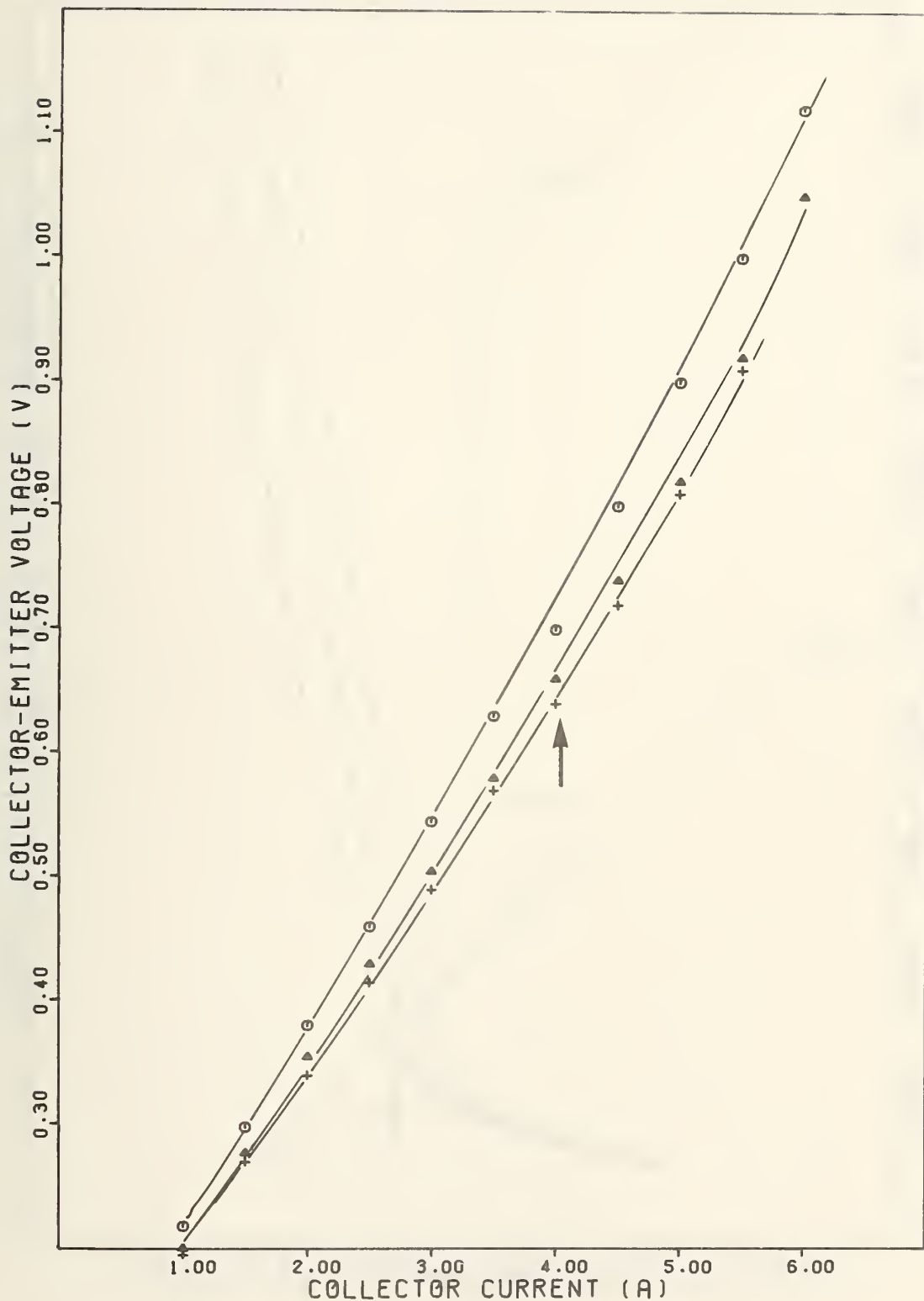


Figure 5b. Collector-emitter voltage as a function of collector current with a fixed base current of 400 mA for each of the three 2N3055 transistors.

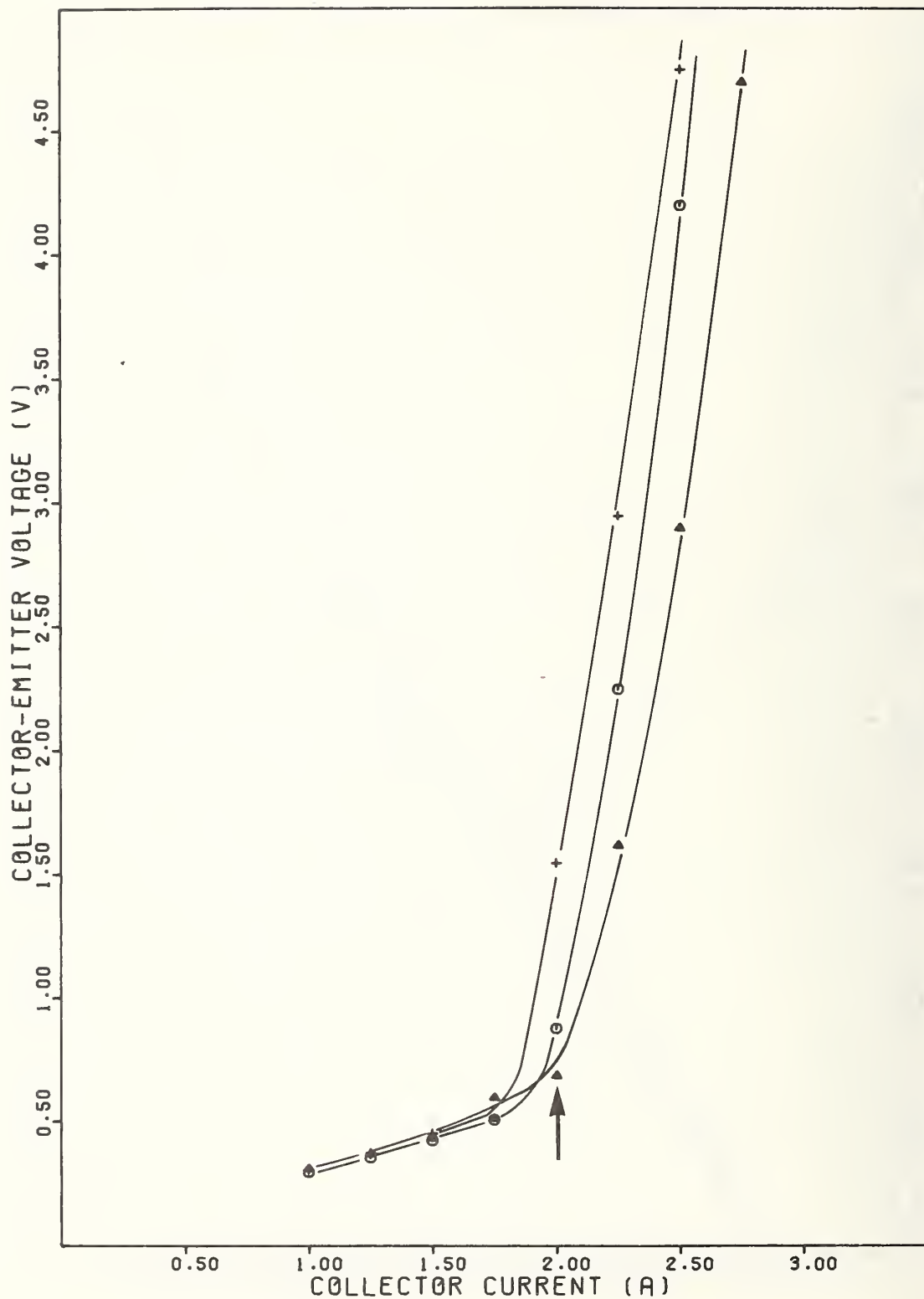


Figure 5c. Collector-emitter voltage as a function of collector current with a fixed base current of 200 mA for each of the three 2N5840 transistors.

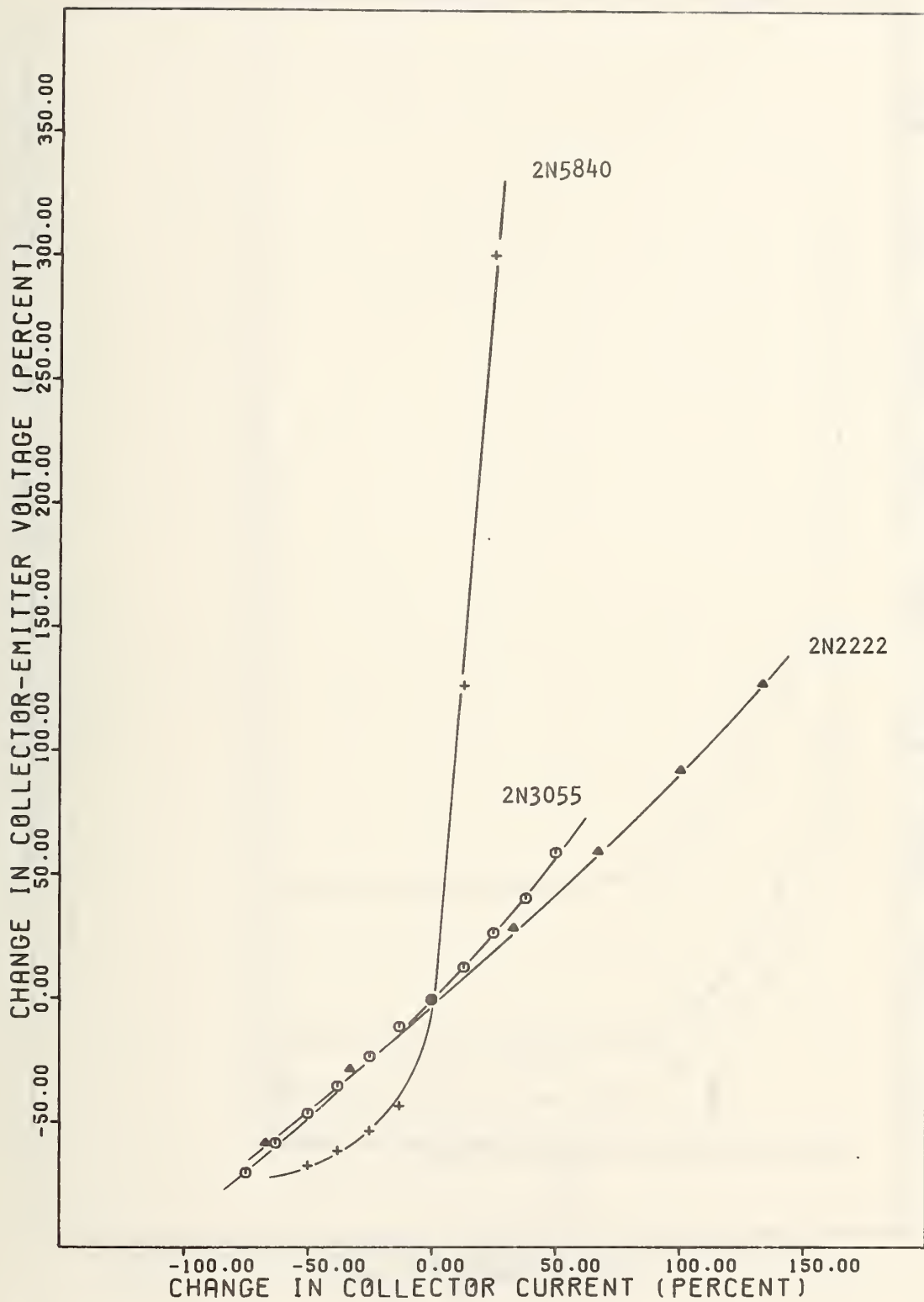


Figure 6. Typical change in collector-emitter voltage as a function of change in collector current.

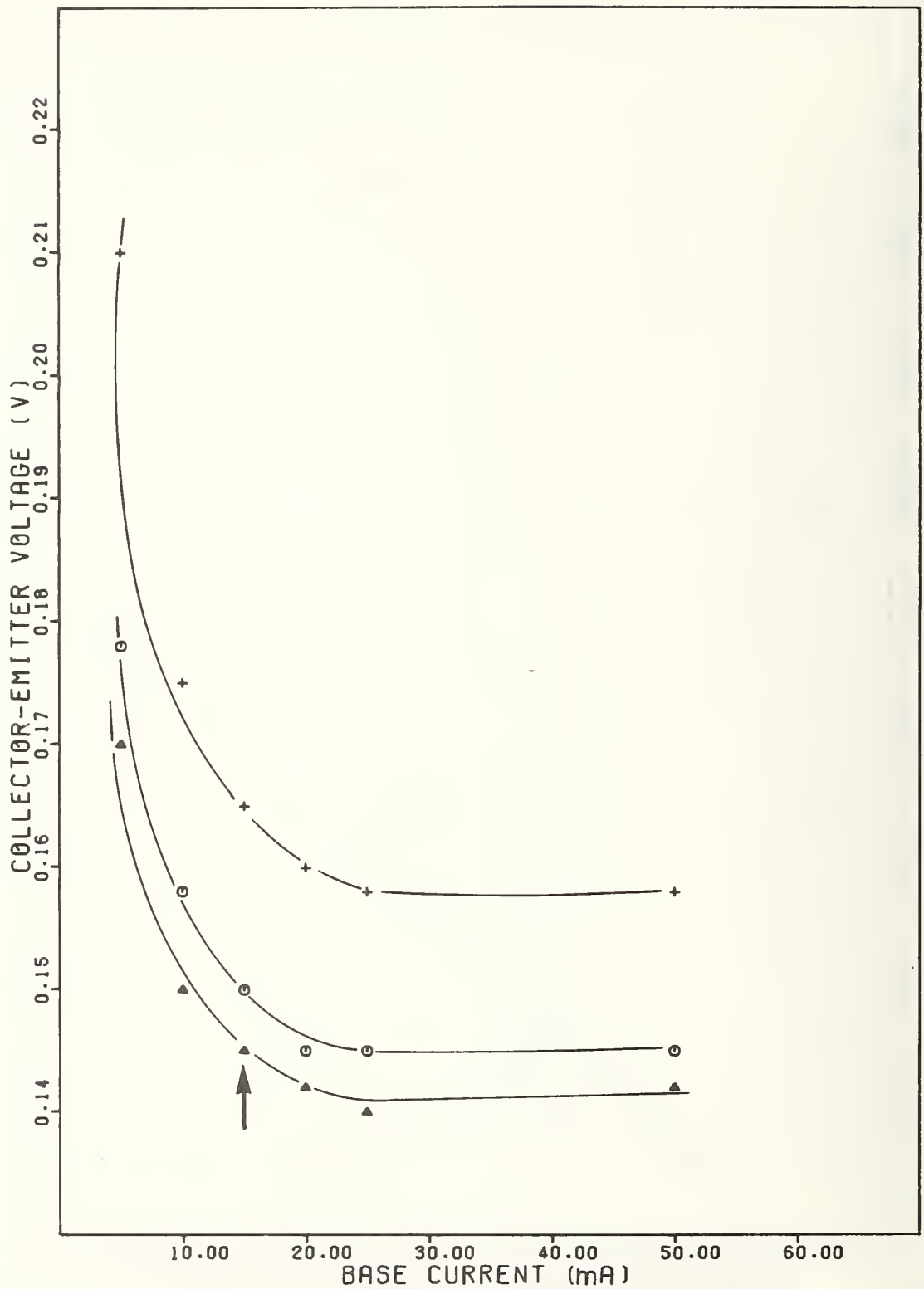


Figure 7a. Collector-emitter voltage as a function of base current with a fixed collector current of 150 mA for each of the three 2N2222 transistors.

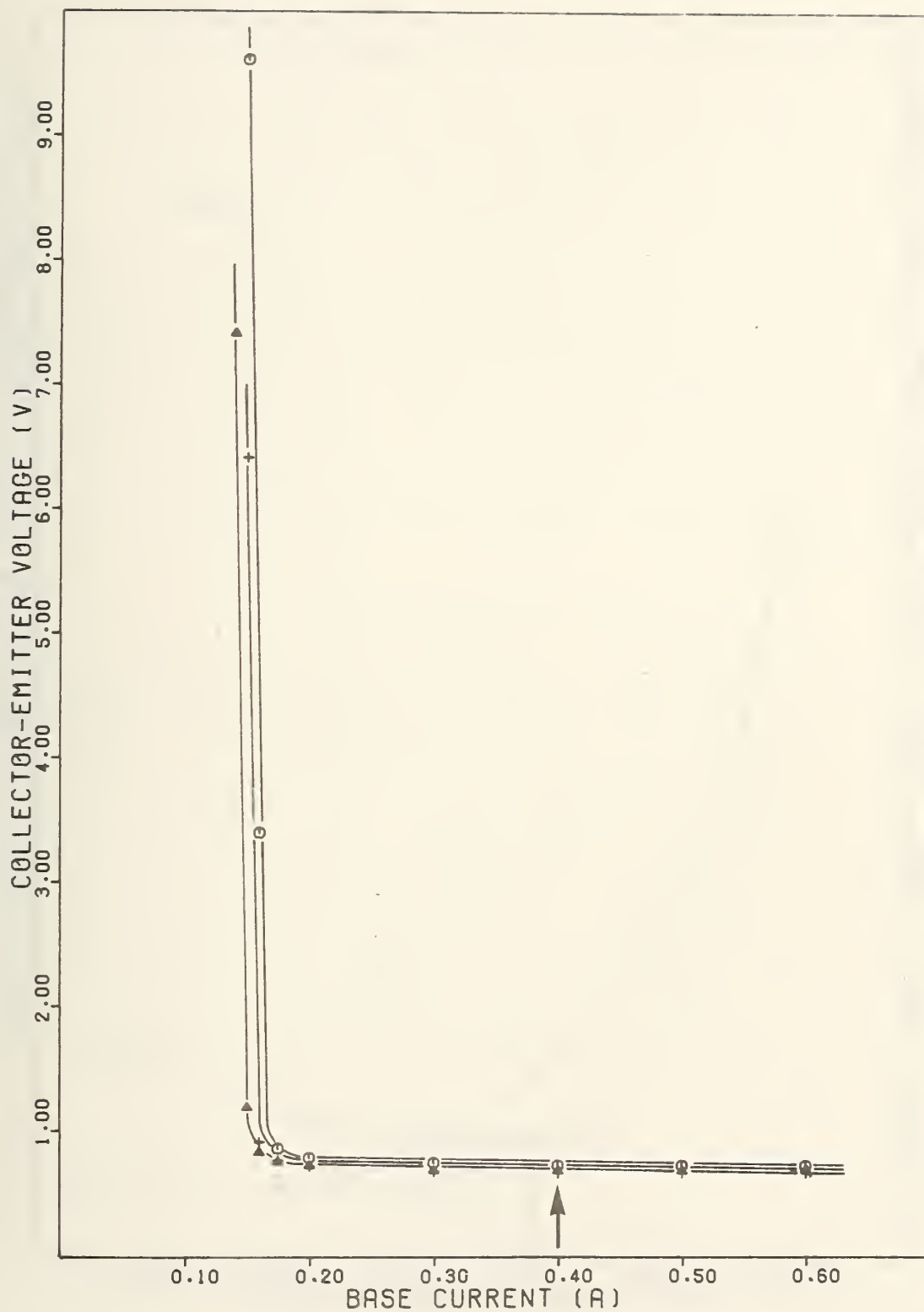


Figure 7b. Collector-emitter voltage as a function of base current with a fixed collector current of 4 A for each of the three 2N3055 transistors.

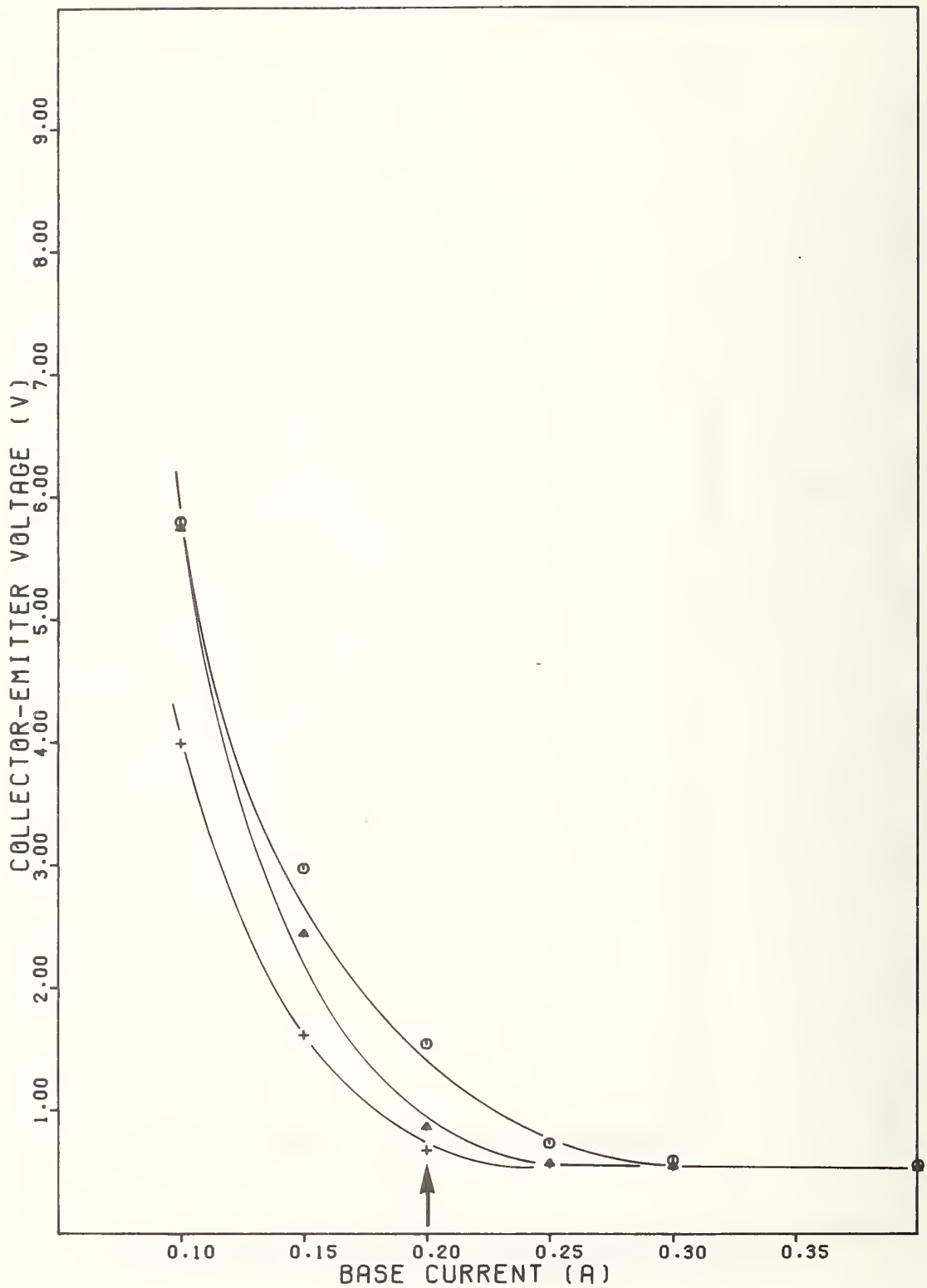


Figure 7c. Collector-emitter voltage as a function of base current with a fixed collector current of 2 A for each of the three 2N5840 transistors.

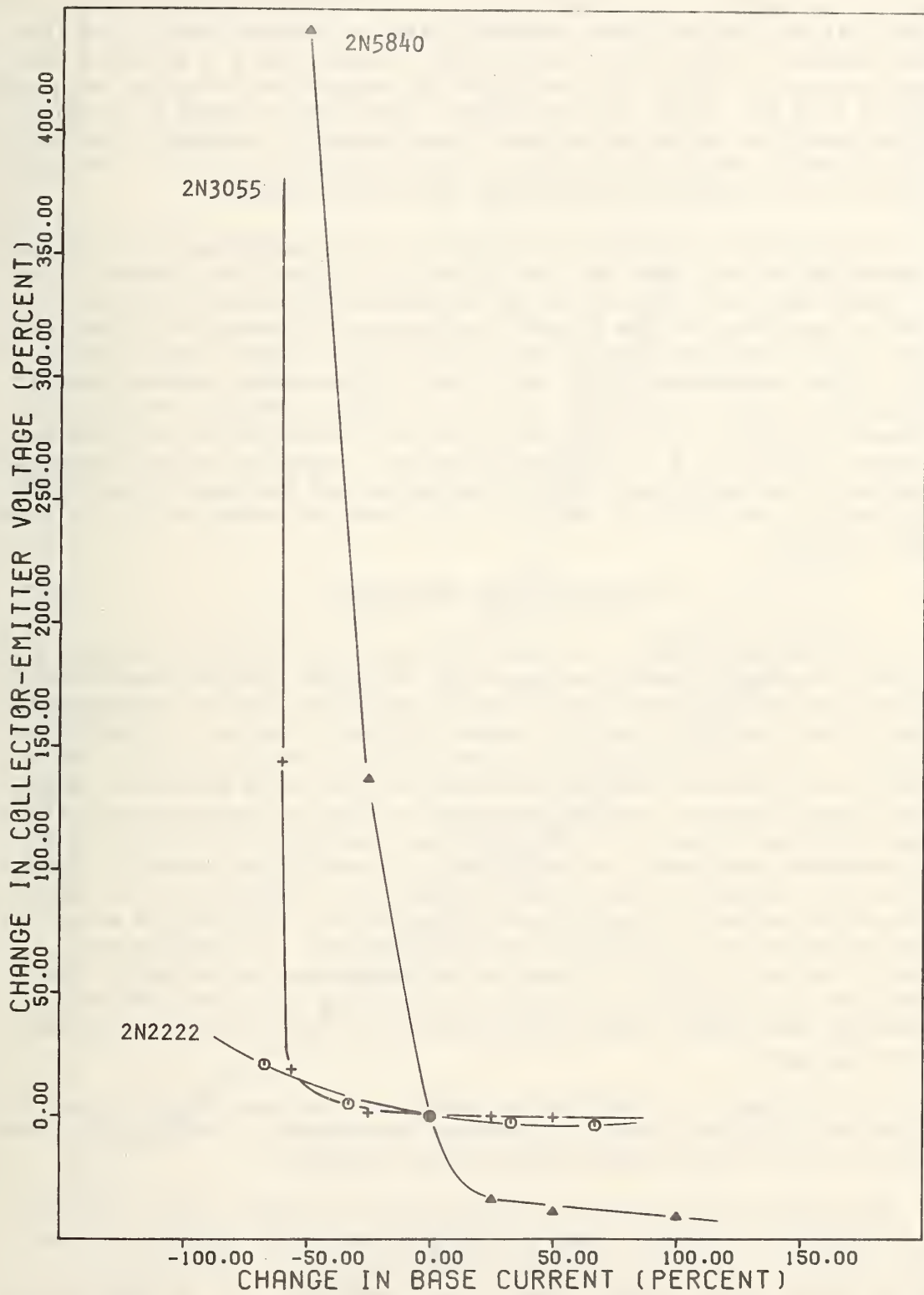


Figure 8. Typical change in collector-emitter voltage as a function of change in base current.

nearly every transistor for which there is a detailed military specification. It is also the ratio commonly given on manufacturer's specification sheets. In our case, for the 2N2222 which has a β in the active region in excess of 100, the condition for saturation is easily met with a forced β of 10. Also, for the 2N3055, which has a normal β of about 50, the condition is satisfied over a wide range of currents. For the 2N5840, however, which has a minimum specified gain of only 10, using a forced β of 10 is operating very near the active region.

To illustrate the effect of forced β on the measurement of $V_{CE(SAT)}$, an investigation was made into the effect of varying this factor. Figure 9 shows V_{CE} as a function of I_C for different values of forced β . It can be seen that as the forced β approaches the normal β of the transistor, small variations in I_C give increasingly larger variations in V_{CE} . If the measurement point is on one of these steep curves, precise measurement of V_{CE} is difficult and it is doubtful whether the results represent $V_{CE(SAT)}$. It is not the intent of the method to describe how to choose the forced β of the specification. Since it is very important, the method gives guidelines for its selection and outlines a test which can be made to determine if the selection provides operation in the saturation region.

OTHER IMPORTANT PARAMETERS

There are other practical considerations for measuring $V_{CE(SAT)}$ particularly in power transistors where the collector currents used can be many amperes so that even a small series resistance in the voltage measuring circuit can be a serious source of error. The use of Kelvin connections, such as illustrated in figure 10 for a transistor in a TO-3 package, can eliminate most of these series resistance problems. With Kelvin connections the voltage measuring circuit is separated from the current driving circuit. The voltage measurement is made with a very high impedance instrument so that there is a negligible amount of current in that portion of the circuit. There is a separate set of leads to which the current driving circuit is attached. If there is an extraneous resistance in the voltage measuring circuit, the voltage drop across it is negligible. If there is an extraneous resistance in the current driving circuit, the voltage drop across it is not involved in the voltage measurement and therefore will not lead to an error in measuring $V_{CE(SAT)}$.

Note in figure 10 that Kelvin connections are made only to the emitter and collector leads. No voltage measurement is made in the base circuit so that Kelvin connections are not required.

The method requires Kelvin connections to be made on the collector and emitter leads for all types of transistors tested. There are perhaps transistor types which have a high $V_{CE(SAT)}$ at a low collector current for which Kelvin connections are not essential. It is difficult to incorporate into the method a means of judging when to use Kelvin connections since the possible size of an extraneous resistance is not known. Since the majority of transistor types require Kelvin connections in any

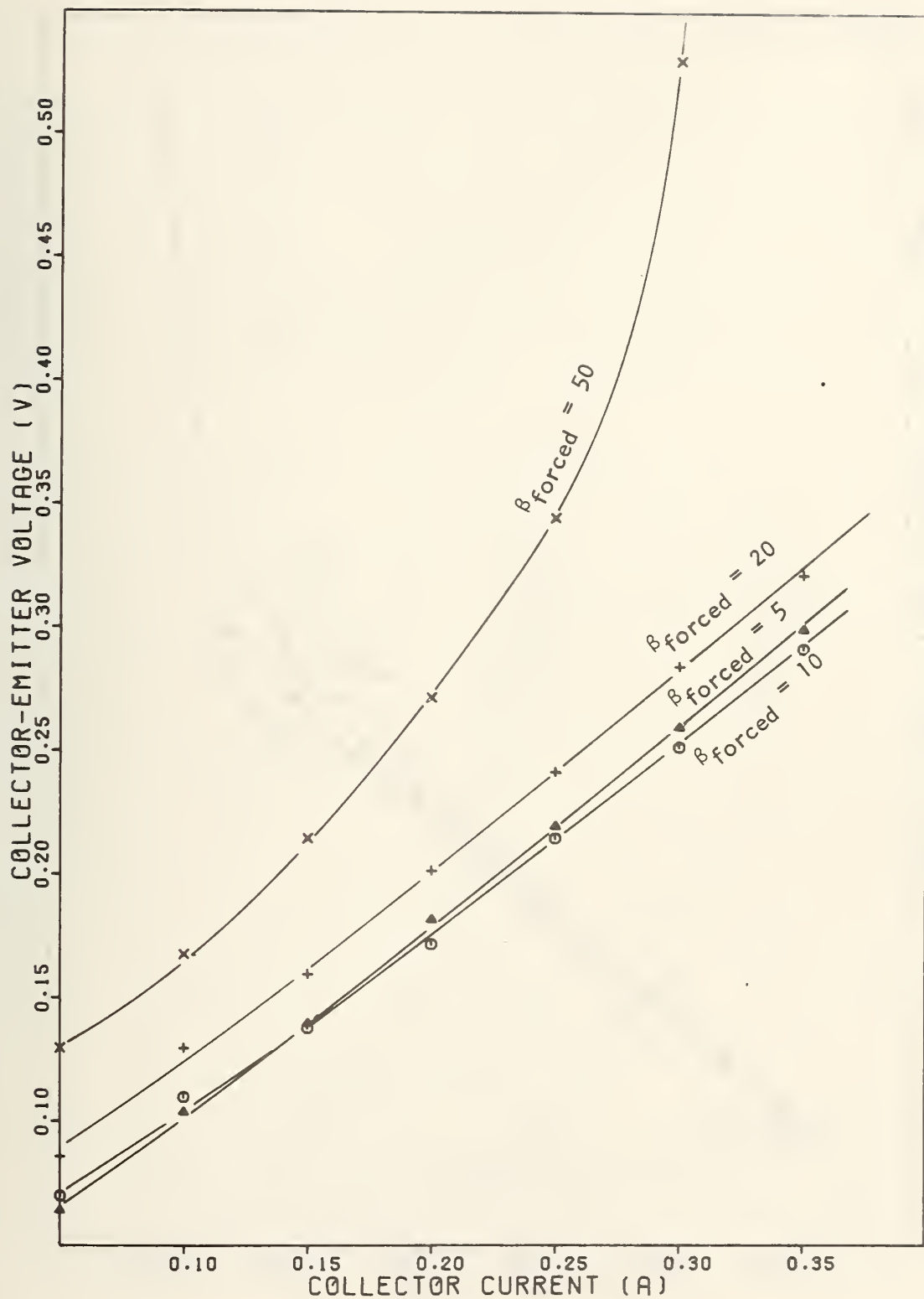


Figure 9a. Collector-emitter voltage as a function of collector current for different values of forced β for a 2N2222 transistor.

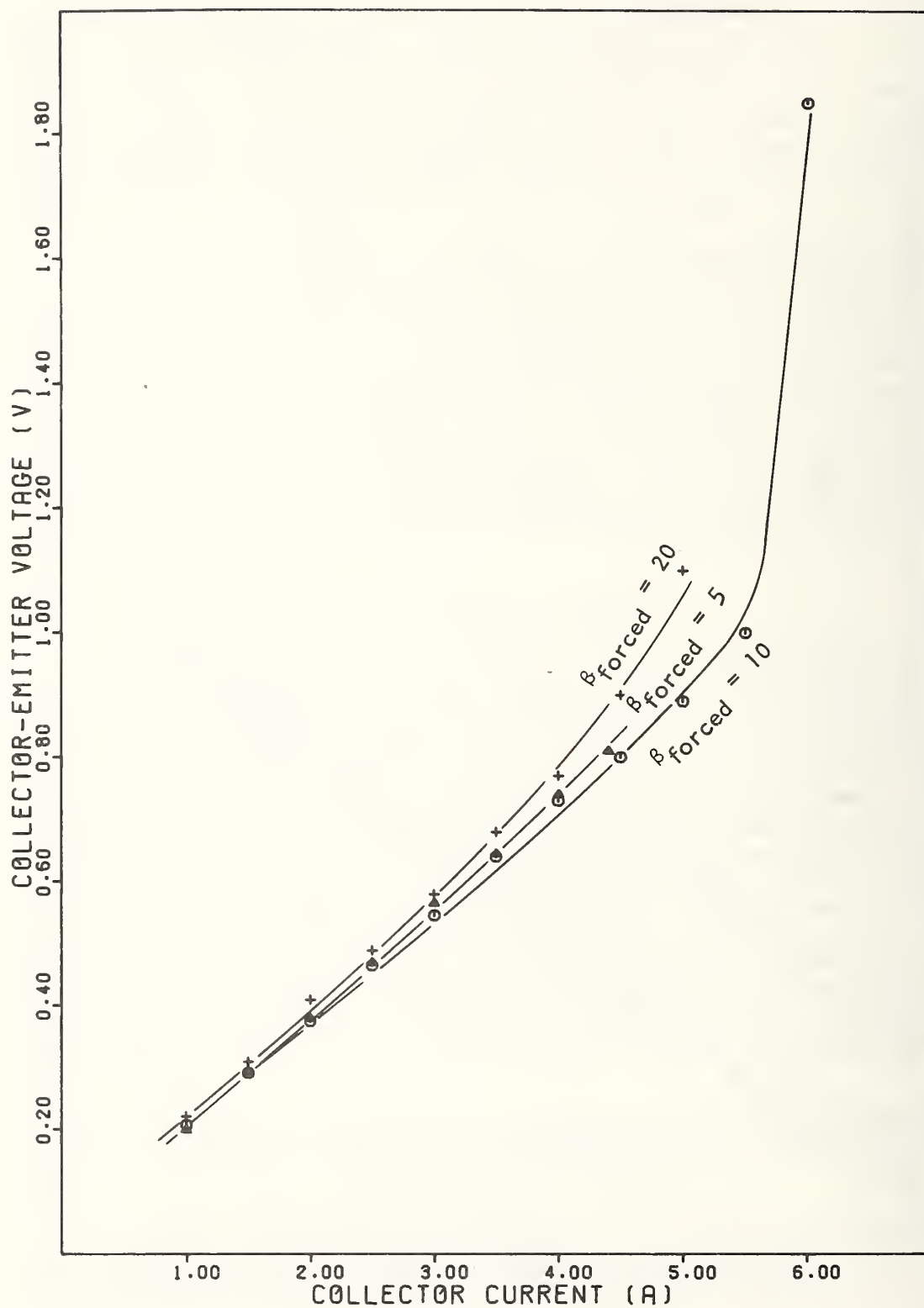


Figure 9b. Collector-emitter voltage as a function of collector current for different values of forced β for a 2N3055 transistor.



Figure 9c. Collector-emitter voltage as a function of collector current for different values of forced β for a 2N5840 transistor.

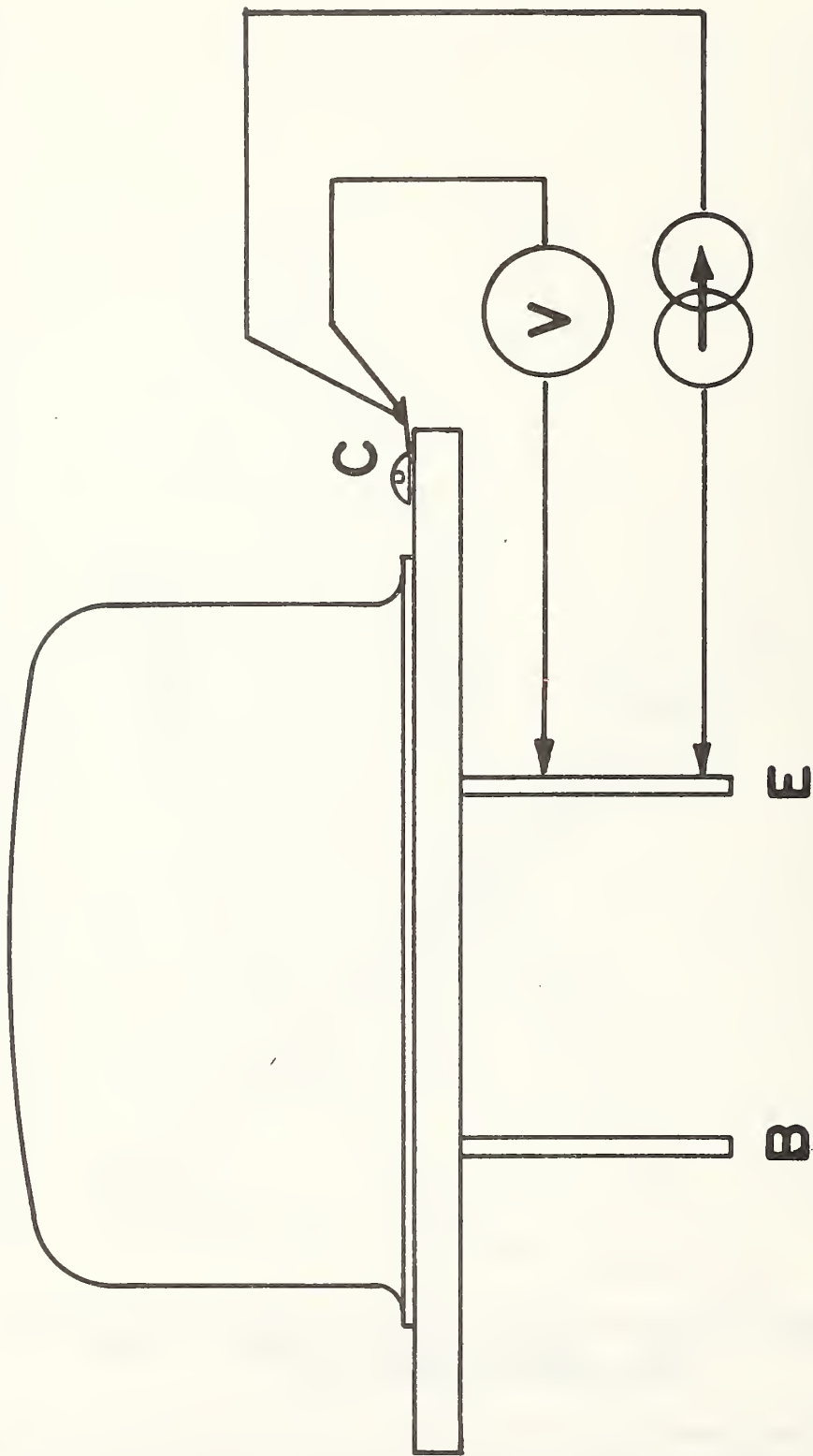


Figure 10. Illustration of Kelvin connections.

case, it is more appropriate to require their use on all transistor types.

The effect of another type of extraneous resistance is not correctable by the use of Kelvin connections. These are series resistances that occur in the circuit between the transistor and the point where the voltage sensing connection is made. The current provided by the current driving circuit will cause a voltage drop across such a resistance which will be measured by the voltage measuring circuit as part of $V_{CE(SAT)}$. An example of such a resistance is the resistance of the leads of the transistor. For this reason, the method requires that contact be made reproducibly to the transistor within 3 mm of the transistor case. Another source of resistance is contact resistance due to poor or dirty contacts. The method requires that the transistor holder have good quality contacts and that they be kept clean.

Another source of error in the measurement of $V_{CE(SAT)}$ is variations in the measurement circuit itself. The current levels used, particularly for power transistors, require considerable power dissipation in the resistors in the collector circuit. Care should be taken to select resistors that are capable of handling this power without changing resistance. In the pulsed method, a temperature drift in the resistors R_B and R_C could cause serious error in the measurement of $V_{CE(SAT)}$ because the measurement would be made at the wrong values of I_B and I_C .

When the pulsed method is used, the voltage measurement of $V_{CE(SAT)}$ must be made with an instrument capable of measuring the voltage of one portion of a pulse with respect to the ground potential. See figure 3 in the method. This measurement can be made with an oscilloscope if it is capable of accurately following the pulse from the high level which occurs when the current pulse is off to the low level of $V_{CE(SAT)}$ when the current pulse is on. If, however, the amplifiers in the oscilloscope saturate, an erroneous measurement of $V_{CE(SAT)}$ will be made. One way to avoid this is by application of a clamping circuit at the input of the oscilloscope. The effect of this circuit is to lower the voltage during the time the current pulse is off so that it is similar in magnitude to the value of $V_{CE(SAT)}$ when the current pulse is on. An oscilloscope can easily follow the new pulse shape without saturating. An example of such a circuit is shown in Appendix X2 of the method.

A clamping circuit similar to that shown was used in the $V_{CE(SAT)}$ measurements described. In order to determine if the addition of the clamping circuit caused error in the measured value of $V_{CE(SAT)}$, the current was measured in the 1000- Ω resistor. It was found to be less than 1 μA during the time the base current pulse was on and the $V_{CE(SAT)}$ measurement was being made. Therefore, the clamping circuit did not cause a measurable extraneous voltage drop to occur as part of $V_{CE(SAT)}$.

SUMMARY

A method for the measurement of $V_{CE(SAT)}$ has been outlined and discussed. It was found that the most important factor in the measurement

of $V_{CE(SAT)}$ was the selection of the forced β . Precise measurement of base and collector currents is necessary. Small temperature changes are usually not important. The use of Kelvin connections to eliminate errors due to extraneous resistances is very important. Short lead lengths on the test transistors and good quality connections and contacts should be maintained. Good quality circuit components with adequate power rating should be used.

ACKNOWLEDGMENT

D. L. Blackburn, G. J. Rogers, and T. F. Leedy have provided useful comments and suggestions in the preparation of this report.

REFERENCES

1. JEDEC Recommendations for Letter Symbols, Abbreviations, Terms, and Definitions for Semiconductor Device Data Sheets and Specifications, JEDEC Publication No. 77A, p. D1 (March 1974).
2. Ebers, J. J., and Moll, J. L., Large-Signal Behavior of Junction Transistors, *Proc. IRE* 42, 1761-1772 (1954).

APPENDIX

METHODS TO MEASURE TRANSISTOR
COLLECTOR-EMITTER SATURATION VOLTAGE

Document No.:

Draft No.: 1

Date: June 1, 1977

Prepared by: K. O. Leedy
(301) 921-3625

1. Scope

1.1 These methods cover tests to determine transistor collector-emitter saturation voltage $V_{CE(SAT)}$ under specified conditions.

1.2 The d-c method is applicable at currents low enough to produce negligible heating in the junction.

1.3 The pulse method is applicable at high currents which would cause significant heating in the junction if not pulsed.

1.4 Before this test method can be implemented, test conditions which are appropriate for the transistor type to be measured must be selected and agreed upon by the parties to the test. Conditions will vary from one transistor type to another, and are determined in part by the intended application of the transistor. The d-c condition chosen should permit continuous operation of the device under test. The pulsed method should permit repetitive operation of the device under test. The following test conditions must be specified:

1.4.1 Choice of either d-c or pulse method,

1.4.2 Permissible range of ambient temperature if other than nominally 20°C,

1.4.3 Collector current I_C at which the measurement is to be made,

1.4.4 Base current I_B at which the measurement is to be made, and

1.4.5 Pulse duration and duty cycle of current pulse if other than 300 μ s and 2%.

2. Summary of Methods

2.1 The base and collector currents of the transistor under test are each in turn adjusted to be at a specified value. The collector-emitter voltage is then measured.

3. Significance and Use

3.1 The collector-emitter saturation voltage of a transistor is a basic parameter of a transistor included in purchase specifications. The saturation voltage can be used for design purposes to predict the performance of a transistor used in saturated switching applications, such as in d-c to a-c power inverters, chopping circuits, and logic circuits as well as other circuits. Differences in $V_{CE(SAT)}$ before and after irradiation are a measure of radiation damage in the transistor.

4. Description of Terms

4.1 collector-emitter saturation voltage - of a transistor, the voltage developed between the collector and emitter when the transistor is operated in the saturation region.

4.2 saturation region - a base-current and a collector-current condition resulting in both the emitter-base and the collector-base junction being forward biased.

5. Interferences

5.1 During the test, care must be taken to maintain the ambient temperature within the specified range. Deviations may invalidate test results.

5.2 Care must be taken in the selection of I_C and I_B for the test to assure that the transistor is operating in the saturation region. Generally, when in saturation the ratio I_C to I_B is less than one tenth the gain of the transistor in the active region for the same base current. If a suitable ratio is not maintained, the test results may be invalid. A method for determining if a transistor is in saturation is given in Appendix Xl.

d-c Method

6. Apparatus

6.1 Transistor Test Fixture - fixture to attach the transistor to be tested to the test circuit. Contacts shall be clean and of good quality. Kelvin connections shall be made to the collector and emitter leads. Electrical contact of the voltage measuring leads to collector and emitter leads shall be made to the transistor leads within 3 mm of the transistor case.

6.2 Voltmeter V_1 - voltmeter with an input impedance greater than $100 \frac{V_{CE(SAT)}}{I_C}$ capable of measuring d-c voltage in the range of the anticipated $V_{CE(SAT)}$ with a full scale accuracy of $\pm 0.5\%$ or better.

6.3 Ammeter A_1 - d-c ammeter capable of measuring current in the range of the specified base current with a full scale accuracy of $\pm 0.5\%$ or better.

6.4 Ammeter A₂ - ammeter capable of measuring current in the range of the specified collector current with a full scale accuracy of $\pm 0.5\%$ or better.

6.5 Voltage Sources - d-c voltage sources (sources 1 and 2, Fig. 1) meeting the following specifications:

6.5.1 Stable to within $\pm 0.25\%$ of the set voltage,

6.5.2 Noise and ripple less than 0.5% of the output voltage, and

6.5.3 Adjustable over a nominal range of zero to 30 volts.

6.6 Resistors - resistors (R_B and R_C) which meet the following requirements:

6.6.1 R_B shall have a resistance of approximately $R_B = \frac{20}{I_B} \Omega$ where I_B is the specified base current in amperes. The resistance shall be known to within 1% . It shall be capable of dissipating at least $I_B^2 R_B$ watts. It shall have a temperature coefficient of resistance less than $0.1\%/^{\circ}\text{C}$.

6.6.2 R_C shall have a resistance of approximately $R_C = \frac{20}{I_C} \Omega$ where I_C is the specified collector current in amperes. The resistance shall be known to within 1% . It shall be capable of dissipating at least $I_C^2 R_C$ watts. It shall have a temperature coefficient of resistance less than $0.1\%/^{\circ}\text{C}$.

6.7 Temperature Measuring Instrument - instrument to measure the ambient temperature with an accuracy of $\pm 2\%$ in the range of the specified ambient temperature.

7. Sampling

This method determines the properties of a single specimen. If sampling procedures are used to select devices for test, they must be agreed upon in advance by the parties to the test.

8. Procedure

8.1 Assemble the circuit shown in Fig. 1.

8.2 Set both voltage sources at zero volts and insert transistor to be tested into transistor test fixture.

8.3 Measure and record the ambient temperature in the vicinity of the test fixture.

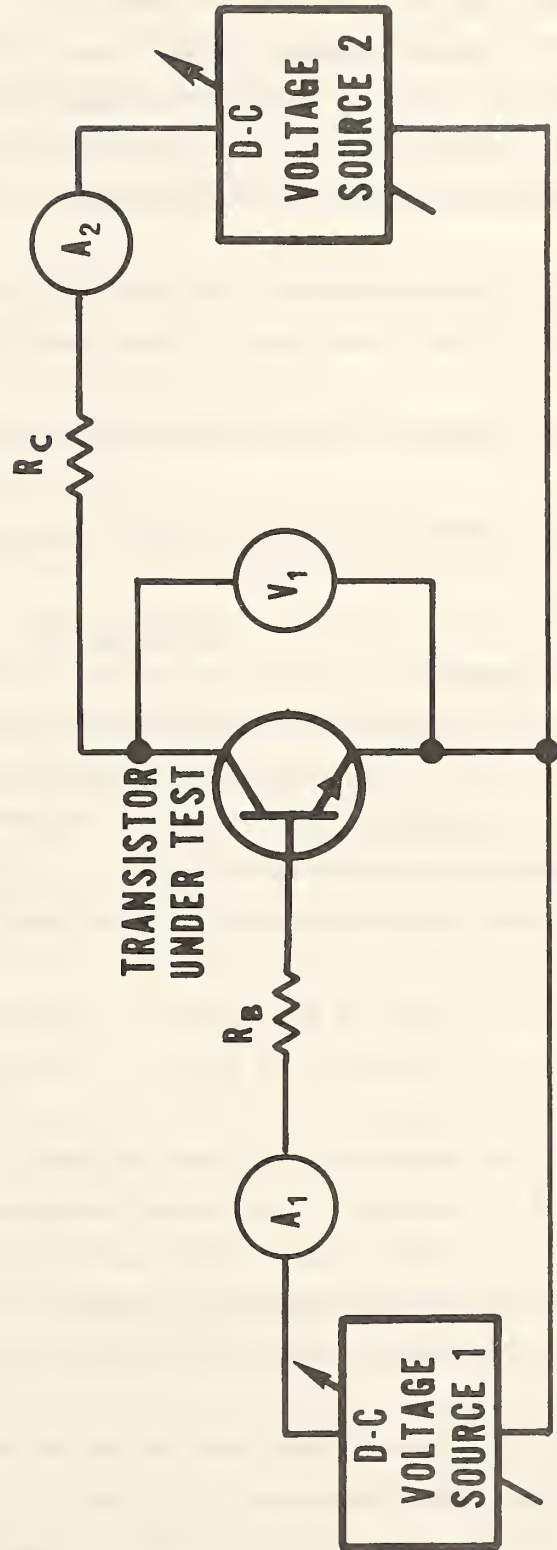


Figure 1. Test circuit for use with the d-c method.

8.4 Adjust voltage source 1 until the base current equals the specified value as measured on ammeter A_1 .

8.5 Adjust voltage source 2 until the collector current equals the specified value as measured on ammeter A_2 .

8.6 Check ammeter A_1 to see if it still reads the specified value and, if not, readjust voltage source 1 to obtain the specified value.

8.7 Check ammeter A_2 to see if it still reads the specified value and, if not, readjust voltage source 2 to obtain the specified value.

8.8 Repeat 8.6 and 8.7 until no further readjustments are required.

8.9 Measure and record the voltage on voltmeter V_1 . This is $V_{CE(SAT)}$.

Pulse Method

9. Apparatus

9.1 In addition to items 6.1, 6.6, 6.7 and voltage source 2 described in 6.5, the following apparatus is required.

9.1.1 Pulsed Voltage Source - Pulsed voltage source which meets the following requirements:

9.1.1.1 Adjustable output which is sufficient to provide I_B required,

9.1.1.2 Polarity selectable as either positive or negative,

9.1.1.3 Rise and fall times of less than 0.1 times the pulse width used,

9.1.1.4 Droop of less than 5%, and

9.1.1.5 Capable of producing the pulse width of 300 μs with a duty cycle of 2% or other pulse width and duty cycle if specified.

9.1.2 Current Measuring Equipment - equipment for measuring base current and collector current described in 9.1.2.1 and 9.1.2.2 or 9.1.2.3.

9.1.2.1 Current probe and an amplifier which used together meet the following requirements:

9.1.2.1.1 Rise time less than or equal to 0.1 times the pulse width used,

9.1.2.1.2 Accuracy $\pm 3\%$ or better,

9.1.2.1.3 Sensitivity of 0.1 V/A or better,

9.1.2.1.4 Core saturation rating exceeding the product of the current to be measured and its pulse width, and

9.1.2.1.5 Low-frequency response such that a square pulse of the width used in the test results in a negative tilt of less than 3% in the pulse interval.

9.1.2.2 Oscilloscope 1 - general-purpose laboratory oscilloscope meeting the following specification:

9.1.2.2.1 Bandwidth of d-c to 10 MHz minimum,

9.1.2.2.2 Input resistance greater than or equal to 100 times the resistance across which it is measuring,

9.1.2.2.3 Deflection factors covering at least the range from 5 mV/div to 1 V/div.

9.1.2.3 Oscilloscope 2 - general-purpose laboratory oscilloscope as described in 9.1.2.2 with the following additional requirements:

9.1.2.3.1 Capability of differential measurements with both inputs isolated from test circuit common, and

9.1.2.3.2 Common mode rejection ratio of 20 dB minimum.

9.1.3 Voltage Measuring Means - instrument for measuring and displaying the voltage waveform of nominally square pulses having the specified pulse width and duty cycle (see 9.1.1.5) and with a voltage range of zero to 20 V.

10. Sampling

10.1 This method determines the properties of a single specimen. If sampling procedures are used to select devices for test, they must be agreed upon in advance by the parties to the test.

11. Procedure

11.1 With voltage source 2 set at zero volts, assemble the circuit shown in Fig. 2. Set the pulsed voltage source to have a pulse width of 300 μ s and a duty cycle of 2% unless otherwise specified.

11.2 Insert transistor to be tested into transistor test fixture.

11.3 Measure and record the ambient temperature in the vicinity of the test fixture.

11.4 Set the base and collector currents equal to the specified

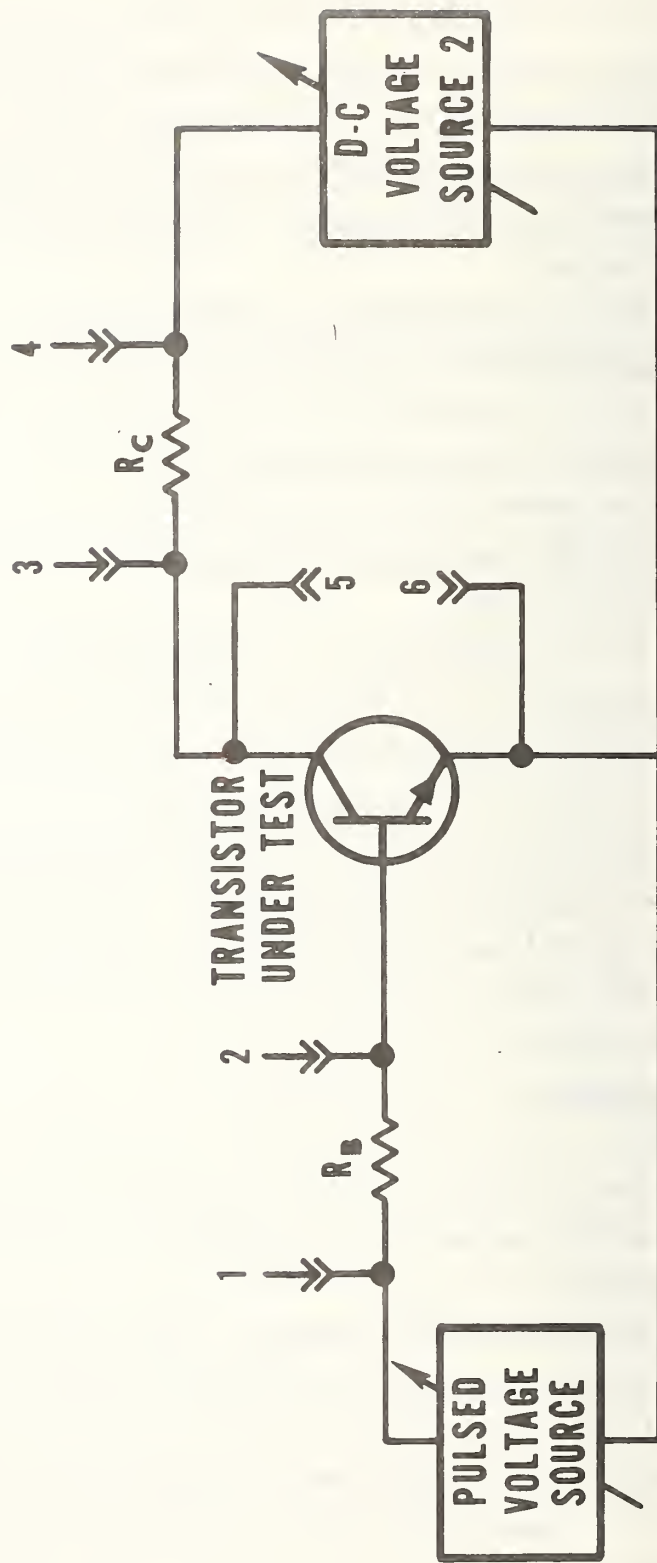


Figure 2. Test circuit for use with the pulsed method.

values using either 11.4.1 or 11.4.2.

11.4.1 Use a current transformer to set the base and collector currents as follows:

11.4.1.1 Attach the current probe and amplifier combination to oscilloscope 1 and position the current probe to monitor the current in R_B .

11.4.1.2 Adjust the pulsed voltage source to obtain the specified I_B .

11.4.1.3 Position the current probe to monitor the current in R_C .

11.4.1.4 Adjust the voltage source 2 to obtain the specified I_C .

11.4.1.5 Remeasure the current in R_B . If other than specified I_B , readjust the pulsed voltage source to obtain specified I_B .

11.4.1.6 Remeasure the current in R_C . If other than specified I_C , readjust voltage source 2 to obtain specified I_C .

11.4.1.7 Repeat 11.4.1.5 and 11.4.1.6 until no further readjustment is necessary.

11.4.2 Use oscilloscope 2 to set the base and collector currents as follows:

11.4.2.1 Calculate and record $V_B = I_B R_B$ where I_B is the required base current.

11.4.2.2 Adjust the pulsed voltage source to obtain the required V_B as measured with oscilloscope 2 connected differentially across points 1 and 2.

11.4.2.3 Calculate and record $V_C = I_C R_C$ where I_C is the required collector current.

11.4.2.4 Adjust voltage source 2 to obtain the required V_C as measured with oscilloscope 2 connected differentially across points 3 and 4.

11.4.2.5 Remeasure the voltage across points 1 and 2. If this is other than V_B , readjust the pulsed voltage source to obtain V_B .

11.4.2.6 Remeasure the voltage across points 3 and 4. If this is other than V_C , readjust voltage source 2 to obtain V_C .

11.4.2.7 Repeat 11.4.2.5 and 11.4.2.6 until no further readjustment is necessary.

11.5 With the voltage measuring means described in 9.1.3 connected across points 5 and 6, observe the voltage waveform which is similar to that shown in Fig. 3. Measure and record the voltage difference,

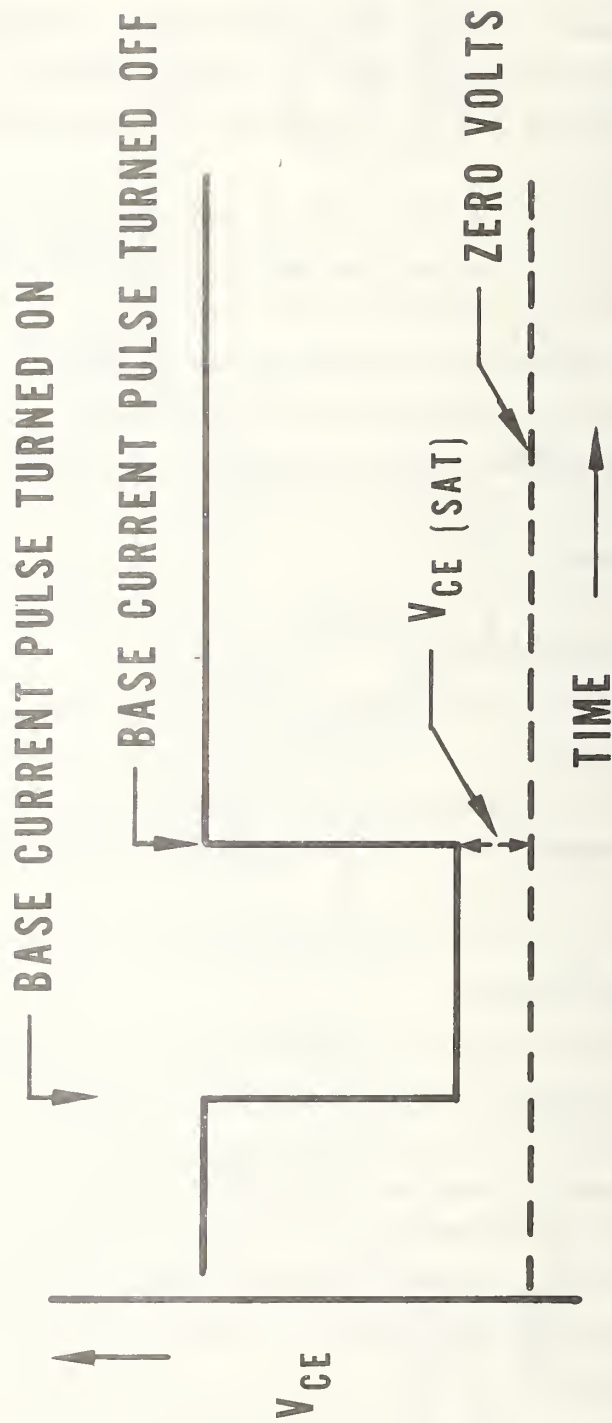


Figure 3. Voltage waveform as observed with an oscilloscope in the pulsed method.

V, indicated as $V_{CE(SAT)}$ in the figure.

Note 1 - Since the voltage difference to be measured is small compared to the pulse height, some difficulty may be encountered in making the measurement of $V_{CE(SAT)}$, depending on the detailed performance characteristics of the equipment used. Appendix X2 describes a clamping circuit which lowers the V_{CE} pulse height and details a procedure found satisfactory for its use.

12. Report

12.1 The report for d-c Method shall contain the following:

12.1.1 Name of person performing the test,

12.1.2 Date of the test,

12.1.3 Device type and identification of the transistor tested,

12.1.4 Ambient temperature,

12.1.5 Resistance of resistors R_B and R_C ,

12.1.6 Base and collector currents used in the test, and,

12.1.7 Measured value of the collector-emitter saturation voltage.

12.2 The report for Pulse Method shall contain the following in addition to items 12.1.1 to 12.1.7:

12.2.1 Pulse width, μs , and duty cycle, percent, and

12.2.2 Measured values of V_B and V_C .

13. Precision

No interlaboratory precision data is available at this time.

APPENDIX X1

X1.1 In some applications it is the intention to measure the transistor collector-emitter voltage for a given bias regardless of whether the transistor is operating in the saturation region or not. However, if a measurement of the actual $V_{CE(SAT)}$ is required, one technique that may be used to assure that, with the specified values of I_B and I_C , the transistor is operating in the saturation region is to first measure $V_{CE(SAT)}$ as indicated. Then repeat the measurement with a base current equal to $2I_B$. If the measured value of $V_{CE(SAT)}$ changes by more than 25%, the transistor was not in saturation. In order to determine values of I_B and I_C such that the transistor is operating in the saturation region, it is necessary to plot V_{CE} as a function of I_C/I_B with I_B or I_C fixed. Suitable current values can then be chosen by looking for the flat portion of this curve.

APPENDIX X2

X2.1 One technique that may be used to assist in measuring $V_{CE(SAT)}$ (see Note 1) is the use of a clamping circuit shown connected to the measuring circuit in Fig. X2.1. This clamping circuit acts to maintain the voltage across Q_2 near the anticipated level of the $V_{CE(SAT)}$ of the transistor under test. When the base-current pulse occurs, transistor Q_1 turns on which then turns off transistor Q_2 . The resistor values shown are nominal. Transistors Q_1 and Q_2 can be any transistors whose $V_{CE(SAT)}$ is in the range of the $V_{CE(SAT)}$ of the transistor to be tested. It is convenient to use transistors of the same type as is being tested. With the clamping circuit connected as shown in Fig. X2.1, use the oscilloscope to measure $V_{CE(SAT)}$ and record the measured value.

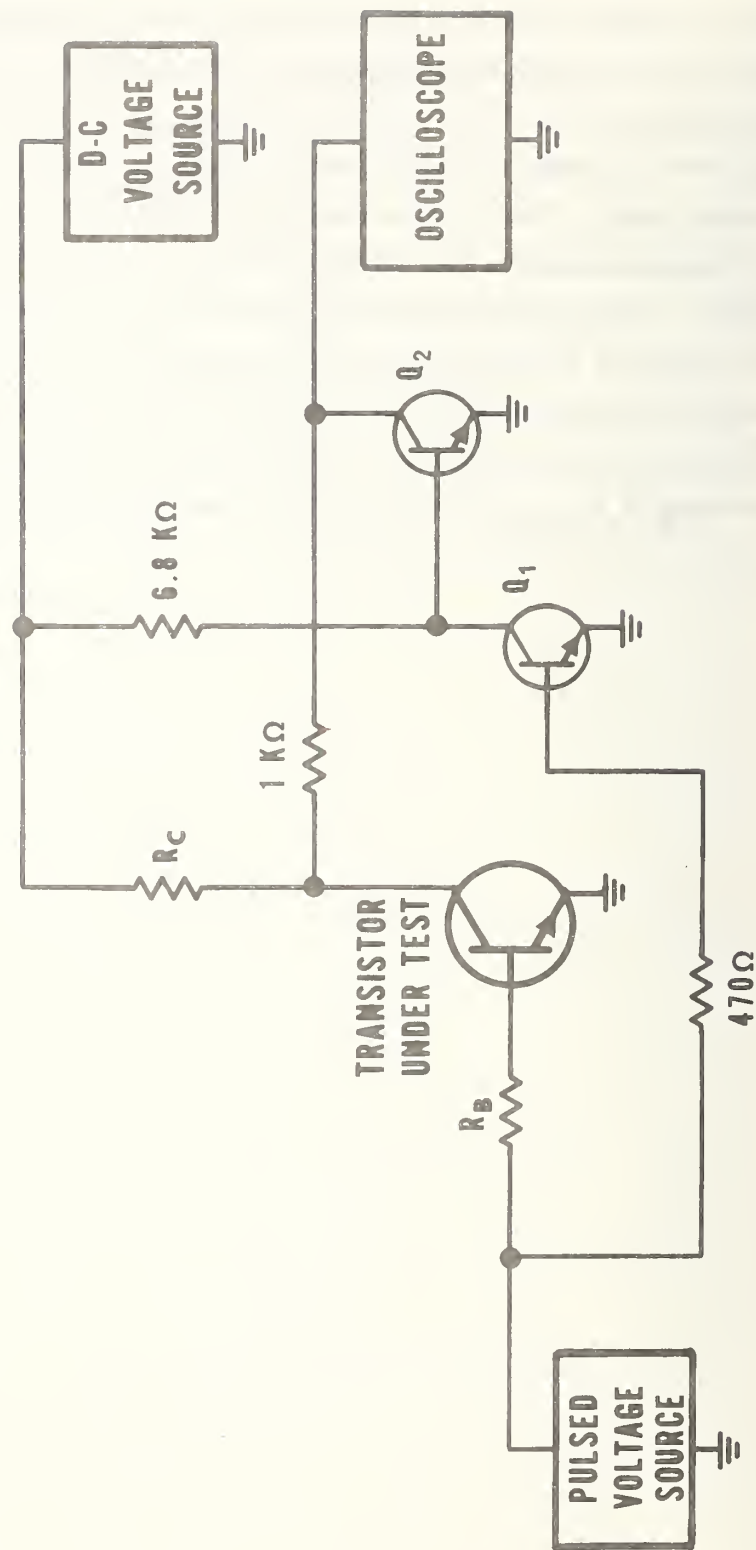


Figure X2.1. Measuring circuit with clamping circuit attached.

DISTRIBUTION

Defense Communication Engineer Center
1860 Wiehle Avenue
Reston, VA 22090
ATTN R410 James W. McLean

Director
Defense Communications Agency
Washington, D.C. 20305
ATTN Code 930 Monte T. Burgett, Jr.

Defense Documentation Center
Cameron Station
Alexandria, VA 22314
ATTN TC (12 copies)

Director
Defense Electronic Supply Center
Dayton, OH 45444
ATTN ECS Robert E. Cooper
ATTN ECS Joseph Dennis

Director
Defense Nuclear Agency
Washington, D.C. 20305
ATTN STTL Tech Library (3 copies)
ATTN STVL
ATTN DDST
ATTN RAEV
ATTN RAEV Maj. W. Adams (2 copies)

Dir of Defense Rsch & Engineering
Department of Defense
Washington, D.C. 20301
ATTN DDR&E(OS)

Commander
Field Command
Defense Nuclear Agency
Kirtland AFB, NM 87115
ATTN FCPR

Director
Interservice Nuclear Weapons School
Kirtland AFB, NM 87115
ATTN Document Control

Director
Joint Strat TGT Planning Staff JCS
Offutt AFB
Omaha, NB 68113
ATTN JLTW-2

Chief
Livermore Division Fld Command DNA
Lawrence Livermore Laboratory
P.O. Box 808
Livermore, CA 94550
ATTN FCPRL

Project Manager
Army Tactical Data Systems
U.S. Army Electronics Command
Fort Monmouth, NJ 07703
ATTN Dwaine B. Huewe

Commander
BMD System Command
P.O. Box 1500
Huntsville, AL 35807
ATTN BDMSC-TEN Noah J. Hurst

Commander
Frankford Arsenal
Bridge and Tacony Streets
Philadelphia, PA 19137
ATTN SARFA-FCD Marvin Elnick

Commander
Harry Diamond Laboratories
2800 Powder Mill Road
Adelphi, MD 20783
ATTN DRXDO-EM R. Bostak
ATTN DRXDO-RC Robert B. Oswald, Jr.
ATTN DRXDO-EM J. W. Beilfuss
ATTN DRXDO-EM Robert E. McCoskey
ATTN DRXDO-NP Francis N. Wimenitz
ATTN DRXDO-RBG Joseph Halpin
ATTN DRXDO-RB Joseph R. Miletta
ATTN DRXDO-TI Tech Lib

Commanding Officer
Night Vision Laboratory
U.S. Army Electronics Command
Fort Belvoir, VA 22060
ATTN Capt. Allan S. Parker

Commander
Picatinny Arsenal
Dover, NJ 07801
ATTN SMUPA-ND-D-E
ATTN SMUPA-ND-W

Commander
Redstone Scientific Information Ctr
U.S. Army Missile Command
Redstone Arsenal, AL 35809
ATTN Chief, Documents (3 copies)

Secretary of the Army
Washington, D.C. 20310
ATTN ODUSA or Daniel Willard

Commander
TRASANA
White Sands Missile Range, NM 88002
ATTN ATAA-EAC Francis N. Winans

DISTRIBUTION (continued)

Chief
U.S. Army Communications Sys Agency
Fort Monmouth, NJ 07703
ATTN SCCM-AD-SV Library

Commander
U.S. Army Electronics Command
Fort Monmouth, NJ 07703
ATTN DRSEL-GG-TD W. R. Werk
ATTN DRSEL-TL-IR Edwin T. Hunter
ATTN DRSEL-PL-ENV Hans A. Bomke

Commander-in-Chief
U.S. Army Europe and Seventh Army
APO New York 09403
ATTN ODCSE-E AEAGE-PI

Commander
U.S. Army Materiel Dev & Readiness Cmd
5001 Eisenhower Avenue
Alexandria, VA 22333
ATTN DRCDE-D Lawrence Flynn

Commander
U.S. Army Missile Command
Redstone Arsenal, AL 35809
ATTN DRCPM-PE-EA Wallace O. Wagner
ATTN DRCPM-LCEX Howard H. Henriksen
ATTN DRCPM-MDTI Capt. Joe A. Sims
ATTN DRSMI-RGD Victor W. Ruwe
ATTN AMSI-RGP Victor W. Ruwe

Commander
U.S. Army Mobility Equip R&D Ctr
Fort Belvoir, VA 22060
ATTN STSFB-MW John W. Bond, Jr.
ATTN AMSEL-NV-SD J. H. Carter

Chief
U.S. Army Nuc and Chemical Surety Gp
Bldg. 2073, North Area
Ft. Belvoir, VA 22060
ATTN MOSG-ND Maj. Sidney W. Winslow

Commander
U.S. Army Nuclear Agency
Fort Bliss, TX 79916
ATTN ATCN-W LTC Leonard A. Sluga

Commander
U.S. Army Test and Evaluation Comd
Aberdeen Proving Ground, MD 21005
ATTN DRSTE-EL Richard I. Kolchin
ATTN DRSTE-NB Russell R. Galasso

Commander
White Sands Missile Range
White Sands Missile Range, NM 88002
ATTN STEWS-TE-NT Marvin P. Squires
ATTN Nuclear Effects Lab Ted F. Leura, Jr.

Commander
Naval Electronic Systems Command
Naval Electronic Systems Cmd Hqs
Washington, D.C. 20360
ATTN CODE 50451
ATTN ELEX 05323 Cleveland F. Watkins
ATTN CODE 504511 Charles R. Suman
ATTN PME 117-21
ATTN CODE 5032 Charles W. Neill

Director
Naval Research Laboratory
Washington, D.C. 20375
ATTN CODE 2627 Doris R. Folen
ATTN CODE 6601 E. Wolicki
ATTN CODE 5216 Harold L. Hughes
ATTN CODE 5210 John E. Davey
ATTN CODE 6620 Bruce Faraday
ATTN CODE 6627 Neal Wilsey

Commander
Naval Sea Systems Command
Navy Department
Washington, D.C. 20362
ATTN SEA-9931 Samuel A. Barham
ATTN SEA-9931 Riley B. Lane

Commander
Naval Surface Weapons Center
White Oak, Silver Spring, MD 20910
ATTN CODE WX21 Tech Lib
ATTN CODE WA50 John H. Malloy
ATTN CODE 244
ATTN CODE 431 Edwin B. Dean
ATTN CODE WA501 Navy Nuc Prgms Off
ATTN CODE WA52 Fred Warnock

Commander
Naval Weapons Center
China Lake, CA 93555
ATTN CODE 533 Tech Lib

Commanding Officer
Naval Weapons Support Center
Crane, IN 47522
ATTN CODE 3073 James Ramsey
ATTN CODE 3073 Joseph A. Munarin
ATTN CODE 3073 Ron Pease

Director
Strategic Systems Project Office
Navy Department
Washington, D.C. 20376
ATTN NSP-27331 Phil Spector
ATTN NSP-2342 Richard L. Coleman
ATTN NSP-230 David Gold
ATTN SP 2701 John W. Pitsenberger

DISTRIBUTION (continued)

Director
Office of Naval Research
800 N. Quincy Street
Arlington, VA 22217
ATTN 220 David Lewis

AF Aero-Propulsion Laboratory, AFSC
Wright-Patterson AFB, OH 45433
ATTN POE-2 Joseph F. Wise

AF Institute of Technology, AU
Wright-Patterson AFB, OH 45433
ATTN ENP Charles J. Bridgman

AF Materials Laboratory, AFSC
Wright-Patterson AFB, OH 45433
ATTN LTE

AF Weapons Laboratory, AFSC
Kirtland AFB, NM 87117
ATTN ELP TREE Section
ATTN ELA
ATTN SAS
ATTN ELP Capt. John G. Tucker
ATTN SAT
ATTN SAB
ATTN ELPT John Mullis
ATTN ELPT David Ferry

AFTAC
Patrick AFB, FL 32925
ATTN TFS Maj. Marion F. Schneider

Commander
ASD
Wright-Patterson AFB, OH 45433
ATTN ASD-YH-EX LTC Robert Leverette

Headquarters
Electronic Systems Division (AFSC)
Hanscom AFB, MA 01731
ATTN DCD/SATIN IV
ATTN YSEV
ATTN YWET

Commander
Foreign Technology Division, AFSC
Wright-Patterson AFB, OH 45433
ATTN ETET Capt. Richard C. Husemann

Commander
Rome Air Development Center, AFSC
Griffiss AFB, NY 13440
ATTN RBRAC I. L. Krulac
ATTN RBRP Jack S. Smith
ATTN RBRP Clyde Lane
ATTN RBRP Joseph Brauer

SAMSO/DY
Post Office Box 93960
Worldway Postal Center
Los Angeles, CA 90009
ATTN DYS Maj. Larry A. Darda
ATTN AWSR Lt. Col. Cornelius H. McGuiness

SAMSO/IN
Post Office Box 92960
Worldway Postal Center
Los Angeles, CA 90009
ATTN IND I. J. Judy

SAMSO/MN
Norton AFB, CA 92409
ATTN MNNG Capt. David J. Strobel
ATTN MNNG
ATTN MNNH

SAMSO/RS
Post Office Box 92960
Worldway Postal Center
Los Angeles, CA 90009
ATTN RSSE LTC Kenneth L. Gilbert

SAMSO/SK
Post Office Box 92960
Worldway Postal Center
Los Angeles, CA 90009
ATTN SKF Peter H. Stadler

Commander-in-Chief
Strategic Air Command
Offutt AFB, NB 68113
ATTN XPFS Maj. Brian G. Stephan
ATTN NRI-STINFO Library

University of California
Lawrence Livermore Laboratory
P.O. Box 808
Livermore, CA 94550
ATTN Tech Info Dept L-3
ATTN Lawrence Cleland L-156
ATTN Hans Kruger L-96
ATTN Joseph E. Keller, Jr. L-125

Los Alamos Scientific Laboratory
P.O. Box 1663
Los Alamos, NM 87545
ATTN Doc. Cont. for J. Arthur Freed

Sandia Laboratories
P.O. Box 5800
Albuquerque, NM 87115
ATTN DOC CON for 3141 Sandia Rpt Coll
ATTN DOC CON for Org 2110 J. A. Hood
ATTN DOC CON for Org 1933 F. N. Coppage

DISTRIBUTION (continued)

Department of Commerce
National Bureau of Standards
Washington, D.C. 20234
ATTN Judson C. French, A357 Tech
ATTN W. M. Bullis, A355 Tech
ATTN K. F. Galloway, A327 Tech

Aerojet Electro-Systems Co Div
Aerojet-General Corp
P.O. Box 296
Azusa, CA 91702
ATTN Thomas D. Hanscome

Aeronutronic Ford Corporation
Aerospace & Communications Ops
Aeronutronic Div
Fort & Jamboree Roads
Newport Beach, CA 92663
ATTN Tech Info Section
ATTN Ken C. Attinger

Aeronutronic Ford Corporation
Western Development Laboratories Div
3939 Fabian Way
Palo Alto, CA 94303
ATTN Samuel R. Crawford MS 531

Aerospace Corp
P.O. Box 92957
Los Angeles, CA 90009
ATTN Irving M. Garfunkel
ATTN J. Benveniste
ATTN Julian Reinheimer
ATTN S. P. Bower
ATTN W. Willis

AVCO Research & Systems Group
201 Lowell Street
Wilmington, MA 01887
ATTN Research Lib A830, Rm 7201

The BDM Corp
1920 Aline Ave
Vienna, VA 21180
ATTN T. H. Neighbors

The Bendix Corp
Communication Division
East Joppa Road - Towson
Baltimore, MD 21204
ATTN Document Control

The Bendix Corp
Research Laboratories Div
Bendix Center
Southfield, MI 48076
ATTN Max Frank
ATTN Mgr Prgm Dev Donald J. Niehaus

The Bendix Corp
Navigation and Control Div
Teterboro, NJ 07608
ATTN George Gartner

The Boeing Company
P.O. Box 3707
Seattle, WA 98124
ATTN David L. Dye MS 87-75
ATTN Aerospace Library
ATTN Howard W. Wicklein MS 17-11
ATTN Robert S. Caldwell 2R-00
ATTN Carl Rosenberg 2R-00
ATTN Itsu Arimura 2R-00

Booz-Allen and Hamilton, Inc.
106 Apple Street
New Shrewsbury, NJ 07724
ATTN Raymond J. Chrisner

California Inst. of Tech.
Jet Propulsion Lab
4800 Oak Park Grove
Pasadena, CA 91103
ATTN J. Bryden
ATTN A. G. Stanley

Charles Start Draper Laboratory, Inc.
68 Albany Street
Cambridge, MA 02139
ATTN Kenneth Fertig

Computer Sciences Corp
201 La Veta Drive, N.E.
Albuquerque, NM 87108
ATTN Richard H. Dickhaut

Cutler-Hammer, Inc.
AIL Div
Comac Road
Deer Park, NJ 11729
ATTN Central Tech Files Anne Anthony

The Dikewood Corp
1009 Bradbury Drive, S.E.
University Research Park
Albuquerque, NM 87106
ATTN L. Wayne Davis

E-Systems, Inc.
Greenville Div
P.O. Box 1056
Greenville, TX 75401
ATTN Library 8-50100

Effects Technology, Inc.
5383 Hollister Avenue
Santa Barbara, CA 93111
ATTN Edward John Steele

DISTRIBUTION (continued)

Fairchild Camera and Instrument Corp
464 Ellis Street
Mountain View, CA 94040
ATTN Sec Dept for 2-233 David K. Myers

Fairchild Industries, Inc.
Sherman Fairchild Technology Ctr
20301 Century Boulevard
Germantown, MD 20767
ATTN Mgr Config Data & Standards

Garrett Corp
P.O. Box 92248
Los Angeles, CA 90009
ATTN Robert E. Weir Dept 93-9

General Dynamics Corp
Electronics Div Orlando Operations
P.O. Box 2566
Orlando, FL 32802
ATTN D. W. Coleman

General Electric Company
Space Division
Valley Forge Space Center
Goddard Blvd King of Prussia
P.O. Box 8555
Philadelphia, PA 19101
ATTN Larry I. Chasen
ATTN John L. Andrews
ATTN Joseph C. Peden VFSC, Rm 4230M

General Electric Company
Re-entry & Environmental Systems Div
P.O. Box 7722
3198 Chestnut Street
Philadelphia, PA 19101
ATTN John W. Palchefskey Jr.
ATTN Robert V. Benedict

General Electric Company
Ordnance Systems
100 Plastics Avenue
Pittsfield, MA 01201
ATTN Joseph J. Reidl

General Electric Company
Tempo-Center for Advanced Studies
816 State Street (P.O. Drwr QQ)
Santa Barbara, CA 93102
ATTN M. Espig
ATTN DASIAC
ATTN Royden R. Rutherford

General Electric Company
P.O. Box 1122
Syracuse, NY 13201
ATTN CSP O-7 L. H. Dee

General Electric Company
Aircraft Engine Group
Evendale Plant
Cincinnati, OH 45215
ATTN John A. Ellerhorst E 2

General Electric Company
Aerospace Electronics Systems
French Road
Utica, NY 13503
ATTN W. J. Patterson Drop 233
ATTN Charles M. Hewison Drop 624

General Electric Company - Tempo
ATTN: DASIAC
C/O Defense Nuclear Agency
Washington, D.C. 20305
ATTN William Alfonte

Georgia Institute of Technology
Georgia Tech Research Inst
Atlanta, GA 30332
ATTN R. Curry

Grumman Aerospace Corp
South Oyster Bay Road
Bethpage, NY 11714
ATTN Jerry Rogers Dept 533

GTE Sylvania, Inc.
Electronics Systems Grp - Eastern Div
77 A Street
Needham, MA 02194
ATTN James A. Waldon
ATTN Charles A. Thornhill Librarian
ATTN Leonard L. Blaisdell

GTE Sylvania, Inc.
189 B Street
Needham Heights, MA 02194
ATTN H & V Group Mario A. Nurefora
ATTN Herbert A. Ullman

Gulton Industries, Inc.
Engineered Magnetics Division
13041 Cerise Avenue
Hawthorne, CA 90250
ATTN Engnmagnetics Div

Harris Corp
Harris Semiconductor Div
P.O. Box 883
Melbourne, FL 32901
ATTN Wayne E. Abare MS 16-111
ATTN Carl F. Davis MS 17-220
ATTN T. L. Clark MS 4040

DISTRIBUTION (continued)

Hazeltine Corp
Pulaski Road
Green Lawn, NY 11740
ATTN Tech Info Ctr M. Waite

Honeywell Inc.
Government and Aeronautical
Products Division
2600 Ridgeway Parkway
Minneapolis, MN 55413
ATTN Ronald R. Johnson A1622

Honeywell Inc.
Aerospace Division
13350 U.S. Highway 19
St. Petersburg, FL 33733
ATTN M.S. 725-J Stacey H. Graff
ATTN Harrison H. Noble M.S. 725-5A

Honeywell Inc.
Radiation Center
2 Forbes Road
Lexington, MA 02173
ATTN Technical Library

Hughes Aircraft Company
Centinela and Teale
Culver City, CA 90230
ATTN John B. Singletary MS 6-D133
ATTN Billy W. Campbell MS 6-E-110
ATTN Kenneth R. Walker MS D157

Hughes Aircraft Company
Space Systems Div
P.O. Box 92919
Los Angeles, CA 90009
ATTN Edward C. Smith MS A620
ATTN William W. Scott MS A1080

IBM Corp
Route 17C
Owego, NY 13827
ATTN Frank Frankovsky

IIT Research Institute
10 West 35th Street
Chicago, IL 60616
ATTN Irving N. Mindel

Intl Tel & Telegraph Corp.
500 Washington Avenue
Nutley, NJ 07110
ATTN Alexander T. Richardson

IRT Corp
P.O. Box 81087
San Diego, CA 92138
ATTN R. L. Mertz
ATTN Ralph H. Stahl
ATTN Leo D. Cotter
ATTN MDC
ATTN John W. Harrity
ATTN J. L. Azarewicz

JAYCOR
205 S. Whiting Street, Suite 500
Alexandria, VA 22304
ATTN Robert Sullivan
ATTN Catherine Turesko

Johns Hopkins University
Applied Physics Laboratory
Johns Hopkins Road
Laurel, MD 20810
ATTN Peter E. Partridge

Kaman Sciences Corp
P.O. Box 7463
Colorado Springs, CO 80933
ATTN Albert P. Bridges
ATTN Donald H. Bryce
ATTN Jerry I. Lubell

Litton Systems, Inc.
Guidance & Control Systems Div
5500 Canoga Avenue
Woodland Hills, CA 91364
ATTN Val J. Ashby MS 67
ATTN John P. Retzler

Lockheed Missiles & Space Co., Inc.
P.O. Box 504
Sunnyvale, CA 94088
ATTN Benjamin T. Kimura Dept 81-14
ATTN Edwin A. Smith Dept. 85-85
ATTN Dept 81-01 G. H. Morris
ATTN L. Rossi Dept 81-64
ATTN Dept 85-85 Samuel I. Taimuty

Lockheed Missiles and Space Company
3251 Hanover Street
Palo Alto, CA 94304
ATTN Tech Info Ctr D/Col1
ATTN John Crowley

LTV Aerospace Corp
Vought Systems Division
P.O. Box 6267
Dallas, TX 75222
ATTN Technical Data Center

DISTRIBUTION (continued)

LTV Aerospace Corp
Michigan Division
P.O. Box 909
Warren, MI 48090
ATTN Tech Lib

M.I.T. Lincoln Laboratory
P.O. Box 73
Lexington, MA 02173
ATTN Leona Loughlin Librarian A-082

Martin Marietta Aerospace
Orlando Division
P.O. Box 5837
Orlando, FL 32805
ATTN Mona C. Griffith Lib MP-30
ATTN Jack M. Ashford MP-537
ATTN William W. Mras MP-413
ATTN Richard Gaynor

McDonnell Douglas Corp
P.O. Box 516
St. Louis, MO 63166
ATTN Tech Lib
ATTN Tom Ender

Mission Research Corp
735 State Street
Santa Barbara, CA 93101
ATTN William C. Hart

Mission Research Corp-La Jolla
1150 Silverado Street
P.O. Box 1209
La Jolla, CA 92038
ATTN V. A. J. Van Lint
ATTN James Raymond

National Academy of Sciences
ATTN: National Materials Advisory Board
2101 Constitution Avenue
Washington, D.C. 20418
ATTN R. S. Shane Nat Materials Advsy

Northrop Corp
Electronic Div
1 Research Park
Palos Verdes Peninsula, CA 90273
ATTN Vincent R. Demartino
ATTN Boyce T. Ahlport

Northrop Corp
Northrop Research and Technology Ctr
3401 West Broadway
Hawthorne, CA 90250
ATTN Orlie L. Curtis, Jr.
ATTN J. R. Srouer
ATTN David N. Pocock

Palisades Inst. for Rsch Services, Inc.
201 Varick Street
New York, NY 10014
ATTN Records Supervisor

Power Physics Corp
542 Industrial Way West
P.O. Box 626
Eatontown, NJ 07724
ATTN Mitchell Baker

R & D Associates
P.O. Box 9695
Marina Del Rey, CA 90291
ATTN S. Clay Rogers

Raytheon Company
Hartwell Road
Bedford, MA 01730
ATTN Gajanan H. Joshi Radar Sys Lab

Raytheon Company
528 Boston Post Road
Sudbury, MA 01776
ATTN Harold L. Flescher

RCA Corporation
Government & Commercial Systems
ASTRO Electronics Div
P.O. Box 800, Locust Corner
Princeton, NJ 08540
ATTN George J. Brucker

RCA Corporation
David Sarnoff Research Ctr
W. Windsor Twp
201 Washington Road, P.O. Box 432
Princeton, NJ 08540
ATTN K. H. Zaininger

RCA Corporation
Camden Complex
Front & Cooper Sts
Camden, NJ 08012
ATTN E. Van Keuren 13-5-2

Research Triangle Inst
P.O. Box 12194
Research Triangle Park, NC 27709
ATTN Eng Div Mayrant Simons Jr.

Rockwell International Corp
3370 Miraloma Ave
Anaheim, CA 92803
ATTN N. J. Rudie FA53
ATTN James E. Bell HA10
ATTN George C. Messenger FB61
ATTN K. F. Hull
ATTN L. Apodaca FA53

DISTRIBUTION (continued)

Rockwell International Corporation
5701 West Imperial Highway
Los Angeles, CA 90009
ATTN T. B. Yates

Rockwell International Corporation
Electronics Operations
Collins Radio Group
5225 C Avenue NE
Cedar Rapids, IA 52406
ATTN Alan A. Langenfeld
ATTN Dennis Sutherland
ATTN Mildred A. Blair

Sanders Associates, Inc.
95 Canal Street
Nashua, NH 03060
ATTN Moe L. Aitel NCA 1-3236

Science Applications, Inc.
P.O. Box 2351
La Jolla, CA 92038
ATTN Larry Scott
ATTN J. Robert Beyster
ATTN Victor Orphan

Simulation Physics, Inc.
41 "B" Street
Burlington, MA 01803
ATTN Roger G. Little

The Singer Company (Data Systems)
150 Totowa Road
Wayne, NJ 07470
ATTN Tech Info Ctr

Sperry Flight Systems Div
Sperry Rand Corp
P.O. Box 21111
Phoenix, AZ 85036
ATTN D. Andrew Schow

Sperry Rand Corp
Univac Div
Defense Systems Div
P.O. Box 3525 Mail Station 1931
St. Paul, MN 55101
ATTN James A. Inda MS 41T25

Sperry Rand Corp
Sperry Div
Sperry Gyroscope Div
Sperry Systems Management Div
Marcus Avenue
Great Neck, NY 11020
ATTN Paul Marraffino
ATTN Charles L. Craig EV

Stanford Research Inst
333 Ravenswood Ave
Menlo Park, CA 94025
ATTN Philip J. Dolan

Sundstrand Corp
4751 Harrison Avenue
Rockford, IL 61101
ATTN Curtis B. White

Texas Instruments, Inc.
P.O. Box 5474
Dallas, TX 75222
ATTN Donald J. Manus MS 72

TRW Systems Group
One Space Park
Redondo Beach, CA 90278
ATTN H. H. Holloway R1-2036
ATTN O. E. Adams R1-1144 (2 copies)
ATTN R. K. Plebuch R1-2078 (2 copies)
ATTN Tech Info Center/S-1930
ATTN Robert M. Webb R1-2410

TRW Systems Group
San Bernardino Operations
P.O. Box 1310
San Bernardino, CA 92402
ATTN F. B. Fay 527/710
ATTN Earl W. Allen

TRW Systems Group
P.O. Box 368
Clearfield, UT 84015
ATTN Donald W. Pugsley

United Technologies Corp
Hamilton Standard Div
Bradley International Airport
Windsor Locks, CT 06069
ATTN Raymond G. Giguere

Westinghouse Electric Corp
Defense and Electronic Systems Ctr
P.O. Box 1693
Friendship International Airport
Baltimore, MD 21203
ATTN Henry P. Kalapaca MS 3525

U.S. DEPT. OF COMM. BIBLIOGRAPHIC DATA SHEET		1. PUBLICATION OR REPORT NO. NBSIR 77-1231	2. Gov't Accession No.	3. Recipient's Accession No.
4. TITLE AND SUBTITLE Measurement of Transistor Collector-Emitter Saturation Voltage			5. Publication Date June 1977	
			6. Performing Organization Code	
7. AUTHOR(S) Kathryn Leedy			8. Performing Organ. Report No. NBSIR-1231	
9. PERFORMING ORGANIZATION NAME AND ADDRESS NATIONAL BUREAU OF STANDARDS DEPARTMENT OF COMMERCE WASHINGTON, D.C. 20234			10. Project/Task/Work Unit No. Z99QAXTD072 W.U.66	
			11. Contract/Grant No. DNA IACRO 77-809	
12. Sponsoring Organization Name and Complete Address (Street, City, State, ZIP) Defense Nuclear Agency Washington, DC 20305			13. Type of Report & Period Covered Final July 1976 to Jan. 1977	
			14. Sponsoring Agency Code	
15. SUPPLEMENTARY NOTES				
16. ABSTRACT (A 200-word or less factual summary of most significant information. If document includes a significant bibliography or literature survey, mention it here.) <p>This report presents a detailed method for the measurement of collector-emitter saturation voltage. The method which is included in the Appendix is proposed for standardization. The report also contains a description of the laboratory confirmation of the method and a discussion of the precautions to be taken to assure repeatability of the measurement. Emphasized is the necessity to determine that the conditions for saturation are met during the measurement.</p>				
17. KEY WORDS (six to twelve entries; alphabetical order; capitalize only the first letter of the first key word unless a proper name; separated by semicolons)				
18. AVAILABILITY <input checked="" type="checkbox"/> Unlimited <input type="checkbox"/> For Official Distribution. Do Not Release to NTIS <input type="checkbox"/> Order From Sup. of Doc., U.S. Government Printing Office Washington, D.C. 20402, SD Cat. No. C13 <input checked="" type="checkbox"/> Order From National Technical Information Service (NTIS) Springfield, Virginia 22151		19. SECURITY CLASS (THIS REPORT) UNCLASSIFIED 20. SECURITY CLASS (THIS PAGE) UNCLASSIFIED		21. NO. OF PAGES 54 22. Price \$4.50

