

United States
Department of
Agriculture

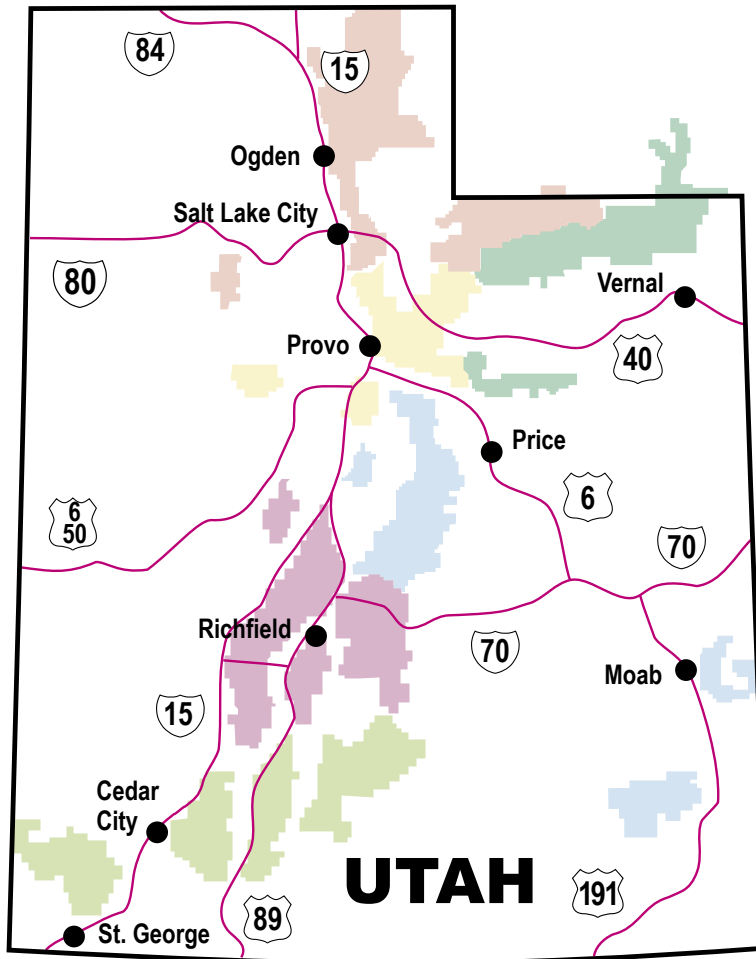
Forest
Service

Intermountain
Region

Ogden, Utah



Camping and Picnicking on the National Forests of Utah



THE NATIONAL FORESTS

**America's
Great
Outdoors**

Become a National Forest Volunteer

The Forest Service is looking for volunteers and has opportunities for almost everyone – retirees, professionals, housewives, students, and young people, as well as service clubs and organizations. If you like people and care about our country's natural resources, the Forest Service needs your time and talents.

Some volunteers work full-time for several months, while others donate a few hours a day each week, or contribute a "one time" service. Students may volunteer to earn college credits through a college-approved Intern program.

The Forest Service and the volunteer negotiate an agreement stating what responsibilities and benefits have been agreed upon. All volunteers are covered by the Federal Tort Claims Act and the Federal Worker's Compensation Act.

If you are interested in becoming a Forest Service volunteer, please contact a local Forest Service office. You may also access our volunteer directory on our web site at: www.fs.fed.us/r4/volunteer/index.html.



TREAD LIGHTLY!

I Pledge to **TREAD LIGHTLY** on public and private lands by:

- T**raveling only where motorized vehicles are permitted and never blazing my own trail.
- R**especting the rights of hikers, skiers, campers, and others to enjoy their activities undisturbed.
- E**ducating myself by obtaining travel maps and regulations from public agencies, complying with signs and barriers, and asking owners' permission to cross private property.
- A**voiding streams, lakeshores, meadows, muddy roads and trails, steep hillsides, wildlife, and livestock.
- D**riving responsibly to protect the environment and preserve opportunities to enjoy my vehicle on wild lands.



The U.S. Department of Agriculture (USDA) prohibits discrimination in all its programs and activities on the basis of race, color, national origin, gender, religion, age, disability, political beliefs, sexual orientation, or marital or family status. (Not all prohibited bases apply to all programs.) Persons with disabilities who require alternative means for communication of program information (Braille, large print, audio tape, etc.) should contact the USDA's TARGET Center at (202) 720-2600 (voice and TDD).

To file a complaint of discrimination, write USDA, Director, Office of Civil Rights, Room 326-W, Whitten Building, 1400 Independence Avenue, SW, Washington DC 20250-9410 or call (202) 720-5964 (voice and TDD). USDA is an equal opportunity provider and employer.

Wildfires:

We Can't Stop Them Without Your Help

Carelessness – Wildland "Enemy #1." Each year, the number of wildfires increase. Why? Because forest users—well meaning people—haven't been careful when fire danger is high. You can be a part of the fire prevention team by knowing a few facts, and following a few simple rules:

- Don't throw burning objects—like cigarettes or matches—from any vehicle.
- Parking over dry grass may cause a fire. Hot exhaust pipes, catalytic converters, and mufflers are as dangerous as a match.
- When you camp or walk through wildland areas, follow fire safety rules. Above all, never leave any fire until it is completely out.
- Learn the facts about fires: how they start, what conditions favor them.
- Don't start any fire when the fire danger is high.

On a hot, dry day, two seconds of carelessness could destroy trees, brush, animals, homes, and lives. IT COULD HAPPEN TO YOU . . . STOP AND THINK!



Thanks,

Use the National Recreation Reservation Service (NRRS) for some Forest Service Recreation Sites

Selected camp sites throughout the Intermountain and other Forest Service Regions are available for reservation. Campground reservations may be made by phone at 1-877-444-6777 or TDD 1-877-833-6777, or on line at www.reserveusa.com.

Over the phone, operators will either take your reservation for a specific site or help you find a site to your liking. A user fee and service charge can be made via major credit card or check.

Contact the Forest Service or NRRS for more information and to learn which facilities are included in this service.

Enjoy the Ashley National Forest

The Forest

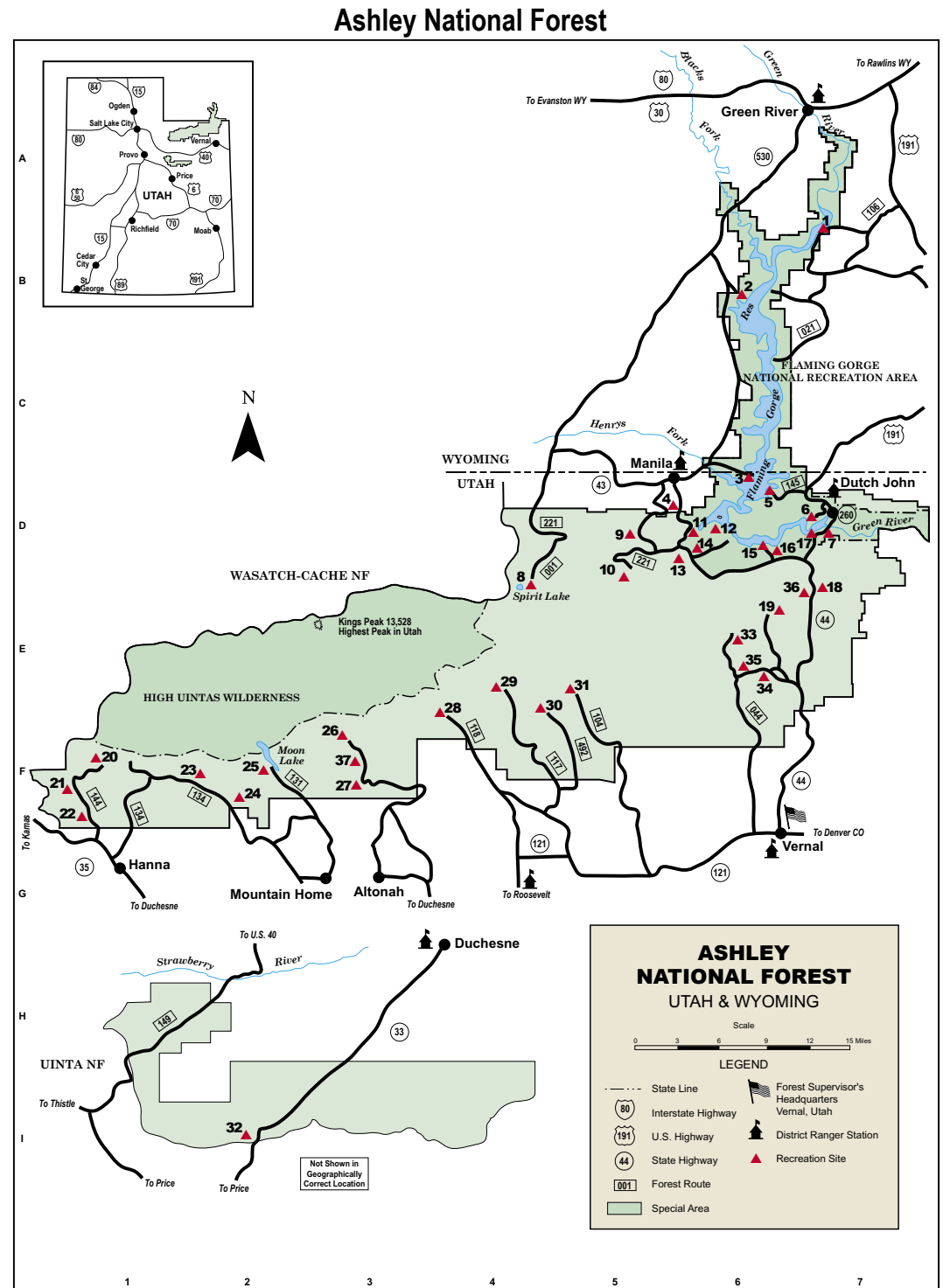
The Ashley National Forest includes 1,384,131 acres located in northeastern Utah and southwestern Wyoming. It falls into three geographical areas: the east-west range of the Uinta Mountains, the Wyoming Basin, and the Tavaputs Plateau. Forest elevations range from 6,000 to 13,500 feet.



Recreation Opportunities

There is a wide variety of recreation opportunities on the Forest including hiking and horseback riding in wilderness and back country; hunting big and small game; fishing in streams, rivers, lakes, and ponds; camping and picnicking; boating and floating; rock hounding; gathering forest products; and driving for pleasure. Scenery in the Uinta Mountains is outstanding. Major recreation attractions are the High Uintas Wilderness, Flaming Gorge National Recreation Area, Sheep Creek Canyon Geological Area, and the Flaming Gorge-Uinta National Scenic Byway.

The High Uintas Wilderness covers over 456,700 acres in the Wasatch-Cache and Ashley National Forests. Elevations range from 8,000 to 13,528 feet atop Kings Peak, the highest in Utah. The Uintas defy the trend of most mountain ranges in North America by running east-west from Colorado to the Wasatch Mountains. The Wilderness is accessible from July through September. Numerous marked trails offer backpackers and horse packers wilderness adventure ranging from moderate to



strenuous. There are numerous trailheads and campgrounds from which trips can begin. Visitors may arrange for horses, guides, and equipment with many concessionaires in the towns listed below.

Flaming Gorge National Recreation Area lies in the northeast part of the Forest. Flaming Gorge Reservoir extends almost 90 miles into Wyoming, offering great boating and fishing opportunities. Record breaking German brown trout, large lake trout, mackinaw,

and rainbow trout are regularly taken from the waters of the reservoir. The Green River below the dam is a Blue Ribbon trout stream. The Little Hole National Recreation Trail parallels the river for 7.3 miles from Flaming Gorge Dam to the Little Hole day-use area. River running this section of the Green River is another favorite pastime for visitors. Equipment is available from nearby concessionaires. The Flaming Gorge National Recreation Area is accessible throughout the year

via paved roads. Visitor centers are located at Red Canyon and Flaming Gorge Dam.

Sheep Creek Canyon Geological Area is approximately five miles south of Manila, Utah, and is part of the Flaming Gorge National Recreation Area. The spectacular canyon is filled with twisted, folded rock formations. During the first two weeks of September, kokanee salmon run from Flaming Gorge Reservoir to spawn the Sheep Creek.

As you drive the Flaming

ASHLEY NATIONAL FOREST

Recreation Site Information

Location	Name	Elevation in Feet	Season Of Use	Camping	Picnicking	Group	Drinking Water	Toilet	Holding Tank/Disposal	Visitor Information	Number of Units	Special Features	Map Location
1	FIREHOLE	6100	May-Sep	F,A,J,T,U	A,H		A	A	*		40	5,8,1,3,29	B7
2	BUCKBOARD CROSSING	6100	May-Sep	F,A,J,T,U	A,H		A	A	*		68	1,3,5,6,9,10	B6
3	LUCERNE VALLEY	6100	May-Sep	F,A,H,J,T,U	A,H	F,B,K,T,U	A	A	*		147	1,3,5,6,9,10	D6
4	CARMEL/ NAVAJO CLIFFS	6500	May-Sep	F,A,H,T,U	A,H		A	A	*		13	1,2,16,23,26	D5
5	ANTELOPE FLATS	6100	May-Sep	F,A,J,T,U	A,J	F,C,K,T,U	A	A	*		126	1,3,5,8,29	D6
6	MUSTANG RIDGE	6200	May-Oct	F,A,J,T,U	A,H,J		A	A	*		73	1,3,5,8,29	D7
7	DRIPPING SPRING	6000	Yr.round	F,A,H,J,T,U	A,H	F,A,K,T,U	A	A	*		25	1,2,7,27	D7
7	SPILLWAY	5600	May-Oct	F			A	A	*			1,2,5,7,17	D7
7	FLAMING GORGE DAM	6100	May-Oct				A	C	*			1,3,24	D7
8	SPIRIT LAKE	10,000	Jul-Sep	F,A,H,T,U	A,H		A	A	*		24	1,3,11,12,17,27	D4
9	PALISADES MEMORIAL PARK	7000	Jun-Sep		A,H		A	A	*		3	16,23,26	D5
10	BROWNE LAKE	8200	May-Sep	F,A,H,T,U	A,H		A	A	*		8	1,3,7,17	D5
11	SHEEP CREEK BAY	8600	May-Sep	F,A,H,U	H		C					1,3,5,24	D6
12	HIDEOUT CANYON	6100	May-Sep	F,A,H,J,T	A,H		A	A	*		19	1,3,8,17,20	D6
13	DEEP CREEK	7800	May-Sep	F,A,H,T,U	A,H		A	A	*		17	1,2,27	D6
14	DOWD SPRING OVERLOOK PICNIC	7600	May-Sep		A,H		A	A	*		4	17	D6
15	RED CANYON VISITOR CENTER	7400	Jun-Sep				A	B	*			17,28	D6
16	GREENS LAKE	7400	May-Sep	F,A,H,J,T,U	A,H	F,A,K,T,U	A	A	*		20	1,3,10,12,17	D6
16	CANYON RIM	7400	May-Sep	F,A,H,J,T,U	A,H		A	A	*		18	17,26,27	D6
16	GOOSENECK	6100	May-Sep	F,A,H,T			A	A	*		6	1,3,20,27	D6
16	SKULL CREEK	7600	May-Sep	F,A,H,J,T,U			A	A	*		17	2,17,27	D6
16	CEDAR SPRINGS	6100	May-Sep	B,F,J,T,U	A,H		A	A	*		21	1,3,5,6,9,10	D6
17	FIREFIGHTERS MEMORIAL	6900	Jun-Oct	F,C,H,J,T,U	A,H		C		*		94	1,3,10,12,17,28	D6
*	DUTCH JOHN DRAW	6100	May-Sep	F,A,K,T,U	A,K	F,A,K,T,U	A	A	*		1	1,3,8	D6
17	DEER RUN	6200	May-Sep	F,C,H,J,T,U	A,H		C	C	*		19	1,3,5,6,9,10,29	D6
17	ARCH DAM	6100	May-Sep	F,A,K,T,U		F,A,K,T,U	A	A	*		4	1,2,3,7,10,12	D6
18	LODGEPOLE	8100	May-Sep	F,B,J,T,U	B		A	A	*		35	27	D7
19	EAST PARK	9000	Jun-Oct	F,A,H,T,U	A,H		A	A	*		21	1,3,5,27	E6
20	IRON MINE	7200	May-Sep	F,A,T,U	A,H	F,A,H	A	A	*		26	1,2,27	F1
21	HADES	7100	May-Sep	F,A,T,U	A,H		A	A	*		17	1,2,17,27	F1
22	ASPEN	7000	May-Sep	F,A,T,U	A,H	F,A,H	A	A	*		33	1,2,16,27	F1
23	UPPER STILLWATER (SOUTH FORK)	8200	May-Sep	F,B,J,T,U	B,H	F,B,T,U,J	A	B	*		19	1,2,4,16,17,21,27	F2
24	YELLOWPINE	7600	May-Sep	F,C,T,U,J	C,H	F,J,C	A	B	*		29	1,2,19,27	F2
24	MINER'S GULCH	7800	May-Sep	F,A,H,T,U	A,H	F,A,J,T,U	A	A	*		5	1,2,27	F2
25	MOON LAKE	8100	May-Sep	F,C,T,U,J	B,H		A	B	*		57	1,3,17,21,27	F2
25	MOON LAKE GROUP AREA	8100	May-Sep		B,H	F,A,K,T,U	A	A	*		2	1,3,17,21,27	F2
26	SWIFT CREEK	8000	May-Sep	F,A,H,T,U	A,H		A	A	*		13	1,2,17,21,27	F3
27	YELLOWSTONE	7700	May-Sep	F,A,T,U	A,H	F,A,J,T,U	A	A	*		19	1,2,3,4,16,27	F3
27	BRIDGE	7700	May-Sep	A,H,T,U	A,H		A	A	*		5	1,2,27	F3
27	RESERVOIR	7900	May-Sep	F,A,H,T,U	A,H		A	A	*		5	1,2,3,4,27	F3
28	UINTA RIVER	7700	May-Sep	A,J	A,J	F,A,J,T,U	A	A	*		2	1,2,3,4,27	F4
28	UINTA CANYON	7600	May-Sep	F,A,H,T,U	A,H		A	A	*		24	1,2,16,27	F4
28	WANDIN	7700	May-Sep	F,A,H,T,U	A,H		A	A	*		8	1,2,26,27	F4
29	POLE CREEK LAKE	10,200	Jun-Sep	F,A,H,T,U	A,H		A	A	*		18	1,2,4,27	E4
30	WHITEROCKS	7500	May-Oct	F,A,H,T,U	A,H	F,A,H,T,U	A	A	*		21	1,2,16,27	F4
31	PARADISE PARK	10,000	Jun-Oct	F,A,H,T,U	A,H		A	A	*		15	1,3,17,27	E5
32	AVINTAQUIN	8800	Jun-Sep	F,A,H,T,U	A,H		A	A	*		27	26,27	I2
33	OAKS PARK	9200	Jun-Oct	F,A,H,T,U	A,H		A	A	*		11	1,3,27	E6
34	IRON SPRINGS	8000	Jun-Oct	F,A,K	A,K	F,A,K	A	A	*		2	27	E6
35	KALER HOLLOW	8900	Jun-Oct	A,H,T	A,H		A	A	*		4	2,4	E6
36	RED SPRINGS	8100	May-Oct	F,A,H,T,U	A,H		A	A	*		13	27	E7
37	RIVERVIEW	7900	May-Sep	F,A,H,T,U	A,H		A	A	*		19	1,2,21,27	F3

KEY TO RECREATION SITE INFORMATION

Fees (Camping, Picnicking and Group):
F = Fee Charged

Modification of Facilities to Assist Users With Physical Impairments:

- A = Facilities not modified.
- B = Limited modification - At least one unit has been modified, but modification may not be sufficient to be usable by many individuals who are confined to a wheelchair.
- C = Significant modification - At least one unit has been modified to allow use by most individuals who are confined to a wheelchair.

Reservations (Camping, Picnicking, Group):

- H = Non-reservation area.
- J = Reservation accepted/recommended.
- K = Reservation required.
- L = One or more units reserved until 6 pm for handicapped use.

Type of Facilities Available (Camping):

- T = Tents
- U = Trailers

Special Features Located Within One Mile of the Site:

- 1 = Fishing
- 2 = River or stream
- 3 = Reservoir or lake (powerboats permitted)
- 4 = Reservoir or lake (no powerboats)
- 5 = Boat ramp
- 6 = Boat rental
- 7 = Floating, rafting, kayaking
- 8 = Swimming
- 9 = Marina
- 10 = Store
- 11 = Resort
- 12 = Restaurant
- 13 = Museum
- 14 = Cave
- 15 = Ghost town
- 16 = Canyon
- 17 = Trailhead
- 18 = Historic trail
- 19 = Nature trail
- 20 = Accessible by trail or boat only
- 21 = Wilderness access
- 22 = Waterfalls
- 23 = Geological area
- 24 = Handicapped facilities
- 25 = Evening program
- 26 = Scenic drive
- 27 = Timbered setting
- 28 = Open setting
- 29 = Showers, open to non-campers (\$2.00)

FOR MORE INFORMATION: If you would like more information or detailed maps of the Ashley National Forest, please contact one of the following:

FOREST SUPERVISOR
Ashley National Forest
355 North Vernal Avenue
Vernal UT 84078
(435) 789-1181

Duchesne/Roosevelt Ranger Districts
85 West Main
PO Box 981
Duchesne UT 84021
(435) 738-2482
Roosevelt Office
(435) 722-5018

Vernal Ranger District
355 North Vernal Avenue
Vernal UT 84078
(435) 789-1181

Flaming Gorge National Recreation Area
Intersection Highways 43 & 44
PO Box 279
Manila UT 84046
(435) 784-3445

Ashley NF web site: www.fs.fed.us/r4/ashley

Gorge-Uintas National Scenic Byway, you pass through one of the richest areas for wildlife and their fossilized ancestors in the western United States. Visitors stopping in at any of the Byway's orientation centers, overlooks, or nature trails, can explore an unusual diversity of ecosystems both past and present.

Lodging is available in some of the canyons along the south slope of the Uinta Mountains and at the Flaming Gorge National Recreation Area. Supplies and services, including restaurants, lodging, gas, and groceries, can be found in the towns of Duchesne, Roosevelt, Vernal, Manila, Dutch John, Green River, and Rock Springs, Utah.



Welcome to the Dixie National Forest

The Forest

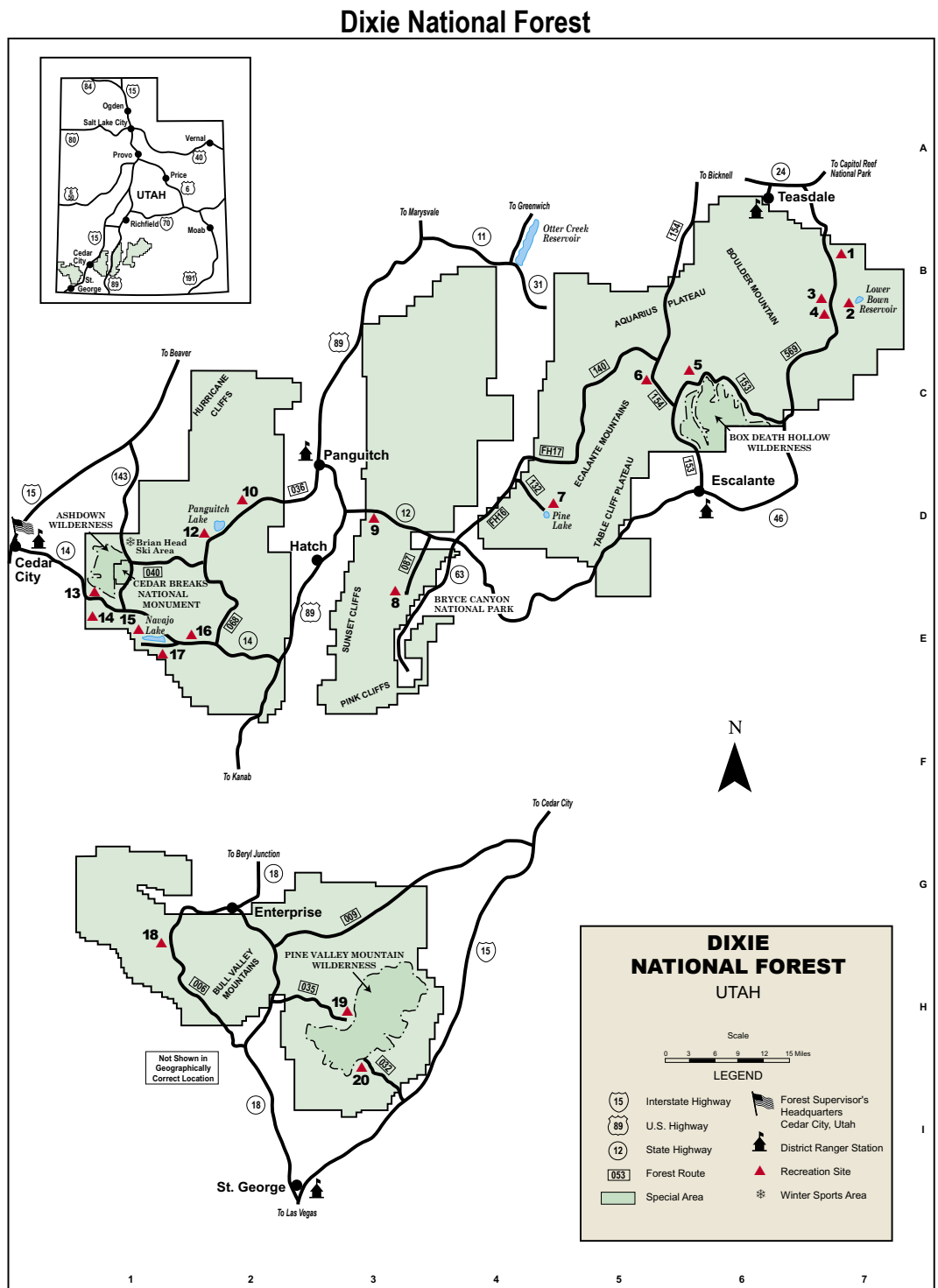
The Dixie National Forest occupies almost two million acres and stretches for about 170 miles across southern Utah. The largest National Forest in Utah, it straddles the divide between the Great Basin and the Colorado River. Forest elevations range from 3,100 feet near St. George, Utah, to 11,332 feet at Blue Bell Knoll on Boulder Mountain. The southern rim of the Great Basin, near the Colorado River, provides spectacular scenery. Colorado River canyons are made up of many-colored cliffs and steep-walled gorges.

The Forest is divided into four geographic areas: High-altitude forests in gently rolling hills characterize the Markagunt, Paunsaugunt and Aquarius Plateaus. Boulder Mountain, one of the largest high-elevation plateaus in the United States, is dotted with hundreds of small lakes 10,000 to 11,000 feet above sea level.

Forest precipitation ranges from 10 inches in the lower elevations to more than 40 inches per year near Brian Head Peak, which is 11,307 feet above sea level. At higher elevations, most of the annual precipitation falls as snow. Thunderstorms are common during July and August and often produce heavy rains. In some areas, August is the wettest month of the year.

Temperature extremes are impressive. Summer temperatures can exceed 100 degrees Fahrenheit near St. George, while winter lows can fall below -30 degrees Fahrenheit on the plateau tops.

Vegetation on the Forest grades from sparse, desert-type plants at lower elevations to stands of low-growing pinyon pine and juniper dominating mid-elevations. At higher elevations, aspen and conifers such as pine, spruce, and fir predominate.



Recreation Opportunities

Three National Parks and two National Monuments are adjacent to the Dixie National Forest. The scenic beauty for which these areas were set aside prevails over much of the Forest. Red sandstone formations of Red Canyon rival those of Bryce Canyon National Park. Hells Backbone Bridge and the view into Death Hollow are breathtaking.

From the top of Powell Point, it is possible to see for miles into three different states. Boulder Mountain, with its many lakes, provides opportunities for hiking, fishing, and viewing extraordinary scenery.

Forest visitors can enjoy camping, hunting, mountain biking, canoeing, viewing scenery, hiking, horseback riding, and fishing in primitive settings. Others, who prefer more developed areas and less primitive conditions, can enjoy vehicle-based activities such as camping,

picnicking, riding OHVs, gathering forest products, viewing interpretive exhibits, viewing scenery, pleasure driving, swimming and fishing. Opportunities for winter sports, such as sledding, skiing, cross-country skiing, and snowmobiling are available in many areas.

DIXIE NATIONAL FOREST

Recreation Site Information

Location	Name	Elevation in Feet	Season Of Use	Camping	Picnicking	Group	Drinking Water	Toilet	Holding Tank/Disposal	Visitor Information	Number of Units	Special Features	Map Location
1	SINGLE TREE	8600	May-Sep	F,B,J,T,U		F,A,K	A	B			33	26,27	B7
2	LOWER BOWNS	7400	May-Oct	A,H,T				A			4	1,4,7,28	B7
3	PLEASANT CREEK	8700	May-Sep	F,A,H,T,U			A	B			19	26,27	B7
4	OAK CREEK	8800	May-Sep	F,A,H,T,U			A	B			9	26,27	B7
5	BLUE SPRUCE	7800	Jun-Sep	F,A,H,T			A	A			6	1,2,17,21,27	C6
6	POSY LAKE	8200	Jun-Sep	F,A,H,J,T,U		F,A,K	A	B			19	1,4,7,5,17,27	C5
7	PINE LAKE	7700	Jun-Sep	F,A,H,J,T,U		F,B,K	A	A			30	1,3,17,26,27	D5
8	KINGS CREEK	8000	Jun-Sep	F,C,H,T,U	F,B,H	B,F,K	B	B	*		38	1,3,5,17,19,24,27	E3
9	RED CANYON	7400	May-Oct	F,B,H,T,U	F,B,H	B,H,F	B	B	*		39	16,17,19,23,24,27	D3
10	WHITE BRIDGE	7900	Jun-Sep	F,B,J,T,U			B	B	*		29	1,2,27	D2
12	PANGUITCH LAKE NORTH	8400	Jun-Sep	F,B,J,T,U		F,B,K	A	B	*		49	1,3,5,6,10,25,27	D2
12	PANGUITCH LAKE SOUTH	8400	Jun-Sep	F,A,H,T			A	A	*		18	1,3,5,6,10,25,27	D2
13	CEDAR CANYON	8100	Jun-Sep	J,F,A,T,U	A,H		A	A			19	2,27	E1
14	DEER HAVEN	8900	Jun-Sep	F,A,K,T		F,A,K,T	A	C			27		E1
15	TE-AH	9200	Jun-Sep	F,B,J,T,U			A	B	*		42	1,3,6,8,9,10,27	E1
16	DUCK CREEK	8600	Jun-Sep	F,B,J,T,U		F,B,K	B	C			96	1,2,4,27	E2
17	NAVAJO LAKE	9200	Jun-Sep	F,B,H,T,U			B	C			28	1,3,5,6,8,9,10,27	E1
17	SPRUCES	9200	Jun-Sep	F,B,H,T,U			B	B			26	1,3,5,6,8,9,10,27	E1
17	CASCADE FALL NAT. REC. TR.	9100	Jun-Oct	A								17,22,28	E1
18	HONEYCOMB ROCKS	5700	May-Oct	F,B,H,T,U	B,H		A	B			18	1,3,5,28	G1
19	BLUE SPRINGS	6800	May-Oct	F,B,J,T,U			A	A			20	1,2,4,17,21,27	H3
19	JUNIPER PARK	6800	May-Oct	F,B,H,T,U			A	A			22	1,2,4,27	H3
19	PINES	6800	May-Oct	F,B,H,T,U			A	A			13	1,2,4,17,21,27	H3
19	PINES (GROUP AREA)	6800	May-Oct		B,K	B,F,K	B	B				1,2,4,17,21,27	H3
19	PONDEROSA	6800	May-Oct			B,K	B,F,K	B	B			1,2,4,17,21,27	H3
19	UPPER PINES	6800	May-Oct	K,B	A,K	A,F,K	A	A			1	1,2,4,17,21,27	H3
20	OAK GROVE	6800	Jun-Oct	A,H,T	B,H		A	A			6	7,21,27	H3



KEY TO RECREATION SITE INFORMATION

Fees (Camping, Picnicking and Group):
F = Fee Charged

Modification of Facilities to Assist Users With Physical Impairments:

- A = Facilities not modified.
- B = Limited modification - At least one unit has been modified, but modification may not be sufficient to be usable by many individuals who are confined to a wheelchair.
- C = Significant modification - At least one unit has been modified to allow use by most individuals who are confined to a wheelchair.

Reservations (Camping, Picnicking, Group):

- H = Non-reservation area.
- J = Reservation accepted/recommended.
- K = Reservation required.
- L = One or more units reserved until 6 pm for handicapped use.

HP = Host present

Type of Facilities Available (Camping):

- T = Tents
- U = Trailers

Special Features Located Within One Mile of the Site:

- 1 = Fishing
- 2 = River or stream
- 3 = Reservoir or lake (powerboats permitted)
- 4 = Reservoir or lake (no powerboats)
- 5 = Boat ramp
- 6 = Boat rental
- 7 = Floating, rafting, kayaking
- 8 = Swimming
- 9 = Marina
- 10 = Store
- 11 = Resort
- 12 = Restaurant
- 13 = Museum
- 14 = Cave
- 15 = Ghost town
- 16 = Canyon
- 17 = Trailhead
- 18 = Historic trail
- 19 = Nature trail
- 20 = Accessible by trail or boat only
- 21 = Wilderness access
- 22 = Waterfalls
- 23 = Geological area
- 24 = Handicapped facilities
- 25 = Evening program
- 26 = Scenic drive
- 27 = Timbered setting
- 28 = Open setting
- 29 = Corrals

FOR MORE INFORMATION: If you would like more information or detailed maps of the Dixie National Forest, please contact one of the following:

FOREST SUPERVISOR
Dixie National Forest
1789 North Wedgewood Lane
Cedar City UT 84720
(435) 865-3700

Pine Valley Ranger District
196 East Tabernacle Street, Room 40
St. George UT 84770
(435) 652-3100

Cedar City Ranger District
1789 North Wedgewood Lane
Cedar City UT 84720
(435) 865-3200

Powell Ranger District
225 East Center Street
PO Box 80
Panguitch UT 84759
(435) 676-9300

Escalante Ranger District
Escalante Interagency Federal Bldg.
755 West Main
PO Box 246
Escalante UT 84726
(435) 826-5400

Loa/Teasdale Ranger District
138 East Main
PO Box 90
Teasdale UT 84773
(435) 425-9500

Dixie National Forest web site:
www.fs.fed.us/r4/dnf

Enjoy the
Fishlake
 National Forest

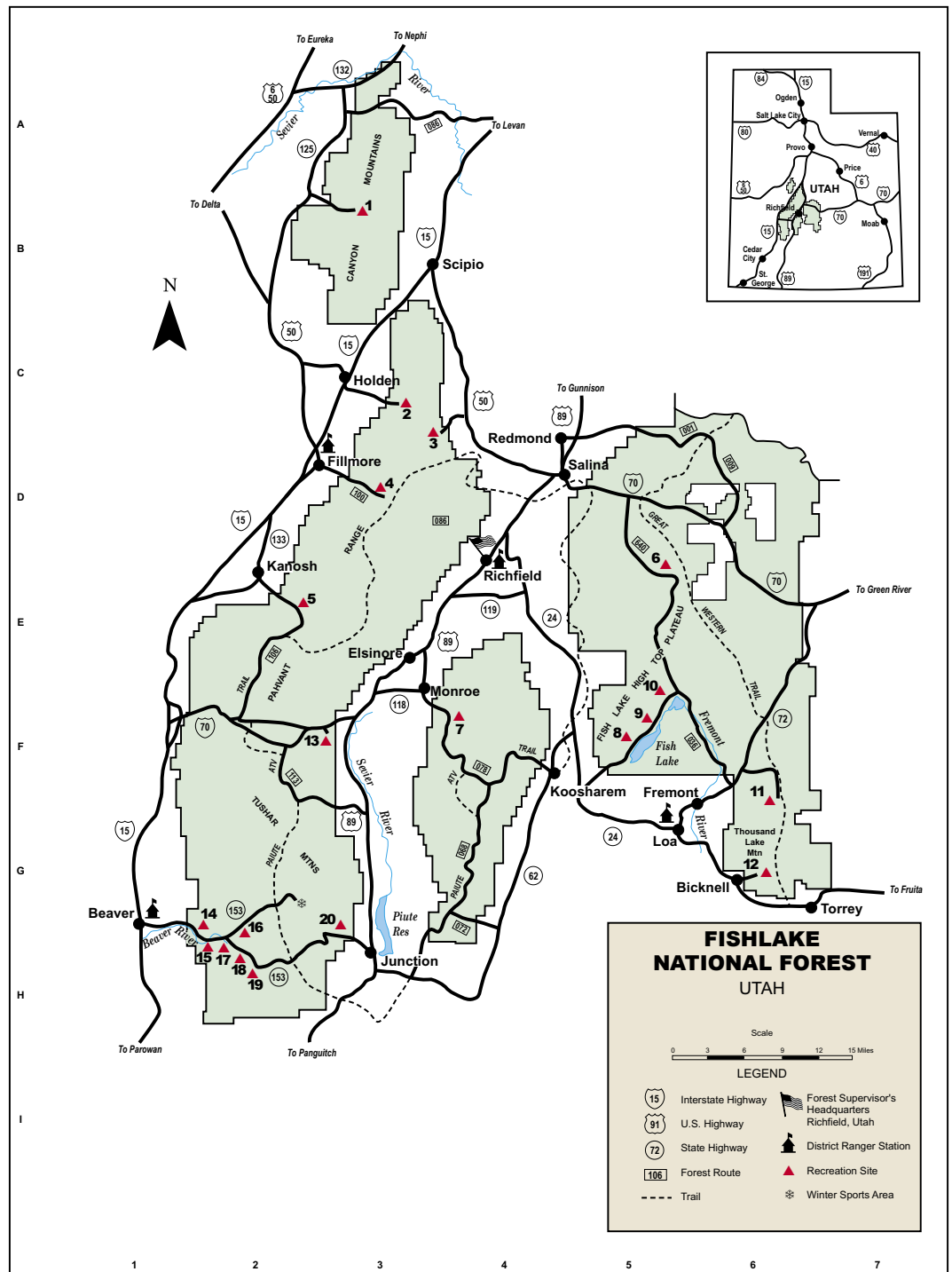
The Forest

Rising as a green oases in central Utah, the mountains and plateaus that form the Fishlake National Forest are vital resources for the intervening valleys. Water, recreation, wildlife, timber, grazing, geothermal energy, and minerals come from the Forest. Residents from surrounding areas and adjacent states visit the Forest for climatic relief in the summer and hunting in the fall.

The first unit of the Forest was reserved in 1899 by President McKinley to protect the watershed of Fish Lake and the Fremont River. In 1906 and 1907, Theodore Roosevelt established the Beaver, Fillmore and Glenwood Forest Reserves in response to petitions from local citizens. Over grazing of the mountains by transient bands of sheep was crowding out the domestic stock belonging to valley residents. Over grazing also damaged watersheds, resulting in flash floods that inundated towns at the mouths of canyons and silted in irrigation works necessary for farming the arid valleys.

The 1,461,228-acre Fishlake National Forest of today lies mainly in Beaver, Millard, Piute, Sevier, and Wayne counties. There are over 78,000 acres of private and State land within the boundaries of the Forest.

Fishlake National Forest



Recreation Opportunities

The mountains and plateaus of the Forest provide a wide variety of scenery and climatic zones. Much of the Forest's lower elevation land is covered with sagebrush, pinyon pine, and juniper trees, while red-rock desert can be found in the southeast corner. At higher elevations, meadows are interspersed with bands of aspen and conifer. Here, there are over 70 perennial streams

and about 60 lakes and reservoirs enhancing recreational experiences and providing enjoyable camping spots. Crowning the Forest is the alpine zone of the Tuslar Mountains where peaks exceed 12,000-foot elevation, and the stark terrain and wide vistas make for a visual feast.

The Fish Lake-Johnson Valley is a 13,700-acre area that houses 2,500 acres of lake and 670 acres of reservoir. Mackinaw, splake and several species of trout can be caught year-round. A full range of public services and facilities are available

from resorts at Fish Lake. The Tuslar Mountains contain several loop roads with opportunities for camping, fishing, hiking, mountain biking, and sight seeing. The remainder of the Forest offers a wide variety of landscape and solitude for those who want to get away.

Utah is famous for big game hunting and the Fishlake is home to one of the largest deer and elk herds in Utah.

About 2,400 miles of roads, mostly unpaved, provide access to nearly all of the Forest. High clear-

FISHLAKE NATIONAL FOREST

Recreation Site Information

Location	Name	Elevation in Feet	Season Of Use	Camping	Picnicking	Group	Drinking Water	Toilet	Holding Tank/Disposal	Visitor Information	Number of Units	Special Features	Map Location
1	OAK CREEK	5900	May-Oct	F,H,T,U		J	•	C			23	1,2,16	B3
2	MAPLE HOLLOW	6900	May-Oct		H	H	•	A			11	17,27	C3
3	MAPLE GROVE	6400	May-Oct	F,H,T,U		J	•	C			23	1,2,27	D3
4	CHALK CREEK SITES	6000	May-Oct		H	H	•	B			19	1,2,16,17	D3
5	ADELAIDE	5500	May-Oct	F,H,T	H	J	•	A			8	1,2,27	E2
6	GOOSEBERRY	7800	May-Nov	H,T,U	H	J	•	A			6	1,2,26,28	E5
7	MONROVIAN PARK	6300	May-Oct		H	H	•	B			21	1,2,16,17	F4
8	BOWERY	8800	May-Oct	F,H,T,U,J		J	•	C			43	1,3,5,6,9,10,11,12,17,27,18,24,25,26	F5
8	BOWERY GROUP	8800	May-Sep			J	•	A			1	1,3,5,6,9,10,11,12,17,27,18,25,26	F5
8	BOWERY HAVEN RESORT	8800	May-Oct	J			•	A	•			5,6,9,10,12,25,26	F5
8	DOCTOR CREEK	8800	May-Oct	F,H,T,U,J		J	•	C	•		30	1,3,5,6,9,10,11,12,17,27,18,24,25,26	F5
8	DOCTOR CREEK GROUP	8800	May-Oct			J,T,U	•	A	•		2	1,3,5,6,9,10,11,12,17,27,18,25,26	F5
8	FISH LAKE LODGE	8800	May-Nov	J			•	B	•			5,6,9,10,12,25,26	F5
8	LAKESIDE RESORT	8800	May-Nov	J			•	A	•			5,6,9,10,25,26	F5
8	MACKINAW	8800	May-Sep	F,H,T,U,J		J	•	C			68	1,3,5,6,9,10,11,12,17,27,18,24,25,26	F5
8	TWIN CREEK	8800	May-Oct			J	•	C			5	1,3,5,6,9,10,11,12,17,27,18,24,25,26	F5
9	FRYING PAN	8800	May-Sep	F,H,T,U,J		J	•	A			12	26,27	F5
10	PIUTE	8600	May-Oct	F,H,U			•	A			48	1,3,5,28	F5
11	ELKHORN	9300	Jun-Oct	H,T,U		J	•	A			7	17,27	F5
12	SUNGLOW	7500	May-Nov	F,H,T,U	H	J	•	C			8	28	G6
13	CASTLE ROCK	6500	May-Nov	F,H,T,U			•	C			30	Near Fremont Indian State Park	F3
14	LITTLE COTTONWOOD	6500	May-Oct	F,H,T,U			•	C			14	1,2,16,24	G2
15	PONDEROSA	7000	May-Oct	F	H	J	•	B			5	1,2,16,27	H2
16	MAHOGANY COVE	7500	May-Oct	F,H,T,U			•	A			7	16,26,28	H2
17	LITTLE RESERVOIR	7300	Jun-Oct	F,H,T,U			•	B			8	1,4,24,27	H2
18	KENTS LAKE	8800	Jun-Sep	F,H,T,U			•	C			30	1,4,24,27	H2
19	ANDERSON MEADOW	9400	Jun-Sep	F,H,T,U			•	A			10	1,4,27	H2
20	CITY CREEK	7600	May-Oct	H,T,U		H	•	A			7	2,27	G3

KEY TO RECREATION SITE INFORMATION

Fees (Camping, Picnicking and Group):
F = Fee Charged

Modification of Facilities to Assist Users With Physical Impairments:

- A = Facilities not modified.
- B = Limited modification - At least one unit has been modified, but modification may not be sufficient to be usable by many individuals who are confined to a wheelchair.
- C = Significant modification - At least one unit has been modified to allow use by most individuals who are confined to a wheelchair.

Reservations (Camping, Picnicking, Group):

- H = Non-reservation area.
- J = Reservation accepted/recommended.
- K = Reservation required.
- L = One or more units reserved until 6 pm for handicapped use.

Type of Facilities Available (Camping):

- T = Tents
- U = Trailers
- V = Dispersed Camping Adjacent

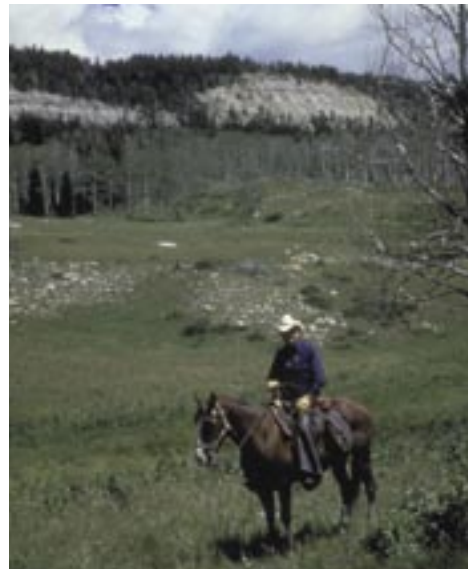
Special Features Located Within One Mile of the Site:

- 1 = Fishing
- 2 = River or stream
- 3 = Reservoir or lake (powerboats permitted)
- 4 = Reservoir or lake (no powerboats)
- 5 = Boat ramp
- 6 = Boat rental
- 7 = Floating, rafting, kayaking
- 8 = Swimming
- 9 = Marina
- 10 = Store
- 11 = Resort
- 12 = Restaurant
- 13 = Museum
- 14 = Cave
- 15 = Ghost town
- 16 = Canyon
- 17 = Trailhead
- 18 = Historic trail
- 19 = Nature trail
- 20 = Accessible by trail or boat only
- 21 = Wilderness access
- 22 = Waterfalls
- 23 = Geological area
- 24 = Handicapped facilities
- 25 = Evening program
- 26 = Scenic drive
- 27 = Timbered setting
- 28 = Open setting
- 29 = Groomed snowmobile trail
- 30 = Groomed cross-country ski trail
- 31 = Warming hut



ance vehicles are desirable to traverse most of them. A few roads, such as the highway to Fish Lake, are paved so passenger vehicles can easily travel them.

Use on the 1,920 miles of trails varies from infrequent in remote areas to heavy on the Fish Lake shore trail, which is one of two National Recreation Trails on the Forest. The other is the Skyline Trail in the Tushar Mountains, which offers an alpine setting amid peaks over 12,000 feet. The Forest is also home to the Paiute ATV Trail, a 238-mile loop that crosses three mountain ranges and runs through four central Utah counties. The Paiute Trail joins with the Great Western Trail and many popular motorized trails on the Dixie and Manti-LaSal National Forests, making the network the largest interconnected, motorized trail system in the country.



FOR MORE INFORMATION: If you would like more information or detailed maps of the Fishlake National Forest, please contact one of the following:

FOREST SUPERVISOR
Fishlake National Forest
115 East 900 North
Richfield UT 84701
(435) 896-9233

Beaver Ranger District
575 South Main
PO Box E
Beaver UT 84713
(435) 438-2436

Loa/Teasdale Ranger District
138 South Main Street
PO Box 129
Loa UT 84747
(435) 836-2811

Fillmore Ranger District
390 South Main Street
PO Box 265
Fillmore UT 84631
(435) 743-5721

Richfield Ranger District
115 East 900 North
Richfield UT 84701
(435) 896-9233

Fishlake National Forest web site:
www.fs.fed.us/r4/fishlake

Visit the Manti-LaSal National Forest

The Forest

The 1,413,111-acre Manti-LaSal National Forest is located in southeastern Utah. It is managed for multiple uses, such as range, timber, minerals, water, wildlife, and recreation. The Forest is divided into three land areas: the Manti Division, the LaSal Division at Moab, and the LaSal Division at Monticello.

The Manti Division is part of the remnant Wasatch Plateau (5,000- to 10,000-foot elevation) exhibiting high elevation lakes, diverse vegetation, near vertical escarpments, and areas of scenic and geologic interest.

On the LaSal Division-Moab, mountain peaks (12,000-foot elevation), canyons, and forest adds climatic and scenic contrast to the hot red-rock landscape of Arches (5,000-foot elevation) and Canyonlands National Parks.

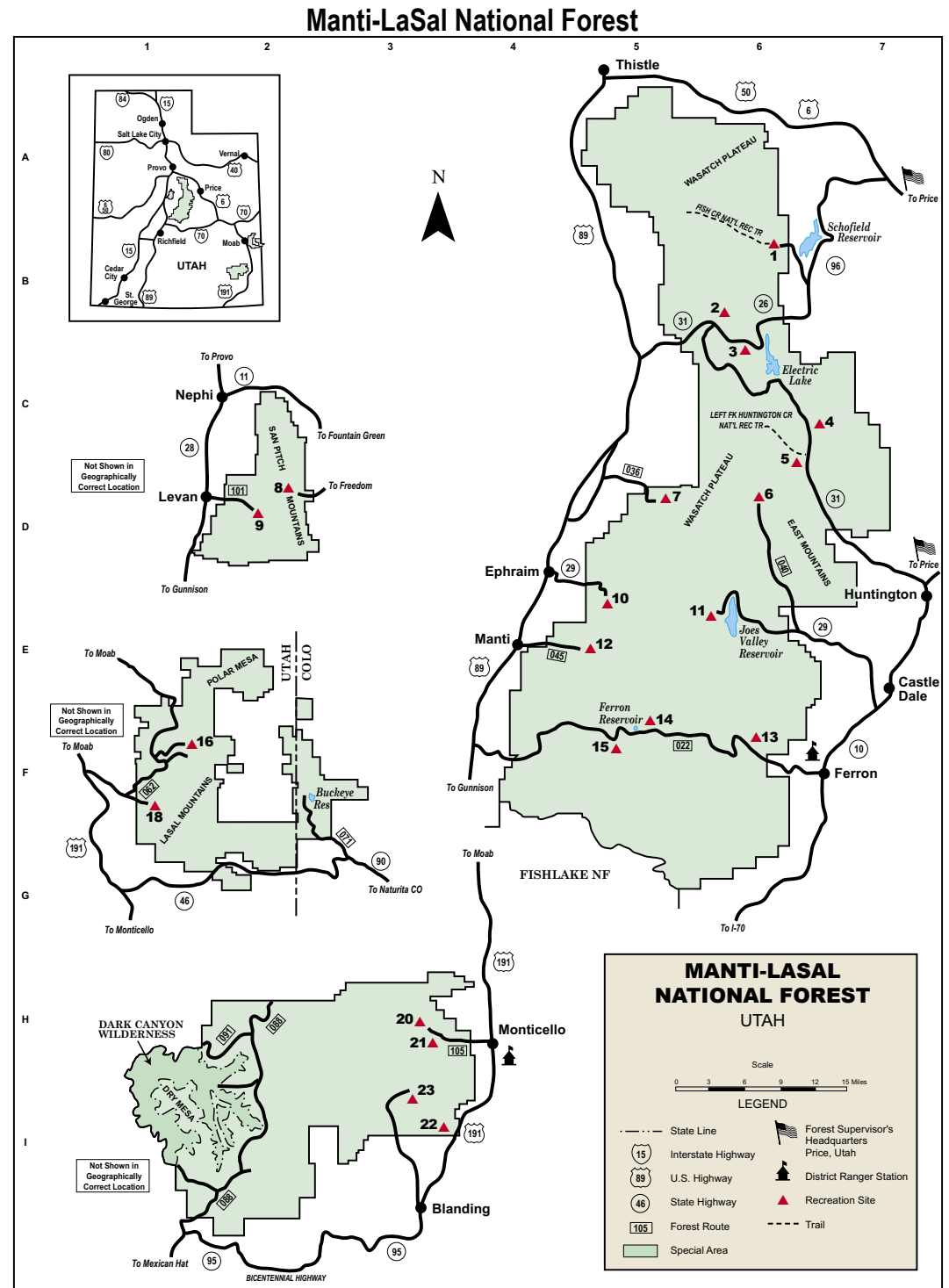
The LaSal Division-Monticello, offers timbered slopes to provide a welcome middle ground and background contrast to the sand and heat of Canyonlands National Park, Natural Bridges National Monument, and the surrounding desert. Pictographs, petroglyphs, and stone dwellings are evidence of past civilizations.

Private and State lands exist within the Forest boundaries and may be closed to public use. Please refer to maps and information on land ownership which may be obtained from the Ranger District offices.

Recreation Opportunities

Approximately one million recreation visitor days are spent annually on the Forest. Recreation pursuits include fuelwood gathering, sightseeing, hunting, fishing, off-highway vehicle riding, camping, boating, picnicking, and just relaxing in a forest environment. Winter activities include snowmobiling and cross-country skiing. The Dark Canyon Wilderness provides visitors with primitive recreation activities.

A National Scenic Byway, the Huntington and Eccles Canyons



National Scenic Byway (85 miles) is located on the Manti Division, featuring themes dealing with energy, history, and recreation. Two National Recreation Trails, the Left Fork of Huntington Canyon Trail (6 miles long) and the Fish Creek Trail (10 miles long) are located on the Manti Division. Other trails, including a transmountain trail, are found on the Moab Ranger District.

The 45,000-acre Dark Canyon Wilderness (Moab Ranger District) is located in the Colorado Plateau

Canyon terrain. Deep sandstone canyons characterize the Wilderness, with vertical walls ranging from a few hundred to thousands of feet in height. Pinyon-juniper is interspersed on the bench land. High red-rock canyons dwarf visitors with terraced castle-like walls towering 3,000 feet above the canyon floors. Arches, springs, seeps, and hanging gardens exist throughout the Wilderness. Life zones range from ponderosa pine and aspen-covered high country to desert vegetation in the

bottom of Dark Canyon. Wildlife species are diverse and include mule deer and cougar. The area ranks high in archaeological and scenic value.

Dispersed recreation occurs mostly along or adjacent to roads and includes activities such as pleasure driving, camping, hiking, mountain biking, hunting, fishing, and wilderness travel.



MANTI-LASAL NATIONAL FOREST

Recreation Site Information

Location	Name	Elevation in Feet	Season Of Use	Camping	Picnicking	Group	Drinking Water	Toilet	Holding Tank/Disposal	Visitor Information	Number of Units	Special Features	Map Location
1	FISH CREEK	7700	May-Oct		H				C		7	1, 2, 17, 28	B6
2	GOOSEBERRY	8400	Jun-Oct	F,H,T	F,H	F,J	A	A			10	1, 2, 4, 26, 28	B6
3	FLAT CANYON	8800	Jun-Oct	F,J,U	F,H	F,J	A	A			12	1, 2, 3, 4, 5, 27	C6
4	OLD FOLKS FLAT	7800	May-Oct	F,J,U	F,H	F,J	B	C			8	1, 2, 16, 19, 26, 27	C6
5	FORKS OF HUNTINGTON CANYON	7600	May-Oct	F,H	F,H	F,J	B	A			6	1, 2, 16, 17, 19, 26, 27	D6
6	INDIAN CREEK	8700	Jun-Oct	F,K	F,K	F,K	A	A			29	1, 2, 27	D6
7	SPRING CITY	7500	Jun-Oct	F,H	H	F,J	A	A			6	1, 2, 16, 28	D5
8	MAPLE CANYON	6800	May-Oct	F,H	F,H	F,J	A				12	2, 17, 19, 23, 27	D2
9	CHICKEN CREEK	6200	May-Oct	F,H	F,H	F,J	A	A			8	1, 2, 26, 27	D2
10	LAKE HILL	8500	Jun-Oct	F,H	F,H	F,J	A	A			12	1, 4, 27	E5
11	JOES VALLEY	7100	May-Oct	F,H,J	F,H		A	B			46	1, 2, 3, 5, 6, 7, 9, 10, 12, 16, 28	E6
11	JOES VALLEY BOAT RAMP	7100	May-Oct	F,H,J	F,H		A	A			20	1, 2, 3, 5, 6, 7, 9, 10, 12, 16, 28	E6
12	MANTI COMMUNITY	7400	Jun-Oct	F,H	F,H	F,J	A	A			7	1, 4, 27	E5
13	FERRON CANYON	7000	May-Oct	H	H	H	A	A			4	1, 2, 16, 27	F6
14	FERRON RESERVOIR	9600	Jun-Oct	F,H	F,H	F	A	A			30	1, 3, 5, 6, 10, 11, 12, 26, 27	F5
15	TWELVE MILE FLAT	9800	Jun-Oct	F,H	F,H	F,J	A	A			13	17	F5
16	WARNER	9200	Jul-Oct	F,H	F,H	F,J	A	A			27	1, 4, 19, 26, 27	F1
18	PACK CREEK	6800	Jun-Oct		H	J	A	A			9	16, 19, 27	
20	BUCKBOARD	8600	Jul-Oct	F,H	F,H	F,J	A	B			12	1, 27	F1
21	DALTON SPRINGS	8200	Jul-Oct	F,H	F,H	F	A	B			16	27	
22	DEVILS CANYON	7400	Jun-Oct	F,J	F,H	F,J	C	A			33	19, 23, 27	H3
23	NIZHONI	6800	Jun-Oct	F,H	F,H	F,J	C	C			21	4, 18, 24, 27	H3

KEY TO RECREATION SITE INFORMATION

Fees (Camping, Picnicking and Group):
F = Fee Charged

Modification of Facilities to Assist Users With Physical Impairments:

- A = Facilities not modified.
- B = Limited modification - At least one unit has been modified, but modification may not be sufficient to be usable by many individuals who are confined to a wheelchair.
- C = Significant modification - At least one unit has been modified to allow use by most individuals who are confined to a wheelchair.

Reservations (Camping, Picnicking, Group):

- H = Non-reservation area.
- J = Reservation accepted/recommended.
- K = Reservation required.
- L = One or more units reserved until 6 pm for handicapped use.

Type of Facilities Available (Camping):

- T = Tents
- U = Trailers

Special Features Located Within One Mile of the Site:

- 1 = Fishing
- 2 = River or stream
- 3 = Reservoir or lake (powerboats permitted)
- 4 = Reservoir or lake (no powerboats)
- 5 = Boat ramp
- 6 = Boat rental
- 7 = Floating, rafting, kayaking
- 8 = Swimming
- 9 = Marina
- 10 = Store
- 11 = Resort
- 12 = Restaurant
- 13 = Museum
- 14 = Cave
- 15 = Ghost town
- 16 = Canyon
- 17 = Trailhead
- 18 = Historic trail
- 19 = Nature trail
- 20 = Accessible by trail or boat only
- 21 = Wilderness access
- 22 = Waterfalls
- 23 = Geological area
- 24 = Handicapped facilities
- 25 = Evening program
- 26 = Scenic drive
- 27 = Timbered setting
- 28 = Open setting



FOR MORE INFORMATION: If you would like more information or detailed maps of the Manti-LaSal National Forest, please contact one of the following:

FOREST SUPERVISOR
Manti-LaSal National Forest
599 West Price River Drive
Price UT 84501
(435) 637-2817

Ferron Ranger District
115 West Canyon Road
PO Box 310
Ferron UT 84523
(435) 384-2372

Price Ranger District
599 West Price River Drive
Price UT 84501
(435) 637-2817

Moab Ranger District
62 East 100 North
PO Box 386
Moab UT 84532
(435) 259-7155

Monticello Ranger District
496 East Central
PO Box 820
Monticello UT 84535
(435) 587-2041

Sanpete Ranger District
540 North Main Street
Ephraim UT 84627
(435) 283-4151

Manti-LaSal National Forest website:
www.fs.fed.us/r4/mtnf

Explore the Uinta National Forest

The Forest

The Uinta National Forest covers many steep canyons and high mountain peaks along the Wasatch Front, from "Point of the Mountain" near Salt Lake City south to Nephi. A small portion of the Forest lies west of Eureka and is surrounded by the western desert of Utah. The Forest covers 949,848 acres, ranging from high western desert at Vernon to lofty mountain peaks such as Mount Nebo (11,877 feet), the highest peak in the Wasatch Mountain Range.

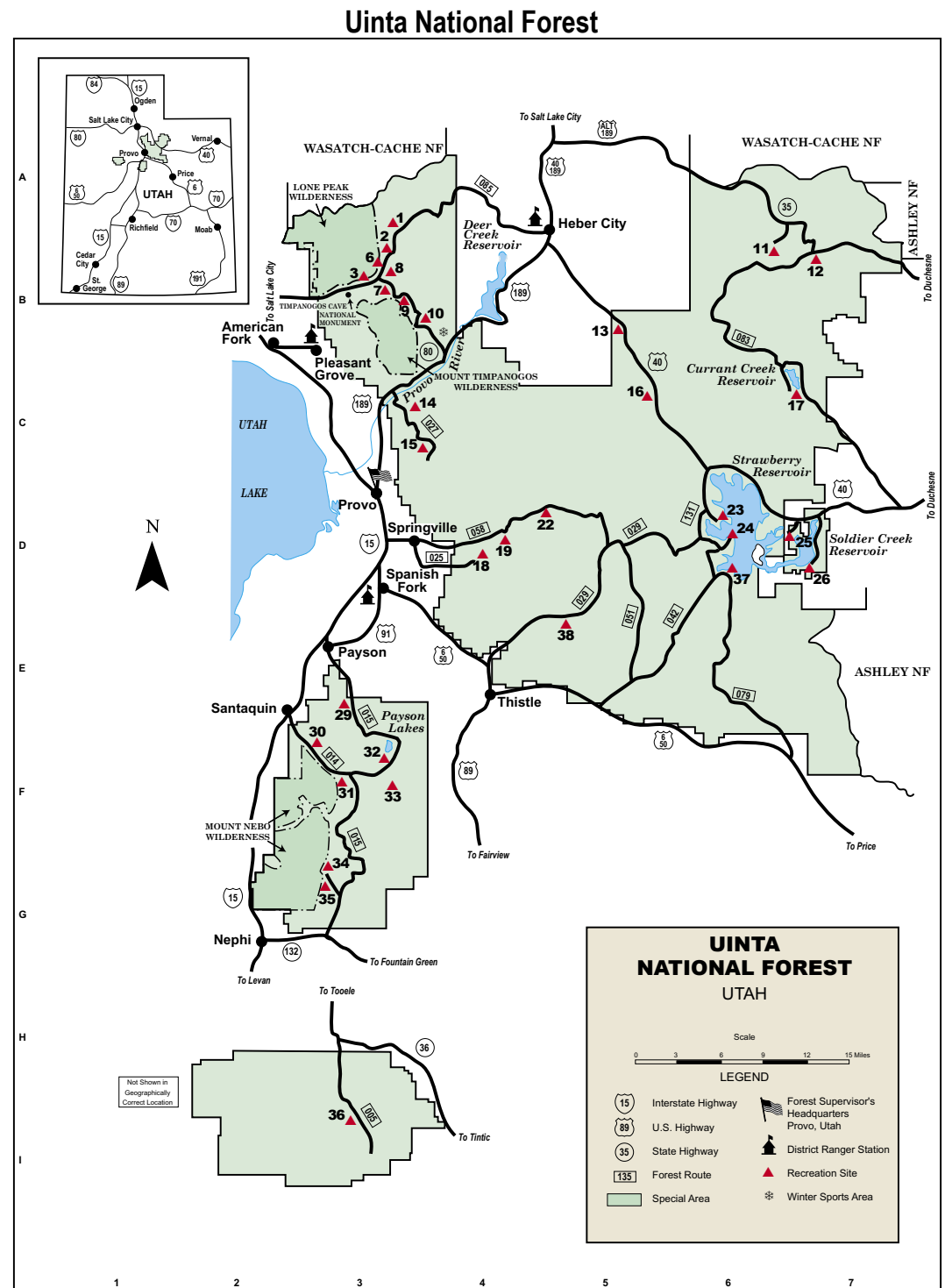
Recreation Opportunities

The Uinta's scenic beauty offers unlimited recreational opportunities any season of the year! Whether you are a hiker, skier, camper, or horseback rider, the Forest can provide the recreational experience you are seeking. There are 650 miles of trails on the Forest, including the Great Western Trail that crosses the Uinta from north to south. Berry picking, birding, fishing, hunting, and snowmobiling are some other activities available on the Forest. Several cross-country ski trails are easily accessible.

Developed sites on the Forest include campgrounds, picnic areas, marinas, boat ramps, fishing access sites, trailheads, organizational camps, and recreation residences. For your convenience, reservations can be made (240 days single family, 360 days group) in advance of your outing at several campgrounds on the Uinta National Forest.

Three wildernesses have been designated on the Forest along the Wasatch Front. Lone Peak Wilderness (30,088 acres) is primarily a day-use area due to its small size and proximity to a large urban population. Principle uses are day-hiking, backpacking, hunting, technical rock climbing, horseback riding, ski touring, photography and nature study. Small size and proximity to the large Wasatch Front population also makes Mount Timpanogos Wilderness (10,750 acres) predominantly a day-use wilderness.

Opportunities for scenic viewing and photography are abundant,



with waterfalls, glacial cirques, rugged terrain, and wildflowers for subjects. Other uses are day-hiking, nature study and backpacking. Horse use is limited from the Timpooneke Trail to the Timpanogos Basin Area. Mount Nebo Wilderness (28,170 acres) has a trail system offering hiking, back packing, and horseback riding opportunities.

There are a variety of other interesting attractions on the Forest. The Alpine Scenic Loop, a 24-mile paved road, takes you east up American Fork Canyon to U.S.

Highway 189 in Provo Canyon. Along the way you will pass numerous campgrounds, picnic areas, and the Timpanogos Cave National Monument and Visitor Center. Views of Mount Timpanogos will remind you of the Swiss Alps. Cascade Springs Scenic Highway, a 7.5-mile paved road off the Alpine Scenic Loop, goes to the Cascade Springs Interpretive Site, where large springs cascade down the mountain slope in a series of limestone terraces and pools. Boardwalks wind through the area, giving visitors an

opportunity to view trout which inhabit these pools. Fishing is not permitted in the Springs area.

Mt. Nebo National Scenic Byway is a 32-mile paved road through rugged mountain beauty with several magnificent overlooks of the surrounding valleys. The Byway begins at Payson and terminates near Nephi. It passes Payson Lakes campground and recreation area, the Blackhawk campground with its facilities for campers with horses, and Devil's Kitchen Geologic Interest Area which is similar to

UINTA NATIONAL FOREST

Recreation Site Information

Location	Name	Elevation in Feet	Season Of Use	Camping	Picnicking	Group	Drinking Water	Toilet	Holding Tank Disposal	Visitor Information	Number of Units	Special Features	Map Location
1	GRANITE FLAT	6800	Jun-Sep	F,B,J,T,U		F,B,K,T,U	C	C	*		55	1,2,4,7,16,17,21,24,26,27	A3
2	MILE ROCK WINTER CAMPING	6400	Oct-May	F	A,H,F		A	A			6	1,2,14,16,26,27	B3
2	MARTIN WINTER CAMPING	6200	Oct-May		A,H,F		A	A			5	1,2,14,16,26,27	B3
3	NORTH MILL	6000	Jun-Sep			F,B,K,T,U	B	A	*		1	1,2,14,16,26,27	B3
3	LITTLE MILL	6000	Jun-Oct	F,B,L,T,U,J			B	A	*		79	1,2,14,16,26,27	B3
6	GREY CLIFFS	7000	Jun-Oct		A,H,F		A	A			12	1,2,14,16,26,27	B3
7	TIMPOONEKE	7400	Jun-Sep	F,A,J,T,U			B	C	*		32	17,21,26,27	B3
8	ROADHOUSE WINTER CAMPING	6200	Jun-Sep		A,H,F		A	A			6	1,2,4,14,16,26,27	B3
8	ECHO WINTER CAMPING	6000	Oct-May		A,H,F		A	A			3	1,2,14,16,26,27	B3
9	ALTAMONT	7200	Jun-Sep			F,C,K,T,U	C	C	*		1	17,21,24,26,27	B3
10	MT TIMPANOGOS	6800	Jun-Sep	F,B,J,T,U			B	C	*		27	11,17,21,26,27	B4
10	THEATER-IN-THE-PINES	6800	Jun-Sep			F,A,K,T,U	A	A	*		1	11,17,21,22,26,27	B4
11	MILL HOLLOW	8800	Jun-Sep	F,A,J,T,U			A	C	*		26	1,4,7,17,26,27	B6
12	WOLF CREEK	9400	Jun-Sep	F,A,J,T,U		F,A,K,T,U	A	A			5	26,27	B7
13	WHISKEY SPRINGS	6400	May-Oct		F,A,H		C	C	*		5	1,2,16,19,24,26,27	B5
14	HOPE	6600	Jun-Sep	F,A,J,T,U			B	C	*		24	26,27	C3
15	ROCK CANYON	6900	May-Sep			F,A,K,T,U	A	A			4	17,26,27	C3
16	LODGEPOLE	7800	May-Oct	F,B,J,T,U			B	C	*		49	1,2,10,12,16,17,24,26,27	C5
17	CURRANT CREEK	8000	May-Oct	F,C,J,L,T,U		F,B,T,K,U	B	C	*		103	1,2,3,5,7,17,19,24,26,27	C6
18	WHITING	5400	May-Oct	F,A,J,T,U		F,A,K,T,U	A	A	*		27	16,17,27	D4
19	CHERRY	5200	May-Oct	F,A,J,T,U		F,C,K,T,U	C	C	*		18	1,2,16,17,24,27	D4
22	BALSAM	6000	May-Oct	F,B,H,T,U		F,B,K,T,U	B	B	*		26	1,2,16,17,27	D4
23	STRAWBERRY BAY	7800	May-Oct	F,C,J,L,T,U	C,H	F,C,K,T,U	C	C	*		299	1,2,3,5,6,7,9,10,11,12,17,25,28	D6
24	HAWS POINT	7600	May-Oct		C,H		C	C	*		8	1,3,7,24,28	D6
25	SOLDIER CREEK	7900	May-Oct	F,C,J,L,T,U	C,H		C	C	*		176	1,3,5,6,7,9,10,28	D6
26	ASPEN GROVE	7600	May-Oct	F,B,J,T,U			B	C	*		53	1,3,5,7,9,10,17,27,28	D6
29	MAPLE BENCH	5800	May-Oct	H,T,U			A	A	*		10	1,4,7,16,17,26,27,29	E3
30	TRUMBOLT	6200	May-Oct		A,H	A,H	A	A	*		8	1,2,16,26,27	F3
31	TINNEY FLAT	7000	Jun-Oct	F,A,J,T,U			A	A	*		17	1,2,16,17,21,24,26,27	F3
32	PAYSON LAKES	8000	Jun-Oct	F,B,J,L,T,U		F,B,K,T,U	B	C	*		103	1,2,4,7,8,19,24,26,27	F3
33	BLACKHAWK	8000	Jun-Oct	F,B,J,T,U		F,B,K,T,U	B	B	*		38	17,26,27	F3
34	BEAR CANYON	6800	May-Oct	F,A,H,T		F,B,K,T,U	B	C	*		9	1,2,16,17,21,26,27	G3
35	PONDEROSA	6200	May-Oct	F,A,J,T,U			A	A	*		22	1,2,26,27	G3
36	VERNON RESERVOIR	6500	Jun-Oct		A,H						11	1,4,28	I3
37	RENEGADE	7800	May-Oct	F,A,J,T,U			A	C	*		66	1,3,5,7,9,10,17,28	D6
38	DIAMOND CAMPGROUND	5200	May-Oct	C,F,A,T,U,J		C,F,A,T,U,J	A	B	*		61	1,2,28	E5
	MAPLE LAKE	6100	May-Oct	A,H,T,U	AH						15	1,4,7,27	

KEY TO RECREATION SITE INFORMATION

Fees (Camping, Picnicking and Group):
F = Fee Charged

Modification of Facilities to Assist Users With Physical Impairments:

- A = Facilities not modified.
- B = Limited modification - At least one unit has been modified, but modification may not be sufficient to be usable by many individuals who are confined to a wheelchair.
- C = Significant modification - At least one unit has been modified to allow use by most individuals who are confined to a wheelchair.

Reservations (Camping, Picnicking, Group):

- H = Non-reservation area.
- J = Reservation accepted/recommended.
- K = Reservation required.
- L = One or more units reserved until 6 pm for handicapped use.

Type of Facilities Available (Camping):

- T = Tents
- U = Trailers

Special Features Located Within One Mile of the Site:

- 1 = Fishing
- 2 = River or stream
- 3 = Reservoir or lake (powerboats permitted)
- 4 = Reservoir or lake (no powerboats)
- 5 = Boat ramp
- 6 = Boat rental
- 7 = Floating, rafting, kayaking
- 8 = Swimming
- 9 = Marina
- 10 = Store
- 11 = Resort
- 12 = Restaurant
- 13 = Museum
- 14 = Cave
- 15 = Ghost town
- 16 = Canyon
- 17 = Trailhead
- 18 = Historic trail
- 19 = Nature trail
- 20 = Accessible by trail or boat only
- 21 = Wilderness access
- 22 = Waterfalls
- 23 = Geological area
- 24 = Handicapped facilities
- 25 = Evening program
- 26 = Scenic drive
- 27 = Timbered setting
- 28 = Open setting



Bryce Canyon National Park, but on a smaller scale.

Strawberry Reservoir, 23 miles southeast of Heber, features excellent fishing. Facilities include campgrounds, picnic sites, paved boat ramps, and full-service marinas at Strawberry Bay and Soldier Creek. The area also draws many snowmobilers during the winter.

Currant Creek Reservoir and Recreation Area, 40 miles southeast of Heber, offers a large campground, paved boat ramp, an interpretive nature trail, and numerous hiking

and horseback riding trails. A special campground loop provides facilities for keeping riding stock within the campground. A specially constructed pier on the reservoir provides universal access for fishing.

FOR MORE INFORMATION: If you would like more information or detailed maps of the Uinta National Forest, please contact one of the following:

FOREST SUPERVISOR
Uinta National Forest
88 West 100 North
P.O. Box 1428
Provo UT 84603
(801) 342-5100

Heber Ranger District
2460 South Highway 40
PO Box 190
Heber City UT 84032
(435) 654-0470

Pleasant Grove Ranger District
390 North 100 East
Pleasant Grove UT 84062
(801) 342-5240

Spanish Fork Ranger district
44 West 400 North
Spanish Fork UT 84660
(801) 342-5260

Uinta National Forest web site:
www.fs.fed.us/r4/unf



Welcome to the

Wasatch-Cache National Forest

National Forest

The Forest

The Wasatch-Cache National Forest includes mountain lands located in northern Utah and south-western Wyoming. These lands are located in three major geographic areas: the northern and western slopes of the Uinta Mountains; the Wasatch Front from Lone Peak north to the Idaho border, including the Wasatch, Monte Cristo, and Bear River Ranges; and the Stansbury Range in the Great Basin.

The Forest encompasses 1,928,185 acres of which 1,219,748 acres are National Forest System Land. State and local governments and private concerns own the remaining 708,437 acres.

Recreation Opportunities

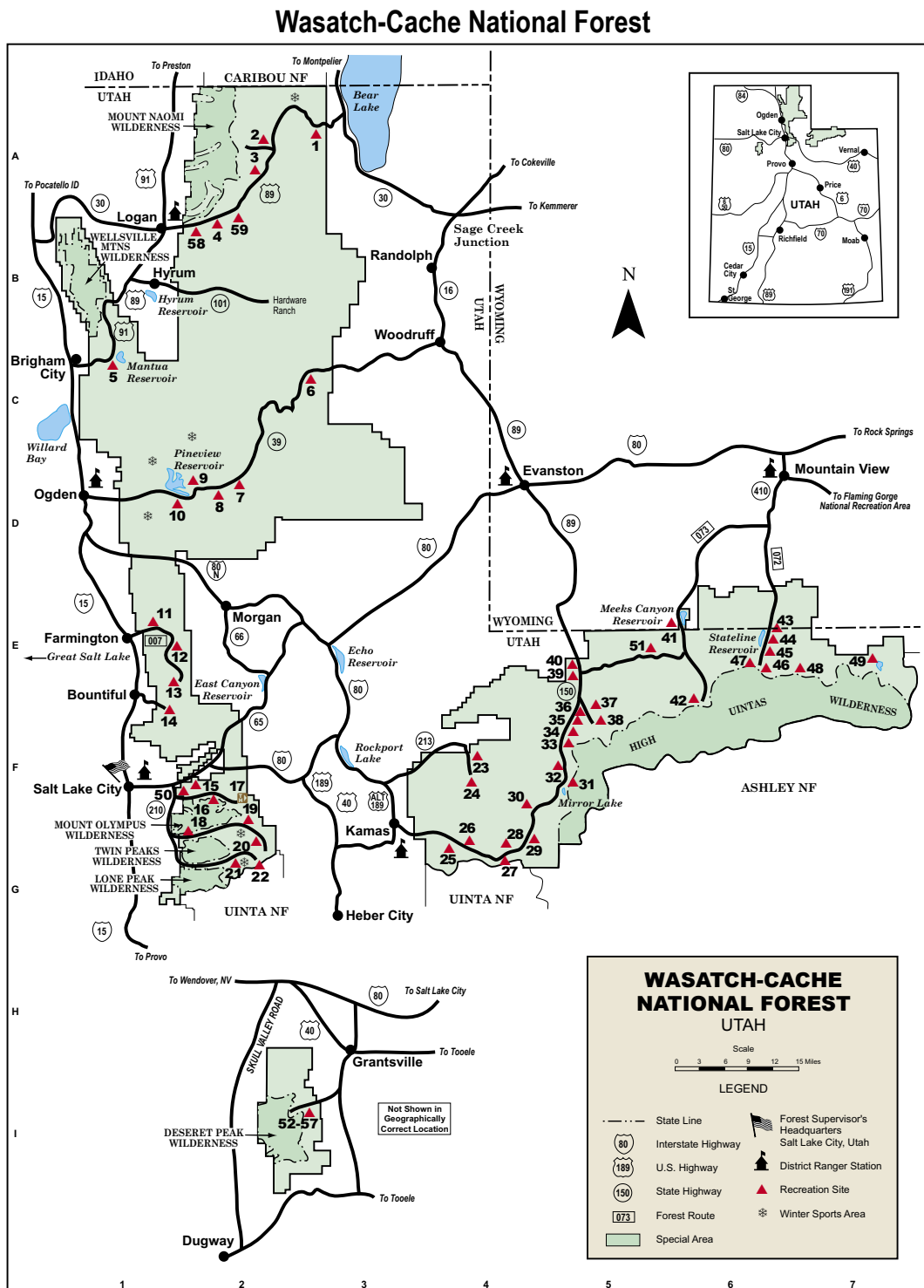
The Wasatch-Cache National Forest offers an ample variety of outdoor recreational opportunities which include camping, hiking, back packing, fishing, skiing, snow-mobiling, and horseback and trail bike riding.

The Forest is rich in scenic beauty and natural resources. Clear, snow-fed streams tumble down canyons of the rugged Wasatch and Uinta Mountains. Many animal species live in the woods and meadows where deer, moose, and elk are often seen. Lakes and reservoirs provide excellent boating, fishing, and swimming opportunities.

The Wasatch-Cache is one of the most heavily used National Forests for recreation in the Nation. Campground areas near Salt Lake City and Ogden are extremely popular. Visitors desiring more solitude will want to head farther into the mountains.

Nearly one-half million acres of high mountain country are managed for their outstanding wilderness qualities. Six Wilderness Areas are found on the Forest, along with part of the High Uintas Wilderness. Trails are available throughout the wilderness, but motorized and mechanized vehicles are prohibited.

There are 1,391 miles of roads providing access throughout the Forest. This includes State desig-



nated Scenic Highways Mirror Lake, Monte Cristo, and Big Cottonwood and Little Cottonwood Canyons.

The ever popular Logan Canyon is now designated as a National Scenic Byway. The Forest provides 1,050 miles of trails for access to non-roaded areas.

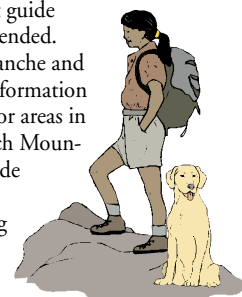
Special places with unique features such as Ricks Springs, Jardine Juniper, Mirror Lake, Albion Basin, old mining activity in Big and Little Cottonwood Canyons, and the site where granite was quarried to build the Salt Lake "Mormon" Temple, are

found throughout the Forest.

Skiers find the "greatest snow on earth" here! Fluffy, dry powder falls for nearly five months of the year in this winter paradise. Several major ski resorts are within a few hours drive from key cities along the Wasatch Front where there are opportunities for down hill, alpine, nordic, and cross-country skiing; and snow shoeing, snowboarding, and helicopter skiing.

Although some marked trails are available, the adventurous skier may wish to strike out over the

unmarked, snow-covered forest. Since avalanches and blizzards may occur with little warning, a competent guide is recommended. Snow avalanche and weather information numbers for areas in the Wasatch Mountains provide information during the snow season.



WASATCH-CACHE NATIONAL FOREST

Recreation Site Information

Location	Name	Elevation in Feet	Season Of Use	Camping	Picnicking	Group	Drinking Water	Toilet	Holding Tank Disposal	Visitor Information	Number of Units	Special Features	Map Location
1	SUNRISE	7800	Oct-Sep	F,J,T,U			A	C			27	16,26,27	A3
2	LEWIS M. TURNER	5900	Jun-Sep	F,A,H,T,U			A	A			10	16,26,27	A2
3	TONY GROVE LAKE	8100	Jul-Sep	F,A,J,T,U			A	A	*		36	1,4,8,16,17,19,21,26,27	A2
4	GUINAVAH-MALIBU	5200	May-Oct	F,J,T,U		A,J	B	A	*		40	1,2,16,17,19,25,26,27	B2
5	BOX ELDER	5200	May-Oct	F,J,T,U		A,J	A	A	*		26	16,26,27	C1
6	MONTE CRISTO	8400	Jul-Sep	F,B,H,T,U		B,J	B	B			45	16,26,27	C2
8	SOUTH FORK	5200	May-Oct	F,B,H,T,U			B	B			43	1,2,16,26,27	D2
7	PERCEPTION PARK	5200	May-Oct	F,C,H,T,U	C,H	F,C,J,T,U	C	C			44	1,2,16,19,24,26,27	D2
9	MIDDLE INLET BEACH	5000	May-Oct			F,B,H		B				1,3,8,26,28	D2
10	ANDERSON COVE	5000	May-Oct	F,B,C,J,T,U	F,B	F,B,J,T,U	C	C	*	*	69	1,3,8,10,26,28	D1
11	SUNSET	6400	Jun-Sep	F,A,H,T,U			A	A	*		15	2,16,26,27	E1
12	BOUNTIFUL PEAK	7500	Jun-Sep	F,A,T,U,J	F,A	F,J	A	A			42	2,26,27	E1
14	MUELLER PARK	5400	May-Oct		F,C,H,J	F,B,J	C	C			20	1,2,16,17,26,27	F1
15	BOX ELDER	5800	May-Oct		F,C,H,J	F,J,C	C	C			42	2,16,17,21,26,27	F2
16	TERRACES	6100	May-Oct		F,C,H,J	F,C,J	C	C			13	16,17,21,26,27	F2
17	BIG WATER TRAILHEAD	7800	Jun-Oct					C				2,16,17,21,26,27	F2
18	DOGWOOD	5200	May-Oct		C,H,F	C,H,F		C			7	1,2,16,27 watershed - no animals	G2
18	LEDGEMERE	5400	May-Oct		C,H,F			C			14	1,2,16,26,27 watershed - no animals	G2
19	JORDAN PINES	7200	Jun-Sep		F,B,K,T,U		A	B			5	1,2,16,17,26,27 watershed - no animals	F2
19	SPRUCES	7400	Jun-Sep	F,C,J,T,U	F,C,J	F,C,J,T,U	C	C			100	1,2,16,17,25,26,27 watershed - no animals	F2
20	REDMAN	8300	Jun-Sep	J,F,A,T,U	F,A,J	F,A,J,U,T	C	C			44	1,2,16,26,27 watershed - no animals	G2
21	TANNERS FLAT	7200	May-Oct	J,F,C,T,U	F,C,J	F,C,J,T,U	C	C			40	2,16,17,25,26,27 watershed - no animals	G2
22	ALBION BASIN	9500	Jul-Sep	F,A,J,T,U	F,A,H	F,A,J,T,U	A	B			23	16,17,23,26,27 watershed - no animals	G2
23	SMITH AND MOREHOUSE	7680	May-Sep	F,C,L,T,U			C	C	*		34	1,2,3,5,16,24,26,27	F4
24	LEDGEFORK	7750	May-Sep	F,B,L,T,U			B	B			73	1,2,3,16,17,26,27	F4
25	SINGLE CREEK	7480	May-Oct	F,A,H,T,U	A,H		A	B			21	1,2,16,26,28	G4
26	PINE VALLE GROUP	7440	Jun-Sep			F,B,K,T,U	B	B				1,2,16,26,27	G4
27	SOAPSTONE	7870	Jun-Oct	F,B,T,U			B	B	*		33	1,2,16,26,27	G4
28	SHADY DELL	8040	Jun-Oct	F,B,H,T,U			B	B			20	1,2,16,26,27	G4
29	COBBLE REST	8280	Jun-Sep	F,B,H,T,U			B	B			18	1,2,16,26,27	G4
30	TRIAL LAKE	9840	Jul-Sep	F,C,T,U,L			C	C			60	1,4,16,24,26,27	F4
30	LOST LAKE	9940	Jul-Sep	F,A,T,U			B	A			34	1,4,16,26,27	F4
30	WASHINGTON LAKE FAMILY GROUP		Jul-Sep	F,B,J,T,U							40	1,4,17,27	F4
31	MOOSE HORN LAKE	10,400	Jul-Sep	F,A,T,U			A	A			33	1,4,23,26,27	F5
31	MIRROR LAKE	10,000	Jul-Sep	F,C,T,U	F,A,H		C	C	*		85	1,4,5,17,19,21,22,24,25,26,27	F5
32	BUTTERFLY LAKE	10,360	Jul-Sep	F,A,H,T,U	F,A,H		A	A			20	1,4,23,26,27	F5
32	PASS LAKE TRAILHEAD	10,120	Jul-Sep		B,H			B				1,4,16,17,23,26,27	F5
33	SULPHUR	9200	Jun-Oct	F,A,H,T,U	F,A,J		A	B			21	1,2,16,26,27	F5
34	BEAVER VIEW	8900	Jun-Oct	F,A,H,T,U	F,A,J		A	B			8	1,2,16,26,27	F5
35	HAYDEN FORK	8800	Jun-Oct	F,A,H,T,U			A	B			9	1,2,16,26,27	F5
36	STILLWATER	8500	Jun-Oct	F,A,H,J,T,U	F,A,J	A,K,T,U	A	B			21	1,2,16,26,27	F5
37	WOLVERINE ATV TRAILHEAD	9000	Jun-Oct	F,A,H,T,U				B			6	17,26,27	F5
38	CHRISTMAS MEADOWS	8800	Jun-Oct	F,A,H,J,T,U			A	B			11	1,2,16,17,21,26,27	F5
39	BEAR RIVER	8400	Jun-Oct	F,A,H,T,U			A	B			4	1,2,16,26,27	E5
40	EAST FORK BEAR RIVER	8400	Jun-Oct	F,A,H,T,U			A	B			8	1,2,16,26,27	E5
41	MEEKS CABIN	8700	Jun-Oct	F,A,H,T,U			A	A			24	1,3,8,26,27	E6
42	EAST FORK BLACKS FORK TRAILHEAD	9300	Jun-Oct	A,H,T,U				B			8	1,2,16,17,21,26,27	F6
43	STATE LINE**	9200	Jun-Oct	F,C,H,L,T,U			C	C			41	1,3,5,24,26,27	E6
44	BRIDGER LAKE	9400	Jun-Oct	F,C,H,L,T,U			C	C			30	1,4,5,24,26,27	E6
45	MARSH LAKE	9400	Jun-Oct	F,A,H,T,U				A			46	1,4,26,27	E6
46	CHINA MEADOWS	10,000	Jun-Oct	F,A,H,T,U				A			9	1,4,26,27	E6
47	CHINA MEADOWS TRAILHEAD	10,000	Jun-Oct	F,A,H,T,U				A			12	1,17,21,26,27	E6
48	HENRYS FORK TRAILHEAD	10,000	Jun-Oct	A,H,T,U				A			7	1,17,21,26,27	E6
49	HOOP LAKE	9000	Jun-Oct	F,A,H,T,U				A	B		44	1,4,26,27	E7
50	CHURCHFORK	5200	May-Oct		C,H,F	C,J,F	C	C			16	2,16,17	F2
51	LITTLE LYMAN LAKE CAMPGROUND	9200	Jun-Oct	F,A,H,T,U				A	B		10	1,4,26,27	
52	COTTONWOOD	6080	May-Oct	H,T,F,A	H,F,A	H,F,A	A	A			2	16,21	I3
53	INTAKE	6320	May-Oct	H,T,F,A	H,F,A	H,F,A	A	A			4	16,21	I3
54	BOY SCOUT	6320	May-Oct	H,T,F,A	H,F,A	H,F,A	A	A			8	16,17,21	I3
55	LOWER NARROWS	6840	May-Oct	H,T,F,A	H,F,A	H,F,A	A	A			3	16,21	I3
56	UPPER NARROWS	6920	May-Oct	T,F,A	F,A	J,F,A	A	A			8	16,21	I3
57	LOOP	7400	May-Oct	H,T,F,A	H,F,A	H,F,A	A	A			9	16,17,21	I3
58	SECOND DAM	5000	May-Oct		C,H			C			4	1,2,16,17,24,26,27	A2
58	CHOKECHERRY	5400	May-Oct		C,H			C			4	1,2,16,24,26,27	A2
59	CARD	5400	May-Oct		C,H			C			4	1,2,16,24,26,27	A2

** State Line campground is the only one that has a holding tank disposal.



KEY TO RECREATION SITE INFORMATION

Fees (Camping, Picnicking and Group):
F = Fee Charged

Modification of Facilities to Assist Users With Physical Impairments:

- A = Facilities not modified.
- B = Limited modification - At least one unit has been modified, but modification may not be sufficient to be usable by many individuals who are confined to a wheelchair.
- C = Significant modification - At least one unit has been modified to allow use by most individuals who are confined to a wheelchair.

Reservations (Camping, Picnicking, Group):

- H = Non-reservation area.
- J = Reservation accepted/recommended.
- K = Reservation required.
- L = One or more units reserved until 6 pm for handicapped use.

Type of Facilities Available (Camping):

- T = Tents
- U = Trailers

Special Features Located Within One Mile of the Site:

- 1 = Fishing
- 2 = River or stream
- 3 = Reservoir or lake (powerboats permitted)
- 4 = Reservoir or lake (no powerboats)
- 5 = Boat ramp
- 6 = Boat rental
- 7 = Floating, rafting, kayaking
- 8 = Swimming
- 9 = Marina
- 10 = Store
- 11 = Resort
- 12 = Restaurant
- 13 = Museum
- 14 = Cave
- 15 = Ghost town
- 16 = Canyon
- 17 = Trailhead
- 18 = Historic trail
- 19 = Nature trail
- 20 = Accessible by trail or boat only
- 21 = Wilderness access
- 22 = Waterfalls
- 23 = Geological area
- 24 = Handicapped facilities
- 25 = Evening program
- 26 = Scenic drive
- 27 = Timbered setting
- 28 = Open setting

FOR MORE INFORMATION: If you would like more information or detailed maps of the Wasatch-Cache National Forest, please contact one of the following:

FOREST SUPERVISOR

Wasatch-Cache National Forest
8236 Federal Building
125 South State Street
Salt Lake City UT 84138
(801) 524-3900

Salt Lake Ranger District
6944 South 3000 East
Salt Lake City UT 84121
(801) 733-2660

Kamas Ranger District
50 East Center Street
PO Box 68
Kamas UT 84036
(435) 783-4338

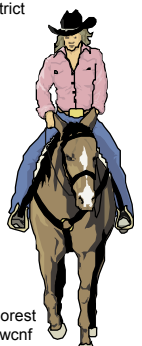
Evanston Ranger District
1565 Highway 150 South, Suite A
PO Box 1880
Evanston WY 82931-1880
(307) 789-3194

Mountain View Ranger District
321 Highway 414
PO Box 129
Mountain View WY 82939
(307) 782-6555

Ogden Ranger District
507 25th Street, Suite 103
Ogden UT 84401
(801) 625-5112

Logan Ranger District
1500 East Highway 89
Logan UT 84321-4373
(435) 755-3620

Wasatch-Cache National Forest
web site: www.fs.fed.us/r4/wcnf



UNITED STATES DEPARTMENT OF AGRICULTURE
FOREST SERVICE
FEDERAL OFFICE BUILDING
324 25TH STREET
OGDEN, UTAH 84401

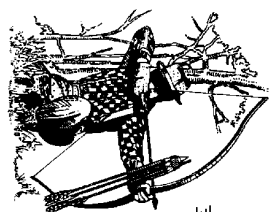
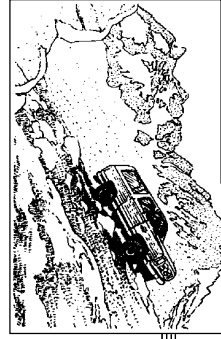
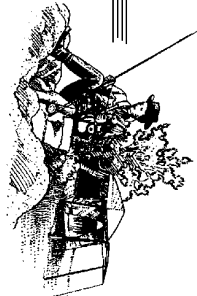
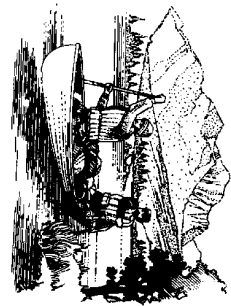
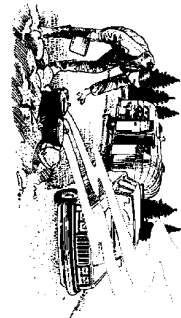
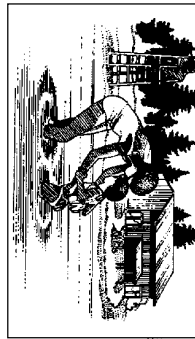
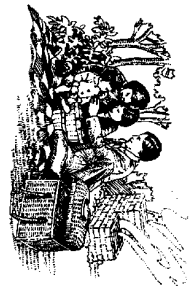
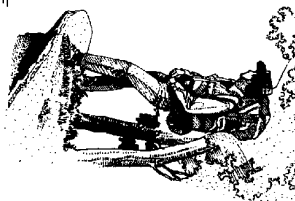
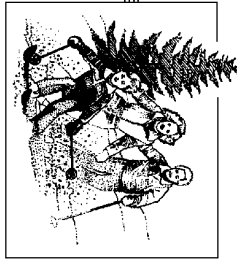
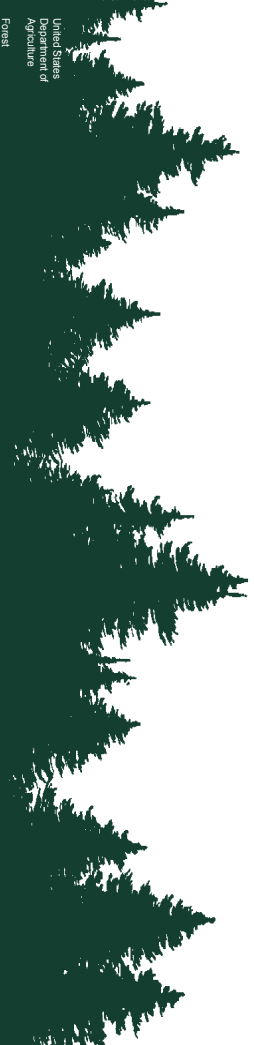
TO:

23.121.400.05/90
Revised/Reprint 2004

United States
Department of
Agriculture
Forest
Service
Intermountain
Region
Ogden, Utah



Camping and Picnicking on the National Forests of Utah



THE NATIONAL FORESTS

America's

Great
Outdoors