

five of the members first appointed—as designated by the President at the time of appointment—serve 2-year terms. The President of the Corporation, appointed by the Board of Directors, is the chief executive officer of the Corporation and serves as an *ex officio* member of the Board of Directors.

The Corporation provides financial assistance to qualified programs furnishing legal assistance to eligible clients and makes grants to and contracts with individuals, firms, corporations, and organizations for the purpose of

providing legal assistance to these clients.

The Corporation establishes maximum income levels for clients based on family size, urban and rural differences, and cost-of-living variations. Using these maximum income levels and other financial factors, the Corporation's recipient programs establish criteria to determine the eligibility of clients and priorities of service based on an appraisal of the legal needs of the eligible client community.

For further information, contact the Office of Communications, Legal Services Corporation, 750 First Street NE., Washington, DC 20002-4250. Phone, 202-336-8800. Fax, 202-336-8959. Internet, <http://www.lsc.gov/>.

SMITHSONIAN INSTITUTION

1000 Jefferson Drive SW., Washington, DC 20560
 Phone, 202-357-2700. Internet, <http://www.si.edu/>.

Board of Regents:

The Chief Justice of the United States
(Chancellor)

The Vice President of the United States
 Members of the Senate

Members of the House of Representatives

Citizen Members

WILLIAM H. REHNQUIST

AL GORE
 THAD COCHRAN, WILLIAM FRIST, D
 ANIEL PATRICK MOYNIHAN

SAMUEL JOHNSON, ROBERT
 LIVINGSTON, (1 VACANCY)

HOWARD H. BAKER, JR., BARBER B.
 CONABLE, JR., ANNE
 D'HARNONCOURT, LOUIS V.
 GERSTNER, JR., HANNA HOLBORN
 GRAY, MANUEL L. IBAÑEZ, H
 OMER A. NEAL, FRANK A.
 SHRONTZ, WESLEY SAMUEL
 WILLIAMS, JR.

Officials:

The Secretary
 The Inspector General
 Director, Office of Planning, Management
 and Budget
 Executive Director for and Development
 Counselor to the Secretary for Biodiversity
 and Environmental Affairs
 Counselor to the Secretary for Electronic
 Communications and Special Projects

I. MICHAEL HEYMAN
 THOMAS D. BLAIR
 L. CAROLE WHARTON

ROBERT V. HANLE
 THOMAS E. LOVEJOY

MARC PACTHER

| | |
|--|--------------------------------|
| Executive Assistant to the Secretary and Director, Smithsonian Institute Building and Arts and Industries Building | JAMES M. HOBBS |
| Personal Assistant to the Secretary | BARBARA CEDERBORG |
| Under Secretary | CONSTANCE NEWMAN |
| General Counsel | JOHN E. HUERTA |
| Director, Office of Government Relations | DONALD L. HARDY |
| Director, Office of Communications/Public Affairs | DAVID J. UMANSKY |
| Chief, Information Technology Operations | GEORGE VAN DYKE |
| Chief, Information Technology Strategic Planning | JIM CONKLIN |
| Senior Business Officer | ROLAND BANSCHER, <i>Acting</i> |
| Ombudsman | CHANDRA HEILMAN |
| Executive Director, Office of Membership and Development | ROBERT V. HANLE |
| Director, Office of Special Events and Conference Services | NICOLE L. KRAKORA |
| Chief Financial Officer | RICK JOHNSON |
| Director, Office of Equal Employment and Minority Affairs | ERA MARSHALL |
| Director, Office of Human Resources | CAROLYN JONES |
| Director, Office of Contracting and Property Management | JOHN W. COBERT |
| Senior Facilities Services Officer | RICHARD RICE |
| Director, Office of Protection Services | DAVID F. MORRELL |
| Director, Office of Environmental Management and Safety | WILLIAM F. BILLINGSLEY |
| Treasurer | SUDEEP ANAND |
| Deputy Comptroller | BOB MILLS |
| Provost | J. DENNIS O'CONNOR |
| Director, Anacostia Museum and Center for African American History and Culture | STEVEN NEWSOME |
| Director, Archives of American Art | RICHARD WATTENMAKER |
| Building Director, Arts and Industries Building | JAMES M. HOBBS |
| Director, Cooper-Hewitt, National Design Museum | DIANNE PILGRIM |
| Director, Freer Gallery of Art and Arthur M. Sackler Gallery | MILO C. BEACH |
| Director, Hirshhorn Museum and Sculpture Garden | JAMES T. DEMETRION |
| Director, National Air and Space Museum | DONALD D. ENGEN |
| Director, National Museum of African Art | ROSLYN A. WALKER |
| Director, National Museum of American Art | ELIZABETH BROUN |
| Curator in Charge, Renwick Gallery | KENNETH R. TRAPP |
| Director, National Museum of American History | SPENCER CREW |
| Director, National Museum of the American Indian | W. RICHARD WEST, JR. |
| Director, National Museum of Natural History | ROBERT W. FRI |
| Director, National Portrait Gallery | ALAN M. FERN |
| Director, National Postal Museum | JAMES BRUNS |
| Director, National Zoological Park | MICHAEL ROBINSON |

| | |
|--|----------------------|
| Director, Office of Exhibits Central | MICHAEL HEADLEY |
| Director, Smithsonian Institution Traveling Exhibition Service (SITES) | ANNA R. COHN |
| Director, Institutional Studies Office | ZAHAVA DOERING |
| Editor, Joseph Henry Papers Project | MARC ROTHENBERG |
| Director, Office of Fellowships and Grants | ROBERTA RUBINOFF |
| Senior Scientist, Smithsonian Environmental Research Center | DAVID L. CORRELL |
| Director, Smithsonian Marine Station | MARY RICE |
| Director, Smithsonian Astrophysical Observatory | IRWIN I. SHAPIRO |
| Director, Smithsonian Tropical Research Institute | IRA RUBINOFF |
| Director, Smithsonian Center for Materials Research and Education | LAMBERTUS VAN ZELST |
| Director, Smithsonian Institution Libraries | NANCY E. GWINN |
| Director, Museum Support Center | CATHERINE J. KERBY |
| Director, Smithsonian Institution Archives | ETHEL W. HEDLIN |
| Director, Smithsonian Office of Education | ANN BAY |
| Director, Center for Folklife and Cultural Heritage | RICHARD KURIN |
| Director, National Science Resources Center | DOUGLAS LAPP |
| Director, Office of International Relations | FRANCINE BERKOWITZ |
| Director, Smithsonian's Affiliates Program | MICHAEL CARRIGAN |
| Director, Smithsonian Center for Latino Initiatives | REFUGIO ROCHIN |
| Counselor to the Provost (Asian/Pacific-American Studies) | FRANKLIN ODO |
| Director, Smithsonian Productions | PAUL JOHNSON |
| Director, Smithsonian Institution Press | PETER CANNELL |
| Editor, Smithsonian Magazine | DON MOSER |
| Publisher, Smithsonian Magazine | RONALD WALKER |
| Director, The Smithsonian Associates | MARA MAYOR |
| The John F. Kennedy Center for the Performing Arts ¹ | |
| Chairman | JAMES A. JOHNSON |
| President | LAWRENCE J. WILKER |
| National Gallery of Art ¹ | |
| President | ROBERT H. SMITH |
| Director | EARL A. POWELL III |
| Woodrow Wilson International Center for Scholars ¹ | |
| Director | LEE H. HAMILTON |
| Deputy Director | MICHAEL H. VAN DUSEN |
| Deputy Director for Planning and Management | DEAN W. ANDERSON |
| Chairman, Board of Trustees | JOSEPH A. CARI, JR. |

More than 150 years old, the Smithsonian Institution is an independent trust instrumentality of the United States that fosters the increase and diffusion of knowledge. The world's largest museum complex, the Smithsonian includes 16 museums and galleries, the National Zoo, and research facilities in several States and

¹ Administered under a separate Board of Trustees.

the Republic of Panama. The Smithsonian holds more than 140 million artifacts and specimens in its trust for the American people. The Institution, a respected center for research, is dedicated to public education, national service, and scholarship in the arts, sciences, and history.

The Smithsonian Institution was created by an act of August 10, 1846 (20 U.S.C. 41 *et seq.*), to carry out the terms of the will of British scientist James Smithson (1765–1829), who in 1826 had bequeathed his entire estate to the United States “to found at Washington, under the name of the Smithsonian Institution, an establishment for the increase and diffusion of knowledge among men.” On July 1, 1836, Congress accepted the legacy and pledged the faith of the United States to the charitable trust.

In September 1838, Smithson’s legacy, which amounted to more than 100,000 gold sovereigns, was delivered to the mint at Philadelphia. Congress vested responsibility for administering the trust in the Secretary of the Smithsonian and the Smithsonian Board of Regents, composed of the Chief Justice, the Vice President, three Members of the Senate, three Members of the House of Representatives, and nine citizen members appointed by joint resolution of Congress.

To carry out Smithson’s mandate, the Institution:

- conducts scientific and scholarly research;
- publishes the results of studies, explorations, and investigations;
- preserves for study and reference more than 140 million artifacts, works of art, and scientific specimens;
- organizes exhibits representative of the arts, the sciences, and American history and culture;
- shares Smithsonian resources and collections with communities throughout the Nation; and
- engages in educational programming and national and international cooperative research.

Smithsonian activities are supported by its trust endowments and revenues; gifts, grants, and contracts; and funds appropriated to it by Congress. Admission to the museums in Washington, DC, is free.

Activities

Anacostia Museum and Center for African American History and Culture

The Museum, located in the historic Fort Stanton neighborhood of southeast Washington, serves as a national resource for exhibitions, historical documentation, and interpretive and educational programs relating to African-American history and culture. The African-American church, the Harlem Renaissance, and jazz have been the subjects of recent exhibitions produced by the Museum.

The Center mounts exhibitions such as “African American Quilters”; sponsors public programs; and collects and studies material (approximately 7,000 objects) representative of the black experience in performing arts and art and culture.

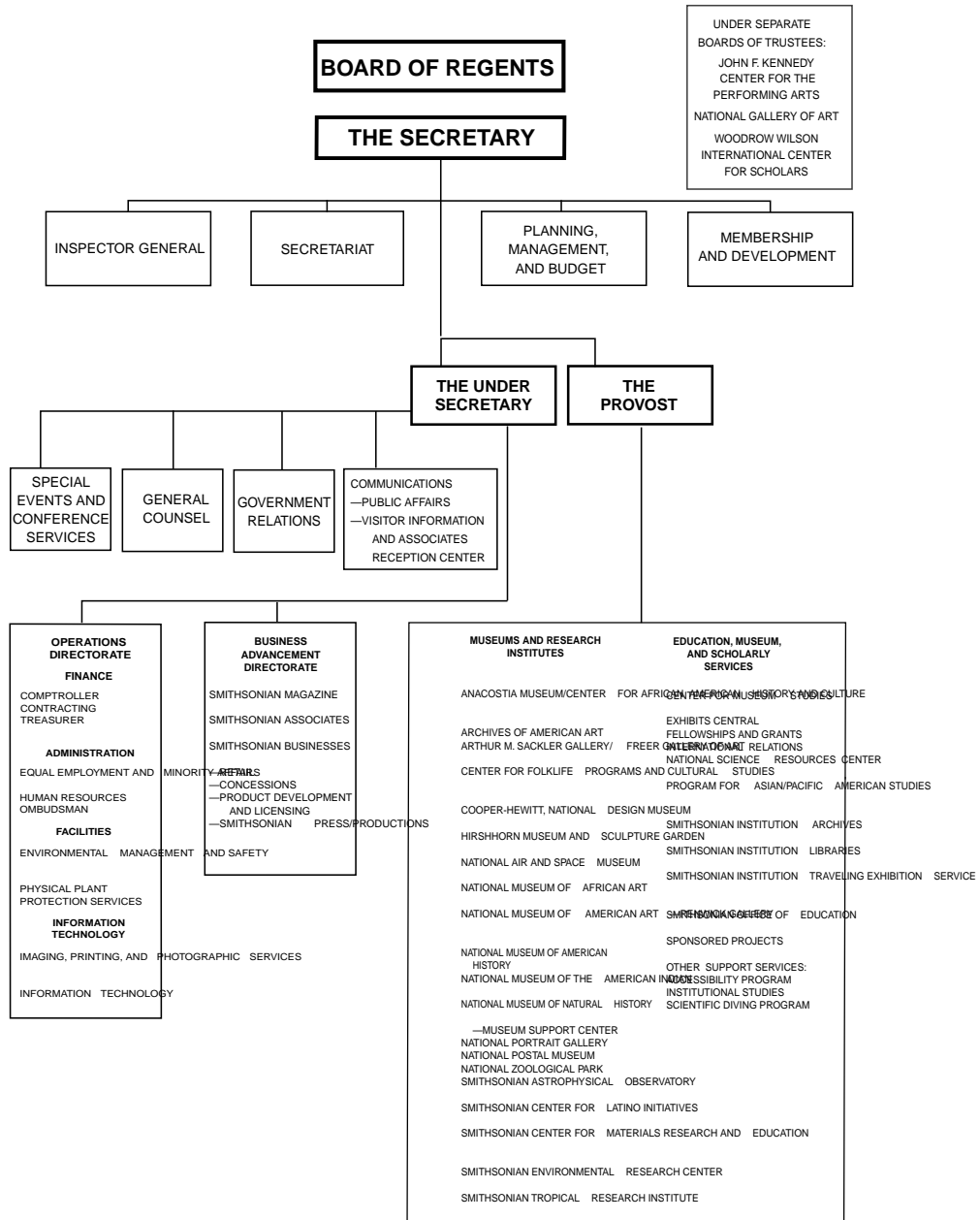
For further information, contact the Anacostia Museum, 1901 Fort Place SE., Washington, DC 20020. Phone, 202-357-2700.

Archives of American Art The Archives contains the Nation’s largest collection of documentary materials reflecting the history of visual arts in the United States. On the subject of art in America, it is the largest archives in the world, holding more than 12 million documents. The Archives gathers, preserves, and microfilms the papers of artists, craftsmen, collectors, dealers, critics, and art societies. These papers include manuscripts, letters, diaries, notebooks, sketchbooks, business records, clippings, exhibition catalogs, transcripts of tape-recorded interviews, and photographs of artists and their work.

The Archives’ chief processing and reference center is in the historic Old Patent Office Building in Washington, DC. The Archives has regional centers in California, Michigan, and New York.

For further information, contact the Archives of American Art, Smithsonian Institution, Washington, DC 20560. Phone, 202-357-2781.

SMITHSONIAN INSTITUTION



Cooper-Hewitt, National Design

Museum The Museum, located in New York City, is the only museum in the country devoted exclusively to historical and contemporary design. Collections include nearly 180,000 objects in such areas as applied arts and industrial design, drawings and prints, glass, metalwork, wallcoverings, and textiles. A major renovation in 1997–1998 has produced a new two-story connecting structure linking the museum with its garden and with two townhouses currently known as the Design Resource Center. Changing exhibitions and public programs seek to educate by exploring the role of design in daily life. The Museum is open daily except Mondays and holidays. Admission is charged.

For further information, contact Cooper-Hewitt, National Design Museum, 2 East Ninety-First Street, New York, NY 10028. Phone, 212-860-6868.

Freer Gallery of Art The building, the original collection, and an endowment were the gift of Charles Lang Freer (1854–1919). The Gallery houses one of the world's most renowned collections of Asian art as well as an important group of ancient Egyptian glass, early Christian manuscripts, and works by James McNeill Whistler and other 19th and early 20th century American artists.

More than 27,000 objects in the Asian collection represent the arts of East Asia, the Near East, and South and Southeast Asia, including paintings, manuscripts, scrolls, screens, ceramics, metalwork, glass, jade, lacquer, and sculpture. Members of the staff conduct research on objects in the collection and publish results in scholarly journals and books for general and scholarly audiences. They arrange thematic exhibitions from the collection and present lectures in their fields of specialization.

For further information, contact the Freer Gallery of Art, Jefferson Drive at Twelfth Street SW., Washington, DC 20560. Phone, 202-357-2700.

Hirshhorn Museum and Sculpture

Garden From cubism to minimalism, the Museum houses major collections of modern and contemporary art. The nucleus of the collection is the gift and bequest of more than 12,000 works of

art for the people of the United States from Joseph H. Hirshhorn (1899–1981).

Supplementing the permanent collection, which keeps up with current developments through an active acquisitions program, are loan exhibitions focusing on emerging contemporary artists as well as on art movements of the modern era. The Museum houses a collection research facility, a specialized art library, and a photographic archive, available for consultation by prior appointment.

The outdoor sculpture garden is located nearby on the National Mall. Among its works is the famous "Burghers of Calais" by Auguste Rodin.

There is an active program of public service and education, including docent tours, lectures on contemporary art and artists, and films of historic and artistic interest.

For further information, contact the Hirshhorn Museum and Sculpture Garden, Seventh Street and Independence Avenue SW., Washington, DC 20560. Phone, 202-357-2700.

National Air and Space Museum

Created to memorialize the development and achievements of aviation and space flight, the Museum collects, displays, and preserves aeronautical and space flight artifacts of historical significance as well as documentary and artistic materials related to air and space.

Among its nearly 33,000 artifacts are full-size planes, models, and instruments. Highlights of the collection include the Wright brothers' *Flyer*, Charles Lindbergh's *Spirit of St. Louis*, a Moon rock, and Apollo spacecraft. The exhibitions and study collections record human conquest of the air from its beginnings to recent achievements by high altitude aircraft, guided missiles, rockets, satellites, and manned space flight. The principal areas in which work is concentrated include flight craft of all types, manned and unmanned; space flight vehicles; and propulsion systems.

Recent blockbuster exhibitions at this most popular museum have included "Star Wars: The Magic of Myth" and "Star Trek." The Museum's Langley Theater, with a giant screen presentation,

and the 70-foot domed Einstein Planetarium are popular attractions.

For further information, contact the National Air and Space Museum, Sixth Street and Independence Avenue SW., Washington, DC 20560. Phone, 202-357-2700.

National Museum of African Art This is the only art museum in the United States dedicated exclusively to portraying the rich, creative visual traditions of Africa.

Established in 1964 and incorporated as a bureau of the Smithsonian in 1979, the Museum opened at its new location on the National Mall in September 1987. Its research components, collection, exhibitions, and public programs establish the Museum as a primary source for the examination and discovery of the arts and culture of Africa. In recent years, works of outstanding aesthetic quality have been added to a collection numbering about 7,000 works in wood, metal, fired clay, ivory, and fiber. Examples of traditional art include a wooden figure of a Zairian Yombe carver; a Lower Niger Bronze Industry vessel, with chameleons; and a memorial figure from the Cameroon grassfields.

The Eliot Elisofon Photographic Archives includes some 100,000 slides, photos, and film segments on Africa. There is also a specialized library of more than 18,000 volumes and periodicals.

For further information, contact the National Museum of African Art, 950 Independence Avenue SW., Washington, DC 20560. Phone, 202-357-2700.

National Museum of American Art The Museum's art collection spans centuries of American painting, sculpture, folk art, photography, and graphic art. A Puerto Rican religious image (17th century) is now the oldest object in the Museum's collection. The permanent collection includes more than 37,000 works of art. Special exhibitions such as "Picturing New England: Image and Memory" are presented each year.

A major center for research in American art, the Museum has contributed to such resources as the Inventory of American Paintings

Executed Before 1914, with data on nearly 260,000 works; the Slide and Photographic Archives; the Smithsonian Art Index; and the Inventory of American Sculpture, with information on more than 50,000 indoor and outdoor works. The library, shared with the National Portrait Gallery, contains volumes on art, history, and biography, with special emphasis on the United States. The Old Patent Office Building, home to both the National Museum of American Art and the National Portrait Gallery also houses the Archives of American Art, with its vast holdings of documentary material on American art and artists. In 2000, the building will undergo a major renovation.

The Museum makes hundreds of images from the collection and extensive information on its collections, publications, and activities available electronically to personal computer users (Internet, <http://www.nmaa.si.edu/>) and commercial online services. There is a research program for visiting scholars, and university interns are welcomed in many museum departments.

For further information, contact the National Museum of American Art, Eighth and G Streets NW., Washington, DC 20560. Phone, 202-357-2700.

Renwick Gallery The Gallery, located at 17th Street and Pennsylvania Avenue NW., Washington, DC, is dedicated to exhibiting crafts of all periods and to collecting 20th century American crafts. It offers changing exhibitions of American crafts and decorative arts, both historical and contemporary, and a rotating selection from its permanent collection. The Gallery's Grand Salon is elegantly furnished in the Victorian style of the 1860's and 1870's.

For further information, contact the National Museum of American Art, Eighth and G Streets NW., Washington, DC 20560. Phone, 202-357-2700.

National Museum of American History In pursuit of its fundamental mission to inspire a broader understanding of the United States and its people, the Museum provides learning opportunities, stimulates the imagination of visitors, and presents challenging ideas about the Nation's past. The Museum's exhibits,

including "Communities in a Changing Nation: The Promise of 19th Century America" and "A Collector's Vision of Puerto Rico," provide a unique view of the American experience and are developed from a "nation of nations" collections base. Emphasis is placed upon innovative individuals—representing a wide range of cultures—who have shaped our heritage, and upon science and the remaking of our world through technology.

Exhibits draw upon strong collections (around 3 million artifacts) in the sciences and engineering, agriculture, manufacturing, transportation, political memorabilia, costumes, musical instruments, coins, photography, ceramics, and glass. Classic cars, First Ladies' gowns, musical instruments, the Star-Spangled Banner flag, Whitney's cotton gin, Morse's telegraph, the John Bull locomotive, and other American icons are highlights of the collection. Political, social, military, and cultural history are also represented. Major installations treat everyday life in America just after the Revolutionary War, the Industrial Revolution, the Information Age, the White House, and science in American life. Hands-on activities, demonstrations, films, and performances highlight many aspects of the Museum's collections. The Smithsonian Jazz Masterworks Orchestra is also located at the Museum.

Scholars may be aided in the use of the Museum's research collections and specialized library facilities by appointment.

For further information, contact the National Museum of American History, Fourteenth Street and Constitution Avenue NW., Washington, DC 20560. Phone, 202-357-2700.

National Museum of the American Indian The Museum was established by act of November 28, 1989 (20 U.S.C. 80q *et seq.*). It will be located in three places:

- the George Gustav Heye Center, located at One Bowling Green, New York City, which is currently open;
- the Cultural Resources Center in Suitland, MD, which will open in 1999 and eventually house a major portion of

the Museum's priceless million-object collection; and

—the Mall museum, which will open in 2001 on the National Mall's last available site.

The Museum, whose collections were transferred to the Smithsonian from the former Museum of the American Indian, Heye Foundation, in New York City, is an institution of living cultures dedicated to the collection, preservation, study, and exhibition of the life, languages, literature, history, and arts of the Native peoples of the Americas.

Highlights include Northwest Coast carvings; dance masks; pottery and weaving from the Southwest; painted hides and garments from the North American Plains; goldwork of the Aztecs, Incas, and Maya; and Amazonian featherwork.

The Heye Center presents a biennial Native American film and video festival in New York City. Heye Center admission is free. For information on hours, call 212-825-6700 (New York City) or 202-357-2700 (Washington, DC).

For further information, contact the National Museum of the American Indian, Suite 7102, 470 L'Enfant Plaza SW., Washington, DC 20560. Phone, 202-287-2523 or 202-357-2700.

National Museum of Natural History Dedicated to understanding the natural world and the place of humans in it, this museum is a popular field trip destination for school groups and families as well as naturalists and the scholarly. The Museum's permanent exhibits focus on human cultures, Earth sciences, biology, and anthropology, with the most popular displays featuring gemstones such as the Hope diamond, dinosaurs, marine ecosystems, birds, and mammals. Notable attractions include the O. Orkin Insect Zoo, where a variety of arthropods live in realistic habitats; the new Janet Annenberg Hooker Hall of Geology, Gems, and Minerals; and the Discovery Room, where visitors can handle specimens and artifacts. The Museum also hosts a variety of special exhibitions, such as "Amber: Window to the Past" and "Ocean Planet." A new

IMAX theater offers large-format nature films.

The public displays represent only a small portion of the national collections housed and maintained by the Museum. These encyclopedic collections comprise more than 122 million specimens, making the Museum one of the world's foremost facilities for natural history research. Museum departments include anthropology, botany, paleobiology, entomology, vertebrate and invertebrate zoology, and mineral sciences. Doctorate-level staff researchers ensure the continued growth and value of the collection by conducting studies in the field and laboratory. Expeditions such as the current search for living giant squids take Smithsonian Institution scientists to intriguing locations around the world. The Museum maintains permanent research facilities in Alaska, Florida, Belize, and Africa, among other sites.

The Museum's Naturalist Center in Leesburg, VA, invites visitors ages 10 and up to investigate hands-on collections of natural history objects. For more information, call 703-779-9712.

For further information, contact the National Museum of Natural History, Tenth Street and Constitution Avenue NW., Washington, DC 20560. Phone, 202-357-2700.

National Portrait Gallery The Gallery was established by act of April 27, 1962 (20 U.S.C. 75a), as a museum of the Smithsonian Institution "for the exhibition and study of portraiture depicting men and women who have made significant contributions to the history, development, and culture of the people of the United States." The Gallery contains nearly 18,000 works, including photographs and glass negatives. It is housed in one of the oldest Government structures in Washington, the Old Patent Office Building, which is to undergo a major renovation in 2000.

The first floor of the Gallery is devoted to changing exhibitions from the Gallery's collection of paintings, sculpture, prints, photographs, and drawings as well as to special portrait collections. On the second floor are featured the permanent collection of

portraits of eminent Americans and the Hall of Presidents. The two-story American Victorian Renaissance Great Hall on the third floor of the gallery houses a Civil War exhibit (on the mezzanine), and is used for special events and public programs.

A large library is shared with the National Museum of American Art and the Archives of American Art. The education department offers public programs; outreach programs for schools, senior adults, hospitals, and nursing homes; and walk-in and group tours.

For further information, contact the National Portrait Gallery, Eighth and F Streets NW., Washington, DC 20560. Phone, 202-357-2700.

National Postal Museum The Museum houses the Nation's postal history and philatelic collection, the largest of its kind in the world, with more than 13 million objects. The Museum is devoted to the history of America's mail service, and major galleries include exhibits on mail service in colonial times and during the Civil War, the Pony Express, modern mail service, automation, mail transportation, and the art of letters, as well as displays of the Museum's priceless stamp collection.

Highlights include three mail planes, a replica of a railway mail car, displays of historic letters, handcrafted mail boxes, and rare U.S. and foreign issue stamps and covers.

Located on Capitol Hill next to Union Station, the Postal Museum is geared for a family audience. A state-of-the-art museum setting offers more than 40 videos and interactive displays, as well as a museum shop, a stamp retail store, and a discovery center for educational programs, lectures, and performances.

For further information, contact the National Postal Museum, 2 Massachusetts Avenue NE., Washington, DC 20560. Phone, 202-357-2700.

National Zoological Park The National Zoo encompasses 163 acres along Rock Creek Park in Northwest Washington, DC. Established in 1889, the Zoo, one of the oldest branches of the Smithsonian Institution, is developing into a biopark with live animals, botanic gardens and

aquaria, and artworks with animal themes. The collection today encompasses 5,000 animals and 500 species, ranging in size and diversity from leaf-cutter ants to giraffes, giant pandas, elephants, and rhinos. Recent exhibits include "Amazonia," a simulated tropical rain forest; "Think Tank," an exhibit focusing on animal thinking; the "Pollinarium" exhibit; and the Reptile Discovery Center, featuring the world's largest lizards, Komodo dragons. The Zoo's exhibits are supported by scientific investigations conducted at the Zoo's Department of Zoological Research. Work focusing on genetics, animal behavior, and reproductive studies has given the National Zoo a leadership role among the Nation's conservation institutions.

In addition to the animals living at its Washington facilities, the Zoo's Conservation and Research Center located on 3,200 acres near Front Royal, VA, houses additional rare and endangered species. Research at the Center explores animal behavior, ecology, nutrition, reproductive physiology, pathology, and clinical medicine. The Center also conducts research into the long-term maintenance of wild animal populations and captive-breeding. It operates a training program for wildlife professionals from other countries, including those with endangered and rare wildlife.

For further information, contact the National Zoo, 3000 Connecticut Avenue NW., Washington, DC 20008. Phone, 202-673-4717. E-mail, listserv@sivm.si.edu. Internet, www.si.edu/natzoo/.

Office of Fellowships and Grants This office develops and administers the numerous Smithsonian programs designed to assist scholars and students from the United States and throughout the world in utilizing the Institution's unique resources. These academic programs, which include long- and short-term appointments, are an important complement to those offered by universities and support participants' research in art, history, and science.

Predocctoral, postdoctoral, and graduate student fellowship programs provide scholars and students the

opportunity to conduct research on independently conceived projects at Smithsonian facilities in conjunction with the Institution's research staff.

The Office of Fellowships and Grants offers internships aimed at increasing minority participation in ongoing Smithsonian research activities and fields of interest. These include the Latino Studies Fellowship Program, the Native American Awards Program, and the Minority Internship Program.

For further information, contact the Office of Fellowships and Grants, Suite 7000, 955 L'Enfant Plaza SW., Washington, DC 20560. Phone, 202-287-3271. Internet, <http://www.si.edu/research+study/>.

Center for Folklife and Cultural Heritage

The Center is responsible for research, documentation, and presentation of grassroots cultural traditions. It maintains a documentary collection and produces Smithsonian Folkways Recordings, educational materials, documentary films, publications, and traveling exhibits, as well as the annual Smithsonian Folklife Festival on the National Mall. Recent Folklife Festivals have featured a range of American music styles, a number of State tributes, and performers from around the world. Admission to the festival is free. The 2-week program includes Fourth of July activities on the National Mall.

For further information, contact the Center for Folklife and Cultural Heritage, Suite 2600, 955 L'Enfant Plaza SW., Washington, DC 20560. Phone, 202-287-3424 or 202-357-2700. To purchase recordings, call 800-410-9815.

International Center The International Center supports Smithsonian activities abroad and serves as liaison for the the Smithsonian's international interests. The Smithsonian seeks to encourage a broadening of public understanding of the histories, cultures, and natural environments of regions throughout the world. The International Center provides a meeting place and an organizational channel to bring together the world's scholars, museum professionals, and the general public, to attend and participate

in conferences, public forums, lectures, and workshops.

For further information, contact the Office of International Relations, MRC 705, 1100 Jefferson Drive SW., Washington, DC 20560. Phone, 202-357-1539.

Center for Museum Studies The Center is an outreach office of the Smithsonian that helps museums in the United States fulfill their public service mission. It conducts training programs for museum professionals on museum operational methods, management of collections, exhibitions techniques, and educational activities.

The Center also operates a Central Referral Service for the more than 500 Smithsonian Institution internships offered each year.

Located in the Center is the Smithsonian Institution Libraries Museum Reference Center Branch, the Nation's largest museological library.

For further information, contact the Center for Museum Studies, 900 Jefferson Drive SW., Room 2235, MRC 427, Smithsonian Institution, Washington, DC 20560. Phone, 202-357-3101.

Arthur M. Sackler Gallery This Asian art museum opened in 1987 on the National Mall. Changing exhibitions drawn from major collections in the United States and abroad, as well as from the permanent holdings of the Sackler Gallery, are displayed in the distinctive below-ground museum. The Gallery's growing permanent collection is founded on a group of art objects from China, South and Southeast Asia, and the ancient Near East that was given to the Smithsonian by Arthur M. Sackler (1913-1987), a medical researcher, publisher, and art collector. The Museum's current collection of more than 2,500 artworks features Persian manuscripts; Japanese paintings; ceramics, prints, and textiles; sculptures from India; and paintings and metalware from China, Korea, Japan, and Southeast Asia. The Sackler Gallery is connected by an underground exhibition space to the neighboring Freer Gallery.

Programs at the Gallery include loan exhibitions and major international shows offering both surveys of distinctive Asian traditions and comparative

exhibitions showing the art of different centuries, geographic areas, and types of patronage. Many exhibitions are accompanied by public programs and scholarly symposia.

For further information, contact the Arthur M. Sackler Gallery, 1050 Independence Avenue SW., Washington, DC 20560. Phone, 202-357-2700.

Smithsonian Institution Archives The Smithsonian Institution Archives acquires, preserves, and makes available for research the official records of the Smithsonian Institution and the papers of individuals and organizations associated with the Institution or with its work. These holdings document the growth of the Smithsonian and the development of American science, history, and art.

The Institutional History Division explores the history of the Smithsonian by drawing upon the holdings of the Archives and by creating new historical records such as audio and videotaped interviews. Within the Division, the Joseph Henry Papers publishes the correspondence and papers of the Smithsonian's first Secretary, a renowned 19th century scientist.

The National Collections Program assists in and monitors the development of effective collections management policy throughout the Institution and the museum community at large.

For further information, contact the Smithsonian Institution Archives, MRC 414, 900 Jefferson Drive SW., Washington, DC 20560. Phone, 202-357-1420. Fax, 202-357-2395.

Smithsonian Astrophysical Observatory The Observatory is located in Cambridge, MA, on the grounds of the Harvard College Observatory. Since 1973, the observatories have coordinated research activities under a single director in a cooperative venture known as the Harvard-Smithsonian Center for Astrophysics where more than 300 scientists conduct research in astronomy, astrophysics, and Earth and space sciences.

The Center's research activities are organized in seven divisions, as follows: atomic and molecular physics, radio and geoastronomy, high-energy astrophysics, optical and infrared astronomy, planetary

sciences, solar and stellar physics, and theoretical astrophysics.

Data-gathering facilities include the Fred Lawrence Whipple Observatory in Arizona, optical and radio astronomy facilities in Massachusetts, and a submillimeter-wave facility in Hawaii (now under construction). The Smithsonian Astrophysical Observatory's observational capabilities are complemented by library, computation, and laboratory facilities.

Research results are published in the *Center Preprint Series* and other technical and nontechnical bulletins, and distributed to scientific and educational institutions around the world. As a further service to international science, the Smithsonian Astrophysical Observatory serves as the headquarters for Astronomical Telegrams and the Minor Planet Center.

Astronomical Telegrams provide rapid international dissemination of news about the discovery of comets, novae, and other astronomical phenomena. The Minor Planet Center is the principal source for all positional observations of asteroids as well as for establishing their orbits and ephemerides.

The Observatory offers an extensive public education program, including an extensive collection of astronomical images on the World Wide Web (Internet, <http://cfa-www.harvard.edu/images/>).

For more information, contact the Smithsonian Astrophysical Observatory, 60 Garden Street, Cambridge, MA 02138. Phone, 617-495-7461. Internet, <http://cfa-www.harvard.edu/>.

Smithsonian Center for Materials Research and Education The Center is a Smithsonian research institute with a focus on the preservation, conservation, and technical study and analysis of collection materials, with a special emphasis on materials in the national collections. Its researchers investigate the chemical and physical processes that are involved in the care of art, artifacts, and specimens, and attempt to formulate conditions and procedures for storage, exhibit, and stabilization that optimize the preservation of these objects. In interdisciplinary collaborations with

archaeologists, anthropologists, and art historians, natural and physical scientists study and analyze objects from the collections and related materials to expand knowledge and understanding of their historical and scientific context. In 1983, the Center embarked on a mission of independently formulated programs in research and education in conservation and scientific studies of collection materials. It now serves professional audiences nationwide and internationally. The Center provides active analytical and technical support to conservation and curation efforts in the various Smithsonian Institution museums.

The Center's education program offers a wide range of training opportunities, within the areas of its specialty, to professionals in conservation and related museum disciplines.

For further information, contact the Smithsonian Center for Materials Research and Education, Museum Support Center, Suitland, MD 20746. Phone, 301-238-3700.

Smithsonian Environmental Research Center (SERC) The Center measures physical, chemical, and biological interactions in the environment and determines how these interactions control biological responses. This research is carried out on the shore of the Chesapeake Bay. SERC is dedicated to increasing knowledge of the biological and physical processes that sustain life on Earth. The Center trains future generations of scientists to address ecological questions of the Nation and the globe.

For further information, contact the Smithsonian Environmental Research Center, 647 Contees Wharf Road, Edgewater, MD 21037. Phone, 401-798-4424. Internet, <http://www.serc.si.edu/>.

Smithsonian Institution Libraries The libraries of the Smithsonian Institution include more than one million volumes (among them 40,000 rare books) with strengths in natural history, art, science, humanities, and museology. The systems' administrative services and Central Reference and Loan are located in the National Museum of Natural History with 19 branch libraries located in most of the major Smithsonian

museums and research institutes including the Smithsonian Tropical Research Institute in the Republic of Panama and the Botany Branch in the National Museum of Natural History. Many volumes are available through interlibrary loan.

For further information, contact the Smithsonian Institution Libraries, Tenth Street and Constitution Avenue NW., Washington, DC 20560. Phone, 202-357-2139. Internet, <http://www.sil.si.edu/>. E-mail, libhelp@sil.si.edu.

Smithsonian Institution Traveling Exhibition Service (SITES) Since 1952, SITES has been committed to making Smithsonian exhibitions available to millions of people who cannot view them firsthand at the Smithsonian museums in Washington, DC, and New York City. Each year, audiences across North America experience the treasures and opportunities of the Smithsonian by visiting SITES exhibitions that come to local museums, libraries, science centers, historical societies, zoos, aquariums, community centers, and schools. Exhibitions on art, history, and science (including such exhibits as "Full Deck Art Quilts," "Red, Hot, and Blue: A Salute to American Musicals," and "Spiders!") travel to more than 250 sites each year. SITES also offers exhibits in its International Gallery on the National Mall, in the S. Dillon Ripley Center (located at 1100 Jefferson Drive SW.)

For further information, to book a SITES exhibition, or to receive a copy of *Update*, the annual catalog of current exhibitions, contact the Smithsonian Institution Traveling Exhibition Service, MRC 706, Smithsonian Institution, Washington, DC 20560. Phone, 202-357-3168. Internet, <http://www.si.edu/organiza/offices/sites/>.

Smithsonian Marine Station The research institute is located in a new facility on South Causeway Island in Fort Pierce, FL, and features a state-of-the-art laboratory. Scientists at the Station catalog species and study marine plants and animals. Among the most important projects being pursued at the site is the search for possible causes of fish kills such as *pfiesteria* and other organisms. National Museum of Natural History scientists also conduct research at the Station. While at the new facility, which

includes an aquarium, a wet lab, electron microscopes, and conference rooms, more than 100 visiting scientists will be able to investigate plants and animals in the Indian river and ocean environments and study the physical processes associated with these habitats.

For further information, contact the Smithsonian Marine Station, 701 Seaway Drive, Fort Pierce, FL 34946. Phone, 561-465-6632.

Smithsonian Tropical Research Institute (STRI) The Institute is a research organization for advanced studies of tropical ecosystems. Headquartered in the Republic of Panama, STRI maintains extensive facilities in the Western Hemisphere tropics. It is the base of a corps of tropical researchers, who in turn provide an intellectual environment that attracts many visiting scientists and research fellows. The Institute's researchers study the evolution, behavior, ecology, and history of tropical species of systems ranging from coral reefs to rain forests. Work at STRI has increased our knowledge of the ways tropical plants respond to increased carbon dioxide in the atmosphere; how life adapts in the high-forest canopy; the life of a coral reef; and other complex biological processes.

The Institute operates the Barro Colorado Nature Monument, a 12,000-acre forest reserve, including Barro Colorado Island (protected since 1923) and adjacent peninsulas in Gatun Lake, part of the Panama Canal. It also maintains a research and conference center in Panama City, including one of the world's finest libraries on rain forests and related topics. In addition, STRI has two marine laboratories, one at Naos Island on the Pacific entrance to the Panama Canal and another at Galeta Island on the Atlantic. On December 31, 1999, as required by treaty, the Canal transfers to Panama. The Government of Panama has stated that it wishes STRI to continue its activities on the isthmus beyond the year 2000. STRI also operates marine stations in the Caribbean in the San Blas Islands, and at Cayos Cochinos, Honduras, and maintains a 96-foot research vessel for off-shore studies. The Institute's scientific

staff conducts research in these tropical areas as well as in other parts of Central and South America, the Pacific, Asia, and Africa. Comparative studies are clarifying the distinctive role of the tropics.

For further information, contact the Smithsonian Tropical Research Institute, 900 Jefferson Drive SW., MRC 555, Washington, DC 20560. Phone, 202-786-2817. Fax, 202-786-2819. Phone (Panama), 011-507-62-6022. Internet, <http://www.si.edu/stril/>. E-mail, visitors@tivoli.si.edu.

The John F. Kennedy Center for the Performing Arts The Center, the sole official memorial in Washington to President Kennedy, is an independent bureau of the Smithsonian Institution, administered by a 49-member Board of Trustees.

In a public/private partnership, the Federal Government provides appropriated fund support for the maintenance and operation of the physical facilities of the Presidential monument, while the Board of Trustees is responsible for raising private funds for all of the artistic initiatives. Additional funds for programming and education are derived through box office sales and other earned income, and other government grants. The Center's Board is responsible for administration of the building and for performing arts programming and education.

Since its opening in 1971, the Center has presented a year-round program of the finest in music, dance, and drama from the United States and abroad. Facilities include the Opera House, the Eisenhower Theater, the American Film Institute Theater, the Terrace Theater, the Theater Lab, and the Concert Hall, home of the Center's affiliate, the National Symphony Orchestra.

The Center's Education Department includes the nationwide Performing Arts Centers and Schools: Partners in Education, American College Theater Festival, Youth and Family Programs, the National Symphony Orchestra Education Program, and the Kennedy Center Alliance for Arts Education Network, designed to increase participation by students throughout the country in Center activities and to establish the

Center as a focal point for strengthening the arts in education at all levels.

The Kennedy Center box offices are open daily, and general information and tickets may be obtained by calling 202-467-4600 or 202-416-8524 (TDD). Full-time students, senior citizens over the age of 65, enlisted personnel of grade E-4 and below, fixed low-income groups, and the disabled may purchase tickets for most performances at a 50-percent discount through the Specially Priced Ticket Program. This program is designed to make the Center accessible to all, regardless of economic circumstance.

Visitor services are provided by the Friends of the Kennedy Center volunteers. Tours are available free of charge between 10 a.m. and 5 p.m. on weekdays and between 10 a.m. and 1 p.m. on weekends. Free performances are given every day at 6 p.m. on the Millennium Stage in the Grand Foyer.

For further information, contact the Kennedy Center. Phone, 202-467-4600. Internet, <http://www.kennedy-center.org/>.

National Gallery of Art The National Gallery of Art is governed by a Board of Trustees composed of five Trustees and the Secretary of State, the Secretary of the Treasury, the Chief Justice of the United States, and the Secretary of the Smithsonian Institution. It houses one of the finest collections in the world, illustrating Western man's achievements in painting, sculpture, and the graphic arts. The collections, beginning with the 13th century, are rich in European old master paintings and French, Spanish, Italian, American, and British 18th- and 19th-century paintings; sculpture from the late Middle Ages to the present; Renaissance medals and bronzes; Chinese porcelains; and about 75,000 works of graphic art from the 12th to the 20th centuries. The collections are acquired by private donation rather than by Government funds, which serve solely to operate and maintain the building and its collections.

The National Gallery's West Building, designed by John Russell Pope in neoclassical style, was a gift to the Nation from Andrew W. Mellon, who

also bequeathed his collection to the gallery in 1937. On March 17, 1941, President Franklin D. Roosevelt accepted the completed building and works of art on behalf of the people of the United States of America.

The National Gallery's East Building, designed by I.M. Pei, was accepted by President Jimmy Carter in June of 1978 as a gift of Paul Mellon and the late Ailsa Mellon Bruce, son and daughter of the gallery's founder, and the Andrew W. Mellon Foundation. The East Building provides space for temporary exhibitions, the gallery's growing collections, the Center for Advanced Study in the Visual Arts, including greatly expanded library and photographic archives, and administrative and curatorial offices.

A professor-in-residence position is filled annually by a distinguished scholar in the field of art history; graduate and postgraduate research is conducted under a fellowship program; programs for schoolchildren and the general public are conducted daily; and an Extension Service distributes loans of audiovisual materials, including films, slide lectures, and slide sets throughout the world. Publications, slides, and reproductions may be obtained through the Publications Service.

The Micro Gallery, located in the West Building, is the most comprehensive interactive multimedia computer system in any American art museum. Thirteen computers, installed in the redesigned art information room near the Mall entrance, enable visitors to see in magnified detail nearly every work of art on display in the permanent collection, as well as access to information about artists, geographic areas, time periods, pronunciations (with sound), and more. Visitors can design a personal tour of the collection and print it out to use as a guide in the galleries. For information, call 202-842-6188 or 202-842-6653.

For general information on the National Gallery of Art and its activities, call 202-737-4215. Internet, <http://www.nga.gov/>.

Woodrow Wilson International Center for Scholars The Center, located in

Washington, DC, is the Nation's official memorial to its 28th President. The Center's mandate is to integrate the world of learning with the world of public affairs. Through meetings and conferences, the Center brings scholars together with Members of Congress, Government officials, business leaders, and other policymakers. Through publication of books and the *Wilson Quarterly* and a nationally broadcast radio program, the results of the Center's research and meetings are made publicly available.

The Center awards approximately 20 residential fellowships annually to individuals with project proposals representing the entire range of superior scholarship, with a strong emphasis on the humanities and social sciences.

Applications from any country are welcome. Persons with outstanding capabilities and experience from a wide variety of backgrounds (including government, the corporate world, academia, and other professions) are eligible for appointment. For academic participants, eligibility is limited to the postdoctoral level.

The Center prefers its fellows to be in residence for the academic year—September to May or June—although a few fellowships are available for shorter periods of not less than 4 months.

The Center holds one round of competitive selection per year. The deadline for the receipt of applications is October 1, and decisions on appointments are announced in March of the following year.

For further information, contact the Fellowship Office, Woodrow Wilson Center, One Woodrow Wilson Plaza, 1300 Pennsylvania Avenue NW., Washington, DC 20523. Phone, 202-691-4170. Fax, 202-691-4001. Internet, <http://wwics.si.edu/>.

Sources of Information

Contracts and Small Business Activities

Information may be obtained from the Director, Office of Contracting, Smithsonian Institution, Washington, DC 20560, regarding procurement of supplies; contracts for construction, services, etc.; and property management and utilization services for Smithsonian Institution organizations.

The following independent organizations should be contacted directly: John F. Kennedy Center for the Performing Arts, Washington, DC 20566; and Supply Officer, National Gallery of Art, Sixth Street and Constitution Avenue NW., Washington, DC 20565. Phone, 202-287-3343.

Education and Research Refer to preceding statements on the Office of Fellowships and Grants, the Center for Folklife and Cultural Heritage, the National Science Resources Center, the Smithsonian Education Office, and other offices. For information, write to the Directors of these offices at the Smithsonian Institution, Washington, DC 20560.

For information regarding Kennedy Center Education Programs, both in Washington, DC, and in nationwide touring productions and training, contact the John F. Kennedy Center for the Performing Arts, Washington, DC 20566 (phone, 202-416-8000).

The National Gallery of Art's Center for Advanced Study in the Visual Arts was founded in 1979 to promote study of the history, theory, and criticism of art, architecture, and urbanism through the formation of a community of scholars. The activities of the Center for Advanced Study, which include the fellowship program, meetings, research, and publications, are privately funded. For further information, contact the Center for Advanced Study in the Visual Arts, National Gallery of Art, Washington, DC 20565. Phone, 202-842-6480; or fax, 202-842-6733.

Electronic Access Information about the Smithsonian Institution is available electronically through the Internet, at <http://www.si.edu/>.

Information about programs, activities, and performances at the John F. Kennedy Center for the Performing Arts is available through the Internet, at <http://www.kennedy-center.org/>.

Information about the National Gallery of Art is available through the Internet, at <http://www.nga.gov/>.

Information about the programs and activities of the Woodrow Wilson Center for International Scholars is available

through the Internet, at <http://wwics.si.edu/>.

Employment Employment information for the Smithsonian is available from the Office of Human Resources, Smithsonian Institution, Suite 2100, 955 L'Enfant Plaza SW., Washington, DC 20560. Phone, 202-287-3100. Recorded message, 202-287-3102.

Employment information for the following locations may be obtained by contacting the organizations directly as follows: Personnel Office, National Gallery of Art, Fourth Street and Constitution Avenue NW., Washington, DC 20565 (phone, 202-842-6298; or for the hearing impaired (TDD), 202-789-3021); and the John F. Kennedy Center for the Performing Arts, Human Resources Department, Washington, DC 20566 (phone, 202-416-8610).

Films The National Gallery of Art circulates films, slide programs, videos, teaching packets, and videodiscs to schools and civic organizations throughout the country. Contact the Department of Education Resources, National Gallery of Art, Washington, DC 20565. Phone, 202-842-6273. Please write to request a free catalog of programs.

Memberships For information about Smithsonian membership (Resident Program), write to The Smithsonian Associates, MRC 701, 1100 Jefferson Drive SW., Washington, DC 20560. Phone, 202-357-3030. The Resident Program offers a wide variety of ticketed performances, courses, lectures, seminars, films, and guided tours with specialists, authors, celebrities, and other notables. Additional activities include a lecture series for senior adults; classes, workshops, films, and summer camp sessions for young people; and family and adult/child activities. Membership benefits include ticket discounts and event admissions priority; a subscription to *Smithsonian* magazine; monthly copies of *The Smithsonian Associate*, the award-winning guide to Resident Associate activities; and dining privileges. Additionally, all members receive discounts on museum shop purchases; *Smithsonian Catalog* items;

Smithsonian Institution Press publications and recordings; and discounts on subscriptions to *Air and Space/Smithsonian* magazine. The Smithsonian Associates also offer volunteer opportunities and special services for individuals with disabilities.

For information about Smithsonian membership (National Program), call 202-357-4800. National membership benefits include a subscription to *Smithsonian* magazine; services from the Visitor Information and Associates' Reception Centers; eligibility to travel on international and U.S. study tours and seminars guided by expert study leaders; discounted tickets for Smithsonian educational events nationwide; and shopping and dining privileges.

The Contributing Membership offers additional opportunities to support the Smithsonian Institution. Contributing members, at various levels, receive an array of benefits—from receiving quarterly issues of *Smithsonian Institution Research Reports* to being invited to the annual James Smithson weekend and other special events. For information about the Contributing Membership, call 202-357-1699.

The Young Benefactors of the Smithsonian Institution offers individuals between the ages of 25 and 45 the opportunity to increase their understanding of the Institution and to participate in unique fundraising events that assist the Institution in achieving its goals. For additional information about the Young Benefactors, call 202-357-1351.

The Circle of the National Gallery of Art is a membership program which provides support for special projects for which Federal funds are not available. Since its inception in 1986, the Circle has provided support for scholarly exhibitions, acquisitions of works of art, publications, films, and symposia at the Gallery's Center for Advanced Study in the Visual Arts. For more information about membership in the Circle of the National Gallery of Art, please write to The Circle, National Gallery of Art, Washington, DC 20565; or call 202-842-6450.

Information about activities of the Friends of the National Zoo and their magazine, *The Zoogoer*, is available by writing to FONZ at the National Zoological Park, Washington, DC 20008. Phone, 202-673-4950.

Information about the national and local activities of Friends of the Kennedy Center (including the bimonthly *Kennedy Center News* for members) is available at the information desks within the Center or by writing to Friends of the Kennedy Center, Washington, DC 20566.

Photographs Color and black-and-white photographs and slides are available to Government agencies, research and educational institutions, publishers, and the general public from the Smithsonian photographic archives. Subjects include photographs of the Smithsonian's scientific, technological, historical, and art collections. Some images date to photography's earliest days. A searchable database of images is available through the Internet. Information, order forms, and price lists may be obtained from the Office of Imaging, Printing, and Photographic Services, Smithsonian Institution, Washington, DC 20560. Phone, 202-357-1933. Internet, <http://www.si.edu/resource/>.

Publications Smithsonian Press/Smithsonian Productions and the Office of Public Affairs publish *Smithsonian Year*, the Institution's annual report. To purchase the report, call 202-357-2627. Press/Productions publishes a range of books and studies related to the sciences, technology, history, air and space, and the arts. A book catalog and a list of studies are available from Publications Sales, Smithsonian Books or Smithsonian Institution University Press, 1111 North Capitol Street, Washington, DC 20002. Phone, 202-287-3738. To purchase a Smithsonian Institution University Press volume, call 800-782-4612. To purchase a recording of the *Smithsonian Collection of Recordings*, contact Press/Productions. Phone, 800-863-9943.

An events highlight advertisement including opening exhibits is published in the *Washington Post* by the

Smithsonian Office of Public Affairs. The advertisement appears the next-to-last Friday of the month.

A free brochure providing a brief guide to the Smithsonian Institution is published in English and several foreign languages. For a copy, call Visitor Information, 202-357-2700, or pick up a copy at the information desks in the museums. A visitor's guide for individuals with disabilities is also available.

Smithsonian Institution Research Reports, containing news of current research projects in the arts, sciences, and history that are being conducted by Smithsonian staff, is produced by the Smithsonian Office of Public Affairs, Smithsonian Institution Building, MRC 033, 1000 Jefferson Drive SW., Washington, DC 20560. Phone, 202-357-2627.

To request a copy of *Smithsonian Runner*, a newsletter about Native American-related activities at the Smithsonian, contact the National Museum of the American Indian, Smithsonian Institution, Washington, DC 20560. Phone, 800-242-NMAI.

For the newsletter *Art to Zoo* for teachers of fourth through eighth graders, write to the Smithsonian Office of Education, Room 1163, MRC 402, Arts and Industries Building, Washington, DC 20560. Phone, 202-357-2425.

The Gallery Shops, National Gallery of Art (phone, 202-842-6466), makes available quality reproductions and publications about the Gallery's collections. The Information Office provides a monthly Calendar of Events and several brochures including *Brief Guide to the National Gallery of Art* and *An Invitation to the National Gallery of Art* (the latter in several foreign languages).

Radio and Telephone *Radio Smithsonian* produces award-winning radio series and specials about the arts, sciences, and human culture for national broadcast on public radio.

Dial-A-Museum, 202-357-2020 provides a taped message with daily announcements on new exhibits and special events.

Smithsonian Skywatchers Report, 202-357-2000 is a taped message with weekly announcements on stars, planets, and worldwide occurrences of short-lived natural phenomena.

For a *Spanish Listing of Smithsonian Events*, call 202-633-9126.

Concerts From the National Gallery is broadcast 4 weeks after the performance on Washington, DC, area radio station WGTS, 91.9 FM, Sundays at 7 p.m., November through July.

Speakers The Education Office, National Gallery of Art, Fourth Street and Constitution Avenue NW., Washington, DC 20565, provides gallery talks and lectures. Phone, 202-842-6246.

Special Functions Inquiries regarding the use of Kennedy Center facilities for special functions may be directed to the Office of Special Events, John F. Kennedy Center for the Performing Arts, Washington, DC 20566. Phone, 202-416-8000.

Theater Operations Inquiries regarding the use of the Kennedy Center's theaters may be addressed to the Booking Coordinator, John F. Kennedy Center for the Performing Arts, Washington, DC 20566. Phone, 202-416-8000.

Tours For information about museum and gallery tours, contact the Smithsonian Information Center, 1000 Jefferson Drive, SW., Washington, DC 20560. Phone, 202-357-2700. School groups are welcome.

Special behind-the-scenes tours are offered through the various memberships.

Visitor Information The Smithsonian Information Center, located in the original Smithsonian building, commonly known as "The Castle," provides general orientation, through films, computer interactive programs, and visitor information specialists, to help members and the public learn about the national collections, museum events, exhibitions, and special programs. Write to the Smithsonian Information Center, 1000 Jefferson Drive SW., Washington, DC 20560. Phone, 202-357-2700. TTY, 202-357-1729.

The Visitor Services Office of the National Gallery of Art provides

individual assistance to those with special needs, responds to written and telephone requests, supplies crowd control for ticketed exhibitions and programs, and provides information to those planning to visit the Washington, DC, area. For more information, write to the National Gallery of Art, Office of Visitor Services, Washington, DC 20565. Phone, 202-842-6680; or for the hearing impaired (TDD), 202-842-6176.

Volunteer Service Opportunities The Smithsonian Institution welcomes volunteers and offers a variety of interesting service opportunities. Individuals may serve as tour docents or information volunteers, or may participate in an independent program in which their educational and professional backgrounds are matched with curatorial or research requests from within the Smithsonian. For information, write to the Visitor Information and Associates' Reception Center, 1000 Jefferson Drive

SW., Washington, DC 20560. Phone, 202-357-2700. TTY, 202-357-1729.

Volunteers at the National Gallery of Art may select from providing such services as giving tours of the permanent Gallery collection for children and adults in English or foreign languages; serving as art information specialists at the art information desks throughout the West and East buildings; and assisting the library staff on assorted projects. For further details, write the Education Division, National Gallery of Art, Washington, DC 20565. Phone, 202-842-6246; or for the hearing impaired (TDD), 202-842-6176. For library volunteering inquiries, phone 202-842-6510.

For information about volunteer opportunities at the Kennedy Center, write to Friends of the Kennedy Center, Washington, DC 20566. Phone, 202-416-8000.

Members of the press may contact the Smithsonian Office of Public Affairs, MRC 033, 1000 Jefferson Drive SW., Washington, DC 20560. Phone, 202-357-2627. All other inquiries should be directed to the Smithsonian Information Center, 1000 Jefferson Drive SW., Washington, DC 20560. Phone, 202-357-2700. TDD, 202-357-1729. Internet, <http://www.si.edu/>.

STATE JUSTICE INSTITUTE

Suite 600, 1650 King Street, Alexandria, VA 22314
 Phone, 703-684-6100. Internet, <http://www.statejustice.org/>.

Board of Directors:

Chairman
 Vice Chairman
 Secretary
 Executive Committee Member
 Members

ROBERT A. MILLER
 JOSEPH F. BACA
 SANDRA A. O'CONNOR
 TERRENCE B. ADAMSON
 ROBERT N. BALDWIN, CARLOS R.
 GARZA, SOPHIA H. HALL, TOMMY
 JEWELL, ARTHUR MCGIVERIN, K
 EITH MCNAMARA, FLORENCE R.
 MURRAY

Officers:

Executive Director
 Deputy Director

DAVID I. TEVELIN
 RICHARD VAN DUIZEND

The State Justice Institute was established to award grants to improve judicial administration in the State courts of the United States.