

Public Programs Education Staff. Phone, 202-501-6729.

Tours Individuals or groups may request general or specialty tours behind the scenes at the National Archives building. Tours are given by reservation only, and individuals are requested to make reservations at least 3 weeks in advance. Tours are given at 10:15 a.m. or 1:15 p.m., Monday through Friday. Tours of the National Archives at College Park, MD, may also be arranged. Contact Visitor and Volunteer Services between 9 a.m. and 4 p.m., Monday through Friday. Phone, 202-501-5205.

Volunteer Service Opportunities A wide variety of opportunities is available

for volunteers. At the National Archives building and the National Archives at College Park, MD, volunteers conduct tours, provide information in the Exhibition Hall, work with staff archivists in processing historic documents, and serve as genealogical aides in the genealogical orientation room. For further information, call 202-501-5205. Similar opportunities exist in the Presidential libraries and at the regional records services facilities that house archival records. If outside the Washington, DC, area, contact the facility closest to you for further information on volunteer opportunities.

For further information, write or visit the National Archives and Records Administration, 700 Pennsylvania Avenue NW., Washington, DC 20408-0001. Phone, 202-501-5400. Internet, <http://www.nara.gov/>. E-mail, inquire@arch2.nara.gov.

NATIONAL CAPITAL PLANNING COMMISSION

Suite 301, 801 Pennsylvania Avenue NW., Washington, DC 20576

Phone, 202-482-7200. Internet, <http://www.ncpc.gov/>.

Chairman
Vice Chairman
Members

HARVEY B. GANTT
PATRICIA ELWOOD
ARRINGTON DIXON, ROBERT A.
GAINES, MARGARET G.
VANDERHYE

Ex Officio:

(Secretary of the Interior)
(Secretary of Defense)
(Administrator of General Services)
(Chairman, Senate Committee on
Governmental Affairs)
(Chairman, House Committee on
Government Reform and Oversight)
(Mayor of the District of Columbia)
(Chairman, Council of the District of
Columbia)

BRUCE BABBITT
WILLIAM S. COHEN
DAVID J. BARRAM
FRED THOMPSON

DAN BURTON

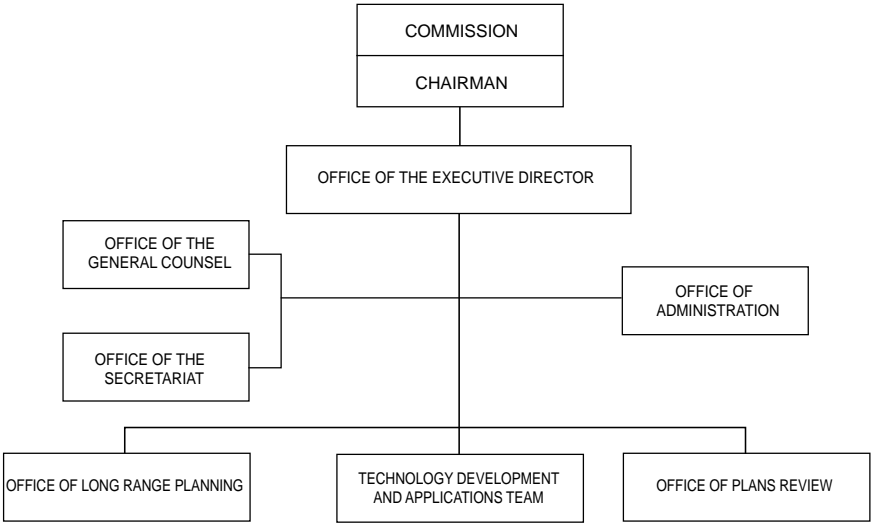
ANTHONY A. WILLIAMS
LINDA W. CROPP

Staff:

Executive Director
Assistant Executive Director (Programs)
Assistant Executive Director (Management)
Writer-Editor
Executive Officer
General Counsel
Secretariat

REGINALD W. GRIFFITH
DAVID A. NYSTROM
CONNIE M. HARSHAW
DENISE H. LIEBOWITZ
TERESA M. JACKSON
SANDRA H. SHAPIRO
RAE N. ALLEN

NATIONAL CAPITAL PLANNING COMMISSION



Director, Office of Long-Range Planning
 Director, Technology Development and
 Applications Team
 Director, Office of Plans Review

RONALD E. WILSON
 DERESENE WORSLEY

WILLIAM G. DOWD

[For the National Capital Planning Commission statement of organization, see the *Code of Federal Regulations*, Title 1, Part 456.2]

The National Capital Planning Commission is the central agency for conducting planning and development activities for Federal lands and facilities in the National Capital region. The region includes the District of Columbia and all land areas within the boundaries of Montgomery and Prince Georges Counties in Maryland and Fairfax, Loudoun, Prince William, and Arlington Counties in Virginia.

The National Capital Planning Commission was established as a park planning agency by act of June 6, 1924, as amended (40 U.S.C. 71 *et seq.*). Two years later its role was expanded to include comprehensive planning. In 1952, under the National Capital Planning Act, the Commission was designated the central planning agency for the Federal and District of Columbia governments.

In 1973, the National Capital Planning Act was amended by the District of Columbia Home Rule Act, which made the Mayor of the District of Columbia the chief planner for the District;

however, the Commission continues to serve as the central planning agency for the Federal Government in the National Capital region.

The Commission is composed of five appointed and seven *ex officio* members. Three citizen members, including the Chairman, are appointed by the President and two by the mayor of the District of Columbia. Presidential appointees include one resident each from Maryland and Virginia and one from anywhere in the United States; however, the two mayoral appointees must be District of Columbia residents.

For further information, contact the National Capital Planning Commission, Suite 301, 801 Pennsylvania Avenue NW., Washington, DC 20576. Phone, 202-482-7200. Fax, 202-482-7272. Internet, <http://www.ncpc.gov/>.

NATIONAL CREDIT UNION ADMINISTRATION

1775 Duke Street, Alexandria, VA 22314-3428
 Phone, 703-518-6300. Internet, <http://www.ncua.gov/>.

Chairman
 Members of the Board
 Executive Director
 Secretary to the Board
 Executive Assistant to the Chairman
 Executive Assistant to Board Member Dollar
 Executive Assistant to Board Member Wheat
 General Counsel
 Director, Office of Public and Congressional
 Affairs
 Director, Office of Examination and Insurance
 Inspector General

NORMAN E. D'AMOURS
 DENNIS DOLLAR, Y
 OLANDA TOWNSEND WHEAT
 CAROLYN D. JORDAN
 BECKY BAKER
 W. ROBERT HALL
 KIRK CUEVAS
 MARGARET BROADAWAY
 ROBERT M. FENNER
 ROBERT E. LOFTUS
 DAVID M. MARQUIS
 H. FRANK THOMAS