

FY 1994 PENNSYLVANIA COASTAL ZONE MANAGEMENT PROGRAM

SHADES BEACH PARK DEVELOPMENT PROJECT

PHASE I CONSTRUCTION

FINAL REPORT

SEPTEMBER 30, 1995

HARBORCREEK TOWNSHIP

ERIE COUNTY, PENNSYLVANIA

DEP GRANT/CONTRACT NO. - CZ1:94.01PE
GRANT TASK NO. - 94.03PE
ME NO. - 94465

A REPORT OF THE PENNSYLVANIA DEPARTMENT OF ENVIRONMENTAL
PROTECTION TO THE NATIONAL OCEANIC AND ATMOSPHERIC ADMINISTRATION
PURSUANT TO NOAA AWARD NO. - NA470Z0248

This project was financed in part through a federal Coastal Zone Management Grant from the Pennsylvania Department of Environmental Protection with funds provided by NOAA. The views expressed herein are those of the author(s) and do not necessarily reflect the views of NOAA or any of its subagencies.

SHADES BEACH PARK DEVELOPMENT PROJECT

PHASE I CONSTRUCTION

HARBORCREEK TOWNSHIP

ERIE COUNTY, PENNSYLVANIA

FINAL REPORT

SEPTEMBER 30, 1995

The preparation of this report was funded and coordinated through the Pennsylvania Department of Environmental Protection, Bureau of Land and Water Conservation, Division of Coastal Programs, the Erie County Department of Planning and Harborcreek Township.

6-B 454 .B3 N67 1995

TABLE OF CONTENTS

<u>SECTION</u>	<u>PAGE</u>
I. Project Location	1
II. Project Background	1
III. Project Description	2
IV. Preconstruction Photographs	3
V. Construction Photographs	7
VI. Final Project Photographs	15
VII. As-Built Drawings	20

EXHIBITS

1. Project Location Map

SHADES BEACH PARK DEVELOPMENT PROJECT

PHASE I CONSTRUCTION

FINAL REPORT

I. Project Location

The site is the Shades Beach Park which is located in the north central portion of Harborcreek Township, Erie County, Pennsylvania, adjacent to Lake Erie. Access to the park is from the south from State Route 5 (East Lake Road) along the Shades Beach Road. It should be noted that the project site has been identified to be within a Geographic Area of Particular Concern (GAPC) within the Lake Erie Coastal Zone as included in the Commonwealth's adopted Coastal Zone Management (CZM) Plan.

II. Project Background

In November of 1983, the Township of Harborcreek commissioned the United States Army Corps of Engineers to study the feasibility of constructing improvements at Shades Beach which would result in both the protection and restoration of usable beach as well as the construction of a "safe harbor" for navigational purposes. This study, called an Initial Appraisal Study (IAS), was concluded in August of 1985. The IAS looked at several schemes for achieving the aforementioned goals and objectives. The costs for the various schemes were weighed against the benefits to be derived by each. Additionally, a preliminary environmental assessment was performed along with initial contacts and discussions with 12 of the state, federal and local agencies which either have or will have an interest in the project to be undertaken.

Based on the completed IAS, the Army Corps of Engineers concluded that an improvement project at the Shades Beach Park would be feasible and justified. The projected benefits which would be realized were found to outweigh their associated costs. Thus, both the navigational and beach restoration improvements were determined to be warranted.

A report entitled "Beach Restoration and Navigational Improvements Design Study" dated June, 1989 was completed under the fiscal year 1987 CZM Program funding cycle by Harborcreek Township. This report includes a detailed design, including plans and specifications, for the restoration of a beach area and construction of a breakwater to develop a safe harbor and boat launching facility.

These previous studies concluded that the development of the improved beach area, safe harbor and boat launching facilities was warranted. However, these conclusions were based on the projected benefits being greater than the costs of the development. The total benefits which would be realized at the park are based upon the estimated usage of the improved facilities (i.e. number of boat launches, number of beach users, etc.). In order to accommodate the increased demand on the park facilities as a result of the anticipated development, improved parking and access facilities are necessary.

Therefore, Harborcreek Township recently completed the "Shades Beach Overall Development and On-Shore Improvements Final Design and Engineering Study" under the fiscal year 1992 CZM Program. The design of the access road, parking lot(s), bathhouse and sanitary facilities was completed as well as an overall park development plan.

Harborcreek Township also completed a Phase I archaeological study for the Shades Beach Park On-Shore Development Project. The Pennsylvania Historical and Museum Commission determined that the proposed improvements could be completed without adversely impacting any historical or archaeological resources.

III. Project Description

This project consisted of the construction of Phase I of the Shades Beach Park Development Project. The actual work effort involved the construction and paving of approximately 1,200 feet of two lane roadway from State Route 5 into the park, including excavation, subbase, asphalt, drainage, guide rail, utility installation and relocation and miscellaneous restoration activities. Harborcreek Township municipal forces performed all construction activities associated with the project.

Prior to construction, Harborcreek Township received the necessary approvals from various agencies to proceed with the project activities. Additionally, the Township prepared the bid documents and specifications for the acquisition of the materials needed to complete the project.

Material bids were opened by the Harborcreek Township Board of Supervisors on April 5, 1995. Contracts for the purchase of the various materials were then awarded by the Board of Supervisors on April 12, 1995.

Harborcreek Township municipal employees completed all work efforts associated with this project on schedule in advance of the September 30, 1995 deadline. The entire project was completed at a cost of \$210,034.46 with \$50,000.00 in CZM grant funds being utilized. A final project sign has been erected in accordance with the contract requirements.

IV. Preconstruction Photographs

Preconstruction photographs of the Shades Beach Park Development Project, Phase I Construction are included herein.

SHADES BEACH PARK DEVELOPMENT PROJECT - PHASE I
PRECONSTRUCTION PHOTOGRAPHS



NORTH END OF PROJECT AREA LOOKING SOUTH



MIDDLE OF PROJECT AREA LOOKING NORTH

SHADES BEACH PARK DEVELOPMENT PROJECT - PHASE I
PRECONSTRUCTION PHOTOGRAPHS



MIDDLE OF PROJECT AREA LOOKING SOUTH



SOUTH END OF PROJECT AREA LOOKING NORTH

SHADES BEACH PARK DEVELOPMENT PROJECT - PHASE I
PRECONSTRUCTION PHOTOGRAPHS



NORTH OF BOULEVARD LOOKING SOUTH



MIDDLE OF BOULEVARD LOOKING NORTH

V. Construction Photographs

Construction photographs of the Shades Beach Park Development Project, Phase I Construction are included herein.

SHADES BEACH PARK DEVELOPMENT PROJECT - PHASE I
CONSTRUCTION PHOTOGRAPHS



AERIAL VIEW OF NORTHERN PROJECT AREA



AERIAL VIEW OF SOUTHERN PROJECT AREA

SHADES BEACH PARK DEVELOPMENT PROJECT - PHASE I CONSTRUCTION PHOTOGRAPHS



CONSTRUCTION SIGN



UTILITY RELOCATION WORK

SHADES BEACH PARK DEVELOPMENT PROJECT - PHASE I
CONSTRUCTION PHOTOGRAPHS



CLEARING AND GRUBBING

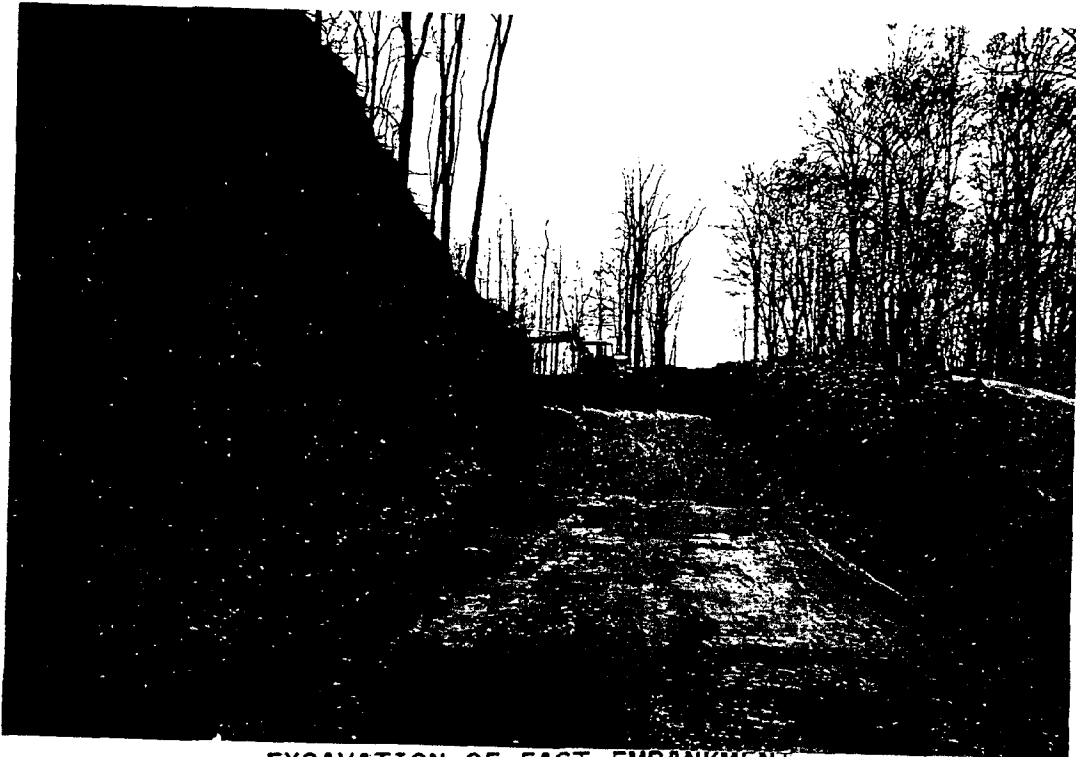


CLEARING AND GRUBBING

SHADES BEACH PARK DEVELOPMENT PROJECT - PHASE I
CONSTRUCTION PHOTOGRAPHS



EXCAVATION OF EAST EMBANKMENT

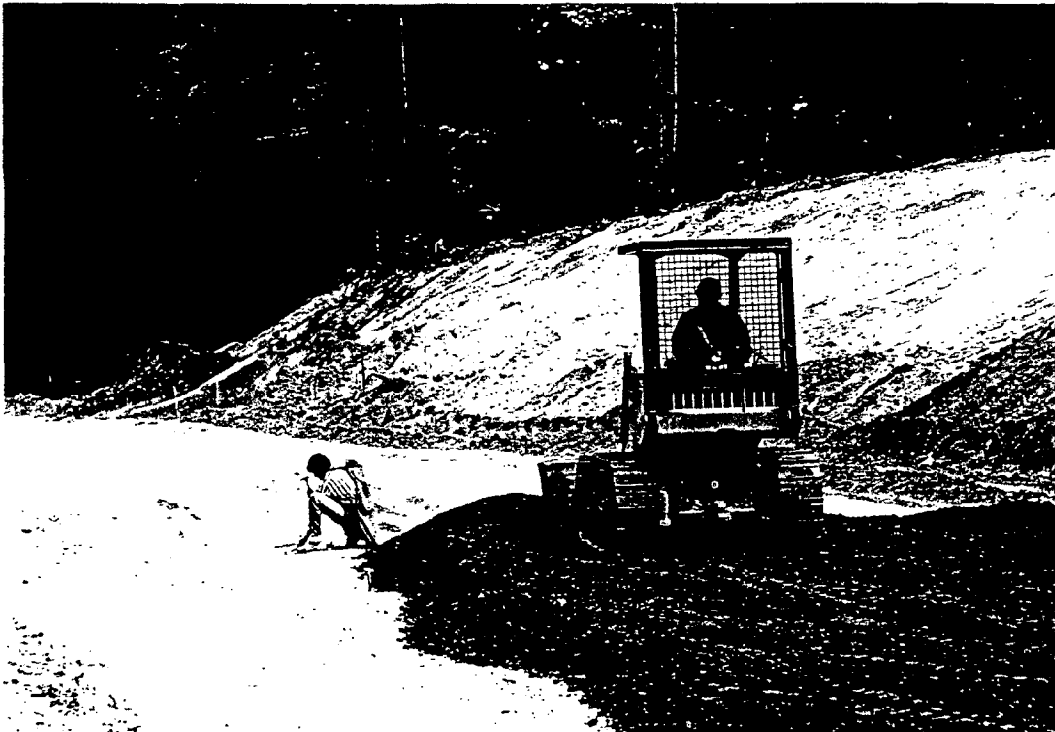


EXCAVATION OF EAST EMBANKMENT

SHADES BEACH PARK DEVELOPMENT PROJECT - PHASE I
CONSTRUCTION PHOTOGRAPHS

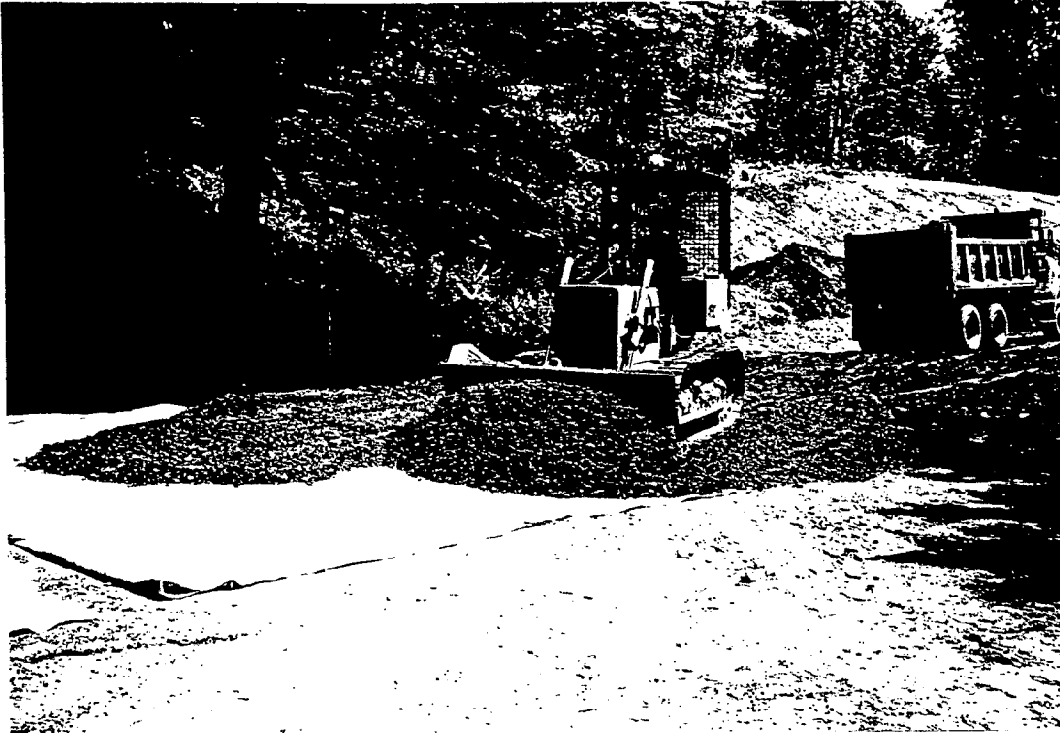


EXCAVATION AND GRADING OF ROADWAY

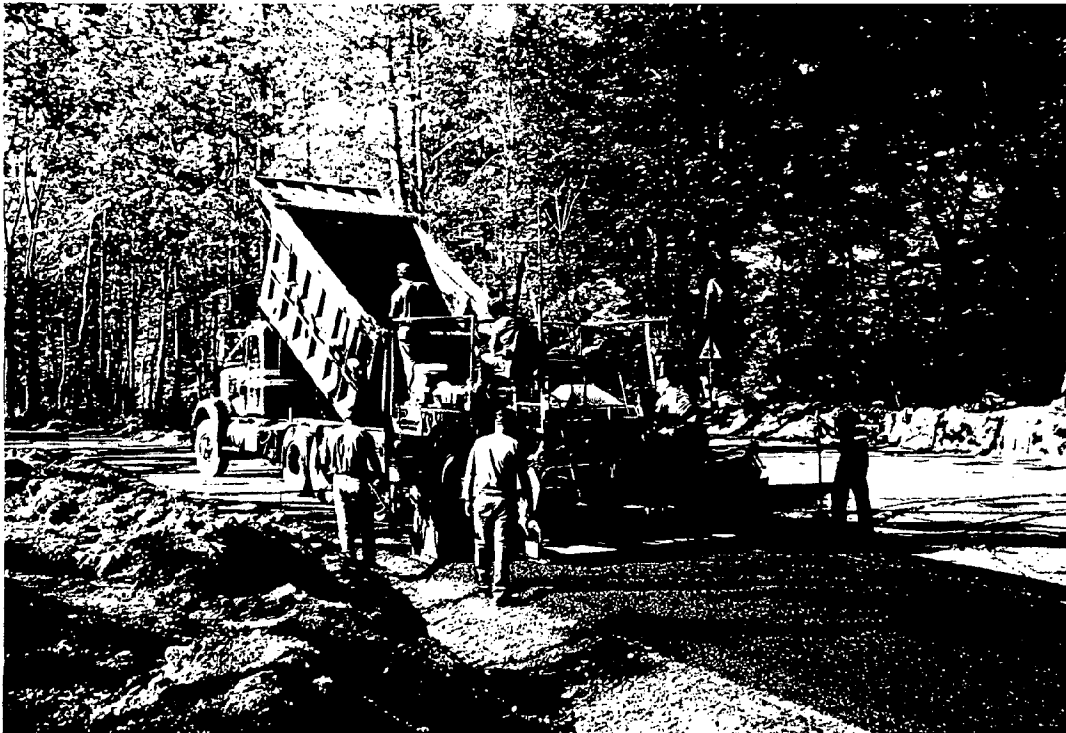


SUBBASE CONSTRUCTION

SHADES BEACH PARK DEVELOPMENT PROJECT - PHASE I
CONSTRUCTION PHOTOGRAPHS



SUBBASE CONSTRUCTION



ASPHALT PAVING

SHADES BEACH PARK DEVELOPMENT PROJECT - PHASE I
CONSTRUCTION PHOTOGRAPHS

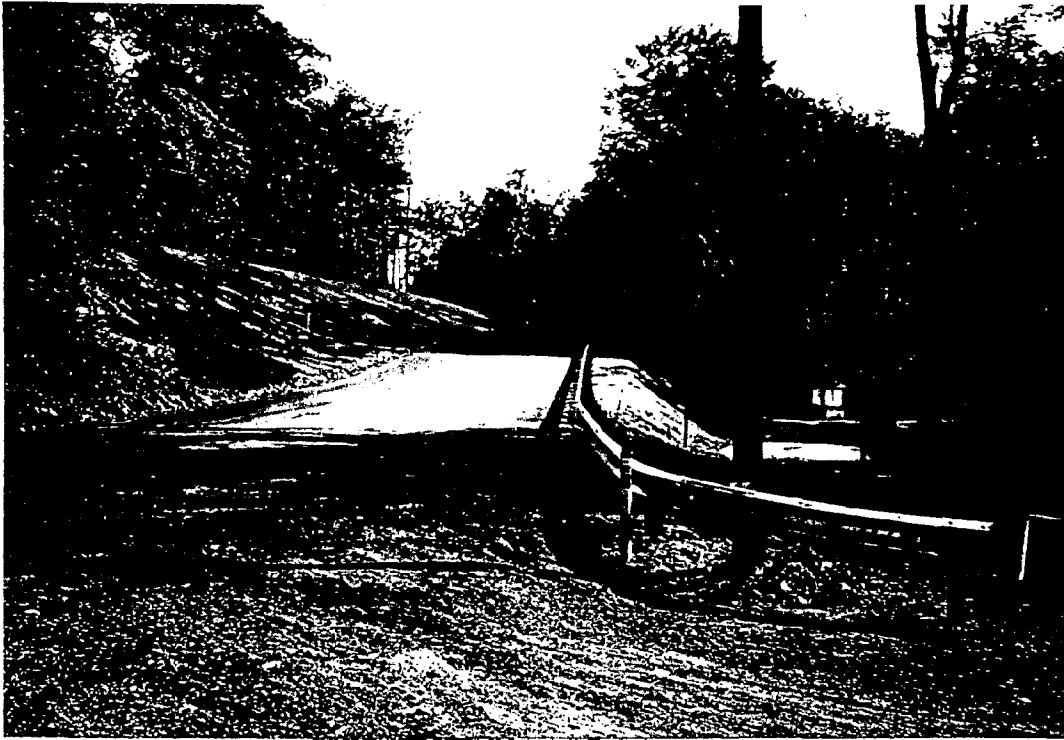


ASPHALT PAVING

VI. Post-Construction Photographs

Post-construction photographs of the Shades Beach Park Development Project, Phase I Construction are included herein.

SHADES BEACH PARK DEVELOPMENT PROJECT - PHASE I
FINAL PROJECT PHOTOGRAPHS



NORTH END OF PROJECT AREA LOOKING SOUTH



MIDDLE OF PROJECT AREA LOOKING NORTH

SHADES BEACH PARK DEVELOPMENT PROJECT - PHASE I
FINAL PROJECT PHOTOGRAPHS

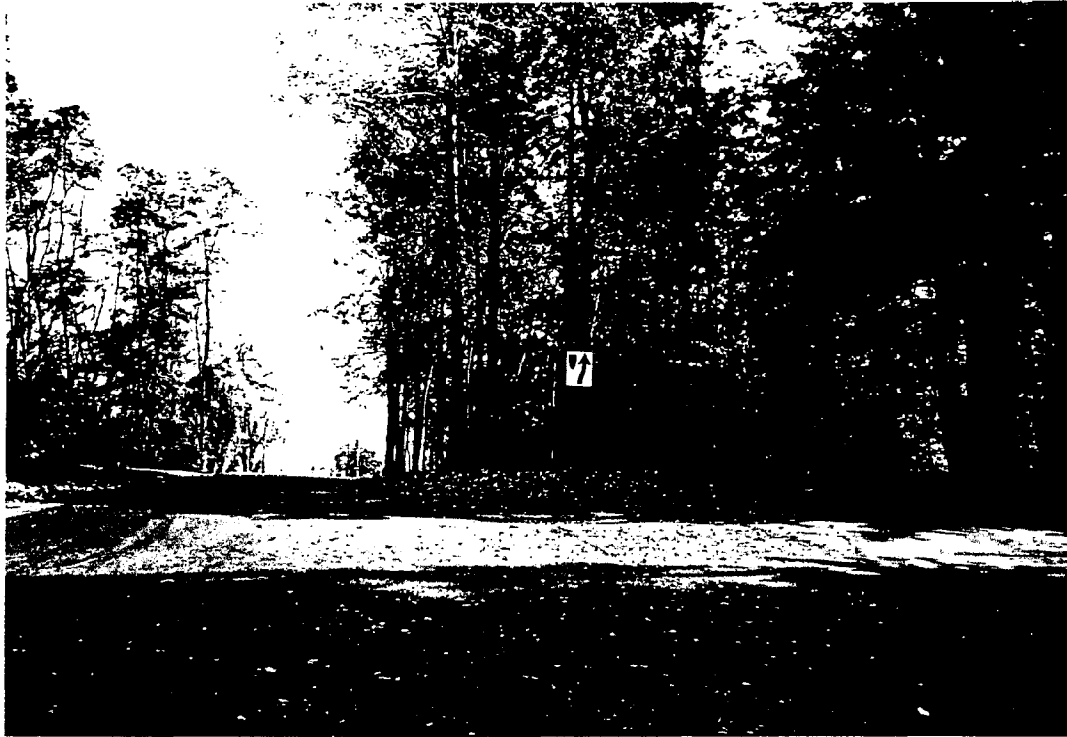


MIDDLE OF PROJECT AREA LOOKING SOUTH



SOUTH END OF PROJECT AREA LOOKING NORTH

SHADES BEACH PARK DEVELOPMENT PROJECT - PHASE I
FINAL PROJECT PHOTOGRAPHS



NORTH OF BOULEVARD LOOKING SOUTH



MIDDLE OF BOULEVARD LOOKING NORTH

SHADES BEACH PARK DEVELOPMENT PROJECT - PHASE I
FINAL PROJECT PHOTOGRAPHS



ROADWAY EMBANKMENT - EAST SIDE



ROADWAY EMBANKMENT - WEST SIDE

VII. As-Built Drawings

As-built drawings of the Shades Beach Park Development Project, Phase I Construction have been prepared and are available for review at the Harborcreek Township Municipal Building and at the Erie County Department of Planning.

EXHIBIT 1.
PROJECT LOCATION MAP

12'30"

4673

4672

4968 II NE
(ERIE NORTH)

4670

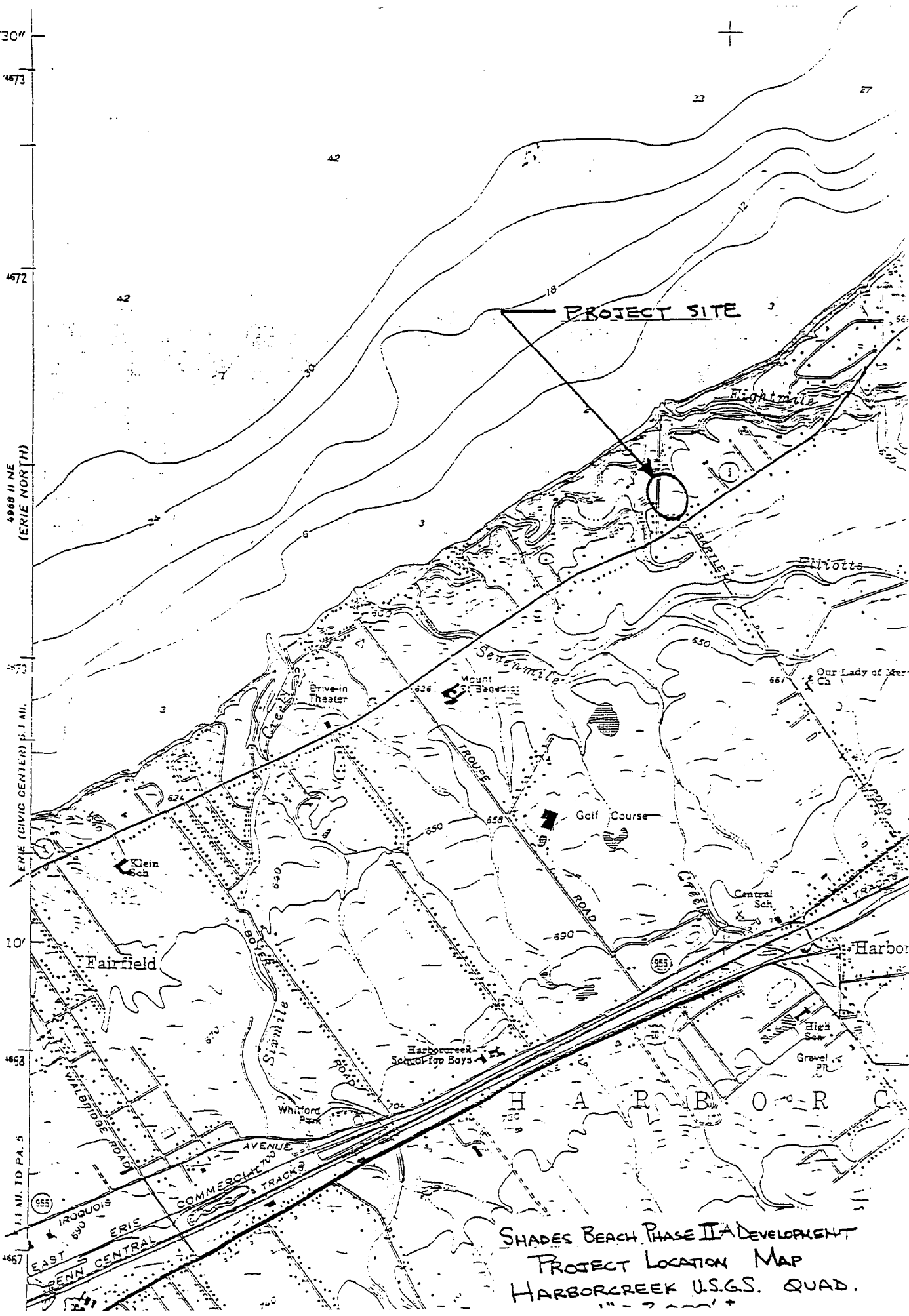
ERIE (CIVIC CENTER) P. 1 MI.

10'

4668

1.1 MI. TO PA. 5

4667



SHADES BEACH PHASE II A DEVELOPMENT
PROJECT LOCATION MAP
HARBOR CREEK U.S.G.S. QUAD.
1" = 2 MI.

NOAA COASTAL SERVICES CTR LIBRARY



3 6668 14111477 9